

# Weld County, Colorado

## Section 06-T07N-R64W

### Almont 5-05-01L

#### plan1

#### Section Details

Sec	MD	Inc	Azi	TVD	+N/-S	+E/-W	Dleg	Vsect	Annotation
1	0.00	0.00	0.00	0.00	0.00	0.00	0.00	0.00	
2	3000.00	0.00	0.00	3000.00	0.00	0.00	0.00	0.00	KOP Begin 1°/100' build
3	4003.58	10.04	154.69	3998.46	-79.26	37.48	1.00	41.07	Begin 10.04° tangent
4	6551.81	10.04	154.69	6507.69	-480.70	227.30	0.00	249.13	Begin 10°/100' build/turn
5	7409.84	90.00	89.53	7032.00	-560.18	799.39	10.00	824.27	Begin 90.00° lateral
6	17060.89	90.00	89.53	7032.00	-480.39	10450.12	0.00	10461.15	PBHL/TD 17060.89 MD/7032.00 TVD

#### DESIGN TARGET DETAILS

Name	TVD	+N/-S	+E/-W	Northing	Easting	Latitude	Longitude
Almont 5-05-01L LP 1844 FNL 470 FWL	7032.00	-560.18	799.39	14746994.33	1756657.41	40.60408802	-104.58121694
Almont 5-05-01L PBHL 1844 FNL 470 FEL	7032.00	-480.39	10450.12	14747119.72	1766307.63	40.60430104	-104.54644855

Almont 5-05-01L			
Surf loc: 1272 FNL 325 FEL Section 06-T08N-R64W			
NAD83 Colorado - HARN			
Universal Transverse Mercator (US Survey Feet)			
Zone 13N (108 W to 102 W)			
RKB=5001+24 @ 5025.00ft			
Northing	Easting	Latitude	Longitude
14747550.73	1755855.38	40.60562625	-104.58409689

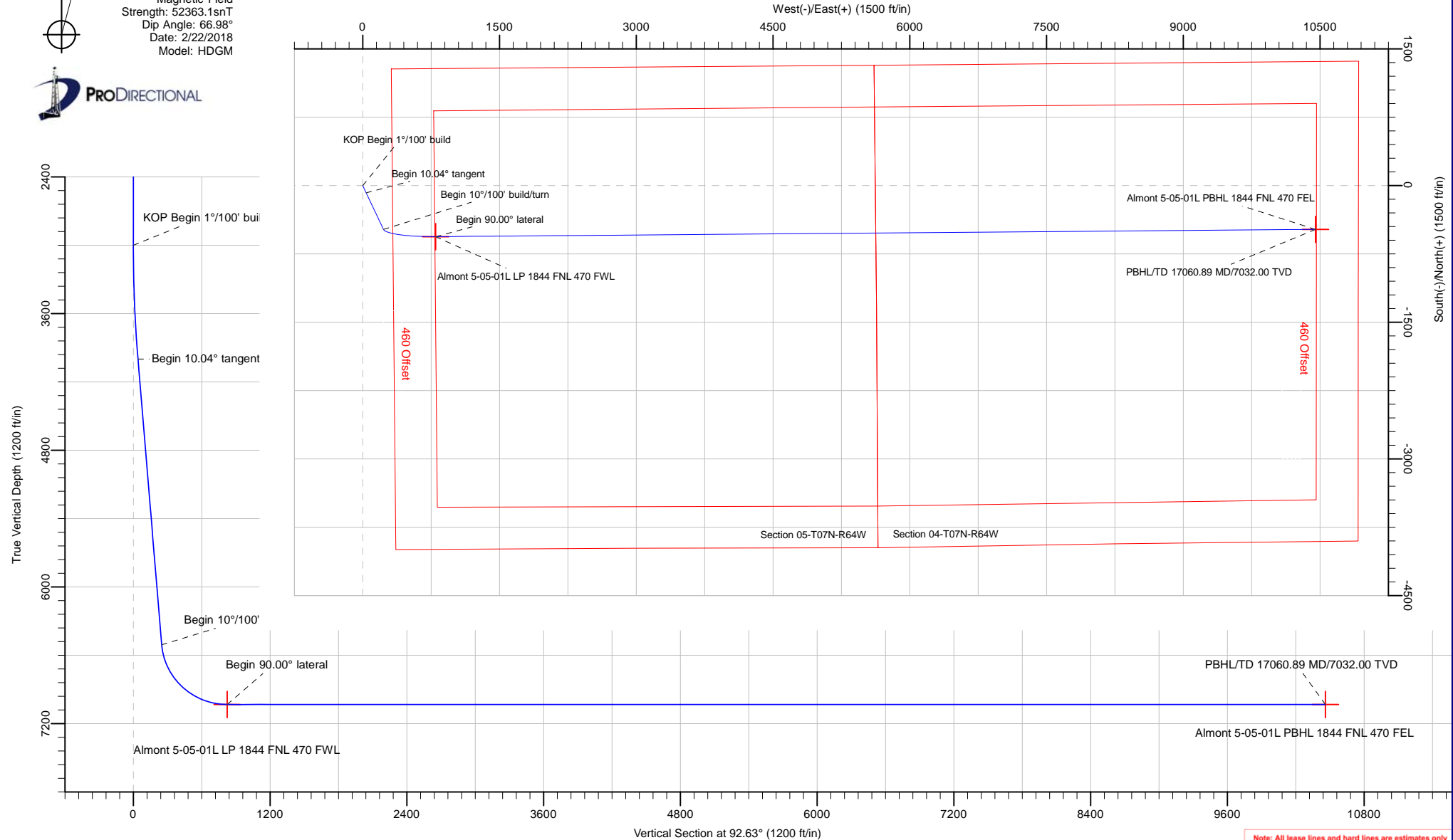


Azimuths to True North  
Magnetic North: 8.00°

Magnetic Field  
Strength: 52363.1snT  
Dip Angle: 66.98°  
Date: 2/22/2018  
Model: HDGM

#### Azimuth Corrections:

To convert a Magnetic Direction to a True Direction, Add 8.00° East



Note: All lease lines and hard lines are estimates only and are subject to customers approval.

<b>Database:</b>	DB_Jul2216dt_v14	<b>Local Co-ordinate Reference:</b>	Well Almont 5-05-01L
<b>Company:</b>	Confluence Resources	<b>TVD Reference:</b>	RKB=5001+24 @ 5025.00ft
<b>Project:</b>	Weld County, Colorado	<b>MD Reference:</b>	RKB=5001+24 @ 5025.00ft
<b>Site:</b>	Section 06-T07N-R64W	<b>North Reference:</b>	True
<b>Well:</b>	Almont 5-05-01L	<b>Survey Calculation Method:</b>	Minimum Curvature
<b>Wellbore:</b>	Original Hole		
<b>Design:</b>	plan1		

<b>Project</b>	Weld County, Colorado		
<b>Map System:</b>	Universal Transverse Mercator (US Survey Feet)	<b>System Datum:</b>	Mean Sea Level
<b>Geo Datum:</b>	NAD83 Colorado - HARN		
<b>Map Zone:</b>	Zone 13N (108 W to 102 W)		

Site		Section 06-T07N-R64W			
Site Position:		Northing:	14,746,184.54 usft	Latitude:	40.60187654
From:	Map	Easting:	1,755,730.03 usft	Longitude:	-104.58457171
Position Uncertainty:	0.00 ft	Slot Radius:	13-3/16 "	Grid Convergence:	0.27 °

Well	Almont 5-05-01L, Surf loc: 1272 FNL 325 FEL Section 06-T08N-R64W					
Well Position	+N/-S	1,365.59 ft	Northing:	14,747,550.73 usft	Latitude:	40.60562624
	+E/-W	131.80 ft	Easting:	1,755,855.38 usft	Longitude:	-104.58409688
Position Uncertainty		0.00 ft	Wellhead Elevation:		Ground Level:	5,001.00 ft

<b>Wellbore</b>	Original Hole				
<b>Magnetics</b>	<b>Model Name</b>	<b>Sample Date</b>	<b>Declination (°)</b>	<b>Dip Angle (°)</b>	<b>Field Strength (nT)</b>
	HDGM	2/22/2018	8.00	66.98	52,363.10000000

<b>Design</b>	plan1			
<b>Audit Notes:</b>				
<b>Version:</b>	<b>Phase:</b>	PLAN	<b>Tie On Depth:</b>	0.00
<b>Vertical Section:</b>	<b>Depth From (TVD) (ft)</b>	<b>+N/-S (ft)</b>	<b>+E/-W (ft)</b>	<b>Direction (°)</b>
	0.00	0.00	0.00	92.63

<b>Plan Survey Tool Program</b>	<b>Date</b>	2/22/2018		
<b>Depth From (ft)</b>	<b>Depth To (ft)</b>	<b>Survey (Wellbore)</b>	<b>Tool Name</b>	<b>Remarks</b>
1	0.00	17,060.89	plan1 (Original Hole)	

<b>Plan Sections</b>										
<b>Measured Depth (ft)</b>	<b>Inclination (°)</b>	<b>Azimuth (°)</b>	<b>Vertical Depth (ft)</b>	<b>+N/-S (ft)</b>	<b>+E/-W (ft)</b>	<b>Dogleg Rate (°/100ft)</b>	<b>Build Rate (°/100ft)</b>	<b>Turn Rate (°/100ft)</b>	<b>TFO (°)</b>	<b>Target</b>
0.00	0.00	0.00	0.00	0.00	0.00	0.00	0.00	0.00	0.00	
3,000.00	0.00	0.00	3,000.00	0.00	0.00	0.00	0.00	0.00	0.00	
4,003.58	10.04	154.69	3,998.46	-79.26	37.48	1.00	1.00	0.00	154.69	
6,551.81	10.04	154.69	6,507.69	-480.70	227.30	0.00	0.00	0.00	0.00	
7,409.84	90.00	89.53	7,032.00	-560.18	799.39	10.00	9.32	-7.59	-65.50	Almont 5-05-01L LP 1
17,060.89	90.00	89.53	7,032.00	-480.39	10,450.12	0.00	0.00	0.00	0.00	Almont 5-05-01L PBH

<b>Database:</b>	DB_Jul2216dt_v14	<b>Local Co-ordinate Reference:</b>	Well Almont 5-05-01L
<b>Company:</b>	Confluence Resources	<b>TVD Reference:</b>	RKB=5001+24 @ 5025.00ft
<b>Project:</b>	Weld County, Colorado	<b>MD Reference:</b>	RKB=5001+24 @ 5025.00ft
<b>Site:</b>	Section 06-T07N-R64W	<b>North Reference:</b>	True
<b>Well:</b>	Almont 5-05-01L	<b>Survey Calculation Method:</b>	Minimum Curvature
<b>Wellbore:</b>	Original Hole		
<b>Design:</b>	plan1		

Planned Survey									
Measured Depth (ft)	Inclination (°)	Azimuth (°)	Vertical Depth (ft)	+N/-S (ft)	+E/-W (ft)	Vertical Section (ft)	Dogleg Rate (°/100ft)	Build Rate (°/100ft)	Turn Rate (°/100ft)
0.00	0.00	0.00	0.00	0.00	0.00	0.00	0.00	0.00	0.00
100.00	0.00	0.00	100.00	0.00	0.00	0.00	0.00	0.00	0.00
200.00	0.00	0.00	200.00	0.00	0.00	0.00	0.00	0.00	0.00
300.00	0.00	0.00	300.00	0.00	0.00	0.00	0.00	0.00	0.00
400.00	0.00	0.00	400.00	0.00	0.00	0.00	0.00	0.00	0.00
500.00	0.00	0.00	500.00	0.00	0.00	0.00	0.00	0.00	0.00
600.00	0.00	0.00	600.00	0.00	0.00	0.00	0.00	0.00	0.00
700.00	0.00	0.00	700.00	0.00	0.00	0.00	0.00	0.00	0.00
800.00	0.00	0.00	800.00	0.00	0.00	0.00	0.00	0.00	0.00
900.00	0.00	0.00	900.00	0.00	0.00	0.00	0.00	0.00	0.00
1,000.00	0.00	0.00	1,000.00	0.00	0.00	0.00	0.00	0.00	0.00
1,100.00	0.00	0.00	1,100.00	0.00	0.00	0.00	0.00	0.00	0.00
1,200.00	0.00	0.00	1,200.00	0.00	0.00	0.00	0.00	0.00	0.00
1,300.00	0.00	0.00	1,300.00	0.00	0.00	0.00	0.00	0.00	0.00
1,400.00	0.00	0.00	1,400.00	0.00	0.00	0.00	0.00	0.00	0.00
1,500.00	0.00	0.00	1,500.00	0.00	0.00	0.00	0.00	0.00	0.00
1,600.00	0.00	0.00	1,600.00	0.00	0.00	0.00	0.00	0.00	0.00
1,700.00	0.00	0.00	1,700.00	0.00	0.00	0.00	0.00	0.00	0.00
1,800.00	0.00	0.00	1,800.00	0.00	0.00	0.00	0.00	0.00	0.00
1,900.00	0.00	0.00	1,900.00	0.00	0.00	0.00	0.00	0.00	0.00
2,000.00	0.00	0.00	2,000.00	0.00	0.00	0.00	0.00	0.00	0.00
2,100.00	0.00	0.00	2,100.00	0.00	0.00	0.00	0.00	0.00	0.00
2,200.00	0.00	0.00	2,200.00	0.00	0.00	0.00	0.00	0.00	0.00
2,300.00	0.00	0.00	2,300.00	0.00	0.00	0.00	0.00	0.00	0.00
2,400.00	0.00	0.00	2,400.00	0.00	0.00	0.00	0.00	0.00	0.00
2,500.00	0.00	0.00	2,500.00	0.00	0.00	0.00	0.00	0.00	0.00
2,600.00	0.00	0.00	2,600.00	0.00	0.00	0.00	0.00	0.00	0.00
2,700.00	0.00	0.00	2,700.00	0.00	0.00	0.00	0.00	0.00	0.00
2,800.00	0.00	0.00	2,800.00	0.00	0.00	0.00	0.00	0.00	0.00
2,900.00	0.00	0.00	2,900.00	0.00	0.00	0.00	0.00	0.00	0.00
3,000.00	0.00	0.00	3,000.00	0.00	0.00	0.00	0.00	0.00	0.00
KOP Begin 1°/100' build									
3,100.00	1.00	154.69	3,099.99	-0.79	0.37	0.41	1.00	1.00	0.00
3,200.00	2.00	154.69	3,199.96	-3.16	1.49	1.64	1.00	1.00	0.00
3,300.00	3.00	154.69	3,299.86	-7.10	3.36	3.68	1.00	1.00	0.00
3,400.00	4.00	154.69	3,399.68	-12.62	5.97	6.54	1.00	1.00	0.00
3,500.00	5.00	154.69	3,499.37	-19.71	9.32	10.22	1.00	1.00	0.00
3,600.00	6.00	154.69	3,598.90	-28.38	13.42	14.71	1.00	1.00	0.00
3,700.00	7.00	154.69	3,698.26	-38.61	18.26	20.01	1.00	1.00	0.00
3,800.00	8.00	154.69	3,797.40	-50.41	23.84	26.12	1.00	1.00	0.00
3,900.00	9.00	154.69	3,896.30	-63.77	30.15	33.05	1.00	1.00	0.00
4,000.00	10.00	154.69	3,994.93	-78.69	37.21	40.78	1.00	1.00	0.00
4,003.58	10.04	154.69	3,998.46	-79.26	37.48	41.07	1.00	1.00	0.00
Begin 10.04° tangent									
4,100.00	10.04	154.69	4,093.40	-94.44	44.66	48.95	0.00	0.00	0.00
4,200.00	10.04	154.69	4,191.87	-110.20	52.11	57.11	0.00	0.00	0.00
4,300.00	10.04	154.69	4,290.34	-125.95	59.56	65.28	0.00	0.00	0.00
4,400.00	10.04	154.69	4,388.81	-141.71	67.00	73.44	0.00	0.00	0.00
4,500.00	10.04	154.69	4,487.28	-157.46	74.45	81.61	0.00	0.00	0.00
4,600.00	10.04	154.69	4,585.75	-173.21	81.90	89.77	0.00	0.00	0.00
4,700.00	10.04	154.69	4,684.22	-188.97	89.35	97.94	0.00	0.00	0.00
4,800.00	10.04	154.69	4,782.69	-204.72	96.80	106.10	0.00	0.00	0.00
4,900.00	10.04	154.69	4,881.16	-220.48	104.25	114.26	0.00	0.00	0.00

<b>Database:</b>	DB_Jul2216dt_v14	<b>Local Co-ordinate Reference:</b>	Well Almont 5-05-01L
<b>Company:</b>	Confluence Resources	<b>TVD Reference:</b>	RKB=5001+24 @ 5025.00ft
<b>Project:</b>	Weld County, Colorado	<b>MD Reference:</b>	RKB=5001+24 @ 5025.00ft
<b>Site:</b>	Section 06-T07N-R64W	<b>North Reference:</b>	True
<b>Well:</b>	Almont 5-05-01L	<b>Survey Calculation Method:</b>	Minimum Curvature
<b>Wellbore:</b>	Original Hole		
<b>Design:</b>	plan1		

Planned Survey									
Measured Depth (ft)	Inclination (°)	Azimuth (°)	Vertical Depth (ft)	+N/-S (ft)	+E/-W (ft)	Vertical Section (ft)	Dogleg Rate (°/100ft)	Build Rate (°/100ft)	Turn Rate (°/100ft)
5,000.00	10.04	154.69	4,979.63	-236.23	111.70	122.43	0.00	0.00	0.00
5,100.00	10.04	154.69	5,078.10	-251.99	119.15	130.59	0.00	0.00	0.00
5,200.00	10.04	154.69	5,176.57	-267.74	126.60	138.76	0.00	0.00	0.00
5,300.00	10.04	154.69	5,275.04	-283.49	134.05	146.92	0.00	0.00	0.00
5,400.00	10.04	154.69	5,373.51	-299.25	141.50	155.09	0.00	0.00	0.00
5,500.00	10.04	154.69	5,471.98	-315.00	148.95	163.25	0.00	0.00	0.00
5,600.00	10.04	154.69	5,570.45	-330.76	156.39	171.42	0.00	0.00	0.00
5,700.00	10.04	154.69	5,668.92	-346.51	163.84	179.58	0.00	0.00	0.00
5,800.00	10.04	154.69	5,767.39	-362.26	171.29	187.75	0.00	0.00	0.00
5,900.00	10.04	154.69	5,865.86	-378.02	178.74	195.91	0.00	0.00	0.00
6,000.00	10.04	154.69	5,964.33	-393.77	186.19	204.08	0.00	0.00	0.00
6,100.00	10.04	154.69	6,062.80	-409.53	193.64	212.24	0.00	0.00	0.00
6,200.00	10.04	154.69	6,161.27	-425.28	201.09	220.41	0.00	0.00	0.00
6,300.00	10.04	154.69	6,259.74	-441.03	208.54	228.57	0.00	0.00	0.00
6,400.00	10.04	154.69	6,358.21	-456.79	215.99	236.74	0.00	0.00	0.00
6,500.00	10.04	154.69	6,456.68	-472.54	223.44	244.90	0.00	0.00	0.00
6,551.81	10.04	154.69	6,507.69	-480.70	227.30	249.13	0.00	0.00	0.00
Begin 10°/100' build/turn									
6,600.00	12.80	134.51	6,554.95	-488.25	232.90	255.08	10.00	5.74	-41.88
6,700.00	21.02	114.23	6,650.62	-503.41	257.22	280.06	10.00	8.22	-20.27
6,800.00	30.30	105.48	6,740.69	-517.54	297.98	321.43	10.00	9.28	-8.75
6,900.00	39.90	100.60	6,822.43	-530.21	353.96	377.94	10.00	9.61	-4.88
7,000.00	49.64	97.37	6,893.34	-541.02	423.45	447.85	10.00	9.74	-3.23
7,100.00	59.45	94.97	6,951.28	-549.66	504.34	529.05	10.00	9.81	-2.40
7,200.00	69.29	93.01	6,994.48	-555.86	594.17	619.07	10.00	9.84	-1.96
7,300.00	79.16	91.29	7,021.64	-559.42	690.22	715.18	10.00	9.86	-1.72
7,400.00	89.03	89.68	7,031.92	-560.25	789.56	814.45	10.00	9.87	-1.61
7,409.84	90.00	89.53	7,032.00	-560.18	799.39	824.27	10.00	9.87	-1.59
Begin 90.00° lateral									
7,500.00	90.00	89.53	7,032.00	-559.44	889.55	914.30	0.00	0.00	0.00
7,600.00	90.00	89.53	7,032.00	-558.61	989.55	1,014.16	0.00	0.00	0.00
7,700.00	90.00	89.53	7,032.00	-557.79	1,089.55	1,114.01	0.00	0.00	0.00
7,800.00	90.00	89.53	7,032.00	-556.96	1,189.54	1,213.86	0.00	0.00	0.00
7,900.00	90.00	89.53	7,032.00	-556.13	1,289.54	1,313.72	0.00	0.00	0.00
8,000.00	90.00	89.53	7,032.00	-555.30	1,389.54	1,413.57	0.00	0.00	0.00
8,100.00	90.00	89.53	7,032.00	-554.48	1,489.53	1,513.42	0.00	0.00	0.00
8,200.00	90.00	89.53	7,032.00	-553.65	1,589.53	1,613.28	0.00	0.00	0.00
8,300.00	90.00	89.53	7,032.00	-552.82	1,689.53	1,713.13	0.00	0.00	0.00
8,400.00	90.00	89.53	7,032.00	-552.00	1,789.52	1,812.98	0.00	0.00	0.00
8,500.00	90.00	89.53	7,032.00	-551.17	1,889.52	1,912.84	0.00	0.00	0.00
8,600.00	90.00	89.53	7,032.00	-550.34	1,989.51	2,012.69	0.00	0.00	0.00
8,700.00	90.00	89.53	7,032.00	-549.52	2,089.51	2,112.54	0.00	0.00	0.00
8,800.00	90.00	89.53	7,032.00	-548.69	2,189.51	2,212.39	0.00	0.00	0.00
8,900.00	90.00	89.53	7,032.00	-547.86	2,289.50	2,312.25	0.00	0.00	0.00
9,000.00	90.00	89.53	7,032.00	-547.04	2,389.50	2,412.10	0.00	0.00	0.00
9,100.00	90.00	89.53	7,032.00	-546.21	2,489.50	2,511.95	0.00	0.00	0.00
9,200.00	90.00	89.53	7,032.00	-545.38	2,589.49	2,611.81	0.00	0.00	0.00
9,300.00	90.00	89.53	7,032.00	-544.56	2,689.49	2,711.66	0.00	0.00	0.00
9,400.00	90.00	89.53	7,032.00	-543.73	2,789.49	2,811.51	0.00	0.00	0.00
9,500.00	90.00	89.53	7,032.00	-542.90	2,889.48	2,911.37	0.00	0.00	0.00
9,600.00	90.00	89.53	7,032.00	-542.08	2,989.48	3,011.22	0.00	0.00	0.00
9,700.00	90.00	89.53	7,032.00	-541.25	3,089.48	3,111.07	0.00	0.00	0.00
9,800.00	90.00	89.53	7,032.00	-540.42	3,189.47	3,210.93	0.00	0.00	0.00
9,900.00	90.00	89.53	7,032.00	-539.60	3,289.47	3,310.78	0.00	0.00	0.00

<b>Database:</b>	DB_Jul2216dt_v14	<b>Local Co-ordinate Reference:</b>	Well Almont 5-05-01L
<b>Company:</b>	Confluence Resources	<b>TVD Reference:</b>	RKB=5001+24 @ 5025.00ft
<b>Project:</b>	Weld County, Colorado	<b>MD Reference:</b>	RKB=5001+24 @ 5025.00ft
<b>Site:</b>	Section 06-T07N-R64W	<b>North Reference:</b>	True
<b>Well:</b>	Almont 5-05-01L	<b>Survey Calculation Method:</b>	Minimum Curvature
<b>Wellbore:</b>	Original Hole		
<b>Design:</b>	plan1		

Planned Survey									
Measured Depth (ft)	Inclination (°)	Azimuth (°)	Vertical Depth (ft)	+N/-S (ft)	+E/-W (ft)	Vertical Section (ft)	Dogleg Rate (°/100ft)	Build Rate (°/100ft)	Turn Rate (°/100ft)
10,000.00	90.00	89.53	7,032.00	-538.77	3,389.47	3,410.63	0.00	0.00	0.00
10,100.00	90.00	89.53	7,032.00	-537.94	3,489.46	3,510.49	0.00	0.00	0.00
10,200.00	90.00	89.53	7,032.00	-537.12	3,589.46	3,610.34	0.00	0.00	0.00
10,300.00	90.00	89.53	7,032.00	-536.29	3,689.46	3,710.19	0.00	0.00	0.00
10,400.00	90.00	89.53	7,032.00	-535.46	3,789.45	3,810.04	0.00	0.00	0.00
10,500.00	90.00	89.53	7,032.00	-534.64	3,889.45	3,909.90	0.00	0.00	0.00
10,600.00	90.00	89.53	7,032.00	-533.81	3,989.45	4,009.75	0.00	0.00	0.00
10,700.00	90.00	89.53	7,032.00	-532.98	4,089.44	4,109.60	0.00	0.00	0.00
10,800.00	90.00	89.53	7,032.00	-532.15	4,189.44	4,209.46	0.00	0.00	0.00
10,900.00	90.00	89.53	7,032.00	-531.33	4,289.44	4,309.31	0.00	0.00	0.00
11,000.00	90.00	89.53	7,032.00	-530.50	4,389.43	4,409.16	0.00	0.00	0.00
11,100.00	90.00	89.53	7,032.00	-529.67	4,489.43	4,509.02	0.00	0.00	0.00
11,200.00	90.00	89.53	7,032.00	-528.85	4,589.43	4,608.87	0.00	0.00	0.00
11,300.00	90.00	89.53	7,032.00	-528.02	4,689.42	4,708.72	0.00	0.00	0.00
11,400.00	90.00	89.53	7,032.00	-527.19	4,789.42	4,808.58	0.00	0.00	0.00
11,500.00	90.00	89.53	7,032.00	-526.37	4,889.42	4,908.43	0.00	0.00	0.00
11,600.00	90.00	89.53	7,032.00	-525.54	4,989.41	5,008.28	0.00	0.00	0.00
11,700.00	90.00	89.53	7,032.00	-524.71	5,089.41	5,108.14	0.00	0.00	0.00
11,800.00	90.00	89.53	7,032.00	-523.89	5,189.41	5,207.99	0.00	0.00	0.00
11,900.00	90.00	89.53	7,032.00	-523.06	5,289.40	5,307.84	0.00	0.00	0.00
12,000.00	90.00	89.53	7,032.00	-522.23	5,389.40	5,407.69	0.00	0.00	0.00
12,100.00	90.00	89.53	7,032.00	-521.41	5,489.40	5,507.55	0.00	0.00	0.00
12,200.00	90.00	89.53	7,032.00	-520.58	5,589.39	5,607.40	0.00	0.00	0.00
12,300.00	90.00	89.53	7,032.00	-519.75	5,689.39	5,707.25	0.00	0.00	0.00
12,400.00	90.00	89.53	7,032.00	-518.93	5,789.39	5,807.11	0.00	0.00	0.00
12,500.00	90.00	89.53	7,032.00	-518.10	5,889.38	5,906.96	0.00	0.00	0.00
12,600.00	90.00	89.53	7,032.00	-517.27	5,989.38	6,006.81	0.00	0.00	0.00
12,700.00	90.00	89.53	7,032.00	-516.45	6,089.37	6,106.67	0.00	0.00	0.00
12,800.00	90.00	89.53	7,032.00	-515.62	6,189.37	6,206.52	0.00	0.00	0.00
12,900.00	90.00	89.53	7,032.00	-514.79	6,289.37	6,306.37	0.00	0.00	0.00
13,000.00	90.00	89.53	7,032.00	-513.97	6,389.36	6,406.23	0.00	0.00	0.00
13,100.00	90.00	89.53	7,032.00	-513.14	6,489.36	6,506.08	0.00	0.00	0.00
13,200.00	90.00	89.53	7,032.00	-512.31	6,589.36	6,605.93	0.00	0.00	0.00
13,300.00	90.00	89.53	7,032.00	-511.49	6,689.35	6,705.79	0.00	0.00	0.00
13,400.00	90.00	89.53	7,032.00	-510.66	6,789.35	6,805.64	0.00	0.00	0.00
13,500.00	90.00	89.53	7,032.00	-509.83	6,889.35	6,905.49	0.00	0.00	0.00
13,600.00	90.00	89.53	7,032.00	-509.00	6,989.34	7,005.35	0.00	0.00	0.00
13,700.00	90.00	89.53	7,032.00	-508.18	7,089.34	7,105.20	0.00	0.00	0.00
13,800.00	90.00	89.53	7,032.00	-507.35	7,189.34	7,205.05	0.00	0.00	0.00
13,900.00	90.00	89.53	7,032.00	-506.52	7,289.33	7,304.90	0.00	0.00	0.00
14,000.00	90.00	89.53	7,032.00	-505.70	7,389.33	7,404.76	0.00	0.00	0.00
14,100.00	90.00	89.53	7,032.00	-504.87	7,489.33	7,504.61	0.00	0.00	0.00
14,200.00	90.00	89.53	7,032.00	-504.04	7,589.32	7,604.46	0.00	0.00	0.00
14,300.00	90.00	89.53	7,032.00	-503.22	7,689.32	7,704.32	0.00	0.00	0.00
14,400.00	90.00	89.53	7,032.00	-502.39	7,789.32	7,804.17	0.00	0.00	0.00
14,500.00	90.00	89.53	7,032.00	-501.56	7,889.31	7,904.02	0.00	0.00	0.00
14,600.00	90.00	89.53	7,032.00	-500.74	7,989.31	8,003.88	0.00	0.00	0.00
14,700.00	90.00	89.53	7,032.00	-499.91	8,089.31	8,103.73	0.00	0.00	0.00
14,800.00	90.00	89.53	7,032.00	-499.08	8,189.30	8,203.58	0.00	0.00	0.00
14,900.00	90.00	89.53	7,032.00	-498.26	8,289.30	8,303.44	0.00	0.00	0.00
15,000.00	90.00	89.53	7,032.00	-497.43	8,389.30	8,403.29	0.00	0.00	0.00
15,100.00	90.00	89.53	7,032.00	-496.60	8,489.29	8,503.14	0.00	0.00	0.00
15,200.00	90.00	89.53	7,032.00	-495.78	8,589.29	8,603.00	0.00	0.00	0.00
15,300.00	90.00	89.53	7,032.00	-494.95	8,689.29	8,702.85	0.00	0.00	0.00

<b>Database:</b>	DB_Jul2216dt_v14	<b>Local Co-ordinate Reference:</b>	Well Almont 5-05-01L
<b>Company:</b>	Confluence Resources	<b>TVD Reference:</b>	RKB=5001+24 @ 5025.00ft
<b>Project:</b>	Weld County, Colorado	<b>MD Reference:</b>	RKB=5001+24 @ 5025.00ft
<b>Site:</b>	Section 06-T07N-R64W	<b>North Reference:</b>	True
<b>Well:</b>	Almont 5-05-01L	<b>Survey Calculation Method:</b>	Minimum Curvature
<b>Wellbore:</b>	Original Hole		
<b>Design:</b>	plan1		

Planned Survey									
Measured Depth (ft)	Inclination (°)	Azimuth (°)	Vertical Depth (ft)	+N/-S (ft)	+E/-W (ft)	Vertical Section (ft)	Dogleg Rate (°/100ft)	Build Rate (°/100ft)	Turn Rate (°/100ft)
15,400.00	90.00	89.53	7,032.00	-494.12	8,789.28	8,802.70	0.00	0.00	0.00
15,500.00	90.00	89.53	7,032.00	-493.30	8,889.28	8,902.55	0.00	0.00	0.00
15,600.00	90.00	89.53	7,032.00	-492.47	8,989.28	9,002.41	0.00	0.00	0.00
15,700.00	90.00	89.53	7,032.00	-491.64	9,089.27	9,102.26	0.00	0.00	0.00
15,800.00	90.00	89.53	7,032.00	-490.82	9,189.27	9,202.11	0.00	0.00	0.00
15,900.00	90.00	89.53	7,032.00	-489.99	9,289.27	9,301.97	0.00	0.00	0.00
16,000.00	90.00	89.53	7,032.00	-489.16	9,389.26	9,401.82	0.00	0.00	0.00
16,100.00	90.00	89.53	7,032.00	-488.33	9,489.26	9,501.67	0.00	0.00	0.00
16,200.00	90.00	89.53	7,032.00	-487.51	9,589.26	9,601.53	0.00	0.00	0.00
16,300.00	90.00	89.53	7,032.00	-486.68	9,689.25	9,701.38	0.00	0.00	0.00
16,400.00	90.00	89.53	7,032.00	-485.85	9,789.25	9,801.23	0.00	0.00	0.00
16,500.00	90.00	89.53	7,032.00	-485.03	9,889.25	9,901.09	0.00	0.00	0.00
16,600.00	90.00	89.53	7,032.00	-484.20	9,989.24	10,000.94	0.00	0.00	0.00
16,700.00	90.00	89.53	7,032.00	-483.37	10,089.24	10,100.79	0.00	0.00	0.00
16,800.00	90.00	89.53	7,032.00	-482.55	10,189.23	10,200.65	0.00	0.00	0.00
16,900.00	90.00	89.53	7,032.00	-481.72	10,289.23	10,300.50	0.00	0.00	0.00
17,000.00	90.00	89.53	7,032.00	-480.89	10,389.23	10,400.35	0.00	0.00	0.00
17,060.89	90.00	89.53	7,032.00	-480.39	10,450.12	10,461.15	0.00	0.00	0.00
PBHL/TD 17060.89 MD/7032.00 TVD									

Design Targets									
Target Name - hit/miss target - Shape	Dip Angle (°)	Dip Dir. (°)	TVD (ft)	+N/-S (ft)	+E/-W (ft)	Northing (usft)	Easting (usft)	Latitude	Longitude
Almont 5-05-01L PBHL 1 - plan hits target center - Point	0.00	0.00	7,032.00	-480.39	10,450.12	14,747,119.72	1,766,307.63	40.60430103	-104.54644854
Almont 5-05-01L LP 184 - plan hits target center - Point	0.00	0.00	7,032.00	-560.18	799.39	14,746,994.33	1,756,657.41	40.60408802	-104.58121693

Plan Annotations				
Measured Depth (ft)	Vertical Depth (ft)	Local Coordinates		Comment
		+N/-S (ft)	+E/-W (ft)	
3,000.00	3,000.00	0.00	0.00	KOP Begin 1°/100' build
4,003.58	3,998.46	-79.26	37.48	Begin 10.04° tangent
6,551.81	6,507.69	-480.70	227.30	Begin 10°/100' build/turn
7,409.84	7,032.00	-560.18	799.39	Begin 90.00° lateral
17,060.89	7,032.00	-480.39	10,450.12	PBHL/TD 17060.89 MD/7032.00 TVD

<b>Database:</b>	DB_Jul2216dt_v14	<b>Local Co-ordinate Reference:</b>	Well Almont 5-05-01L
<b>Company:</b>	Confluence Resources	<b>TVD Reference:</b>	RKB=5001+24 @ 5025.00ft
<b>Project:</b>	Weld County, Colorado	<b>MD Reference:</b>	RKB=5001+24 @ 5025.00ft
<b>Site:</b>	Section 06-T07N-R64W	<b>North Reference:</b>	True
<b>Well:</b>	Almont 5-05-01L	<b>Survey Calculation Method:</b>	Minimum Curvature
<b>Wellbore:</b>	Original Hole		
<b>Design:</b>	plan1		

<b>Project</b>	Weld County, Colorado		
<b>Map System:</b>	Universal Transverse Mercator (US Survey Feet)	<b>System Datum:</b>	Mean Sea Level
<b>Geo Datum:</b>	NAD83 Colorado - HARN		
<b>Map Zone:</b>	Zone 13N (108 W to 102 W)		

Site		Section 06-T07N-R64W			
Site Position:		Northing:	14,746,184.54 usft	Latitude:	40.60187654
From:	Map	Easting:	1,755,730.03 usft	Longitude:	-104.58457171
Position Uncertainty:	0.00 ft	Slot Radius:	13-3/16 "	Grid Convergence:	0.27 °

Well	Almont 5-05-01L, Surf loc: 1272 FNL 325 FEL Section 06-T08N-R64W					
Well Position	+N/-S	0.00 ft	Northing:	14,747,550.73 usft	Latitude:	40.60562624
	+E/-W	0.00 ft	Easting:	1,755,855.38 usft	Longitude:	-104.58409688
Position Uncertainty		0.00 ft	Wellhead Elevation:		Ground Level:	5,001.00 ft

<b>Wellbore</b>	Original Hole				
<b>Magnetics</b>	<b>Model Name</b>	<b>Sample Date</b>	<b>Declination (°)</b>	<b>Dip Angle (°)</b>	<b>Field Strength (nT)</b>
	HDGM	2/22/2018	8.00	66.98	52,363.10000000

<b>Design</b>	plan1			
<b>Audit Notes:</b>				
<b>Version:</b>	<b>Phase:</b>	PLAN	<b>Tie On Depth:</b>	0.00
<b>Vertical Section:</b>	<b>Depth From (TVD) (ft)</b>	<b>+N/-S (ft)</b>	<b>+E/-W (ft)</b>	<b>Direction (°)</b>
	0.00	0.00	0.00	92.63

<b>Plan Survey Tool Program</b>	<b>Date</b>	2/22/2018		
<b>Depth From (ft)</b>	<b>Depth To (ft)</b>	<b>Survey (Wellbore)</b>	<b>Tool Name</b>	<b>Remarks</b>
1	0.00	17,060.89 plan1 (Original Hole)		

<b>Plan Sections</b>										
<b>Measured Depth (ft)</b>	<b>Inclination (°)</b>	<b>Azimuth (°)</b>	<b>Vertical Depth (ft)</b>	<b>+N/-S (ft)</b>	<b>+E/-W (ft)</b>	<b>Dogleg Rate (°/100ft)</b>	<b>Build Rate (°/100ft)</b>	<b>Turn Rate (°/100ft)</b>	<b>TFO (°)</b>	<b>Target</b>
0.00	0.00	0.00	0.00	0.00	0.00	0.00	0.00	0.00	0.00	
3,000.00	0.00	0.00	3,000.00	0.00	0.00	0.00	0.00	0.00	0.00	
4,003.58	10.04	154.69	3,998.46	-79.26	37.48	1.00	1.00	0.00	154.69	
6,551.81	10.04	154.69	6,507.69	-480.70	227.30	0.00	0.00	0.00	0.00	
7,409.84	90.00	89.53	7,032.00	-560.18	799.39	10.00	9.32	-7.59	-65.50	Almont 5-05-01L LP 1
17,060.89	90.00	89.53	7,032.00	-480.39	10,450.12	0.00	0.00	0.00	0.00	Almont 5-05-01L PBH

<b>Database:</b>	DB_Jul2216dt_v14	<b>Local Co-ordinate Reference:</b>	Well Almont 5-05-01L
<b>Company:</b>	Confluence Resources	<b>TVD Reference:</b>	RKB=5001+24 @ 5025.00ft
<b>Project:</b>	Weld County, Colorado	<b>MD Reference:</b>	RKB=5001+24 @ 5025.00ft
<b>Site:</b>	Section 06-T07N-R64W	<b>North Reference:</b>	True
<b>Well:</b>	Almont 5-05-01L	<b>Survey Calculation Method:</b>	Minimum Curvature
<b>Wellbore:</b>	Original Hole		
<b>Design:</b>	plan1		

Planned Survey									
Measured Depth (ft)	Inclination (°)	Azimuth (°)	Vertical Depth (ft)	+N/-S (ft)	+E/-W (ft)	Map Northing (usft)	Map Easting (usft)	Latitude	Longitude
0.00	0.00	0.00	0.00	0.00	0.00	14,747,550.73	1,755,855.38	40.60562624	-104.58409688
100.00	0.00	0.00	100.00	0.00	0.00	14,747,550.73	1,755,855.38	40.60562624	-104.58409688
200.00	0.00	0.00	200.00	0.00	0.00	14,747,550.73	1,755,855.38	40.60562624	-104.58409688
300.00	0.00	0.00	300.00	0.00	0.00	14,747,550.73	1,755,855.38	40.60562624	-104.58409688
400.00	0.00	0.00	400.00	0.00	0.00	14,747,550.73	1,755,855.38	40.60562624	-104.58409688
500.00	0.00	0.00	500.00	0.00	0.00	14,747,550.73	1,755,855.38	40.60562624	-104.58409688
600.00	0.00	0.00	600.00	0.00	0.00	14,747,550.73	1,755,855.38	40.60562624	-104.58409688
700.00	0.00	0.00	700.00	0.00	0.00	14,747,550.73	1,755,855.38	40.60562624	-104.58409688
800.00	0.00	0.00	800.00	0.00	0.00	14,747,550.73	1,755,855.38	40.60562624	-104.58409688
900.00	0.00	0.00	900.00	0.00	0.00	14,747,550.73	1,755,855.38	40.60562624	-104.58409688
1,000.00	0.00	0.00	1,000.00	0.00	0.00	14,747,550.73	1,755,855.38	40.60562624	-104.58409688
1,100.00	0.00	0.00	1,100.00	0.00	0.00	14,747,550.73	1,755,855.38	40.60562624	-104.58409688
1,200.00	0.00	0.00	1,200.00	0.00	0.00	14,747,550.73	1,755,855.38	40.60562624	-104.58409688
1,300.00	0.00	0.00	1,300.00	0.00	0.00	14,747,550.73	1,755,855.38	40.60562624	-104.58409688
1,400.00	0.00	0.00	1,400.00	0.00	0.00	14,747,550.73	1,755,855.38	40.60562624	-104.58409688
1,500.00	0.00	0.00	1,500.00	0.00	0.00	14,747,550.73	1,755,855.38	40.60562624	-104.58409688
1,600.00	0.00	0.00	1,600.00	0.00	0.00	14,747,550.73	1,755,855.38	40.60562624	-104.58409688
1,700.00	0.00	0.00	1,700.00	0.00	0.00	14,747,550.73	1,755,855.38	40.60562624	-104.58409688
1,800.00	0.00	0.00	1,800.00	0.00	0.00	14,747,550.73	1,755,855.38	40.60562624	-104.58409688
1,900.00	0.00	0.00	1,900.00	0.00	0.00	14,747,550.73	1,755,855.38	40.60562624	-104.58409688
2,000.00	0.00	0.00	2,000.00	0.00	0.00	14,747,550.73	1,755,855.38	40.60562624	-104.58409688
2,100.00	0.00	0.00	2,100.00	0.00	0.00	14,747,550.73	1,755,855.38	40.60562624	-104.58409688
2,200.00	0.00	0.00	2,200.00	0.00	0.00	14,747,550.73	1,755,855.38	40.60562624	-104.58409688
2,300.00	0.00	0.00	2,300.00	0.00	0.00	14,747,550.73	1,755,855.38	40.60562624	-104.58409688
2,400.00	0.00	0.00	2,400.00	0.00	0.00	14,747,550.73	1,755,855.38	40.60562624	-104.58409688
2,500.00	0.00	0.00	2,500.00	0.00	0.00	14,747,550.73	1,755,855.38	40.60562624	-104.58409688
2,600.00	0.00	0.00	2,600.00	0.00	0.00	14,747,550.73	1,755,855.38	40.60562624	-104.58409688
2,700.00	0.00	0.00	2,700.00	0.00	0.00	14,747,550.73	1,755,855.38	40.60562624	-104.58409688
2,800.00	0.00	0.00	2,800.00	0.00	0.00	14,747,550.73	1,755,855.38	40.60562624	-104.58409688
2,900.00	0.00	0.00	2,900.00	0.00	0.00	14,747,550.73	1,755,855.38	40.60562624	-104.58409688
3,000.00	0.00	0.00	3,000.00	0.00	0.00	14,747,550.73	1,755,855.38	40.60562624	-104.58409688
<b>KOP Begin 1°/100' build</b>									
3,100.00	1.00	154.69	3,099.99	-0.79	0.37	14,747,549.94	1,755,855.76	40.60562408	-104.58409554
3,200.00	2.00	154.69	3,199.96	-3.16	1.49	14,747,547.58	1,755,856.89	40.60561758	-104.58409151
3,300.00	3.00	154.69	3,299.86	-7.10	3.36	14,747,543.65	1,755,858.77	40.60560675	-104.58408479
3,400.00	4.00	154.69	3,399.68	-12.62	5.97	14,747,538.14	1,755,861.40	40.60559160	-104.58407539
3,500.00	5.00	154.69	3,499.37	-19.71	9.32	14,747,531.06	1,755,864.79	40.60557212	-104.58406330
3,600.00	6.00	154.69	3,598.90	-28.38	13.42	14,747,522.42	1,755,868.93	40.60554833	-104.58404854
3,700.00	7.00	154.69	3,698.26	-38.61	18.26	14,747,512.21	1,755,873.82	40.60552023	-104.58403111
3,800.00	8.00	154.69	3,797.40	-50.41	23.84	14,747,500.43	1,755,879.45	40.60548783	-104.58401101
3,900.00	9.00	154.69	3,896.30	-63.77	30.15	14,747,487.10	1,755,885.83	40.60545114	-104.58398825
4,000.00	10.00	154.69	3,994.93	-78.69	37.21	14,747,472.21	1,755,892.96	40.60541017	-104.58396283
4,003.58	10.04	154.69	3,998.46	-79.26	37.48	14,747,471.65	1,755,893.23	40.60540862	-104.58396187
<b>Begin 10.04° tangent</b>									
4,100.00	10.04	154.69	4,093.40	-94.44	44.66	14,747,456.50	1,755,900.48	40.60536691	-104.58393599
4,200.00	10.04	154.69	4,191.87	-110.20	52.11	14,747,440.78	1,755,908.01	40.60532365	-104.58390916
4,300.00	10.04	154.69	4,290.34	-125.95	59.56	14,747,425.06	1,755,915.53	40.60528039	-104.58388232
4,400.00	10.04	154.69	4,388.81	-141.71	67.00	14,747,409.34	1,755,923.05	40.60523714	-104.58385548
4,500.00	10.04	154.69	4,487.28	-157.46	74.45	14,747,393.62	1,755,930.58	40.60519388	-104.58382864
4,600.00	10.04	154.69	4,585.75	-173.21	81.90	14,747,377.90	1,755,938.10	40.60515062	-104.58380181
4,700.00	10.04	154.69	4,684.22	-188.97	89.35	14,747,362.19	1,755,945.62	40.60510736	-104.58377497
4,800.00	10.04	154.69	4,782.69	-204.72	96.80	14,747,346.47	1,755,953.15	40.60506410	-104.58374813
4,900.00	10.04	154.69	4,881.16	-220.48	104.25	14,747,330.75	1,755,960.67	40.60502084	-104.58372130
5,000.00	10.04	154.69	4,979.63	-236.23	111.70	14,747,315.03	1,755,968.19	40.60497758	-104.58369446

<b>Database:</b>	DB_Jul2216dt_v14	<b>Local Co-ordinate Reference:</b>	Well Almont 5-05-01L
<b>Company:</b>	Confluence Resources	<b>TVD Reference:</b>	RKB=5001+24 @ 5025.00ft
<b>Project:</b>	Weld County, Colorado	<b>MD Reference:</b>	RKB=5001+24 @ 5025.00ft
<b>Site:</b>	Section 06-T07N-R64W	<b>North Reference:</b>	True
<b>Well:</b>	Almont 5-05-01L	<b>Survey Calculation Method:</b>	Minimum Curvature
<b>Wellbore:</b>	Original Hole		
<b>Design:</b>	plan1		

Planned Survey									
Measured Depth (ft)	Inclination (°)	Azimuth (°)	Vertical Depth (ft)	+N/-S (ft)	+E/-W (ft)	Map Northing (usft)	Map Easting (usft)	Latitude	Longitude
5,100.00	10.04	154.69	5,078.10	-251.99	119.15	14,747,299.31	1,755,975.72	40.60493433	-104.58366762
5,200.00	10.04	154.69	5,176.57	-267.74	126.60	14,747,283.59	1,755,983.24	40.60489107	-104.58364079
5,300.00	10.04	154.69	5,275.04	-283.49	134.05	14,747,267.87	1,755,990.76	40.60484781	-104.58361395
5,400.00	10.04	154.69	5,373.51	-299.25	141.50	14,747,252.15	1,755,998.29	40.60480455	-104.58358711
5,500.00	10.04	154.69	5,471.98	-315.00	148.95	14,747,236.44	1,756,005.81	40.60476129	-104.58356028
5,600.00	10.04	154.69	5,570.45	-330.76	156.39	14,747,220.72	1,756,013.33	40.60471803	-104.58353344
5,700.00	10.04	154.69	5,668.92	-346.51	163.84	14,747,205.00	1,756,020.86	40.60467478	-104.58350660
5,800.00	10.04	154.69	5,767.39	-362.26	171.29	14,747,189.28	1,756,028.38	40.60463152	-104.58347977
5,900.00	10.04	154.69	5,865.86	-378.02	178.74	14,747,173.56	1,756,035.90	40.60458826	-104.58345293
6,000.00	10.04	154.69	5,964.33	-393.77	186.19	14,747,157.84	1,756,043.43	40.60454500	-104.58342609
6,100.00	10.04	154.69	6,062.80	-409.53	193.64	14,747,142.12	1,756,050.95	40.60450174	-104.58339926
6,200.00	10.04	154.69	6,161.27	-425.28	201.09	14,747,126.41	1,756,058.48	40.60445848	-104.58337242
6,300.00	10.04	154.69	6,259.74	-441.03	208.54	14,747,110.69	1,756,066.00	40.60441522	-104.58334558
6,400.00	10.04	154.69	6,358.21	-456.79	215.99	14,747,094.97	1,756,073.52	40.60437197	-104.58331875
6,500.00	10.04	154.69	6,456.68	-472.54	223.44	14,747,079.25	1,756,081.05	40.60432871	-104.58329191
6,551.81	10.04	154.69	6,507.69	-480.70	227.30	14,747,071.11	1,756,084.94	40.60430630	-104.58327801
Begin 10°/100' build/turn									
6,600.00	12.80	134.51	6,554.95	-488.25	232.90	14,747,063.59	1,756,090.58	40.60428558	-104.58325781
6,700.00	21.02	114.23	6,650.62	-503.41	257.22	14,747,048.54	1,756,114.97	40.60424394	-104.58317021
6,800.00	30.30	105.48	6,740.69	-517.54	297.98	14,747,034.60	1,756,155.80	40.60420514	-104.58302335
6,900.00	39.90	100.60	6,822.43	-530.21	353.96	14,747,022.20	1,756,211.84	40.60417036	-104.58282168
7,000.00	49.64	97.37	6,893.34	-541.02	423.45	14,747,011.72	1,756,281.38	40.60414066	-104.58257133
7,100.00	59.45	94.97	6,951.28	-549.66	504.34	14,747,003.46	1,756,362.31	40.60411694	-104.58227991
7,200.00	69.29	93.01	6,994.48	-555.86	594.17	14,746,997.69	1,756,452.17	40.60409992	-104.58195628
7,300.00	79.16	91.29	7,021.64	-559.42	690.22	14,746,994.58	1,756,548.23	40.60409012	-104.58161026
7,400.00	89.03	89.68	7,031.92	-560.25	789.56	14,746,994.22	1,756,647.57	40.60408783	-104.58125237
7,409.84	90.00	89.53	7,032.00	-560.18	799.39	14,746,994.33	1,756,657.41	40.60408802	-104.58121693
Begin 90.00° lateral									
7,500.00	90.00	89.53	7,032.00	-559.44	889.55	14,746,995.50	1,756,747.56	40.60409006	-104.58089212
7,600.00	90.00	89.53	7,032.00	-558.61	989.55	14,746,996.80	1,756,847.55	40.60409232	-104.58053187
7,700.00	90.00	89.53	7,032.00	-557.79	1,089.55	14,746,998.10	1,756,947.55	40.60409458	-104.58017161
7,800.00	90.00	89.53	7,032.00	-556.96	1,189.54	14,746,999.40	1,757,047.54	40.60409684	-104.57981136
7,900.00	90.00	89.53	7,032.00	-556.13	1,289.54	14,747,000.70	1,757,147.53	40.60409909	-104.57945110
8,000.00	90.00	89.53	7,032.00	-555.30	1,389.54	14,747,002.00	1,757,247.52	40.60410135	-104.57909085
8,100.00	90.00	89.53	7,032.00	-554.48	1,489.53	14,747,003.30	1,757,347.51	40.60410360	-104.57873060
8,200.00	90.00	89.53	7,032.00	-553.65	1,589.53	14,747,004.60	1,757,447.50	40.60410585	-104.57837034
8,300.00	90.00	89.53	7,032.00	-552.82	1,689.53	14,747,005.89	1,757,547.49	40.60410811	-104.57801009
8,400.00	90.00	89.53	7,032.00	-552.00	1,789.52	14,747,007.19	1,757,647.49	40.60411036	-104.57764983
8,500.00	90.00	89.53	7,032.00	-551.17	1,889.52	14,747,008.49	1,757,747.48	40.60411261	-104.57728958
8,600.00	90.00	89.53	7,032.00	-550.34	1,989.51	14,747,009.79	1,757,847.47	40.60411486	-104.57692932
8,700.00	90.00	89.53	7,032.00	-549.52	2,089.51	14,747,011.09	1,757,947.46	40.60411710	-104.57656907
8,800.00	90.00	89.53	7,032.00	-548.69	2,189.51	14,747,012.39	1,758,047.45	40.60411935	-104.57620882
8,900.00	90.00	89.53	7,032.00	-547.86	2,289.50	14,747,013.69	1,758,147.44	40.60412159	-104.57584856
9,000.00	90.00	89.53	7,032.00	-547.04	2,389.50	14,747,014.99	1,758,247.43	40.60412384	-104.57548831
9,100.00	90.00	89.53	7,032.00	-546.21	2,489.50	14,747,016.29	1,758,347.43	40.60412608	-104.57512805
9,200.00	90.00	89.53	7,032.00	-545.38	2,589.49	14,747,017.59	1,758,447.42	40.60412832	-104.57476780
9,300.00	90.00	89.53	7,032.00	-544.56	2,689.49	14,747,018.89	1,758,547.41	40.60413056	-104.57440754
9,400.00	90.00	89.53	7,032.00	-543.73	2,789.49	14,747,020.19	1,758,647.40	40.60413280	-104.57404729
9,500.00	90.00	89.53	7,032.00	-542.90	2,889.48	14,747,021.49	1,758,747.39	40.60413504	-104.57368703
9,600.00	90.00	89.53	7,032.00	-542.08	2,989.48	14,747,022.78	1,758,847.38	40.60413728	-104.57332678
9,700.00	90.00	89.53	7,032.00	-541.25	3,089.48	14,747,024.08	1,758,947.37	40.60413952	-104.57296653
9,800.00	90.00	89.53	7,032.00	-540.42	3,189.47	14,747,025.38	1,759,047.36	40.60414175	-104.57260627
9,900.00	90.00	89.53	7,032.00	-539.60	3,289.47	14,747,026.68	1,759,147.36	40.60414398	-104.57224602
10,000.00	90.00	89.53	7,032.00	-538.77	3,389.47	14,747,027.98	1,759,247.35	40.60414622	-104.57188576

<b>Database:</b>	DB_Jul2216dt_v14	<b>Local Co-ordinate Reference:</b>	Well Almont 5-05-01L
<b>Company:</b>	Confluence Resources	<b>TVD Reference:</b>	RKB=5001+24 @ 5025.00ft
<b>Project:</b>	Weld County, Colorado	<b>MD Reference:</b>	RKB=5001+24 @ 5025.00ft
<b>Site:</b>	Section 06-T07N-R64W	<b>North Reference:</b>	True
<b>Well:</b>	Almont 5-05-01L	<b>Survey Calculation Method:</b>	Minimum Curvature
<b>Wellbore:</b>	Original Hole		
<b>Design:</b>	plan1		

Planned Survey									
Measured Depth (ft)	Inclination (°)	Azimuth (°)	Vertical Depth (ft)	+N/-S (ft)	+E/-W (ft)	Map Northing (usft)	Map Easting (usft)	Latitude	Longitude
10,100.00	90.00	89.53	7,032.00	-537.94	3,489.46	14,747,029.28	1,759,347.34	40.60414845	-104.57152551
10,200.00	90.00	89.53	7,032.00	-537.12	3,589.46	14,747,030.58	1,759,447.33	40.60415068	-104.57116525
10,300.00	90.00	89.53	7,032.00	-536.29	3,689.46	14,747,031.88	1,759,547.32	40.60415291	-104.57080500
10,400.00	90.00	89.53	7,032.00	-535.46	3,789.45	14,747,033.18	1,759,647.31	40.60415514	-104.57044474
10,500.00	90.00	89.53	7,032.00	-534.64	3,889.45	14,747,034.48	1,759,747.30	40.60415736	-104.57008449
10,600.00	90.00	89.53	7,032.00	-533.81	3,989.45	14,747,035.78	1,759,847.30	40.60415959	-104.56972423
10,700.00	90.00	89.53	7,032.00	-532.98	4,089.44	14,747,037.08	1,759,947.29	40.60416182	-104.56936398
10,800.00	90.00	89.53	7,032.00	-532.15	4,189.44	14,747,038.38	1,760,047.28	40.60416404	-104.56900372
10,900.00	90.00	89.53	7,032.00	-531.33	4,289.44	14,747,039.68	1,760,147.27	40.60416626	-104.56864347
11,000.00	90.00	89.53	7,032.00	-530.50	4,389.43	14,747,040.97	1,760,247.26	40.60416848	-104.56828322
11,100.00	90.00	89.53	7,032.00	-529.67	4,489.43	14,747,042.27	1,760,347.25	40.60417070	-104.56792296
11,200.00	90.00	89.53	7,032.00	-528.85	4,589.43	14,747,043.57	1,760,447.24	40.60417292	-104.56756271
11,300.00	90.00	89.53	7,032.00	-528.02	4,689.42	14,747,044.87	1,760,547.24	40.60417514	-104.56720245
11,400.00	90.00	89.53	7,032.00	-527.19	4,789.42	14,747,046.17	1,760,647.23	40.60417736	-104.56684220
11,500.00	90.00	89.53	7,032.00	-526.37	4,889.42	14,747,047.47	1,760,747.22	40.60417957	-104.56648194
11,600.00	90.00	89.53	7,032.00	-525.54	4,989.41	14,747,048.77	1,760,847.21	40.60418179	-104.56612169
11,700.00	90.00	89.53	7,032.00	-524.71	5,089.41	14,747,050.07	1,760,947.20	40.60418400	-104.56576143
11,800.00	90.00	89.53	7,032.00	-523.89	5,189.41	14,747,051.37	1,761,047.19	40.60418622	-104.56540118
11,900.00	90.00	89.53	7,032.00	-523.06	5,289.40	14,747,052.67	1,761,147.18	40.60418843	-104.56504092
12,000.00	90.00	89.53	7,032.00	-522.23	5,389.40	14,747,053.97	1,761,247.17	40.60419064	-104.56468067
12,100.00	90.00	89.53	7,032.00	-521.41	5,489.40	14,747,055.27	1,761,347.17	40.60419285	-104.56432041
12,200.00	90.00	89.53	7,032.00	-520.58	5,589.39	14,747,056.57	1,761,447.16	40.60419506	-104.56396016
12,300.00	90.00	89.53	7,032.00	-519.75	5,689.39	14,747,057.86	1,761,547.15	40.60419726	-104.56359990
12,400.00	90.00	89.53	7,032.00	-518.93	5,789.39	14,747,059.16	1,761,647.14	40.60419947	-104.56323965
12,500.00	90.00	89.53	7,032.00	-518.10	5,889.38	14,747,060.46	1,761,747.13	40.60420167	-104.56287939
12,600.00	90.00	89.53	7,032.00	-517.27	5,989.38	14,747,061.76	1,761,847.12	40.60420388	-104.56251914
12,700.00	90.00	89.53	7,032.00	-516.45	6,089.37	14,747,063.06	1,761,947.11	40.60420608	-104.56215888
12,800.00	90.00	89.53	7,032.00	-515.62	6,189.37	14,747,064.36	1,762,047.11	40.60420828	-104.56179863
12,900.00	90.00	89.53	7,032.00	-514.79	6,289.37	14,747,065.66	1,762,147.10	40.60421048	-104.56143837
13,000.00	90.00	89.53	7,032.00	-513.97	6,389.36	14,747,066.96	1,762,247.09	40.60421268	-104.56107812
13,100.00	90.00	89.53	7,032.00	-513.14	6,489.36	14,747,068.26	1,762,347.08	40.60421488	-104.56071786
13,200.00	90.00	89.53	7,032.00	-512.31	6,589.36	14,747,069.56	1,762,447.07	40.60421707	-104.56035761
13,300.00	90.00	89.53	7,032.00	-511.49	6,689.35	14,747,070.86	1,762,547.06	40.60421927	-104.55999735
13,400.00	90.00	89.53	7,032.00	-510.66	6,789.35	14,747,072.16	1,762,647.05	40.60422146	-104.55963710
13,500.00	90.00	89.53	7,032.00	-509.83	6,889.35	14,747,073.46	1,762,747.04	40.60422366	-104.55927684
13,600.00	90.00	89.53	7,032.00	-509.00	6,989.34	14,747,074.75	1,762,847.04	40.60422585	-104.55891659
13,700.00	90.00	89.53	7,032.00	-508.18	7,089.34	14,747,076.05	1,762,947.03	40.60422804	-104.55855633
13,800.00	90.00	89.53	7,032.00	-507.35	7,189.34	14,747,077.35	1,763,047.02	40.60423023	-104.55819608
13,900.00	90.00	89.53	7,032.00	-506.52	7,289.33	14,747,078.65	1,763,147.01	40.60423242	-104.55783582
14,000.00	90.00	89.53	7,032.00	-505.70	7,389.33	14,747,079.95	1,763,247.00	40.60423461	-104.55747557
14,100.00	90.00	89.53	7,032.00	-504.87	7,489.33	14,747,081.25	1,763,346.99	40.60423680	-104.55711531
14,200.00	90.00	89.53	7,032.00	-504.04	7,589.32	14,747,082.55	1,763,446.98	40.60423898	-104.55675506
14,300.00	90.00	89.53	7,032.00	-503.22	7,689.32	14,747,083.85	1,763,546.98	40.60424117	-104.55639480
14,400.00	90.00	89.53	7,032.00	-502.39	7,789.32	14,747,085.15	1,763,646.97	40.60424335	-104.55603455
14,500.00	90.00	89.53	7,032.00	-501.56	7,889.31	14,747,086.45	1,763,746.96	40.60424553	-104.55567429
14,600.00	90.00	89.53	7,032.00	-500.74	7,989.31	14,747,087.75	1,763,846.95	40.60424771	-104.55531404
14,700.00	90.00	89.53	7,032.00	-499.91	8,089.31	14,747,089.05	1,763,946.94	40.60424989	-104.55495378
14,800.00	90.00	89.53	7,032.00	-499.08	8,189.30	14,747,090.35	1,764,046.93	40.60425207	-104.55459353
14,900.00	90.00	89.53	7,032.00	-498.26	8,289.30	14,747,091.64	1,764,146.92	40.60425425	-104.55423327
15,000.00	90.00	89.53	7,032.00	-497.43	8,389.30	14,747,092.94	1,764,246.92	40.60425643	-104.55387302
15,100.00	90.00	89.53	7,032.00	-496.60	8,489.29	14,747,094.24	1,764,346.91	40.60425860	-104.55351276
15,200.00	90.00	89.53	7,032.00	-495.78	8,589.29	14,747,095.54	1,764,446.90	40.60426078	-104.55315251
15,300.00	90.00	89.53	7,032.00	-494.95	8,689.29	14,747,096.84	1,764,546.89	40.60426295	-104.55279225
15,400.00	90.00	89.53	7,032.00	-494.12	8,789.28	14,747,098.14	1,764,646.88	40.60426512	-104.55243200
15,500.00	90.00	89.53	7,032.00	-493.30	8,889.28	14,747,099.44	1,764,746.87	40.60426729	-104.55207174

<b>Database:</b>	DB_Jul2216dt_v14	<b>Local Co-ordinate Reference:</b>	Well Almont 5-05-01L
<b>Company:</b>	Confluence Resources	<b>TVD Reference:</b>	RKB=5001+24 @ 5025.00ft
<b>Project:</b>	Weld County, Colorado	<b>MD Reference:</b>	RKB=5001+24 @ 5025.00ft
<b>Site:</b>	Section 06-T07N-R64W	<b>North Reference:</b>	True
<b>Well:</b>	Almont 5-05-01L	<b>Survey Calculation Method:</b>	Minimum Curvature
<b>Wellbore:</b>	Original Hole		
<b>Design:</b>	plan1		

Planned Survey									
Measured Depth (ft)	Inclination (°)	Azimuth (°)	Vertical Depth (ft)	+N/-S (ft)	+E/-W (ft)	Map Northing (usft)	Map Easting (usft)	Latitude	Longitude
15,600.00	90.00	89.53	7,032.00	-492.47	8,989.28	14,747,100.74	1,764,846.86	40.60426946	-104.55171149
15,700.00	90.00	89.53	7,032.00	-491.64	9,089.27	14,747,102.04	1,764,946.85	40.60427163	-104.55135123
15,800.00	90.00	89.53	7,032.00	-490.82	9,189.27	14,747,103.34	1,765,046.85	40.60427380	-104.55099097
15,900.00	90.00	89.53	7,032.00	-489.99	9,289.27	14,747,104.64	1,765,146.84	40.60427597	-104.55063072
16,000.00	90.00	89.53	7,032.00	-489.16	9,389.26	14,747,105.94	1,765,246.83	40.60427813	-104.55027046
16,100.00	90.00	89.53	7,032.00	-488.33	9,489.26	14,747,107.24	1,765,346.82	40.60428030	-104.54991021
16,200.00	90.00	89.53	7,032.00	-487.51	9,589.26	14,747,108.53	1,765,446.81	40.60428246	-104.54954995
16,300.00	90.00	89.53	7,032.00	-486.68	9,689.25	14,747,109.83	1,765,546.80	40.60428462	-104.54918970
16,400.00	90.00	89.53	7,032.00	-485.85	9,789.25	14,747,111.13	1,765,646.79	40.60428678	-104.54882944
16,500.00	90.00	89.53	7,032.00	-485.03	9,889.25	14,747,112.43	1,765,746.79	40.60428894	-104.54846919
16,600.00	90.00	89.53	7,032.00	-484.20	9,989.24	14,747,113.73	1,765,846.78	40.60429110	-104.54810893
16,700.00	90.00	89.53	7,032.00	-483.37	10,089.24	14,747,115.03	1,765,946.77	40.60429326	-104.54774868
16,800.00	90.00	89.53	7,032.00	-482.55	10,189.23	14,747,116.33	1,766,046.76	40.60429541	-104.54738842
16,900.00	90.00	89.53	7,032.00	-481.72	10,289.23	14,747,117.63	1,766,146.75	40.60429757	-104.54702817
17,000.00	90.00	89.53	7,032.00	-480.89	10,389.23	14,747,118.93	1,766,246.74	40.60429972	-104.54666791
17,060.89	90.00	89.53	7,032.00	-480.39	10,450.12	14,747,119.72	1,766,307.63	40.60430103	-104.54644854
PBHL/TD 17060.89 MD/7032.00 TVD									

Design Targets									
Target Name - hit/miss target - Shape	Dip Angle (°)	Dip Dir. (°)	TVD (ft)	+N/-S (ft)	+E/-W (ft)	Northing (usft)	Easting (usft)	Latitude	Longitude
Almont 5-05-01L PBHL 1 - plan hits target center - Point	0.00	0.00	7,032.00	-480.39	10,450.12	14,747,119.72	1,766,307.63	40.60430103	-104.54644854
Almont 5-05-01L LP 184 - plan hits target center - Point	0.00	0.00	7,032.00	-560.18	799.39	14,746,994.33	1,756,657.41	40.60408802	-104.58121693

Plan Annotations				
Measured Depth (ft)	Vertical Depth (ft)	Local Coordinates		Comment
		+N/-S (ft)	+E/-W (ft)	
3,000.00	3,000.00	0.00	0.00	KOP Begin 1°/100' build
4,003.58	3,998.46	-79.26	37.48	Begin 10.04° tangent
6,551.81	6,507.69	-480.70	227.30	Begin 10°/100' build/turn
7,409.84	7,032.00	-560.18	799.39	Begin 90.00° lateral
17,060.89	7,032.00	-480.39	10,450.12	PBHL/TD 17060.89 MD/7032.00 TVD