

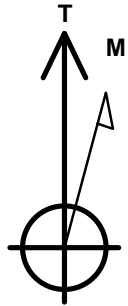
Clear Creek Resource Partners

Well Name: **True Ranch Fee 503-2326H**

Surface Location: True Ranch Fee 2326H East Pad Sec.23-T15N-R65W
 North American Datum 1983 , US State Plane 1983, Colorado Northern Zone
 Ground Elevation: 5858.0
 +N/-S+E/-W Northing Easting Longitude Slot
 0.0 0.0 1607878.57 3241910.20 40.998700 -104.623660
 Original Well Elev WELL @ 5881.0ft (Original Well Elev)

WELLBORE TARGET DETAILS

Name	TVD	+N/-S	+E/-W	Shape
SHL 400'FNL & 1350'FEL, Sec.23	1.0	0.0	0.0	Point
BHL 600'FSL & 2300'FEL, Sec.26	8570.0	-9524.0	-1090.8	Point
LPL 600'FNL & 2300'FEL, Sec.23	8584.0	-247.7	-955.1	Point



Azimuths to True North
 Magnetic North: 8.55°

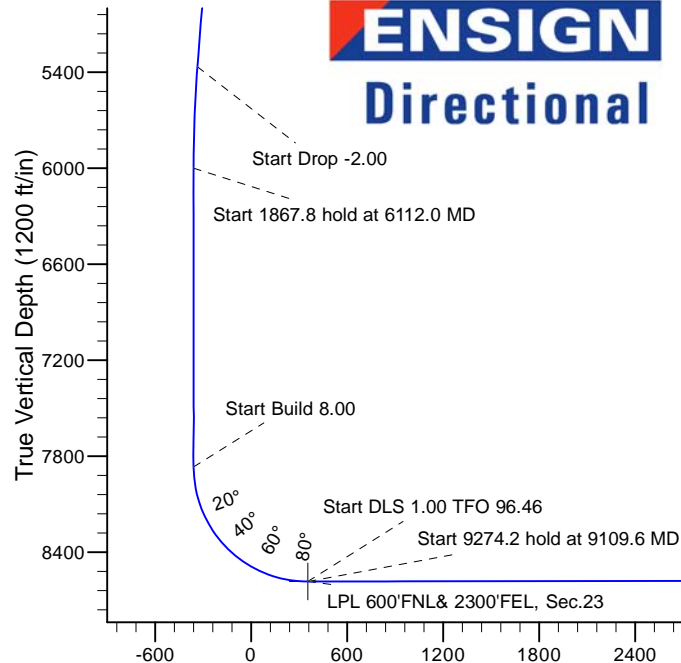
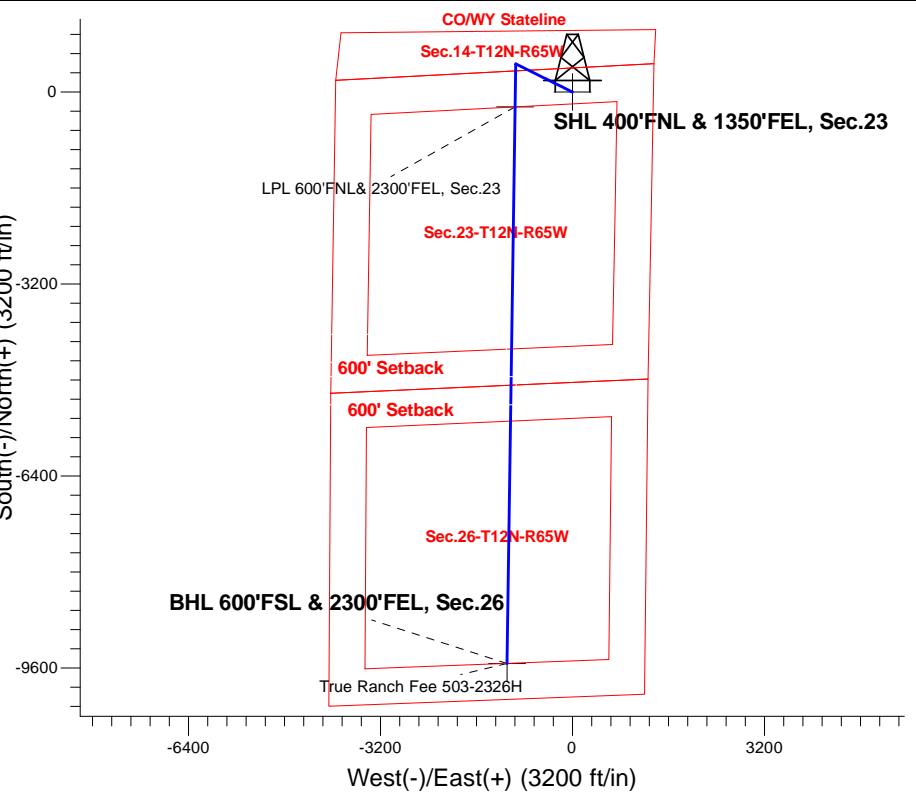
Magnetic Field
 Strength: 52727.2snT
 Dip Angle: 67.32°
 Date: 2/1/2018
 Model: HDGM

True Ranch Fee 2326H East Pad Sec.23-T15N-R65W
True Ranch Fee 503-2326H
Plan #1 (1-29-18)
13:41, February 02 2018

ANNOTATIONS

TVD	MD	Annotation
600.0	600.0	Start Build 1.50
1445.3	1452.3	Start 4020.4 hold at 1452.3 MD
5366.0	5472.8	Start Drop -2.00
6000.0	6112.0	Start 1867.8 hold at 6112.0 MD
7867.8	7979.8	Start Build 8.00
8584.0	9106.4	Start DLS 1.00 TFO 96.46
8584.0	9109.6	Start 9274.2 hold at 9109.6 MD
8570.0	18383.7	TD at 18383.7

South(-)/North(+) (3200 ft/in)



SECTION DETAILS

Sec	MD	Inc	Azi	TVD	+N/-S	+E/-W	Dleg	TFace	VSect	Target
1	0.0	0.00	0.00	0.0	0.0	0.0	0.00	0.00	0.0	
2	600.0	0.00	0.00	600.0	0.0	0.0	0.00	0.00	0.0	
3	1452.3	12.79	296.44	1445.3	42.2	-84.8	1.50	296.44	-32.3	
4	5472.8	12.79	296.44	5366.0	438.4	-881.4	0.00	0.00	-335.2	
5	6112.0	0.00	0.00	6000.0	470.0	-945.0	2.00	180.00	-359.4	
6	7979.8	0.00	0.00	7867.8	470.0	-945.0	0.00	0.00	-359.4	
7	9106.0	90.09	180.81	8584.0	-247.3	-955.1	8.00	180.81	354.3	
8	9106.4	90.09	180.81	8584.0	-247.7	-955.1	0.00	0.00	354.8	LPL 600'FNL & 2300'FEL, Sec.23
9	9109.6	90.09	180.84	8584.0	-250.9	-955.2	1.00	96.46	357.9	
10	18383.7	90.09	180.84	8570.0	-9524.0	-1090.8	0.00	0.00	9586.3	BHL 600'FSL & 2300'FEL, Sec.26

BHL 600'FSL & 2300'FEL, Sec.26

Vertical Section at 186.53° (1200 ft/in)



Clear Creek Resource Partners

SEC.23-T15N-R65W

True Ranch Fee 2326H East Pad Sec.23-T15N-R65W

True Ranch Fee 503-2326H

Wellbore #1

Plan: Plan #1 (1-29-18)

Standard Planning Report

02 February, 2018

Database:	US_EDM	Local Co-ordinate Reference:	Well True Ranch Fee 503-2326H
Company:	Clear Creek Resource Partners	TVD Reference:	WELL @ 5881.0ft (Original Well Elev)
Project:	SEC.23-T15N-R65W	MD Reference:	WELL @ 5881.0ft (Original Well Elev)
Site:	True Ranch Fee 2326H East Pad Sec.23-T15N-R65W	North Reference:	True
Well:	True Ranch Fee 503-2326H	Survey Calculation Method:	Minimum Curvature
Wellbore:	Wellbore #1		
Design:	Plan #1 (1-29-18)		

Project	SEC.23-T15N-R65W, Weld County, CO		
Map System:	US State Plane 1983	System Datum:	Mean Sea Level
Geo Datum:	North American Datum 1983		Using Well Reference Point
Map Zone:	Colorado Northern Zone		Using geodetic scale factor

Site	True Ranch Fee 2326H East Pad Sec.23-T15N-R65W				
Site Position:		Northing:	1,607,887.36 usft	Latitude:	40.998720
From:	Lat/Long	Easting:	3,242,061.95 usft	Longitude:	-104.623110
Position Uncertainty:	0.0 ft	Slot Radius:	13-3/16 "	Grid Convergence:	0.57

Well	True Ranch Fee 503-2326H					
Well Position	+N/-S	-7.3 ft	Northing:	1,607,878.56 usft	Latitude:	40.998700
	+E/-W	-151.8 ft	Easting:	3,241,910.21 usft	Longitude:	-104.623660
Position Uncertainty		0.0 ft	Wellhead Elevation:	0.0 ft	Ground Level:	5,858.0 ft

Wellbore	Wellbore #1				
Magnetics	Model Name	Sample Date	Declination (°)	Dip Angle (°)	Field Strength (nT)
	HDGM	2/1/2018	8.55	67.32	52,727

Design	Plan #1 (1-29-18)			
Audit Notes:				
Version:	Phase:	PROTOTYPE	Tie On Depth:	0.0
Vertical Section:	Depth From (TVD) (ft)	+N/-S (ft)	+E/-W (ft)	Direction (°)
	0.0	0.0	0.0	186.53

Plan Sections										
Measured Depth (ft)	Inclination (°)	Azimuth (°)	Vertical Depth (ft)	+N/-S (ft)	+E/-W (ft)	Dogleg Rate (°/100usft)	Build Rate (°/100usft)	Turn Rate (°/100usft)	TFO (°)	Target
0.0	0.00	0.00	0.0	0.0	0.0	0.00	0.00	0.00	0.00	
600.0	0.00	0.00	600.0	0.0	0.0	0.00	0.00	0.00	0.00	
1,452.3	12.79	296.44	1,445.3	42.2	-84.8	1.50	1.50	0.00	296.44	
5,472.8	12.79	296.44	5,366.0	438.4	-881.4	0.00	0.00	0.00	0.00	
6,112.0	0.00	0.00	6,000.0	470.0	-945.0	2.00	-2.00	0.00	180.00	
7,979.8	0.00	0.00	7,867.8	470.0	-945.0	0.00	0.00	0.00	0.00	
9,106.0	90.09	180.81	8,584.0	-247.3	-955.1	8.00	8.00	0.00	180.81	
9,106.4	90.09	180.81	8,584.0	-247.7	-955.1	0.00	0.00	0.00	0.00	LPL 600'FNL & 2300'F
9,109.6	90.09	180.84	8,584.0	-250.9	-955.2	1.00	-0.11	0.99	96.46	
18,383.7	90.09	180.84	8,570.0	-9,524.0	-1,090.8	0.00	0.00	0.00	0.00	BHL 600'FSL & 2300'I

Database:	US_EDM	Local Co-ordinate Reference:	Well True Ranch Fee 503-2326H
Company:	Clear Creek Resource Partners	TVD Reference:	WELL @ 5881.0ft (Original Well Elev)
Project:	SEC.23-T15N-R65W	MD Reference:	WELL @ 5881.0ft (Original Well Elev)
Site:	True Ranch Fee 2326H East Pad Sec.23-T15N-R65W	North Reference:	True
Well:	True Ranch Fee 503-2326H	Survey Calculation Method:	Minimum Curvature
Wellbore:	Wellbore #1		
Design:	Plan #1 (1-29-18)		

Planned Survey									
Measured Depth (ft)	Inclination (°)	Azimuth (°)	Vertical Depth (ft)	+N/-S (ft)	+E/-W (ft)	Vertical Section (ft)	Dogleg Rate (°/100usft)	Build Rate (°/100usft)	Turn Rate (°/100usft)
0.0	0.00	0.00	0.0	0.0	0.0	0.0	0.00	0.00	0.00
1.0	0.00	0.00	1.0	0.0	0.0	0.0	0.00	0.00	0.00
SHL 400'FNL & 1350'FEL, Sec.23									
100.0	0.00	0.00	100.0	0.0	0.0	0.0	0.00	0.00	0.00
200.0	0.00	0.00	200.0	0.0	0.0	0.0	0.00	0.00	0.00
300.0	0.00	0.00	300.0	0.0	0.0	0.0	0.00	0.00	0.00
400.0	0.00	0.00	400.0	0.0	0.0	0.0	0.00	0.00	0.00
500.0	0.00	0.00	500.0	0.0	0.0	0.0	0.00	0.00	0.00
600.0	0.00	0.00	600.0	0.0	0.0	0.0	0.00	0.00	0.00
Start Build 1.50									
700.0	1.50	296.44	700.0	0.6	-1.2	-0.4	1.50	1.50	0.00
800.0	3.00	296.44	799.9	2.3	-4.7	-1.8	1.50	1.50	0.00
900.0	4.50	296.44	899.7	5.2	-10.5	-4.0	1.50	1.50	0.00
1,000.0	6.00	296.44	999.3	9.3	-18.7	-7.1	1.50	1.50	0.00
1,100.0	7.50	296.44	1,098.6	14.6	-29.3	-11.1	1.50	1.50	0.00
1,200.0	9.00	296.44	1,197.5	20.9	-42.1	-16.0	1.50	1.50	0.00
1,300.0	10.50	296.44	1,296.1	28.5	-57.3	-21.8	1.50	1.50	0.00
1,400.0	12.00	296.44	1,394.2	37.2	-74.7	-28.4	1.50	1.50	0.00
1,452.3	12.79	296.44	1,445.3	42.2	-84.8	-32.3	1.50	1.50	0.00
Start 4020.4 hold at 1452.3 MD									
1,500.0	12.79	296.44	1,491.8	46.9	-94.2	-35.8	0.00	0.00	0.00
1,600.0	12.79	296.44	1,589.3	56.7	-114.1	-43.4	0.00	0.00	0.00
1,700.0	12.79	296.44	1,686.8	66.6	-133.9	-50.9	0.00	0.00	0.00
1,800.0	12.79	296.44	1,784.3	76.4	-153.7	-58.5	0.00	0.00	0.00
1,900.0	12.79	296.44	1,881.8	86.3	-173.5	-66.0	0.00	0.00	0.00
2,000.0	12.79	296.44	1,979.4	96.1	-193.3	-73.5	0.00	0.00	0.00
2,100.0	12.79	296.44	2,076.9	106.0	-213.1	-81.1	0.00	0.00	0.00
2,200.0	12.79	296.44	2,174.4	115.9	-232.9	-88.6	0.00	0.00	0.00
2,300.0	12.79	296.44	2,271.9	125.7	-252.7	-96.1	0.00	0.00	0.00
2,400.0	12.79	296.44	2,369.4	135.6	-272.6	-103.7	0.00	0.00	0.00
2,500.0	12.79	296.44	2,467.0	145.4	-292.4	-111.2	0.00	0.00	0.00
2,600.0	12.79	296.44	2,564.5	155.3	-312.2	-118.7	0.00	0.00	0.00
2,700.0	12.79	296.44	2,662.0	165.1	-332.0	-126.3	0.00	0.00	0.00
2,800.0	12.79	296.44	2,759.5	175.0	-351.8	-133.8	0.00	0.00	0.00
2,900.0	12.79	296.44	2,857.1	184.8	-371.6	-141.3	0.00	0.00	0.00
3,000.0	12.79	296.44	2,954.6	194.7	-391.4	-148.9	0.00	0.00	0.00
3,100.0	12.79	296.44	3,052.1	204.5	-411.3	-156.4	0.00	0.00	0.00
3,200.0	12.79	296.44	3,149.6	214.4	-431.1	-164.0	0.00	0.00	0.00
3,300.0	12.79	296.44	3,247.1	224.3	-450.9	-171.5	0.00	0.00	0.00
3,400.0	12.79	296.44	3,344.7	234.1	-470.7	-179.0	0.00	0.00	0.00
3,500.0	12.79	296.44	3,442.2	244.0	-490.5	-186.6	0.00	0.00	0.00
3,600.0	12.79	296.44	3,539.7	253.8	-510.3	-194.1	0.00	0.00	0.00
3,700.0	12.79	296.44	3,637.2	263.7	-530.1	-201.6	0.00	0.00	0.00
3,800.0	12.79	296.44	3,734.7	273.5	-550.0	-209.2	0.00	0.00	0.00
3,900.0	12.79	296.44	3,832.3	283.4	-569.8	-216.7	0.00	0.00	0.00
4,000.0	12.79	296.44	3,929.8	293.2	-589.6	-224.2	0.00	0.00	0.00
4,100.0	12.79	296.44	4,027.3	303.1	-609.4	-231.8	0.00	0.00	0.00
4,200.0	12.79	296.44	4,124.8	312.9	-629.2	-239.3	0.00	0.00	0.00
4,300.0	12.79	296.44	4,222.3	322.8	-649.0	-246.9	0.00	0.00	0.00
4,400.0	12.79	296.44	4,319.9	332.7	-668.8	-254.4	0.00	0.00	0.00
4,500.0	12.79	296.44	4,417.4	342.5	-688.7	-261.9	0.00	0.00	0.00
4,600.0	12.79	296.44	4,514.9	352.4	-708.5	-269.5	0.00	0.00	0.00
4,700.0	12.79	296.44	4,612.4	362.2	-728.3	-277.0	0.00	0.00	0.00

Database:	US_EDM	Local Co-ordinate Reference:	Well True Ranch Fee 503-2326H
Company:	Clear Creek Resource Partners	TVD Reference:	WELL @ 5881.0ft (Original Well Elev)
Project:	SEC.23-T15N-R65W	MD Reference:	WELL @ 5881.0ft (Original Well Elev)
Site:	True Ranch Fee 2326H East Pad Sec.23-T15N-R65W	North Reference:	True
Well:	True Ranch Fee 503-2326H	Survey Calculation Method:	Minimum Curvature
Wellbore:	Wellbore #1		
Design:	Plan #1 (1-29-18)		

Planned Survey									
Measured Depth (ft)	Inclination (°)	Azimuth (°)	Vertical Depth (ft)	+N/-S (ft)	+E/-W (ft)	Vertical Section (ft)	Dogleg Rate (°/100usft)	Build Rate (°/100usft)	Turn Rate (°/100usft)
4,800.0	12.79	296.44	4,709.9	372.1	-748.1	-284.5	0.00	0.00	0.00
4,900.0	12.79	296.44	4,807.5	381.9	-767.9	-292.1	0.00	0.00	0.00
5,000.0	12.79	296.44	4,905.0	391.8	-787.7	-299.6	0.00	0.00	0.00
5,100.0	12.79	296.44	5,002.5	401.6	-807.5	-307.1	0.00	0.00	0.00
5,200.0	12.79	296.44	5,100.0	411.5	-827.4	-314.7	0.00	0.00	0.00
5,300.0	12.79	296.44	5,197.5	421.3	-847.2	-322.2	0.00	0.00	0.00
5,400.0	12.79	296.44	5,295.1	431.2	-867.0	-329.8	0.00	0.00	0.00
5,472.8	12.79	296.44	5,366.0	438.4	-881.4	-335.2	0.00	0.00	0.00
Start Drop -2.00									
5,500.0	12.24	296.44	5,392.6	441.0	-886.7	-337.2	2.00	-2.00	0.00
5,600.0	10.24	296.44	5,490.7	449.7	-904.1	-343.9	2.00	-2.00	0.00
5,700.0	8.24	296.44	5,589.4	456.8	-918.5	-349.4	2.00	-2.00	0.00
5,800.0	6.24	296.44	5,688.6	462.4	-929.8	-353.6	2.00	-2.00	0.00
5,900.0	4.24	296.44	5,788.2	466.5	-938.0	-356.8	2.00	-2.00	0.00
6,000.0	2.24	296.44	5,888.0	469.0	-943.0	-358.7	2.00	-2.00	0.00
6,100.0	0.24	296.44	5,988.0	470.0	-945.0	-359.4	2.00	-2.00	0.00
6,112.0	0.00	0.00	6,000.0	470.0	-945.0	-359.4	2.00	-2.00	0.00
Start 1867.8 hold at 6112.0 MD									
6,200.0	0.00	0.00	6,088.0	470.0	-945.0	-359.4	0.00	0.00	0.00
6,300.0	0.00	0.00	6,188.0	470.0	-945.0	-359.4	0.00	0.00	0.00
6,400.0	0.00	0.00	6,288.0	470.0	-945.0	-359.4	0.00	0.00	0.00
6,500.0	0.00	0.00	6,388.0	470.0	-945.0	-359.4	0.00	0.00	0.00
6,600.0	0.00	0.00	6,488.0	470.0	-945.0	-359.4	0.00	0.00	0.00
6,700.0	0.00	0.00	6,588.0	470.0	-945.0	-359.4	0.00	0.00	0.00
6,800.0	0.00	0.00	6,688.0	470.0	-945.0	-359.4	0.00	0.00	0.00
6,900.0	0.00	0.00	6,788.0	470.0	-945.0	-359.4	0.00	0.00	0.00
7,000.0	0.00	0.00	6,888.0	470.0	-945.0	-359.4	0.00	0.00	0.00
7,100.0	0.00	0.00	6,988.0	470.0	-945.0	-359.4	0.00	0.00	0.00
7,200.0	0.00	0.00	7,088.0	470.0	-945.0	-359.4	0.00	0.00	0.00
7,300.0	0.00	0.00	7,188.0	470.0	-945.0	-359.4	0.00	0.00	0.00
7,400.0	0.00	0.00	7,288.0	470.0	-945.0	-359.4	0.00	0.00	0.00
7,500.0	0.00	0.00	7,388.0	470.0	-945.0	-359.4	0.00	0.00	0.00
7,600.0	0.00	0.00	7,488.0	470.0	-945.0	-359.4	0.00	0.00	0.00
7,700.0	0.00	0.00	7,588.0	470.0	-945.0	-359.4	0.00	0.00	0.00
7,800.0	0.00	0.00	7,688.0	470.0	-945.0	-359.4	0.00	0.00	0.00
7,900.0	0.00	0.00	7,788.0	470.0	-945.0	-359.4	0.00	0.00	0.00
7,979.8	0.00	0.00	7,867.8	470.0	-945.0	-359.4	0.00	0.00	0.00
Start Build 8.00									
8,000.0	1.61	180.81	7,888.0	469.7	-945.0	-359.1	8.00	8.00	0.00
8,100.0	9.61	180.81	7,987.4	459.9	-945.1	-349.4	8.00	8.00	0.00
8,200.0	17.61	180.81	8,084.5	436.4	-945.5	-326.0	8.00	8.00	0.00
8,300.0	25.61	180.81	8,177.4	399.6	-946.0	-289.4	8.00	8.00	0.00
8,400.0	33.61	180.81	8,264.3	350.3	-946.7	-240.3	8.00	8.00	0.00
8,500.0	41.61	180.81	8,343.4	289.3	-947.5	-179.6	8.00	8.00	0.00
8,600.0	49.61	180.81	8,413.3	217.9	-948.6	-108.5	8.00	8.00	0.00
8,700.0	57.61	180.81	8,472.6	137.4	-949.7	-28.5	8.00	8.00	0.00
8,800.0	65.61	180.81	8,520.1	49.6	-950.9	59.0	8.00	8.00	0.00
8,900.0	73.61	180.81	8,554.9	-44.1	-952.2	152.2	8.00	8.00	0.00
9,000.0	81.61	180.81	8,576.3	-141.7	-953.6	249.3	8.00	8.00	0.00
9,100.0	89.61	180.81	8,584.0	-241.3	-955.0	348.4	8.00	8.00	0.00
9,106.0	90.09	180.81	8,584.0	-247.3	-955.1	354.3	8.00	8.00	0.00
9,106.4	90.09	180.81	8,584.0	-247.7	-955.1	354.8	0.00	0.00	0.00
Start DLS 1.00 TFO 96.46 - LPL 600°FNL& 2300°FEL, Sec.23									

Database:	US_EDM	Local Co-ordinate Reference:	Well True Ranch Fee 503-2326H
Company:	Clear Creek Resource Partners	TVD Reference:	WELL @ 5881.0ft (Original Well Elev)
Project:	SEC.23-T15N-R65W	MD Reference:	WELL @ 5881.0ft (Original Well Elev)
Site:	True Ranch Fee 2326H East Pad Sec.23-T15N-R65W	North Reference:	True
Well:	True Ranch Fee 503-2326H	Survey Calculation Method:	Minimum Curvature
Wellbore:	Wellbore #1		
Design:	Plan #1 (1-29-18)		

Planned Survey

Measured Depth (ft)	Inclination (°)	Azimuth (°)	Vertical Depth (ft)	+N/-S (ft)	+E/-W (ft)	Vertical Section (ft)	Dogleg Rate (°/100usft)	Build Rate (°/100usft)	Turn Rate (°/100usft)
9,109.6	90.09	180.84	8,584.0	-250.9	-955.2	357.9	1.00	-0.11	0.99
Start 9274.2 hold at 9109.6 MD									
9,200.0	90.09	180.84	8,583.9	-341.3	-956.5	447.9	0.00	0.00	0.00
9,300.0	90.09	180.84	8,583.7	-441.3	-957.9	547.4	0.00	0.00	0.00
9,400.0	90.09	180.84	8,583.6	-541.3	-959.4	646.9	0.00	0.00	0.00
9,500.0	90.09	180.84	8,583.4	-641.3	-960.9	746.4	0.00	0.00	0.00
9,600.0	90.09	180.84	8,583.3	-741.2	-962.3	845.9	0.00	0.00	0.00
9,700.0	90.09	180.84	8,583.1	-841.2	-963.8	945.4	0.00	0.00	0.00
9,800.0	90.09	180.84	8,583.0	-941.2	-965.2	1,044.9	0.00	0.00	0.00
9,900.0	90.09	180.84	8,582.8	-1,041.2	-966.7	1,144.4	0.00	0.00	0.00
10,000.0	90.09	180.84	8,582.7	-1,141.2	-968.2	1,243.9	0.00	0.00	0.00
10,100.0	90.09	180.84	8,582.5	-1,241.2	-969.6	1,343.5	0.00	0.00	0.00
10,200.0	90.09	180.84	8,582.3	-1,341.2	-971.1	1,443.0	0.00	0.00	0.00
10,300.0	90.09	180.84	8,582.2	-1,441.2	-972.6	1,542.5	0.00	0.00	0.00
10,400.0	90.09	180.84	8,582.0	-1,541.2	-974.0	1,642.0	0.00	0.00	0.00
10,500.0	90.09	180.84	8,581.9	-1,641.1	-975.5	1,741.5	0.00	0.00	0.00
10,600.0	90.09	180.84	8,581.7	-1,741.1	-976.9	1,841.0	0.00	0.00	0.00
10,700.0	90.09	180.84	8,581.6	-1,841.1	-978.4	1,940.5	0.00	0.00	0.00
10,800.0	90.09	180.84	8,581.4	-1,941.1	-979.9	2,040.0	0.00	0.00	0.00
10,900.0	90.09	180.84	8,581.3	-2,041.1	-981.3	2,139.5	0.00	0.00	0.00
11,000.0	90.09	180.84	8,581.1	-2,141.1	-982.8	2,239.0	0.00	0.00	0.00
11,100.0	90.09	180.84	8,581.0	-2,241.1	-984.3	2,338.5	0.00	0.00	0.00
11,200.0	90.09	180.84	8,580.8	-2,341.1	-985.7	2,438.0	0.00	0.00	0.00
11,300.0	90.09	180.84	8,580.7	-2,441.1	-987.2	2,537.5	0.00	0.00	0.00
11,400.0	90.09	180.84	8,580.5	-2,541.0	-988.6	2,637.0	0.00	0.00	0.00
11,500.0	90.09	180.84	8,580.4	-2,641.0	-990.1	2,736.5	0.00	0.00	0.00
11,600.0	90.09	180.84	8,580.2	-2,741.0	-991.6	2,836.0	0.00	0.00	0.00
11,700.0	90.09	180.84	8,580.1	-2,841.0	-993.0	2,935.6	0.00	0.00	0.00
11,800.0	90.09	180.84	8,579.9	-2,941.0	-994.5	3,035.1	0.00	0.00	0.00
11,900.0	90.09	180.84	8,579.8	-3,041.0	-996.0	3,134.6	0.00	0.00	0.00
12,000.0	90.09	180.84	8,579.6	-3,141.0	-997.4	3,234.1	0.00	0.00	0.00
12,100.0	90.09	180.84	8,579.5	-3,241.0	-998.9	3,333.6	0.00	0.00	0.00
12,200.0	90.09	180.84	8,579.3	-3,341.0	-1,000.3	3,433.1	0.00	0.00	0.00
12,300.0	90.09	180.84	8,579.2	-3,441.0	-1,001.8	3,532.6	0.00	0.00	0.00
12,400.0	90.09	180.84	8,579.0	-3,540.9	-1,003.3	3,632.1	0.00	0.00	0.00
12,500.0	90.09	180.84	8,578.9	-3,640.9	-1,004.7	3,731.6	0.00	0.00	0.00
12,600.0	90.09	180.84	8,578.7	-3,740.9	-1,006.2	3,831.1	0.00	0.00	0.00
12,700.0	90.09	180.84	8,578.6	-3,840.9	-1,007.7	3,930.6	0.00	0.00	0.00
12,800.0	90.09	180.84	8,578.4	-3,940.9	-1,009.1	4,030.1	0.00	0.00	0.00
12,900.0	90.09	180.84	8,578.3	-4,040.9	-1,010.6	4,129.6	0.00	0.00	0.00
13,000.0	90.09	180.84	8,578.1	-4,140.9	-1,012.0	4,229.1	0.00	0.00	0.00
13,100.0	90.09	180.84	8,578.0	-4,240.9	-1,013.5	4,328.6	0.00	0.00	0.00
13,200.0	90.09	180.84	8,577.8	-4,340.9	-1,015.0	4,428.1	0.00	0.00	0.00
13,300.0	90.09	180.84	8,577.7	-4,440.8	-1,016.4	4,527.7	0.00	0.00	0.00
13,400.0	90.09	180.84	8,577.5	-4,540.8	-1,017.9	4,627.2	0.00	0.00	0.00
13,500.0	90.09	180.84	8,577.4	-4,640.8	-1,019.4	4,726.7	0.00	0.00	0.00
13,600.0	90.09	180.84	8,577.2	-4,740.8	-1,020.8	4,826.2	0.00	0.00	0.00
13,700.0	90.09	180.84	8,577.1	-4,840.8	-1,022.3	4,925.7	0.00	0.00	0.00
13,800.0	90.09	180.84	8,576.9	-4,940.8	-1,023.7	5,025.2	0.00	0.00	0.00
13,900.0	90.09	180.84	8,576.8	-5,040.8	-1,025.2	5,124.7	0.00	0.00	0.00
14,000.0	90.09	180.84	8,576.6	-5,140.8	-1,026.7	5,224.2	0.00	0.00	0.00
14,100.0	90.09	180.84	8,576.5	-5,240.8	-1,028.1	5,323.7	0.00	0.00	0.00

Database:	US_EDM	Local Co-ordinate Reference:	Well True Ranch Fee 503-2326H
Company:	Clear Creek Resource Partners	TVD Reference:	WELL @ 5881.0ft (Original Well Elev)
Project:	SEC.23-T15N-R65W	MD Reference:	WELL @ 5881.0ft (Original Well Elev)
Site:	True Ranch Fee 2326H East Pad Sec.23-T15N-R65W	North Reference:	True
Well:	True Ranch Fee 503-2326H	Survey Calculation Method:	Minimum Curvature
Wellbore:	Wellbore #1		
Design:	Plan #1 (1-29-18)		

Planned Survey									
Measured Depth (ft)	Inclination (°)	Azimuth (°)	Vertical Depth (ft)	+N/-S (ft)	+E/-W (ft)	Vertical Section (ft)	Dogleg Rate (°/100usft)	Build Rate (°/100usft)	Turn Rate (°/100usft)
14,200.0	90.09	180.84	8,576.3	-5,340.7	-1,029.6	5,423.2	0.00	0.00	0.00
14,300.0	90.09	180.84	8,576.2	-5,440.7	-1,031.1	5,522.7	0.00	0.00	0.00
14,400.0	90.09	180.84	8,576.0	-5,540.7	-1,032.5	5,622.2	0.00	0.00	0.00
14,500.0	90.09	180.84	8,575.9	-5,640.7	-1,034.0	5,721.7	0.00	0.00	0.00
14,600.0	90.09	180.84	8,575.7	-5,740.7	-1,035.4	5,821.2	0.00	0.00	0.00
14,700.0	90.09	180.84	8,575.6	-5,840.7	-1,036.9	5,920.7	0.00	0.00	0.00
14,800.0	90.09	180.84	8,575.4	-5,940.7	-1,038.4	6,020.2	0.00	0.00	0.00
14,900.0	90.09	180.84	8,575.3	-6,040.7	-1,039.8	6,119.8	0.00	0.00	0.00
15,000.0	90.09	180.84	8,575.1	-6,140.7	-1,041.3	6,219.3	0.00	0.00	0.00
15,100.0	90.09	180.84	8,575.0	-6,240.6	-1,042.8	6,318.8	0.00	0.00	0.00
15,200.0	90.09	180.84	8,574.8	-6,340.6	-1,044.2	6,418.3	0.00	0.00	0.00
15,300.0	90.09	180.84	8,574.7	-6,440.6	-1,045.7	6,517.8	0.00	0.00	0.00
15,400.0	90.09	180.84	8,574.5	-6,540.6	-1,047.1	6,617.3	0.00	0.00	0.00
15,500.0	90.09	180.84	8,574.4	-6,640.6	-1,048.6	6,716.8	0.00	0.00	0.00
15,600.0	90.09	180.84	8,574.2	-6,740.6	-1,050.1	6,816.3	0.00	0.00	0.00
15,700.0	90.09	180.84	8,574.0	-6,840.6	-1,051.5	6,915.8	0.00	0.00	0.00
15,800.0	90.09	180.84	8,573.9	-6,940.6	-1,053.0	7,015.3	0.00	0.00	0.00
15,900.0	90.09	180.84	8,573.7	-7,040.6	-1,054.5	7,114.8	0.00	0.00	0.00
16,000.0	90.09	180.84	8,573.6	-7,140.6	-1,055.9	7,214.3	0.00	0.00	0.00
16,100.0	90.09	180.84	8,573.4	-7,240.5	-1,057.4	7,313.8	0.00	0.00	0.00
16,200.0	90.09	180.84	8,573.3	-7,340.5	-1,058.8	7,413.3	0.00	0.00	0.00
16,300.0	90.09	180.84	8,573.1	-7,440.5	-1,060.3	7,512.8	0.00	0.00	0.00
16,400.0	90.09	180.84	8,573.0	-7,540.5	-1,061.8	7,612.3	0.00	0.00	0.00
16,500.0	90.09	180.84	8,572.8	-7,640.5	-1,063.2	7,711.9	0.00	0.00	0.00
16,600.0	90.09	180.84	8,572.7	-7,740.5	-1,064.7	7,811.4	0.00	0.00	0.00
16,700.0	90.09	180.84	8,572.5	-7,840.5	-1,066.2	7,910.9	0.00	0.00	0.00
16,800.0	90.09	180.84	8,572.4	-7,940.5	-1,067.6	8,010.4	0.00	0.00	0.00
16,900.0	90.09	180.84	8,572.2	-8,040.5	-1,069.1	8,109.9	0.00	0.00	0.00
17,000.0	90.09	180.84	8,572.1	-8,140.4	-1,070.5	8,209.4	0.00	0.00	0.00
17,100.0	90.09	180.84	8,571.9	-8,240.4	-1,072.0	8,308.9	0.00	0.00	0.00
17,200.0	90.09	180.84	8,571.8	-8,340.4	-1,073.5	8,408.4	0.00	0.00	0.00
17,300.0	90.09	180.84	8,571.6	-8,440.4	-1,074.9	8,507.9	0.00	0.00	0.00
17,400.0	90.09	180.84	8,571.5	-8,540.4	-1,076.4	8,607.4	0.00	0.00	0.00
17,500.0	90.09	180.84	8,571.3	-8,640.4	-1,077.9	8,706.9	0.00	0.00	0.00
17,600.0	90.09	180.84	8,571.2	-8,740.4	-1,079.3	8,806.4	0.00	0.00	0.00
17,700.0	90.09	180.84	8,571.0	-8,840.4	-1,080.8	8,905.9	0.00	0.00	0.00
17,800.0	90.09	180.84	8,570.9	-8,940.4	-1,082.2	9,005.4	0.00	0.00	0.00
17,900.0	90.09	180.84	8,570.7	-9,040.3	-1,083.7	9,104.9	0.00	0.00	0.00
18,000.0	90.09	180.84	8,570.6	-9,140.3	-1,085.2	9,204.4	0.00	0.00	0.00
18,100.0	90.09	180.84	8,570.4	-9,240.3	-1,086.6	9,304.0	0.00	0.00	0.00
18,200.0	90.09	180.84	8,570.3	-9,340.3	-1,088.1	9,403.5	0.00	0.00	0.00
18,300.0	90.09	180.84	8,570.1	-9,440.3	-1,089.6	9,503.0	0.00	0.00	0.00
18,383.7	90.09	180.84	8,570.0	-9,524.0	-1,090.8	9,586.3	0.00	0.00	0.00
TD at 18383.7 - BHL 600°FSL & 2300°FEL, Sec.26									

Database:	US_EDM	Local Co-ordinate Reference:	Well True Ranch Fee 503-2326H
Company:	Clear Creek Resource Partners	TVD Reference:	WELL @ 5881.0ft (Original Well Elev)
Project:	SEC.23-T15N-R65W	MD Reference:	WELL @ 5881.0ft (Original Well Elev)
Site:	True Ranch Fee 2326H East Pad Sec.23-T15N-R65W	North Reference:	True
Well:	True Ranch Fee 503-2326H	Survey Calculation Method:	Minimum Curvature
Wellbore:	Wellbore #1		
Design:	Plan #1 (1-29-18)		

Design Targets									
Target Name - hit/miss target - Shape	Dip Angle (°)	Dip Dir. (°)	TVD (ft)	+N/-S (ft)	+E/-W (ft)	Northing (usft)	Easting (usft)	Latitude	Longitude
SHL 400'FNL & 1350'FE - plan hits target center - Point	0.00	0.00	1.0	0.0	0.0	1,607,878.57	3,241,910.20	40.998700	-104.623660
BHL 600'FSL & 2300'FE - plan hits target center - Point	0.00	0.00	8,570.0	-9,524.0	-1,090.8	1,598,343.84	3,240,913.56	40.972560	-104.627610
LPL 600'FNL & 2300'FEL - plan hits target center - Point	0.00	0.00	8,584.0	-247.7	-955.1	1,607,621.39	3,240,957.56	40.998020	-104.627120

Plan Annotations				
Measured Depth (ft)	Vertical Depth (ft)	Local Coordinates		Comment
		+N/-S (ft)	+E/-W (ft)	
600.0	600.0	0.0	0.0	Start Build 1.50
1,452.3	1,445.3	42.2	-84.8	Start 4020.4 hold at 1452.3 MD
5,472.8	5,366.0	438.4	-881.4	Start Drop -2.00
6,112.0	6,000.0	470.0	-945.0	Start 1867.8 hold at 6112.0 MD
7,979.8	7,867.8	470.0	-945.0	Start Build 8.00
9,106.4	8,584.0	-247.7	-955.1	Start DLS 1.00 TFO 96.46
9,109.6	8,584.0	-250.9	-955.2	Start 9274.2 hold at 9109.6 MD
18,383.7	8,570.0	-9,524.0	-1,090.8	TD at 18383.7



Clear Creek Resource Partners

SEC.23-T15N-R65W

True Ranch Fee 2326H East Pad Sec.23-T15N-R65W

True Ranch Fee 503-2326H

Wellbore #1

Plan #1 (1-29-18)

Anticollision Report

02 February, 2018

Company:	Clear Creek Resource Partners	Local Co-ordinate Reference:	Well True Ranch Fee 503-2326H
Project:	SEC.23-T15N-R65W	TVD Reference:	WELL @ 5881.0ft (Original Well Elev)
Reference Site:	True Ranch Fee 2326H East Pad Sec.23-T15N-R65W	MD Reference:	WELL @ 5881.0ft (Original Well Elev)
Site Error:	0.0 ft	North Reference:	True
Reference Well:	True Ranch Fee 503-2326H	Survey Calculation Method:	Minimum Curvature
Well Error:	0.0 ft	Output errors are at	2.00 sigma
Reference Wellbore	Wellbore #1	Database:	US_EDM
Reference Design:	Plan #1 (1-29-18)	Offset TVD Reference:	Offset Datum

Reference	Plan #1 (1-29-18)		
Filter type:	NO GLOBAL FILTER: Using user defined selection & filtering criteria		
Interpolation Method:	MD Interval 50.0ft	Error Model:	ISCWSA
Depth Range:	Unlimited	Scan Method:	Closest Approach 3D
Results Limited by:	Maximum center-center distance of 400.0 ft	Error Surface:	Elliptical Conic
Warning Levels Evaluated at:	2.00 Sigma	Casing Method:	Not applied

Survey Tool Program		Date	2/2/2018		
From (ft)	To (ft)	Survey (Wellbore)	Tool Name	Description	
0.0	18,383.7	Plan #1 (1-29-18) (Wellbore #1)	MWD	MWD - Standard	

Summary						
Site Name	Reference Measured Depth (ft)	Offset Measured Depth (ft)	Distance Between Centres (ft)	Distance Between Ellipses (ft)	Separation Factor	Warning
Offset Well - Wellbore - Design						
True Ranch Fee 2326H East Pad Sec.23-T15N-R65W						
True Ranch Fee 201-2326H - Wellbore #1 - Plan #1 (1-2	600.0	589.0	152.0	149.5	62.098	CC, ES
True Ranch Fee 201-2326H - Wellbore #1 - Plan #1 (1-2	1,200.0	1,180.1	197.5	192.3	38.479	SF
True Ranch Fee 202-2326H - Wellbore #1 - Plan #1 (1-2	600.0	593.0	91.2	88.7	37.109	CC, ES
True Ranch Fee 202-2326H - Wellbore #1 - Plan #1 (1-2	1,100.0	1,091.6	120.8	116.1	25.711	SF
True Ranch Fee 203-2326H - Wellbore #1 - Plan #1 (1-2	600.0	599.0	30.4	27.9	12.292	CC, ES
True Ranch Fee 203-2326H - Wellbore #1 - Plan #1 (1-2	18,384.3	18,144.5	396.0	69.6	1.213	Level 2, SF
True Ranch Fee 204-2326H - Wellbore #1 - Plan #1 (1-2	383.0	384.0	30.4	28.9	20.254	CC
True Ranch Fee 204-2326H - Wellbore #1 - Plan #1 (1-2	400.0	401.0	30.4	28.8	19.273	ES
True Ranch Fee 204-2326H - Wellbore #1 - Plan #1 (1-2	18,384.3	18,234.3	372.5	42.0	1.127	Level 2, SF
True Ranch Fee 501-2326H - Wellbore #1 - Plan #1 (1-2	600.0	591.0	121.7	119.2	49.619	CC, ES
True Ranch Fee 501-2326H - Wellbore #1 - Plan #1 (1-2	1,200.0	1,188.5	164.1	159.0	31.848	SF
True Ranch Fee 502-2326H - Wellbore #1 - Plan #1 (1-2	600.0	596.0	60.8	58.4	24.696	CC, ES
True Ranch Fee 502-2326H - Wellbore #1 - Plan #1 (1-2	3,850.0	3,838.9	397.3	374.3	17.308	SF

Offset Design		True Ranch Fee 2326H East Pad Sec.23-T15N-R65W - True Ranch Fee 201-2326H - Wellbore #1 - Pla											Offset Site Error:		0.0 ft
Survey Program:		0-MWD											Offset Well Error:		0.0 ft
Reference		Offset		Semi Major Axis			Distance							Warning	
Measured Depth	Vertical Depth	Measured Depth	Vertical Depth	Reference	Offset	Highside Toolface	Offset Wellbore Centre		Between Centres	Between Ellipses	Minimum Separation	Separation Factor			
Depth (ft)	Depth (ft)	Depth (ft)	Depth (ft)	(ft)	(ft)	(°)	+N/-S (ft)	+E/-W (ft)	(ft)	(ft)	(ft)				
0.0	0.0	0.0	0.0	0.0	0.0	87.25	7.3	151.8	152.4						
50.0	50.0	39.0	39.0	0.1	0.0	87.25	7.3	151.8	152.0	151.9	0.10	1,517.796			
100.0	100.0	89.0	89.0	0.1	0.1	87.25	7.3	151.8	152.0	151.8	0.21	715.527			
150.0	150.0	139.0	139.0	0.2	0.2	87.25	7.3	151.8	152.0	151.6	0.42	357.801			
200.0	200.0	189.0	189.0	0.3	0.3	87.25	7.3	151.8	152.0	151.3	0.65	233.994			
250.0	250.0	239.0	239.0	0.4	0.4	87.25	7.3	151.8	152.0	151.1	0.87	173.841			
300.0	300.0	289.0	289.0	0.6	0.5	87.25	7.3	151.8	152.0	150.9	1.10	138.291			
350.0	350.0	339.0	339.0	0.7	0.6	87.25	7.3	151.8	152.0	150.7	1.32	114.812			
400.0	400.0	389.0	389.0	0.8	0.8	87.25	7.3	151.8	152.0	150.4	1.55	98.148			
450.0	450.0	439.0	439.0	0.9	0.9	87.25	7.3	151.8	152.0	150.2	1.77	85.709			
500.0	500.0	489.0	489.0	1.0	1.0	87.25	7.3	151.8	152.0	150.0	2.00	76.068			
550.0	550.0	539.0	539.0	1.1	1.1	87.25	7.3	151.8	152.0	149.8	2.22	68.376			
600.0	600.0	589.0	589.0	1.2	1.2	87.25	7.3	151.8	152.0	149.5	2.45	62.098	CC, ES		
650.0	650.0	639.0	639.0	1.3	1.3	150.87	7.3	151.8	152.3	149.6	2.67	57.041			

CC - Min centre to center distance or convergent point, SF - min separation factor, ES - min ellipse separation

Company:	Clear Creek Resource Partners	Local Co-ordinate Reference:	Well True Ranch Fee 503-2326H
Project:	SEC.23-T15N-R65W	TVD Reference:	WELL @ 5881.0ft (Original Well Elev)
Reference Site:	True Ranch Fee 2326H East Pad Sec.23-T15N-R65W	MD Reference:	WELL @ 5881.0ft (Original Well Elev)
Site Error:	0.0 ft	North Reference:	True
Reference Well:	True Ranch Fee 503-2326H	Survey Calculation Method:	Minimum Curvature
Well Error:	0.0 ft	Output errors are at	2.00 sigma
Reference Wellbore	Wellbore #1	Database:	US_EDM
Reference Design:	Plan #1 (1-29-18)	Offset TVD Reference:	Offset Datum

Offset Design		True Ranch Fee 2326H East Pad Sec.23-T15N-R65W - True Ranch Fee 201-2326H - Wellbore #1 - Pla											Offset Site Error: 0.0 ft	
Survey Program: 0-MWD													Offset Well Error: 0.0 ft	
Reference		Offset		Semi Major Axis			Distance						Warning	
Measured Depth (ft)	Vertical Depth (ft)	Measured Depth (ft)	Vertical Depth (ft)	Reference (ft)	Offset (ft)	Highside Toolface (°)	Offset Wellbore Centre +N/-S (ft)	+E/-W (ft)	Between Centres (ft)	Between Ellipses (ft)	Minimum Separation (ft)	Separation Factor		
700.0	700.0	689.0	689.0	1.5	1.4	151.04	7.3	151.8	153.1	150.2	2.89	52.943		
750.0	750.0	739.0	739.0	1.6	1.5	151.32	7.3	151.8	154.6	151.5	3.11	49.630		
800.0	799.9	788.9	788.9	1.7	1.7	151.71	7.3	151.8	156.6	153.3	3.34	46.935		
850.0	849.8	838.8	838.8	1.8	1.8	152.19	7.3	151.8	159.2	155.6	3.56	44.706		
900.0	899.7	888.7	888.7	1.9	1.9	152.76	7.3	151.8	162.4	158.6	3.78	42.904		
950.0	949.5	938.5	938.5	2.0	2.0	153.41	7.3	151.8	166.2	162.2	4.01	41.425		
1,000.0	999.3	988.3	988.3	2.1	2.1	154.12	7.3	151.8	170.6	166.3	4.24	40.257		
1,050.0	1,049.0	1,036.7	1,036.7	2.3	2.2	154.81	7.4	152.0	175.7	171.3	4.46	39.388		
1,100.0	1,098.6	1,084.7	1,084.7	2.4	2.3	155.41	7.9	152.5	181.9	177.2	4.68	38.842		
1,150.0	1,148.1	1,132.5	1,132.5	2.6	2.4	155.91	8.8	153.5	189.2	184.3	4.91	38.538		
1,200.0	1,197.5	1,180.1	1,180.0	2.7	2.5	156.31	10.1	155.0	197.5	192.3	5.13	38.479 SF		
1,250.0	1,246.9	1,227.4	1,227.3	2.9	2.6	156.63	11.8	156.8	206.8	201.4	5.36	38.585		
1,300.0	1,296.1	1,274.5	1,274.3	3.0	2.7	156.86	13.9	159.1	217.2	211.6	5.59	38.878		
1,350.0	1,345.2	1,321.3	1,320.9	3.2	2.8	157.01	16.4	161.8	228.5	222.7	5.82	39.285		
1,400.0	1,394.2	1,367.8	1,367.2	3.4	3.0	157.09	19.2	164.9	240.9	234.8	6.05	39.835		
1,450.0	1,443.0	1,413.9	1,413.1	3.6	3.1	157.11	22.3	168.4	254.2	247.9	6.28	40.475		
1,500.0	1,491.8	1,459.7	1,458.6	3.8	3.2	157.14	25.9	172.3	268.3	261.7	6.52	41.165		
1,550.0	1,540.5	1,505.3	1,503.8	4.0	3.3	157.09	29.7	176.5	282.7	276.0	6.76	41.826		
1,600.0	1,589.3	1,550.7	1,548.8	4.2	3.4	156.96	33.9	181.2	297.6	290.6	7.00	42.507		
1,650.0	1,638.0	1,595.8	1,593.4	4.4	3.5	156.77	38.5	186.2	312.8	305.6	7.24	43.185		
1,700.0	1,686.8	1,640.7	1,637.7	4.6	3.7	156.53	43.3	191.5	328.4	320.9	7.50	43.791		
1,750.0	1,735.6	1,685.3	1,681.6	4.9	3.8	156.25	48.5	197.2	344.5	336.7	7.76	44.415		
1,800.0	1,784.3	1,729.6	1,725.1	5.1	3.9	155.93	54.0	203.3	360.9	352.9	8.02	45.015		
1,850.0	1,833.1	1,773.6	1,768.3	5.3	4.1	155.57	59.8	209.6	377.7	369.4	8.28	45.604		
1,900.0	1,881.8	1,817.5	1,811.3	5.5	4.2	155.20	65.9	216.4	394.9	386.3	8.55	46.168		

Company:	Clear Creek Resource Partners	Local Co-ordinate Reference:	Well True Ranch Fee 503-2326H
Project:	SEC.23-T15N-R65W	TVD Reference:	WELL @ 5881.0ft (Original Well Elev)
Reference Site:	True Ranch Fee 2326H East Pad Sec.23-T15N-R65W	MD Reference:	WELL @ 5881.0ft (Original Well Elev)
Site Error:	0.0 ft	North Reference:	True
Reference Well:	True Ranch Fee 503-2326H	Survey Calculation Method:	Minimum Curvature
Well Error:	0.0 ft	Output errors are at	2.00 sigma
Reference Wellbore	Wellbore #1	Database:	US_EDM
Reference Design:	Plan #1 (1-29-18)	Offset TVD Reference:	Offset Datum

Offset Design True Ranch Fee 2326H East Pad Sec.23-T15N-R65W - True Ranch Fee 202-2326H - Wellbore #1 - Pla													Offset Site Error:	0.0 ft
Survey Program: 0-MWD													Offset Well Error:	0.0 ft
Measured Depth (ft)	Vertical Depth (ft)	Measured Depth (ft)	Vertical Depth (ft)	Reference (ft)	Offset (ft)	Highside Toolface (°)	Offset Wellbore Centre +N/-S (ft)	+E/-W (ft)	Distance Between Centres (ft)	Between Ellipses (ft)	Minimum Separation (ft)	Separation Factor	Warning	
0.0	0.0	0.0	0.0	0.0	0.0	87.71	3.6	91.1	91.4					
50.0	50.0	43.0	43.0	0.1	0.0	87.71	3.6	91.1	91.2	91.1	0.10	871.315		
100.0	100.0	93.0	93.0	0.1	0.1	87.71	3.6	91.1	91.2	90.9	0.22	420.287		
150.0	150.0	143.0	143.0	0.2	0.2	87.71	3.6	91.1	91.2	90.7	0.43	210.157		
200.0	200.0	193.0	193.0	0.3	0.3	87.71	3.6	91.1	91.2	90.5	0.66	138.431		
250.0	250.0	243.0	243.0	0.4	0.4	87.71	3.6	91.1	91.2	90.3	0.88	103.207		
300.0	300.0	293.0	293.0	0.6	0.5	87.71	3.6	91.1	91.2	90.1	1.11	82.272		
350.0	350.0	343.0	343.0	0.7	0.7	87.71	3.6	91.1	91.2	89.8	1.33	68.399		
400.0	400.0	393.0	393.0	0.8	0.8	87.71	3.6	91.1	91.2	89.6	1.56	58.529		
450.0	450.0	443.0	443.0	0.9	0.9	87.71	3.6	91.1	91.2	89.4	1.78	51.148		
500.0	500.0	493.0	493.0	1.0	1.0	87.71	3.6	91.1	91.2	89.2	2.01	45.420		
550.0	550.0	543.0	543.0	1.1	1.1	87.71	3.6	91.1	91.2	88.9	2.23	40.846		
600.0	600.0	593.0	593.0	1.2	1.2	87.71	3.6	91.1	91.2	88.7	2.46	37.109 CC, ES		
650.0	650.0	643.0	643.0	1.3	1.3	151.36	3.6	91.1	91.5	88.8	2.68	34.141		
700.0	700.0	693.0	693.0	1.5	1.4	151.65	3.6	91.1	92.3	89.4	2.90	31.816		
750.0	750.0	743.0	743.0	1.6	1.6	152.11	3.6	91.1	93.8	90.6	3.12	30.016		
800.0	799.9	792.9	792.9	1.7	1.7	152.74	3.6	91.1	95.8	92.4	3.35	28.634		
850.0	849.8	842.8	842.8	1.8	1.8	153.51	3.6	91.1	98.4	94.8	3.57	27.568		
900.0	899.7	892.7	892.7	1.9	1.9	154.39	3.6	91.1	101.6	97.9	3.79	26.793		
950.0	949.5	942.5	942.5	2.0	2.0	155.36	3.6	91.1	105.5	101.5	4.02	26.241		
1,000.0	999.3	992.3	992.3	2.1	2.1	156.40	3.6	91.1	110.0	105.7	4.25	25.902		
1,050.0	1,049.0	1,042.0	1,042.0	2.3	2.2	157.47	3.6	91.1	115.1	110.6	4.47	25.724		
1,100.0	1,098.6	1,091.6	1,091.6	2.4	2.3	158.57	3.6	91.1	120.8	116.1	4.70	25.711 SF		
1,150.0	1,148.1	1,141.1	1,141.1	2.6	2.5	159.66	3.6	91.1	127.3	122.3	4.93	25.817		
1,200.0	1,197.5	1,190.5	1,190.5	2.7	2.6	160.74	3.6	91.1	134.3	129.2	5.16	26.052		
1,250.0	1,246.9	1,239.9	1,239.9	2.9	2.7	161.78	3.6	91.1	142.0	136.7	5.39	26.377		
1,300.0	1,296.1	1,289.1	1,289.1	3.0	2.8	162.79	3.6	91.1	150.4	144.8	5.61	26.807		
1,350.0	1,345.2	1,338.2	1,338.2	3.2	2.9	163.75	3.6	91.1	159.5	153.6	5.84	27.302		
1,400.0	1,394.2	1,387.2	1,387.2	3.4	3.0	164.67	3.6	91.1	169.2	163.1	6.07	27.886		
1,450.0	1,443.0	1,436.0	1,436.0	3.6	3.1	165.53	3.6	91.1	179.6	173.3	6.29	28.526		
1,500.0	1,491.8	1,484.8	1,484.8	3.8	3.2	166.36	3.6	91.1	190.3	183.8	6.52	29.178		
1,550.0	1,540.5	1,533.5	1,533.5	4.0	3.3	167.10	3.6	91.1	201.1	194.3	6.75	29.770		
1,600.0	1,589.3	1,582.3	1,582.3	4.2	3.4	167.77	3.6	91.1	211.9	204.9	6.98	30.356		
1,650.0	1,638.0	1,631.0	1,631.0	4.4	3.6	168.37	3.6	91.1	222.7	215.5	7.21	30.904		
1,700.0	1,686.8	1,679.8	1,679.8	4.6	3.7	168.92	3.6	91.1	233.6	226.2	7.44	31.388		
1,750.0	1,735.6	1,728.6	1,728.6	4.9	3.8	169.42	3.6	91.1	244.5	236.8	7.67	31.857		
1,800.0	1,784.3	1,777.3	1,777.3	5.1	3.9	169.87	3.6	91.1	255.4	247.5	7.91	32.298		
1,850.0	1,833.1	1,826.1	1,826.1	5.3	4.0	170.29	3.6	91.1	266.3	258.1	8.14	32.712		
1,900.0	1,881.8	1,874.8	1,874.8	5.5	4.1	170.68	3.6	91.1	277.2	268.8	8.37	33.103		
1,950.0	1,930.6	1,923.6	1,923.6	5.8	4.2	171.03	3.6	91.1	288.1	279.5	8.61	33.472		
2,000.0	1,979.4	1,972.4	1,972.4	6.0	4.3	171.36	3.6	91.1	299.1	290.2	8.84	33.821		
2,050.0	2,028.1	2,021.7	2,021.7	6.2	4.4	171.66	3.7	91.1	310.0	300.9	9.08	34.144		
2,100.0	2,076.9	2,070.2	2,070.2	6.5	4.5	171.85	4.3	91.1	320.7	311.4	9.32	34.424		
2,150.0	2,125.6	2,122.3	2,122.3	6.7	4.7	171.92	5.6	91.0	331.3	321.7	9.56	34.663		
2,200.0	2,174.4	2,172.8	2,172.7	6.9	4.8	171.87	7.5	91.0	341.6	331.8	9.80	34.864		
2,250.0	2,223.2	2,223.3	2,223.2	7.2	4.9	171.73	10.2	90.9	351.7	341.6	10.04	35.026		
2,300.0	2,271.9	2,273.9	2,273.7	7.4	5.0	171.49	13.5	90.8	361.6	351.3	10.29	35.153		
2,350.0	2,320.7	2,324.5	2,324.1	7.6	5.1	171.16	17.4	90.7	371.2	360.7	10.53	35.245		
2,400.0	2,369.4	2,375.2	2,374.6	7.9	5.2	170.75	22.0	90.6	380.7	369.9	10.78	35.305		
2,450.0	2,418.2	2,425.9	2,425.0	8.1	5.3	170.27	27.4	90.5	390.0	378.9	11.04	35.331		
2,500.0	2,467.0	2,476.6	2,475.3	8.3	5.5	169.72	33.3	90.3	399.0	387.7	11.30	35.328		

CC - Min centre to center distance or convergent point, SF - min separation factor, ES - min ellipse separation

Company:	Clear Creek Resource Partners	Local Co-ordinate Reference:	Well True Ranch Fee 503-2326H
Project:	SEC.23-T15N-R65W	TVD Reference:	WELL @ 5881.0ft (Original Well Elev)
Reference Site:	True Ranch Fee 2326H East Pad Sec.23-T15N-R65W	MD Reference:	WELL @ 5881.0ft (Original Well Elev)
Site Error:	0.0 ft	North Reference:	True
Reference Well:	True Ranch Fee 503-2326H	Survey Calculation Method:	Minimum Curvature
Well Error:	0.0 ft	Output errors are at	2.00 sigma
Reference Wellbore	Wellbore #1	Database:	US_EDM
Reference Design:	Plan #1 (1-29-18)	Offset TVD Reference:	Offset Datum

Company:	Clear Creek Resource Partners	Local Co-ordinate Reference:	Well True Ranch Fee 503-2326H
Project:	SEC.23-T15N-R65W	TVD Reference:	WELL @ 5881.0ft (Original Well Elev)
Reference Site:	True Ranch Fee 2326H East Pad Sec.23-T15N-R65W	MD Reference:	WELL @ 5881.0ft (Original Well Elev)
Site Error:	0.0 ft	North Reference:	True
Reference Well:	True Ranch Fee 503-2326H	Survey Calculation Method:	Minimum Curvature
Well Error:	0.0 ft	Output errors are at	2.00 sigma
Reference Wellbore	Wellbore #1	Database:	US_EDM
Reference Design:	Plan #1 (1-29-18)	Offset TVD Reference:	Offset Datum

Offset Design													Offset Site Error:	0.0 ft
Survey Program: 0-MWD													Offset Well Error:	0.0 ft
Reference		Offset		Semi Major Axis			Distance							Warning
Measured Depth (ft)	Vertical Depth (ft)	Measured Depth (ft)	Vertical Depth (ft)	Reference (ft)	Offset (ft)	Highside Toolface (°)	Offset Wellbore Centre +N/-S (ft)	+E/-W (ft)	Between Centres (ft)	Between Ellipses (ft)	Minimum Separation (ft)	Separation Factor		
0.0	0.0	0.0	0.0	0.0	0.0	90.00	0.0	30.4	30.4					
50.0	50.0	49.0	49.0	0.1	0.1	90.00	0.0	30.4	30.4	30.3	0.11	272.665		
100.0	100.0	99.0	99.0	0.1	0.1	90.00	0.0	30.4	30.4	30.1	0.22	135.771		
150.0	150.0	149.0	149.0	0.2	0.2	90.00	0.0	30.4	30.4	29.9	0.45	67.886		
200.0	200.0	199.0	199.0	0.3	0.3	90.00	0.0	30.4	30.4	29.7	0.67	45.182		
250.0	250.0	249.0	249.0	0.4	0.4	90.00	0.0	30.4	30.4	29.5	0.90	33.858		
300.0	300.0	299.0	299.0	0.6	0.6	90.00	0.0	30.4	30.4	29.2	1.12	27.073		
350.0	350.0	349.0	349.0	0.7	0.7	90.00	0.0	30.4	30.4	29.0	1.35	22.553		
400.0	400.0	399.0	399.0	0.8	0.8	90.00	0.0	30.4	30.4	28.8	1.57	19.327		
450.0	450.0	449.0	449.0	0.9	0.9	90.00	0.0	30.4	30.4	28.6	1.80	16.908		
500.0	500.0	499.0	499.0	1.0	1.0	90.00	0.0	30.4	30.4	28.3	2.02	15.027		
550.0	550.0	549.0	549.0	1.1	1.1	90.00	0.0	30.4	30.4	28.1	2.25	13.523		
600.0	600.0	599.0	599.0	1.2	1.2	90.00	0.0	30.4	30.4	27.9	2.47	12.292 CC, ES		
650.0	650.0	649.0	649.0	1.3	1.3	153.83	0.0	30.4	30.7	28.0	2.69	11.388		
700.0	700.0	699.0	699.0	1.5	1.5	154.61	0.0	30.4	31.5	28.6	2.92	10.820		
750.0	750.0	749.0	749.0	1.6	1.6	155.82	0.0	30.4	33.0	29.9	3.14	10.527		
800.0	799.9	798.9	798.9	1.7	1.7	157.33	0.0	30.4	35.1	31.8	3.36	10.457		
850.0	849.8	849.2	849.2	1.8	1.8	158.79	0.2	30.1	37.6	34.0	3.58	10.496		
900.0	899.7	899.6	899.6	1.9	1.9	159.91	0.8	29.3	40.1	36.3	3.80	10.554		
950.0	949.5	950.0	950.0	2.0	2.0	160.73	1.8	28.0	42.7	38.7	4.02	10.619		
1,000.0	999.3	1,000.4	1,000.3	2.1	2.1	161.31	3.2	26.2	45.4	41.1	4.24	10.695		
1,050.0	1,049.0	1,050.9	1,050.7	2.3	2.2	161.68	5.0	23.8	48.1	43.6	4.47	10.763		
1,100.0	1,098.6	1,101.4	1,101.1	2.4	2.4	161.87	7.2	20.9	50.8	46.2	4.69	10.838		
1,150.0	1,148.1	1,151.9	1,151.4	2.6	2.5	161.92	9.9	17.5	53.6	48.7	4.92	10.902		
1,200.0	1,197.5	1,202.5	1,201.7	2.7	2.6	161.84	12.9	13.5	56.5	51.3	5.15	10.973		
1,250.0	1,246.9	1,253.1	1,252.0	2.9	2.7	161.66	16.3	9.1	59.4	54.0	5.38	11.030		
1,300.0	1,296.1	1,303.7	1,302.2	3.0	2.9	161.37	20.2	4.0	62.3	56.7	5.61	11.093		
1,350.0	1,345.2	1,354.3	1,352.4	3.2	3.0	161.01	24.4	-1.5	65.3	59.4	5.86	11.139		
1,400.0	1,394.2	1,405.0	1,402.5	3.4	3.1	160.58	29.1	-7.6	68.3	62.2	6.10	11.191		
1,450.0	1,443.0	1,455.6	1,452.4	3.6	3.3	160.09	34.1	-14.2	71.3	65.0	6.35	11.232		
1,500.0	1,491.8	1,505.5	1,501.6	3.8	3.5	159.64	39.3	-20.9	74.5	67.9	6.61	11.273		
1,550.0	1,540.5	1,555.4	1,550.8	4.0	3.6	159.23	44.4	-27.6	77.7	70.8	6.88	11.296		
1,600.0	1,589.3	1,605.3	1,599.9	4.2	3.8	158.86	49.6	-34.4	80.8	73.7	7.14	11.325		
1,650.0	1,638.0	1,655.2	1,649.1	4.4	4.0	158.51	54.7	-41.1	84.0	76.6	7.41	11.342		
1,700.0	1,686.8	1,705.1	1,698.3	4.6	4.1	158.19	59.9	-47.8	87.2	79.5	7.68	11.349		
1,750.0	1,735.6	1,755.0	1,747.4	4.9	4.3	157.89	65.1	-54.5	90.4	82.4	7.96	11.356		
1,800.0	1,784.3	1,804.9	1,796.6	5.1	4.5	157.61	70.2	-61.3	93.6	85.3	8.24	11.352		
1,850.0	1,833.1	1,854.8	1,845.8	5.3	4.6	157.34	75.4	-68.0	96.8	88.2	8.53	11.348		
1,900.0	1,881.8	1,904.7	1,895.0	5.5	4.8	157.10	80.5	-74.7	100.0	91.1	8.81	11.342		
1,950.0	1,930.6	1,954.6	1,944.1	5.8	5.0	156.87	85.7	-81.4	103.1	94.0	9.10	11.332		
2,000.0	1,979.4	2,004.5	1,993.3	6.0	5.2	156.65	90.8	-88.2	106.3	96.9	9.39	11.322		
2,050.0	2,028.1	2,054.4	2,042.5	6.2	5.4	156.45	96.0	-94.9	109.5	99.8	9.68	11.309		
2,100.0	2,076.9	2,104.3	2,091.6	6.5	5.5	156.26	101.1	-101.6	112.7	102.7	9.98	11.296		
2,150.0	2,125.6	2,154.2	2,140.8	6.7	5.7	156.08	106.3	-108.3	115.9	105.6	10.28	11.281		
2,200.0	2,174.4	2,204.1	2,190.0	6.9	5.9	155.91	111.4	-115.1	119.1	108.5	10.57	11.266		
2,250.0	2,223.2	2,254.0	2,239.2	7.2	6.1	155.74	116.6	-121.8	122.3	111.4	10.87	11.250		
2,300.0	2,271.9	2,303.9	2,288.3	7.4	6.3	155.59	121.7	-128.5	125.5	114.3	11.17	11.234		
2,350.0	2,320.7	2,353.8	2,337.5	7.6	6.5	155.44	126.9	-135.2	128.7	117.2	11.47	11.217		
2,400.0	2,369.4	2,403.7	2,386.7	7.9	6.7	155.30	132.0	-142.0	131.9	120.1	11.78	11.200		
2,450.0	2,418.2	2,453.6	2,435.9	8.1	6.8	155.17	137.2	-148.7	135.1	123.0	12.08	11.183		
2,500.0	2,467.0	2,503.5	2,485.0	8.3	7.0	155.04	142.3	-155.4	138.3	125.9	12.39	11.166		

CC - Min centre to center distance or convergent point, SF - min separation factor, ES - min ellipse separation

Company:	Clear Creek Resource Partners	Local Co-ordinate Reference:	Well True Ranch Fee 503-2326H
Project:	SEC.23-T15N-R65W	TVD Reference:	WELL @ 5881.0ft (Original Well Elev)
Reference Site:	True Ranch Fee 2326H East Pad Sec.23-T15N-R65W	MD Reference:	WELL @ 5881.0ft (Original Well Elev)
Site Error:	0.0 ft	North Reference:	True
Reference Well:	True Ranch Fee 503-2326H	Survey Calculation Method:	Minimum Curvature
Well Error:	0.0 ft	Output errors are at	2.00 sigma
Reference Wellbore	Wellbore #1	Database:	US_EDM
Reference Design:	Plan #1 (1-29-18)	Offset TVD Reference:	Offset Datum

Offset Design		True Ranch Fee 2326H East Pad Sec.23-T15N-R65W - True Ranch Fee 203-2326H - Wellbore #1 - Pla											Offset Site Error:		0.0 ft
Survey Program: 0-MWD													Offset Well Error:		0.0 ft
Reference		Offset		Semi Major Axis			Distance							Warning	
Measured Depth (ft)	Vertical Depth (ft)	Measured Depth (ft)	Vertical Depth (ft)	Reference (ft)	Offset (ft)	Highside Toolface (°)	Offset Wellbore Centre +N/-S (ft)	+E/-W (ft)	Between Centres (ft)	Between Ellipses (ft)	Minimum Separation (ft)	Separation Factor			
2,550.0	2,515.7	2,553.3	2,534.2	8.6	7.2	154.92	147.5	-162.1	141.5	128.8	12.69	11.149			
2,600.0	2,564.5	2,603.2	2,583.4	8.8	7.4	154.81	152.6	-168.9	144.7	131.7	13.00	11.133			
2,650.0	2,613.3	2,653.1	2,632.5	9.0	7.6	154.70	157.8	-175.6	147.9	134.6	13.31	11.116			
2,700.0	2,662.0	2,703.0	2,681.7	9.3	7.8	154.59	163.0	-182.3	151.1	137.5	13.62	11.099			
2,750.0	2,710.8	2,752.9	2,730.9	9.5	8.0	154.49	168.1	-189.0	154.3	140.4	13.93	11.083			
2,800.0	2,759.5	2,802.8	2,780.1	9.8	8.2	154.39	173.3	-195.8	157.5	143.3	14.24	11.067			
2,850.0	2,808.3	2,852.7	2,829.2	10.0	8.4	154.30	178.4	-202.5	160.7	146.2	14.55	11.050			
2,900.0	2,857.1	2,902.6	2,878.4	10.2	8.6	154.21	183.6	-209.2	164.0	149.1	14.86	11.035			
2,950.0	2,905.8	2,952.5	2,927.6	10.5	8.7	154.12	188.7	-215.9	167.2	152.0	15.17	11.019			
3,000.0	2,954.6	3,002.4	2,976.7	10.7	8.9	154.04	193.9	-222.7	170.4	154.9	15.48	11.004			
3,050.0	3,003.3	3,052.3	3,025.9	10.9	9.1	153.96	199.0	-229.4	173.6	157.8	15.80	10.989			
3,100.0	3,052.1	3,102.2	3,075.1	11.2	9.3	153.88	204.2	-236.1	176.8	160.7	16.11	10.974			
3,150.0	3,100.9	3,152.1	3,124.3	11.4	9.5	153.81	209.3	-242.8	180.0	163.6	16.42	10.960			
3,200.0	3,149.6	3,202.0	3,173.4	11.7	9.7	153.74	214.5	-249.6	183.2	166.5	16.74	10.946			
3,250.0	3,198.4	3,251.9	3,222.6	11.9	9.9	153.67	219.6	-256.3	186.4	169.4	17.05	10.932			
3,300.0	3,247.1	3,301.8	3,271.8	12.1	10.1	153.60	224.8	-263.0	189.6	172.3	17.37	10.918			
3,350.0	3,295.9	3,351.7	3,320.9	12.4	10.3	153.53	229.9	-269.7	192.8	175.1	17.68	10.905			
3,400.0	3,344.7	3,401.6	3,370.1	12.6	10.5	153.47	235.1	-276.5	196.0	178.0	18.00	10.892			
3,450.0	3,393.4	3,451.5	3,419.3	12.9	10.7	153.41	240.2	-283.2	199.2	180.9	18.32	10.879			
3,500.0	3,442.2	3,501.4	3,468.5	13.1	10.9	153.35	245.4	-289.9	202.5	183.8	18.63	10.866			
3,550.0	3,490.9	3,551.3	3,517.6	13.3	11.1	153.30	250.5	-296.6	205.7	186.7	18.95	10.854			
3,600.0	3,539.7	3,601.2	3,566.8	13.6	11.2	153.24	255.7	-303.4	208.9	189.6	19.27	10.842			
3,650.0	3,588.5	3,651.1	3,616.0	13.8	11.4	153.19	260.9	-310.1	212.1	192.5	19.58	10.830			
3,700.0	3,637.2	3,701.0	3,665.2	14.1	11.6	153.13	266.0	-316.8	215.3	195.4	19.90	10.818			
3,750.0	3,686.0	3,750.9	3,714.3	14.3	11.8	153.08	271.2	-323.5	218.5	198.3	20.22	10.807			
3,800.0	3,734.7	3,800.8	3,763.5	14.5	12.0	153.04	276.3	-330.3	221.7	201.2	20.54	10.796			
3,850.0	3,783.5	3,850.7	3,812.7	14.8	12.2	152.99	281.5	-337.0	224.9	204.1	20.86	10.785			
3,900.0	3,832.3	3,900.6	3,861.8	15.0	12.4	152.94	286.6	-343.7	228.1	207.0	21.17	10.774			
3,950.0	3,881.0	3,950.4	3,911.0	15.3	12.6	152.90	291.8	-350.4	231.4	209.9	21.49	10.764			
4,000.0	3,929.8	4,000.3	3,960.2	15.5	12.8	152.85	296.9	-357.2	234.6	212.8	21.81	10.753			
4,050.0	3,978.5	4,050.2	4,009.4	15.7	13.0	152.81	302.1	-363.9	237.8	215.6	22.13	10.743			
4,100.0	4,027.3	4,100.1	4,058.5	16.0	13.2	152.77	307.2	-370.6	241.0	218.5	22.45	10.733			
4,150.0	4,076.1	4,150.0	4,107.7	16.2	13.4	152.73	312.4	-377.3	244.2	221.4	22.77	10.724			
4,200.0	4,124.8	4,199.9	4,156.9	16.5	13.6	152.69	317.5	-384.1	247.4	224.3	23.09	10.714			
4,250.0	4,173.6	4,249.8	4,206.0	16.7	13.8	152.65	322.7	-390.8	250.6	227.2	23.41	10.705			
4,300.0	4,222.3	4,299.7	4,255.2	17.0	14.0	152.61	327.8	-397.5	253.8	230.1	23.73	10.696			
4,350.0	4,271.1	4,349.6	4,304.4	17.2	14.2	152.58	333.0	-404.2	257.0	233.0	24.05	10.687			
4,400.0	4,319.9	4,399.5	4,353.6	17.4	14.4	152.54	338.1	-411.0	260.3	235.9	24.37	10.678			
4,450.0	4,368.6	4,449.4	4,402.7	17.7	14.5	152.51	343.3	-417.7	263.5	238.8	24.69	10.670			
4,500.0	4,417.4	4,499.3	4,451.9	17.9	14.7	152.47	348.4	-424.4	266.7	241.7	25.01	10.661			
4,550.0	4,466.1	4,549.2	4,501.1	18.2	14.9	152.44	353.6	-431.1	269.9	244.6	25.34	10.653			
4,600.0	4,514.9	4,599.1	4,550.2	18.4	15.1	152.41	358.8	-437.9	273.1	247.5	25.66	10.645			
4,650.0	4,563.7	4,649.0	4,599.4	18.6	15.3	152.38	363.9	-444.6	276.3	250.3	25.98	10.637			
4,700.0	4,612.4	4,698.9	4,648.6	18.9	15.5	152.35	369.1	-451.3	279.5	253.2	26.30	10.629			
4,750.0	4,661.2	4,748.8	4,697.8	19.1	15.7	152.32	374.2	-458.0	282.8	256.1	26.62	10.621			
4,800.0	4,709.9	4,796.7	4,746.9	19.4	15.9	152.29	379.4	-464.8	286.0	259.0	26.94	10.614			
4,850.0	4,758.7	4,848.6	4,796.1	19.6	16.1	152.26	384.5	-471.5	289.2	261.9	27.26	10.606			
4,900.0	4,807.5	4,898.5	4,845.3	19.8	16.3	152.23	389.7	-478.2	292.4	264.8	27.59	10.599			
4,950.0	4,856.2	4,948.4	4,894.4	20.1	16.5	152.20	394.8	-484.9	295.6	267.7	27.91	10.592			
5,000.0	4,905.0	4,998.3	4,943.6	20.3	16.7	152.18	400.0	-491.7	298.8	270.6	28.23	10.585			
5,050.0	4,953.7	5,048.2	4,992.8	20.6	16.9	152.15	405.1	-498.4	302.0	273.5	28.55	10.578			

CC - Min centre to center distance or convergent point, SF - min separation factor, ES - min ellipse separation

Company:	Clear Creek Resource Partners	Local Co-ordinate Reference:	Well True Ranch Fee 503-2326H
Project:	SEC.23-T15N-R65W	TVD Reference:	WELL @ 5881.0ft (Original Well Elev)
Reference Site:	True Ranch Fee 2326H East Pad Sec.23-T15N-R65W	MD Reference:	WELL @ 5881.0ft (Original Well Elev)
Site Error:	0.0 ft	North Reference:	True
Reference Well:	True Ranch Fee 503-2326H	Survey Calculation Method:	Minimum Curvature
Well Error:	0.0 ft	Output errors are at	2.00 sigma
Reference Wellbore	Wellbore #1	Database:	US_EDM
Reference Design:	Plan #1 (1-29-18)	Offset TVD Reference:	Offset Datum

Offset Design True Ranch Fee 2326H East Pad Sec.23-T15N-R65W - True Ranch Fee 203-2326H - Wellbore #1 - Pla													Offset Site Error:	0.0 ft
Survey Program: 0-MWD													Offset Well Error:	0.0 ft
Measured Depth (ft)	Vertical Depth (ft)	Measured Depth (ft)	Vertical Depth (ft)	Reference (ft)	Offset (ft)	Highside Toolface (°)	Offset Wellbore Centre +N/-S (ft)	+E/-W (ft)	Between Centres (ft)	Between Ellipses (ft)	Minimum Separation (ft)	Separation Factor	Warning	
5,100.0	5,002.5	5,098.1	5,042.0	20.8	17.1	152.13	410.3	-505.1	305.2	276.4	28.87	10.571		
5,150.0	5,051.3	5,148.0	5,091.1	21.1	17.3	152.10	415.4	-511.8	308.5	279.3	29.20	10.565		
5,200.0	5,100.0	5,197.9	5,140.3	21.3	17.5	152.08	420.6	-518.6	311.7	282.2	29.52	10.558		
5,250.0	5,148.8	5,247.8	5,189.5	21.5	17.7	152.05	425.7	-525.3	314.9	285.0	29.84	10.552		
5,300.0	5,197.5	5,297.7	5,238.7	21.8	17.9	152.03	430.9	-532.0	318.1	287.9	30.16	10.545		
5,350.0	5,246.3	5,347.5	5,287.8	22.0	18.1	152.01	436.0	-538.7	321.3	290.8	30.49	10.539		
5,400.0	5,295.1	5,397.4	5,337.0	22.3	18.3	151.98	441.2	-545.5	324.5	293.7	30.81	10.533		
5,450.0	5,343.8	5,447.3	5,386.2	22.5	18.4	151.96	446.3	-552.2	327.7	296.6	31.13	10.527		
5,500.0	5,392.6	5,497.2	5,435.3	22.7	18.6	151.94	451.5	-558.9	330.8	299.4	31.46	10.521		
5,550.0	5,441.6	5,547.2	5,484.6	22.9	18.8	151.87	456.7	-565.6	333.3	301.5	31.78	10.487		
5,600.0	5,490.7	5,595.4	5,532.1	23.1	19.0	151.74	461.6	-572.1	334.9	302.9	32.10	10.436		
5,650.0	5,540.0	5,641.3	5,577.4	23.2	19.1	151.61	465.9	-577.8	336.4	304.0	32.36	10.394		
5,700.0	5,589.4	5,687.1	5,622.7	23.4	19.3	151.49	469.8	-582.8	337.7	305.1	32.62	10.352		
5,750.0	5,638.9	5,732.9	5,668.2	23.5	19.4	151.39	473.3	-587.3	338.8	306.0	32.85	10.315		
5,800.0	5,688.6	5,778.7	5,713.7	23.6	19.5	151.30	476.3	-591.3	339.8	306.8	33.07	10.277		
5,850.0	5,738.3	5,824.5	5,759.3	23.7	19.6	151.23	478.8	-594.6	340.7	307.4	33.26	10.244		
5,900.0	5,788.2	5,870.3	5,805.0	23.8	19.7	151.17	481.0	-597.4	341.4	308.0	33.44	10.210		
5,950.0	5,838.1	5,916.1	5,850.7	23.9	19.8	151.12	482.6	-599.5	341.9	308.4	33.59	10.180		
6,000.0	5,888.0	5,961.9	5,896.5	24.0	19.8	151.08	483.9	-601.2	342.3	308.6	33.73	10.150		
6,050.0	5,938.0	6,007.7	5,942.3	24.0	19.9	151.06	484.6	-602.2	342.6	308.7	33.84	10.123		
6,100.0	5,988.0	6,053.5	5,988.1	24.1	20.0	151.05	485.0	-602.6	342.7	308.7	33.94	10.096		
6,150.0	6,038.0	6,102.4	6,037.0	24.2	20.0	87.49	485.0	-602.6	342.7	308.4	34.28	9.996		
6,200.0	6,088.0	6,152.4	6,087.0	24.2	20.1	87.49	485.0	-602.6	342.7	308.3	34.44	9.950		
6,250.0	6,138.0	6,202.4	6,137.0	24.3	20.2	87.49	485.0	-602.6	342.7	308.1	34.60	9.903		
6,300.0	6,188.0	6,252.4	6,187.0	24.3	20.2	87.49	485.0	-602.6	342.7	307.9	34.77	9.857		
6,350.0	6,238.0	6,302.4	6,237.0	24.4	20.3	87.49	485.0	-602.6	342.7	307.8	34.93	9.811		
6,400.0	6,288.0	6,352.4	6,287.0	24.4	20.4	87.49	485.0	-602.6	342.7	307.6	35.10	9.765		
6,450.0	6,338.0	6,402.4	6,337.0	24.5	20.5	87.49	485.0	-602.6	342.7	307.4	35.26	9.719		
6,500.0	6,388.0	6,452.4	6,387.0	24.6	20.5	87.49	485.0	-602.6	342.7	307.3	35.43	9.673		
6,550.0	6,438.0	6,502.4	6,437.0	24.6	20.6	87.49	485.0	-602.6	342.7	307.1	35.59	9.628		
6,600.0	6,488.0	6,552.4	6,487.0	24.7	20.7	87.49	485.0	-602.6	342.7	306.9	35.76	9.583		
6,650.0	6,538.0	6,602.4	6,537.0	24.8	20.8	87.49	485.0	-602.6	342.7	306.8	35.93	9.538		
6,700.0	6,588.0	6,652.4	6,587.0	24.8	20.8	87.49	485.0	-602.6	342.7	306.6	36.10	9.494		
6,750.0	6,638.0	6,702.4	6,637.0	24.9	20.9	87.49	485.0	-602.6	342.7	306.4	36.26	9.450		
6,800.0	6,688.0	6,752.4	6,687.0	25.0	21.0	87.49	485.0	-602.6	342.7	306.3	36.43	9.406		
6,850.0	6,738.0	6,802.4	6,737.0	25.0	21.1	87.49	485.0	-602.6	342.7	306.1	36.60	9.362		
6,900.0	6,788.0	6,852.4	6,787.0	25.1	21.2	87.49	485.0	-602.6	342.7	305.9	36.78	9.318		
6,950.0	6,838.0	6,902.4	6,837.0	25.1	21.2	87.49	485.0	-602.6	342.7	305.7	36.95	9.275		
7,000.0	6,888.0	6,952.4	6,887.0	25.2	21.3	87.49	485.0	-602.6	342.7	305.6	37.12	9.232		
7,050.0	6,938.0	7,002.4	6,937.0	25.3	21.4	87.49	485.0	-602.6	342.7	305.4	37.29	9.190		
7,100.0	6,988.0	7,052.4	6,987.0	25.3	21.5	87.49	485.0	-602.6	342.7	305.2	37.46	9.147		
7,150.0	7,038.0	7,102.4	7,037.0	25.4	21.5	87.49	485.0	-602.6	342.7	305.1	37.64	9.105		
7,200.0	7,088.0	7,152.4	7,087.0	25.5	21.6	87.49	485.0	-602.6	342.7	304.9	37.81	9.063		
7,250.0	7,138.0	7,202.4	7,137.0	25.5	21.7	87.49	485.0	-602.6	342.7	304.7	37.99	9.021		
7,300.0	7,188.0	7,252.4	7,187.0	25.6	21.8	87.49	485.0	-602.6	342.7	304.5	38.16	8.980		
7,350.0	7,238.0	7,302.4	7,237.0	25.7	21.9	87.49	485.0	-602.6	342.7	304.4	38.34	8.939		
7,400.0	7,288.0	7,352.4	7,287.0	25.8	21.9	87.49	485.0	-602.6	342.7	304.2	38.51	8.898		
7,450.0	7,338.0	7,402.4	7,337.0	25.8	22.0	87.49	485.0	-602.6	342.7	304.0	38.69	8.857		
7,500.0	7,388.0	7,452.4	7,387.0	25.9	22.1	87.49	485.0	-602.6	342.7	303.8	38.87	8.817		
7,550.0	7,438.0	7,502.4	7,437.0	26.0	22.2	87.49	485.0	-602.6	342.7	303.6	39.05	8.777		
7,600.0	7,488.0	7,552.4	7,487.0	26.0	22.3	87.49	485.0	-602.6	342.7	303.5	39.22	8.737		

CC - Min centre to center distance or convergent point, SF - min separation factor, ES - min ellipse separation

Company:	Clear Creek Resource Partners	Local Co-ordinate Reference:	Well True Ranch Fee 503-2326H
Project:	SEC.23-T15N-R65W	TVD Reference:	WELL @ 5881.0ft (Original Well Elev)
Reference Site:	True Ranch Fee 2326H East Pad Sec.23-T15N-R65W	MD Reference:	WELL @ 5881.0ft (Original Well Elev)
Site Error:	0.0 ft	North Reference:	True
Reference Well:	True Ranch Fee 503-2326H	Survey Calculation Method:	Minimum Curvature
Well Error:	0.0 ft	Output errors are at	2.00 sigma
Reference Wellbore	Wellbore #1	Database:	US_EDM
Reference Design:	Plan #1 (1-29-18)	Offset TVD Reference:	Offset Datum

Offset Design True Ranch Fee 2326H East Pad Sec.23-T15N-R65W - True Ranch Fee 203-2326H - Wellbore #1 - Pla												Offset Site Error:	0.0 ft
Survey Program: 0-MWD												Offset Well Error:	0.0 ft
Measured Depth (ft)	Vertical Depth (ft)	Measured Depth (ft)	Vertical Depth (ft)	Reference (ft)	Offset (ft)	Semi Major Axis Highside Toolface (°)	Offset Wellbore Centre +N/-S (ft)	+E/-W (ft)	Between Centres (ft)	Between Ellipses (ft)	Minimum Separation (ft)	Separation Factor	Warning
7,650.0	7,538.0	7,602.4	7,537.0	26.1	22.3	87.49	485.0	-602.6	342.7	303.3	39.40	8.697	
7,700.0	7,588.0	7,652.4	7,587.0	26.2	22.4	87.49	485.0	-602.6	342.7	303.1	39.58	8.658	
7,750.0	7,638.0	7,702.4	7,637.0	26.2	22.5	87.49	485.0	-602.6	342.7	302.9	39.76	8.619	
7,800.0	7,688.0	7,752.8	7,687.3	26.3	22.6	87.51	484.9	-602.6	342.7	302.8	39.93	8.582	
7,850.0	7,738.0	7,804.0	7,738.5	26.4	22.6	87.98	482.1	-602.7	342.5	302.6	39.98	8.568	
7,900.0	7,788.0	7,854.6	7,788.7	26.4	22.7	89.04	475.7	-602.8	342.3	302.4	39.87	8.585	
7,950.0	7,838.0	7,904.1	7,837.2	26.5	22.7	90.65	466.1	-602.9	342.1	302.5	39.63	8.633	
7,954.2	7,842.2	7,908.2	7,841.2	26.5	22.7	-90.00	465.2	-602.9	342.1	302.7	39.44	8.674	
8,000.0	7,888.0	7,952.1	7,883.5	26.6	22.7	-88.09	453.6	-603.1	342.3	303.2	39.14	8.747	
8,050.0	7,937.9	7,999.1	7,928.0	26.6	22.7	-85.97	438.4	-603.3	343.0	304.3	38.76	8.850	
8,100.0	7,987.4	8,045.3	7,970.7	26.7	22.6	-83.88	420.6	-603.5	344.2	305.8	38.38	8.969	
8,150.0	8,036.4	8,090.9	8,011.5	26.7	22.6	-81.84	400.4	-603.8	345.8	307.8	38.00	9.101	
8,200.0	8,084.5	8,135.8	8,050.4	26.7	22.5	-79.87	378.0	-604.2	347.9	310.2	37.63	9.244	
8,250.0	8,131.6	8,180.0	8,087.3	26.6	22.5	-77.97	353.6	-604.5	350.2	313.0	37.27	9.397	
8,300.0	8,177.4	8,223.8	8,122.2	26.6	22.4	-76.15	327.3	-604.9	352.9	316.0	36.92	9.558	
8,350.0	8,221.7	8,266.9	8,155.0	26.6	22.3	-74.42	299.2	-605.3	355.8	319.2	36.57	9.728	
8,400.0	8,264.3	8,309.6	8,185.8	26.5	22.3	-72.78	269.6	-605.7	358.9	322.6	36.23	9.906	
8,450.0	8,304.9	8,350.0	8,213.2	26.5	22.2	-71.29	240.0	-606.1	362.1	326.2	35.88	10.090	
8,500.0	8,343.4	8,393.8	8,241.0	26.4	22.1	-69.79	206.2	-606.6	365.3	329.8	35.52	10.285	
8,550.0	8,379.6	8,435.2	8,265.3	26.3	22.0	-68.45	172.6	-607.1	368.6	333.4	35.16	10.482	
8,600.0	8,413.3	8,476.4	8,287.5	26.3	22.0	-67.21	138.0	-607.6	371.8	337.0	34.80	10.682	
8,650.0	8,444.4	8,517.3	8,307.6	26.2	21.9	-66.08	102.4	-608.1	374.9	340.5	34.45	10.883	
8,700.0	8,472.6	8,557.8	8,325.5	26.1	21.9	-65.05	66.0	-608.6	377.9	343.8	34.11	11.079	
8,750.0	8,497.9	8,600.0	8,341.8	26.1	21.8	-64.10	27.1	-609.1	380.7	346.9	33.79	11.267	
8,800.0	8,520.1	8,638.3	8,354.7	26.0	21.8	-63.31	-9.0	-609.6	383.3	349.8	33.53	11.432	
8,850.0	8,539.1	8,678.2	8,366.0	26.0	21.8	-62.60	-47.2	-610.2	385.7	352.4	33.32	11.575	
8,900.0	8,554.9	8,718.0	8,375.1	26.0	21.8	-61.99	-86.0	-610.7	387.7	354.6	33.18	11.686	
8,950.0	8,567.3	8,757.7	8,382.1	26.0	21.8	-61.48	-125.0	-611.3	389.5	356.4	33.10	11.766	
9,000.0	8,576.3	8,800.0	8,387.1	26.0	21.8	-61.05	-167.0	-611.9	391.0	357.8	33.15	11.795	
9,050.0	8,581.9	8,836.7	8,389.5	26.0	21.9	-60.77	-203.6	-612.4	392.1	358.8	33.28	11.779	
9,100.0	8,584.0	8,879.0	8,390.0	26.1	22.0	-60.56	-245.9	-613.0	392.7	359.2	33.53	11.713	
9,150.0	8,583.9	8,929.0	8,389.8	26.2	22.2	-60.55	-295.9	-613.7	392.8	358.7	34.03	11.543	
9,200.0	8,583.9	8,979.0	8,389.7	26.4	22.5	-60.54	-345.9	-614.5	392.8	358.2	34.58	11.357	
9,250.0	8,583.8	9,029.0	8,389.6	26.6	22.9	-60.54	-395.9	-615.2	392.8	357.5	35.31	11.124	
9,300.0	8,583.7	9,079.0	8,389.4	26.9	23.3	-60.53	-445.9	-616.0	392.8	356.7	36.07	10.891	
9,350.0	8,583.6	9,129.0	8,389.3	27.1	23.7	-60.52	-495.9	-616.7	392.8	355.9	36.92	10.639	
9,400.0	8,583.6	9,179.0	8,389.2	27.5	24.2	-60.51	-545.9	-617.5	392.8	355.0	37.80	10.392	
9,450.0	8,583.5	9,229.0	8,389.1	27.8	24.7	-60.51	-595.9	-618.2	392.9	354.1	38.77	10.133	
9,500.0	8,583.4	9,279.0	8,388.9	28.2	25.2	-60.50	-645.9	-619.0	392.9	353.1	39.76	9.881	
9,550.0	8,583.3	9,329.0	8,388.8	28.7	25.8	-60.49	-695.8	-619.7	392.9	352.1	40.82	9.624	
9,600.0	8,583.3	9,379.0	8,388.7	29.1	26.4	-60.48	-745.8	-620.5	392.9	351.0	41.91	9.376	
9,650.0	8,583.2	9,429.0	8,388.5	29.6	27.0	-60.47	-795.8	-621.2	392.9	349.9	43.05	9.127	
9,700.0	8,583.1	9,479.0	8,388.4	30.2	27.7	-60.47	-845.8	-621.9	392.9	348.7	44.21	8.887	
9,750.0	8,583.0	9,529.0	8,388.3	30.7	28.3	-60.46	-895.8	-622.7	392.9	347.5	45.43	8.650	
9,800.0	8,583.0	9,579.0	8,388.2	31.3	29.0	-60.45	-945.8	-623.4	393.0	346.3	46.66	8.422	
9,850.0	8,582.9	9,629.0	8,388.0	31.9	29.7	-60.44	-995.8	-624.2	393.0	345.0	47.93	8.198	
9,900.0	8,582.8	9,679.0	8,387.9	32.5	30.4	-60.43	-1,045.8	-624.9	393.0	343.8	49.22	7.984	
9,950.0	8,582.7	9,729.0	8,387.8	33.2	31.1	-60.43	-1,095.8	-625.7	393.0	342.5	50.55	7.775	
10,000.0	8,582.7	9,779.0	8,387.6	33.9	31.8	-60.42	-1,145.8	-626.4	393.0	341.1	51.88	7.575	
10,050.0	8,582.6	9,829.0	8,387.5	34.5	32.6	-60.41	-1,195.8	-627.2	393.0	339.8	53.25	7.381	
10,100.0	8,582.5	9,879.0	8,387.4	35.2	33.3	-60.40	-1,245.8	-627.9	393.0	338.4	54.63	7.195	

CC - Min centre to center distance or convergent point, SF - min separation factor, ES - min ellipse separation

Company:	Clear Creek Resource Partners	Local Co-ordinate Reference:	Well True Ranch Fee 503-2326H
Project:	SEC.23-T15N-R65W	TVD Reference:	WELL @ 5881.0ft (Original Well Elev)
Reference Site:	True Ranch Fee 2326H East Pad Sec.23-T15N-R65W	MD Reference:	WELL @ 5881.0ft (Original Well Elev)
Site Error:	0.0 ft	North Reference:	True
Reference Well:	True Ranch Fee 503-2326H	Survey Calculation Method:	Minimum Curvature
Well Error:	0.0 ft	Output errors are at	2.00 sigma
Reference Wellbore	Wellbore #1	Database:	US_EDM
Reference Design:	Plan #1 (1-29-18)	Offset TVD Reference:	Offset Datum

Offset Design				True Ranch Fee 2326H East Pad Sec.23-T15N-R65W - True Ranch Fee 203-2326H - Wellbore #1 - Pla										Offset Site Error:		0.0 ft
Survey Program: 0-MWD														Offset Well Error:		0.0 ft
Reference		Offset		Semi Major Axis			Distance							Warning		
Measured Depth (ft)	Vertical Depth (ft)	Measured Depth (ft)	Vertical Depth (ft)	Reference (ft)	Offset (ft)	Highside Toolface (°)	Offset Wellbore Centre +N/-S (ft)	+E/-W (ft)	Between Centres (ft)	Between Ellipses (ft)	Minimum Separation (ft)	Separation Factor				
10,150.0	8,582.4	9,929.0	8,387.3	35.9	34.1	-60.40	-1,295.8	-628.7	393.1	337.0	56.03	7.015				
10,200.0	8,582.3	9,979.0	8,387.1	36.7	34.9	-60.39	-1,345.8	-629.4	393.1	335.6	57.44	6.843				
10,250.0	8,582.3	10,029.0	8,387.0	37.4	35.6	-60.38	-1,395.8	-630.1	393.1	334.2	58.88	6.676				
10,300.0	8,582.2	10,079.0	8,386.9	38.1	36.4	-60.37	-1,445.8	-630.9	393.1	332.8	60.32	6.516				
10,350.0	8,582.1	10,129.0	8,386.7	38.9	37.2	-60.36	-1,495.8	-631.6	393.1	331.3	61.79	6.362				
10,400.0	8,582.0	10,179.0	8,386.6	39.6	38.0	-60.36	-1,545.7	-632.4	393.1	329.9	63.26	6.215				
10,450.0	8,582.0	10,229.0	8,386.5	40.4	38.8	-60.35	-1,595.7	-633.1	393.1	328.4	64.75	6.072				
10,500.0	8,581.9	10,279.0	8,386.3	41.2	39.7	-60.34	-1,645.7	-633.9	393.2	326.9	66.24	5.936				
10,550.0	8,581.8	10,329.0	8,386.2	42.0	40.5	-60.33	-1,695.7	-634.6	393.2	325.4	67.75	5.804				
10,600.0	8,581.7	10,379.0	8,386.1	42.8	41.3	-60.32	-1,745.7	-635.4	393.2	323.9	69.26	5.677				
10,650.0	8,581.7	10,429.0	8,386.0	43.6	42.2	-60.32	-1,795.7	-636.1	393.2	322.4	70.78	5.555				
10,700.0	8,581.6	10,479.0	8,385.8	44.4	43.0	-60.31	-1,845.7	-636.9	393.2	320.9	72.31	5.438				
10,750.0	8,581.5	10,529.0	8,385.7	45.2	43.8	-60.30	-1,895.7	-637.6	393.2	319.4	73.85	5.324				
10,800.0	8,581.4	10,579.0	8,385.6	46.0	44.7	-60.29	-1,945.7	-638.3	393.2	317.8	75.40	5.216				
10,850.0	8,581.4	10,629.0	8,385.4	46.9	45.6	-60.29	-1,995.7	-639.1	393.3	316.3	76.95	5.110				
10,900.0	8,581.3	10,679.0	8,385.3	47.7	46.4	-60.28	-2,045.7	-639.8	393.3	314.8	78.51	5.009				
10,950.0	8,581.2	10,729.0	8,385.2	48.5	47.3	-60.27	-2,095.7	-640.6	393.3	313.2	80.08	4.911				
11,000.0	8,581.1	10,779.0	8,385.1	49.4	48.1	-60.26	-2,145.7	-641.3	393.3	311.7	81.64	4.817				
11,050.0	8,581.1	10,829.0	8,384.9	50.2	49.0	-60.25	-2,195.7	-642.1	393.3	310.1	83.22	4.726				
11,100.0	8,581.0	10,879.0	8,384.8	51.1	49.9	-60.25	-2,245.7	-642.8	393.3	308.5	84.80	4.638				
11,150.0	8,580.9	10,929.0	8,384.7	51.9	50.8	-60.24	-2,295.7	-643.6	393.3	307.0	86.39	4.553				
11,200.0	8,580.8	10,979.0	8,384.5	52.8	51.6	-60.23	-2,345.7	-644.3	393.4	305.4	87.98	4.471				
11,250.0	8,580.8	11,029.0	8,384.4	53.6	52.5	-60.22	-2,395.6	-645.1	393.4	303.8	89.57	4.392				
11,300.0	8,580.7	11,079.0	8,384.3	54.5	53.4	-60.21	-2,445.6	-645.8	393.4	302.2	91.17	4.315				
11,350.0	8,580.6	11,129.0	8,384.1	55.4	54.3	-60.21	-2,495.6	-646.5	393.4	300.6	92.77	4.241				
11,400.0	8,580.5	11,179.0	8,384.0	56.2	55.2	-60.20	-2,545.6	-647.3	393.4	299.0	94.38	4.169				
11,450.0	8,580.5	11,229.0	8,383.9	57.1	56.1	-60.19	-2,595.6	-648.0	393.4	297.4	95.98	4.099				
11,500.0	8,580.4	11,279.0	8,383.8	58.0	57.0	-60.18	-2,645.6	-648.8	393.4	295.8	97.60	4.031				
11,550.0	8,580.3	11,329.0	8,383.6	58.9	57.9	-60.18	-2,695.6	-649.5	393.5	294.2	99.21	3.966				
11,600.0	8,580.2	11,379.0	8,383.5	59.7	58.8	-60.17	-2,745.6	-650.3	393.5	292.6	100.83	3.902				
11,650.0	8,580.2	11,429.0	8,383.4	60.6	59.7	-60.16	-2,795.6	-651.0	393.5	291.0	102.45	3.841				
11,700.0	8,580.1	11,479.0	8,383.2	61.5	60.6	-60.15	-2,845.6	-651.8	393.5	289.4	104.07	3.781				
11,750.0	8,580.0	11,529.0	8,383.1	62.4	61.5	-60.14	-2,895.6	-652.5	393.5	287.8	105.70	3.723				
11,800.0	8,579.9	11,579.0	8,383.0	63.3	62.4	-60.14	-2,945.6	-653.3	393.5	286.2	107.32	3.667				
11,850.0	8,579.9	11,629.0	8,382.9	64.2	63.3	-60.13	-2,995.6	-654.0	393.5	284.6	108.95	3.612				
11,900.0	8,579.8	11,679.0	8,382.7	65.1	64.2	-60.12	-3,045.6	-654.7	393.6	283.0	110.58	3.559				
11,950.0	8,579.7	11,729.0	8,382.6	66.0	65.1	-60.11	-3,095.6	-655.5	393.6	281.4	112.22	3.507				
12,000.0	8,579.6	11,779.0	8,382.5	66.9	66.0	-60.11	-3,145.6	-656.2	393.6	279.7	113.85	3.457				
12,050.0	8,579.6	11,829.0	8,382.3	67.8	67.0	-60.10	-3,195.6	-657.0	393.6	278.1	115.49	3.408				
12,100.0	8,579.5	11,879.0	8,382.2	68.7	67.9	-60.09	-3,245.6	-657.7	393.6	276.5	117.13	3.361				
12,150.0	8,579.4	11,929.0	8,382.1	69.6	68.8	-60.08	-3,295.5	-658.5	393.6	274.9	118.77	3.314				
12,200.0	8,579.3	11,979.0	8,381.9	70.5	69.7	-60.07	-3,345.5	-659.2	393.6	273.2	120.41	3.269				
12,250.0	8,579.3	12,029.0	8,381.8	71.4	70.6	-60.07	-3,395.5	-660.0	393.7	271.6	122.05	3.225				
12,300.0	8,579.2	12,079.0	8,381.7	72.3	71.6	-60.06	-3,445.5	-660.7	393.7	270.0	123.70	3.183				
12,350.0	8,579.1	12,129.0	8,381.6	73.2	72.5	-60.05	-3,495.5	-661.5	393.7	268.3	125.34	3.141				
12,400.0	8,579.0	12,179.0	8,381.4	74.1	73.4	-60.04	-3,545.5	-662.2	393.7	266.7	126.99	3.100				
12,450.0	8,579.0	12,229.0	8,381.3	75.0	74.3	-60.03	-3,595.5	-662.9	393.7	265.1	128.64	3.061				
12,500.0	8,578.9	12,279.0	8,381.2	75.9	75.2	-60.03	-3,645.5	-663.7	393.7	263.4	130.29	3.022				
12,550.0	8,578.8	12,329.0	8,381.0	76.9	76.2	-60.02	-3,695.5	-664.4	393.7	261.8	131.94	2.984				
12,600.0	8,578.7	12,379.0	8,380.9	77.8	77.1	-60.01	-3,745.5	-665.2	393.8	260.2	133.59	2.948				
12,650.0	8,578.7	12,429.0	8,380.8	78.7	78.0	-60.00	-3,795.5	-665.9	393.8	258.5	135.24	2.912				

CC - Min centre to center distance or convergent point, SF - min separation factor, ES - min ellipse separation

Company:	Clear Creek Resource Partners	Local Co-ordinate Reference:	Well True Ranch Fee 503-2326H
Project:	SEC.23-T15N-R65W	TVD Reference:	WELL @ 5881.0ft (Original Well Elev)
Reference Site:	True Ranch Fee 2326H East Pad Sec.23-T15N-R65W	MD Reference:	WELL @ 5881.0ft (Original Well Elev)
Site Error:	0.0 ft	North Reference:	True
Reference Well:	True Ranch Fee 503-2326H	Survey Calculation Method:	Minimum Curvature
Well Error:	0.0 ft	Output errors are at	2.00 sigma
Reference Wellbore	Wellbore #1	Database:	US_EDM
Reference Design:	Plan #1 (1-29-18)	Offset TVD Reference:	Offset Datum

Offset Design				True Ranch Fee 2326H East Pad Sec.23-T15N-R65W - True Ranch Fee 203-2326H - Wellbore #1 - Pla										Offset Site Error:		0.0 ft
Survey Program: 0-MWD														Offset Well Error:		0.0 ft
Reference		Offset		Semi Major Axis			Distance							Warning		
Measured Depth (ft)	Vertical Depth (ft)	Measured Depth (ft)	Vertical Depth (ft)	Reference (ft)	Offset (ft)	Highside Toolface (°)	Offset Wellbore Centre +N/-S (ft)	+E/-W (ft)	Between Centres (ft)	Between Ellipses (ft)	Minimum Separation (ft)	Separation Factor				
12,700.0	8,578.6	12,479.0	8,380.7	79.6	79.0	-60.00	-3,845.5	-666.7	393.8	256.9	136.90	2.877				
12,750.0	8,578.5	12,529.0	8,380.5	80.5	79.9	-59.99	-3,895.5	-667.4	393.8	255.3	138.55	2.842				
12,800.0	8,578.4	12,579.0	8,380.4	81.5	80.8	-59.98	-3,945.5	-668.2	393.8	253.6	140.21	2.809				
12,850.0	8,578.4	12,629.0	8,380.3	82.4	81.7	-59.97	-3,995.5	-668.9	393.8	252.0	141.87	2.776				
12,900.0	8,578.3	12,679.0	8,380.1	83.3	82.7	-59.96	-4,045.5	-669.7	393.9	250.3	143.52	2.744				
12,950.0	8,578.2	12,729.0	8,380.0	84.2	83.6	-59.96	-4,095.5	-670.4	393.9	248.7	145.18	2.713				
13,000.0	8,578.1	12,779.0	8,379.9	85.1	84.5	-59.95	-4,145.4	-671.1	393.9	247.0	146.84	2.682				
13,050.0	8,578.0	12,829.0	8,379.7	86.1	85.5	-59.94	-4,195.4	-671.9	393.9	245.4	148.50	2.653				
13,100.0	8,578.0	12,879.0	8,379.6	87.0	86.4	-59.93	-4,245.4	-672.6	393.9	243.8	150.16	2.623				
13,150.0	8,577.9	12,929.0	8,379.5	87.9	87.3	-59.93	-4,295.4	-673.4	393.9	242.1	151.82	2.595				
13,200.0	8,577.8	12,979.0	8,379.4	88.9	88.3	-59.92	-4,345.4	-674.1	393.9	240.5	153.48	2.567				
13,250.0	8,577.7	13,029.0	8,379.2	89.8	89.2	-59.91	-4,395.4	-674.9	394.0	238.8	155.14	2.539				
13,300.0	8,577.7	13,079.0	8,379.1	90.7	90.2	-59.90	-4,445.4	-675.6	394.0	237.2	156.81	2.512				
13,350.0	8,577.6	13,129.0	8,379.0	91.6	91.1	-59.89	-4,495.4	-676.4	394.0	235.5	158.47	2.486				
13,400.0	8,577.5	13,179.0	8,378.8	92.6	92.0	-59.89	-4,545.4	-677.1	394.0	233.9	160.13	2.460				
13,450.0	8,577.4	13,229.0	8,378.7	93.5	93.0	-59.88	-4,595.4	-677.9	394.0	232.2	161.80	2.435				
13,500.0	8,577.4	13,279.0	8,378.6	94.4	93.9	-59.87	-4,645.4	-678.6	394.0	230.6	163.46	2.411				
13,550.0	8,577.3	13,329.0	8,378.5	95.4	94.8	-59.86	-4,695.4	-679.3	394.0	228.9	165.13	2.386				
13,600.0	8,577.2	13,379.0	8,378.3	96.3	95.8	-59.85	-4,745.4	-680.1	394.1	227.3	166.79	2.363				
13,650.0	8,577.1	13,429.0	8,378.2	97.2	96.7	-59.85	-4,795.4	-680.8	394.1	225.6	168.46	2.339				
13,700.0	8,577.1	13,479.0	8,378.1	98.2	97.7	-59.84	-4,845.4	-681.6	394.1	224.0	170.12	2.316				
13,750.0	8,577.0	13,529.0	8,377.9	99.1	98.6	-59.83	-4,895.4	-682.3	394.1	222.3	171.79	2.294				
13,800.0	8,576.9	13,579.0	8,377.8	100.0	99.6	-59.82	-4,945.4	-683.1	394.1	220.7	173.46	2.272				
13,850.0	8,576.8	13,629.0	8,377.7	101.0	100.5	-59.82	-4,995.4	-683.8	394.1	219.0	175.13	2.251				
13,900.0	8,576.8	13,679.0	8,377.5	101.9	101.4	-59.81	-5,045.3	-684.6	394.1	217.4	176.79	2.229				
13,950.0	8,576.7	13,729.0	8,377.4	102.8	102.4	-59.80	-5,095.3	-685.3	394.2	215.7	178.46	2.209				
14,000.0	8,576.6	13,779.0	8,377.3	103.8	103.3	-59.79	-5,145.3	-686.1	394.2	214.0	180.13	2.188				
14,050.0	8,576.5	13,829.0	8,377.2	104.7	104.3	-59.78	-5,195.3	-686.8	394.2	212.4	181.80	2.168				
14,100.0	8,576.5	13,879.0	8,377.0	105.7	105.2	-59.78	-5,245.3	-687.5	394.2	210.7	183.47	2.149				
14,150.0	8,576.4	13,929.0	8,376.9	106.6	106.2	-59.77	-5,295.3	-688.3	394.2	209.1	185.14	2.129				
14,200.0	8,576.3	13,979.0	8,376.8	107.5	107.1	-59.76	-5,345.3	-689.0	394.2	207.4	186.81	2.110				
14,250.0	8,576.2	14,029.0	8,376.6	108.5	108.0	-59.75	-5,395.3	-689.8	394.3	205.8	188.48	2.092				
14,300.0	8,576.2	14,079.0	8,376.5	109.4	109.0	-59.75	-5,445.3	-690.5	394.3	204.1	190.15	2.073				
14,350.0	8,576.1	14,129.0	8,376.4	110.4	109.9	-59.74	-5,495.3	-691.3	394.3	202.5	191.82	2.056				
14,400.0	8,576.0	14,179.0	8,376.3	111.3	110.9	-59.73	-5,545.3	-692.0	394.3	200.8	193.49	2.038				
14,450.0	8,575.9	14,229.0	8,376.1	112.2	111.8	-59.72	-5,595.3	-692.8	394.3	199.2	195.16	2.020				
14,500.0	8,575.9	14,279.0	8,376.0	113.2	112.8	-59.71	-5,645.3	-693.5	394.3	197.5	196.83	2.003				
14,550.0	8,575.8	14,329.0	8,375.9	114.1	113.7	-59.71	-5,695.3	-694.3	394.3	195.8	198.50	1.987				
14,600.0	8,575.7	14,379.0	8,375.7	115.1	114.7	-59.70	-5,745.3	-695.0	394.4	194.2	200.17	1.970				
14,650.0	8,575.6	14,429.0	8,375.6	116.0	115.6	-59.69	-5,795.3	-695.7	394.4	192.5	201.84	1.954				
14,700.0	8,575.6	14,479.0	8,375.5	116.9	116.6	-59.68	-5,845.3	-696.5	394.4	190.9	203.51	1.938				
14,750.0	8,575.5	14,529.0	8,375.4	117.9	117.5	-59.68	-5,895.2	-697.2	394.4	189.2	205.18	1.922				
14,800.0	8,575.4	14,579.0	8,375.2	118.8	118.5	-59.67	-5,945.2	-698.0	394.4	187.6	206.85	1.907				
14,850.0	8,575.3	14,629.0	8,375.1	119.8	119.4	-59.66	-5,995.2	-698.7	394.4	185.9	208.53	1.892				
14,900.0	8,575.3	14,679.0	8,375.0	120.7	120.4	-59.65	-6,045.2	-699.5	394.4	184.2	210.20	1.877				
14,950.0	8,575.2	14,729.0	8,374.8	121.7	121.3	-59.64	-6,095.2	-700.2	394.5	182.6	211.87	1.862				
15,000.0	8,575.1	14,779.0	8,374.7	122.6	122.3	-59.64	-6,145.2	-701.0	394.5	180.9	213.54	1.847				
15,050.0	8,575.0	14,829.0	8,374.6	123.6	123.2	-59.63	-6,195.2	-701.7	394.5	179.3	215.21	1.833				
15,100.0	8,575.0	14,879.0	8,374.4	124.5	124.2	-59.62	-6,245.2	-702.4	394.5	177.6	216.88	1.819				
15,150.0	8,574.9	14,929.0	8,374.3	125.4	125.1	-59.61	-6,295.2	-703.2	394.5	176.0	218.56	1.805				
15,200.0	8,574.8	14,979.0	8,374.2	126.4	126.1	-59.61	-6,345.2	-703.9	394.5	174.3	220.23	1.791				

CC - Min centre to center distance or convergent point, SF - min separation factor, ES - min ellipse separation

Company:	Clear Creek Resource Partners	Local Co-ordinate Reference:	Well True Ranch Fee 503-2326H
Project:	SEC.23-T15N-R65W	TVD Reference:	WELL @ 5881.0ft (Original Well Elev)
Reference Site:	True Ranch Fee 2326H East Pad Sec.23-T15N-R65W	MD Reference:	WELL @ 5881.0ft (Original Well Elev)
Site Error:	0.0 ft	North Reference:	True
Reference Well:	True Ranch Fee 503-2326H	Survey Calculation Method:	Minimum Curvature
Well Error:	0.0 ft	Output errors are at	2.00 sigma
Reference Wellbore	Wellbore #1	Database:	US_EDM
Reference Design:	Plan #1 (1-29-18)	Offset TVD Reference:	Offset Datum

Offset Design True Ranch Fee 2326H East Pad Sec.23-T15N-R65W - True Ranch Fee 203-2326H - Wellbore #1 - Pla													Offset Site Error:	0.0 ft
Survey Program: 0-MWD													Offset Well Error:	0.0 ft
Reference		Offset		Semi Major Axis			Distance							Warning
Measured Depth (ft)	Vertical Depth (ft)	Measured Depth (ft)	Vertical Depth (ft)	Reference (ft)	Offset (ft)	Highside Toolface (°)	Offset Wellbore Centre +N/-S (ft)	+E/-W (ft)	Between Centres (ft)	Between Ellipses (ft)	Minimum Separation (ft)	Separation Factor		
15,250.0	8,574.7	15,029.0	8,374.1	127.3	127.0	-59.60	-6,395.2	-704.7	394.6	172.6	221.90	1.778		
15,300.0	8,574.7	15,079.0	8,373.9	128.3	128.0	-59.59	-6,445.2	-705.4	394.6	171.0	223.57	1.765		
15,350.0	8,574.6	15,129.0	8,373.8	129.2	128.9	-59.58	-6,495.2	-706.2	394.6	169.3	225.24	1.752		
15,400.0	8,574.5	15,179.0	8,373.7	130.2	129.9	-59.57	-6,545.2	-706.9	394.6	167.7	226.92	1.739		
15,450.0	8,574.4	15,229.0	8,373.5	131.1	130.8	-59.57	-6,595.2	-707.7	394.6	166.0	228.59	1.726		
15,500.0	8,574.4	15,279.0	8,373.4	132.1	131.8	-59.56	-6,645.2	-708.4	394.6	164.4	230.26	1.714		
15,550.0	8,574.3	15,329.0	8,373.3	133.0	132.7	-59.55	-6,695.2	-709.2	394.6	162.7	231.93	1.702		
15,600.0	8,574.2	15,379.0	8,373.2	134.0	133.7	-59.54	-6,745.1	-709.9	394.7	161.0	233.61	1.689		
15,650.0	8,574.1	15,429.0	8,373.0	134.9	134.6	-59.53	-6,795.1	-710.6	394.7	159.4	235.28	1.677		
15,700.0	8,574.0	15,479.0	8,372.9	135.9	135.6	-59.53	-6,845.1	-711.4	394.7	157.7	236.95	1.666		
15,750.0	8,574.0	15,529.0	8,372.8	136.8	136.5	-59.52	-6,895.1	-712.1	394.7	156.1	238.62	1.654		
15,800.0	8,573.9	15,579.0	8,372.6	137.8	137.5	-59.51	-6,945.1	-712.9	394.7	154.4	240.29	1.643		
15,850.0	8,573.8	15,629.0	8,372.5	138.7	138.4	-59.50	-6,995.1	-713.6	394.7	152.8	241.97	1.631		
15,900.0	8,573.7	15,679.0	8,372.4	139.7	139.4	-59.50	-7,045.1	-714.4	394.7	151.1	243.64	1.620		
15,950.0	8,573.7	15,729.0	8,372.2	140.6	140.3	-59.49	-7,095.1	-715.1	394.8	149.4	245.31	1.609		
16,000.0	8,573.6	15,779.0	8,372.1	141.6	141.3	-59.48	-7,145.1	-715.9	394.8	147.8	246.98	1.598		
16,050.0	8,573.5	15,829.0	8,372.0	142.5	142.2	-59.47	-7,195.1	-716.6	394.8	146.1	248.66	1.588		
16,100.0	8,573.4	15,879.0	8,371.9	143.5	143.2	-59.46	-7,245.1	-717.4	394.8	144.5	250.33	1.577		
16,150.0	8,573.4	15,929.0	8,371.7	144.4	144.1	-59.46	-7,295.1	-718.1	394.8	142.8	252.00	1.567		
16,200.0	8,573.3	15,979.0	8,371.6	145.4	145.1	-59.45	-7,345.1	-718.8	394.8	141.2	253.67	1.556		
16,250.0	8,573.2	16,029.0	8,371.5	146.3	146.0	-59.44	-7,395.1	-719.6	394.9	139.5	255.34	1.546		
16,300.0	8,573.1	16,079.0	8,371.3	147.3	147.0	-59.43	-7,445.1	-720.3	394.9	137.9	257.02	1.536		
16,350.0	8,573.1	16,129.0	8,371.2	148.2	148.0	-59.43	-7,495.1	-721.1	394.9	136.2	258.69	1.526		
16,400.0	8,573.0	16,179.0	8,371.1	149.2	148.9	-59.42	-7,545.1	-721.8	394.9	134.5	260.36	1.517		
16,450.0	8,572.9	16,229.0	8,371.0	150.1	149.9	-59.41	-7,595.1	-722.6	394.9	132.9	262.03	1.507		
16,500.0	8,572.8	16,279.0	8,370.8	151.1	150.8	-59.40	-7,645.0	-723.3	394.9	131.2	263.70	1.498 Level 3		
16,550.0	8,572.8	16,329.0	8,370.7	152.0	151.8	-59.39	-7,695.0	-724.1	394.9	129.6	265.38	1.488 Level 3		
16,600.0	8,572.7	16,379.0	8,370.6	153.0	152.7	-59.39	-7,745.0	-724.8	395.0	127.9	267.05	1.479 Level 3		
16,650.0	8,572.6	16,429.0	8,370.4	153.9	153.7	-59.38	-7,795.0	-725.6	395.0	126.3	268.72	1.470 Level 3		
16,700.0	8,572.5	16,479.0	8,370.3	154.9	154.6	-59.37	-7,845.0	-726.3	395.0	124.6	270.39	1.461 Level 3		
16,750.0	8,572.5	16,529.0	8,370.2	155.8	155.6	-59.36	-7,895.0	-727.0	395.0	122.9	272.06	1.452 Level 3		
16,800.0	8,572.4	16,579.0	8,370.0	156.8	156.5	-59.36	-7,945.0	-727.8	395.0	121.3	273.73	1.443 Level 3		
16,850.0	8,572.3	16,629.0	8,369.9	157.7	157.5	-59.35	-7,995.0	-728.5	395.0	119.6	275.40	1.434 Level 3		
16,900.0	8,572.2	16,679.0	8,369.8	158.7	158.5	-59.34	-8,045.0	-729.3	395.1	118.0	277.07	1.426 Level 3		
16,950.0	8,572.2	16,729.0	8,369.7	159.6	159.4	-59.33	-8,095.0	-730.0	395.1	116.3	278.75	1.417 Level 3		
17,000.0	8,572.1	16,779.0	8,369.5	160.6	160.4	-59.32	-8,145.0	-730.8	395.1	114.7	280.42	1.409 Level 3		
17,050.0	8,572.0	16,829.0	8,369.4	161.5	161.3	-59.32	-8,195.0	-731.5	395.1	113.0	282.09	1.401 Level 3		
17,100.0	8,571.9	16,879.0	8,369.3	162.5	162.3	-59.31	-8,245.0	-732.3	395.1	111.4	283.76	1.392 Level 3		
17,150.0	8,571.9	16,929.0	8,369.1	163.4	163.2	-59.30	-8,295.0	-733.0	395.1	109.7	285.43	1.384 Level 3		
17,200.0	8,571.8	16,979.0	8,369.0	164.4	164.2	-59.29	-8,345.0	-733.8	395.1	108.0	287.10	1.376 Level 3		
17,250.0	8,571.7	17,029.0	8,368.9	165.3	165.1	-59.29	-8,395.0	-734.5	395.2	106.4	288.77	1.368 Level 3		
17,300.0	8,571.6	17,079.0	8,368.8	166.3	166.1	-59.28	-8,445.0	-735.2	395.2	104.7	290.44	1.361 Level 3		
17,350.0	8,571.6	17,129.0	8,368.6	167.3	167.1	-59.27	-8,494.9	-736.0	395.2	103.1	292.11	1.353 Level 3		
17,400.0	8,571.5	17,179.0	8,368.5	168.2	168.0	-59.26	-8,544.9	-736.7	395.2	101.4	293.78	1.345 Level 3		
17,450.0	8,571.4	17,229.0	8,368.4	169.2	169.0	-59.25	-8,594.9	-737.5	395.2	99.8	295.45	1.338 Level 3		
17,500.0	8,571.3	17,279.0	8,368.2	170.1	169.9	-59.25	-8,644.9	-738.2	395.2	98.1	297.12	1.330 Level 3		
17,550.0	8,571.3	17,329.0	8,368.1	171.1	170.9	-59.24	-8,694.9	-739.0	395.2	96.5	298.79	1.323 Level 3		
17,600.0	8,571.2	17,379.0	8,368.0	172.0	171.8	-59.23	-8,744.9	-739.7	395.3	94.8	300.46	1.316 Level 3		
17,650.0	8,571.1	17,429.0	8,367.8	173.0	172.8	-59.22	-8,794.9	-740.5	395.3	93.2	302.13	1.308 Level 3		
17,700.0	8,571.0	17,479.0	8,367.7	173.9	173.7	-59.22	-8,844.9	-741.2	395.3	91.5	303.80	1.301 Level 3		
17,750.0	8,571.0	17,529.0	8,367.6	174.9	174.7	-59.21	-8,894.9	-742.0	395.3	89.8	305.47	1.294 Level 3		

CC - Min centre to center distance or convergent point, SF - min separation factor, ES - min ellipse separation

Company:	Clear Creek Resource Partners	Local Co-ordinate Reference:	Well True Ranch Fee 503-2326H
Project:	SEC.23-T15N-R65W	TVD Reference:	WELL @ 5881.0ft (Original Well Elev)
Reference Site:	True Ranch Fee 2326H East Pad Sec.23-T15N-R65W	MD Reference:	WELL @ 5881.0ft (Original Well Elev)
Site Error:	0.0 ft	North Reference:	True
Reference Well:	True Ranch Fee 503-2326H	Survey Calculation Method:	Minimum Curvature
Well Error:	0.0 ft	Output errors are at	2.00 sigma
Reference Wellbore	Wellbore #1	Database:	US_EDM
Reference Design:	Plan #1 (1-29-18)	Offset TVD Reference:	Offset Datum

Offset Design													Offset Site Error:	0.0 ft
Survey Program: 0-MWD													Offset Well Error:	0.0 ft
Reference														
Offset														
Semi Major Axis														
Distance														
Measured Depth (ft)	Vertical Depth (ft)	Measured Depth (ft)	Vertical Depth (ft)	Reference (ft)	Offset (ft)	Highside Toolface (°)	Offset Wellbore Centre +N/-S (ft)	+E/-W (ft)	Between Centres (ft)	Between Ellipses (ft)	Minimum Separation (ft)	Separation Factor	Warning	
17,800.0	8,570.9	17,579.0	8,367.5	175.8	175.7	-59.20	-8,944.9	-742.7	395.3	88.2	307.14	1.287	Level 3	
17,850.0	8,570.8	17,629.0	8,367.3	176.8	176.6	-59.19	-8,994.9	-743.4	395.3	86.5	308.81	1.280	Level 3	
17,900.0	8,570.7	17,679.0	8,367.2	177.8	177.6	-59.19	-9,044.9	-744.2	395.4	84.9	310.48	1.273	Level 3	
17,950.0	8,570.7	17,729.0	8,367.1	178.7	178.5	-59.18	-9,094.9	-744.9	395.4	83.2	312.14	1.267	Level 3	
18,000.0	8,570.6	17,779.0	8,366.9	179.7	179.5	-59.17	-9,144.9	-745.7	395.4	81.6	313.81	1.260	Level 3	
18,050.0	8,570.5	17,829.0	8,366.8	180.6	180.4	-59.16	-9,194.9	-746.4	395.4	79.9	315.48	1.253	Level 3	
18,100.0	8,570.4	17,879.0	8,366.7	181.6	181.4	-59.15	-9,244.9	-747.2	395.4	78.3	317.15	1.247	Level 2	
18,150.0	8,570.4	17,929.0	8,366.6	182.5	182.4	-59.15	-9,294.9	-747.9	395.4	76.6	318.82	1.240	Level 2	
18,200.0	8,570.3	17,979.0	8,366.4	183.5	183.3	-59.14	-9,344.8	-748.7	395.5	75.0	320.49	1.234	Level 2	
18,250.0	8,570.2	18,029.0	8,366.3	184.4	184.3	-59.13	-9,394.8	-749.4	395.5	73.3	322.15	1.228	Level 2	
18,300.0	8,570.1	18,079.0	8,366.2	185.4	185.2	-59.12	-9,444.8	-750.2	395.5	71.7	323.82	1.221	Level 2	
18,350.0	8,570.1	18,129.0	8,366.0	186.3	186.2	-59.12	-9,494.8	-750.9	395.5	70.0	325.49	1.215	Level 2	
18,352.8	8,570.0	18,131.8	8,366.0	186.4	186.2	-59.11	-9,497.6	-750.9	395.5	69.9	325.58	1.215	Level 2	
18,384.3	8,570.0	18,144.5	8,366.0	187.0	186.5	-59.11	-9,510.3	-751.1	396.0	69.6	326.32	1.213	Level 2, SF	

Company:	Clear Creek Resource Partners	Local Co-ordinate Reference:	Well True Ranch Fee 503-2326H
Project:	SEC.23-T15N-R65W	TVD Reference:	WELL @ 5881.0ft (Original Well Elev)
Reference Site:	True Ranch Fee 2326H East Pad Sec.23-T15N-R65W	MD Reference:	WELL @ 5881.0ft (Original Well Elev)
Site Error:	0.0 ft	North Reference:	True
Reference Well:	True Ranch Fee 503-2326H	Survey Calculation Method:	Minimum Curvature
Well Error:	0.0 ft	Output errors are at	2.00 sigma
Reference Wellbore	Wellbore #1	Database:	US_EDM
Reference Design:	Plan #1 (1-29-18)	Offset TVD Reference:	Offset Datum

Offset Design													Offset Site Error:	0.0 ft
Survey Program: 0-MWD													Offset Well Error:	0.0 ft
Reference		Offset		Semi Major Axis			Distance						Warning	
Measured Depth (ft)	Vertical Depth (ft)	Measured Depth (ft)	Vertical Depth (ft)	Reference (ft)	Offset (ft)	Highside Toolface (°)	Offset Wellbore Centre +N/-S (ft)	+E/-W (ft)	Between Centres (ft)	Between Ellipses (ft)	Minimum Separation (ft)	Separation Factor		
0.0	0.0	1.0	1.0	0.0	0.0	-90.00	0.0	-30.4	30.4	30.4	0.00	N/A		
50.0	50.0	51.0	51.0	0.1	0.1	-90.00	0.0	-30.4	30.4	30.3	0.11	267.280		
100.0	100.0	101.0	101.0	0.1	0.1	-90.00	0.0	-30.4	30.4	30.1	0.23	133.756		
150.0	150.0	151.0	151.0	0.2	0.2	-90.00	0.0	-30.4	30.4	29.9	0.45	67.211		
200.0	200.0	201.0	201.0	0.3	0.3	-90.00	0.0	-30.4	30.4	29.7	0.68	44.881		
250.0	250.0	251.0	251.0	0.4	0.5	-90.00	0.0	-30.4	30.4	29.5	0.90	33.689		
300.0	300.0	301.0	301.0	0.6	0.6	-90.00	0.0	-30.4	30.4	29.2	1.13	26.965		
350.0	350.0	351.0	351.0	0.7	0.7	-90.00	0.0	-30.4	30.4	29.0	1.35	22.478		
383.0	383.0	384.0	384.0	0.7	0.8	-90.00	0.0	-30.4	30.4	28.9	1.50	20.254 CC		
400.0	400.0	401.0	401.0	0.8	0.8	-90.00	0.0	-30.4	30.4	28.8	1.58	19.273 ES		
450.0	450.0	450.6	450.6	0.9	0.9	-89.78	0.1	-30.7	30.7	28.9	1.80	17.086		
500.0	500.0	500.0	500.0	1.0	1.0	-89.18	0.5	-31.6	31.6	29.6	2.02	15.685		
550.0	550.0	549.8	549.8	1.1	1.1	-88.25	1.0	-33.1	33.2	30.9	2.24	14.828		
600.0	600.0	599.3	599.2	1.2	1.2	-87.09	1.8	-35.2	35.3	32.9	2.46	14.384		
650.0	650.0	648.8	648.6	1.3	1.3	-22.40	2.8	-38.0	37.8	35.2	2.67	14.162		
700.0	700.0	698.3	697.9	1.5	1.4	-21.52	4.0	-41.3	40.4	37.5	2.89	13.972		
750.0	750.0	747.7	747.2	1.6	1.6	-20.83	5.5	-45.2	42.9	39.8	3.11	13.808		
800.0	799.9	797.0	796.3	1.7	1.7	-20.30	7.1	-49.7	45.5	42.2	3.33	13.675		
850.0	849.8	846.4	845.4	1.8	1.8	-19.91	9.0	-54.8	48.1	44.6	3.55	13.542		
900.0	899.7	895.7	894.3	1.9	2.0	-19.64	11.1	-60.5	50.7	46.9	3.78	13.432		
950.0	949.5	945.0	943.1	2.0	2.1	-19.47	13.4	-66.8	53.3	49.3	4.00	13.317		
1,000.0	999.3	994.2	991.8	2.1	2.3	-19.39	15.9	-73.7	56.0	51.7	4.23	13.222		
1,050.0	1,049.0	1,043.4	1,040.4	2.3	2.4	-19.38	18.7	-81.1	58.6	54.1	4.47	13.119		
1,100.0	1,098.6	1,092.6	1,088.8	2.4	2.6	-19.43	21.6	-89.1	61.2	56.5	4.70	13.031		
1,150.0	1,148.1	1,141.8	1,137.1	2.6	2.8	-19.54	24.8	-97.7	63.9	59.0	4.94	12.933		
1,200.0	1,197.5	1,190.9	1,185.2	2.7	3.0	-19.70	28.2	-106.9	66.6	61.4	5.18	12.849		
1,250.0	1,246.9	1,240.0	1,233.2	2.9	3.2	-19.91	31.7	-116.7	69.2	63.8	5.43	12.752		
1,300.0	1,296.1	1,289.0	1,281.0	3.0	3.4	-20.15	35.5	-127.0	71.9	66.3	5.68	12.666		
1,350.0	1,345.2	1,338.0	1,328.6	3.2	3.6	-20.43	39.5	-137.9	74.6	68.7	5.94	12.567		
1,400.0	1,394.2	1,387.0	1,376.0	3.4	3.8	-20.73	43.8	-149.4	77.3	71.1	6.20	12.477		
1,450.0	1,443.0	1,435.9	1,423.3	3.6	4.1	-21.07	48.2	-161.4	80.1	73.6	6.47	12.379		
1,500.0	1,491.8	1,485.7	1,471.2	3.8	4.3	-21.41	52.8	-174.0	82.8	76.1	6.75	12.282		
1,550.0	1,540.5	1,535.6	1,519.3	4.0	4.6	-21.73	57.5	-186.7	85.7	78.6	7.03	12.186		
1,600.0	1,589.3	1,585.5	1,567.3	4.2	4.9	-22.03	62.1	-199.3	88.5	81.1	7.31	12.097		
1,650.0	1,638.0	1,635.4	1,615.4	4.4	5.1	-22.32	66.8	-212.0	91.3	83.7	7.60	12.008		
1,700.0	1,686.8	1,685.4	1,663.4	4.6	5.4	-22.58	71.4	-224.6	94.1	86.2	7.90	11.912		
1,750.0	1,735.6	1,735.3	1,711.5	4.9	5.7	-22.83	76.1	-237.3	96.9	88.7	8.20	11.824		
1,800.0	1,784.3	1,785.2	1,759.6	5.1	6.0	-23.07	80.7	-249.9	99.7	91.2	8.50	11.738		
1,850.0	1,833.1	1,835.1	1,807.6	5.3	6.2	-23.29	85.4	-262.6	102.5	93.7	8.80	11.653		
1,900.0	1,881.8	1,885.0	1,855.7	5.5	6.5	-23.50	90.0	-275.2	105.4	96.2	9.10	11.573		
1,950.0	1,930.6	1,935.0	1,903.8	5.8	6.8	-23.70	94.7	-287.9	108.2	98.8	9.41	11.494		
2,000.0	1,979.4	1,984.9	1,951.8	6.0	7.1	-23.89	99.3	-300.5	111.0	101.3	9.72	11.418		
2,050.0	2,028.1	2,034.8	1,999.9	6.2	7.4	-24.07	104.0	-313.2	113.8	103.8	10.03	11.345		
2,100.0	2,076.9	2,084.7	2,048.0	6.5	7.6	-24.25	108.6	-325.8	116.6	106.3	10.35	11.274		
2,150.0	2,125.6	2,134.6	2,096.0	6.7	7.9	-24.41	113.3	-338.5	119.5	108.8	10.66	11.205		
2,200.0	2,174.4	2,184.6	2,144.1	6.9	8.2	-24.57	117.9	-351.1	122.3	111.3	10.98	11.140		
2,250.0	2,223.2	2,234.5	2,192.2	7.2	8.5	-24.72	122.6	-363.8	125.1	113.8	11.30	11.076		
2,300.0	2,271.9	2,284.4	2,240.2	7.4	8.8	-24.86	127.2	-376.4	127.9	116.3	11.62	11.015		
2,350.0	2,320.7	2,334.3	2,288.3	7.6	9.1	-24.99	131.9	-389.1	130.8	118.8	11.94	10.955		
2,400.0	2,369.4	2,384.2	2,336.4	7.9	9.3	-25.12	136.6	-401.7	133.6	121.3	12.26	10.898		
2,450.0	2,418.2	2,434.1	2,384.4	8.1	9.6	-25.25	141.2	-414.4	136.4	123.9	12.58	10.843		

CC - Min centre to center distance or convergent point, SF - min separation factor, ES - min ellipse separation

Company:	Clear Creek Resource Partners	Local Co-ordinate Reference:	Well True Ranch Fee 503-2326H
Project:	SEC.23-T15N-R65W	TVD Reference:	WELL @ 5881.0ft (Original Well Elev)
Reference Site:	True Ranch Fee 2326H East Pad Sec.23-T15N-R65W	MD Reference:	WELL @ 5881.0ft (Original Well Elev)
Site Error:	0.0 ft	North Reference:	True
Reference Well:	True Ranch Fee 503-2326H	Survey Calculation Method:	Minimum Curvature
Well Error:	0.0 ft	Output errors are at	2.00 sigma
Reference Wellbore	Wellbore #1	Database:	US_EDM
Reference Design:	Plan #1 (1-29-18)	Offset TVD Reference:	Offset Datum

Offset Design		True Ranch Fee 2326H East Pad Sec.23-T15N-R65W - True Ranch Fee 204-2326H - Wellbore #1 - Pla											Offset Site Error:		0.0 ft
Survey Program:		0-MWD											Offset Well Error:		0.0 ft
Reference		Offset		Semi Major Axis			Distance								
Measured Depth	Vertical	Measured	Vertical	Reference	Offset	Highside	Offset Wellbore Centre		Between	Between	Minimum	Separation	Warning		
Depth (ft)	Depth (ft)	Depth (ft)	Depth (ft)	(ft)	(ft)	Toolface (°)	+N/-S (ft)	+E/-W (ft)	Centres (ft)	Ellipses (ft)	Separation (ft)	Factor			
2,500.0	2,467.0	2,484.1	2,432.5	8.3	9.9	-25.37	145.9	-427.0	139.3	126.4	12.91	10.790			
2,550.0	2,515.7	2,534.0	2,480.5	8.6	10.2	-25.49	150.5	-439.7	142.1	128.9	13.23	10.739			
2,600.0	2,564.5	2,583.9	2,528.6	8.8	10.5	-25.60	155.2	-452.3	144.9	131.4	13.56	10.689			
2,650.0	2,613.3	2,633.8	2,576.7	9.0	10.8	-25.70	159.8	-465.0	147.8	133.9	13.89	10.641			
2,700.0	2,662.0	2,683.7	2,624.7	9.3	11.0	-25.81	164.5	-477.6	150.6	136.4	14.21	10.595			
2,750.0	2,710.8	2,733.7	2,672.8	9.5	11.3	-25.90	169.1	-490.3	153.4	138.9	14.54	10.550			
2,800.0	2,759.5	2,783.6	2,720.9	9.8	11.6	-26.00	173.8	-503.0	156.3	141.4	14.87	10.507			
2,850.0	2,808.3	2,833.5	2,768.9	10.0	11.9	-26.09	178.4	-515.6	159.1	143.9	15.20	10.465			
2,900.0	2,857.1	2,883.4	2,817.0	10.2	12.2	-26.18	183.1	-528.3	161.9	146.4	15.53	10.425			
2,950.0	2,905.8	2,933.3	2,865.1	10.5	12.5	-26.26	187.7	-540.9	164.8	148.9	15.86	10.386			
3,000.0	2,954.6	2,983.3	2,913.1	10.7	12.8	-26.35	192.4	-553.6	167.6	151.4	16.20	10.348			
3,050.0	3,003.3	3,033.2	2,961.2	10.9	13.1	-26.43	197.0	-566.2	170.4	153.9	16.53	10.311			
3,100.0	3,052.1	3,083.1	3,009.3	11.2	13.3	-26.50	201.7	-578.9	173.3	156.4	16.86	10.276			
3,150.0	3,100.9	3,133.0	3,057.3	11.4	13.6	-26.58	206.3	-591.5	176.1	158.9	17.20	10.241			
3,200.0	3,149.6	3,182.9	3,105.4	11.7	13.9	-26.65	211.0	-604.2	178.9	161.4	17.53	10.208			
3,250.0	3,198.4	3,232.9	3,153.4	11.9	14.2	-26.72	215.6	-616.8	181.8	163.9	17.86	10.175			
3,300.0	3,247.1	3,282.8	3,201.5	12.1	14.5	-26.79	220.3	-629.5	184.6	166.4	18.20	10.144			
3,350.0	3,295.9	3,332.7	3,249.6	12.4	14.8	-26.86	224.9	-642.1	187.4	168.9	18.53	10.113			
3,400.0	3,344.7	3,382.6	3,297.6	12.6	15.1	-26.92	229.6	-654.8	190.3	171.4	18.87	10.084			
3,450.0	3,393.4	3,432.5	3,345.7	12.9	15.4	-26.98	234.2	-667.4	193.1	173.9	19.21	10.055			
3,500.0	3,442.2	3,482.4	3,393.8	13.1	15.6	-27.04	238.9	-680.1	196.0	176.4	19.54	10.027			
3,550.0	3,490.9	3,532.4	3,441.8	13.3	15.9	-27.10	243.5	-692.7	198.8	178.9	19.88	10.000			
3,600.0	3,539.7	3,582.3	3,489.9	13.6	16.2	-27.16	248.2	-705.4	201.6	181.4	20.22	9.973			
3,650.0	3,588.5	3,632.2	3,538.0	13.8	16.5	-27.21	252.9	-718.0	204.5	183.9	20.55	9.948			
3,700.0	3,637.2	3,682.1	3,586.0	14.1	16.8	-27.27	257.5	-730.7	207.3	186.4	20.89	9.923			
3,750.0	3,686.0	3,732.0	3,634.1	14.3	17.1	-27.32	262.2	-743.3	210.1	188.9	21.23	9.898			
3,800.0	3,734.7	3,782.0	3,682.2	14.5	17.4	-27.37	266.8	-756.0	213.0	191.4	21.57	9.875			
3,850.0	3,783.5	3,831.9	3,730.2	14.8	17.7	-27.42	271.5	-768.6	215.8	193.9	21.91	9.852			
3,900.0	3,832.3	3,881.8	3,778.3	15.0	17.9	-27.47	276.1	-781.3	218.7	196.4	22.25	9.829			
3,950.0	3,881.0	3,931.7	3,826.4	15.3	18.2	-27.52	280.8	-793.9	221.5	198.9	22.59	9.807			
4,000.0	3,929.8	3,981.6	3,874.4	15.5	18.5	-27.56	285.4	-806.6	224.3	201.4	22.93	9.786			
4,050.0	3,978.5	4,031.6	3,922.5	15.7	18.8	-27.61	290.1	-819.2	227.2	203.9	23.26	9.765			
4,100.0	4,027.3	4,081.5	3,970.5	16.0	19.1	-27.65	294.7	-831.9	230.0	206.4	23.60	9.745			
4,150.0	4,076.1	4,131.4	4,018.6	16.2	19.4	-27.69	299.4	-844.6	232.9	208.9	23.94	9.725			
4,200.0	4,124.8	4,181.3	4,066.7	16.5	19.7	-27.73	304.0	-857.2	235.7	211.4	24.28	9.706			
4,250.0	4,173.6	4,231.2	4,114.7	16.7	20.0	-27.77	308.7	-869.9	238.5	213.9	24.63	9.687			
4,300.0	4,222.3	4,281.2	4,162.8	17.0	20.3	-27.81	313.3	-882.5	241.4	216.4	24.97	9.669			
4,350.0	4,271.1	4,331.1	4,210.9	17.2	20.5	-27.85	318.0	-895.2	244.2	218.9	25.31	9.651			
4,400.0	4,319.9	4,381.0	4,258.9	17.4	20.8	-27.89	322.6	-907.8	247.1	221.4	25.65	9.633			
4,450.0	4,368.6	4,430.9	4,307.0	17.7	21.1	-27.93	327.3	-920.5	249.9	223.9	25.99	9.616			
4,500.0	4,417.4	4,480.8	4,355.1	17.9	21.4	-27.96	331.9	-933.1	252.7	226.4	26.33	9.599			
4,550.0	4,466.1	4,530.7	4,403.1	18.2	21.7	-28.00	336.6	-945.8	255.6	228.9	26.67	9.583			
4,600.0	4,514.9	4,580.7	4,451.2	18.4	22.0	-28.03	341.2	-958.4	258.4	231.4	27.01	9.567			
4,650.0	4,563.7	4,630.6	4,499.3	18.6	22.3	-28.07	345.9	-971.1	261.3	233.9	27.35	9.551			
4,700.0	4,612.4	4,680.5	4,547.3	18.9	22.6	-28.10	350.5	-983.7	264.1	236.4	27.70	9.536			
4,750.0	4,661.2	4,730.4	4,595.4	19.1	22.9	-28.13	355.2	-996.4	267.0	238.9	28.04	9.521			
4,800.0	4,709.9	4,780.3	4,643.4	19.4	23.1	-28.16	359.9	-1,009.0	269.8	241.4	28.38	9.506			
4,850.0	4,758.7	4,830.3	4,691.5	19.6	23.4	-28.20	364.5	-1,021.7	272.6	243.9	28.72	9.492			
4,900.0	4,807.5	4,880.2	4,739.6	19.8	23.7	-28.23	369.2	-1,034.3	275.5	246.4	29.07	9.478			
4,950.0	4,856.2	4,930.1	4,787.6	20.1	24.0	-28.26	373.8	-1,047.0	278.3	248.9	29.41	9.464			
5,000.0	4,905.0	4,980.0	4,835.7	20.3	24.3	-28.28	378.5	-1,059.6	281.2	251.4	29.75	9.450			

CC - Min centre to center distance or convergent point, SF - min separation factor, ES - min ellipse separation

Company:	Clear Creek Resource Partners	Local Co-ordinate Reference:	Well True Ranch Fee 503-2326H
Project:	SEC.23-T15N-R65W	TVD Reference:	WELL @ 5881.0ft (Original Well Elev)
Reference Site:	True Ranch Fee 2326H East Pad Sec.23-T15N-R65W	MD Reference:	WELL @ 5881.0ft (Original Well Elev)
Site Error:	0.0 ft	North Reference:	True
Reference Well:	True Ranch Fee 503-2326H	Survey Calculation Method:	Minimum Curvature
Well Error:	0.0 ft	Output errors are at	2.00 sigma
Reference Wellbore	Wellbore #1	Database:	US_EDM
Reference Design:	Plan #1 (1-29-18)	Offset TVD Reference:	Offset Datum

Offset Design		True Ranch Fee 2326H East Pad Sec.23-T15N-R65W - True Ranch Fee 204-2326H - Wellbore #1 - Pla										Offset Site Error:		0.0 ft
Survey Program: 0-MWD												Offset Well Error:		0.0 ft
Reference		Offset		Semi Major Axis			Distance							Warning
Measured Depth (ft)	Vertical Depth (ft)	Measured Depth (ft)	Vertical Depth (ft)	Reference (ft)	Offset (ft)	Highside Toolface (°)	Offset Wellbore Centre +N/-S (ft)	+E/-W (ft)	Between Centres (ft)	Between Ellipses (ft)	Minimum Separation (ft)	Separation Factor		
5,050.0	4,953.7	5,029.9	4,883.8	20.6	24.6	-28.31	383.1	-1,072.3	284.0	253.9	30.09	9.437		
5,100.0	5,002.5	5,079.9	4,931.8	20.8	24.9	-28.34	387.8	-1,084.9	286.8	256.4	30.44	9.424		
5,150.0	5,051.3	5,129.8	4,979.9	21.1	25.2	-28.37	392.4	-1,097.6	289.7	258.9	30.78	9.412		
5,200.0	5,100.0	5,179.7	5,028.0	21.3	25.5	-28.40	397.1	-1,110.2	292.5	261.4	31.12	9.399		
5,250.0	5,148.8	5,229.6	5,076.0	21.5	25.8	-28.42	401.7	-1,122.9	295.4	263.9	31.47	9.387		
5,300.0	5,197.5	5,279.5	5,124.1	21.8	26.0	-28.45	406.4	-1,135.5	298.2	266.4	31.81	9.375		
5,350.0	5,246.3	5,329.5	5,172.2	22.0	26.3	-28.47	411.0	-1,148.2	301.0	268.9	32.15	9.363		
5,400.0	5,295.1	5,379.4	5,220.2	22.3	26.6	-28.50	415.7	-1,160.8	303.9	271.4	32.50	9.352		
5,450.0	5,343.8	5,434.1	5,273.0	22.5	26.9	-28.55	420.6	-1,174.3	306.4	273.6	32.84	9.330		
5,500.0	5,392.6	5,489.5	5,326.8	22.7	27.1	-28.68	425.3	-1,187.1	308.1	274.9	33.19	9.283		
5,550.0	5,441.6	5,545.0	5,380.8	22.9	27.3	-28.81	429.6	-1,198.8	309.7	276.2	33.50	9.243		
5,600.0	5,490.7	5,600.5	5,435.2	23.1	27.5	-28.93	433.6	-1,209.6	311.0	277.2	33.80	9.203		
5,650.0	5,540.0	5,656.1	5,489.7	23.2	27.7	-29.04	437.2	-1,219.4	312.3	278.3	34.07	9.168		
5,700.0	5,589.4	5,711.7	5,544.5	23.4	27.9	-29.14	440.4	-1,228.2	313.5	279.1	34.32	9.133		
5,750.0	5,638.9	5,767.3	5,599.5	23.5	28.0	-29.22	443.3	-1,236.0	314.5	279.9	34.55	9.102		
5,800.0	5,688.6	5,822.9	5,654.6	23.6	28.1	-29.29	445.8	-1,242.8	315.3	280.6	34.76	9.072		
5,850.0	5,738.3	5,878.5	5,709.9	23.7	28.3	-29.36	447.9	-1,248.5	316.1	281.1	34.94	9.045		
5,900.0	5,788.2	5,934.2	5,765.3	23.8	28.4	-29.41	449.7	-1,253.3	316.7	281.6	35.11	9.020		
5,950.0	5,838.1	5,989.8	5,820.8	23.9	28.5	-29.45	451.1	-1,257.1	317.2	281.9	35.25	8.997		
6,000.0	5,888.0	6,045.5	5,876.4	24.0	28.6	-29.48	452.1	-1,259.9	317.5	282.1	35.38	8.975		
6,050.0	5,938.0	6,101.2	5,932.1	24.0	28.6	-29.50	452.7	-1,261.6	317.7	282.3	35.48	8.955		
6,100.0	5,988.0	6,156.8	5,987.7	24.1	28.7	-29.51	453.0	-1,262.3	317.8	282.3	35.57	8.936		
6,150.0	6,038.0	6,208.1	6,039.0	24.2	28.7	-93.07	453.0	-1,262.4	317.8	281.8	35.97	8.835		
6,200.0	6,088.0	6,258.1	6,089.0	24.2	28.8	-93.07	453.0	-1,262.4	317.8	281.7	36.12	8.799		
6,250.0	6,138.0	6,308.1	6,139.0	24.3	28.8	-93.07	453.0	-1,262.4	317.8	281.5	36.27	8.762		
6,300.0	6,188.0	6,358.1	6,189.0	24.3	28.9	-93.07	453.0	-1,262.4	317.8	281.4	36.42	8.726		
6,350.0	6,238.0	6,408.1	6,239.0	24.4	28.9	-93.07	453.0	-1,262.4	317.8	281.2	36.58	8.689		
6,400.0	6,288.0	6,458.1	6,289.0	24.4	29.0	-93.07	453.0	-1,262.4	317.8	281.1	36.73	8.653		
6,450.0	6,338.0	6,508.1	6,339.0	24.5	29.0	-93.07	453.0	-1,262.4	317.8	280.9	36.89	8.616		
6,500.0	6,388.0	6,558.1	6,389.0	24.6	29.1	-93.07	453.0	-1,262.4	317.8	280.8	37.04	8.580		
6,550.0	6,438.0	6,608.1	6,439.0	24.6	29.1	-93.07	453.0	-1,262.4	317.8	280.6	37.20	8.544		
6,600.0	6,488.0	6,658.1	6,489.0	24.7	29.2	-93.07	453.0	-1,262.4	317.8	280.5	37.35	8.509		
6,650.0	6,538.0	6,708.1	6,539.0	24.8	29.3	-93.07	453.0	-1,262.4	317.8	280.3	37.51	8.473		
6,700.0	6,588.0	6,758.1	6,589.0	24.8	29.3	-93.07	453.0	-1,262.4	317.8	280.2	37.67	8.437		
6,750.0	6,638.0	6,808.1	6,639.0	24.9	29.4	-93.07	453.0	-1,262.4	317.8	280.0	37.83	8.402		
6,800.0	6,688.0	6,858.1	6,689.0	25.0	29.4	-93.07	453.0	-1,262.4	317.8	279.8	37.99	8.367		
6,850.0	6,738.0	6,908.1	6,739.0	25.0	29.5	-93.07	453.0	-1,262.4	317.8	279.7	38.15	8.332		
6,900.0	6,788.0	6,958.1	6,789.0	25.1	29.5	-93.07	453.0	-1,262.4	317.8	279.5	38.31	8.297		
6,950.0	6,838.0	7,008.1	6,839.0	25.1	29.6	-93.07	453.0	-1,262.4	317.8	279.4	38.47	8.262		
7,000.0	6,888.0	7,058.1	6,889.0	25.2	29.6	-93.07	453.0	-1,262.4	317.8	279.2	38.63	8.227		
7,050.0	6,938.0	7,108.1	6,939.0	25.3	29.7	-93.07	453.0	-1,262.4	317.8	279.0	38.79	8.193		
7,100.0	6,988.0	7,158.1	6,989.0	25.3	29.8	-93.07	453.0	-1,262.4	317.8	278.9	38.96	8.158		
7,150.0	7,038.0	7,208.1	7,039.0	25.4	29.8	-93.07	453.0	-1,262.4	317.8	278.7	39.12	8.124		
7,200.0	7,088.0	7,258.1	7,089.0	25.5	29.9	-93.07	453.0	-1,262.4	317.8	278.5	39.28	8.090		
7,250.0	7,138.0	7,308.1	7,139.0	25.5	29.9	-93.07	453.0	-1,262.4	317.8	278.4	39.45	8.056		
7,300.0	7,188.0	7,358.1	7,189.0	25.6	30.0	-93.07	453.0	-1,262.4	317.8	278.2	39.62	8.023		
7,350.0	7,238.0	7,408.1	7,239.0	25.7	30.0	-93.07	453.0	-1,262.4	317.8	278.0	39.78	7.989		
7,400.0	7,288.0	7,458.1	7,289.0	25.8	30.1	-93.07	453.0	-1,262.4	317.8	277.9	39.95	7.956		
7,450.0	7,338.0	7,508.1	7,339.0	25.8	30.2	-93.07	453.0	-1,262.4	317.8	277.7	40.12	7.923		
7,500.0	7,388.0	7,558.1	7,389.0	25.9	30.2	-93.07	453.0	-1,262.4	317.8	277.5	40.28	7.890		
7,550.0	7,438.0	7,608.1	7,439.0	26.0	30.3	-93.07	453.0	-1,262.4	317.8	277.4	40.45	7.857		

CC - Min centre to center distance or convergent point, SF - min separation factor, ES - min ellipse separation

Company:	Clear Creek Resource Partners	Local Co-ordinate Reference:	Well True Ranch Fee 503-2326H
Project:	SEC.23-T15N-R65W	TVD Reference:	WELL @ 5881.0ft (Original Well Elev)
Reference Site:	True Ranch Fee 2326H East Pad Sec.23-T15N-R65W	MD Reference:	WELL @ 5881.0ft (Original Well Elev)
Site Error:	0.0 ft	North Reference:	True
Reference Well:	True Ranch Fee 503-2326H	Survey Calculation Method:	Minimum Curvature
Well Error:	0.0 ft	Output errors are at	2.00 sigma
Reference Wellbore	Wellbore #1	Database:	US_EDM
Reference Design:	Plan #1 (1-29-18)	Offset TVD Reference:	Offset Datum

Offset Design		True Ranch Fee 2326H East Pad Sec.23-T15N-R65W - True Ranch Fee 204-2326H - Wellbore #1 - Pla										Offset Site Error:		0.0 ft	
Survey Program: 0-MWD												Offset Well Error:		0.0 ft	
Reference		Offset		Semi Major Axis			Distance							Warning	
Measured Depth	Vertical Depth	Measured Depth	Vertical Depth	Reference	Offset	Highside Toolface	Offset Wellbore Centre		Between Centres	Between Ellipses	Minimum Separation	Separation Factor			
(ft)	(ft)	(ft)	(ft)	(ft)	(ft)	(°)	+N/-S (ft)	+E/-W (ft)	(ft)	(ft)	(ft)				
7,600.0	7,488.0	7,658.1	7,489.0	26.0	30.3	-93.07	453.0	-1,262.4	317.8	277.2	40.62	7.824			
7,650.0	7,538.0	7,708.1	7,539.0	26.1	30.4	-93.07	453.0	-1,262.4	317.8	277.0	40.79	7.791			
7,700.0	7,588.0	7,758.1	7,589.0	26.2	30.5	-93.07	453.0	-1,262.4	317.8	276.9	40.96	7.759			
7,750.0	7,638.0	7,808.1	7,639.0	26.2	30.5	-93.07	453.0	-1,262.4	317.8	276.7	41.13	7.727			
7,781.0	7,669.0	7,839.1	7,670.0	26.3	30.6	-93.07	453.0	-1,262.4	317.8	276.6	41.24	7.707			
7,800.0	7,688.0	7,857.9	7,688.8	26.3	30.6	-93.07	453.0	-1,262.4	317.8	276.5	41.30	7.695			
7,850.0	7,738.0	7,906.3	7,737.2	26.4	30.6	-93.44	450.9	-1,262.4	318.0	276.4	41.56	7.651			
7,900.0	7,788.0	7,954.3	7,784.8	26.4	30.6	-94.38	445.7	-1,262.5	318.4	276.5	41.97	7.587			
7,950.0	7,838.0	8,001.3	7,831.1	26.5	30.7	-95.85	437.5	-1,262.6	319.3	276.8	42.53	7.509			
8,000.0	7,888.0	8,047.2	7,875.6	26.6	30.7	81.39	426.6	-1,262.7	320.9	278.0	42.97	7.468			
8,050.0	7,937.9	8,092.2	7,918.6	26.6	30.7	79.34	413.1	-1,262.9	323.0	279.3	43.68	7.394			
8,100.0	7,987.4	8,136.7	7,960.1	26.7	30.6	77.37	397.1	-1,263.2	325.4	281.1	44.30	7.345			
8,150.0	8,036.4	8,180.6	8,000.1	26.7	30.6	75.48	378.9	-1,263.4	328.1	283.3	44.80	7.323			
8,200.0	8,084.5	8,224.0	8,038.4	26.7	30.6	73.69	358.5	-1,263.7	331.0	285.8	45.16	7.329			
8,250.0	8,131.6	8,266.9	8,075.0	26.6	30.5	71.99	336.1	-1,264.0	334.1	288.7	45.38	7.362			
8,300.0	8,177.4	8,309.4	8,109.8	26.6	30.5	70.40	311.8	-1,264.4	337.3	291.9	45.44	7.423			
8,350.0	8,221.7	8,350.0	8,141.7	26.6	30.5	68.96	286.7	-1,264.7	340.6	295.3	45.34	7.512			
8,400.0	8,264.3	8,393.3	8,174.1	26.5	30.4	67.54	258.0	-1,265.1	343.9	298.8	45.10	7.625			
8,450.0	8,304.9	8,434.7	8,203.4	26.5	30.4	66.28	228.7	-1,265.5	347.1	302.4	44.72	7.762			
8,500.0	8,343.4	8,475.8	8,230.7	26.4	30.3	65.12	198.1	-1,266.0	350.2	306.0	44.22	7.920			
8,550.0	8,379.6	8,516.6	8,256.1	26.3	30.3	64.07	166.1	-1,266.4	353.2	309.6	43.63	8.096			
8,600.0	8,413.3	8,557.2	8,279.5	26.3	30.2	63.14	132.9	-1,266.9	356.0	313.0	42.98	8.284			
8,650.0	8,444.4	8,600.0	8,302.1	26.2	30.2	62.27	96.6	-1,267.4	358.6	316.3	42.29	8.479			
8,700.0	8,472.6	8,637.9	8,320.2	26.1	30.2	61.58	63.4	-1,267.9	360.9	319.3	41.63	8.670			
8,750.0	8,497.9	8,677.9	8,337.5	26.1	30.1	60.97	27.2	-1,268.4	363.0	322.0	41.01	8.850			
8,800.0	8,520.1	8,717.8	8,352.7	26.0	30.1	60.46	-9.7	-1,268.9	364.7	324.2	40.49	9.008			
8,850.0	8,539.1	8,757.7	8,365.7	26.0	30.1	60.05	-47.3	-1,269.5	366.1	326.0	40.10	9.131			
8,900.0	8,554.9	8,800.0	8,377.3	26.0	30.1	59.74	-88.0	-1,270.0	367.2	327.3	39.88	9.207			
8,950.0	8,567.3	8,837.1	8,385.4	26.0	30.1	59.55	-124.2	-1,270.5	367.9	328.0	39.87	9.227			
9,000.0	8,576.3	8,876.7	8,392.0	26.0	30.1	59.45	-163.3	-1,271.1	368.3	328.2	40.06	9.192			
9,050.0	8,581.9	8,916.4	8,396.4	26.0	30.2	59.46	-202.7	-1,271.7	368.2	327.8	40.48	9.096			
9,100.0	8,584.0	8,956.0	8,398.7	26.1	30.2	59.57	-242.2	-1,272.2	367.9	326.7	41.13	8.943			
9,144.2	8,584.1	8,994.2	8,399.0	26.2	30.3	59.59	-280.4	-1,272.8	367.8	326.1	41.66	8.828			
9,150.0	8,583.9	9,000.0	8,398.9	26.2	30.3	59.61	-286.2	-1,272.9	367.7	325.9	41.74	8.809			
9,200.0	8,583.9	9,050.0	8,398.8	26.4	30.4	59.61	-336.2	-1,273.6	367.7	325.3	42.40	8.671			
9,250.0	8,583.8	9,100.0	8,398.7	26.6	30.6	59.60	-386.2	-1,274.3	367.7	324.5	43.17	8.517			
9,300.0	8,583.7	9,150.0	8,398.6	26.9	30.7	59.59	-436.2	-1,275.0	367.7	323.7	43.99	8.359			
9,350.0	8,583.6	9,200.0	8,398.5	27.1	30.9	59.59	-486.2	-1,275.8	367.8	322.9	44.86	8.197			
9,400.0	8,583.6	9,250.0	8,398.3	27.5	31.2	59.58	-536.2	-1,276.5	367.8	322.0	45.78	8.034			
9,450.0	8,583.5	9,300.0	8,398.2	27.8	31.4	59.57	-586.2	-1,277.2	367.8	321.1	46.74	7.869			
9,500.0	8,583.4	9,350.0	8,398.1	28.2	31.7	59.57	-636.1	-1,278.0	367.8	320.1	47.75	7.704			
9,550.0	8,583.3	9,400.0	8,398.0	28.7	32.1	59.56	-686.1	-1,278.7	367.9	319.1	48.79	7.540			
9,600.0	8,583.3	9,450.0	8,397.8	29.1	32.4	59.55	-736.1	-1,279.4	367.9	318.0	49.86	7.378			
9,650.0	8,583.2	9,500.0	8,397.7	29.6	32.8	59.55	-786.1	-1,280.2	367.9	316.9	50.98	7.217			
9,700.0	8,583.1	9,550.0	8,397.6	30.2	33.2	59.54	-836.1	-1,280.9	367.9	315.8	52.12	7.060			
9,750.0	8,583.0	9,600.0	8,397.5	30.7	33.7	59.53	-886.1	-1,281.6	368.0	314.7	53.29	6.905			
9,800.0	8,583.0	9,650.0	8,397.3	31.3	34.2	59.53	-936.1	-1,282.4	368.0	313.5	54.49	6.753			
9,850.0	8,582.9	9,700.0	8,397.2	31.9	34.7	59.52	-986.1	-1,283.1	368.0	312.3	55.72	6.605			
9,900.0	8,582.8	9,750.0	8,397.1	32.5	35.2	59.52	-1,036.1	-1,283.8	368.0	311.1	56.97	6.460			
9,950.0	8,582.7	9,800.0	8,397.0	33.2	35.8	59.51	-1,086.1	-1,284.6	368.1	309.8	58.24	6.319			
10,000.0	8,582.7	9,850.0	8,396.8	33.9	36.4	59.50	-1,136.1	-1,285.3	368.1	308.6	59.54	6.182			

CC - Min centre to center distance or convergent point, SF - min separation factor, ES - min ellipse separation

Company:	Clear Creek Resource Partners	Local Co-ordinate Reference:	Well True Ranch Fee 503-2326H
Project:	SEC.23-T15N-R65W	TVD Reference:	WELL @ 5881.0ft (Original Well Elev)
Reference Site:	True Ranch Fee 2326H East Pad Sec.23-T15N-R65W	MD Reference:	WELL @ 5881.0ft (Original Well Elev)
Site Error:	0.0 ft	North Reference:	True
Reference Well:	True Ranch Fee 503-2326H	Survey Calculation Method:	Minimum Curvature
Well Error:	0.0 ft	Output errors are at	2.00 sigma
Reference Wellbore	Wellbore #1	Database:	US_EDM
Reference Design:	Plan #1 (1-29-18)	Offset TVD Reference:	Offset Datum

Offset Design		True Ranch Fee 2326H East Pad Sec.23-T15N-R65W - True Ranch Fee 204-2326H - Wellbore #1 - Pla											Offset Site Error:		0.0 ft
Survey Program: 0-MWD													Offset Well Error:		0.0 ft
Reference		Offset		Semi Major Axis			Distance							Warning	
Measured Depth	Vertical Depth	Measured Depth	Vertical Depth	Reference	Offset	Highside Toolface	Offset Wellbore Centre		Between Centres	Between Ellipses	Minimum Separation	Separation Factor			
(ft)	(ft)	(ft)	(ft)	(ft)	(ft)	(°)	+N/-S (ft)	+E/-W (ft)	(ft)	(ft)	(ft)				
10,050.0	8,582.6	9,900.0	8,396.7	34.5	37.0	59.50	-1,186.1	-1,286.0	368.1	307.3	60.85	6.049			
10,100.0	8,582.5	9,950.0	8,396.6	35.2	37.6	59.49	-1,236.1	-1,286.8	368.1	306.0	62.19	5.920			
10,150.0	8,582.4	10,000.0	8,396.5	35.9	38.2	59.48	-1,286.1	-1,287.5	368.2	304.6	63.54	5.795			
10,200.0	8,582.3	10,050.0	8,396.3	36.7	38.9	59.48	-1,336.1	-1,288.2	368.2	303.3	64.90	5.673			
10,250.0	8,582.3	10,100.0	8,396.2	37.4	39.6	59.47	-1,386.1	-1,289.0	368.2	301.9	66.29	5.555			
10,300.0	8,582.2	10,150.0	8,396.1	38.1	40.2	59.46	-1,436.1	-1,289.7	368.3	300.6	67.68	5.441			
10,350.0	8,582.1	10,200.0	8,396.0	38.9	40.9	59.46	-1,486.1	-1,290.4	368.3	299.2	69.09	5.330			
10,400.0	8,582.0	10,250.0	8,395.8	39.6	41.7	59.45	-1,536.0	-1,291.2	368.3	297.8	70.52	5.223			
10,450.0	8,582.0	10,300.0	8,395.7	40.4	42.4	59.44	-1,586.0	-1,291.9	368.3	296.4	71.95	5.119			
10,500.0	8,581.9	10,350.0	8,395.6	41.2	43.1	59.44	-1,636.0	-1,292.6	368.4	295.0	73.40	5.019			
10,550.0	8,581.8	10,400.0	8,395.5	42.0	43.9	59.43	-1,686.0	-1,293.4	368.4	293.5	74.85	4.922			
10,600.0	8,581.7	10,450.0	8,395.4	42.8	44.6	59.43	-1,736.0	-1,294.1	368.4	292.1	76.32	4.827			
10,650.0	8,581.7	10,500.0	8,395.2	43.6	45.4	59.42	-1,786.0	-1,294.8	368.4	290.6	77.79	4.736			
10,700.0	8,581.6	10,550.0	8,395.1	44.4	46.1	59.41	-1,836.0	-1,295.6	368.5	289.2	79.28	4.648			
10,750.0	8,581.5	10,600.0	8,395.0	45.2	46.9	59.41	-1,886.0	-1,296.3	368.5	287.7	80.77	4.562			
10,800.0	8,581.4	10,650.0	8,394.9	46.0	47.7	59.40	-1,936.0	-1,297.0	368.5	286.2	82.27	4.479			
10,850.0	8,581.4	10,700.0	8,394.7	46.9	48.5	59.39	-1,986.0	-1,297.8	368.5	284.8	83.78	4.399			
10,900.0	8,581.3	10,750.0	8,394.6	47.7	49.3	59.39	-2,036.0	-1,298.5	368.6	283.3	85.29	4.321			
10,950.0	8,581.2	10,800.0	8,394.5	48.5	50.1	59.38	-2,086.0	-1,299.2	368.6	281.8	86.81	4.246			
11,000.0	8,581.1	10,850.0	8,394.4	49.4	50.9	59.37	-2,136.0	-1,300.0	368.6	280.3	88.34	4.173			
11,050.0	8,581.1	10,900.0	8,394.2	50.2	51.7	59.37	-2,186.0	-1,300.7	368.6	278.8	89.87	4.102			
11,100.0	8,581.0	10,950.0	8,394.1	51.1	52.6	59.36	-2,236.0	-1,301.4	368.7	277.3	91.41	4.033			
11,150.0	8,580.9	11,000.0	8,394.0	51.9	53.4	59.35	-2,286.0	-1,302.1	368.7	275.7	92.95	3.966			
11,200.0	8,580.8	11,050.0	8,393.9	52.8	54.2	59.35	-2,336.0	-1,302.9	368.7	274.2	94.50	3.902			
11,250.0	8,580.8	11,100.0	8,393.7	53.6	55.0	59.34	-2,386.0	-1,303.6	368.7	272.7	96.06	3.839			
11,300.0	8,580.7	11,150.0	8,393.6	54.5	55.9	59.34	-2,435.9	-1,304.3	368.8	271.2	97.61	3.778			
11,350.0	8,580.6	11,200.0	8,393.5	55.4	56.7	59.33	-2,485.9	-1,305.1	368.8	269.6	99.18	3.719			
11,400.0	8,580.5	11,250.0	8,393.4	56.2	57.6	59.32	-2,535.9	-1,305.8	368.8	268.1	100.74	3.661			
11,450.0	8,580.5	11,300.0	8,393.2	57.1	58.4	59.32	-2,585.9	-1,306.5	368.8	266.5	102.31	3.605			
11,500.0	8,580.4	11,350.0	8,393.1	58.0	59.3	59.31	-2,635.9	-1,307.3	368.9	265.0	103.89	3.551			
11,550.0	8,580.3	11,400.0	8,393.0	58.9	60.1	59.30	-2,685.9	-1,308.0	368.9	263.4	105.47	3.498			
11,600.0	8,580.2	11,450.0	8,392.9	59.7	61.0	59.30	-2,735.9	-1,308.7	368.9	261.9	107.05	3.446			
11,650.0	8,580.2	11,500.0	8,392.7	60.6	61.9	59.29	-2,785.9	-1,309.5	368.9	260.3	108.63	3.396			
11,700.0	8,580.1	11,550.0	8,392.6	61.5	62.7	59.28	-2,835.9	-1,310.2	369.0	258.8	110.22	3.348			
11,750.0	8,580.0	11,600.0	8,392.5	62.4	63.6	59.28	-2,885.9	-1,310.9	369.0	257.2	111.81	3.300			
11,800.0	8,579.9	11,650.0	8,392.4	63.3	64.5	59.27	-2,935.9	-1,311.7	369.0	255.6	113.41	3.254			
11,850.0	8,579.9	11,700.0	8,392.3	64.2	65.4	59.27	-2,985.9	-1,312.4	369.1	254.1	115.00	3.209			
11,900.0	8,579.8	11,750.0	8,392.1	65.1	66.2	59.26	-3,035.9	-1,313.1	369.1	252.5	116.60	3.165			
11,950.0	8,579.7	11,800.0	8,392.0	66.0	67.1	59.25	-3,085.9	-1,313.9	369.1	250.9	118.20	3.123			
12,000.0	8,579.6	11,850.0	8,391.9	66.9	68.0	59.25	-3,135.9	-1,314.6	369.1	249.3	119.81	3.081			
12,050.0	8,579.6	11,900.0	8,391.8	67.8	68.9	59.24	-3,185.9	-1,315.3	369.2	247.7	121.41	3.041			
12,100.0	8,579.5	11,950.0	8,391.6	68.7	69.8	59.23	-3,235.9	-1,316.1	369.2	246.2	123.02	3.001			
12,150.0	8,579.4	12,000.0	8,391.5	69.6	70.7	59.23	-3,285.9	-1,316.8	369.2	244.6	124.63	2.962			
12,200.0	8,579.3	12,050.0	8,391.4	70.5	71.6	59.22	-3,335.8	-1,317.5	369.2	243.0	126.24	2.925			
12,250.0	8,579.3	12,100.0	8,391.3	71.4	72.5	59.21	-3,385.8	-1,318.3	369.3	241.4	127.86	2.888			
12,300.0	8,579.2	12,150.0	8,391.1	72.3	73.4	59.21	-3,435.8	-1,319.0	369.3	239.8	129.47	2.852			
12,350.0	8,579.1	12,200.0	8,391.0	73.2	74.3	59.20	-3,485.8	-1,319.7	369.3	238.2	131.09	2.817			
12,400.0	8,579.0	12,250.0	8,390.9	74.1	75.2	59.20	-3,535.8	-1,320.5	369.3	236.6	132.71	2.783			
12,450.0	8,579.0	12,300.0	8,390.8	75.0	76.1	59.19	-3,585.8	-1,321.2	369.4	235.0	134.33	2.750			
12,500.0	8,578.9	12,350.0	8,390.6	75.9	77.0	59.18	-3,635.8	-1,321.9	369.4	233.4	135.95	2.717			
12,550.0	8,578.8	12,400.0	8,390.5	76.9	77.9	59.18	-3,685.8	-1,322.7	369.4	231.8	137.57	2.685			

CC - Min centre to center distance or convergent point, SF - min separation factor, ES - min ellipse separation

Company:	Clear Creek Resource Partners	Local Co-ordinate Reference:	Well True Ranch Fee 503-2326H
Project:	SEC.23-T15N-R65W	TVD Reference:	WELL @ 5881.0ft (Original Well Elev)
Reference Site:	True Ranch Fee 2326H East Pad Sec.23-T15N-R65W	MD Reference:	WELL @ 5881.0ft (Original Well Elev)
Site Error:	0.0 ft	North Reference:	True
Reference Well:	True Ranch Fee 503-2326H	Survey Calculation Method:	Minimum Curvature
Well Error:	0.0 ft	Output errors are at	2.00 sigma
Reference Wellbore	Wellbore #1	Database:	US_EDM
Reference Design:	Plan #1 (1-29-18)	Offset TVD Reference:	Offset Datum

Offset Design		True Ranch Fee 2326H East Pad Sec.23-T15N-R65W - True Ranch Fee 204-2326H - Wellbore #1 - Pla											Offset Site Error:	0.0 ft
Survey Program: 0-MWD													Offset Well Error:	0.0 ft
Reference		Offset		Semi Major Axis			Distance							
Measured Depth	Vertical Depth	Measured Depth	Vertical Depth	Reference	Offset	Highside Toolface	Offset Wellbore Centre +N/-S	+E/-W	Between Centres	Between Ellipses	Minimum Separation	Separation Factor	Warning	
(ft)	(ft)	(ft)	(ft)	(ft)	(ft)	(°)	(ft)	(ft)	(ft)	(ft)	(ft)			
12,600.0	8,578.7	12,450.0	8,390.4	77.8	78.8	59.17	-3,735.8	-1,323.4	369.4	230.2	139.20	2.654		
12,650.0	8,578.7	12,500.0	8,390.3	78.7	79.7	59.16	-3,785.8	-1,324.1	369.5	228.6	140.83	2.624		
12,700.0	8,578.6	12,550.0	8,390.1	79.6	80.6	59.16	-3,835.8	-1,324.9	369.5	227.0	142.45	2.594		
12,750.0	8,578.5	12,600.0	8,390.0	80.5	81.5	59.15	-3,885.8	-1,325.6	369.5	225.4	144.08	2.565		
12,800.0	8,578.4	12,650.0	8,389.9	81.5	82.4	59.14	-3,935.8	-1,326.3	369.5	223.8	145.71	2.536		
12,850.0	8,578.4	12,700.0	8,389.8	82.4	83.3	59.14	-3,985.8	-1,327.1	369.6	222.2	147.35	2.508		
12,900.0	8,578.3	12,750.0	8,389.6	83.3	84.2	59.13	-4,035.8	-1,327.8	369.6	220.6	148.98	2.481		
12,950.0	8,578.2	12,800.0	8,389.5	84.2	85.1	59.12	-4,085.8	-1,328.5	369.6	219.0	150.61	2.454		
13,000.0	8,578.1	12,850.0	8,389.4	85.1	86.0	59.12	-4,135.8	-1,329.2	369.6	217.4	152.25	2.428		
13,050.0	8,578.0	12,900.0	8,389.3	86.1	87.0	59.11	-4,185.8	-1,330.0	369.7	215.8	153.88	2.402		
13,100.0	8,578.0	12,950.0	8,389.1	87.0	87.9	59.11	-4,235.7	-1,330.7	369.7	214.2	155.52	2.377		
13,150.0	8,577.9	13,000.0	8,389.0	87.9	88.8	59.10	-4,285.7	-1,331.4	369.7	212.6	157.16	2.353		
13,200.0	8,577.8	13,050.0	8,388.9	88.9	89.7	59.09	-4,335.7	-1,332.2	369.8	211.0	158.80	2.328		
13,250.0	8,577.7	13,100.0	8,388.8	89.8	90.6	59.09	-4,385.7	-1,332.9	369.8	209.3	160.43	2.305		
13,300.0	8,577.7	13,150.0	8,388.7	90.7	91.6	59.08	-4,435.7	-1,333.6	369.8	207.7	162.08	2.282		
13,350.0	8,577.6	13,200.0	8,388.5	91.6	92.5	59.07	-4,485.7	-1,334.4	369.8	206.1	163.72	2.259		
13,400.0	8,577.5	13,250.0	8,388.4	92.6	93.4	59.07	-4,535.7	-1,335.1	369.9	204.5	165.36	2.237		
13,450.0	8,577.4	13,300.0	8,388.3	93.5	94.3	59.06	-4,585.7	-1,335.8	369.9	202.9	167.00	2.215		
13,500.0	8,577.4	13,350.0	8,388.2	94.4	95.2	59.05	-4,635.7	-1,336.6	369.9	201.3	168.64	2.193		
13,550.0	8,577.3	13,400.0	8,388.0	95.4	96.2	59.05	-4,685.7	-1,337.3	369.9	199.6	170.29	2.172		
13,600.0	8,577.2	13,450.0	8,387.9	96.3	97.1	59.04	-4,735.7	-1,338.0	370.0	198.0	171.93	2.152		
13,650.0	8,577.1	13,500.0	8,387.8	97.2	98.0	59.04	-4,785.7	-1,338.8	370.0	196.4	173.58	2.132		
13,700.0	8,577.1	13,550.0	8,387.7	98.2	99.0	59.03	-4,835.7	-1,339.5	370.0	194.8	175.22	2.112		
13,750.0	8,577.0	13,600.0	8,387.5	99.1	99.9	59.02	-4,885.7	-1,340.2	370.0	193.2	176.87	2.092		
13,800.0	8,576.9	13,650.0	8,387.4	100.0	100.8	59.02	-4,935.7	-1,341.0	370.1	191.5	178.52	2.073		
13,850.0	8,576.8	13,700.0	8,387.3	101.0	101.7	59.01	-4,985.7	-1,341.7	370.1	189.9	180.16	2.054		
13,900.0	8,576.8	13,750.0	8,387.2	101.9	102.7	59.00	-5,035.7	-1,342.4	370.1	188.3	181.81	2.036		
13,950.0	8,576.7	13,800.0	8,387.0	102.8	103.6	59.00	-5,085.7	-1,343.2	370.1	186.7	183.46	2.018		
14,000.0	8,576.6	13,850.0	8,386.9	103.8	104.5	58.99	-5,135.6	-1,343.9	370.2	185.1	185.11	2.000		
14,050.0	8,576.5	13,900.0	8,386.8	104.7	105.5	58.98	-5,185.6	-1,344.6	370.2	183.4	186.76	1.982		
14,100.0	8,576.5	13,950.0	8,386.7	105.7	106.4	58.98	-5,235.6	-1,345.4	370.2	181.8	188.41	1.965		
14,150.0	8,576.4	14,000.0	8,386.5	106.6	107.3	58.97	-5,285.6	-1,346.1	370.2	180.2	190.06	1.948		
14,200.0	8,576.3	14,050.0	8,386.4	107.5	108.3	58.97	-5,335.6	-1,346.8	370.3	178.6	191.71	1.931		
14,250.0	8,576.2	14,100.0	8,386.3	108.5	109.2	58.96	-5,385.6	-1,347.6	370.3	176.9	193.36	1.915		
14,300.0	8,576.2	14,150.0	8,386.2	109.4	110.1	58.95	-5,435.6	-1,348.3	370.3	175.3	195.01	1.899		
14,350.0	8,576.1	14,200.0	8,386.0	110.4	111.1	58.95	-5,485.6	-1,349.0	370.4	173.7	196.67	1.883		
14,400.0	8,576.0	14,250.0	8,385.9	111.3	112.0	58.94	-5,535.6	-1,349.8	370.4	172.1	198.32	1.868		
14,450.0	8,575.9	14,300.0	8,385.8	112.2	112.9	58.93	-5,585.6	-1,350.5	370.4	170.4	199.97	1.852		
14,500.0	8,575.9	14,350.0	8,385.7	113.2	113.9	58.93	-5,635.6	-1,351.2	370.4	168.8	201.62	1.837		
14,550.0	8,575.8	14,400.0	8,385.6	114.1	114.8	58.92	-5,685.6	-1,352.0	370.5	167.2	203.28	1.822		
14,600.0	8,575.7	14,450.0	8,385.4	115.1	115.7	58.92	-5,735.6	-1,352.7	370.5	165.6	204.93	1.808		
14,650.0	8,575.6	14,500.0	8,385.3	116.0	116.7	58.91	-5,785.6	-1,353.4	370.5	163.9	206.59	1.793		
14,700.0	8,575.6	14,550.0	8,385.2	116.9	117.6	58.90	-5,835.6	-1,354.2	370.5	162.3	208.24	1.779		
14,750.0	8,575.5	14,600.0	8,385.1	117.9	118.6	58.90	-5,885.6	-1,354.9	370.6	160.7	209.90	1.765		
14,800.0	8,575.4	14,650.0	8,384.9	118.8	119.5	58.89	-5,935.6	-1,355.6	370.6	159.0	211.55	1.752		
14,850.0	8,575.3	14,700.0	8,384.8	119.8	120.4	58.88	-5,985.6	-1,356.3	370.6	157.4	213.21	1.738		
14,900.0	8,575.3	14,750.0	8,384.7	120.7	121.4	58.88	-6,035.5	-1,357.1	370.6	155.8	214.86	1.725		
14,950.0	8,575.2	14,800.0	8,384.6	121.7	122.3	58.87	-6,085.5	-1,357.8	370.7	154.2	216.52	1.712		
15,000.0	8,575.1	14,850.0	8,384.4	122.6	123.2	58.86	-6,135.5	-1,358.5	370.7	152.5	218.17	1.699		
15,050.0	8,575.0	14,900.0	8,384.3	123.6	124.2	58.86	-6,185.5	-1,359.3	370.7	150.9	219.83	1.686		
15,100.0	8,575.0	14,950.0	8,384.2	124.5	125.1	58.85	-6,235.5	-1,360.0	370.7	149.3	221.48	1.674		

CC - Min centre to center distance or convergent point, SF - min separation factor, ES - min ellipse separation

Company:	Clear Creek Resource Partners	Local Co-ordinate Reference:	Well True Ranch Fee 503-2326H
Project:	SEC.23-T15N-R65W	TVD Reference:	WELL @ 5881.0ft (Original Well Elev)
Reference Site:	True Ranch Fee 2326H East Pad Sec.23-T15N-R65W	MD Reference:	WELL @ 5881.0ft (Original Well Elev)
Site Error:	0.0 ft	North Reference:	True
Reference Well:	True Ranch Fee 503-2326H	Survey Calculation Method:	Minimum Curvature
Well Error:	0.0 ft	Output errors are at	2.00 sigma
Reference Wellbore	Wellbore #1	Database:	US_EDM
Reference Design:	Plan #1 (1-29-18)	Offset TVD Reference:	Offset Datum

Offset Design True Ranch Fee 2326H East Pad Sec.23-T15N-R65W - True Ranch Fee 204-2326H - Wellbore #1 - Pla													Offset Site Error:	0.0 ft
Survey Program: 0-MWD													Offset Well Error:	0.0 ft
Measured Depth (ft)	Vertical Depth (ft)	Measured Depth (ft)	Vertical Depth (ft)	Reference (ft)	Offset (ft)	Semi Major Axis Highside Toolface (°)	Offset Wellbore Centre +N/-S (ft)	+E/-W (ft)	Between Centres (ft)	Between Ellipses (ft)	Minimum Separation (ft)	Separation Factor	Warning	
15,150.0	8,574.9	15,000.0	8,384.1	125.4	126.1	58.85	-6,285.5	-1,360.7	370.8	147.6	223.14	1.662		
15,200.0	8,574.8	15,050.0	8,383.9	126.4	127.0	58.84	-6,335.5	-1,361.5	370.8	146.0	224.80	1.649		
15,250.0	8,574.7	15,100.0	8,383.8	127.3	128.0	58.83	-6,385.5	-1,362.2	370.8	144.4	226.45	1.638		
15,300.0	8,574.7	15,150.0	8,383.7	128.3	128.9	58.83	-6,435.5	-1,362.9	370.8	142.7	228.11	1.626		
15,350.0	8,574.6	15,200.0	8,383.6	129.2	129.8	58.82	-6,485.5	-1,363.7	370.9	141.1	229.77	1.614		
15,400.0	8,574.5	15,250.0	8,383.4	130.2	130.8	58.81	-6,535.5	-1,364.4	370.9	139.5	231.43	1.603		
15,450.0	8,574.4	15,300.0	8,383.3	131.1	131.7	58.81	-6,585.5	-1,365.1	370.9	137.8	233.08	1.591		
15,500.0	8,574.4	15,350.0	8,383.2	132.1	132.7	58.80	-6,635.5	-1,365.9	371.0	136.2	234.74	1.580		
15,550.0	8,574.3	15,400.0	8,383.1	133.0	133.6	58.79	-6,685.5	-1,366.6	371.0	134.6	236.40	1.569		
15,600.0	8,574.2	15,450.0	8,382.9	134.0	134.6	58.79	-6,735.5	-1,367.3	371.0	133.0	238.06	1.558		
15,650.0	8,574.1	15,500.0	8,382.8	134.9	135.5	58.78	-6,785.5	-1,368.1	371.0	131.3	239.71	1.548		
15,700.0	8,574.0	15,550.0	8,382.7	135.9	136.4	58.78	-6,835.5	-1,368.8	371.1	129.7	241.37	1.537		
15,750.0	8,574.0	15,600.0	8,382.6	136.8	137.4	58.77	-6,885.5	-1,369.5	371.1	128.1	243.03	1.527		
15,800.0	8,573.9	15,650.0	8,382.5	137.8	138.3	58.76	-6,935.4	-1,370.3	371.1	126.4	244.69	1.517		
15,850.0	8,573.8	15,700.0	8,382.3	138.7	139.3	58.76	-6,985.4	-1,371.0	371.1	124.8	246.35	1.507		
15,900.0	8,573.7	15,750.0	8,382.2	139.7	140.2	58.75	-7,035.4	-1,371.7	371.2	123.2	248.01	1.497 Level 3		
15,950.0	8,573.7	15,800.0	8,382.1	140.6	141.2	58.74	-7,085.4	-1,372.5	371.2	121.5	249.66	1.487 Level 3		
16,000.0	8,573.6	15,850.0	8,382.0	141.6	142.1	58.74	-7,135.4	-1,373.2	371.2	119.9	251.32	1.477 Level 3		
16,050.0	8,573.5	15,900.0	8,381.8	142.5	143.1	58.73	-7,185.4	-1,373.9	371.2	118.3	252.98	1.467 Level 3		
16,100.0	8,573.4	15,950.0	8,381.7	143.5	144.0	58.73	-7,235.4	-1,374.7	371.3	116.6	254.64	1.458 Level 3		
16,150.0	8,573.4	16,000.0	8,381.6	144.4	145.0	58.72	-7,285.4	-1,375.4	371.3	115.0	256.30	1.449 Level 3		
16,200.0	8,573.3	16,050.0	8,381.5	145.4	145.9	58.71	-7,335.4	-1,376.1	371.3	113.4	257.96	1.439 Level 3		
16,250.0	8,573.2	16,100.0	8,381.3	146.3	146.8	58.71	-7,385.4	-1,376.9	371.3	111.7	259.62	1.430 Level 3		
16,300.0	8,573.1	16,150.0	8,381.2	147.3	147.8	58.70	-7,435.4	-1,377.6	371.4	110.1	261.28	1.421 Level 3		
16,350.0	8,573.1	16,200.0	8,381.1	148.2	148.7	58.69	-7,485.4	-1,378.3	371.4	108.5	262.94	1.413 Level 3		
16,400.0	8,573.0	16,250.0	8,381.0	149.2	149.7	58.69	-7,535.4	-1,379.1	371.4	106.8	264.59	1.404 Level 3		
16,450.0	8,572.9	16,300.0	8,380.8	150.1	150.6	58.68	-7,585.4	-1,379.8	371.5	105.2	266.25	1.395 Level 3		
16,500.0	8,572.8	16,350.0	8,380.7	151.1	151.6	58.67	-7,635.4	-1,380.5	371.5	103.6	267.91	1.387 Level 3		
16,550.0	8,572.8	16,400.0	8,380.6	152.0	152.5	58.67	-7,685.4	-1,381.3	371.5	101.9	269.57	1.378 Level 3		
16,600.0	8,572.7	16,450.0	8,380.5	153.0	153.5	58.66	-7,735.4	-1,382.0	371.5	100.3	271.23	1.370 Level 3		
16,650.0	8,572.6	16,500.0	8,380.3	153.9	154.4	58.66	-7,785.4	-1,382.7	371.6	98.7	272.89	1.362 Level 3		
16,700.0	8,572.5	16,550.0	8,380.2	154.9	155.4	58.65	-7,835.3	-1,383.5	371.6	97.0	274.55	1.353 Level 3		
16,750.0	8,572.5	16,600.0	8,380.1	155.8	156.3	58.64	-7,885.3	-1,384.2	371.6	95.4	276.21	1.345 Level 3		
16,800.0	8,572.4	16,650.0	8,380.0	156.8	157.3	58.64	-7,935.3	-1,384.9	371.6	93.8	277.87	1.337 Level 3		
16,850.0	8,572.3	16,700.0	8,379.8	157.7	158.2	58.63	-7,985.3	-1,385.6	371.7	92.1	279.53	1.330 Level 3		
16,900.0	8,572.2	16,750.0	8,379.7	158.7	159.2	58.62	-8,035.3	-1,386.4	371.7	90.5	281.19	1.322 Level 3		
16,950.0	8,572.2	16,800.0	8,379.6	159.6	160.1	58.62	-8,085.3	-1,387.1	371.7	88.9	282.85	1.314 Level 3		
17,000.0	8,572.1	16,850.0	8,379.5	160.6	161.1	58.61	-8,135.3	-1,387.8	371.7	87.2	284.51	1.307 Level 3		
17,050.0	8,572.0	16,900.0	8,379.3	161.5	162.0	58.61	-8,185.3	-1,388.6	371.8	85.6	286.17	1.299 Level 3		
17,100.0	8,571.9	16,950.0	8,379.2	162.5	163.0	58.60	-8,235.3	-1,389.3	371.8	84.0	287.83	1.292 Level 3		
17,150.0	8,571.9	17,000.0	8,379.1	163.4	163.9	58.59	-8,285.3	-1,390.0	371.8	82.3	289.48	1.284 Level 3		
17,200.0	8,571.8	17,050.0	8,379.0	164.4	164.9	58.59	-8,335.3	-1,390.8	371.8	80.7	291.14	1.277 Level 3		
17,250.0	8,571.7	17,100.0	8,378.9	165.3	165.8	58.58	-8,385.3	-1,391.5	371.9	79.1	292.80	1.270 Level 3		
17,300.0	8,571.6	17,150.0	8,378.7	166.3	166.8	58.57	-8,435.3	-1,392.2	371.9	77.4	294.46	1.263 Level 3		
17,350.0	8,571.6	17,200.0	8,378.6	167.3	167.7	58.57	-8,485.3	-1,393.0	371.9	75.8	296.12	1.256 Level 3		
17,400.0	8,571.5	17,250.0	8,378.5	168.2	168.7	58.56	-8,535.3	-1,393.7	372.0	74.2	297.78	1.249 Level 2		
17,450.0	8,571.4	17,300.0	8,378.4	169.2	169.6	58.56	-8,585.3	-1,394.4	372.0	72.5	299.44	1.242 Level 2		
17,500.0	8,571.3	17,350.0	8,378.2	170.1	170.6	58.55	-8,635.3	-1,395.2	372.0	70.9	301.10	1.235 Level 2		
17,550.0	8,571.3	17,400.0	8,378.1	171.1	171.5	58.54	-8,685.3	-1,395.9	372.0	69.3	302.76	1.229 Level 2		
17,600.0	8,571.2	17,450.0	8,378.0	172.0	172.5	58.54	-8,735.2	-1,396.6	372.1	67.6	304.42	1.222 Level 2		
17,650.0	8,571.1	17,500.0	8,377.9	173.0	173.4	58.53	-8,785.2	-1,397.4	372.1	66.0	306.08	1.216 Level 2		

CC - Min centre to center distance or convergent point, SF - min separation factor, ES - min ellipse separation

Company:	Clear Creek Resource Partners	Local Co-ordinate Reference:	Well True Ranch Fee 503-2326H
Project:	SEC.23-T15N-R65W	TVD Reference:	WELL @ 5881.0ft (Original Well Elev)
Reference Site:	True Ranch Fee 2326H East Pad Sec.23-T15N-R65W	MD Reference:	WELL @ 5881.0ft (Original Well Elev)
Site Error:	0.0 ft	North Reference:	True
Reference Well:	True Ranch Fee 503-2326H	Survey Calculation Method:	Minimum Curvature
Well Error:	0.0 ft	Output errors are at	2.00 sigma
Reference Wellbore	Wellbore #1	Database:	US_EDM
Reference Design:	Plan #1 (1-29-18)	Offset TVD Reference:	Offset Datum

Offset Design													True Ranch Fee 2326H East Pad Sec.23-T15N-R65W - True Ranch Fee 204-2326H - Wellbore #1 - Pla		Offset Site Error:		0.0 ft
Survey Program: 0-MWD													Offset Well Error:		0.0 ft		
Reference		Offset		Semi Major Axis			Distance							Warning			
Measured Depth	Vertical Depth	Measured Depth	Vertical Depth	Reference	Offset	Highside Toolface	Offset Wellbore Centre	Between Centres	Between Ellipses	Minimum Separation	Separation Factor						
(ft)	(ft)	(ft)	(ft)	(ft)	(ft)	(°)	+N/-S (ft)	+E/-W (ft)	(ft)	(ft)	(ft)						
17,700.0	8,571.0	17,550.0	8,377.7	173.9	174.4	58.52	-8,835.2	-1,398.1	372.1	64.4	307.74	1.209	Level 2				
17,750.0	8,571.0	17,600.0	8,377.6	174.9	175.3	58.52	-8,885.2	-1,398.8	372.1	62.7	309.39	1.203	Level 2				
17,800.0	8,570.9	17,650.0	8,377.5	175.8	176.3	58.51	-8,935.2	-1,399.6	372.2	61.1	311.05	1.196	Level 2				
17,850.0	8,570.8	17,700.0	8,377.4	176.8	177.3	58.51	-8,985.2	-1,400.3	372.2	59.5	312.71	1.190	Level 2				
17,900.0	8,570.7	17,750.0	8,377.2	177.8	178.2	58.50	-9,035.2	-1,401.0	372.2	57.8	314.37	1.184	Level 2				
17,950.0	8,570.7	17,800.0	8,377.1	178.7	179.2	58.49	-9,085.2	-1,401.8	372.2	56.2	316.03	1.178	Level 2				
18,000.0	8,570.6	17,850.0	8,377.0	179.7	180.1	58.49	-9,135.2	-1,402.5	372.3	54.6	317.69	1.172	Level 2				
18,050.0	8,570.5	17,900.0	8,376.9	180.6	181.1	58.48	-9,185.2	-1,403.2	372.3	53.0	319.35	1.166	Level 2				
18,100.0	8,570.4	17,950.0	8,376.7	181.6	182.0	58.47	-9,235.2	-1,404.0	372.3	51.3	321.01	1.160	Level 2				
18,150.0	8,570.4	18,000.0	8,376.6	182.5	183.0	58.47	-9,285.2	-1,404.7	372.4	49.7	322.66	1.154	Level 2				
18,200.0	8,570.3	18,050.0	8,376.5	183.5	183.9	58.46	-9,335.2	-1,405.4	372.4	48.1	324.32	1.148	Level 2				
18,250.0	8,570.2	18,100.0	8,376.4	184.4	184.9	58.45	-9,385.2	-1,406.2	372.4	46.4	325.98	1.142	Level 2				
18,300.0	8,570.1	18,150.0	8,376.2	185.4	185.8	58.45	-9,435.2	-1,406.9	372.4	44.8	327.64	1.137	Level 2				
18,350.0	8,570.1	18,200.0	8,376.1	186.3	186.8	58.44	-9,485.2	-1,407.6	372.5	43.2	329.30	1.131	Level 2				
18,384.3	8,570.0	18,234.3	8,376.0	187.0	187.4	58.44	-9,519.5	-1,408.1	372.5	42.0	330.43	1.127	Level 2, SF				

Company:	Clear Creek Resource Partners	Local Co-ordinate Reference:	Well True Ranch Fee 503-2326H
Project:	SEC.23-T15N-R65W	TVD Reference:	WELL @ 5881.0ft (Original Well Elev)
Reference Site:	True Ranch Fee 2326H East Pad Sec.23-T15N-R65W	MD Reference:	WELL @ 5881.0ft (Original Well Elev)
Site Error:	0.0 ft	North Reference:	True
Reference Well:	True Ranch Fee 503-2326H	Survey Calculation Method:	Minimum Curvature
Well Error:	0.0 ft	Output errors are at	2.00 sigma
Reference Wellbore	Wellbore #1	Database:	US_EDM
Reference Design:	Plan #1 (1-29-18)	Offset TVD Reference:	Offset Datum

Offset Design True Ranch Fee 2326H East Pad Sec.23-T15N-R65W - True Ranch Fee 501-2326H - Wellbore #1 - Pla													Offset Site Error:	0.0 ft
Survey Program: 0-MWD													Offset Well Error:	0.0 ft
Measured Depth (ft)	Vertical Depth (ft)	Measured Depth (ft)	Vertical Depth (ft)	Reference (ft)	Offset (ft)	Semi Major Axis Highside Toolface (°)	Offset Wellbore Centre +N/-S (ft)	+E/-W (ft)	Distance Between Centres (ft)	Between Ellipses (ft)	Minimum Separation (ft)	Separation Factor	Warning	
0.0	0.0	0.0	0.0	0.0	0.0	86.57	7.3	121.5	122.0					
50.0	50.0	41.0	41.0	0.1	0.0	86.57	7.3	121.5	121.7	121.6	0.10	1,188.396		
100.0	100.0	91.0	91.0	0.1	0.1	86.57	7.3	121.5	121.7	121.5	0.21	566.805		
150.0	150.0	141.0	141.0	0.2	0.2	86.57	7.3	121.5	121.7	121.2	0.43	283.426		
200.0	200.0	191.0	191.0	0.3	0.3	86.57	7.3	121.5	121.7	121.0	0.65	186.029		
250.0	250.0	241.0	241.0	0.4	0.4	86.57	7.3	121.5	121.7	120.8	0.88	138.451		
300.0	300.0	291.0	291.0	0.6	0.5	86.57	7.3	121.5	121.7	120.6	1.10	110.253		
350.0	350.0	341.0	341.0	0.7	0.7	86.57	7.3	121.5	121.7	120.3	1.33	91.598		
400.0	400.0	391.0	391.0	0.8	0.8	86.57	7.3	121.5	121.7	120.1	1.55	78.342		
450.0	450.0	441.0	441.0	0.9	0.9	86.57	7.3	121.5	121.7	119.9	1.78	68.438		
500.0	500.0	491.0	491.0	1.0	1.0	86.57	7.3	121.5	121.7	119.7	2.00	60.757		
550.0	550.0	541.0	541.0	1.1	1.1	86.57	7.3	121.5	121.7	119.4	2.23	54.626		
600.0	600.0	591.0	591.0	1.2	1.2	86.57	7.3	121.5	121.7	119.2	2.45	49.619 CC, ES		
650.0	650.0	641.0	641.0	1.3	1.3	150.20	7.3	121.5	122.0	119.3	2.67	45.606		
700.0	700.0	691.0	691.0	1.5	1.4	150.42	7.3	121.5	122.8	119.9	2.90	42.393		
750.0	750.0	741.0	741.0	1.6	1.6	150.78	7.3	121.5	124.2	121.1	3.12	39.833		
800.0	799.9	790.9	790.9	1.7	1.7	151.27	7.3	121.5	126.2	122.9	3.34	37.790		
850.0	849.8	840.8	840.8	1.8	1.8	151.88	7.3	121.5	128.8	125.3	3.57	36.136		
900.0	899.7	890.7	890.7	1.9	1.9	152.60	7.3	121.5	132.0	128.2	3.79	34.841		
950.0	949.5	940.5	940.5	2.0	2.0	153.40	7.3	121.5	135.8	131.8	4.02	33.818		
1,000.0	999.3	990.3	990.3	2.1	2.1	154.26	7.3	121.5	140.2	136.0	4.24	33.057		
1,050.0	1,049.0	1,040.0	1,040.0	2.3	2.2	155.18	7.3	121.5	145.2	140.8	4.47	32.492		
1,100.0	1,098.6	1,089.6	1,089.6	2.4	2.3	156.13	7.3	121.5	150.9	146.2	4.70	32.128		
1,150.0	1,148.1	1,139.1	1,139.1	2.6	2.4	157.11	7.3	121.5	157.2	152.3	4.93	31.908		
1,200.0	1,197.5	1,188.5	1,188.5	2.7	2.6	158.08	7.3	121.5	164.1	159.0	5.15	31.848 SF		
1,250.0	1,246.9	1,237.2	1,237.2	2.9	2.7	158.99	7.4	121.5	171.8	166.4	5.38	31.920		
1,300.0	1,296.1	1,285.5	1,285.5	3.0	2.8	159.69	8.1	121.9	180.4	174.7	5.61	32.159		
1,350.0	1,345.2	1,333.7	1,333.7	3.2	2.9	160.22	9.3	122.6	189.8	183.9	5.84	32.507		
1,400.0	1,394.2	1,381.7	1,381.7	3.4	3.0	160.59	11.1	123.6	200.0	194.0	6.06	32.984		
1,450.0	1,443.0	1,429.5	1,429.4	3.6	3.1	160.82	13.3	124.8	211.1	204.8	6.29	33.541		
1,500.0	1,491.8	1,477.2	1,476.9	3.8	3.2	160.96	16.1	126.3	222.8	216.3	6.53	34.136		
1,550.0	1,540.5	1,524.7	1,524.3	4.0	3.3	160.94	19.4	128.1	234.7	227.9	6.77	34.686		
1,600.0	1,589.3	1,572.2	1,571.6	4.2	3.4	160.80	23.1	130.2	246.7	239.7	7.00	35.248		
1,650.0	1,638.0	1,619.5	1,618.6	4.4	3.5	160.54	27.4	132.6	259.1	251.8	7.24	35.783		
1,700.0	1,686.8	1,666.6	1,665.5	4.6	3.6	160.19	32.2	135.3	271.6	264.1	7.49	36.255		
1,750.0	1,735.6	1,713.6	1,712.1	4.9	3.8	159.76	37.4	138.2	284.4	276.6	7.74	36.723		
1,800.0	1,784.3	1,760.5	1,758.5	5.1	3.9	159.26	43.2	141.4	297.4	289.4	8.00	37.159		
1,850.0	1,833.1	1,807.1	1,804.6	5.3	4.0	158.70	49.4	144.8	310.7	302.4	8.27	37.579		
1,900.0	1,881.8	1,855.0	1,851.9	5.5	4.1	158.12	56.1	148.5	324.1	315.6	8.54	37.948		
1,950.0	1,930.6	1,903.1	1,899.3	5.8	4.3	157.57	62.8	152.2	337.6	328.8	8.82	38.287		
2,000.0	1,979.4	1,951.2	1,946.8	6.0	4.4	157.07	69.5	156.0	351.1	342.0	9.10	38.587		
2,050.0	2,028.1	1,999.2	1,994.2	6.2	4.6	156.61	76.2	159.7	364.6	355.2	9.38	38.863		
2,100.0	2,076.9	2,047.3	2,041.6	6.5	4.7	156.18	82.9	163.4	378.1	368.5	9.67	39.103		
2,150.0	2,125.6	2,095.3	2,089.1	6.7	4.9	155.78	89.6	167.1	391.7	381.7	9.96	39.331		

Company:	Clear Creek Resource Partners	Local Co-ordinate Reference:	Well True Ranch Fee 503-2326H
Project:	SEC.23-T15N-R65W	TVD Reference:	WELL @ 5881.0ft (Original Well Elev)
Reference Site:	True Ranch Fee 2326H East Pad Sec.23-T15N-R65W	MD Reference:	WELL @ 5881.0ft (Original Well Elev)
Site Error:	0.0 ft	North Reference:	True
Reference Well:	True Ranch Fee 503-2326H	Survey Calculation Method:	Minimum Curvature
Well Error:	0.0 ft	Output errors are at	2.00 sigma
Reference Wellbore	Wellbore #1	Database:	US_EDM
Reference Design:	Plan #1 (1-29-18)	Offset TVD Reference:	Offset Datum

Offset Design True Ranch Fee 2326H East Pad Sec.23-T15N-R65W - True Ranch Fee 502-2326H - Wellbore #1 - Pla													Offset Site Error:	0.0 ft
Survey Program: 0-MWD													Offset Well Error:	0.0 ft
Measured Depth (ft)	Vertical Depth (ft)	Measured Depth (ft)	Vertical Depth (ft)	Reference (ft)	Offset (ft)	Highside Toolface (°)	Offset Wellbore Centre +N/-S (ft)	+E/-W (ft)	Between Centres (ft)	Between Ellipses (ft)	Minimum Separation (ft)	Separation Factor	Warning	
0.0	0.0	0.0	0.0	0.0	0.0	86.57	3.6	60.7	61.0					
50.0	50.0	46.0	46.0	0.1	0.1	86.57	3.6	60.7	60.8	60.7	0.11	563.334		
100.0	100.0	96.0	96.0	0.1	0.1	86.57	3.6	60.7	60.8	60.6	0.22	276.185		
150.0	150.0	146.0	146.0	0.2	0.2	86.57	3.6	60.7	60.8	60.4	0.44	138.097		
200.0	200.0	196.0	196.0	0.3	0.3	86.57	3.6	60.7	60.8	60.2	0.67	91.443		
250.0	250.0	246.0	246.0	0.4	0.4	86.57	3.6	60.7	60.8	59.9	0.89	68.351		
300.0	300.0	296.0	296.0	0.6	0.6	86.57	3.6	60.7	60.8	59.7	1.11	54.571		
350.0	350.0	346.0	346.0	0.7	0.7	86.57	3.6	60.7	60.8	59.5	1.34	45.415		
400.0	400.0	396.0	396.0	0.8	0.8	86.57	3.6	60.7	60.8	59.3	1.56	38.890		
450.0	450.0	446.0	446.0	0.9	0.9	86.57	3.6	60.7	60.8	59.0	1.79	34.004		
500.0	500.0	496.0	496.0	1.0	1.0	86.57	3.6	60.7	60.8	58.8	2.01	30.209		
550.0	550.0	546.0	546.0	1.1	1.1	86.57	3.6	60.7	60.8	58.6	2.24	27.176		
600.0	600.0	596.0	596.0	1.2	1.2	86.57	3.6	60.7	60.8	58.4	2.46	24.696 CC, ES		
650.0	650.0	646.0	646.0	1.3	1.3	150.28	3.6	60.7	61.1	58.4	2.69	22.761		
700.0	700.0	696.0	696.0	1.5	1.5	150.72	3.6	60.7	62.0	59.1	2.91	21.310		
750.0	750.0	746.0	746.0	1.6	1.6	151.43	3.6	60.7	63.4	60.3	3.13	20.257		
800.0	799.9	795.9	795.9	1.7	1.7	152.38	3.6	60.7	65.4	62.1	3.35	19.519		
850.0	849.8	845.8	845.8	1.8	1.8	153.51	3.6	60.7	68.1	64.5	3.58	19.027		
900.0	899.7	895.7	895.7	1.9	1.9	154.78	3.6	60.7	71.3	67.5	3.80	18.758		
950.0	949.5	945.5	945.5	2.0	2.0	156.13	3.6	60.7	75.2	71.1	4.03	18.663		
1,000.0	999.3	995.3	995.3	2.1	2.1	157.53	3.6	60.7	79.7	75.4	4.25	18.734		
1,050.0	1,049.0	1,045.6	1,045.6	2.3	2.2	158.81	3.9	60.6	84.7	80.2	4.48	18.897		
1,100.0	1,098.6	1,096.0	1,096.0	2.4	2.3	159.76	4.7	60.1	89.9	85.2	4.71	19.104		
1,150.0	1,148.1	1,146.5	1,146.4	2.6	2.5	160.43	6.0	59.2	95.3	90.4	4.93	19.328		
1,200.0	1,197.5	1,197.0	1,196.9	2.7	2.6	160.86	7.9	58.0	101.0	95.8	5.16	19.580		
1,250.0	1,246.9	1,247.5	1,247.4	2.9	2.7	161.08	10.4	56.4	106.8	101.4	5.39	19.826		
1,300.0	1,296.1	1,298.1	1,297.8	3.0	2.8	161.13	13.4	54.4	112.8	107.2	5.62	20.093		
1,350.0	1,345.2	1,348.7	1,348.3	3.2	2.9	161.02	17.0	52.1	119.0	113.2	5.85	20.343		
1,400.0	1,394.2	1,399.4	1,398.7	3.4	3.0	160.79	21.2	49.4	125.4	119.4	6.09	20.610		
1,450.0	1,443.0	1,450.0	1,449.0	3.6	3.2	160.44	25.9	46.3	132.0	125.7	6.33	20.856		
1,500.0	1,491.8	1,500.8	1,499.3	3.8	3.3	160.00	31.2	42.9	138.5	132.0	6.58	21.057		
1,550.0	1,540.5	1,551.6	1,549.6	4.0	3.4	159.39	37.0	39.1	144.6	137.8	6.84	21.136		
1,600.0	1,589.3	1,602.4	1,599.9	4.2	3.6	158.62	43.4	35.0	150.3	143.2	7.10	21.159		
1,650.0	1,638.0	1,653.3	1,650.2	4.4	3.7	157.71	50.4	30.4	155.6	148.3	7.38	21.093		
1,700.0	1,686.8	1,703.1	1,699.2	4.6	3.9	156.78	57.6	25.8	160.8	153.1	7.67	20.967		
1,750.0	1,735.6	1,752.8	1,748.1	4.9	4.0	155.91	64.7	21.2	165.9	158.0	7.96	20.842		
1,800.0	1,784.3	1,802.4	1,797.1	5.1	4.2	155.08	71.8	16.6	171.1	162.9	8.26	20.720		
1,850.0	1,833.1	1,852.1	1,846.0	5.3	4.3	154.31	79.0	12.0	176.4	167.8	8.57	20.588		
1,900.0	1,881.8	1,901.8	1,894.9	5.5	4.5	153.58	86.1	7.4	181.7	172.8	8.88	20.466		
1,950.0	1,930.6	1,951.4	1,943.9	5.8	4.7	152.89	93.2	2.7	186.9	177.8	9.19	20.336		
2,000.0	1,979.4	2,001.1	1,992.8	6.0	4.8	152.24	100.4	-1.9	192.3	182.8	9.51	20.211		
2,050.0	2,028.1	2,050.8	2,041.7	6.2	5.0	151.63	107.5	-6.5	197.6	187.8	9.84	20.084		
2,100.0	2,076.9	2,100.5	2,090.7	6.5	5.2	151.05	114.6	-11.1	203.0	192.8	10.17	19.962		
2,150.0	2,125.6	2,150.1	2,139.6	6.7	5.4	150.50	121.8	-15.7	208.4	197.9	10.50	19.839		
2,200.0	2,174.4	2,199.8	2,188.6	6.9	5.5	149.97	128.9	-20.3	213.8	202.9	10.84	19.722		
2,250.0	2,223.2	2,249.5	2,237.5	7.2	5.7	149.47	136.0	-25.0	219.2	208.0	11.18	19.605		
2,300.0	2,271.9	2,299.1	2,286.4	7.4	5.9	149.00	143.2	-29.6	224.6	213.1	11.52	19.494		
2,350.0	2,320.7	2,348.8	2,335.4	7.6	6.1	148.55	150.3	-34.2	230.1	218.2	11.87	19.383		
2,400.0	2,369.4	2,398.5	2,384.3	7.9	6.2	148.11	157.4	-38.8	235.5	223.3	12.22	19.278		
2,450.0	2,418.2	2,448.1	2,433.3	8.1	6.4	147.70	164.6	-43.4	241.0	228.4	12.57	19.174		
2,500.0	2,467.0	2,497.8	2,482.2	8.3	6.6	147.31	171.7	-48.0	246.5	233.6	12.92	19.075		

CC - Min centre to center distance or convergent point, SF - min separation factor, ES - min ellipse separation

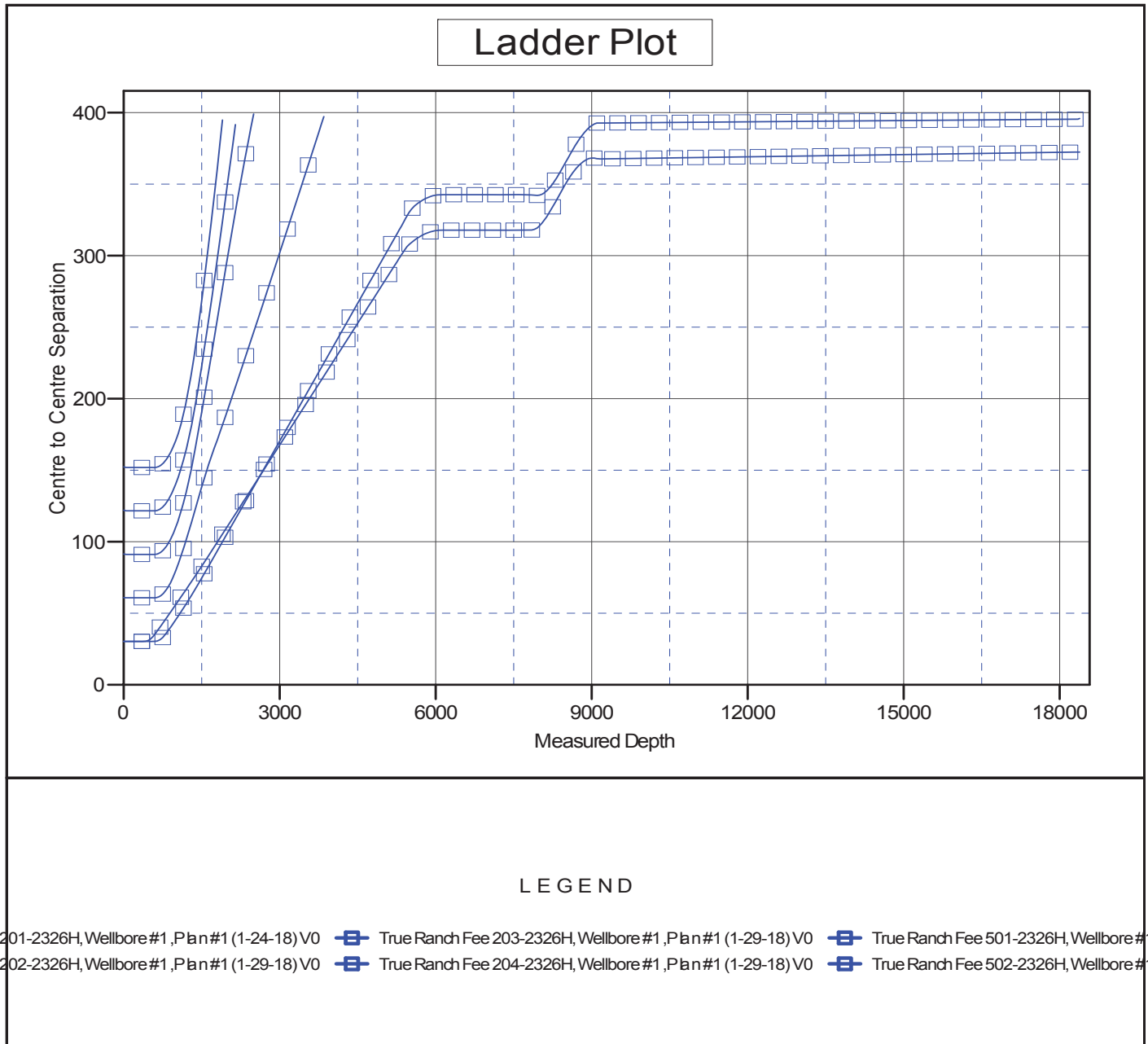
Company:	Clear Creek Resource Partners	Local Co-ordinate Reference:	Well True Ranch Fee 503-2326H
Project:	SEC.23-T15N-R65W	TVD Reference:	WELL @ 5881.0ft (Original Well Elev)
Reference Site:	True Ranch Fee 2326H East Pad Sec.23-T15N-R65W	MD Reference:	WELL @ 5881.0ft (Original Well Elev)
Site Error:	0.0 ft	North Reference:	True
Reference Well:	True Ranch Fee 503-2326H	Survey Calculation Method:	Minimum Curvature
Well Error:	0.0 ft	Output errors are at	2.00 sigma
Reference Wellbore	Wellbore #1	Database:	US_EDM
Reference Design:	Plan #1 (1-29-18)	Offset TVD Reference:	Offset Datum

Offset Design													Offset Site Error:	0.0 ft
Survey Program: 0-MWD													Offset Well Error:	0.0 ft
Reference		Offset		Semi Major Axis			Distance						Warning	
Measured Depth (ft)	Vertical Depth (ft)	Measured Depth (ft)	Vertical Depth (ft)	Reference (ft)	Offset (ft)	Highside Toolface (°)	Offset Wellbore Centre +N/-S (ft)	+E/-W (ft)	Between Centres (ft)	Between Ellipses (ft)	Minimum Separation (ft)	Separation Factor		
2,550.0	2,515.7	2,547.5	2,531.1	8.6	6.8	146.93	178.8	-52.7	252.0	238.7	13.28	18.977		
2,600.0	2,564.5	2,597.2	2,580.1	8.8	7.0	146.57	185.9	-57.3	257.5	243.9	13.64	18.884		
2,650.0	2,613.3	2,646.8	2,629.0	9.0	7.2	146.23	193.1	-61.9	263.0	249.0	14.00	18.793		
2,700.0	2,662.0	2,696.5	2,677.9	9.3	7.3	145.90	200.2	-66.5	268.5	254.2	14.36	18.706		
2,750.0	2,710.8	2,746.2	2,726.9	9.5	7.5	145.58	207.3	-71.1	274.1	259.4	14.72	18.621		
2,800.0	2,759.5	2,795.8	2,775.8	9.8	7.7	145.27	214.5	-75.7	279.6	264.5	15.08	18.539		
2,850.0	2,808.3	2,845.5	2,824.8	10.0	7.9	144.98	221.6	-80.4	285.2	269.7	15.45	18.459		
2,900.0	2,857.1	2,895.2	2,873.7	10.2	8.1	144.70	228.7	-85.0	290.7	274.9	15.82	18.383		
2,950.0	2,905.8	2,944.8	2,922.6	10.5	8.3	144.43	235.9	-89.6	296.3	280.1	16.18	18.308		
3,000.0	2,954.6	2,994.5	2,971.6	10.7	8.5	144.17	243.0	-94.2	301.9	285.3	16.55	18.237		
3,050.0	3,003.3	3,044.2	3,020.5	10.9	8.6	143.91	250.1	-98.8	307.4	290.5	16.92	18.167		
3,100.0	3,052.1	3,093.9	3,069.4	11.2	8.8	143.67	257.3	-103.4	313.0	295.7	17.29	18.100		
3,150.0	3,100.9	3,143.5	3,118.4	11.4	9.0	143.44	264.4	-108.1	318.6	301.0	17.67	18.035		
3,200.0	3,149.6	3,193.2	3,167.3	11.7	9.2	143.21	271.5	-112.7	324.2	306.2	18.04	17.972		
3,250.0	3,198.4	3,242.9	3,216.3	11.9	9.4	142.99	278.7	-117.3	329.8	311.4	18.41	17.911		
3,300.0	3,247.1	3,292.5	3,265.2	12.1	9.6	142.78	285.8	-121.9	335.4	316.6	18.79	17.852		
3,350.0	3,295.9	3,342.2	3,314.1	12.4	9.8	142.58	292.9	-126.5	341.0	321.9	19.16	17.794		
3,400.0	3,344.7	3,391.9	3,363.1	12.6	10.0	142.38	300.1	-131.1	346.6	327.1	19.54	17.739		
3,450.0	3,393.4	3,441.5	3,412.0	12.9	10.1	142.19	307.2	-135.8	352.2	332.3	19.92	17.685		
3,500.0	3,442.2	3,491.2	3,461.0	13.1	10.3	142.00	314.3	-140.4	357.9	337.6	20.30	17.633		
3,550.0	3,490.9	3,540.9	3,509.9	13.3	10.5	141.82	321.5	-145.0	363.5	342.8	20.67	17.582		
3,600.0	3,539.7	3,590.6	3,558.8	13.6	10.7	141.65	328.6	-149.6	369.1	348.1	21.05	17.533		
3,650.0	3,588.5	3,640.2	3,607.8	13.8	10.9	141.48	335.7	-154.2	374.7	353.3	21.43	17.485		
3,700.0	3,637.2	3,689.9	3,656.7	14.1	11.1	141.31	342.8	-158.8	380.4	358.6	21.81	17.439		
3,750.0	3,686.0	3,739.6	3,705.6	14.3	11.3	141.16	350.0	-163.5	386.0	363.8	22.19	17.394		
3,800.0	3,734.7	3,789.2	3,754.6	14.5	11.5	141.00	357.1	-168.1	391.7	369.1	22.57	17.351		
3,850.0	3,783.5	3,838.9	3,803.5	14.8	11.7	140.85	364.2	-172.7	397.3	374.3	22.95	17.308 SF		

Company:	Clear Creek Resource Partners	Local Co-ordinate Reference:	Well True Ranch Fee 503-2326H
Project:	SEC.23-T15N-R65W	TVD Reference:	WELL @ 5881.0ft (Original Well Elev)
Reference Site:	True Ranch Fee 2326H East Pad Sec.23-T15N-R65W	MD Reference:	WELL @ 5881.0ft (Original Well Elev)
Site Error:	0.0 ft	North Reference:	True
Reference Well:	True Ranch Fee 503-2326H	Survey Calculation Method:	Minimum Curvature
Well Error:	0.0 ft	Output errors are at	2.00 sigma
Reference Wellbore	Wellbore #1	Database:	US_EDM
Reference Design:	Plan #1 (1-29-18)	Offset TVD Reference:	Offset Datum

Reference Depths are relative to WELL @ 5881.0ft (Original Well Elev)
Offset Depths are relative to Offset Datum
Central Meridian is -105.500000

Coordinates are relative to: True Ranch Fee 503-2326H
Coordinate System is US State Plane 1983, Colorado Northern Zone
Grid Convergence at Surface is: 0.57°



Company:	Clear Creek Resource Partners	Local Co-ordinate Reference:	Well True Ranch Fee 503-2326H
Project:	SEC.23-T15N-R65W	TVD Reference:	WELL @ 5881.0ft (Original Well Elev)
Reference Site:	True Ranch Fee 2326H East Pad Sec.23-T15N-R65W	MD Reference:	WELL @ 5881.0ft (Original Well Elev)
Site Error:	0.0 ft	North Reference:	True
Reference Well:	True Ranch Fee 503-2326H	Survey Calculation Method:	Minimum Curvature
Well Error:	0.0 ft	Output errors are at	2.00 sigma
Reference Wellbore	Wellbore #1	Database:	US_EDM
Reference Design:	Plan #1 (1-29-18)	Offset TVD Reference:	Offset Datum

Reference Depths are relative to WELL @ 5881.0ft (Original Well Elev)

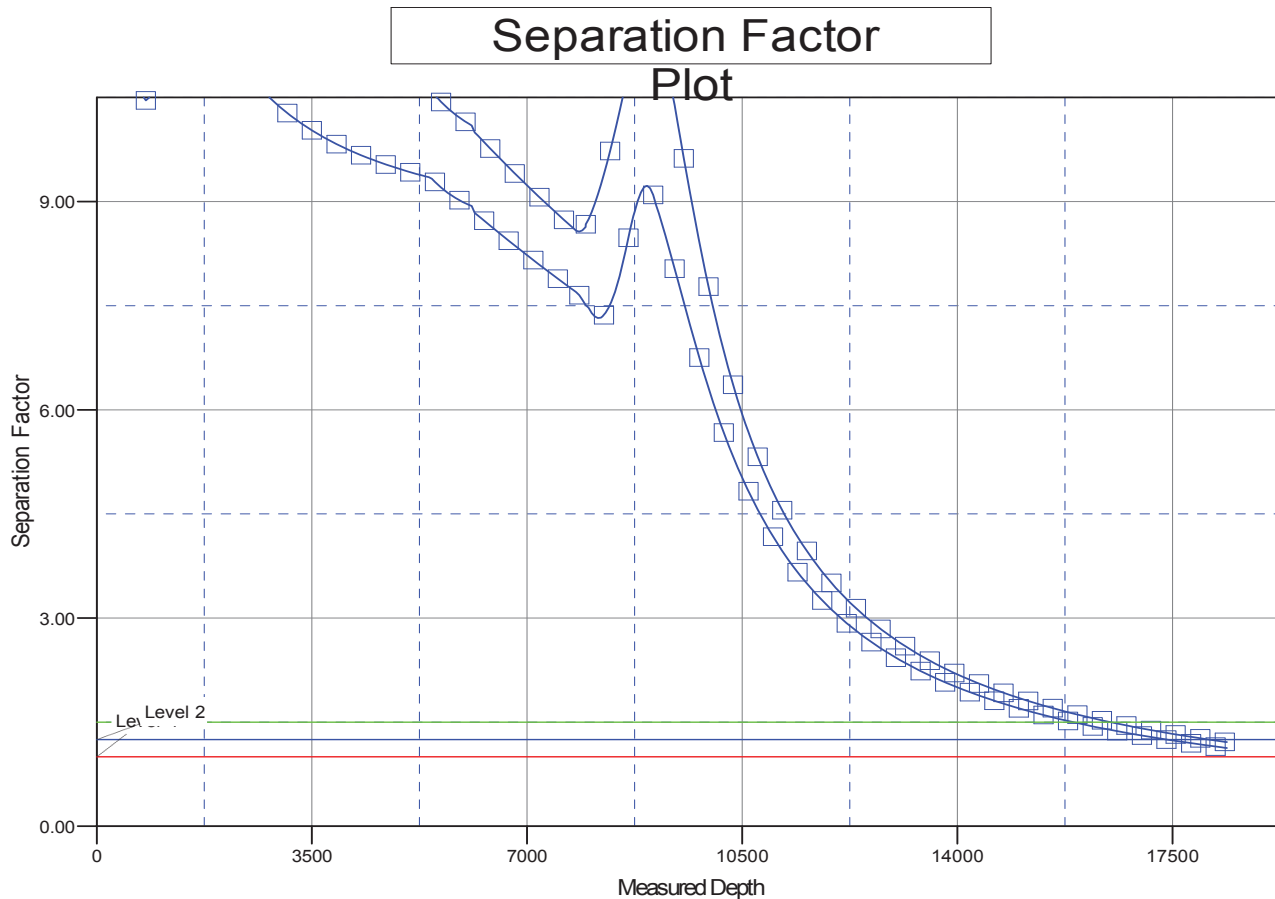
Offset Depths are relative to Offset Datum

Central Meridian is -105.500000





Coordinates are relative to: True Ranch Fee 503-2326H

Coordinate System is US State Plane 1983, Colorado Northern Zone

Grid Convergence at Surface is: 0.57°



LEGEND

201-2326H, Wellbore #1, Plan #1 (1-24-18) VO		True Ranch Fee 203-2326H, Wellbore #1, Plan #1 (1-29-18) VO		True Ranch Fee 501-2326H, Wellbore #1, Plan #1 (1-29-18) VO
202-2326H, Wellbore #1, Plan #1 (1-29-18) VO		True Ranch Fee 204-2326H, Wellbore #1, Plan #1 (1-29-18) VO		True Ranch Fee 502-2326H, Wellbore #1, Plan #1 (1-29-18) VO