

# Weld County, Colorado

## Section 06-T07N-R64W

### Dotsero 6-14-02L

### plan1

#### Section Details

Sec	MD	Inc	Azi	TVD	+N/-S	+E/-W	Dleg	VSect	Annotation
1	0.00	0.00	0.00	0.00	0.00	0.00	0.00	0.00	
2	3000.00	0.00	0.00	3000.00	0.00	0.00	0.00	0.00	KOP Begin 2°/100' build
3	3850.38	17.01	141.65	3837.95	-98.25	77.74	2.00	-69.43	Begin 17.01° tangent
4	6607.91	17.01	141.65	6474.88	-730.78	578.21	0.00	-516.43	Begin 10°/100' build/turn
5	7614.06	90.00	270.68	7135.00	-880.91	13.23	10.00	58.95	Begin 90.00° lateral
6	16991.76	90.00	270.68	7135.00	-769.34	-9363.80	0.00	9395.36	PBHL/TD 16991.76 MD/7135.00 TVD

#### DESIGN TARGET DETAILS

Name	TVD	+N/-S	+E/-W	Northing	Easting	Latitude	Longitude
Dotsero 6-14-02L LP 470 FSL 470 FEL	7135.00	-880.91	13.23	14744022.81	1755760.44	40.59594039	-104.58449891
Dotsero 6-14-02L PBHL 4810 FNL 470 FWL	7135.00	-769.34	-9363.80	14744090.13	1746383.00	40.59624181	-104.61827732

#### Azimuth Corrections:

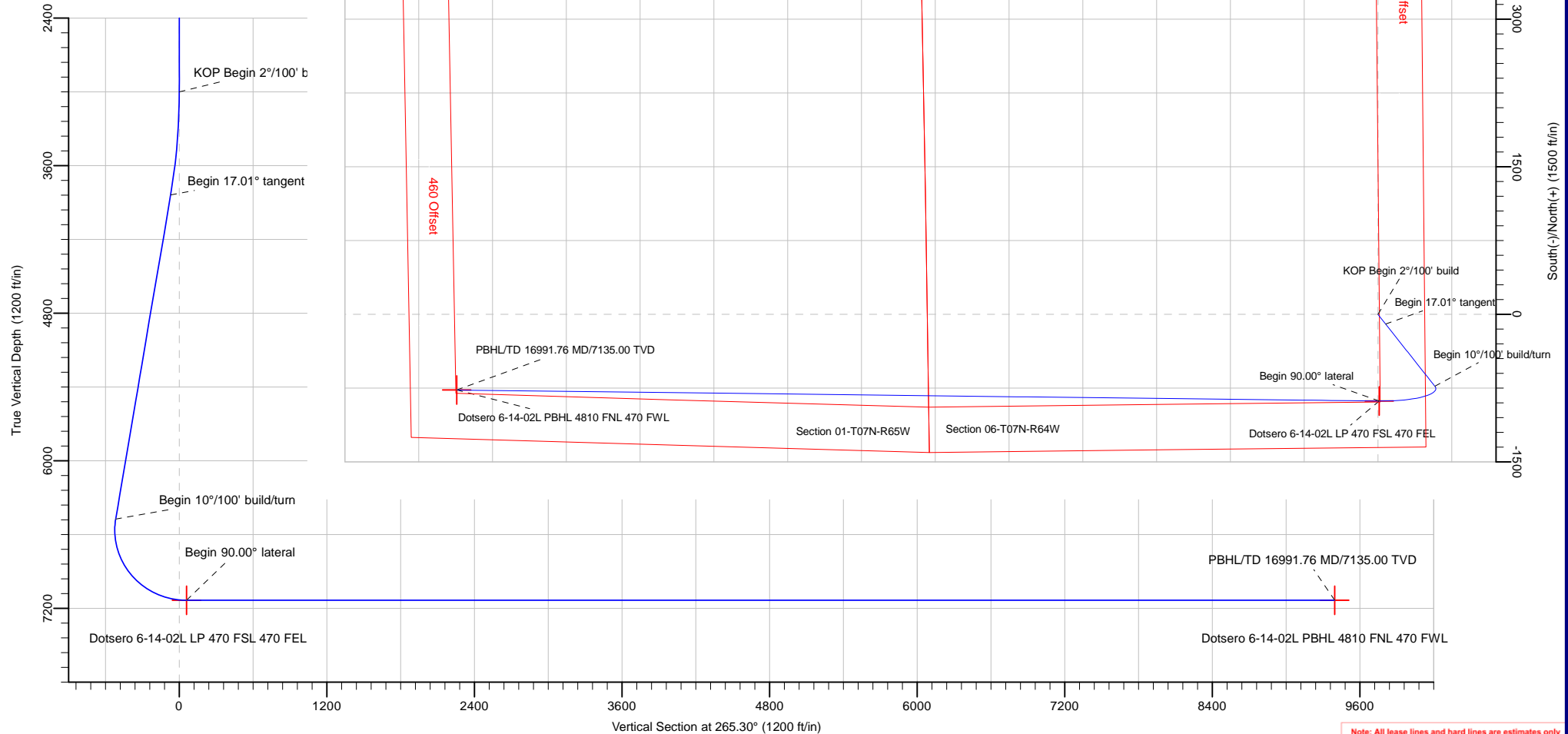
To convert a Magnetic Direction to a True Direction, Add 7.98° East

Dotsero 6-14-02L			
Surf loc: 1351 FSL 475 FEL Section 06-T07N-R64W			
NAD83 Colorado - HARN			
Universal Transverse Mercator (US Survey Feet)			
Zone 13N (108 W to 102 W)			
RKB=4995+24 @ 5019.00ft			
Northing	Easting	Latitude	Longitude
14744903.65	1755743.05	40.59835926	-104.58454658



Azimuths to True North  
Magnetic North: 7.98°

Magnetic Field  
Strength: 52358.5snT  
Dip Angle: 66.98°  
Date: 2/19/2018  
Model: HDGM



<b>Database:</b>	DB_Jul2216dt_v14	<b>Local Co-ordinate Reference:</b>	Well Dotsero 6-14-02L
<b>Company:</b>	Confluence Resources	<b>TVD Reference:</b>	RKB=4995+24 @ 5019.00ft
<b>Project:</b>	Weld County, Colorado	<b>MD Reference:</b>	RKB=4995+24 @ 5019.00ft
<b>Site:</b>	Section 06-T07N-R64W	<b>North Reference:</b>	True
<b>Well:</b>	Dotsero 6-14-02L	<b>Survey Calculation Method:</b>	Minimum Curvature
<b>Wellbore:</b>	Original Hole		
<b>Design:</b>	plan1		

<b>Project</b>	Weld County, Colorado		
<b>Map System:</b>	Universal Transverse Mercator (US Survey Feet)	<b>System Datum:</b>	Mean Sea Level
<b>Geo Datum:</b>	NAD83 Colorado - HARN		
<b>Map Zone:</b>	Zone 13N (108 W to 102 W)		

Site		Section 06-T07N-R64W			
Site Position:		Northing:	14,746,184.54 usft	Latitude:	40.60187654
From:	Map	Easting:	1,755,730.03 usft	Longitude:	-104.58457171
Position Uncertainty:	0.00 ft	Slot Radius:	13-3/16 "	Grid Convergence:	0.27 °

Well	Dotsero 6-14-02L, Surf loc: 1351 FSL 475 FEL Section 06-T07N-R64W					
Well Position	+N/-S	-1,280.94 ft	Northing:	14,744,903.65 usft	Latitude:	40.59835926
	+E/-W	6.98 ft	Easting:	1,755,743.05 usft	Longitude:	-104.58454658
Position Uncertainty		0.00 ft	Wellhead Elevation:		Ground Level:	4,995.00 ft

<b>Wellbore</b>	Original Hole				
<b>Magnetics</b>	<b>Model Name</b>	<b>Sample Date</b>	<b>Declination (°)</b>	<b>Dip Angle (°)</b>	<b>Field Strength (nT)</b>
	HDGM	2/19/2018	7.98	66.98	52,358.50000000

<b>Design</b>	plan1			
<b>Audit Notes:</b>				
<b>Version:</b>	<b>Phase:</b>	PLAN	<b>Tie On Depth:</b>	0.00
<b>Vertical Section:</b>	<b>Depth From (TVD) (ft)</b>	<b>+N/-S (ft)</b>	<b>+E/-W (ft)</b>	<b>Direction (°)</b>
	0.00	0.00	0.00	265.30

<b>Plan Survey Tool Program</b>	<b>Date</b>	2/19/2018		
<b>Depth From (ft)</b>	<b>Depth To (ft)</b>	<b>Survey (Wellbore)</b>	<b>Tool Name</b>	<b>Remarks</b>
1	0.00	16,991.76	plan1 (Original Hole)	

<b>Plan Sections</b>										
<b>Measured Depth (ft)</b>	<b>Inclination (°)</b>	<b>Azimuth (°)</b>	<b>Vertical Depth (ft)</b>	<b>+N/-S (ft)</b>	<b>+E/-W (ft)</b>	<b>Dogleg Rate (°/100ft)</b>	<b>Build Rate (°/100ft)</b>	<b>Turn Rate (°/100ft)</b>	<b>TFO (°)</b>	<b>Target</b>
0.00	0.00	0.00	0.00	0.00	0.00	0.00	0.00	0.00	0.00	
3,000.00	0.00	0.00	3,000.00	0.00	0.00	0.00	0.00	0.00	0.00	
3,850.38	17.01	141.65	3,837.95	-98.25	77.74	2.00	2.00	0.00	141.65	
6,607.91	17.01	141.65	6,474.88	-730.78	578.21	0.00	0.00	0.00	0.00	
7,614.06	90.00	270.68	7,135.00	-880.91	13.23	10.00	7.25	12.82	127.79	Dotsero 6-14-02L LP
16,991.76	90.00	270.68	7,135.00	-769.34	-9,363.80	0.00	0.00	0.00	0.00	Dotsero 6-14-02L PBI

<b>Database:</b>	DB_Jul2216dt_v14	<b>Local Co-ordinate Reference:</b>	Well Dotsero 6-14-02L
<b>Company:</b>	Confluence Resources	<b>TVD Reference:</b>	RKB=4995+24 @ 5019.00ft
<b>Project:</b>	Weld County, Colorado	<b>MD Reference:</b>	RKB=4995+24 @ 5019.00ft
<b>Site:</b>	Section 06-T07N-R64W	<b>North Reference:</b>	True
<b>Well:</b>	Dotsero 6-14-02L	<b>Survey Calculation Method:</b>	Minimum Curvature
<b>Wellbore:</b>	Original Hole		
<b>Design:</b>	plan1		

Planned Survey									
Measured Depth (ft)	Inclination (°)	Azimuth (°)	Vertical Depth (ft)	+N/-S (ft)	+E/-W (ft)	Vertical Section (ft)	Dogleg Rate (°/100ft)	Build Rate (°/100ft)	Turn Rate (°/100ft)
0.00	0.00	0.00	0.00	0.00	0.00	0.00	0.00	0.00	0.00
100.00	0.00	0.00	100.00	0.00	0.00	0.00	0.00	0.00	0.00
200.00	0.00	0.00	200.00	0.00	0.00	0.00	0.00	0.00	0.00
300.00	0.00	0.00	300.00	0.00	0.00	0.00	0.00	0.00	0.00
400.00	0.00	0.00	400.00	0.00	0.00	0.00	0.00	0.00	0.00
500.00	0.00	0.00	500.00	0.00	0.00	0.00	0.00	0.00	0.00
600.00	0.00	0.00	600.00	0.00	0.00	0.00	0.00	0.00	0.00
700.00	0.00	0.00	700.00	0.00	0.00	0.00	0.00	0.00	0.00
800.00	0.00	0.00	800.00	0.00	0.00	0.00	0.00	0.00	0.00
900.00	0.00	0.00	900.00	0.00	0.00	0.00	0.00	0.00	0.00
1,000.00	0.00	0.00	1,000.00	0.00	0.00	0.00	0.00	0.00	0.00
1,100.00	0.00	0.00	1,100.00	0.00	0.00	0.00	0.00	0.00	0.00
1,200.00	0.00	0.00	1,200.00	0.00	0.00	0.00	0.00	0.00	0.00
1,300.00	0.00	0.00	1,300.00	0.00	0.00	0.00	0.00	0.00	0.00
1,400.00	0.00	0.00	1,400.00	0.00	0.00	0.00	0.00	0.00	0.00
1,500.00	0.00	0.00	1,500.00	0.00	0.00	0.00	0.00	0.00	0.00
1,600.00	0.00	0.00	1,600.00	0.00	0.00	0.00	0.00	0.00	0.00
1,700.00	0.00	0.00	1,700.00	0.00	0.00	0.00	0.00	0.00	0.00
1,800.00	0.00	0.00	1,800.00	0.00	0.00	0.00	0.00	0.00	0.00
1,900.00	0.00	0.00	1,900.00	0.00	0.00	0.00	0.00	0.00	0.00
2,000.00	0.00	0.00	2,000.00	0.00	0.00	0.00	0.00	0.00	0.00
2,100.00	0.00	0.00	2,100.00	0.00	0.00	0.00	0.00	0.00	0.00
2,200.00	0.00	0.00	2,200.00	0.00	0.00	0.00	0.00	0.00	0.00
2,300.00	0.00	0.00	2,300.00	0.00	0.00	0.00	0.00	0.00	0.00
2,400.00	0.00	0.00	2,400.00	0.00	0.00	0.00	0.00	0.00	0.00
2,500.00	0.00	0.00	2,500.00	0.00	0.00	0.00	0.00	0.00	0.00
2,600.00	0.00	0.00	2,600.00	0.00	0.00	0.00	0.00	0.00	0.00
2,700.00	0.00	0.00	2,700.00	0.00	0.00	0.00	0.00	0.00	0.00
2,800.00	0.00	0.00	2,800.00	0.00	0.00	0.00	0.00	0.00	0.00
2,900.00	0.00	0.00	2,900.00	0.00	0.00	0.00	0.00	0.00	0.00
3,000.00	0.00	0.00	3,000.00	0.00	0.00	0.00	0.00	0.00	0.00
KOP Begin 2°/100' build									
3,100.00	2.00	141.65	3,099.98	-1.37	1.08	-0.97	2.00	2.00	0.00
3,200.00	4.00	141.65	3,199.84	-5.47	4.33	-3.87	2.00	2.00	0.00
3,300.00	6.00	141.65	3,299.45	-12.31	9.74	-8.70	2.00	2.00	0.00
3,400.00	8.00	141.65	3,398.70	-21.86	17.30	-15.45	2.00	2.00	0.00
3,500.00	10.00	141.65	3,497.47	-34.13	27.01	-24.12	2.00	2.00	0.00
3,600.00	12.00	141.65	3,595.62	-49.09	38.84	-34.69	2.00	2.00	0.00
3,700.00	14.00	141.65	3,693.06	-66.73	52.80	-47.16	2.00	2.00	0.00
3,800.00	16.00	141.65	3,789.64	-87.03	68.86	-61.50	2.00	2.00	0.00
3,850.38	17.01	141.65	3,837.95	-98.25	77.74	-69.43	2.00	2.00	0.00
Begin 17.01° tangent									
3,900.00	17.01	141.65	3,885.40	-109.64	86.75	-77.48	0.00	0.00	0.00
4,000.00	17.01	141.65	3,981.02	-132.57	104.90	-93.69	0.00	0.00	0.00
4,100.00	17.01	141.65	4,076.65	-155.51	123.04	-109.90	0.00	0.00	0.00
4,200.00	17.01	141.65	4,172.28	-178.45	141.19	-126.11	0.00	0.00	0.00
4,300.00	17.01	141.65	4,267.90	-201.39	159.34	-142.32	0.00	0.00	0.00
4,400.00	17.01	141.65	4,363.53	-224.33	177.49	-158.53	0.00	0.00	0.00
4,500.00	17.01	141.65	4,459.16	-247.26	195.64	-174.74	0.00	0.00	0.00
4,600.00	17.01	141.65	4,554.78	-270.20	213.79	-190.95	0.00	0.00	0.00
4,700.00	17.01	141.65	4,650.41	-293.14	231.94	-207.16	0.00	0.00	0.00
4,800.00	17.01	141.65	4,746.04	-316.08	250.09	-223.37	0.00	0.00	0.00
4,900.00	17.01	141.65	4,841.66	-339.02	268.24	-239.58	0.00	0.00	0.00

<b>Database:</b>	DB_Jul2216dt_v14	<b>Local Co-ordinate Reference:</b>	Well Dotsero 6-14-02L
<b>Company:</b>	Confluence Resources	<b>TVD Reference:</b>	RKB=4995+24 @ 5019.00ft
<b>Project:</b>	Weld County, Colorado	<b>MD Reference:</b>	RKB=4995+24 @ 5019.00ft
<b>Site:</b>	Section 06-T07N-R64W	<b>North Reference:</b>	True
<b>Well:</b>	Dotsero 6-14-02L	<b>Survey Calculation Method:</b>	Minimum Curvature
<b>Wellbore:</b>	Original Hole		
<b>Design:</b>	plan1		

Planned Survey									
Measured Depth (ft)	Inclination (°)	Azimuth (°)	Vertical Depth (ft)	+N/-S (ft)	+E/-W (ft)	Vertical Section (ft)	Dogleg Rate (°/100ft)	Build Rate (°/100ft)	Turn Rate (°/100ft)
5,000.00	17.01	141.65	4,937.29	-361.96	286.39	-255.79	0.00	0.00	0.00
5,100.00	17.01	141.65	5,032.92	-384.89	304.54	-272.00	0.00	0.00	0.00
5,200.00	17.01	141.65	5,128.54	-407.83	322.69	-288.21	0.00	0.00	0.00
5,300.00	17.01	141.65	5,224.17	-430.77	340.84	-304.42	0.00	0.00	0.00
5,400.00	17.01	141.65	5,319.80	-453.71	358.99	-320.63	0.00	0.00	0.00
5,500.00	17.01	141.65	5,415.42	-476.65	377.13	-336.84	0.00	0.00	0.00
5,600.00	17.01	141.65	5,511.05	-499.59	395.28	-353.05	0.00	0.00	0.00
5,700.00	17.01	141.65	5,606.67	-522.52	413.43	-369.26	0.00	0.00	0.00
5,800.00	17.01	141.65	5,702.30	-545.46	431.58	-385.47	0.00	0.00	0.00
5,900.00	17.01	141.65	5,797.93	-568.40	449.73	-401.68	0.00	0.00	0.00
6,000.00	17.01	141.65	5,893.55	-591.34	467.88	-417.89	0.00	0.00	0.00
6,100.00	17.01	141.65	5,989.18	-614.28	486.03	-434.10	0.00	0.00	0.00
6,200.00	17.01	141.65	6,084.81	-637.21	504.18	-450.31	0.00	0.00	0.00
6,300.00	17.01	141.65	6,180.43	-660.15	522.33	-466.52	0.00	0.00	0.00
6,400.00	17.01	141.65	6,276.06	-683.09	540.48	-482.73	0.00	0.00	0.00
6,500.00	17.01	141.65	6,371.69	-706.03	558.63	-498.94	0.00	0.00	0.00
6,600.00	17.01	141.65	6,467.31	-728.97	576.78	-515.15	0.00	0.00	0.00
6,607.91	17.01	141.65	6,474.88	-730.78	578.21	-516.43	0.00	0.00	0.00
Begin 10°/100' build/turn									
6,700.00	13.44	174.62	6,563.89	-752.04	587.59	-524.04	10.00	-3.88	35.81
6,800.00	15.85	213.86	6,660.86	-775.01	581.06	-515.64	10.00	2.41	39.24
6,900.00	22.76	236.19	6,755.31	-797.17	557.32	-490.17	10.00	6.91	22.33
7,000.00	31.32	247.70	6,844.35	-817.85	517.09	-448.39	10.00	8.56	11.51
7,100.00	40.50	254.53	6,925.29	-836.42	461.61	-391.57	10.00	9.18	6.83
7,200.00	49.95	259.16	6,995.67	-852.32	392.55	-321.44	10.00	9.45	4.63
7,300.00	59.54	262.65	7,053.33	-865.06	312.01	-240.12	10.00	9.59	3.49
7,400.00	69.20	265.50	7,096.55	-874.27	222.44	-150.10	10.00	9.66	2.86
7,500.00	78.91	268.01	7,123.99	-879.65	126.56	-54.11	10.00	9.71	2.51
7,600.00	88.63	270.36	7,134.83	-881.04	27.29	44.95	10.00	9.73	2.35
7,614.06	90.00	270.68	7,135.00	-880.91	13.23	58.95	10.00	9.73	2.31
Begin 90.00° lateral									
7,700.00	90.00	270.68	7,135.00	-879.89	-72.70	144.51	0.00	0.00	0.00
7,800.00	90.00	270.68	7,135.00	-878.70	-172.70	244.07	0.00	0.00	0.00
7,900.00	90.00	270.68	7,135.00	-877.51	-272.69	343.63	0.00	0.00	0.00
8,000.00	90.00	270.68	7,135.00	-876.32	-372.68	443.19	0.00	0.00	0.00
8,100.00	90.00	270.68	7,135.00	-875.13	-472.67	542.75	0.00	0.00	0.00
8,200.00	90.00	270.68	7,135.00	-873.94	-572.67	642.31	0.00	0.00	0.00
8,300.00	90.00	270.68	7,135.00	-872.75	-672.66	741.87	0.00	0.00	0.00
8,400.00	90.00	270.68	7,135.00	-871.56	-772.65	841.43	0.00	0.00	0.00
8,500.00	90.00	270.68	7,135.00	-870.37	-872.65	940.99	0.00	0.00	0.00
8,600.00	90.00	270.68	7,135.00	-869.18	-972.64	1,040.55	0.00	0.00	0.00
8,700.00	90.00	270.68	7,135.00	-867.99	-1,072.63	1,140.11	0.00	0.00	0.00
8,800.00	90.00	270.68	7,135.00	-866.80	-1,172.63	1,239.67	0.00	0.00	0.00
8,900.00	90.00	270.68	7,135.00	-865.61	-1,272.62	1,339.23	0.00	0.00	0.00
9,000.00	90.00	270.68	7,135.00	-864.42	-1,372.61	1,438.79	0.00	0.00	0.00
9,100.00	90.00	270.68	7,135.00	-863.24	-1,472.60	1,538.35	0.00	0.00	0.00
9,200.00	90.00	270.68	7,135.00	-862.05	-1,572.60	1,637.90	0.00	0.00	0.00
9,300.00	90.00	270.68	7,135.00	-860.86	-1,672.59	1,737.46	0.00	0.00	0.00
9,400.00	90.00	270.68	7,135.00	-859.67	-1,772.58	1,837.02	0.00	0.00	0.00
9,500.00	90.00	270.68	7,135.00	-858.48	-1,872.58	1,936.58	0.00	0.00	0.00
9,600.00	90.00	270.68	7,135.00	-857.29	-1,972.57	2,036.14	0.00	0.00	0.00
9,700.00	90.00	270.68	7,135.00	-856.10	-2,072.56	2,135.70	0.00	0.00	0.00
9,800.00	90.00	270.68	7,135.00	-854.91	-2,172.55	2,235.26	0.00	0.00	0.00
9,900.00	90.00	270.68	7,135.00	-853.72	-2,272.55	2,334.82	0.00	0.00	0.00

<b>Database:</b>	DB_Jul2216dt_v14	<b>Local Co-ordinate Reference:</b>	Well Dotsero 6-14-02L
<b>Company:</b>	Confluence Resources	<b>TVD Reference:</b>	RKB=4995+24 @ 5019.00ft
<b>Project:</b>	Weld County, Colorado	<b>MD Reference:</b>	RKB=4995+24 @ 5019.00ft
<b>Site:</b>	Section 06-T07N-R64W	<b>North Reference:</b>	True
<b>Well:</b>	Dotsero 6-14-02L	<b>Survey Calculation Method:</b>	Minimum Curvature
<b>Wellbore:</b>	Original Hole		
<b>Design:</b>	plan1		

Planned Survey									
Measured Depth (ft)	Inclination (°)	Azimuth (°)	Vertical Depth (ft)	+N/-S (ft)	+E/-W (ft)	Vertical Section (ft)	Dogleg Rate (°/100ft)	Build Rate (°/100ft)	Turn Rate (°/100ft)
10,000.00	90.00	270.68	7,135.00	-852.53	-2,372.54	2,434.38	0.00	0.00	0.00
10,100.00	90.00	270.68	7,135.00	-851.34	-2,472.53	2,533.94	0.00	0.00	0.00
10,200.00	90.00	270.68	7,135.00	-850.15	-2,572.53	2,633.50	0.00	0.00	0.00
10,300.00	90.00	270.68	7,135.00	-848.96	-2,672.52	2,733.06	0.00	0.00	0.00
10,400.00	90.00	270.68	7,135.00	-847.77	-2,772.51	2,832.62	0.00	0.00	0.00
10,500.00	90.00	270.68	7,135.00	-846.58	-2,872.51	2,932.18	0.00	0.00	0.00
10,600.00	90.00	270.68	7,135.00	-845.39	-2,972.50	3,031.74	0.00	0.00	0.00
10,700.00	90.00	270.68	7,135.00	-844.20	-3,072.49	3,131.30	0.00	0.00	0.00
10,800.00	90.00	270.68	7,135.00	-843.01	-3,172.48	3,230.86	0.00	0.00	0.00
10,900.00	90.00	270.68	7,135.00	-841.82	-3,272.48	3,330.42	0.00	0.00	0.00
11,000.00	90.00	270.68	7,135.00	-840.63	-3,372.47	3,429.98	0.00	0.00	0.00
11,100.00	90.00	270.68	7,135.00	-839.44	-3,472.46	3,529.54	0.00	0.00	0.00
11,200.00	90.00	270.68	7,135.00	-838.25	-3,572.46	3,629.10	0.00	0.00	0.00
11,300.00	90.00	270.68	7,135.00	-837.06	-3,672.45	3,728.66	0.00	0.00	0.00
11,400.00	90.00	270.68	7,135.00	-835.87	-3,772.44	3,828.22	0.00	0.00	0.00
11,500.00	90.00	270.68	7,135.00	-834.68	-3,872.43	3,927.78	0.00	0.00	0.00
11,600.00	90.00	270.68	7,135.00	-833.49	-3,972.43	4,027.34	0.00	0.00	0.00
11,700.00	90.00	270.68	7,135.00	-832.30	-4,072.42	4,126.90	0.00	0.00	0.00
11,800.00	90.00	270.68	7,135.00	-831.11	-4,172.41	4,226.46	0.00	0.00	0.00
11,900.00	90.00	270.68	7,135.00	-829.92	-4,272.41	4,326.02	0.00	0.00	0.00
12,000.00	90.00	270.68	7,135.00	-828.73	-4,372.40	4,425.58	0.00	0.00	0.00
12,100.00	90.00	270.68	7,135.00	-827.54	-4,472.39	4,525.14	0.00	0.00	0.00
12,200.00	90.00	270.68	7,135.00	-826.35	-4,572.38	4,624.70	0.00	0.00	0.00
12,300.00	90.00	270.68	7,135.00	-825.16	-4,672.38	4,724.26	0.00	0.00	0.00
12,400.00	90.00	270.68	7,135.00	-823.97	-4,772.37	4,823.82	0.00	0.00	0.00
12,500.00	90.00	270.68	7,135.00	-822.78	-4,872.36	4,923.37	0.00	0.00	0.00
12,600.00	90.00	270.68	7,135.00	-821.59	-4,972.36	5,022.93	0.00	0.00	0.00
12,700.00	90.00	270.68	7,135.00	-820.40	-5,072.35	5,122.49	0.00	0.00	0.00
12,800.00	90.00	270.68	7,135.00	-819.21	-5,172.34	5,222.05	0.00	0.00	0.00
12,900.00	90.00	270.68	7,135.00	-818.02	-5,272.34	5,321.61	0.00	0.00	0.00
13,000.00	90.00	270.68	7,135.00	-816.83	-5,372.33	5,421.17	0.00	0.00	0.00
13,100.00	90.00	270.68	7,135.00	-815.65	-5,472.32	5,520.73	0.00	0.00	0.00
13,200.00	90.00	270.68	7,135.00	-814.46	-5,572.31	5,620.29	0.00	0.00	0.00
13,300.00	90.00	270.68	7,135.00	-813.27	-5,672.31	5,719.85	0.00	0.00	0.00
13,400.00	90.00	270.68	7,135.00	-812.08	-5,772.30	5,819.41	0.00	0.00	0.00
13,500.00	90.00	270.68	7,135.00	-810.89	-5,872.29	5,918.97	0.00	0.00	0.00
13,600.00	90.00	270.68	7,135.00	-809.70	-5,972.29	6,018.53	0.00	0.00	0.00
13,700.00	90.00	270.68	7,135.00	-808.51	-6,072.28	6,118.09	0.00	0.00	0.00
13,800.00	90.00	270.68	7,135.00	-807.32	-6,172.27	6,217.65	0.00	0.00	0.00
13,900.00	90.00	270.68	7,135.00	-806.13	-6,272.26	6,317.21	0.00	0.00	0.00
14,000.00	90.00	270.68	7,135.00	-804.94	-6,372.26	6,416.77	0.00	0.00	0.00
14,100.00	90.00	270.68	7,135.00	-803.75	-6,472.25	6,516.33	0.00	0.00	0.00
14,200.00	90.00	270.68	7,135.00	-802.56	-6,572.24	6,615.89	0.00	0.00	0.00
14,300.00	90.00	270.68	7,135.00	-801.37	-6,672.24	6,715.45	0.00	0.00	0.00
14,400.00	90.00	270.68	7,135.00	-800.18	-6,772.23	6,815.01	0.00	0.00	0.00
14,500.00	90.00	270.68	7,135.00	-798.99	-6,872.22	6,914.57	0.00	0.00	0.00
14,600.00	90.00	270.68	7,135.00	-797.80	-6,972.22	7,014.13	0.00	0.00	0.00
14,700.00	90.00	270.68	7,135.00	-796.61	-7,072.21	7,113.69	0.00	0.00	0.00
14,800.00	90.00	270.68	7,135.00	-795.42	-7,172.20	7,213.25	0.00	0.00	0.00
14,900.00	90.00	270.68	7,135.00	-794.23	-7,272.19	7,312.81	0.00	0.00	0.00
15,000.00	90.00	270.68	7,135.00	-793.04	-7,372.19	7,412.37	0.00	0.00	0.00
15,100.00	90.00	270.68	7,135.00	-791.85	-7,472.18	7,511.93	0.00	0.00	0.00
15,200.00	90.00	270.68	7,135.00	-790.66	-7,572.17	7,611.49	0.00	0.00	0.00
15,300.00	90.00	270.68	7,135.00	-789.47	-7,672.17	7,711.05	0.00	0.00	0.00

<b>Database:</b>	DB_Jul2216dt_v14	<b>Local Co-ordinate Reference:</b>	Well Dotsero 6-14-02L
<b>Company:</b>	Confluence Resources	<b>TVD Reference:</b>	RKB=4995+24 @ 5019.00ft
<b>Project:</b>	Weld County, Colorado	<b>MD Reference:</b>	RKB=4995+24 @ 5019.00ft
<b>Site:</b>	Section 06-T07N-R64W	<b>North Reference:</b>	True
<b>Well:</b>	Dotsero 6-14-02L	<b>Survey Calculation Method:</b>	Minimum Curvature
<b>Wellbore:</b>	Original Hole		
<b>Design:</b>	plan1		

Planned Survey									
Measured Depth (ft)	Inclination (°)	Azimuth (°)	Vertical Depth (ft)	+N/-S (ft)	+E/-W (ft)	Vertical Section (ft)	Dogleg Rate (°/100ft)	Build Rate (°/100ft)	Turn Rate (°/100ft)
15,400.00	90.00	270.68	7,135.00	-788.28	-7,772.16	7,810.61	0.00	0.00	0.00
15,500.00	90.00	270.68	7,135.00	-787.09	-7,872.15	7,910.17	0.00	0.00	0.00
15,600.00	90.00	270.68	7,135.00	-785.90	-7,972.14	8,009.73	0.00	0.00	0.00
15,700.00	90.00	270.68	7,135.00	-784.71	-8,072.14	8,109.29	0.00	0.00	0.00
15,800.00	90.00	270.68	7,135.00	-783.52	-8,172.13	8,208.85	0.00	0.00	0.00
15,900.00	90.00	270.68	7,135.00	-782.33	-8,272.12	8,308.40	0.00	0.00	0.00
16,000.00	90.00	270.68	7,135.00	-781.14	-8,372.12	8,407.96	0.00	0.00	0.00
16,100.00	90.00	270.68	7,135.00	-779.95	-8,472.11	8,507.52	0.00	0.00	0.00
16,200.00	90.00	270.68	7,135.00	-778.76	-8,572.10	8,607.08	0.00	0.00	0.00
16,300.00	90.00	270.68	7,135.00	-777.57	-8,672.09	8,706.64	0.00	0.00	0.00
16,400.00	90.00	270.68	7,135.00	-776.38	-8,772.09	8,806.20	0.00	0.00	0.00
16,500.00	90.00	270.68	7,135.00	-775.19	-8,872.08	8,905.76	0.00	0.00	0.00
16,600.00	90.00	270.68	7,135.00	-774.00	-8,972.07	9,005.32	0.00	0.00	0.00
16,700.00	90.00	270.68	7,135.00	-772.81	-9,072.07	9,104.88	0.00	0.00	0.00
16,800.00	90.00	270.68	7,135.00	-771.62	-9,172.06	9,204.44	0.00	0.00	0.00
16,900.00	90.00	270.68	7,135.00	-770.43	-9,272.05	9,304.00	0.00	0.00	0.00
16,991.76	90.00	270.68	7,135.00	-769.34	-9,363.80	9,395.36	0.00	0.00	0.00
PBHL/TD 16991.76 MD/7135.00 TVD									

Design Targets									
Target Name - hit/miss target - Shape	Dip Angle (°)	Dip Dir. (°)	TVD (ft)	+N/-S (ft)	+E/-W (ft)	Northing (usft)	Easting (usft)	Latitude	Longitude
Dotsero 6-14-02L PBHL - plan hits target center - Point	0.00	0.00	7,135.00	-769.34	-9,363.80	14,744,090.13	1,746,383.00	40.59624181	-104.61827732
Dotsero 6-14-02L LP 471 - plan hits target center - Point	0.00	0.00	7,135.00	-880.91	13.23	14,744,022.81	1,755,760.44	40.59594039	-104.58449891

Plan Annotations				
Measured Depth (ft)	Vertical Depth (ft)	Local Coordinates		Comment
		+N/-S (ft)	+E/-W (ft)	
3,000.00	3,000.00	0.00	0.00	KOP Begin 2°/100' build
3,850.38	3,837.95	-98.25	77.74	Begin 17.01° tangent
6,607.91	6,474.88	-730.78	578.21	Begin 10°/100' build/turn
7,614.06	7,135.00	-880.91	13.23	Begin 90.00° lateral
16,991.76	7,135.00	-769.34	-9,363.80	PBHL/TD 16991.76 MD/7135.00 TVD

<b>Database:</b>	DB_Jul2216dt_v14	<b>Local Co-ordinate Reference:</b>	Well Dotsero 6-14-02L
<b>Company:</b>	Confluence Resources	<b>TVD Reference:</b>	RKB=4995+24 @ 5019.00ft
<b>Project:</b>	Weld County, Colorado	<b>MD Reference:</b>	RKB=4995+24 @ 5019.00ft
<b>Site:</b>	Section 06-T07N-R64W	<b>North Reference:</b>	True
<b>Well:</b>	Dotsero 6-14-02L	<b>Survey Calculation Method:</b>	Minimum Curvature
<b>Wellbore:</b>	Original Hole		
<b>Design:</b>	plan1		

<b>Project</b>	Weld County, Colorado		
<b>Map System:</b>	Universal Transverse Mercator (US Survey Feet)	<b>System Datum:</b>	Mean Sea Level
<b>Geo Datum:</b>	NAD83 Colorado - HARN		
<b>Map Zone:</b>	Zone 13N (108 W to 102 W)		

Site		Section 06-T07N-R64W			
Site Position:		Northing:	14,746,184.54 usft	Latitude:	40.60187654
From:	Map	Easting:	1,755,730.03 usft	Longitude:	-104.58457171
Position Uncertainty:	0.00 ft	Slot Radius:	13-3/16 "	Grid Convergence:	0.27 °

Well	Dotsero 6-14-02L, Surf loc: 1351 FSL 475 FEL Section 06-T07N-R64W					
Well Position	+N/-S	0.00 ft	Northing:	14,744,903.65 usft	Latitude:	40.59835926
	+E/-W	0.00 ft	Easting:	1,755,743.05 usft	Longitude:	-104.58454658
Position Uncertainty		0.00 ft	Wellhead Elevation:		Ground Level:	4,995.00 ft

<b>Wellbore</b>	Original Hole				
<b>Magnetics</b>	<b>Model Name</b>	<b>Sample Date</b>	<b>Declination (°)</b>	<b>Dip Angle (°)</b>	<b>Field Strength (nT)</b>
	HDGM	2/19/2018	7.98	66.98	52,358.50000000

<b>Design</b>	plan1			
<b>Audit Notes:</b>				
<b>Version:</b>	<b>Phase:</b>	PLAN	<b>Tie On Depth:</b>	0.00
<b>Vertical Section:</b>	<b>Depth From (TVD) (ft)</b>	<b>+N/-S (ft)</b>	<b>+E/-W (ft)</b>	<b>Direction (°)</b>
	0.00	0.00	0.00	265.30

<b>Plan Survey Tool Program</b>	<b>Date</b>	2/19/2018		
<b>Depth From (ft)</b>	<b>Depth To (ft)</b>	<b>Survey (Wellbore)</b>	<b>Tool Name</b>	<b>Remarks</b>
1	0.00	16,991.76 plan1 (Original Hole)		

<b>Plan Sections</b>										
<b>Measured Depth (ft)</b>	<b>Inclination (°)</b>	<b>Azimuth (°)</b>	<b>Vertical Depth (ft)</b>	<b>+N/-S (ft)</b>	<b>+E/-W (ft)</b>	<b>Dogleg Rate (°/100ft)</b>	<b>Build Rate (°/100ft)</b>	<b>Turn Rate (°/100ft)</b>	<b>TFO (°)</b>	<b>Target</b>
0.00	0.00	0.00	0.00	0.00	0.00	0.00	0.00	0.00	0.00	
3,000.00	0.00	0.00	3,000.00	0.00	0.00	0.00	0.00	0.00	0.00	
3,850.38	17.01	141.65	3,837.95	-98.25	77.74	2.00	2.00	0.00	141.65	
6,607.91	17.01	141.65	6,474.88	-730.78	578.21	0.00	0.00	0.00	0.00	
7,614.06	90.00	270.68	7,135.00	-880.91	13.23	10.00	7.25	12.82	127.79	Dotsero 6-14-02L LP
16,991.76	90.00	270.68	7,135.00	-769.34	-9,363.80	0.00	0.00	0.00	0.00	Dotsero 6-14-02L PBI



<b>Database:</b>	DB_Jul2216dt_v14	<b>Local Co-ordinate Reference:</b>	Well Dotsero 6-14-02L
<b>Company:</b>	Confluence Resources	<b>TVD Reference:</b>	RKB=4995+24 @ 5019.00ft
<b>Project:</b>	Weld County, Colorado	<b>MD Reference:</b>	RKB=4995+24 @ 5019.00ft
<b>Site:</b>	Section 06-T07N-R64W	<b>North Reference:</b>	True
<b>Well:</b>	Dotsero 6-14-02L	<b>Survey Calculation Method:</b>	Minimum Curvature
<b>Wellbore:</b>	Original Hole		
<b>Design:</b>	plan1		

Planned Survey									
Measured Depth (ft)	Inclination (°)	Azimuth (°)	Vertical Depth (ft)	+N/-S (ft)	+E/-W (ft)	Map Northing (usft)	Map Easting (usft)	Latitude	Longitude
0.00	0.00	0.00	0.00	0.00	0.00	14,744,903.65	1,755,743.05	40.59835926	-104.58454658
100.00	0.00	0.00	100.00	0.00	0.00	14,744,903.65	1,755,743.05	40.59835926	-104.58454658
200.00	0.00	0.00	200.00	0.00	0.00	14,744,903.65	1,755,743.05	40.59835926	-104.58454658
300.00	0.00	0.00	300.00	0.00	0.00	14,744,903.65	1,755,743.05	40.59835926	-104.58454658
400.00	0.00	0.00	400.00	0.00	0.00	14,744,903.65	1,755,743.05	40.59835926	-104.58454658
500.00	0.00	0.00	500.00	0.00	0.00	14,744,903.65	1,755,743.05	40.59835926	-104.58454658
600.00	0.00	0.00	600.00	0.00	0.00	14,744,903.65	1,755,743.05	40.59835926	-104.58454658
700.00	0.00	0.00	700.00	0.00	0.00	14,744,903.65	1,755,743.05	40.59835926	-104.58454658
800.00	0.00	0.00	800.00	0.00	0.00	14,744,903.65	1,755,743.05	40.59835926	-104.58454658
900.00	0.00	0.00	900.00	0.00	0.00	14,744,903.65	1,755,743.05	40.59835926	-104.58454658
1,000.00	0.00	0.00	1,000.00	0.00	0.00	14,744,903.65	1,755,743.05	40.59835926	-104.58454658
1,100.00	0.00	0.00	1,100.00	0.00	0.00	14,744,903.65	1,755,743.05	40.59835926	-104.58454658
1,200.00	0.00	0.00	1,200.00	0.00	0.00	14,744,903.65	1,755,743.05	40.59835926	-104.58454658
1,300.00	0.00	0.00	1,300.00	0.00	0.00	14,744,903.65	1,755,743.05	40.59835926	-104.58454658
1,400.00	0.00	0.00	1,400.00	0.00	0.00	14,744,903.65	1,755,743.05	40.59835926	-104.58454658
1,500.00	0.00	0.00	1,500.00	0.00	0.00	14,744,903.65	1,755,743.05	40.59835926	-104.58454658
1,600.00	0.00	0.00	1,600.00	0.00	0.00	14,744,903.65	1,755,743.05	40.59835926	-104.58454658
1,700.00	0.00	0.00	1,700.00	0.00	0.00	14,744,903.65	1,755,743.05	40.59835926	-104.58454658
1,800.00	0.00	0.00	1,800.00	0.00	0.00	14,744,903.65	1,755,743.05	40.59835926	-104.58454658
1,900.00	0.00	0.00	1,900.00	0.00	0.00	14,744,903.65	1,755,743.05	40.59835926	-104.58454658
2,000.00	0.00	0.00	2,000.00	0.00	0.00	14,744,903.65	1,755,743.05	40.59835926	-104.58454658
2,100.00	0.00	0.00	2,100.00	0.00	0.00	14,744,903.65	1,755,743.05	40.59835926	-104.58454658
2,200.00	0.00	0.00	2,200.00	0.00	0.00	14,744,903.65	1,755,743.05	40.59835926	-104.58454658
2,300.00	0.00	0.00	2,300.00	0.00	0.00	14,744,903.65	1,755,743.05	40.59835926	-104.58454658
2,400.00	0.00	0.00	2,400.00	0.00	0.00	14,744,903.65	1,755,743.05	40.59835926	-104.58454658
2,500.00	0.00	0.00	2,500.00	0.00	0.00	14,744,903.65	1,755,743.05	40.59835926	-104.58454658
2,600.00	0.00	0.00	2,600.00	0.00	0.00	14,744,903.65	1,755,743.05	40.59835926	-104.58454658
2,700.00	0.00	0.00	2,700.00	0.00	0.00	14,744,903.65	1,755,743.05	40.59835926	-104.58454658
2,800.00	0.00	0.00	2,800.00	0.00	0.00	14,744,903.65	1,755,743.05	40.59835926	-104.58454658
2,900.00	0.00	0.00	2,900.00	0.00	0.00	14,744,903.65	1,755,743.05	40.59835926	-104.58454658
3,000.00	0.00	0.00	3,000.00	0.00	0.00	14,744,903.65	1,755,743.05	40.59835926	-104.58454658
<b>KOP Begin 2°/100' build</b>									
3,100.00	2.00	141.65	3,099.98	-1.37	1.08	14,744,902.29	1,755,744.14	40.59835550	-104.58454268
3,200.00	4.00	141.65	3,199.84	-5.47	4.33	14,744,898.20	1,755,747.41	40.59834423	-104.58453098
3,300.00	6.00	141.65	3,299.45	-12.31	9.74	14,744,891.39	1,755,752.84	40.59832546	-104.58451150
3,400.00	8.00	141.65	3,398.70	-21.86	17.30	14,744,881.87	1,755,760.45	40.59829922	-104.58448426
3,500.00	10.00	141.65	3,497.47	-34.13	27.01	14,744,869.65	1,755,770.22	40.59826554	-104.58444929
3,600.00	12.00	141.65	3,595.62	-49.09	38.84	14,744,854.74	1,755,782.12	40.59822445	-104.58440665
3,700.00	14.00	141.65	3,693.06	-66.73	52.80	14,744,837.17	1,755,796.16	40.59817601	-104.58435637
3,800.00	16.00	141.65	3,789.64	-87.03	68.86	14,744,816.95	1,755,812.32	40.59812028	-104.58429852
3,850.38	17.01	141.65	3,837.95	-98.25	77.74	14,744,805.76	1,755,821.25	40.59808946	-104.58426653
<b>Begin 17.01° tangent</b>									
3,900.00	17.01	141.65	3,885.40	-109.64	86.75	14,744,794.43	1,755,830.31	40.59805821	-104.58423409
4,000.00	17.01	141.65	3,981.02	-132.57	104.90	14,744,771.57	1,755,848.57	40.59799523	-104.58416871
4,100.00	17.01	141.65	4,076.65	-155.51	123.04	14,744,748.72	1,755,866.83	40.59793224	-104.58410333
4,200.00	17.01	141.65	4,172.28	-178.45	141.19	14,744,725.87	1,755,885.08	40.59786926	-104.58403795
4,300.00	17.01	141.65	4,267.90	-201.39	159.34	14,744,703.02	1,755,903.34	40.59780627	-104.58397257
4,400.00	17.01	141.65	4,363.53	-224.33	177.49	14,744,680.16	1,755,921.60	40.59774328	-104.58390719
4,500.00	17.01	141.65	4,459.16	-247.26	195.64	14,744,657.31	1,755,939.86	40.59768030	-104.58384181
4,600.00	17.01	141.65	4,554.78	-270.20	213.79	14,744,634.46	1,755,958.11	40.59761731	-104.58377643
4,700.00	17.01	141.65	4,650.41	-293.14	231.94	14,744,611.61	1,755,976.37	40.59755433	-104.58371105
4,800.00	17.01	141.65	4,746.04	-316.08	250.09	14,744,588.75	1,755,994.63	40.59749134	-104.58364568
4,900.00	17.01	141.65	4,841.66	-339.02	268.24	14,744,565.90	1,756,012.88	40.59742836	-104.58358030
5,000.00	17.01	141.65	4,937.29	-361.96	286.39	14,744,543.05	1,756,031.14	40.59736537	-104.58351492



<b>Database:</b>	DB_Jul2216dt_v14	<b>Local Co-ordinate Reference:</b>	Well Dotsero 6-14-02L
<b>Company:</b>	Confluence Resources	<b>TVD Reference:</b>	RKB=4995+24 @ 5019.00ft
<b>Project:</b>	Weld County, Colorado	<b>MD Reference:</b>	RKB=4995+24 @ 5019.00ft
<b>Site:</b>	Section 06-T07N-R64W	<b>North Reference:</b>	True
<b>Well:</b>	Dotsero 6-14-02L	<b>Survey Calculation Method:</b>	Minimum Curvature
<b>Wellbore:</b>	Original Hole		
<b>Design:</b>	plan1		

Planned Survey									
Measured Depth (ft)	Inclination (°)	Azimuth (°)	Vertical Depth (ft)	+N/-S (ft)	+E/-W (ft)	Map Northing (usft)	Map Easting (usft)	Latitude	Longitude
5,100.00	17.01	141.65	5,032.92	-384.89	304.54	14,744,520.20	1,756,049.40	40.59730239	-104.58344954
5,200.00	17.01	141.65	5,128.54	-407.83	322.69	14,744,497.35	1,756,067.66	40.59723940	-104.58338416
5,300.00	17.01	141.65	5,224.17	-430.77	340.84	14,744,474.49	1,756,085.91	40.59717641	-104.58331878
5,400.00	17.01	141.65	5,319.80	-453.71	358.99	14,744,451.64	1,756,104.17	40.59711343	-104.58325341
5,500.00	17.01	141.65	5,415.42	-476.65	377.13	14,744,428.79	1,756,122.43	40.59705044	-104.58318803
5,600.00	17.01	141.65	5,511.05	-499.59	395.28	14,744,405.94	1,756,140.69	40.59698746	-104.58312265
5,700.00	17.01	141.65	5,606.67	-522.52	413.43	14,744,383.08	1,756,158.94	40.59692447	-104.58305727
5,800.00	17.01	141.65	5,702.30	-545.46	431.58	14,744,360.23	1,756,177.20	40.59686148	-104.58299190
5,900.00	17.01	141.65	5,797.93	-568.40	449.73	14,744,337.38	1,756,195.46	40.59679850	-104.58292652
6,000.00	17.01	141.65	5,893.55	-591.34	467.88	14,744,314.53	1,756,213.71	40.59673551	-104.58286114
6,100.00	17.01	141.65	5,989.18	-614.28	486.03	14,744,291.68	1,756,231.97	40.59667253	-104.58279577
6,200.00	17.01	141.65	6,084.81	-637.21	504.18	14,744,268.82	1,756,250.23	40.59660954	-104.58273039
6,300.00	17.01	141.65	6,180.43	-660.15	522.33	14,744,245.97	1,756,268.49	40.59654655	-104.58266501
6,400.00	17.01	141.65	6,276.06	-683.09	540.48	14,744,223.12	1,756,286.74	40.59648357	-104.58259963
6,500.00	17.01	141.65	6,371.69	-706.03	558.63	14,744,200.27	1,756,305.00	40.59642058	-104.58253426
6,600.00	17.01	141.65	6,467.31	-728.97	576.78	14,744,177.41	1,756,323.26	40.59635759	-104.58246888
6,607.91	17.01	141.65	6,474.88	-730.78	578.21	14,744,175.61	1,756,324.70	40.59635261	-104.58246371
Begin 10°/100' build/turn									
6,700.00	13.44	174.62	6,563.89	-752.04	587.59	14,744,154.39	1,756,334.18	40.59629423	-104.58242992
6,800.00	15.85	213.86	6,660.86	-775.01	581.06	14,744,131.39	1,756,327.76	40.59623117	-104.58245347
6,900.00	22.76	236.19	6,755.31	-797.17	557.32	14,744,109.12	1,756,304.12	40.59617033	-104.58253898
7,000.00	31.32	247.70	6,844.35	-817.85	517.09	14,744,088.25	1,756,264.00	40.59611355	-104.58268388
7,100.00	40.50	254.53	6,925.29	-836.42	461.61	14,744,069.42	1,756,208.60	40.59606255	-104.58288376
7,200.00	49.95	259.16	6,995.67	-852.32	392.55	14,744,053.19	1,756,139.61	40.59601890	-104.58313253
7,300.00	59.54	262.65	7,053.33	-865.06	312.01	14,744,040.07	1,756,059.14	40.59598390	-104.58342265
7,400.00	69.20	265.50	7,096.55	-874.27	222.44	14,744,030.44	1,755,969.61	40.59595864	-104.58374530
7,500.00	78.91	268.01	7,123.99	-879.65	126.56	14,744,024.61	1,755,873.76	40.59594387	-104.58409067
7,600.00	88.63	270.36	7,134.83	-881.04	27.29	14,744,022.75	1,755,774.50	40.59594004	-104.58444828
7,614.06	90.00	270.68	7,135.00	-880.91	13.23	14,744,022.81	1,755,760.44	40.59594039	-104.58449891
Begin 90.00° lateral									
7,700.00	90.00	270.68	7,135.00	-879.89	-72.70	14,744,023.43	1,755,674.50	40.59594319	-104.58480847
7,800.00	90.00	270.68	7,135.00	-878.70	-172.70	14,744,024.14	1,755,574.50	40.59594646	-104.58516867
7,900.00	90.00	270.68	7,135.00	-877.51	-272.69	14,744,024.86	1,755,474.50	40.59594972	-104.58552886
8,000.00	90.00	270.68	7,135.00	-876.32	-372.68	14,744,025.58	1,755,374.51	40.59595299	-104.58588906
8,100.00	90.00	270.68	7,135.00	-875.13	-472.67	14,744,026.30	1,755,274.51	40.59595625	-104.58624926
8,200.00	90.00	270.68	7,135.00	-873.94	-572.67	14,744,027.02	1,755,174.51	40.59595951	-104.58660946
8,300.00	90.00	270.68	7,135.00	-872.75	-672.66	14,744,027.73	1,755,074.52	40.59596277	-104.58696965
8,400.00	90.00	270.68	7,135.00	-871.56	-772.65	14,744,028.45	1,754,974.52	40.59596603	-104.58732985
8,500.00	90.00	270.68	7,135.00	-870.37	-872.65	14,744,029.17	1,754,874.52	40.59596929	-104.58769005
8,600.00	90.00	270.68	7,135.00	-869.18	-972.64	14,744,029.89	1,754,774.52	40.59597254	-104.58805025
8,700.00	90.00	270.68	7,135.00	-867.99	-1,072.63	14,744,030.61	1,754,674.53	40.59597580	-104.58841045
8,800.00	90.00	270.68	7,135.00	-866.80	-1,172.63	14,744,031.32	1,754,574.53	40.59597905	-104.58877064
8,900.00	90.00	270.68	7,135.00	-865.61	-1,272.62	14,744,032.04	1,754,474.53	40.59598230	-104.58913084
9,000.00	90.00	270.68	7,135.00	-864.42	-1,372.61	14,744,032.76	1,754,374.54	40.59598556	-104.58949104
9,100.00	90.00	270.68	7,135.00	-863.24	-1,472.60	14,744,033.48	1,754,274.54	40.59598881	-104.58985124
9,200.00	90.00	270.68	7,135.00	-862.05	-1,572.60	14,744,034.19	1,754,174.54	40.59599206	-104.59021143
9,300.00	90.00	270.68	7,135.00	-860.86	-1,672.59	14,744,034.91	1,754,074.54	40.59599531	-104.59057163
9,400.00	90.00	270.68	7,135.00	-859.67	-1,772.58	14,744,035.63	1,753,974.55	40.59599855	-104.59093183
9,500.00	90.00	270.68	7,135.00	-858.48	-1,872.58	14,744,036.35	1,753,874.55	40.59600180	-104.59129203
9,600.00	90.00	270.68	7,135.00	-857.29	-1,972.57	14,744,037.07	1,753,774.55	40.59600504	-104.59165223
9,700.00	90.00	270.68	7,135.00	-856.10	-2,072.56	14,744,037.78	1,753,674.55	40.59600829	-104.59201242
9,800.00	90.00	270.68	7,135.00	-854.91	-2,172.55	14,744,038.50	1,753,574.56	40.59601153	-104.59237262
9,900.00	90.00	270.68	7,135.00	-853.72	-2,272.55	14,744,039.22	1,753,474.56	40.59601477	-104.59273282
10,000.00	90.00	270.68	7,135.00	-852.53	-2,372.54	14,744,039.94	1,753,374.56	40.59601801	-104.59309302

<b>Database:</b>	DB_Jul2216dt_v14	<b>Local Co-ordinate Reference:</b>	Well Dotsero 6-14-02L
<b>Company:</b>	Confluence Resources	<b>TVD Reference:</b>	RKB=4995+24 @ 5019.00ft
<b>Project:</b>	Weld County, Colorado	<b>MD Reference:</b>	RKB=4995+24 @ 5019.00ft
<b>Site:</b>	Section 06-T07N-R64W	<b>North Reference:</b>	True
<b>Well:</b>	Dotsero 6-14-02L	<b>Survey Calculation Method:</b>	Minimum Curvature
<b>Wellbore:</b>	Original Hole		
<b>Design:</b>	plan1		

Planned Survey									
Measured Depth (ft)	Inclination (°)	Azimuth (°)	Vertical Depth (ft)	+N/-S (ft)	+E/-W (ft)	Map Northing (usft)	Map Easting (usft)	Latitude	Longitude
10,100.00	90.00	270.68	7,135.00	-851.34	-2,472.53	14,744,040.66	1,753,274.57	40.59602125	-104.59345322
10,200.00	90.00	270.68	7,135.00	-850.15	-2,572.53	14,744,041.37	1,753,174.57	40.59602449	-104.59381342
10,300.00	90.00	270.68	7,135.00	-848.96	-2,672.52	14,744,042.09	1,753,074.57	40.59602773	-104.59417361
10,400.00	90.00	270.68	7,135.00	-847.77	-2,772.51	14,744,042.81	1,752,974.57	40.59603096	-104.59453381
10,500.00	90.00	270.68	7,135.00	-846.58	-2,872.51	14,744,043.53	1,752,874.58	40.59603420	-104.59489401
10,600.00	90.00	270.68	7,135.00	-845.39	-2,972.50	14,744,044.24	1,752,774.58	40.59603743	-104.59525421
10,700.00	90.00	270.68	7,135.00	-844.20	-3,072.49	14,744,044.96	1,752,674.58	40.59604067	-104.59561441
10,800.00	90.00	270.68	7,135.00	-843.01	-3,172.48	14,744,045.68	1,752,574.59	40.59604390	-104.59597461
10,900.00	90.00	270.68	7,135.00	-841.82	-3,272.48	14,744,046.40	1,752,474.59	40.59604713	-104.59633481
11,000.00	90.00	270.68	7,135.00	-840.63	-3,372.47	14,744,047.12	1,752,374.59	40.59605036	-104.59669500
11,100.00	90.00	270.68	7,135.00	-839.44	-3,472.46	14,744,047.83	1,752,274.59	40.59605359	-104.59705520
11,200.00	90.00	270.68	7,135.00	-838.25	-3,572.46	14,744,048.55	1,752,174.60	40.59605681	-104.59741540
11,300.00	90.00	270.68	7,135.00	-837.06	-3,672.45	14,744,049.27	1,752,074.60	40.59606004	-104.59777560
11,400.00	90.00	270.68	7,135.00	-835.87	-3,772.44	14,744,049.99	1,751,974.60	40.59606326	-104.59813580
11,500.00	90.00	270.68	7,135.00	-834.68	-3,872.43	14,744,050.71	1,751,874.60	40.59606649	-104.59849600
11,600.00	90.00	270.68	7,135.00	-833.49	-3,972.43	14,744,051.42	1,751,774.61	40.59606971	-104.59885620
11,700.00	90.00	270.68	7,135.00	-832.30	-4,072.42	14,744,052.14	1,751,674.61	40.59607293	-104.59921640
11,800.00	90.00	270.68	7,135.00	-831.11	-4,172.41	14,744,052.86	1,751,574.61	40.59607615	-104.59957660
11,900.00	90.00	270.68	7,135.00	-829.92	-4,272.41	14,744,053.58	1,751,474.62	40.59607937	-104.59993679
12,000.00	90.00	270.68	7,135.00	-828.73	-4,372.40	14,744,054.30	1,751,374.62	40.59608259	-104.60029699
12,100.00	90.00	270.68	7,135.00	-827.54	-4,472.39	14,744,055.01	1,751,274.62	40.59608581	-104.60065719
12,200.00	90.00	270.68	7,135.00	-826.35	-4,572.38	14,744,055.73	1,751,174.62	40.59608902	-104.60101739
12,300.00	90.00	270.68	7,135.00	-825.16	-4,672.38	14,744,056.45	1,751,074.63	40.59609224	-104.60137759
12,400.00	90.00	270.68	7,135.00	-823.97	-4,772.37	14,744,057.17	1,750,974.63	40.59609545	-104.60173779
12,500.00	90.00	270.68	7,135.00	-822.78	-4,872.36	14,744,057.88	1,750,874.63	40.59609867	-104.60209799
12,600.00	90.00	270.68	7,135.00	-821.59	-4,972.36	14,744,058.60	1,750,774.64	40.59610188	-104.60245819
12,700.00	90.00	270.68	7,135.00	-820.40	-5,072.35	14,744,059.32	1,750,674.64	40.59610509	-104.60281839
12,800.00	90.00	270.68	7,135.00	-819.21	-5,172.34	14,744,060.04	1,750,574.64	40.59610830	-104.60317859
12,900.00	90.00	270.68	7,135.00	-818.02	-5,272.34	14,744,060.76	1,750,474.64	40.59611150	-104.60353879
13,000.00	90.00	270.68	7,135.00	-816.83	-5,372.33	14,744,061.47	1,750,374.65	40.59611471	-104.60389899
13,100.00	90.00	270.68	7,135.00	-815.65	-5,472.32	14,744,062.19	1,750,274.65	40.59611792	-104.60425919
13,200.00	90.00	270.68	7,135.00	-814.46	-5,572.31	14,744,062.91	1,750,174.65	40.59612112	-104.60461939
13,300.00	90.00	270.68	7,135.00	-813.27	-5,672.31	14,744,063.63	1,750,074.65	40.59612433	-104.60497959
13,400.00	90.00	270.68	7,135.00	-812.08	-5,772.30	14,744,064.35	1,749,974.66	40.59612753	-104.60533979
13,500.00	90.00	270.68	7,135.00	-810.89	-5,872.29	14,744,065.06	1,749,874.66	40.59613073	-104.60569999
13,600.00	90.00	270.68	7,135.00	-809.70	-5,972.29	14,744,065.78	1,749,774.66	40.59613393	-104.60606019
13,700.00	90.00	270.68	7,135.00	-808.51	-6,072.28	14,744,066.50	1,749,674.67	40.59613713	-104.60642039
13,800.00	90.00	270.68	7,135.00	-807.32	-6,172.27	14,744,067.22	1,749,574.67	40.59614033	-104.60678059
13,900.00	90.00	270.68	7,135.00	-806.13	-6,272.26	14,744,067.93	1,749,474.67	40.59614352	-104.60714079
14,000.00	90.00	270.68	7,135.00	-804.94	-6,372.26	14,744,068.65	1,749,374.67	40.59614672	-104.60750099
14,100.00	90.00	270.68	7,135.00	-803.75	-6,472.25	14,744,069.37	1,749,274.68	40.59614991	-104.60786119
14,200.00	90.00	270.68	7,135.00	-802.56	-6,572.24	14,744,070.09	1,749,174.68	40.59615311	-104.60822139
14,300.00	90.00	270.68	7,135.00	-801.37	-6,672.24	14,744,070.81	1,749,074.68	40.59615630	-104.60858159
14,400.00	90.00	270.68	7,135.00	-800.18	-6,772.23	14,744,071.52	1,748,974.69	40.59615949	-104.60894179
14,500.00	90.00	270.68	7,135.00	-798.99	-6,872.22	14,744,072.24	1,748,874.69	40.59616268	-104.60930199
14,600.00	90.00	270.68	7,135.00	-797.80	-6,972.22	14,744,072.96	1,748,774.69	40.59616587	-104.60966219
14,700.00	90.00	270.68	7,135.00	-796.61	-7,072.21	14,744,073.68	1,748,674.69	40.59616906	-104.61002239
14,800.00	90.00	270.68	7,135.00	-795.42	-7,172.20	14,744,074.40	1,748,574.70	40.59617224	-104.61038259
14,900.00	90.00	270.68	7,135.00	-794.23	-7,272.19	14,744,075.11	1,748,474.70	40.59617543	-104.61074279
15,000.00	90.00	270.68	7,135.00	-793.04	-7,372.19	14,744,075.83	1,748,374.70	40.59617861	-104.61110299
15,100.00	90.00	270.68	7,135.00	-791.85	-7,472.18	14,744,076.55	1,748,274.70	40.59618180	-104.61146319
15,200.00	90.00	270.68	7,135.00	-790.66	-7,572.17	14,744,077.27	1,748,174.71	40.59618498	-104.61182339
15,300.00	90.00	270.68	7,135.00	-789.47	-7,672.17	14,744,077.98	1,748,074.71	40.59618816	-104.61218359
15,400.00	90.00	270.68	7,135.00	-788.28	-7,772.16	14,744,078.70	1,747,974.71	40.59619134	-104.61254379
15,500.00	90.00	270.68	7,135.00	-787.09	-7,872.15	14,744,079.42	1,747,874.72	40.59619452	-104.61290399

<b>Database:</b>	DB_Jul2216dt_v14	<b>Local Co-ordinate Reference:</b>	Well Dotsero 6-14-02L
<b>Company:</b>	Confluence Resources	<b>TVD Reference:</b>	RKB=4995+24 @ 5019.00ft
<b>Project:</b>	Weld County, Colorado	<b>MD Reference:</b>	RKB=4995+24 @ 5019.00ft
<b>Site:</b>	Section 06-T07N-R64W	<b>North Reference:</b>	True
<b>Well:</b>	Dotsero 6-14-02L	<b>Survey Calculation Method:</b>	Minimum Curvature
<b>Wellbore:</b>	Original Hole		
<b>Design:</b>	plan1		

Planned Survey										
Measured Depth (ft)	Inclination (°)	Azimuth (°)	Vertical Depth (ft)	+N/-S (ft)	+E/-W (ft)	Map Northing (usft)	Map Easting (usft)	Latitude	Longitude	
15,600.00	90.00	270.68	7,135.00	-785.90	-7,972.14	14,744,080.14	1,747,774.72	40.59619770	-104.61326419	
15,700.00	90.00	270.68	7,135.00	-784.71	-8,072.14	14,744,080.86	1,747,674.72	40.59620087	-104.61362439	
15,800.00	90.00	270.68	7,135.00	-783.52	-8,172.13	14,744,081.57	1,747,574.72	40.59620405	-104.61398459	
15,900.00	90.00	270.68	7,135.00	-782.33	-8,272.12	14,744,082.29	1,747,474.73	40.59620722	-104.61434480	
16,000.00	90.00	270.68	7,135.00	-781.14	-8,372.12	14,744,083.01	1,747,374.73	40.59621040	-104.61470500	
16,100.00	90.00	270.68	7,135.00	-779.95	-8,472.11	14,744,083.73	1,747,274.73	40.59621357	-104.61506520	
16,200.00	90.00	270.68	7,135.00	-778.76	-8,572.10	14,744,084.45	1,747,174.73	40.59621674	-104.61542540	
16,300.00	90.00	270.68	7,135.00	-777.57	-8,672.09	14,744,085.16	1,747,074.74	40.59621991	-104.61578560	
16,400.00	90.00	270.68	7,135.00	-776.38	-8,772.09	14,744,085.88	1,746,974.74	40.59622308	-104.61614580	
16,500.00	90.00	270.68	7,135.00	-775.19	-8,872.08	14,744,086.60	1,746,874.74	40.59622625	-104.61650600	
16,600.00	90.00	270.68	7,135.00	-774.00	-8,972.07	14,744,087.32	1,746,774.75	40.59622941	-104.61686620	
16,700.00	90.00	270.68	7,135.00	-772.81	-9,072.07	14,744,088.04	1,746,674.75	40.59623258	-104.61722640	
16,800.00	90.00	270.68	7,135.00	-771.62	-9,172.06	14,744,088.75	1,746,574.75	40.59623574	-104.61758660	
16,900.00	90.00	270.68	7,135.00	-770.43	-9,272.05	14,744,089.47	1,746,474.75	40.59623891	-104.61794681	
16,991.76	90.00	270.68	7,135.00	-769.34	-9,363.80	14,744,090.13	1,746,383.00	40.59624181	-104.61827732	
PBHL/TD 16991.76 MD/7135.00 TVD										

Design Targets										
Target Name - hit/miss target - Shape	Dip Angle (°)	Dip Dir. (°)	TVD (ft)	+N/-S (ft)	+E/-W (ft)	Northing (usft)	Easting (usft)	Latitude	Longitude	
Dotsero 6-14-02L PBHL - plan hits target center - Point	0.00	0.00	7,135.00	-769.34	-9,363.80	14,744,090.13	1,746,383.00	40.59624181	-104.61827732	
Dotsero 6-14-02L LP 471 - plan hits target center - Point	0.00	0.00	7,135.00	-880.91	13.23	14,744,022.81	1,755,760.44	40.59594039	-104.58449891	

Plan Annotations					
Measured Depth (ft)	Vertical Depth (ft)	Local Coordinates			
		+N/-S (ft)	+E/-W (ft)	Comment	
3,000.00	3,000.00	0.00	0.00	KOP Begin 2°/100' build	
3,850.38	3,837.95	-98.25	77.74	Begin 17.01° tangent	
6,607.91	6,474.88	-730.78	578.21	Begin 10°/100' build/turn	
7,614.06	7,135.00	-880.91	13.23	Begin 90.00° lateral	
16,991.76	7,135.00	-769.34	-9,363.80	PBHL/TD 16991.76 MD/7135.00 TVD	