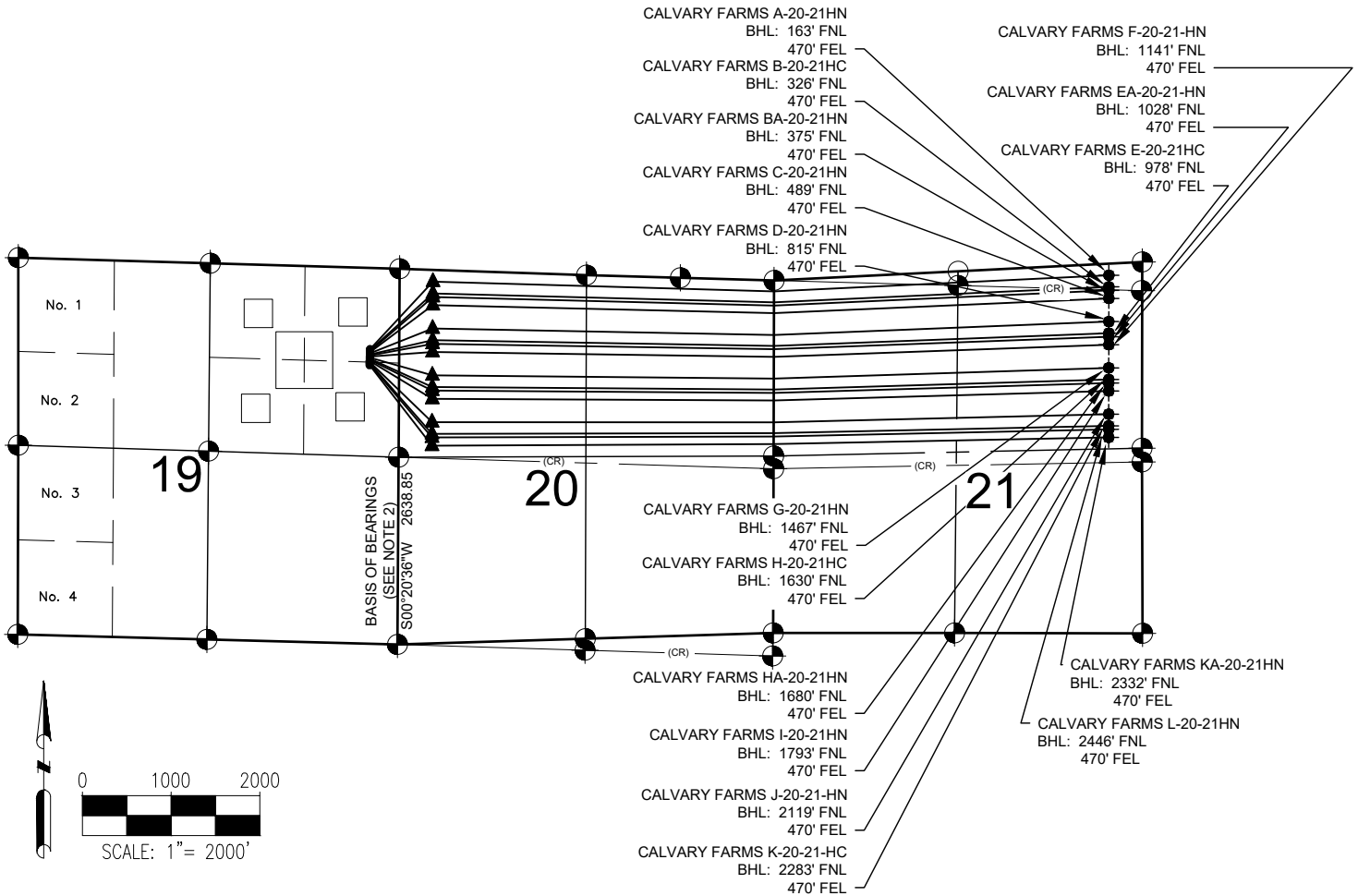


# CALVARY FARMS 19-D PAD MULTI-WELL PLAN



## NOTES:

- CALVARY FARMS A-20-21HN TO BE AT 1143' FNL & 411' FEL.  
BOTTOM HOLE AT 163' FNL & 470' FEL, SEC. 21.
- CALVARY FARMS B-20-21HC TO BE AT 1158' FNL & 411' FEL.  
BOTTOM HOLE AT 326' FNL & 470' FEL, SEC. 21.
- CALVARY FARMS BA-20-21HN TO BE AT 1173' FNL & 411' FEL.  
BOTTOM HOLE AT 375' FNL & 470' FEL, SEC. 21.
- CALVARY FARMS C-20-21HN TO BE AT 1188' FNL & 412' FEL.  
BOTTOM HOLE AT 489' FNL & 470' FEL, SEC. 21.

## NOTES:

- CALVARY FARMS D-20-21HN TO BE AT 1203' FNL & 412' FEL.  
BOTTOM HOLE AT 815' FNL & 470' FEL, SEC. 21.
- CALVARY FARMS E-20-21HC TO BE AT 1218' FNL & 412' FEL.  
BOTTOM HOLE AT 978' FNL & 470' FEL, SEC. 21.
- CALVARY FARMS EA-20-21HN TO BE AT 1233' FNL & 413' FEL.  
BOTTOM HOLE AT 1028' FNL & 470' FEL, SEC. 21.
- CALVARY FARMS F-20-21HN TO BE AT 1248' FNL & 413' FEL.  
BOTTOM HOLE AT 1141' FNL & 470' FEL, SEC. 21.
- CALVARY FARMS G-20-21HN TO BE AT 1263' FNL & 414' FEL.  
BOTTOM HOLE AT 1467' FNL & 470' FEL, SEC. 21.
- CALVARY FARMS H-20-21HC TO BE AT 1278' FNL & 414' FEL.  
BOTTOM HOLE AT 1630' FNL & 470' FEL, SEC. 21.
- CALVARY FARMS HA-20-21HN TO BE AT 1293' FNL & 414' FEL.  
BOTTOM HOLE AT 1680' FNL & 470' FEL, SEC. 21.
- CALVARY FARMS I-20-21HN TO BE AT 1308' FNL & 415' FEL.  
BOTTOM HOLE AT 1793' FNL & 470' FEL, SEC. 21.
- CALVARY FARMS J-20-21HN TO BE AT 1323' FNL & 415' FEL.  
BOTTOM HOLE AT 2119' FNL & 470' FEL, SEC. 21.
- CALVARY FARMS K-20-21HC TO BE AT 1338' FNL & 416' FEL.  
BOTTOM HOLE AT 2283' FNL & 470' FEL, SEC. 21.
- CALVARY FARMS KA-20-21HN TO BE AT 1353' FNL & 416' FEL.  
BOTTOM HOLE AT 2332' FNL & 470' FEL, SEC. 21.
- CALVARY FARMS L-20-21HN TO BE AT 1368' FNL & 416' FEL.  
BOTTOM HOLE AT 2446' FNL & 470' FEL, SEC. 21.

## LEGEND

- = EXISTING MONUMENT
- = CALCULATED POSITION
- = PROPOSED WELL
- ◆ = EXISTING WELL
- ▲ = LANDING POINT
- BHL = BOTTOM HOLE LOCATION
- CR = COMMON REPORT

## NOTES:

- THIS FIELD SURVEY CONFORMS TO THE MINIMUM STANDARDS SET BY THE C.O.G.C.C., RULE NO. 215
- BEARINGS ARE BASED ON THE ASSUMPTION THAT THE EAST LINE OF THE SOUTHEAST QUARTER OF SECTION 19, BEARS S00°20'36"W BETWEEN THE MONUMENTS SHOWN HEREON.
- ALL DISTANCES AND BEARINGS SHOWN HEREON ARE GROUND VALUES AS GPS MEASURED IN THE FIELD, WITH TIES TO WELLS MEASURED PERPENDICULAR TO SECTION LINES. THIS LOW DISTORTION PROJECTION (LDP) IS BASED ON THE NORTH AMERICAN DATUM OF 1983, U.S. SURVEY FOOT WITH A LATITUDE ORIGIN OF 40.568059°N, A CENTRAL MERIDIAN LONGITUDE OF 104.658844°W, AND A SCALE FACTOR ON THE CENTRAL MERIDIAN OF 1.00023 (EXACT). THE LDP BASIS OF BEARINGS IS GEODETIC NORTH.
- FIELD VERIFICATION OF MONUMENTS COMPLETED WITHIN 1 YEAR OF SIGNATURE DATE.