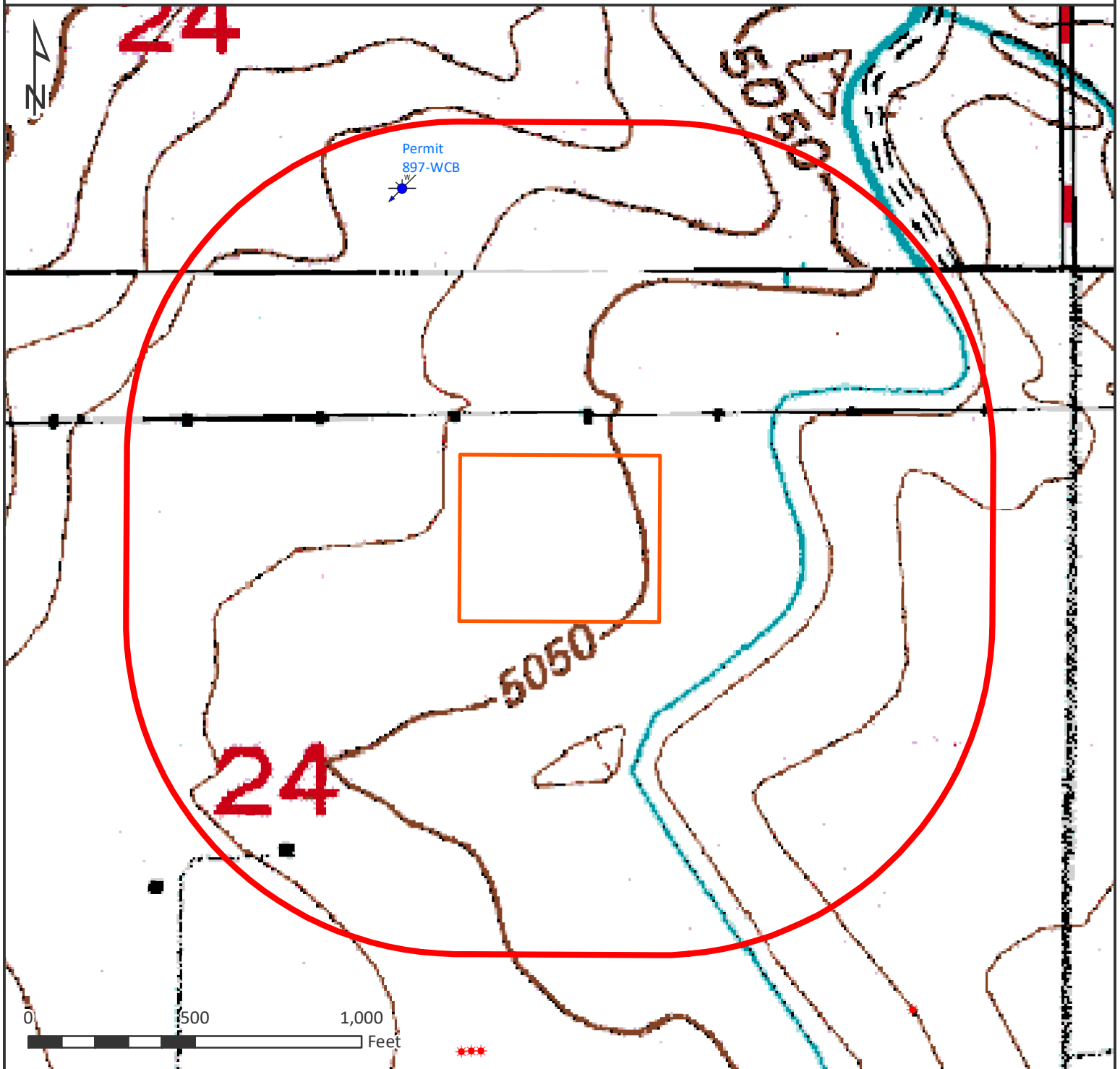


HYDROLOGY MAP Polo 24-6HZ







Nearest Surface Water Features

Speer Canal: 210' SE Elev: 5044'
Loc Elev: 5060'

All measurements are made from
edge of disturbed area.

Legend

-  WATER WELL
-  WELL PAD (PROPOSED)
-  1000' BUFFER
-  EXISTING OIL/GAS WELL (COGCC)



Date created: 1/25/2018
Created by: APC Regulatory GIS
Scale: 1:5,000
Projection: NAD83 UTM 13N