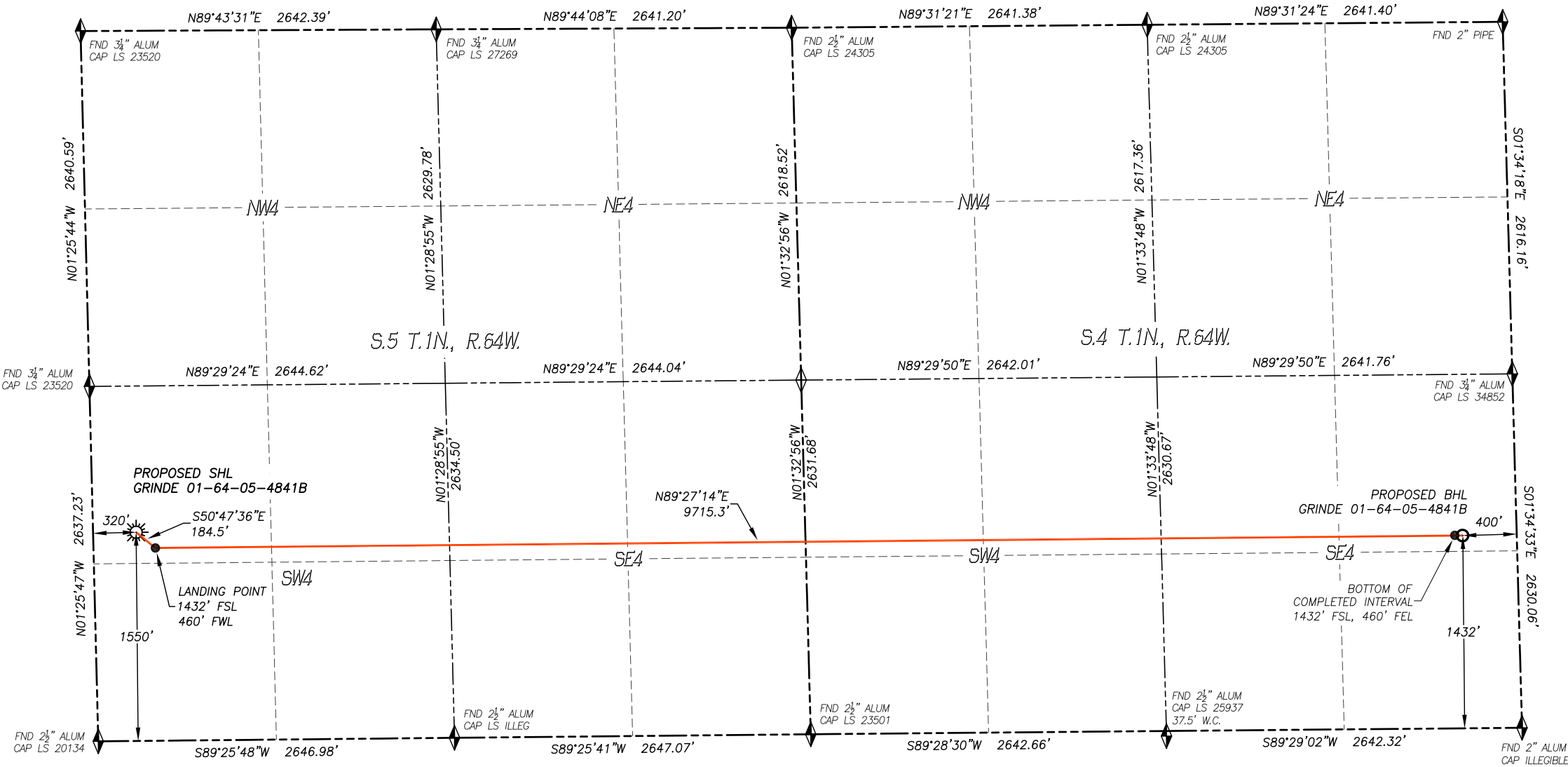


WELL LOCATION CERTIFICATE  
GRINDE 01-64-05-4841B

SECTION 5, TOWNSHIP 1 NORTH, RANGE 64 WEST OF THE 6TH P.M., WELD COUNTY



IN ACCORDANCE WITH A REQUEST FROM BILL BARRETT CORP., DALEY LAND SURVEYING, INC. HAS DETERMINED THE SURFACE LOCATION OF THE GRINDE 01-64-05-4841B WELL TO BE 1550' FSL, 320' FWL, AS MEASURED AT NINETY (90) DEGREES FROM THE SECTION LINES OF SECTION 5, TOWNSHIP 1 NORTH, RANGE 64 WEST AND THE BOTTOM HOLE LOCATION TO BE 1432' FSL, 400' FEL, AS MEASURED AT NINETY (90) DEGREES FROM THE SECTION LINES OF SECTION 4, TOWNSHIP 1 NORTH, RANGE 64 WEST, OF THE 6TH PRINCIPAL MERIDIAN, WELD COUNTY, COLORADO.

I HEREBY STATE THAT THIS WELL LOCATION CERTIFICATE WAS PREPARED BY ME OR UNDER MY DIRECT SUPERVISION, THAT THE WORK WAS COMPLETED ON 11/2/2017 FOR AND ON BEHALF OF BILL BARRETT CORP., AND THAT THIS MAP DOES NOT REPRESENT A BOUNDARY SURVEY, IT IS NOT A LAND SURVEY PLAT OR AN IMPROVEMENT SURVEY PLAT AND IT IS NOT TO BE RELIED UPON FOR THE ESTABLISHMENT OF FENCE, BUILDING OR OTHER FUTURE IMPROVEMENT LINES.

- NOTES:**
- 1) BEARINGS FOR THIS MAP ARE ASSUMED AND BASED UPON GPS OBSERVATIONS MADE BETWEEN MONUMENTS LOCATED AT THE NORTH QUARTER CORNER AND NORTHEAST CORNER OF SECTION 5, T.1N., R.64W.
  - 2) HORIZONTAL DATUM IS NAD83.
  - 3) VERTICAL DATUM IS NAVD88 AND ORIGINATES FROM THE LOCAL C.O.R.S. NETWORK, UTILIZING THE GEOID12A MODEL.
  - 4) SEE LOCATION DRAWING FOR VISIBLE IMPROVEMENTS WITHIN 500' OF PROPOSED DISTURBED AREA.
  - 5) SURFACE USE: AGRICULTURAL.
  - 6) INST. OPERATOR: SCOTT ESTABROOKS.

| NEAREST CULTURAL ITEMS:     |          |
|-----------------------------|----------|
| BUILDING:                   | 405'± SW |
| BUILDING UNIT:              | 680'± SW |
| HIGH OCC. BLD. UNIT:        | 5280'±   |
| DES. OUTSIDE ACTIVITY AREA: | 5280'±   |
| PUBLIC ROAD:                | 307'± W  |
| ABOVE GROUND UTILITY:       | 294'± W  |
| RAILROAD:                   | 5280'±   |
| PROPERTY LINE:              | 320'± W  |

| NAD 83 LATITUDE AND LONGITUDE |             |
|-------------------------------|-------------|
| <b>SURFACE LOCATION:</b>      |             |
| LATITUDE:                     | N40.07750°  |
| LONGITUDE:                    | W104.58311° |
| ELEV:                         | 5030'       |
| PDOP:                         | 1.3         |
| QTR/QTR:                      | NW4/SW4     |
| <b>LANDING POINT:</b>         |             |
| LATITUDE:                     | N40.07717°  |
| LONGITUDE:                    | W104.58261° |
| <b>BOTTOM COMPLETED INT.:</b> |             |
| LATITUDE:                     | N40.07715°  |
| LONGITUDE:                    | W104.54811° |
| <b>BOTTOM HOLE:</b>           |             |
| LATITUDE:                     | N40.07715°  |
| LONGITUDE:                    | W104.54790° |

- LEGEND**
- ◆ FOUND MONUMENT AS DESCRIBED
  - ☀ PROPOSED WELL
  - ⊙ EXISTING WELL
  - BOTTOM HOLE
  - ⊘ ABANDONED WELL
  - ◆ CALCULATED POSITION

