

HARLEQUIN 33-32-14HN WELL LOCATION EXHIBIT

2½" ALUM. CAP
17492, 2011

2½" ALUM. CAP
CO 17492, 2011

N89°30'27"E 2636.21'

N89°26'26"E 2653.38'

N01°02'47"E 2655.93'

S01°01'48"W 2658.65'

NOTES:
BH LOCATION PROVIDED BY CLIENT.
LAND SURFACE USE - IMPROVED PASTURE
SEE LOCATION DRAWING FOR ADDITIONAL
IMPROVEMENTS WITHIN 500'

PDOP=1.1
GPS OPERATOR: ALAN HNIZDO

SURFACE LOCATION:
GROUND ELEVATION=5012'
NAD83
LATITUDE:40.614705° N
LONGITUDE:104.203856° W

LANDING POINT LOCATION:
NAD83
LATITUDE:40.613526° N
LONGITUDE:104.204146° W

BOTTOM HOLE LOCATION:
NAD83
LATITUDE:40.613219° N
LONGITUDE:104.237978° W

33

HARLEQUIN
33-32-14HN

S10°42'21"W
436.94'

S89°24'18"W 9396.00'

LP: 975' FSL
600' FEL

S89°32'00"W 2645.47'

S89°32'00"W 2645.47'

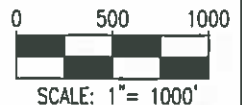
2½" ALUM. CAP
LS38175, 2011

BHL: 975 FSL
600' FWL } SEC. 32

LEGEND

- ⊕ = EXISTING MONUMENT
- = CALCULATED POSITION
- = PROPOSED WELL
- ◆ = EXISTING WELL
- ⬤ = BOTTOM HOLE
- ▲ = LANDING POINT
- LP = LANDING POINT
- BHL = BOTTOM HOLE LOCATION

WELL HARLEQUIN 33-32-14HN TO BE
LOCATED 1404' FSL & 527' FEL



NOTES

- THIS FIELD SURVEY CONFORMS TO THE MINIMUM STANDARDS SET BY THE C.O.G.C.C., RULE NO. 215
- ALL DISTANCES AND BEARINGS SHOWN HEREON ARE GROUND VALUES AS GPS MEASURED IN THE FIELD, WITH TIES TO WELLS MEASURED PERPENDICULAR TO SECTION LINES. THIS LOW DISTORTION PROJECTION (LDP) IS BASED ON THE NORTH AMERICAN DATUM OF 1983, U.S. SURVEY FOOT WITH A LATITUDE ORIGIN OF 40.655085°N, A CENTRAL MERIDIAN LONGITUDE OF 104.086861°W, AND A SCALE FACTOR ON THE CENTRAL MERIDIAN OF 1.000232 (EXACT). THE LDP BASIS OF BEARINGS IS GEODETIC NORTH.
- FIELD VERIFICATION OF MONUMENTS COMPLETED WITHIN 1 YEAR OF SIGNATURE DATE, UNLESS OTHERWISE NOTED.

I, ROBERT J. GUFFEY, A LICENSED PROFESSIONAL LAND SURVEYOR IN THE STATE OF COLORADO, DO HEREBY STATE TO MALLARD EXPLORATION THAT THE SURVEY AND WELL LOCATION EXHIBIT SHOWN HEREON WAS PREPARED BY ME OR UNDER MY DIRECT SUPERVISION AND THE DRAWING SHOWN HEREON ACCURATELY DEPICTS THE PROPOSED LOCATION OF THE WELL. THIS EXHIBIT MEETS THE REQUIREMENTS OF A GIS LAND POSITION AS DEFINED BY SECTION 38-51-102 (7.5) C.R.S. AND AS SUCH PER SECTION 38-51-109.3 C.R.S. CANNOT BE RELIED UPON TO DETERMINE OWNERSHIP.

ROBERT J. GUFFEY, PLS 20680
COLORADO LICENSED PROFESSIONAL LAND SURVEYOR
FOR AND ON BEHALF OF P.F.S., LLC



NOTICE: ACCORDING TO COLORADO LAW YOU MUST COMMENCE ANY LEGAL ACTION BASED UPON ANY DEFECT IN THIS SURVEY WITHIN THREE YEARS AFTER YOU FIRST DISCOVER SUCH DEFECT. IN NO EVENT MAY ANY ACTION BASED UPON ANY DEFECT IN THIS SURVEY BE COMMENCED MORE THAN TEN YEARS FROM THIS SAID DATE OF THIS CERTIFICATION SHOWN HEREON.



FIELD DATE
12-13-17
DRAWING DATE
12-14-17
BY
MJE
CHECKED
SMF

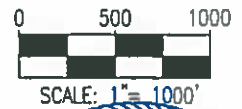
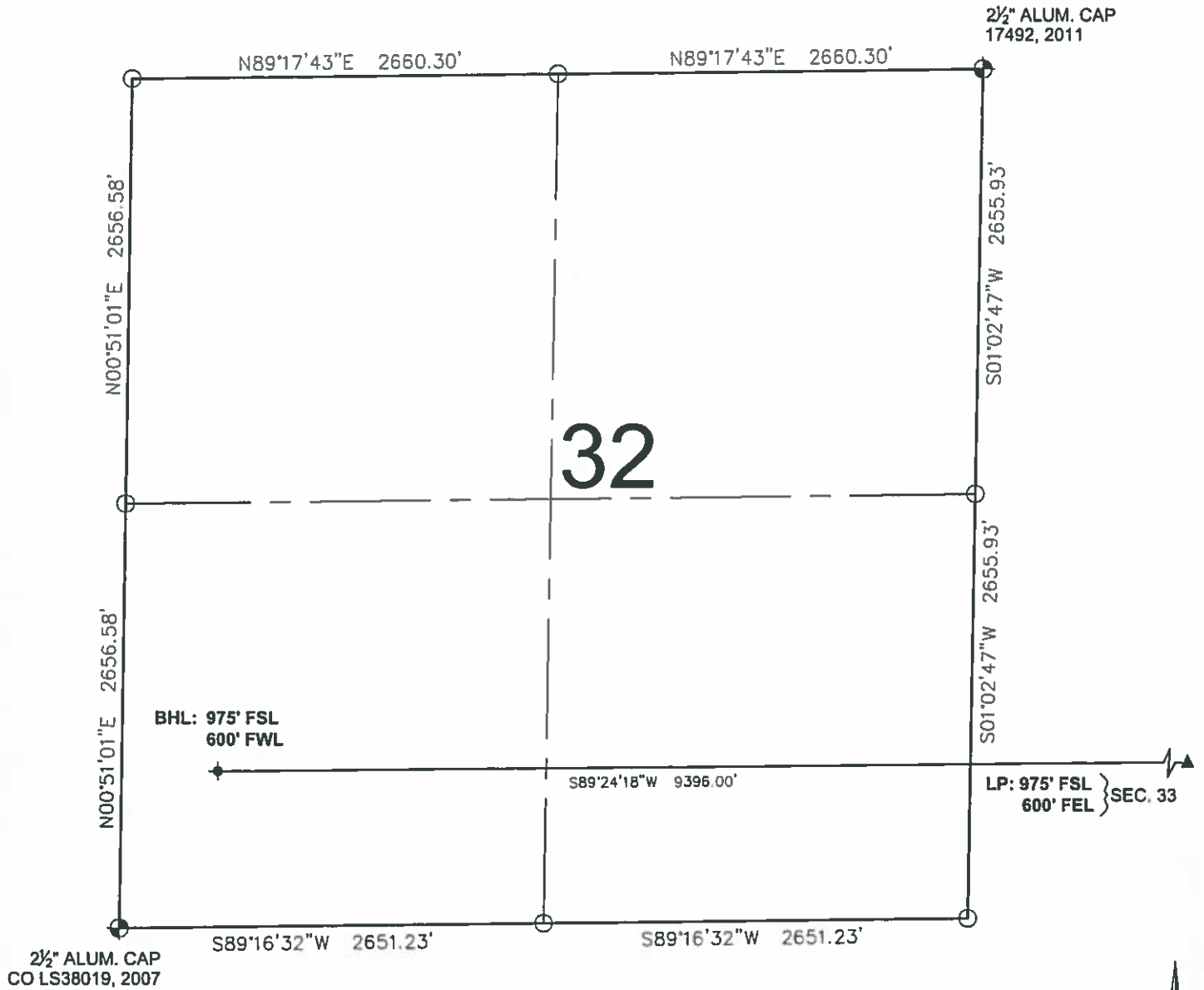
WELL NAME
HARLEQUIN 33-32-14HN
SURFACE LOCATION
NE 1/4 SE 1/4 SEC. 33, T8N, R61W, 6TH P.M.
WELD COUNTY, COLORADO

PREPARED FOR:



SHEET 1 OF 2

HARLEQUIN 33-32-14HN WELL LOCATION EXHIBIT



LEGEND

- ⊕ = EXISTING MONUMENT
- = CALCULATED POSITION
- = PROPOSED WELL
- ◆ = EXISTING WELL
- ⬮ = BOTTOM HOLE
- ▲ = LANDING POINT
- LP = LANDING POINT
- BHL = BOTTOM HOLE LOCATION

ROBERT J. GUFFEY, PLS 20680
COLORADO LICENSED PROFESSIONAL LAND SURVEYOR
FOR AND ON BEHALF OF P.F.S., LLC

SHEET 2 OF 2



7535 Hilltop Circle
Denver, CO 80221
(303) 928-7128
www.ascentgeomatics.com

FIELD DATE
12-13-17

DRAWING DATE
12-14-17

BY
MJE

CHECKED
SMF

WELL NAME
HARLEQUIN 33-32-14HN

SURFACE LOCATION
NE 1/4 SE 1/4 SEC. 33, T8N, R61W, 6TH P.M.
WELD COUNTY, COLORADO

PREPARED FOR:

