

Great Western Operating Company, LLC

Location Colorado
Field Wattenburg
Installation Tollway
Slot S07 - Tollway LC 24-375HNX
Well Tollway LC 24-375HNX
Wellbore Tollway LC 24-375HNX (PWB)

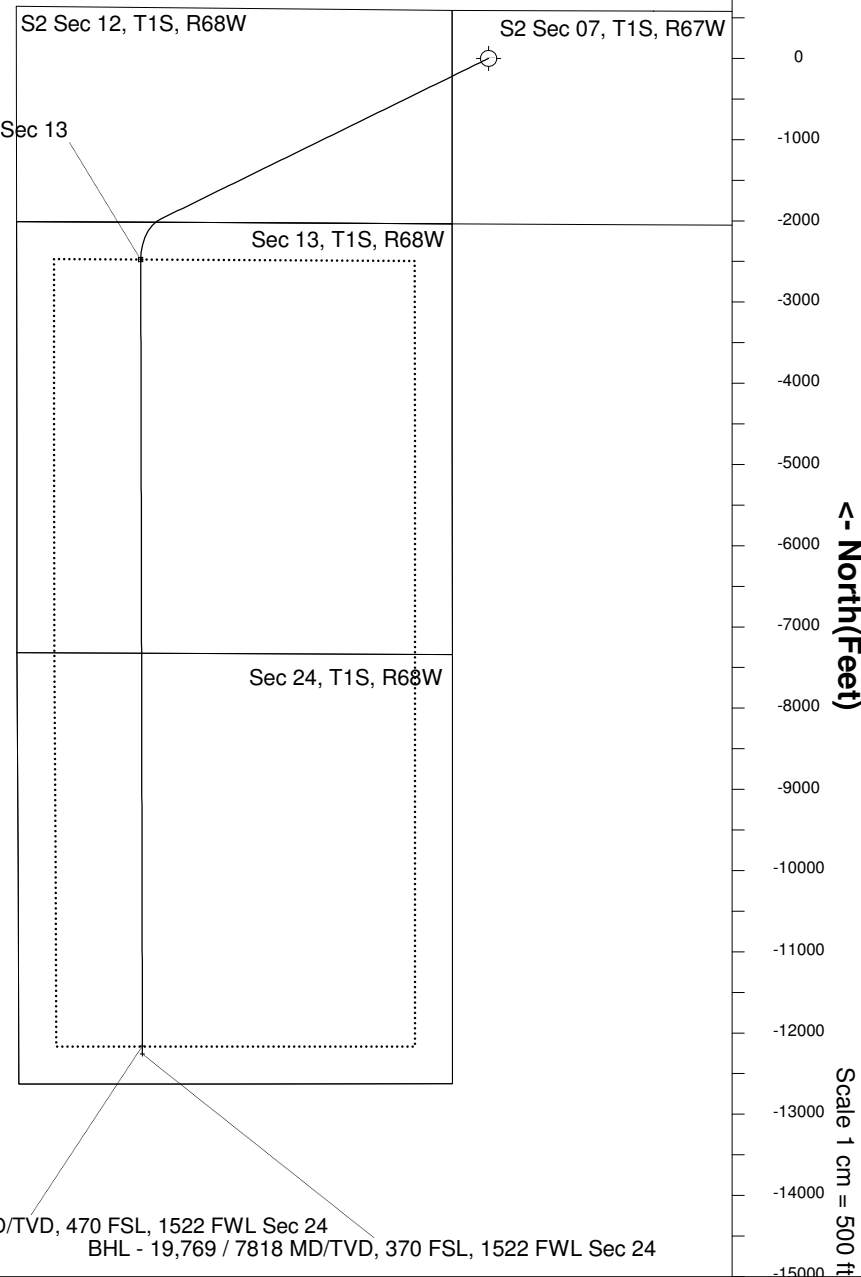
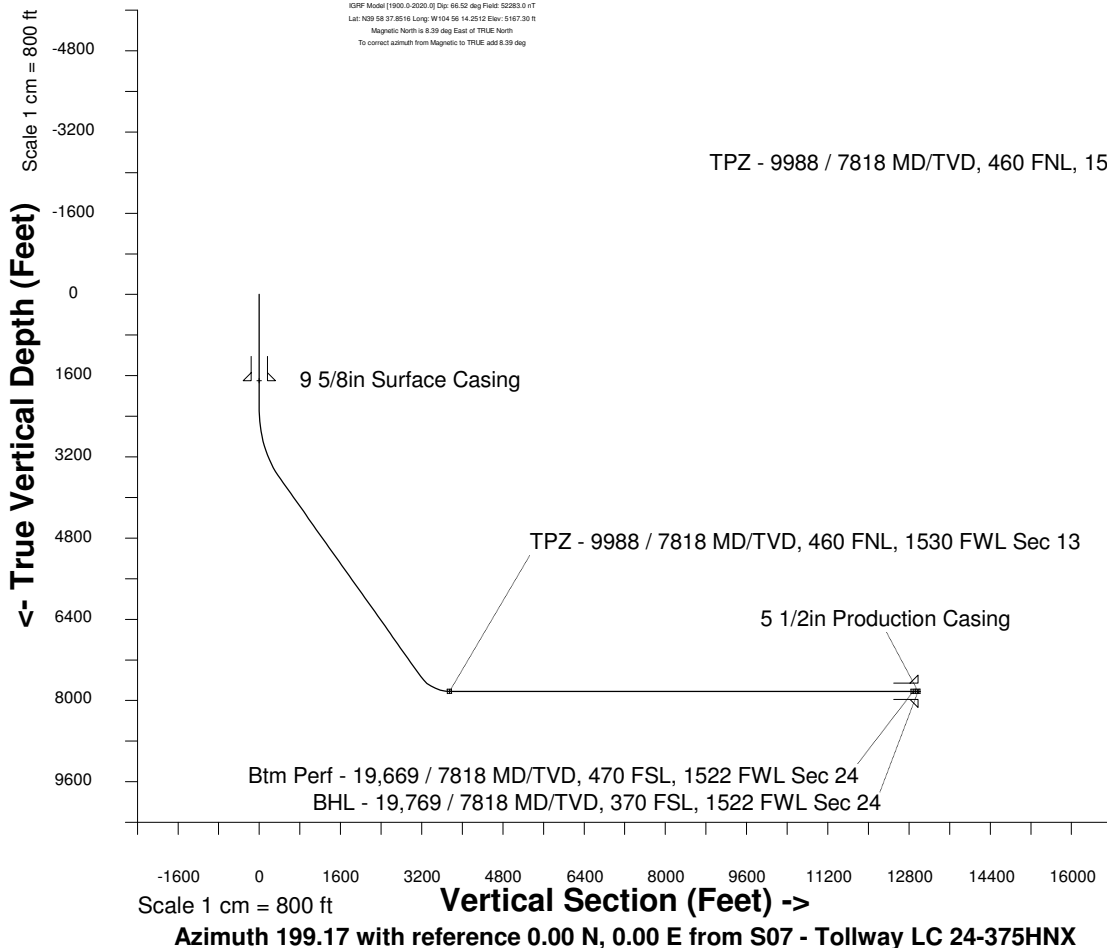
Scale 1 cm = 500 ft

East (Feet) ->

-10000 -9000 -8000 -7000 -6000 -5000 -4000 -3000 -2000 -1000 0 1000 2000 3000

Created by admin
Date plotted 17-Jan-2018
Plot reference is Tollway LC 24-375HNX (PWB).
Ref wellpath is Tollway LC 24-375HNX (PWP#1).
Coordinates are in Feet reference S07 - Tollway LC 24-375HNX.
True Vertical Depths are reference Rig Datum.
Measured Depths are reference Rig Datum.
Rig Datum: Planned Datum #1
Rig Datum to Mean Sea Level: 5187.30 ft.
Plot North is aligned to TRUE North.

20-Apr-2016
KOPF Model [1900.0-2020.0] Dip: 66.52 deg Field: 52283.0 nT
Lat: N29 58 37.8516 Long: W104 56 14.2512 Elev: 5167.30 ft
Magnetic North is 6.39 deg East of TRUE North
To correct azimuth from Magnetic to TRUE, add 6.39 deg



WELL PROFILE DATA

Point	MD	Inc	Azi	TVD	North	East	deg/100ft	V. Sect
Tie on	0.00	0.00	0.00	0.00	S 0.00	W 0.00		-0.00
KOP	2257.00	0.00	243.89	2257.00	S 0.00	W 0.00	0.00	-0.00
End of Build	3757.06	45.00	243.89	3607.52	S 246.17	W 502.35	9.84	397.50
End of Hold	9333.67	45.00	243.89	7550.66	S 1981.40	W 4043.43	0.00	3199.44
Target TPZ - ...Sec 13	9987.77	90.00	179.88	7818.00	S 2477.14	W 4282.73	36.09	3746.27
Target Btm Pe...Sec 24	19669.03	90.00	179.88	7818.00	S 12158.37	W 4262.53	0.00	12883.87
End of Turn	19669.31	90.00	179.85	7818.00	S 12158.66	W 4262.53	36.09	12884.14
T.D. & Target BHL... 24	19768.84	90.00	179.85	7818.00	S 12258.19	W 4262.26	0.00	12978.06

Btm Perf - 19,669 / 7818 MD/TVD, 470 FSL, 1522 FWL Sec 24
BHL - 19,769 / 7818 MD/TVD, 370 FSL, 1522 FWL Sec 24