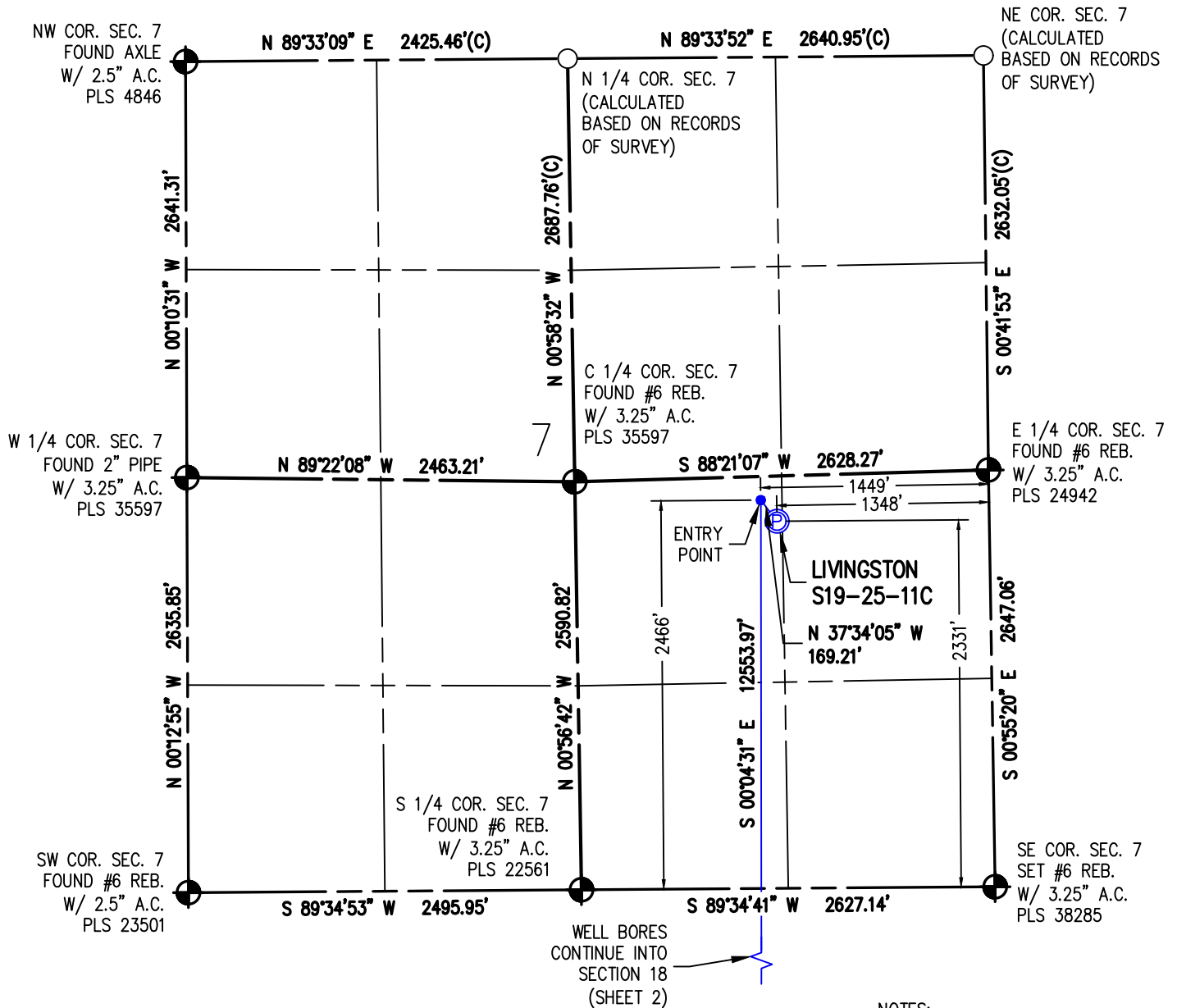


# WELL LOCATION PLAT LIVINGSTON S19-25-11C

NW1/4 SE1/4 SEC. 7, T1S, R68W, 6TH P.M.



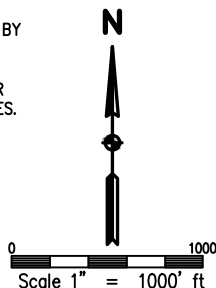
## NOTES:

1. INDICATES SECTION CORNER
2. INDICATES CALCULATED CORNER
3. (C) INDICATES CALCULATED DIMENSION
4. ELEVATION BASED ON NAVD88 (GEOID12B)
5. BEARINGS DERIVED FROM COLORADO COORDINATE SYSTEM OF 1983 NORTH ZONE.
6. OPERATOR: TRAVIS WINNICKI
7. IMPROVEMENTS: SEE LOCATION DRAWING FOR ALL VISIBLE IMPROVEMENTS WITHIN 500' OF DISTURBED AREA.
8. WELL FOOTAGES ARE MEASURED AT RIGHT ANGLES TO THE SECTION LINES.

SURFACE LOCATION  
SEC. 7, T1S, R68W  
GROUND ELEVATION = 5323.6'  
PDOP = 1.3  
LATITUDE = 39.978561°  
LONGITUDE = -105.039480°  
2331' FSL, 1348' FEL  
ENTRY POINT LOCATION  
SEC. 7, T1S, R68W  
LATITUDE = 39.978931°  
LONGITUDE = -105.039845°  
2466' FSL, 1449' FEL  
BOTTOM HOLE LOCATION  
SEC. 19, T1S, R68W  
LATITUDE = 39.944478°  
LONGITUDE = -105.040019°  
460' FSL, 1573' FEL

I HEREBY CERTIFY THAT THIS WELL LOCATION CERTIFICATE WAS PREPARED BY ME, OR UNDER MY DIRECT SUPERVISION, THAT THE FIELD WORK WAS COMPLETED ON 11/10/2017, THAT IT IS NOT A LAND SURVEY PLAT OR AN IMPROVEMENT SURVEY PLAT, AND THAT IT IS NOT TO BE RELED UPON FOR ESTABLISHMENT OF FENCE, BUILDING OR OTHER FUTURE IMPROVEMENT LINES.

AARON A. DEMO  
Professional Land Surveyor Registration No. 38285  
State of Colorado  
FOR AND ON BEHALF OF BASELINE ENGINEERING CORP.

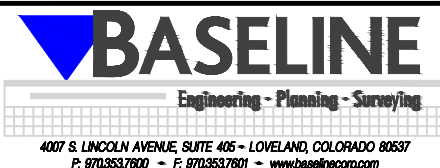


## NEAREST CULTURAL ITEMS:

BUILDING: 895' NW  
BUILDING UNIT: 1337' N  
HIGH OCCUPANCY BUILDING UNIT: 5280'+  
DESIGNATED OUTSIDE ACTIVITY AREA: 5280'+  
PUBLIC ROAD: SHERIDAN HWY. 560' SE  
ABOVE GROUND UTILITY: 1267' N  
RAILROAD: 5280'+  
PROPERTY LINE: 287' N  
SURFACE USE: GRASSLAND.  
NEAREST EXISTING WELL: LIVINGSTON 43-07 782' SE



DRAWN BY	CHECKED BY
DAM	AAD
INITIAL SUBMITTAL	12/8/2017
REVISED	NA
DRAWING SIZE	8.5" X 11"
JOB NO.	EXT01S68W07-01
SHEET	1 OF 3

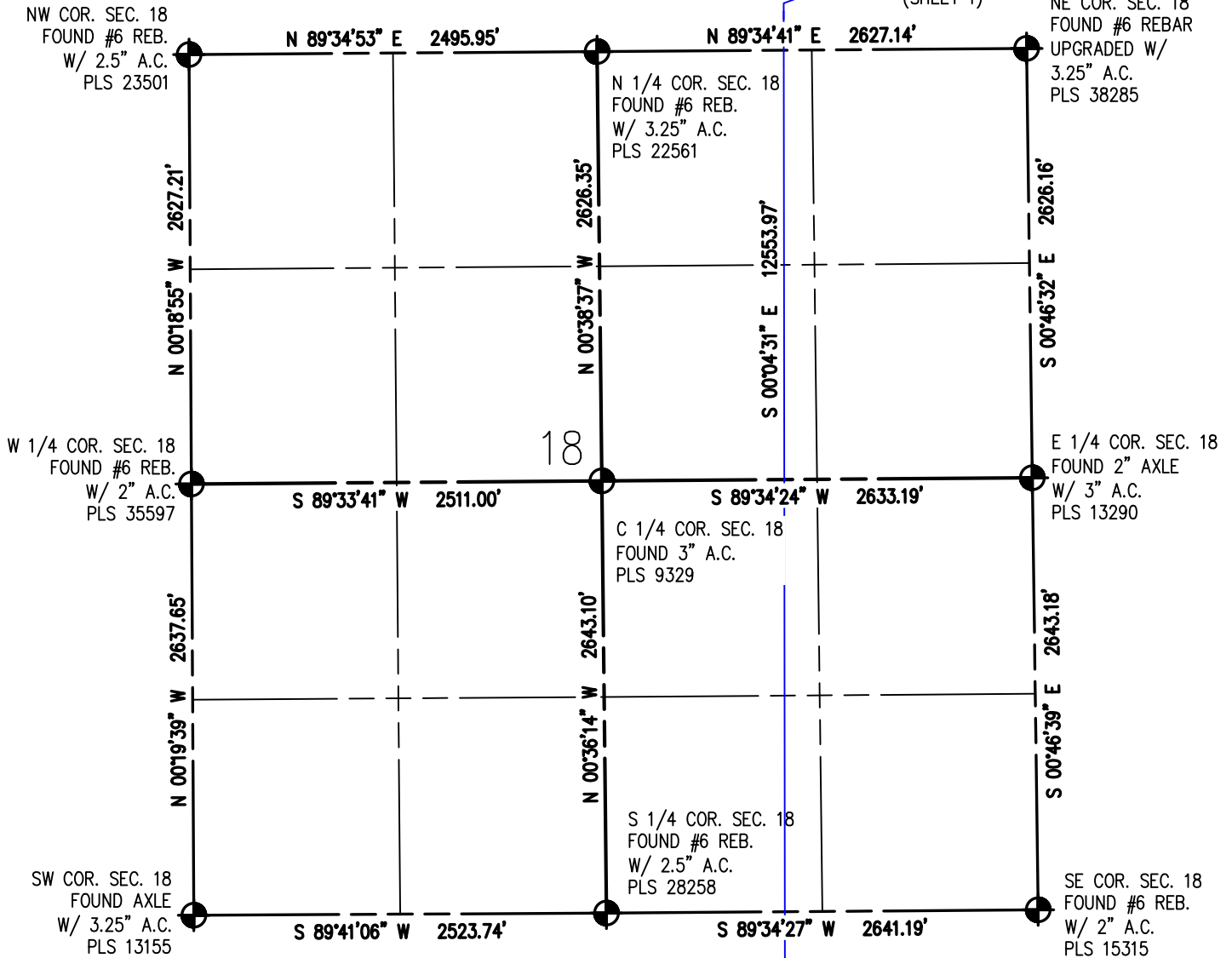


4007 S. LINCOLN AVENUE, SUITE 405 • LOVELAND, COLORADO 80537  
P: 970.353.7600 • F: 970.353.7601 • www.baselinecorp.com

# WELL LOCATION PLAT LIVINGSTON S19-25-11C

NW1/4 SE1/4 SEC. 7, T1S, R68W, 6TH P.M.

WELL BORES  
CONTINUE INTO  
SECTION 7  
(SHEET 1)



WELL BORES  
CONTINUE INTO  
SECTION 19  
(SHEET 3)

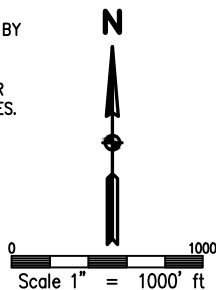
SURFACE LOCATION  
SEC. 7, T1S, R68W  
GROUND ELEVATION = 5323.6'  
PDOP = 1.3  
LATITUDE = 39.978561°  
LONGITUDE = -105.039480°  
2331' FSL, 1348' FEL  
ENTRY POINT LOCATION  
SEC. 7, T1S, R68W  
LATITUDE = 39.978931°  
LONGITUDE = -105.039845°  
2466' FSL, 1449' FEL  
BOTTOM HOLE LOCATION  
SEC. 19, T1S, R68W  
LATITUDE = 39.944478°  
LONGITUDE = -105.040019°  
460' FSL, 1573' FEL

## NOTES:

1. INDICATES SECTION CORNER
2. INDICATES CALCULATED CORNER
3. (C) INDICATES CALCULATED DIMENSION
4. ELEVATION BASED ON NAVD88 (GEOID12B)
5. BEARINGS DERIVED FROM COLORADO COORDINATE SYSTEM OF 1983 NORTH ZONE.
6. OPERATOR: TRAVIS WINNICKI
7. IMPROVEMENTS: SEE LOCATION DRAWING FOR ALL VISIBLE IMPROVEMENTS WITHIN 500' OF DISTURBED AREA.
8. WELL FOOTAGES ARE MEASURED AT RIGHT ANGLES TO THE SECTION LINES.

I HEREBY CERTIFY THAT THIS WELL LOCATION CERTIFICATE WAS PREPARED BY ME, OR UNDER MY DIRECT SUPERVISION, THAT THE FIELD WORK WAS COMPLETED ON 11/10/2017, THAT IT IS NOT A LAND SURVEY PLAT OR AN IMPROVEMENT SURVEY PLAT, AND THAT IT IS NOT TO BE RELED UPON FOR ESTABLISHMENT OF FENCE, BUILDING OR OTHER FUTURE IMPROVEMENT LINES.

AARON A. DEMO  
Professional Land Surveyor Registration No. 38285  
State of Colorado  
FOR AND ON BEHALF OF BASELINE ENGINEERING CORP.



## NEAREST CULTURAL ITEMS:

BUILDING: 895' NW  
BUILDING UNIT: 1337' N  
HIGH OCCUPANCY BUILDING UNIT: 5280'+  
DESIGNATED OUTSIDE ACTIVITY AREA: 5280'+  
PUBLIC ROAD: SHERIDAN HWY 560' SE  
ABOVE GROUND UTILITY: 1267' N  
RAILROAD: 5280'+  
PROPERTY LINE: 287' N  
SURFACE USE: GRASSLAND.  
NEAREST EXISTING WELL: LIVINGSTON 43-07 782' SE



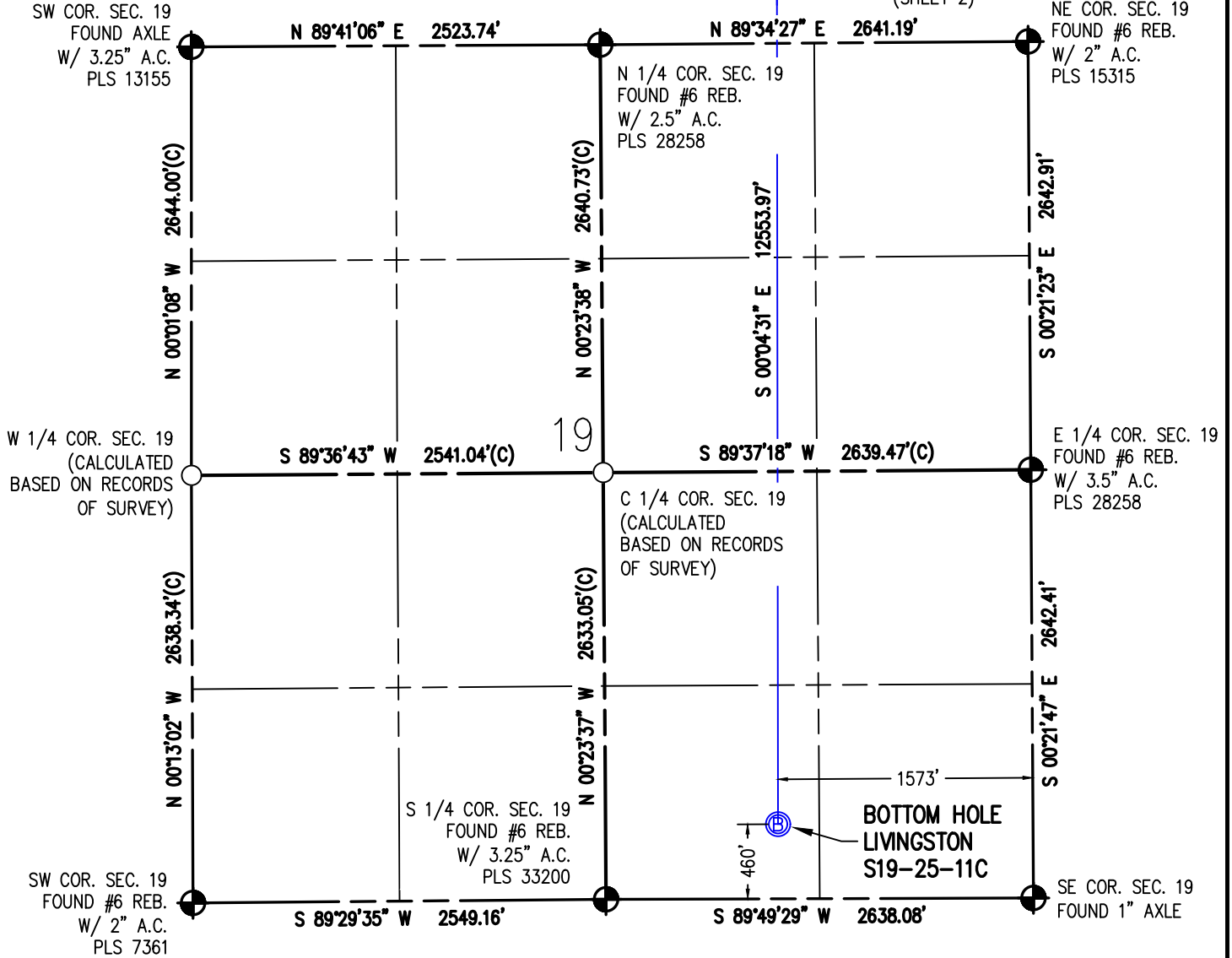
DRAWN BY DAM	CHECKED BY AAD
INITIAL SUBMITTAL 12/8/2017	
REVISED NA	
DRAWING SIZE 8.5" X 11"	
JOB NO. EXT01S68W07-01	
SHEET 2 OF 3	

**BASELINE**  
Engineering - Planning - Surveying  
4007 S. LINCOLN AVENUE, SUITE 405 • LOVELAND, COLORADO 80537  
P: 970.353.7600 • F: 970.353.7601 • www.baselinecorp.com

# WELL LOCATION PLAT LIVINGSTON S19-25-11C

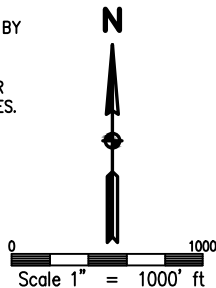
NW1/4 SE1/4 SEC. 7, T1S, R68W, 6TH P.M.

WELL BORES  
CONTINUE INTO  
SECTION 18  
(SHEET 2)



I HEREBY CERTIFY THAT THIS WELL LOCATION CERTIFICATE WAS PREPARED BY ME, OR UNDER MY DIRECT SUPERVISION, THAT THE FIELD WORK WAS COMPLETED ON 11/10/2017, THAT IT IS NOT A LAND SURVEY PLAT OR AN IMPROVEMENT SURVEY PLAT, AND THAT IT IS NOT TO BE RELED UPON FOR ESTABLISHMENT OF FENCE, BUILDING OR OTHER FUTURE IMPROVEMENT LINES.

AARON A. DEMO  
Professional Land Surveyor Registration No. 38285  
State of Colorado  
FOR AND ON BEHALF OF BASELINE ENGINEERING CORP.



SURFACE LOCATION  
SEC. 7, T1S, R68W  
GROUND ELEVATION = 5323.6'  
PDOP = 1.3  
LATITUDE = 39.978561"  
LONGITUDE = -105.039480"  
2331' FSL, 1348' FEL  
ENTRY POINT LOCATION  
SEC. 7, T1S, R68W  
LATITUDE = 39.978931"  
LONGITUDE = -105.039845"  
2466' FSL, 1449' FEL  
BOTTOM HOLE LOCATION  
SEC. 19, T1S, R68W  
LATITUDE = 39.944478"  
LONGITUDE = -105.040019"  
460' FSL, 1573' FEL

## NOTES:

1. ● INDICATES SECTION CORNER
2. ○ INDICATES CALCULATED CORNER
3. (C) INDICATES CALCULATED DIMENSION
4. ELEVATION BASED ON NAVD88 (GEOID12B)
5. BEARINGS DERIVED FROM COLORADO COORDINATE SYSTEM OF 1983 NORTH ZONE.
6. OPERATOR: TRAVIS WINNICKI
7. IMPROVEMENTS: SEE LOCATION DRAWING FOR ALL VISIBLE IMPROVEMENTS WITHIN 500' OF DISTURBED AREA.
8. WELL FOOTAGES ARE MEASURED AT RIGHT ANGLES TO THE SECTION LINES.

## NEAREST CULTURAL ITEMS:

BUILDING: 895' NW  
BUILDING UNIT: 1337' N  
HIGH OCCUPANCY BUILDING UNIT: 5280'+  
DESIGNATED OUTSIDE ACTIVITY AREA: 5280'+  
PUBLIC ROAD: SHERIDAN HWY 560' SE  
ABOVE GROUND UTILITY: 1267' N  
RAILROAD: 5280'+  
PROPERTY LINE: 287' N  
SURFACE USE: GRASSLAND.  
NEAREST EXISTING WELL: LIVINGSTON 43-07 782' SE



DRAWN BY DAM	CHECKED BY AAD
INITIAL SUBMITTAL 12/8/2017	
REVISED NA	
DRAWING SIZE 8.5" X 11"	
JOB NO. EXT01S68W07-01	
SHEET 3 of 3	

