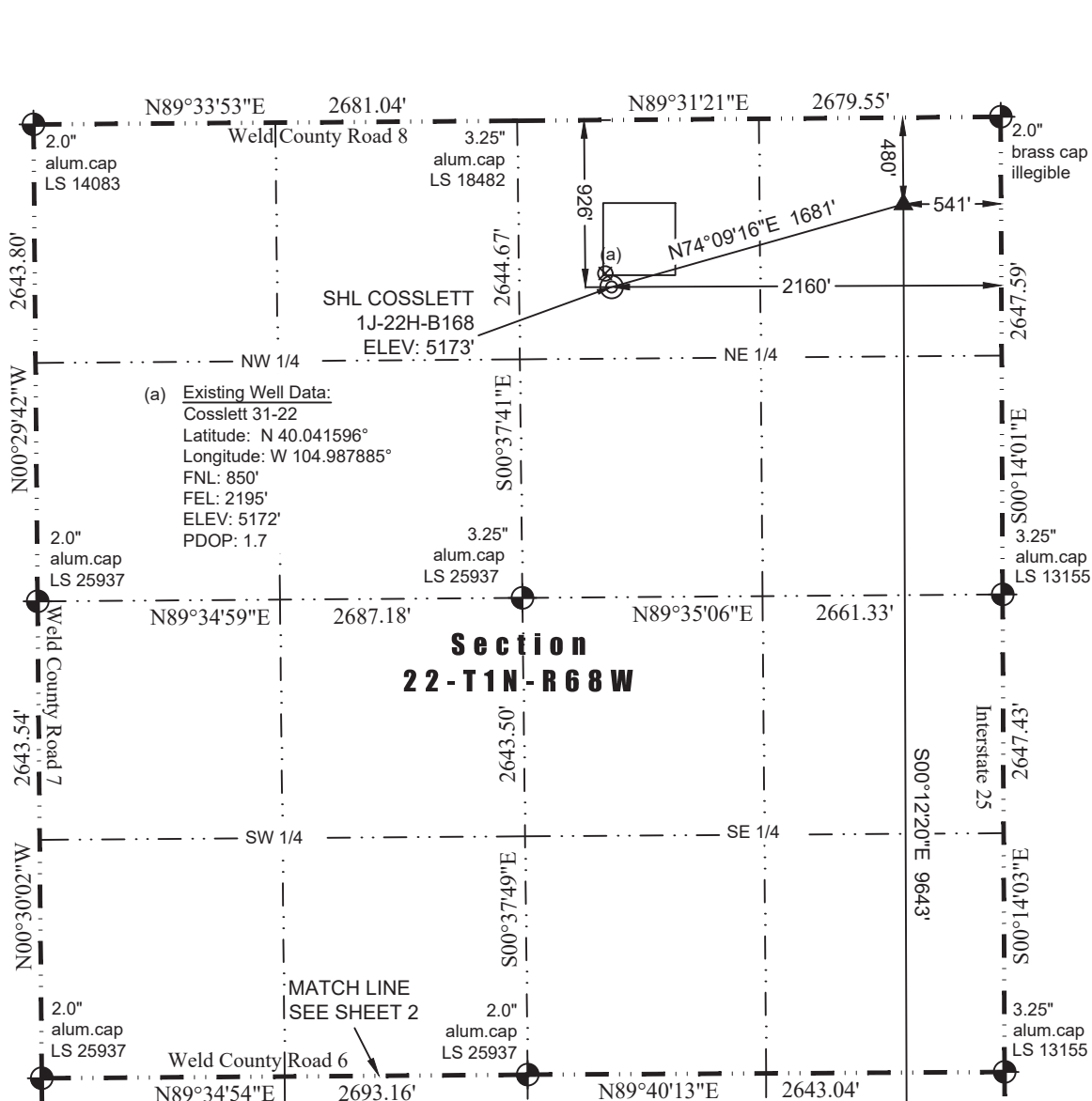


# WELL LOCATION CERTIFICATE

THIS MAP DOES NOT REPRESENT A BOUNDARY SURVEY



In accordance with a request from Jay Knutson of Crestone Peak Resources, Washburn Land Surveying, LLC has determined the location of the **COSSLETT 1J-22H-B168** well site to be SHL: 926' FNL and 2160' FEL, (TPZ: 480' FNL and 541' FEL), (BHL: 460' FSL and 530' FEL), as measured at ninety (90) degrees from the section lines of Sections 22 and 27, Township 1 North, Range 68 West of the 6th Principal Meridian, Weld County Colorado.

**Proposed Surface Hole Data:**  
 Latitude: N 40.041390°  
 Longitude: W 104.987762°  
 PDOP: 2.0

**Proposed TPZ Data:**  
 Latitude: N 40.042624°  
 Longitude: W 104.981975°

**Proposed Bottom Hole Data:**  
 Latitude: N 40.016154°  
 Longitude: W 104.982053°

**Nearest Cultural Items:**  
 Building: 1373' SW  
 Building Unit: 2031' SE  
 Above Ground Utility: 885' N  
 Public Road: 908' N  
 Well window: SHL is 65' outside

Property Line: 397' S  
 Railroad: +5280'  
 High Occupancy Building Unit: 4661' NE  
 Designated Outside Activity Area: +5280'  
 Existing Well: Cosslett 31-22, 83' NW

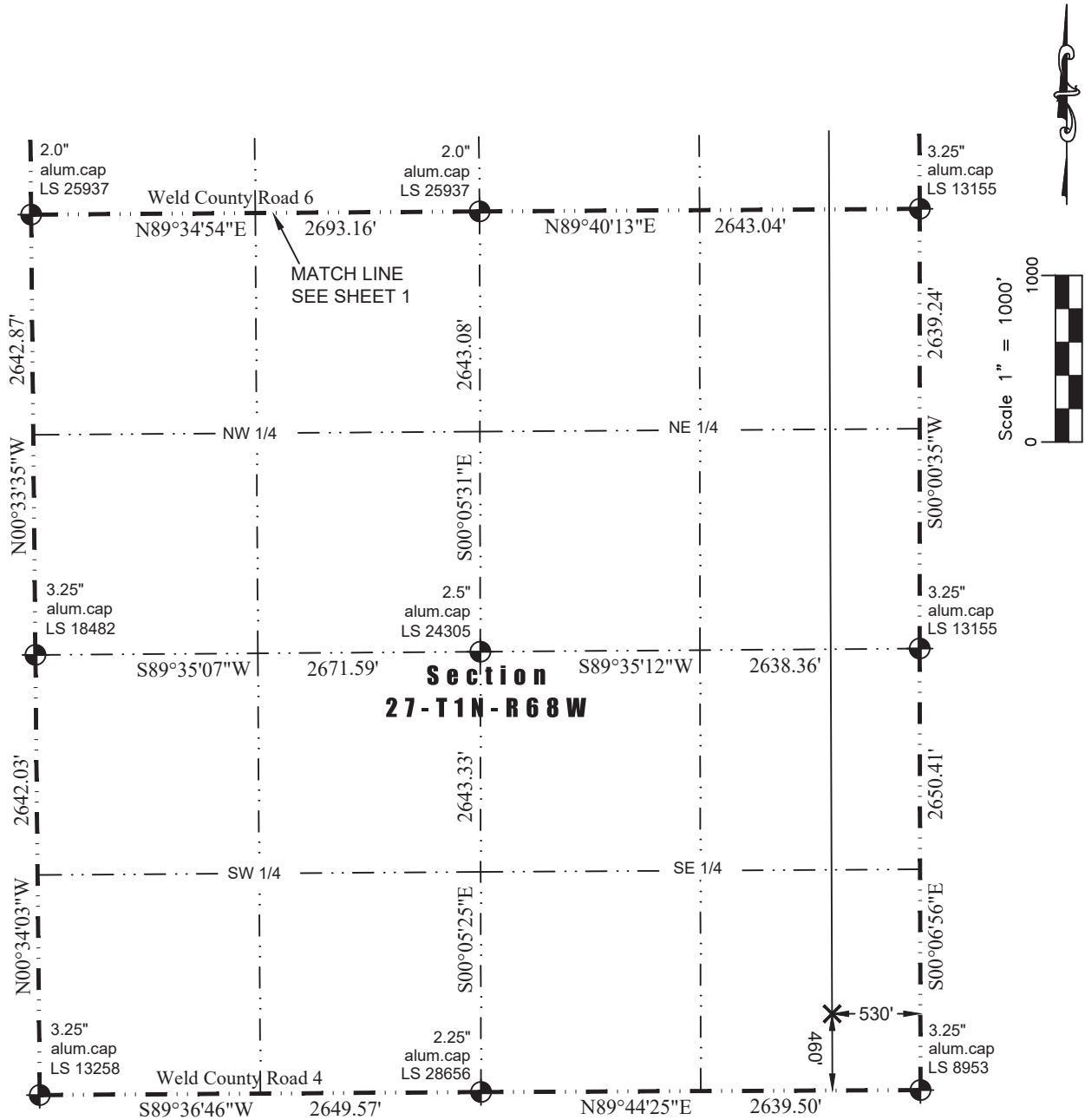
**Notes:**

- 1) Bearings and distances based on NAD 83 Colorado North State Plane Coordinate, using RTK GPS observations taken 3/24/15 by operator Jason Dahlman.
- 2) Conversion factor to ground (1.0002587651).
- 3) Elevations based on NAVD 88 GPS heights and Geoid 2009 corrections.
- 4) See Location Drawing for visible improvements within 500 feet of Pad Site.
- 5) The surface use is a cultivated field.

**NOTICE:** According to Colorado law you must commence any legal action based upon any defect in this W.L.C. within three years after you first discover such defect. In no event may any action based upon any defect in this W.L.C. be commenced more than ten years from this said date of the certification shown hereon.

# WELL LOCATION CERTIFICATE

THIS MAP DOES NOT REPRESENT A BOUNDARY SURVEY



## LEGEND

- ⊕ - Found Survey Monument
- ⊙ - Calculated Position
- ⊙ - Surface Hole Location (SHL)
- ▲ - Top of Producing Zone (TPZ)
- ✕ - Bottom Hole Location (BHL)