

SRC ENERGY

Location: COLORADO Slot: SLOT#20 GREELEY-ROTHER FEDERAL 13C-2-L (1023'FSL & 294'FEL, SEC.01)
Field: WELD COUNTY (NAD83, TRUE NORTH) Well: GREELEY-ROTHER FEDERAL 13C-2-L
Facility: SEC.01-T05N-R67W Wellbore: GREELEY-ROTHER FEDERAL 13C-2-L PWB

Plot reference wellpath is GREELEY-ROTHER FEDERAL 13C-2-L PWP (REV-A.0)	Grid System: NAD83 / Lambert Colorado SP, Northern Zone (501), US feet
True vertical depths are referenced to PRECISION 462 (20) (RKB)	* = Wellpath was transformed from a different geodetic datum
Measured depths are referenced to PRECISION 462 (20) (RKB)	North Reference: True north
PRECISION 462 (20) (RKB) to Mean Sea Level: 4892 feet	Scale: True distance
Mean Sea Level to Mud line (At Slot: SLOT#20 GREELEY-ROTHER FEDERAL 13C-2-L (1023'FSL & 294'FEL, SEC.01)): 0 feet	Depths are in feet
Coordinates are in feet referenced to Slot	Created by: doddanna on 2017-10-04
	Database: WellArchitectDB

Location Information

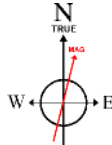
Facility Name			Grid East (US ft)	Grid North (US ft)	Latitude	Longitude
SEC.01-T05N-R67W			3185545.499	1399477.355	40°25'40.991"N	104°50'00.640"W
Slot	Local N (ft)	Local E (ft)	Grid East (US ft)	Grid North (US ft)	Latitude	Longitude
SLOT#20 GREELEY-ROTHER FEDERAL 13C-2-L (1023'FSL & 294'FEL, SEC.01)	-1344.72	1.70	3185567.306	1399132.738	40°25'27.703"N	104°50'00.618"W
PRECISION 462 (20) (RKB) to Mud line (At Slot: SLOT#20 GREELEY-ROTHER FEDERAL 13C-2-L (1023'FSL & 294'FEL, SEC.01))					4892ft	
Mean Sea Level to Mud line (At Slot: SLOT#20 GREELEY-ROTHER FEDERAL 13C-2-L (1023'FSL & 294'FEL, SEC.01))					0ft	
PRECISION 462 (20) (RKB) to Mean Sea Level					4892ft	

Survey Program

Start MD (ft)	End MD (ft)	Tool	Model	Log Name/Comment	Wellbore
20.00	1750.00	BHI NavTrak	Custom BHI NavTrak (Standard Rotating+Metal Corr) (Rockies 0.03G model)		GREELEY-ROTHER FEDERAL 13C-2-L PWB
1750.00	17476.97	BHI AutoTrak Curve	Custom BHI AutoTrak Curve (FR1, Short) (Rockies 0.03G model)		GREELEY-ROTHER FEDERAL 13C-2-L PWB

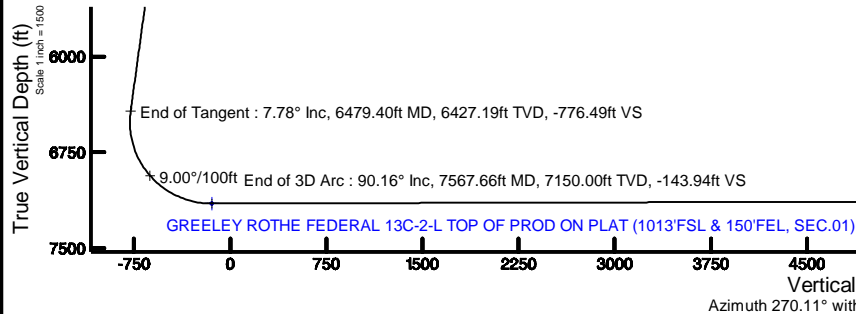


SRC ENERGY



BGGM (1900.0 to 2018.0) Dip: 66.87° Field: 52416.1 nT
Magnetic North is 8.39 degrees East of True North (at 9/22/2017)

To correct azimuth from Magnetic to True add 8.39 degrees



Targets

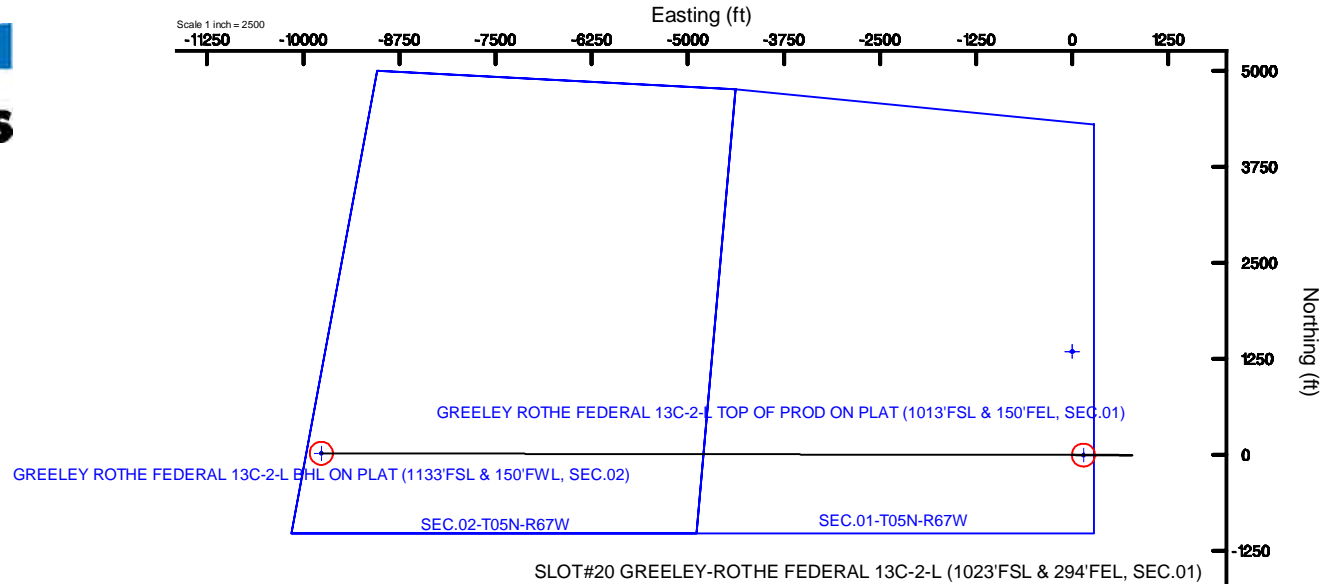
Name	MD (ft)	TVD (ft)	Local N (ft)	Local E (ft)	Grid East (US ft)	Grid North (US ft)	Latitude	Longitude	
SEC.01-T05N-R67W		22.00	1344.72	-1.70	3185545.50	1399477.36	40°25'40.991"N	104°50'00.640"W	
SEC.02-T05N-R67W		22.00	1344.72	-1.70	3185545.50	1399477.36	40°25'40.991"N	104°50'00.640"W	
GREELEY ROTHE FEDERAL 13C-2-L BHL ON PLAT (1133'FSL & 150'FWL, SEC.02)		17476.97	7122.00	18.33	-9765.32	3175792.52	1398077.67	40°25'27.865"N	104°50'06.884"W
GREELEY ROTHE FEDERAL 13C-2-L TOP OF PROD ON PLAT (1013'FSL & 150'FEL, SEC.01)		7567.66	7150.00	-4.76	143.93	3185701.26	1398129.06	40°25'27.866"N	104°49'58.757"W

Hole and Casing Sections

Name	Start MD (ft)	End MD (ft)	Interval (ft)	Start TVD (ft)	End TVD (ft)	Start Local N (ft)	Start Local E (ft)	End Local N (ft)	End Local E (ft)	Wellbore
13.5in Open Hole	20.00	1750.00	1730.00	20.00	1741.34	0.00	0.00	-1.00	136.17	GREELEY-ROTHER FEDERAL 13C-2-L PWB
9.625in Casing Surface	20.00	1750.00	1730.00	20.00	1741.34	0.00	0.00	-1.00	136.17	GREELEY-ROTHER FEDERAL 13C-2-L PWB
8.5in Open Hole	1750.00	17476.97	15726.97	1741.34	7122.00	-1.00	136.17	18.33	-9765.32	GREELEY-ROTHER FEDERAL 13C-2-L PWB

Well Profile Data

Design Comment	MD (ft)	Inc (°)	Az (°)	TVD (ft)	Local N (ft)	Local E (ft)	DLS (°/100ft)	VS (ft)
Tie On	20.00	0.000	90.423	20.00	0.00	0.00	0.00	0.00
End of Tangent	550.00	0.000	90.423	550.00	0.00	0.00	0.00	0.00
End of Build	939.07	7.781	90.423	937.87	-0.19	26.38	2.00	-26.38
End of Tangent	6479.40	7.781	90.423	6427.19	-5.73	776.48	0.00	-776.49
End of 3D Arc	7567.66	90.162	270.133	7150.00	-4.76	143.93	9.00	-143.94
End of Tangent	17476.97	90.162	270.133	7122.00	18.33	-9765.32	0.00	9765.34



GREELEY-ROTHE_FEDERAL_13C-2-L_PWP__REV-A.0_.las

~VERSION INFORMATION

VERS. 2.0 : CWLS LOG ASCII STANDARD-VERSION 2.0

WRAP. NO : ASCII DATA SECTION CONTAINS ONE ROW PER WELLPATH STATION

~WELL INFORMATION

#MNEM	.UNITS	DATA	:DESCRIPTION
#----	.-----	----	:-----
STRT	.ft	0.00	:START MD
STOP	.ft	17476.97	:STOP MD
STEP	.ft	0.0	:STEP (non-uniform increment)
NULL	.	-999.99	:NULL
COMP	.	SRC ENERGY	:OPERATOR
WELL	.	GREELEY-ROTHE FEDERAL 13C-2-L	:WELL
FLD	.	WELD COUNTY (NAD83,TRUE NORTH)	:FIELD
LOC	.	COLORADO	:AREA (aka: Location)
CNTY	.	N/A	:COUNTY
STAT	.	N/A	:STATE
CTRY	.	N/A	:COUNTRY
SRVC	.	Baker Hughes	:CONTRACTOR
DATE	.	10/04/2017	:LOG REV DATE
API	.		:API NUMBER

~OTHER INFORMATION

#Software: WellArchitect(R) Version 5.0

#MNEM	.UNITS	DATA	:DESCRIPTION
#----	.-----	----	:-----
WPTYPE	.	PLANNED WELLPATH	:WELLPATH TYPE
FACILITY	.	SEC.01-T05N-R67W	:FACILITY
SLOT	.	SLOT#20 GREELEY-ROTHE FEDERAL 13C-2-L (1023'FSL & 294'FEL, SEC.01):SLOT	
WELLBORE	.	GREELEY-ROTHE FEDERAL 13C-2-L PWB	:WELLBORE
WELLPATH	.	GREELEY-ROTHE FEDERAL 13C-2-L PWP (REV-A.0):WELLPATH	
MDREFPT	.	PRECISION 462 (20') (RKB)	:MD REFERENCE POINT
TVDREFPT	.	PRECISION 462 (20') (RKB)	:TVD REFERENCE POINT
LCLREFPT	.	Slot	:LOCAL COORDINATE REFERENCE PT

GREELEY-ROTHER_FEDERAL_13C-2-L_PWP__REV-A.0_.las

VSAZIMUTH.deg	270.11	:VERTICAL SECTION AZIMUTH
VSORIGIN .ft	0.00	:VERTICAL SECTION ORIGIN NORTH
VSORIGE .ft	0.00	:VERTICAL SECTION ORIGIN EAST

~CURVE (WELLPATH) INFORMATION

#MNEM	.UNITS	:DESCRIPTION
#----	.-----	:-----
DEPT	.ft	:MEASURED DEPTH
INC	.deg	:INCLINATION
AZI	.deg	:AZIMUTH
TVD	.ft	:TRUE VERTICAL DEPTH
SECT	.ft	:CROSS SECTION (CURTAIN/VERTICAL)
LOCALN	.ft	:LOCAL NORTH
LOCALE	.ft	:LOCAL EAST
LAT	.deg	:LATITUDE
LONG	.deg	:LONGITUDE
DLS	.deg/100ft	:DOGLEG SEVERITY

~ASCII DATA

0.00	0.00	90.42	0.00	0.00	0.00	0.00	40.4243619	-104.8335050	0.00
20.00	0.00	90.42	20.00	0.00	0.00	0.00	40.4243619	-104.8335050	0.00
120.00	0.00	90.42	120.00	0.00	0.00	0.00	40.4243619	-104.8335050	0.00
220.00	0.00	90.42	220.00	0.00	0.00	0.00	40.4243619	-104.8335050	0.00
320.00	0.00	90.42	320.00	0.00	0.00	0.00	40.4243619	-104.8335050	0.00
420.00	0.00	90.42	420.00	0.00	0.00	0.00	40.4243619	-104.8335050	0.00
520.00	0.00	90.42	520.00	0.00	0.00	0.00	40.4243619	-104.8335050	0.00
550.00	0.00	90.42	550.00	0.00	0.00	0.00	40.4243619	-104.8335050	0.00
620.00	1.40	90.42	619.99	-0.86	-0.01	0.86	40.4243619	-104.8335019	2.00
720.00	3.40	90.42	719.90	-5.04	-0.04	5.04	40.4243618	-104.8334869	2.00
820.00	5.40	90.42	819.60	-12.71	-0.09	12.71	40.4243617	-104.8334593	2.00
920.00	7.40	90.42	918.97	-23.86	-0.18	23.86	40.4243615	-104.8334193	2.00
939.07	7.78	90.42	937.87	-26.38	-0.19	26.38	40.4243614	-104.8334103	2.00
1020.00	7.78	90.42	1018.06	-37.34	-0.28	37.34	40.4243612	-104.8333709	0.00
1120.00	7.78	90.42	1117.14	-50.88	-0.38	50.87	40.4243609	-104.8333223	0.00

GREELEY-ROTHE_FEDERAL_13C-2-L_PWP__REV-A.0_.las

1220.00	7.78	90.42	1216.22	-64.41	-0.48	64.41	40.4243606	-104.8332736	0.00
1320.00	7.78	90.42	1315.30	-77.95	-0.58	77.95	40.4243604	-104.8332250	0.00
1420.00	7.78	90.42	1414.38	-91.49	-0.68	91.49	40.4243601	-104.8331764	0.00
1520.00	7.78	90.42	1513.46	-105.03	-0.77	105.03	40.4243598	-104.8331278	0.00
1620.00	7.78	90.42	1612.53	-118.57	-0.87	118.57	40.4243595	-104.8330791	0.00
1720.00	7.78	90.42	1711.61	-132.11	-0.97	132.11	40.4243593	-104.8330305	0.00
1820.00	7.78	90.42	1810.69	-145.65	-1.07	145.65	40.4243590	-104.8329819	0.00
1920.00	7.78	90.42	1909.77	-159.19	-1.17	159.19	40.4243587	-104.8329333	0.00
2020.00	7.78	90.42	2008.85	-172.73	-1.27	172.73	40.4243584	-104.8328846	0.00
2120.00	7.78	90.42	2107.93	-186.27	-1.37	186.26	40.4243582	-104.8328360	0.00
2220.00	7.78	90.42	2207.01	-199.81	-1.47	199.80	40.4243579	-104.8327874	0.00
2320.00	7.78	90.42	2306.09	-213.35	-1.57	213.34	40.4243576	-104.8327387	0.00
2420.00	7.78	90.42	2405.17	-226.88	-1.67	226.88	40.4243573	-104.8326901	0.00
2520.00	7.78	90.42	2504.25	-240.42	-1.77	240.42	40.4243571	-104.8326415	0.00
2620.00	7.78	90.42	2603.33	-253.96	-1.87	253.96	40.4243568	-104.8325929	0.00
2720.00	7.78	90.42	2702.41	-267.50	-1.97	267.50	40.4243565	-104.8325442	0.00
2820.00	7.78	90.42	2801.49	-281.04	-2.07	281.04	40.4243562	-104.8324956	0.00
2920.00	7.78	90.42	2900.56	-294.58	-2.17	294.58	40.4243560	-104.8324470	0.00
3020.00	7.78	90.42	2999.64	-308.12	-2.27	308.12	40.4243557	-104.8323983	0.00
3120.00	7.78	90.42	3098.72	-321.66	-2.37	321.66	40.4243554	-104.8323497	0.00
3220.00	7.78	90.42	3197.80	-335.20	-2.47	335.19	40.4243551	-104.8323011	0.00
3320.00	7.78	90.42	3296.88	-348.74	-2.57	348.73	40.4243549	-104.8322525	0.00
3420.00	7.78	90.42	3395.96	-362.28	-2.67	362.27	40.4243546	-104.8322038	0.00
3520.00	7.78	90.42	3495.04	-375.82	-2.77	375.81	40.4243543	-104.8321552	0.00
3620.00	7.78	90.42	3594.12	-389.35	-2.87	389.35	40.4243541	-104.8321066	0.00
3720.00	7.78	90.42	3693.20	-402.89	-2.97	402.89	40.4243538	-104.8320580	0.00
3820.00	7.78	90.42	3792.28	-416.43	-3.07	416.43	40.4243535	-104.8320093	0.00
3920.00	7.78	90.42	3891.36	-429.97	-3.17	429.97	40.4243532	-104.8319607	0.00
4020.00	7.78	90.42	3990.44	-443.51	-3.27	443.51	40.4243530	-104.8319121	0.00
4120.00	7.78	90.42	4089.51	-457.05	-3.37	457.05	40.4243527	-104.8318634	0.00
4220.00	7.78	90.42	4188.59	-470.59	-3.47	470.58	40.4243524	-104.8318148	0.00
4320.00	7.78	90.42	4287.67	-484.13	-3.57	484.12	40.4243521	-104.8317662	0.00
4420.00	7.78	90.42	4386.75	-497.67	-3.67	497.66	40.4243519	-104.8317176	0.00
4520.00	7.78	90.42	4485.83	-511.21	-3.77	511.20	40.4243516	-104.8316689	0.00

GREELEY-ROTHE_FEDERAL_13C-2-L_PWP__REV-A.0_.las

4620.00	7.78	90.42	4584.91	-524.75	-3.87	524.74	40.4243513	-104.8316203	0.00
4720.00	7.78	90.42	4683.99	-538.29	-3.97	538.28	40.4243510	-104.8315717	0.00
4820.00	7.78	90.42	4783.07	-551.82	-4.07	551.82	40.4243508	-104.8315230	0.00
4920.00	7.78	90.42	4882.15	-565.36	-4.17	565.36	40.4243505	-104.8314744	0.00
5020.00	7.78	90.42	4981.23	-578.90	-4.27	578.90	40.4243502	-104.8314258	0.00
5120.00	7.78	90.42	5080.31	-592.44	-4.37	592.44	40.4243499	-104.8313772	0.00
5220.00	7.78	90.42	5179.39	-605.98	-4.47	605.97	40.4243497	-104.8313285	0.00
5320.00	7.78	90.42	5278.46	-619.52	-4.57	619.51	40.4243494	-104.8312799	0.00
5420.00	7.78	90.42	5377.54	-633.06	-4.67	633.05	40.4243491	-104.8312313	0.00
5520.00	7.78	90.42	5476.62	-646.60	-4.77	646.59	40.4243488	-104.8311827	0.00
5620.00	7.78	90.42	5575.70	-660.14	-4.87	660.13	40.4243486	-104.8311340	0.00
5720.00	7.78	90.42	5674.78	-673.68	-4.97	673.67	40.4243483	-104.8310854	0.00
5820.00	7.78	90.42	5773.86	-687.22	-5.07	687.21	40.4243480	-104.8310368	0.00
5920.00	7.78	90.42	5872.94	-700.76	-5.17	700.75	40.4243477	-104.8309881	0.00
6020.00	7.78	90.42	5972.02	-714.29	-5.27	714.29	40.4243474	-104.8309395	0.00
6120.00	7.78	90.42	6071.10	-727.83	-5.37	727.83	40.4243472	-104.8308909	0.00
6220.00	7.78	90.42	6170.18	-741.37	-5.47	741.36	40.4243469	-104.8308423	0.00
6320.00	7.78	90.42	6269.26	-754.91	-5.57	754.90	40.4243466	-104.8307936	0.00
6420.00	7.78	90.42	6368.34	-768.45	-5.67	768.44	40.4243463	-104.8307450	0.00
6479.40	7.78	90.42	6427.19	-776.49	-5.73	776.48	40.4243462	-104.8307161	0.00
6520.00	4.13	90.68	6467.56	-780.70	-5.77	780.70	40.4243461	-104.8307010	9.00
6620.00	4.87	269.67	6567.46	-780.06	-5.83	780.05	40.4243459	-104.8307033	9.00
6720.00	13.87	269.97	6666.02	-763.79	-5.86	763.78	40.4243458	-104.8307618	9.00
6820.00	22.87	270.04	6760.83	-732.30	-5.86	732.29	40.4243458	-104.8308749	9.00
6920.00	31.87	270.07	6849.54	-686.37	-5.81	686.36	40.4243460	-104.8310398	9.00
7020.00	40.87	270.09	6929.97	-627.13	-5.73	627.12	40.4243462	-104.8312526	9.00
7120.00	49.87	270.10	7000.15	-556.03	-5.61	556.02	40.4243465	-104.8315080	9.00
7220.00	58.87	270.11	7058.34	-474.83	-5.46	474.82	40.4243469	-104.8317996	9.00
7320.00	67.87	270.12	7103.11	-385.53	-5.29	385.52	40.4243474	-104.8321203	9.00
7420.00	76.87	270.12	7133.37	-290.32	-5.09	290.31	40.4243480	-104.8324623	9.00
7520.00	85.87	270.13	7148.35	-191.56	-4.87	191.55	40.4243486	-104.8328170	9.00
7567.66	90.16	270.13	7150.00	-143.94	-4.76	143.93	40.4243489	-104.8329881	9.00
7620.00	90.16	270.13	7149.85	-91.60	-4.63	91.59	40.4243492	-104.8331760	0.00
7720.00	90.16	270.13	7149.57	8.40	-4.40	-8.41	40.4243499	-104.8335352	0.00

GREELEY-ROTHER_FEDERAL_13C-2-L_PWP__REV-A.0_.las

7820.00	90.16	270.13	7149.29	108.40	-4.17	-108.41	40.4243505	-104.8338944	0.00
7920.00	90.16	270.13	7149.00	208.40	-3.94	-208.41	40.4243511	-104.8342535	0.00
8020.00	90.16	270.13	7148.72	308.40	-3.70	-308.41	40.4243518	-104.8346127	0.00
8120.00	90.16	270.13	7148.44	408.40	-3.47	-408.41	40.4243524	-104.8349719	0.00
8220.00	90.16	270.13	7148.16	508.40	-3.24	-508.41	40.4243530	-104.8353310	0.00
8320.00	90.16	270.13	7147.87	608.40	-3.00	-608.41	40.4243537	-104.8356902	0.00
8420.00	90.16	270.13	7147.59	708.40	-2.77	-708.41	40.4243543	-104.8360494	0.00
8520.00	90.16	270.13	7147.31	808.40	-2.54	-808.41	40.4243549	-104.8364085	0.00
8620.00	90.16	270.13	7147.03	908.40	-2.30	-908.41	40.4243556	-104.8367677	0.00
8720.00	90.16	270.13	7146.74	1008.40	-2.07	-1008.41	40.4243562	-104.8371269	0.00
8820.00	90.16	270.13	7146.46	1108.40	-1.84	-1108.40	40.4243568	-104.8374860	0.00
8920.00	90.16	270.13	7146.18	1208.40	-1.61	-1208.40	40.4243575	-104.8378452	0.00
9020.00	90.16	270.13	7145.90	1308.40	-1.37	-1308.40	40.4243581	-104.8382044	0.00
9120.00	90.16	270.13	7145.61	1408.40	-1.14	-1408.40	40.4243587	-104.8385635	0.00
9220.00	90.16	270.13	7145.33	1508.40	-0.91	-1508.40	40.4243593	-104.8389227	0.00
9320.00	90.16	270.13	7145.05	1608.40	-0.67	-1608.40	40.4243599	-104.8392819	0.00
9420.00	90.16	270.13	7144.77	1708.40	-0.44	-1708.40	40.4243606	-104.8396410	0.00
9520.00	90.16	270.13	7144.48	1808.40	-0.21	-1808.40	40.4243612	-104.8400002	0.00
9620.00	90.16	270.13	7144.20	1908.40	0.02	-1908.40	40.4243618	-104.8403594	0.00
9720.00	90.16	270.13	7143.92	2008.40	0.26	-2008.40	40.4243624	-104.8407185	0.00
9820.00	90.16	270.13	7143.64	2108.40	0.49	-2108.40	40.4243630	-104.8410777	0.00
9920.00	90.16	270.13	7143.35	2208.39	0.72	-2208.40	40.4243637	-104.8414368	0.00
10020.00	90.16	270.13	7143.07	2308.39	0.96	-2308.40	40.4243643	-104.8417960	0.00
10120.00	90.16	270.13	7142.79	2408.39	1.19	-2408.40	40.4243649	-104.8421552	0.00
10220.00	90.16	270.13	7142.51	2508.39	1.42	-2508.40	40.4243655	-104.8425143	0.00
10320.00	90.16	270.13	7142.22	2608.39	1.65	-2608.39	40.4243661	-104.8428735	0.00
10420.00	90.16	270.13	7141.94	2708.39	1.89	-2708.39	40.4243667	-104.8432327	0.00
10520.00	90.16	270.13	7141.66	2808.39	2.12	-2808.39	40.4243673	-104.8435918	0.00
10620.00	90.16	270.13	7141.38	2908.39	2.35	-2908.39	40.4243679	-104.8439510	0.00
10720.00	90.16	270.13	7141.09	3008.39	2.59	-3008.39	40.4243685	-104.8443102	0.00
10820.00	90.16	270.13	7140.81	3108.39	2.82	-3108.39	40.4243691	-104.8446693	0.00
10920.00	90.16	270.13	7140.53	3208.39	3.05	-3208.39	40.4243698	-104.8450285	0.00
11020.00	90.16	270.13	7140.24	3308.39	3.29	-3308.39	40.4243704	-104.8453877	0.00
11120.00	90.16	270.13	7139.96	3408.39	3.52	-3408.39	40.4243710	-104.8457468	0.00

GREELEY-ROTHE_FEDERAL_13C-2-L_PWP__REV-A.0_.las

11220.00	90.16	270.13	7139.68	3508.39	3.75	-3508.39	40.4243716	-104.8461060	0.00
11320.00	90.16	270.13	7139.40	3608.39	3.98	-3608.39	40.4243722	-104.8464652	0.00
11420.00	90.16	270.13	7139.11	3708.39	4.22	-3708.39	40.4243728	-104.8468243	0.00
11520.00	90.16	270.13	7138.83	3808.39	4.45	-3808.39	40.4243734	-104.8471835	0.00
11620.00	90.16	270.13	7138.55	3908.39	4.68	-3908.39	40.4243739	-104.8475427	0.00
11720.00	90.16	270.13	7138.27	4008.39	4.92	-4008.39	40.4243745	-104.8479018	0.00
11820.00	90.16	270.13	7137.98	4108.39	5.15	-4108.38	40.4243751	-104.8482610	0.00
11920.00	90.16	270.13	7137.70	4208.39	5.38	-4208.38	40.4243757	-104.8486202	0.00
12020.00	90.16	270.13	7137.42	4308.39	5.61	-4308.38	40.4243763	-104.8489793	0.00
12120.00	90.16	270.13	7137.14	4408.39	5.85	-4408.38	40.4243769	-104.8493385	0.00
12220.00	90.16	270.13	7136.85	4508.39	6.08	-4508.38	40.4243775	-104.8496976	0.00
12320.00	90.16	270.13	7136.57	4608.38	6.31	-4608.38	40.4243781	-104.8500568	0.00
12420.00	90.16	270.13	7136.29	4708.38	6.55	-4708.38	40.4243787	-104.8504160	0.00
12520.00	90.16	270.13	7136.01	4808.38	6.78	-4808.38	40.4243793	-104.8507751	0.00
12620.00	90.16	270.13	7135.72	4908.38	7.01	-4908.38	40.4243799	-104.8511343	0.00
12720.00	90.16	270.13	7135.44	5008.38	7.25	-5008.38	40.4243804	-104.8514935	0.00
12820.00	90.16	270.13	7135.16	5108.38	7.48	-5108.38	40.4243810	-104.8518526	0.00
12920.00	90.16	270.13	7134.88	5208.38	7.71	-5208.38	40.4243816	-104.8522118	0.00
13020.00	90.16	270.13	7134.59	5308.38	7.94	-5308.38	40.4243822	-104.8525710	0.00
13120.00	90.16	270.13	7134.31	5408.38	8.18	-5408.38	40.4243828	-104.8529301	0.00
13220.00	90.16	270.13	7134.03	5508.38	8.41	-5508.38	40.4243833	-104.8532893	0.00
13320.00	90.16	270.13	7133.75	5608.38	8.64	-5608.37	40.4243839	-104.8536485	0.00
13420.00	90.16	270.13	7133.46	5708.38	8.88	-5708.37	40.4243845	-104.8540076	0.00
13520.00	90.16	270.13	7133.18	5808.38	9.11	-5808.37	40.4243851	-104.8543668	0.00
13620.00	90.16	270.13	7132.90	5908.38	9.34	-5908.37	40.4243856	-104.8547260	0.00
13720.00	90.16	270.13	7132.62	6008.38	9.57	-6008.37	40.4243862	-104.8550851	0.00
13820.00	90.16	270.13	7132.33	6108.38	9.81	-6108.37	40.4243868	-104.8554443	0.00
13920.00	90.16	270.13	7132.05	6208.38	10.04	-6208.37	40.4243874	-104.8558035	0.00
14020.00	90.16	270.13	7131.77	6308.38	10.27	-6308.37	40.4243879	-104.8561626	0.00
14120.00	90.16	270.13	7131.49	6408.38	10.51	-6408.37	40.4243885	-104.8565218	0.00
14220.00	90.16	270.13	7131.20	6508.38	10.74	-6508.37	40.4243891	-104.8568810	0.00
14320.00	90.16	270.13	7130.92	6608.38	10.97	-6608.37	40.4243896	-104.8572401	0.00
14420.00	90.16	270.13	7130.64	6708.38	11.20	-6708.37	40.4243902	-104.8575993	0.00
14520.00	90.16	270.13	7130.36	6808.38	11.44	-6808.37	40.4243908	-104.8579585	0.00

GREELEY-ROTHE_FEDERAL_13C-2-L_PWP__REV-A.0_.las

14620.00	90.16	270.13	7130.07	6908.38	11.67	-6908.37	40.4243913	-104.8583176	0.00
14720.00	90.16	270.13	7129.79	7008.38	11.90	-7008.37	40.4243919	-104.8586768	0.00
14820.00	90.16	270.13	7129.51	7108.37	12.14	-7108.36	40.4243924	-104.8590360	0.00
14920.00	90.16	270.13	7129.23	7208.37	12.37	-7208.36	40.4243930	-104.8593951	0.00
15020.00	90.16	270.13	7128.94	7308.37	12.60	-7308.36	40.4243936	-104.8597543	0.00
15120.00	90.16	270.13	7128.66	7408.37	12.84	-7408.36	40.4243941	-104.8601134	0.00
15220.00	90.16	270.13	7128.38	7508.37	13.07	-7508.36	40.4243947	-104.8604726	0.00
15320.00	90.16	270.13	7128.09	7608.37	13.30	-7608.36	40.4243952	-104.8608318	0.00
15420.00	90.16	270.13	7127.81	7708.37	13.53	-7708.36	40.4243958	-104.8611909	0.00
15520.00	90.16	270.13	7127.53	7808.37	13.77	-7808.36	40.4243963	-104.8615501	0.00
15620.00	90.16	270.13	7127.25	7908.37	14.00	-7908.36	40.4243969	-104.8619093	0.00
15720.00	90.16	270.13	7126.96	8008.37	14.23	-8008.36	40.4243974	-104.8622684	0.00
15820.00	90.16	270.13	7126.68	8108.37	14.47	-8108.36	40.4243980	-104.8626276	0.00
15920.00	90.16	270.13	7126.40	8208.37	14.70	-8208.36	40.4243985	-104.8629868	0.00
16020.00	90.16	270.13	7126.12	8308.37	14.93	-8308.36	40.4243991	-104.8633459	0.00
16120.00	90.16	270.13	7125.83	8408.37	15.16	-8408.36	40.4243996	-104.8637051	0.00
16220.00	90.16	270.13	7125.55	8508.37	15.40	-8508.36	40.4244002	-104.8640643	0.00
16320.00	90.16	270.13	7125.27	8608.37	15.63	-8608.35	40.4244007	-104.8644234	0.00
16420.00	90.16	270.13	7124.99	8708.37	15.86	-8708.35	40.4244013	-104.8647826	0.00
16520.00	90.16	270.13	7124.70	8808.37	16.10	-8808.35	40.4244018	-104.8651418	0.00
16620.00	90.16	270.13	7124.42	8908.37	16.33	-8908.35	40.4244024	-104.8655009	0.00
16720.00	90.16	270.13	7124.14	9008.37	16.56	-9008.35	40.4244029	-104.8658601	0.00
16820.00	90.16	270.13	7123.86	9108.37	16.80	-9108.35	40.4244034	-104.8662193	0.00
16920.00	90.16	270.13	7123.57	9208.37	17.03	-9208.35	40.4244040	-104.8665784	0.00
17020.00	90.16	270.13	7123.29	9308.37	17.26	-9308.35	40.4244045	-104.8669376	0.00
17120.00	90.16	270.13	7123.01	9408.37	17.49	-9408.35	40.4244050	-104.8672968	0.00
17220.00	90.16	270.13	7122.73	9508.36	17.73	-9508.35	40.4244056	-104.8676559	0.00
17320.00	90.16	270.13	7122.44	9608.36	17.96	-9608.35	40.4244061	-104.8680151	0.00
17420.00	90.16	270.13	7122.16	9708.36	18.19	-9708.35	40.4244066	-104.8683743	0.00
17476.97	90.16	270.13	7122.00	9765.34	18.33	-9765.32	40.4244069	-104.8685789	0.00



Planned Wellpath Report

GREELEY-ROTHER FEDERAL 13C-2-L PWP (REV-A.0)

Page 1 of 9



REFERENCE WELLPATH IDENTIFICATION

Operator	SRC ENERGY	Slot	SLOT#20 GREELEY-ROTHER FEDERAL 13C-2-L (1023'FSL & 294'FEL, SEC.01)
Area	COLORADO	Well	GREELEY-ROTHER FEDERAL 13C-2-L
Field	WELD COUNTY (NAD83,TRUE NORTH)	Wellbore	GREELEY-ROTHER FEDERAL 13C-2-L PWB
Facility	SEC.01-T05N-R67W		

REPORT SETUP INFORMATION

Projection System	NAD83 / Lambert Colorado SP, Northern Zone (501), US feet	Software System	WellArchitect® 5.0
North Reference	True	User	Doddanna
Scale	0.999961	Report Generated	10/4/2017 at 2:37:04 PM
Convergence at slot	0.43° East	Database/Source file	WellArchitectDB/GREELEY-ROTHER FEDERAL 13C-2-L PWP__REV-A.0_.xml

WELLPATH LOCATION

	Local coordinates		Grid coordinates		Geographic coordinates	
	North[ft]	East[ft]	Easting[US ft]	Northing[US ft]	Latitude	Longitude
Slot Location	-1344.72	1.70	3185557.31	1398132.74	40°25'27.703"N	104°50'00.618"W
Facility Reference Pt			3185545.50	1399477.36	40°25'40.991"N	104°50'00.640"W
Field Reference Pt			3171284.48	1426358.81	40°30'07.643"N	104°53'02.634"W

WELLPATH DATUM

Calculation method	Minimum curvature	PRECISION 462 (20') (RKB) to Facility Vertical Datum	4892.00ft
Horizontal Reference Pt	Slot	PRECISION 462 (20') (RKB) to Mean Sea Level	4892.00ft
Vertical Reference Pt	PRECISION 462 (20') (RKB)	PRECISION 462 (20') (RKB) to Mud Line at Slot (SLOT#20 GREELEY-ROTHER FEDERAL 13C-2-L (1023'FSL & 294'FEL, SEC.01))	4892.00ft
MD Reference Pt	PRECISION 462 (20') (RKB)	Section Origin	N 0.00, E 0.00 ft
Field Vertical Reference	Mean Sea Level	Section Azimuth	270.11°



Planned Wellpath Report

GREELEY-ROTHE FEDERAL 13C-2-L PWP (REV-A.0)

Page 2 of 9



REFERENCE WELLPATH IDENTIFICATION			
Operator	SRC ENERGY	Slot	SLOT#20 GREELEY-ROTHE FEDERAL 13C-2-L (1023'FSL & 294'FEL, SEC.01)
Area	COLORADO	Well	GREELEY-ROTHE FEDERAL 13C-2-L
Field	WELD COUNTY (NAD83,TRUE NORTH)	Wellbore	GREELEY-ROTHE FEDERAL 13C-2-L PWB
Facility	SEC.01-T05N-R67W		

WELLPATH DATA (181 stations) † = interpolated/extrapolated station

MD [ft]	Inclination [°]	Azimuth [°]	TVD [ft]	Vert Sect [ft]	North [ft]	East [ft]	DLS [°/100ft]	Comments
0.00†	0.000	90.423	0.00	0.00	0.00	0.00	0.00	
20.00	0.000	90.423	20.00	0.00	0.00	0.00	0.00	Tie On
120.00†	0.000	90.423	120.00	0.00	0.00	0.00	0.00	
220.00†	0.000	90.423	220.00	0.00	0.00	0.00	0.00	
320.00†	0.000	90.423	320.00	0.00	0.00	0.00	0.00	
420.00†	0.000	90.423	420.00	0.00	0.00	0.00	0.00	
520.00†	0.000	90.423	520.00	0.00	0.00	0.00	0.00	
550.00	0.000	90.423	550.00	0.00	0.00	0.00	0.00	End of Tangent
620.00†	1.400	90.423	619.99	-0.86	-0.01	0.86	2.00	
720.00†	3.400	90.423	719.90	-5.04	-0.04	5.04	2.00	
820.00†	5.400	90.423	819.60	-12.71	-0.09	12.71	2.00	
920.00†	7.400	90.423	918.97	-23.86	-0.18	23.86	2.00	
939.07	7.781	90.423	937.87	-26.38	-0.19	26.38	2.00	End of Build
1020.00†	7.781	90.423	1018.06	-37.34	-0.28	37.34	0.00	
1120.00†	7.781	90.423	1117.14	-50.88	-0.38	50.87	0.00	
1220.00†	7.781	90.423	1216.22	-64.41	-0.48	64.41	0.00	
1320.00†	7.781	90.423	1315.30	-77.95	-0.58	77.95	0.00	
1420.00†	7.781	90.423	1414.38	-91.49	-0.68	91.49	0.00	
1520.00†	7.781	90.423	1513.46	-105.03	-0.77	105.03	0.00	
1620.00†	7.781	90.423	1612.53	-118.57	-0.87	118.57	0.00	
1720.00†	7.781	90.423	1711.61	-132.11	-0.97	132.11	0.00	
1820.00†	7.781	90.423	1810.69	-145.65	-1.07	145.65	0.00	
1920.00†	7.781	90.423	1909.77	-159.19	-1.17	159.19	0.00	
2020.00†	7.781	90.423	2008.85	-172.73	-1.27	172.73	0.00	
2120.00†	7.781	90.423	2107.93	-186.27	-1.37	186.26	0.00	
2220.00†	7.781	90.423	2207.01	-199.81	-1.47	199.80	0.00	
2320.00†	7.781	90.423	2306.09	-213.35	-1.57	213.34	0.00	
2420.00†	7.781	90.423	2405.17	-226.88	-1.67	226.88	0.00	
2520.00†	7.781	90.423	2504.25	-240.42	-1.77	240.42	0.00	
2620.00†	7.781	90.423	2603.33	-253.96	-1.87	253.96	0.00	



Planned Wellpath Report

GREELEY-ROTHE FEDERAL 13C-2-L PWP (REV-A.0)

Page 3 of 9



REFERENCE WELLPATH IDENTIFICATION			
Operator	SRC ENERGY	Slot	SLOT#20 GREELEY-ROTHE FEDERAL 13C-2-L (1023'FSL & 294'FEL, SEC.01)
Area	COLORADO	Well	GREELEY-ROTHE FEDERAL 13C-2-L
Field	WELD COUNTY (NAD83,TRUE NORTH)	Wellbore	GREELEY-ROTHE FEDERAL 13C-2-L PWB
Facility	SEC.01-T05N-R67W		

WELLPATH DATA (181 stations) † = interpolated/extrapolated station								
MD [ft]	Inclination [°]	Azimuth [°]	TVD [ft]	Vert Sect [ft]	North [ft]	East [ft]	DLS [°/100ft]	Comments
2720.00†	7.781	90.423	2702.41	-267.50	-1.97	267.50	0.00	
2820.00†	7.781	90.423	2801.49	-281.04	-2.07	281.04	0.00	
2920.00†	7.781	90.423	2900.56	-294.58	-2.17	294.58	0.00	
3020.00†	7.781	90.423	2999.64	-308.12	-2.27	308.12	0.00	
3120.00†	7.781	90.423	3098.72	-321.66	-2.37	321.66	0.00	
3220.00†	7.781	90.423	3197.80	-335.20	-2.47	335.19	0.00	
3320.00†	7.781	90.423	3296.88	-348.74	-2.57	348.73	0.00	
3420.00†	7.781	90.423	3395.96	-362.28	-2.67	362.27	0.00	
3520.00†	7.781	90.423	3495.04	-375.82	-2.77	375.81	0.00	
3620.00†	7.781	90.423	3594.12	-389.35	-2.87	389.35	0.00	
3720.00†	7.781	90.423	3693.20	-402.89	-2.97	402.89	0.00	
3820.00†	7.781	90.423	3792.28	-416.43	-3.07	416.43	0.00	
3920.00†	7.781	90.423	3891.36	-429.97	-3.17	429.97	0.00	
4020.00†	7.781	90.423	3990.44	-443.51	-3.27	443.51	0.00	
4120.00†	7.781	90.423	4089.51	-457.05	-3.37	457.05	0.00	
4220.00†	7.781	90.423	4188.59	-470.59	-3.47	470.58	0.00	
4320.00†	7.781	90.423	4287.67	-484.13	-3.57	484.12	0.00	
4420.00†	7.781	90.423	4386.75	-497.67	-3.67	497.66	0.00	
4520.00†	7.781	90.423	4485.83	-511.21	-3.77	511.20	0.00	
4620.00†	7.781	90.423	4584.91	-524.75	-3.87	524.74	0.00	
4720.00†	7.781	90.423	4683.99	-538.29	-3.97	538.28	0.00	
4820.00†	7.781	90.423	4783.07	-551.82	-4.07	551.82	0.00	
4920.00†	7.781	90.423	4882.15	-565.36	-4.17	565.36	0.00	
5020.00†	7.781	90.423	4981.23	-578.90	-4.27	578.90	0.00	
5120.00†	7.781	90.423	5080.31	-592.44	-4.37	592.44	0.00	
5220.00†	7.781	90.423	5179.39	-605.98	-4.47	605.97	0.00	
5320.00†	7.781	90.423	5278.46	-619.52	-4.57	619.51	0.00	
5420.00†	7.781	90.423	5377.54	-633.06	-4.67	633.05	0.00	
5520.00†	7.781	90.423	5476.62	-646.60	-4.77	646.59	0.00	
5620.00†	7.781	90.423	5575.70	-660.14	-4.87	660.13	0.00	



Planned Wellpath Report

GREELEY-ROTHE FEDERAL 13C-2-L PWP (REV-A.0)

Page 4 of 9



REFERENCE WELLPATH IDENTIFICATION			
Operator	SRC ENERGY	Slot	SLOT#20 GREELEY-ROTHE FEDERAL 13C-2-L (1023'FSL & 294'FEL, SEC.01)
Area	COLORADO	Well	GREELEY-ROTHE FEDERAL 13C-2-L
Field	WELD COUNTY (NAD83,TRUE NORTH)	Wellbore	GREELEY-ROTHE FEDERAL 13C-2-L PWB
Facility	SEC.01-T05N-R67W		

WELLPATH DATA (181 stations) † = interpolated/extrapolated station								
MD [ft]	Inclination [°]	Azimuth [°]	TVD [ft]	Vert Sect [ft]	North [ft]	East [ft]	DLS [°/100ft]	Comments
5720.00†	7.781	90.423	5674.78	-673.68	-4.97	673.67	0.00	
5820.00†	7.781	90.423	5773.86	-687.22	-5.07	687.21	0.00	
5920.00†	7.781	90.423	5872.94	-700.76	-5.17	700.75	0.00	
6020.00†	7.781	90.423	5972.02	-714.29	-5.27	714.29	0.00	
6120.00†	7.781	90.423	6071.10	-727.83	-5.37	727.83	0.00	
6220.00†	7.781	90.423	6170.18	-741.37	-5.47	741.36	0.00	
6320.00†	7.781	90.423	6269.26	-754.91	-5.57	754.90	0.00	
6420.00†	7.781	90.423	6368.34	-768.45	-5.67	768.44	0.00	
6479.40	7.781	90.423	6427.19	-776.49	-5.73	776.48	0.00	End of Tangent
6520.00†	4.128	90.681	6467.56	-780.70	-5.77	780.70	9.00	
6620.00†	4.873	269.669	6567.46	-780.06	-5.83	780.05	9.00	
6720.00†	13.873	269.973	6666.02	-763.79	-5.86	763.78	9.00	
6820.00†	22.873	270.040	6760.83	-732.30	-5.86	732.29	9.00	
6920.00†	31.873	270.070	6849.54	-686.37	-5.81	686.36	9.00	
7020.00†	40.873	270.088	6929.97	-627.13	-5.73	627.12	9.00	
7120.00†	49.873	270.100	7000.15	-556.03	-5.61	556.02	9.00	
7220.00†	58.873	270.109	7058.34	-474.83	-5.46	474.82	9.00	
7320.00†	67.873	270.117	7103.11	-385.53	-5.29	385.52	9.00	
7420.00†	76.873	270.124	7133.37	-290.32	-5.09	290.31	9.00	
7520.00†	85.873	270.130	7148.35	-191.56	-4.87	191.55	9.00	
7567.66	90.162	270.133	7150.00†	-143.94	-4.76	143.93	9.00	End of 3D Arc
7620.00†	90.162	270.133	7149.85	-91.60	-4.63	91.59	0.00	
7720.00†	90.162	270.133	7149.57	8.40	-4.40	-8.41	0.00	
7820.00†	90.162	270.133	7149.29	108.40	-4.17	-108.41	0.00	
7920.00†	90.162	270.133	7149.00	208.40	-3.94	-208.41	0.00	
8020.00†	90.162	270.133	7148.72	308.40	-3.70	-308.41	0.00	
8120.00†	90.162	270.133	7148.44	408.40	-3.47	-408.41	0.00	
8220.00†	90.162	270.133	7148.16	508.40	-3.24	-508.41	0.00	
8320.00†	90.162	270.133	7147.87	608.40	-3.00	-608.41	0.00	
8420.00†	90.162	270.133	7147.59	708.40	-2.77	-708.41	0.00	



Planned Wellpath Report

GREELEY-ROTHE FEDERAL 13C-2-L PWP (REV-A.0)

Page 5 of 9



REFERENCE WELLPATH IDENTIFICATION			
Operator	SRC ENERGY	Slot	SLOT#20 GREELEY-ROTHE FEDERAL 13C-2-L (1023'FSL & 294'FEL, SEC.01)
Area	COLORADO	Well	GREELEY-ROTHE FEDERAL 13C-2-L
Field	WELD COUNTY (NAD83,TRUE NORTH)	Wellbore	GREELEY-ROTHE FEDERAL 13C-2-L PWB
Facility	SEC.01-T05N-R67W		

WELLPATH DATA (181 stations) † = interpolated/extrapolated station								
MD [ft]	Inclination [°]	Azimuth [°]	TVD [ft]	Vert Sect [ft]	North [ft]	East [ft]	DLS [°/100ft]	Comments
8520.00†	90.162	270.133	7147.31	808.40	-2.54	-808.41	0.00	
8620.00†	90.162	270.133	7147.03	908.40	-2.30	-908.41	0.00	
8720.00†	90.162	270.133	7146.74	1008.40	-2.07	-1008.41	0.00	
8820.00†	90.162	270.133	7146.46	1108.40	-1.84	-1108.40	0.00	
8920.00†	90.162	270.133	7146.18	1208.40	-1.61	-1208.40	0.00	
9020.00†	90.162	270.133	7145.90	1308.40	-1.37	-1308.40	0.00	
9120.00†	90.162	270.133	7145.61	1408.40	-1.14	-1408.40	0.00	
9220.00†	90.162	270.133	7145.33	1508.40	-0.91	-1508.40	0.00	
9320.00†	90.162	270.133	7145.05	1608.40	-0.67	-1608.40	0.00	
9420.00†	90.162	270.133	7144.77	1708.40	-0.44	-1708.40	0.00	
9520.00†	90.162	270.133	7144.48	1808.40	-0.21	-1808.40	0.00	
9620.00†	90.162	270.133	7144.20	1908.40	0.02	-1908.40	0.00	
9720.00†	90.162	270.133	7143.92	2008.40	0.26	-2008.40	0.00	
9820.00†	90.162	270.133	7143.64	2108.40	0.49	-2108.40	0.00	
9920.00†	90.162	270.133	7143.35	2208.39	0.72	-2208.40	0.00	
10020.00†	90.162	270.133	7143.07	2308.39	0.96	-2308.40	0.00	
10120.00†	90.162	270.133	7142.79	2408.39	1.19	-2408.40	0.00	
10220.00†	90.162	270.133	7142.51	2508.39	1.42	-2508.40	0.00	
10320.00†	90.162	270.133	7142.22	2608.39	1.65	-2608.39	0.00	
10420.00†	90.162	270.133	7141.94	2708.39	1.89	-2708.39	0.00	
10520.00†	90.162	270.133	7141.66	2808.39	2.12	-2808.39	0.00	
10620.00†	90.162	270.133	7141.38	2908.39	2.35	-2908.39	0.00	
10720.00†	90.162	270.133	7141.09	3008.39	2.59	-3008.39	0.00	
10820.00†	90.162	270.133	7140.81	3108.39	2.82	-3108.39	0.00	
10920.00†	90.162	270.133	7140.53	3208.39	3.05	-3208.39	0.00	
11020.00†	90.162	270.133	7140.24	3308.39	3.29	-3308.39	0.00	
11120.00†	90.162	270.133	7139.96	3408.39	3.52	-3408.39	0.00	
11220.00†	90.162	270.133	7139.68	3508.39	3.75	-3508.39	0.00	
11320.00†	90.162	270.133	7139.40	3608.39	3.98	-3608.39	0.00	
11420.00†	90.162	270.133	7139.11	3708.39	4.22	-3708.39	0.00	



Planned Wellpath Report

GREELEY-ROTHE FEDERAL 13C-2-L PWP (REV-A.0)

Page 6 of 9



REFERENCE WELLPATH IDENTIFICATION			
Operator	SRC ENERGY	Slot	SLOT#20 GREELEY-ROTHE FEDERAL 13C-2-L (1023'FSL & 294'FEL, SEC.01)
Area	COLORADO	Well	GREELEY-ROTHE FEDERAL 13C-2-L
Field	WELD COUNTY (NAD83,TRUE NORTH)	Wellbore	GREELEY-ROTHE FEDERAL 13C-2-L PWB
Facility	SEC.01-T05N-R67W		

WELLPATH DATA (181 stations) † = interpolated/extrapolated station								
MD [ft]	Inclination [°]	Azimuth [°]	TVD [ft]	Vert Sect [ft]	North [ft]	East [ft]	DLS [°/100ft]	Comments
11520.00†	90.162	270.133	7138.83	3808.39	4.45	-3808.39	0.00	
11620.00†	90.162	270.133	7138.55	3908.39	4.68	-3908.39	0.00	
11720.00†	90.162	270.133	7138.27	4008.39	4.92	-4008.39	0.00	
11820.00†	90.162	270.133	7137.98	4108.39	5.15	-4108.38	0.00	
11920.00†	90.162	270.133	7137.70	4208.39	5.38	-4208.38	0.00	
12020.00†	90.162	270.133	7137.42	4308.39	5.61	-4308.38	0.00	
12120.00†	90.162	270.133	7137.14	4408.39	5.85	-4408.38	0.00	
12220.00†	90.162	270.133	7136.85	4508.39	6.08	-4508.38	0.00	
12320.00†	90.162	270.133	7136.57	4608.38	6.31	-4608.38	0.00	
12420.00†	90.162	270.133	7136.29	4708.38	6.55	-4708.38	0.00	
12520.00†	90.162	270.133	7136.01	4808.38	6.78	-4808.38	0.00	
12620.00†	90.162	270.133	7135.72	4908.38	7.01	-4908.38	0.00	
12720.00†	90.162	270.133	7135.44	5008.38	7.25	-5008.38	0.00	
12820.00†	90.162	270.133	7135.16	5108.38	7.48	-5108.38	0.00	
12920.00†	90.162	270.133	7134.88	5208.38	7.71	-5208.38	0.00	
13020.00†	90.162	270.133	7134.59	5308.38	7.94	-5308.38	0.00	
13120.00†	90.162	270.133	7134.31	5408.38	8.18	-5408.38	0.00	
13220.00†	90.162	270.133	7134.03	5508.38	8.41	-5508.38	0.00	
13320.00†	90.162	270.133	7133.75	5608.38	8.64	-5608.37	0.00	
13420.00†	90.162	270.133	7133.46	5708.38	8.88	-5708.37	0.00	
13520.00†	90.162	270.133	7133.18	5808.38	9.11	-5808.37	0.00	
13620.00†	90.162	270.133	7132.90	5908.38	9.34	-5908.37	0.00	
13720.00†	90.162	270.133	7132.62	6008.38	9.57	-6008.37	0.00	
13820.00†	90.162	270.133	7132.33	6108.38	9.81	-6108.37	0.00	
13920.00†	90.162	270.133	7132.05	6208.38	10.04	-6208.37	0.00	
14020.00†	90.162	270.133	7131.77	6308.38	10.27	-6308.37	0.00	
14120.00†	90.162	270.133	7131.49	6408.38	10.51	-6408.37	0.00	
14220.00†	90.162	270.133	7131.20	6508.38	10.74	-6508.37	0.00	
14320.00†	90.162	270.133	7130.92	6608.38	10.97	-6608.37	0.00	
14420.00†	90.162	270.133	7130.64	6708.38	11.20	-6708.37	0.00	



Planned Wellpath Report

GREELEY-ROTHE FEDERAL 13C-2-L PWP (REV-A.0)

Page 7 of 9



REFERENCE WELLPATH IDENTIFICATION			
Operator	SRC ENERGY	Slot	SLOT#20 GREELEY-ROTHE FEDERAL 13C-2-L (1023'FSL & 294'FEL, SEC.01)
Area	COLORADO	Well	GREELEY-ROTHE FEDERAL 13C-2-L
Field	WELD COUNTY (NAD83,TRUE NORTH)	Wellbore	GREELEY-ROTHE FEDERAL 13C-2-L PWB
Facility	SEC.01-T05N-R67W		

WELLPATH DATA (181 stations) † = interpolated/extrapolated station								
MD [ft]	Inclination [°]	Azimuth [°]	TVD [ft]	Vert Sect [ft]	North [ft]	East [ft]	DLS [°/100ft]	Comments
14520.00†	90.162	270.133	7130.36	6808.38	11.44	-6808.37	0.00	
14620.00†	90.162	270.133	7130.07	6908.38	11.67	-6908.37	0.00	
14720.00†	90.162	270.133	7129.79	7008.38	11.90	-7008.37	0.00	
14820.00†	90.162	270.133	7129.51	7108.37	12.14	-7108.36	0.00	
14920.00†	90.162	270.133	7129.23	7208.37	12.37	-7208.36	0.00	
15020.00†	90.162	270.133	7128.94	7308.37	12.60	-7308.36	0.00	
15120.00†	90.162	270.133	7128.66	7408.37	12.84	-7408.36	0.00	
15220.00†	90.162	270.133	7128.38	7508.37	13.07	-7508.36	0.00	
15320.00†	90.162	270.133	7128.09	7608.37	13.30	-7608.36	0.00	
15420.00†	90.162	270.133	7127.81	7708.37	13.53	-7708.36	0.00	
15520.00†	90.162	270.133	7127.53	7808.37	13.77	-7808.36	0.00	
15620.00†	90.162	270.133	7127.25	7908.37	14.00	-7908.36	0.00	
15720.00†	90.162	270.133	7126.96	8008.37	14.23	-8008.36	0.00	
15820.00†	90.162	270.133	7126.68	8108.37	14.47	-8108.36	0.00	
15920.00†	90.162	270.133	7126.40	8208.37	14.70	-8208.36	0.00	
16020.00†	90.162	270.133	7126.12	8308.37	14.93	-8308.36	0.00	
16120.00†	90.162	270.133	7125.83	8408.37	15.16	-8408.36	0.00	
16220.00†	90.162	270.133	7125.55	8508.37	15.40	-8508.36	0.00	
16320.00†	90.162	270.133	7125.27	8608.37	15.63	-8608.35	0.00	
16420.00†	90.162	270.133	7124.99	8708.37	15.86	-8708.35	0.00	
16520.00†	90.162	270.133	7124.70	8808.37	16.10	-8808.35	0.00	
16620.00†	90.162	270.133	7124.42	8908.37	16.33	-8908.35	0.00	
16720.00†	90.162	270.133	7124.14	9008.37	16.56	-9008.35	0.00	
16820.00†	90.162	270.133	7123.86	9108.37	16.80	-9108.35	0.00	
16920.00†	90.162	270.133	7123.57	9208.37	17.03	-9208.35	0.00	
17020.00†	90.162	270.133	7123.29	9308.37	17.26	-9308.35	0.00	
17120.00†	90.162	270.133	7123.01	9408.37	17.49	-9408.35	0.00	
17220.00†	90.162	270.133	7122.73	9508.36	17.73	-9508.35	0.00	
17320.00†	90.162	270.133	7122.44	9608.36	17.96	-9608.35	0.00	
17420.00†	90.162	270.133	7122.16	9708.36	18.19	-9708.35	0.00	



Planned Wellpath Report

GREELEY-ROTHE FEDERAL 13C-2-L PWP (REV-A.0)

Page 8 of 9



REFERENCE WELLPATH IDENTIFICATION			
Operator	SRC ENERGY	Slot	SLOT#20 GREELEY-ROTHE FEDERAL 13C-2-L (1023'FSL & 294'FEL, SEC.01)
Area	COLORADO	Well	GREELEY-ROTHE FEDERAL 13C-2-L
Field	WELD COUNTY (NAD83,TRUE NORTH)	Wellbore	GREELEY-ROTHE FEDERAL 13C-2-L PWB
Facility	SEC.01-T05N-R67W		

WELLPATH DATA (181 stations)								
MD [ft]	Inclination [°]	Azimuth [°]	TVD [ft]	Vert Sect [ft]	North [ft]	East [ft]	DLS [°/100ft]	Comments
17476.97	90.162	270.133	7122.00 ²	9765.34	18.33	-9765.32	0.00	End of Tangent

HOLE & CASING SECTIONS									
- Ref Wellbore: GREELEY-ROTHE FEDERAL 13C-2-L PWB					Ref Wellpath: GREELEY-ROTHE FEDERAL 13C-2-L PWP (REV-A.0)				
String/Diameter	Start MD [ft]	End MD [ft]	Interval [ft]	Start TVD [ft]	End TVD [ft]	Start N/S [ft]	Start E/W [ft]	End N/S [ft]	End E/W [ft]
13.5in Open Hole	20.00	1750.00	1730.00	20.00	1741.34	0.00	0.00	-1.00	136.17
9.625in Casing Surface	20.00	1750.00	1730.00	20.00	1741.34	0.00	0.00	-1.00	136.17
8.5in Open Hole	1750.00	17476.97	15726.97	1741.34	7122.00	-1.00	136.17	18.33	-9765.32

TARGETS									
Name	MD [ft]	TVD [ft]	North [ft]	East [ft]	Grid East [US ft]	Grid North [US ft]	Latitude	Longitude	Shape
SEC.01-T05N-R67W		22.00	1344.72	-1.70	3185545.50	1399477.36	40°25'40.991"N	104°50'00.640"W	polygon
SEC.02-T05N-R67W		22.00	1344.72	-1.70	3185545.50	1399477.36	40°25'40.991"N	104°50'00.640"W	polygon
2) GREELEY ROTHE FEDERAL 13C-2-L BHL ON PLAT (1133'FSL & 150'FWL, SEC.02)	17476.97	7122.00	18.33	-9765.32	3175792.52	1398077.67	40°25'27.865"N	104°52'06.884"W	circle
1) GREELEY ROTHE FEDERAL 13C-2-L TOP OF PROD ON PLAT (1013'FSL & 150'FEL, SEC.01)	7567.66	7150.00	-4.76	143.93	3185701.26	1398129.06	40°25'27.656"N	104°49'58.757"W	circle



Planned Wellpath Report

GREELEY-ROTHER FEDERAL 13C-2-L PWP (REV-A.0)

Page 9 of 9



REFERENCE WELLPATH IDENTIFICATION			
Operator	SRC ENERGY	Slot	SLOT#20 GREELEY-ROTHER FEDERAL 13C-2-L (1023'FSL & 294'FEL, SEC.01)
Area	COLORADO	Well	GREELEY-ROTHER FEDERAL 13C-2-L
Field	WELD COUNTY (NAD83,TRUE NORTH)	Wellbore	GREELEY-ROTHER FEDERAL 13C-2-L PWB
Facility	SEC.01-T05N-R67W		

SURVEY PROGRAM - Ref Wellbore: GREELEY-ROTHER FEDERAL 13C-2-L PWB Ref Wellpath: GREELEY-ROTHER FEDERAL 13C-2-L PWP (REV-A.0)				
Start MD [ft]	End MD [ft]	Positional Uncertainty Model	Log Name/Comment	Wellbore
20.00	1750.00	Custom BHI NaviTrak (Standard Rotating+Axial Corr) (Rockies 0.03Gt model)		GREELEY-ROTHER FEDERAL 13C-2-L PWB
1750.00	17476.97	Custom BHI AutoTrak Curve (IFR1, Short) (Rockies 0.03Gt model)		GREELEY-ROTHER FEDERAL 13C-2-L PWB