

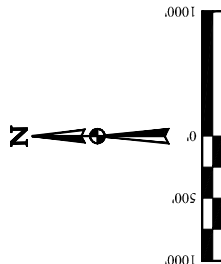
GREAT WESTERN OPERATING COMPANY

POSTLE IC 09-259HN
SW 1/4 NW 1/4, SECTION 11, T3N, R68W, 6th P.M.
WELD COUNTY, COLORADO

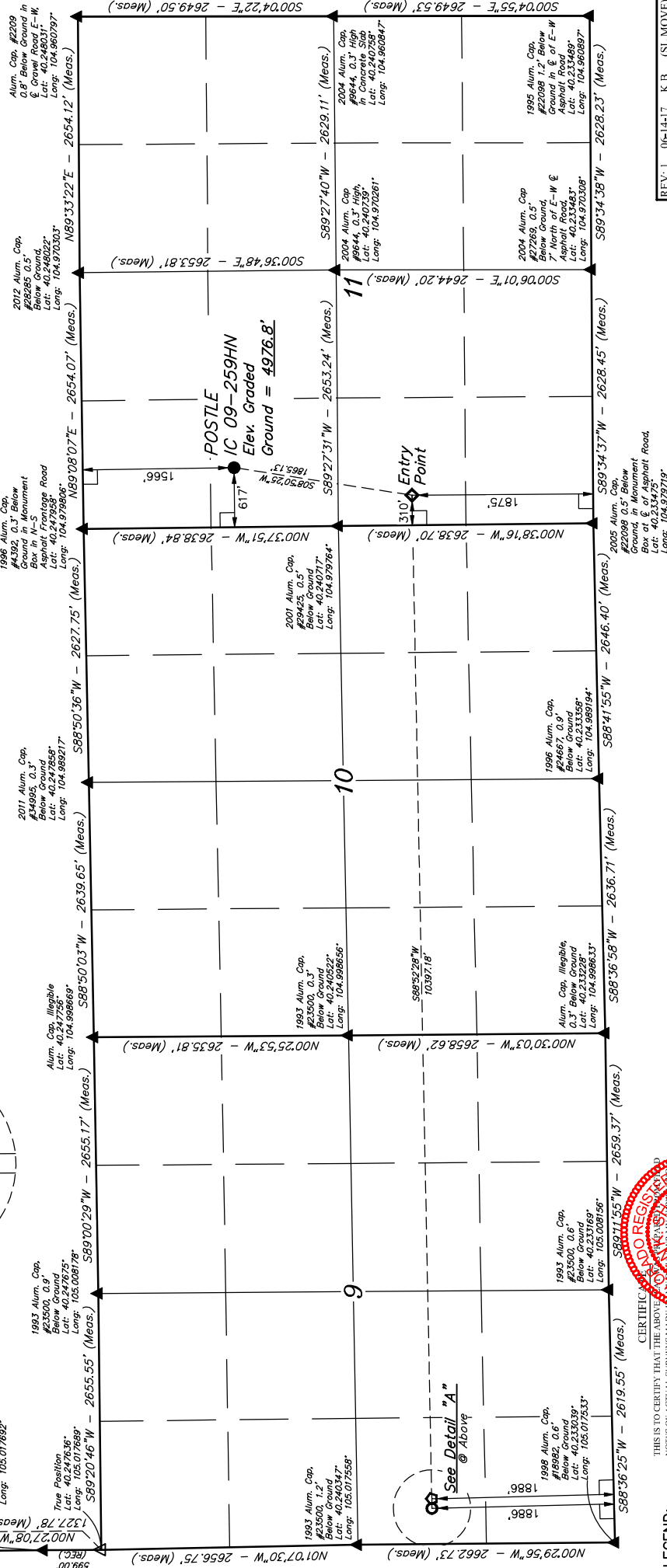
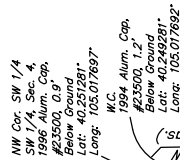
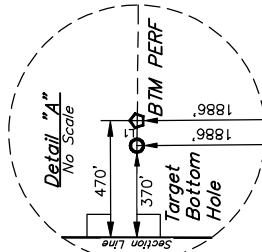
POSTLE IC 09-259HN

BASIS OF BEARINGS
BASIS OF BEARINGS IS A G.P.S. OBSERVATION
BASIS OF ELEVATION

BASIS OF ELEVATION
USGS COOPERATIVE BASE NETWORK CONTROL STATION,
DESIGNATION "VERMILYEA". NGS DATA SHEET LISTS THE
MVD 88 ELEVATION AS BEING 5026 FEET



LINE TABLE		
LINE	DIRECTION	LENGTH
L1	S88°52'28"W	100.01'



RECEIVED LAND SURVEYOR
REGISTRATION NO. 28285
STATE OF TEXAS

THIS IS TO CERTIFY THAT THE NOTICES OF ACTUAL SURVEY HAVE BEEN MADE TO THE ADJACENT OWNERS AND THAT THE SAME ARE TRUE AND CORRECT TO THE BEST OF MY KNOWLEDGE AND BELIEF.

LEGEND:

- = 90° SYMBOL
- = PROPOSED WELLHEAD.
- = TARGET BOTTOM HOLE.
- ◇ = ENTRY POINT.
- ◆ = BTM PERF.
- ▲ = SECTION CORNERS LOCATED. (NAD 83)
- △ = SECTION CORNERS RE-ESTABLISHED. (Not Set on Ground.) (NAD 83)

REV: 1 06-14-17 K.B. (SL MOVE)

PDOP = 1.3



UELS, LLC
Corporate Office * 85 South 200 East
Vernal UT 84078 * (435) 789-1017

[illegible]