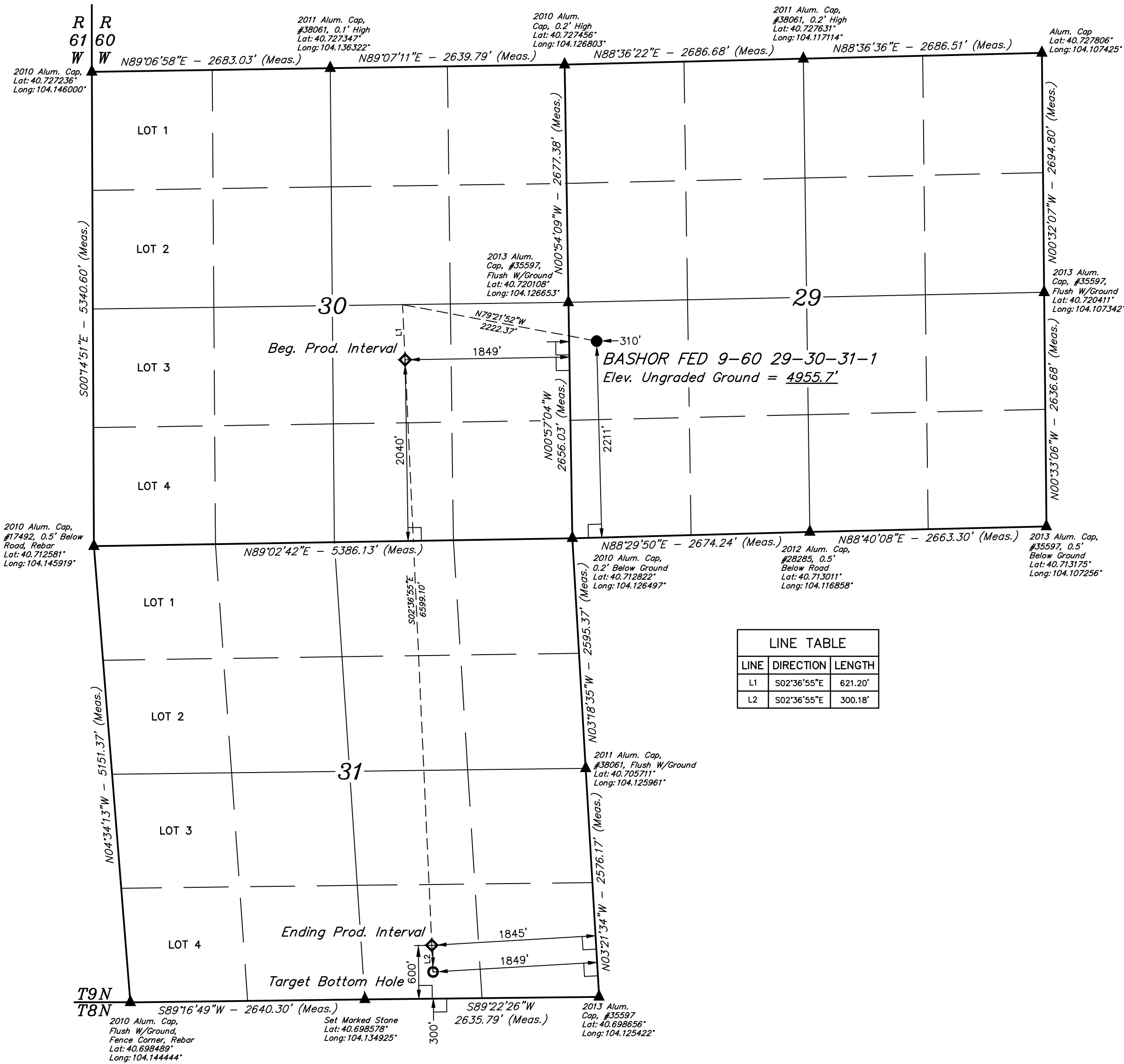


LEGEND:

- 90° SYMBOL
PROPOSED WELLHEAD.
PRODUCTION INTERVAL.
TARGET BOTTOM HOLE.
SECTION CORNERS LOCATED. (NAD 83)

T9N, R60W, 6th P.M.



LINE TABLE		
LINE	DIRECTION	LENGTH
L1	S02°36'55"E	621.20'
L2	S02°36'55"E	300.18'



PDOP = 1.2

SURFACE LOCATION 2211' FSL 310' FWL	BEG. PROD. INTERVAL 2040' FSL 1849' FEL	ENDING PROD. INTERVAL 600' FSL 1845' FEL	TARGET BOTTOM HOLE 300' FSL 1849' FEL
NAD 83 (SURFACE LOCATION) LATITUDE = 40°43'08.08" (40.718911) LONGITUDE = 104°07'31.83" (104.125508)	NAD 83 (BEG. PROD. INTERVAL) LATITUDE = 40°43'06.01" (40.718336) LONGITUDE = 104°07'59.83" (104.133286)	NAD 83 (ENDING PROD. INTERVAL) LATITUDE = 40°42'00.89" (40.700247) LONGITUDE = 104°07'55.95" (104.132208)	NAD 83 (TARGET BOTTOM HOLE) LATITUDE = 40°41'57.92" (40.699422) LONGITUDE = 104°07'55.77" (104.132158)
NAD 27 (SURFACE LOCATION) LATITUDE = 40°43'08.13" (40.718925) LONGITUDE = 104°07'30.02" (104.125006)	NAD 27 (BEG. PROD. INTERVAL) LATITUDE = 40°43'06.06" (40.718350) LONGITUDE = 104°07'58.01" (104.132781)	NAD 27 (ENDING PROD. INTERVAL) LATITUDE = 40°42'00.94" (40.700261) LONGITUDE = 104°07'54.13" (104.131703)	NAD 27 (TARGET BOTTOM HOLE) LATITUDE = 40°41'57.98" (40.699439) LONGITUDE = 104°07'53.96" (104.131656)
STATE PLANE NAD 83 (CO. NORTH) N: 1507696.32 E: 3380993.65	STATE PLANE NAD 83 (CO. NORTH) N: 1507453.53 E: 3378841.75	STATE PLANE NAD 83 (CO. NORTH) N: 1500868.24 E: 3379242.07	STATE PLANE NAD 83 (CO. NORTH) N: 1500568.69 E: 3379260.28
STATE PLANE NAD 27 (CO. NORTH) N: 507694.86 E: 2381143.40	STATE PLANE NAD 27 (CO. NORTH) N: 507452.11 E: 2378991.44	STATE PLANE NAD 27 (CO. NORTH) N: 500866.93 E: 2379391.86	STATE PLANE NAD 27 (CO. NORTH) N: 500567.38 E: 2379410.07

BASIS OF BEARINGS
BASIS OF BEARINGS IS A G.P.S. OBSERVATION
BASIS OF ELEVATION
SPOT ELEVATION LOCATED AT THE NORTHEAST CORNER OF SECTION 2, T9N, R61W, 6th P.M., TAKEN FROM THE GROVER SOUTH, QUADRANGLE, COLORADO, WELD COUNTY, 7.5 MINUTE QUAD (TOPOGRAPHICAL MAP) PUBLISHED BY THE UNITED STATES DEPARTMENT OF THE INTERIOR, GEOLOGICAL SURVEY. SAID ELEVATION IS MARKED AS BEING 5045 FEET.

UELS, LLC
Corporate Office * 85 South 200 East
Vernal, UT 84078 * (435) 789-1017



CERTIFICATE OF REGISTRATION
THIS IS TO CERTIFY THAT THE ABOVE SURVEY WAS MADE IN ACCORDANCE WITH THE PROVISIONS OF THE COLORADO SURVEYING ACT, AND THAT THE SAME ARE TRUE AND CORRECT TO THE BEST OF MY KNOWLEDGE AND BELIEF.

REGISTERED LAND SURVEYOR
REGISTRATION NO. 28285
STATE OF COLORADO
JUL 19 2023

BISON OIL & GAS II

BASHOR FED 9-60 29-30-31-1
NW 1/4 SW 1/4, SECTION 29, T9N, R60W, 6th P.M.
WELD COUNTY, COLORADO

SURVEYED BY	GREG WEIMER, G.B.	08-11-17	SCALE
DRAWN BY	J.J.	08-22-17	1" = 1000'

WELL LOCATION PLAT