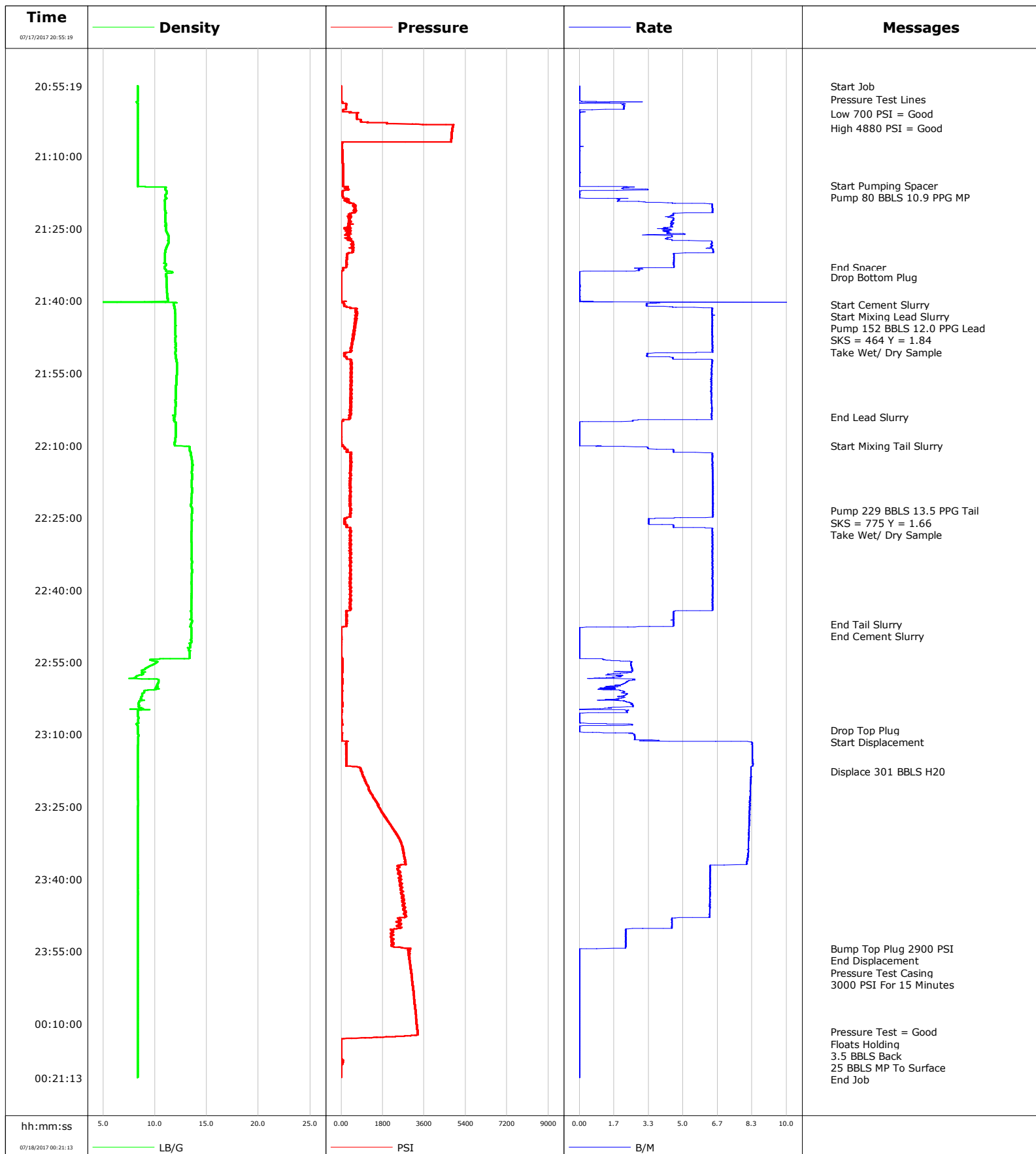


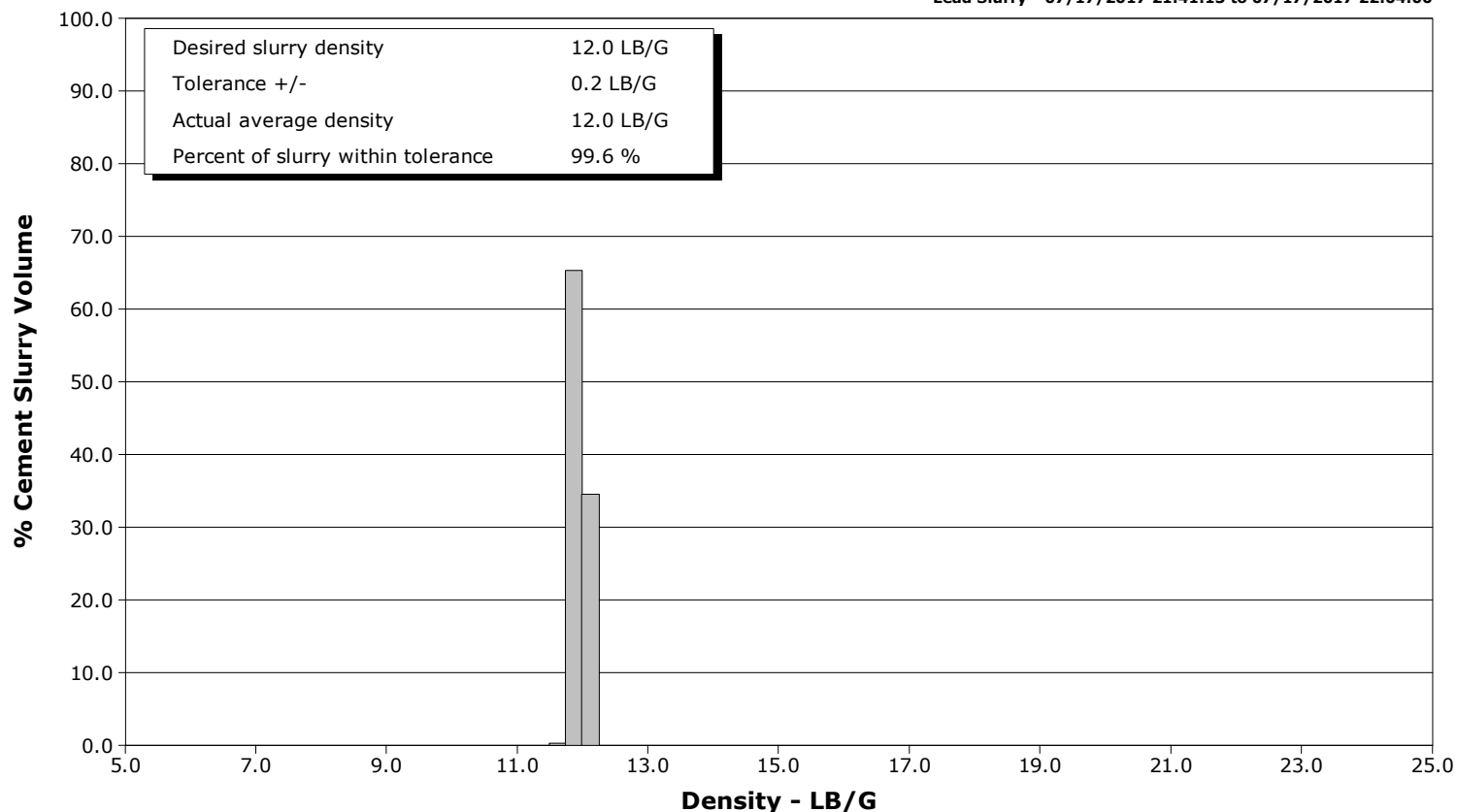
Well	FL Greens	Client	Anadarko
Field	Wattenberg	SIR No.	2545102
Engineer	Conley Jensen/ Joe Sanchez	Job Type	5.5" Monobore
Country	United States	Job Date	07-17-2017



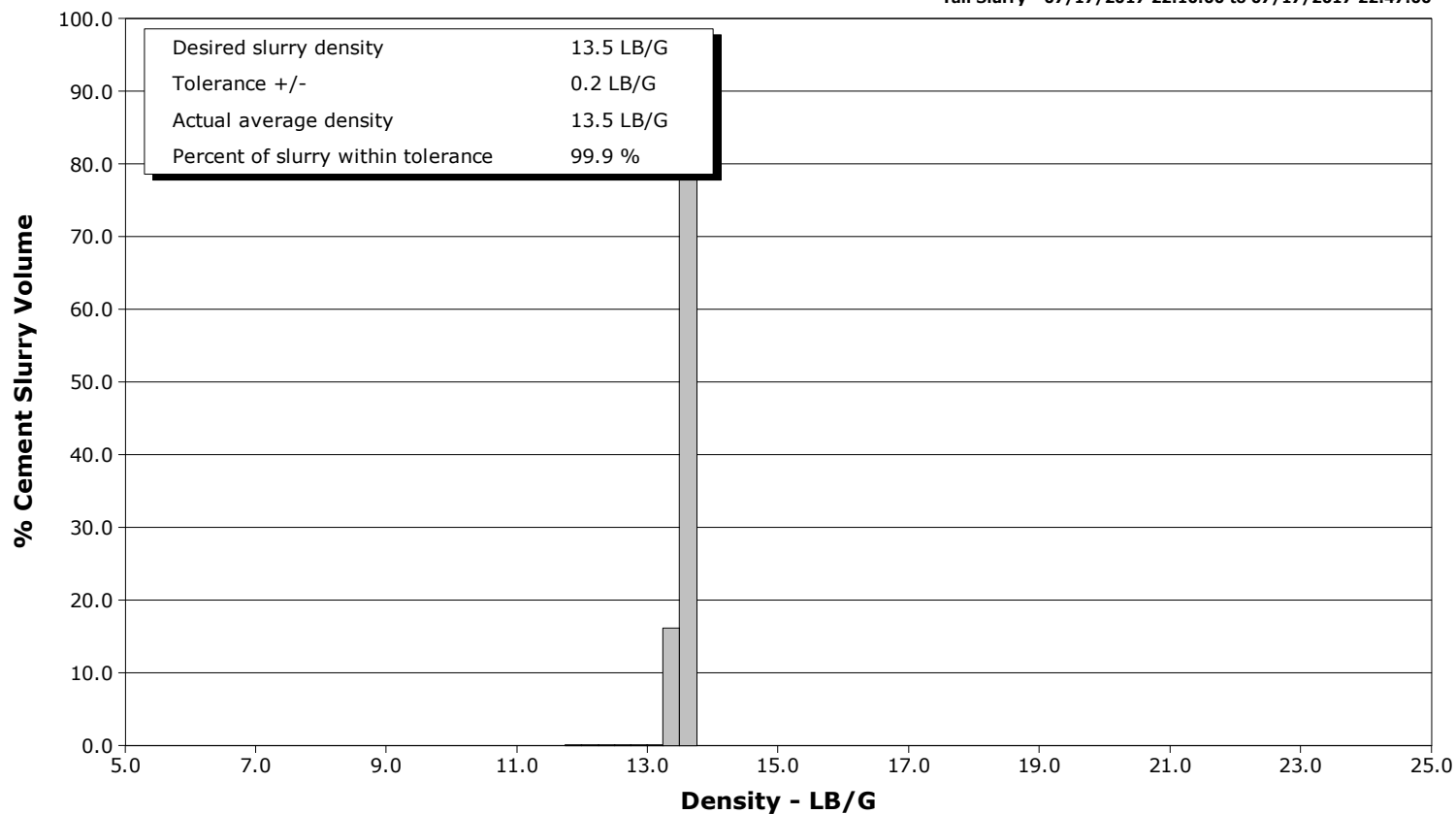
Well FL Greens
Field Wattenberg
Engineer Conley Jensen/ Joe Sanchez
Country United States

Client Anadarko
SIR No. 2545102
Job Type 5.5" Monobore
Job Date 07-17-2017

Lead Slurry - 07/17/2017 21:41:13 to 07/17/2017 22:04:00



Tail Slurry - 07/17/2017 22:10:00 to 07/17/2017 22:47:00



Cementing Service Report

				Customer Anadarko			Job Number 2545102				
Well FL Greens 30C-5HZ			Location (legal)			Schlumberger Location CWY			Job Start Jul/17/2017		
Field Wattenberg		Formation Name/Type Shale		Deviation deg		Bit Size 7.9 in		Well MD 13052.0 ft		Well TVD 7505.0 ft	
County Juneau		State/Province Colorado		BHP psi		BHST 233 degF		BHCT 226 degF		Pore Press. Gradient lb/gal	
Well Master 0631662959		API/UWI 05123422780000									
Rig Name Precision 461		Drilled For Oil		Service Via Land		Casing/ Liner					
						Depth, ft		Size, in		Weight, lb/ft	
										Grade	
										Thread	
Offshore Zone		Well Class New		Well Type Development		1854.0		9.6		36.0	
						13052.0		5.5		17.0	
Drilling Fluid Type		Max. Density lb/gal		Plastic Viscosity cP		Tubing/Drill Pipe					
						T/D		Depth, ft		Size, in	
										Weight, lb/ft	
										Grade	
										Thread	
Service Line Cementing		Job Type 5.5" Monobore									
Max. Allowed Tub. Press psi		Max. Allowed Ann. Press psi		WH Connection Double Cement head		Perforations/Open Hole					
						Top, ft		Bottom, ft		shot/ft	
						ft		ft		No. of Shots	
						ft		ft		Total Interval ft	
						ft		ft		Diameter in	
						Treat Down Casing		Displacement 300.0 bbl		Packer Type	
										Packer Depth ft	
						Tubing Vol. bbl		Casing Vol. 302.0 bbl		Annular Vol. 434.0 bbl	
										Openhole Vol. 768.0 bbl	
Casing/Tubing Secured <input checked="" type="checkbox"/>		1 Hole Vol. Circulated prior to Cement <input checked="" type="checkbox"/>				Casing Tools			Squeeze Job		
Lift Pressure psi						Shoe Type Float			Squeeze Type		
Pipe Rotated <input type="checkbox"/>		Pipe Reciprocated <input type="checkbox"/>				Shoe Depth 13025.0 ft			Tool Type		
No. Centralizers		Top Plugs 1		Bottom Plugs 1		Stage Tool Type			Tool Depth ft		
Cement Head Type Double						Stage Tool Depth ft			Tail Pipe Size in		
Job Scheduled For Jul/17/2017 15:00		Arrived on Location Jul/17/2017 15:00		Leave Location Jul/18/2017 02:00		Collar Type Float			Tail Pipe Depth ft		
						Collar Depth 12938.0 ft			Sqz. Total Vol. bbl		
Date	Time 24-hr clock	Treating Pressure PSI	Flow Rate B/M	Density LB/G	Volume BBL	Message					
07/17/2017	20:55:19	0	0.0	8.32	0.0	Started Acquisition					
07/17/2017	20:55:21	0	0.0	8.32	0.0	Start Job					
07/17/2017	20:55:59	0	0.0	8.32	0.0						
07/17/2017	20:56:39	-1	0.0	8.32	0.0						
07/17/2017	20:57:19	-0	0.0	8.32	0.0						
07/17/2017	20:57:59	3	0.0	8.32	0.0						
07/17/2017	20:58:00	3	0.0	8.32	0.0	Pressure Test Lines					
07/17/2017	20:58:39	39	2.3	8.31	0.1						
07/17/2017	20:59:19	215	2.1	8.32	1.1						
07/17/2017	20:59:59	212	2.1	8.33	2.5						
07/17/2017	21:00:39	77	0.0	8.33	3.1						
07/17/2017	21:01:00	708	0.0	8.33	3.1	Low 700 PSI = Good					
07/17/2017	21:01:19	683	0.0	8.33	3.1						
07/17/2017	21:01:59	672	0.0	8.33	3.1						
07/17/2017	21:02:39	842	0.0	8.33	3.1						
07/17/2017	21:03:19	3413	0.0	8.33	3.1						
07/17/2017	21:03:59	4842	0.0	8.33	3.1						
07/17/2017	21:04:00	4840	0.0	8.33	3.1	High 4880 PSI = Good					
07/17/2017	21:04:39	4817	0.0	8.33	3.1						
07/17/2017	21:05:19	4804	0.0	8.33	3.1						
07/17/2017	21:05:59	4792	0.0	8.33	3.1						

Well			Field	Job Start		Customer	Job Number	
FL Greens 30C-5HZ			Wattenberg		Jul/17/2017		Anadarko	2545102
Date	Time 24-hr clock	Treating Pressure PSI	Flow Rate B/M	Density LB/G	Volume BBL	Message		
07/17/2017	21:07:19	37	0.0	8.33	3.1			
07/17/2017	21:07:59	42	0.0	8.33	3.2			
07/17/2017	21:08:39	46	0.0	8.33	3.2			
07/17/2017	21:09:19	52	0.0	8.33	3.2			
07/17/2017	21:09:59	57	0.0	8.33	3.2			
07/17/2017	21:10:39	62	0.0	8.33	3.2			
07/17/2017	21:11:19	68	0.0	8.33	3.2			
07/17/2017	21:11:59	74	0.0	8.33	0.0			
07/17/2017	21:12:39	76	0.0	8.33	0.0			
07/17/2017	21:13:19	78	0.0	8.33	0.0			
07/17/2017	21:13:59	79	0.0	8.33	0.0			
07/17/2017	21:14:39	80	0.0	8.33	0.0			
07/17/2017	21:15:19	80	0.0	8.33	0.0			
07/17/2017	21:15:59	81	0.0	8.33	0.0			
07/17/2017	21:16:00	81	0.0	8.33	0.0	Start Pumping Spacer		
07/17/2017	21:16:39	322	2.0	11.03	0.9			
07/17/2017	21:17:19	68	0.0	11.11	2.0			
07/17/2017	21:17:59	65	0.0	11.02	2.0			
07/17/2017	21:18:00	65	0.0	11.02	2.0	Pump 80 BBLs 10.9 PPG MP		
07/17/2017	21:18:39	215	0.3	11.08	2.0			
07/17/2017	21:19:19	296	2.3	10.95	3.2			
07/17/2017	21:19:59	578	6.4	10.96	6.2			
07/17/2017	21:20:39	639	6.4	10.95	10.5			
07/17/2017	21:21:19	678	6.4	11.01	14.8			
07/17/2017	21:21:59	358	4.5	11.02	18.6			
07/17/2017	21:22:39	391	4.4	11.00	21.5			
07/17/2017	21:23:19	343	4.5	10.99	24.5			
07/17/2017	21:23:59	347	4.5	11.06	27.5			
07/17/2017	21:24:39	285	4.4	11.06	30.5			
07/17/2017	21:25:19	269	4.4	11.07	33.3			
07/17/2017	21:25:59	330	4.5	11.20	36.1			
07/17/2017	21:26:39	294	4.5	11.29	39.1			
07/17/2017	21:27:19	297	4.5	11.28	41.9			
07/17/2017	21:27:59	504	6.4	11.29	45.9			
07/17/2017	21:28:39	490	6.4	11.15	50.1			
07/17/2017	21:29:19	521	6.4	11.03	54.4			
07/17/2017	21:29:59	490	6.4	10.98	58.7			
07/17/2017	21:30:39	247	4.6	10.96	61.8			
07/17/2017	21:31:19	237	4.6	10.95	64.8			
07/17/2017	21:31:59	234	4.5	10.95	67.9			
07/17/2017	21:32:39	223	4.6	11.03	70.9			
07/17/2017	21:33:00	212	4.6	10.90	72.5	End Spacer		
07/17/2017	21:33:19	73	3.1	10.95	73.6			
07/17/2017	21:33:59	-1	0.0	11.65	75.0			
07/17/2017	21:34:39	2	0.0	11.07	75.0			
07/17/2017	21:35:00	2	0.0	11.09	75.0	Drop Bottom Plug		
07/17/2017	21:35:19	1	0.0	11.09	75.0			
07/17/2017	21:35:59	1	0.0	11.11	75.0			
07/17/2017	21:36:39	2	0.0	11.12	75.0			
07/17/2017	21:37:19	1	0.0	11.13	75.1			
07/17/2017	21:37:59	1	0.0	11.16	75.1			
07/17/2017	21:38:39	1	0.0	11.18	75.1			
07/17/2017	21:39:19	1	0.0	11.21	75.1			
07/17/2017	21:39:59	1	0.0	11.24	75.1			

Well			Field	Job Start		Customer	Job Number
FL Greens 30C-5HZ			Wattenberg	Jul/17/2017		Anadarko	2545102
Date	Time 24-hr clock	Treating Pressure PSI	Flow Rate B/M	Density LB/G	Volume BBL	Message	
07/17/2017	21:41:13	212	4.5	11.86	3.8	Start Mixing Lead Slurry	
07/17/2017	21:41:19	367	4.7	11.86	4.3		
07/17/2017	21:41:30	474	6.4	11.89	5.4	Pump 152 BBLS 12.0 PPG Lead	
07/17/2017	21:41:50	571	6.4	11.91	7.5	SKS = 464 Y = 1.84	
07/17/2017	21:41:59	589	6.4	11.91	8.5		
07/17/2017	21:42:39	612	6.4	11.95	12.7		
07/17/2017	21:43:19	682	6.4	11.96	17.0		
07/17/2017	21:43:59	679	6.4	11.97	21.3		
07/17/2017	21:44:39	631	6.4	11.97	25.5		
07/17/2017	21:45:19	606	6.4	11.98	29.8		
07/17/2017	21:45:59	555	6.4	11.98	34.1	Take Wet/ Dry Sample	
07/17/2017	21:46:39	523	6.4	11.98	38.3		
07/17/2017	21:47:19	493	6.4	11.99	42.6		
07/17/2017	21:47:59	468	6.4	11.98	46.9		
07/17/2017	21:48:39	470	6.4	11.99	51.1		
07/17/2017	21:49:19	433	6.4	11.99	55.4		
07/17/2017	21:49:59	404	6.4	11.99	59.7		
07/17/2017	21:50:39	436	6.4	11.98	64.0		
07/17/2017	21:51:19	117	3.3	12.01	66.5		
07/17/2017	21:51:59	227	4.5	12.03	69.1		
07/17/2017	21:52:39	466	6.4	12.08	73.2		
07/17/2017	21:53:19	466	6.4	12.10	77.4		
07/17/2017	21:53:59	431	6.4	12.11	81.7		
07/17/2017	21:54:39	458	6.4	12.09	85.9		
07/17/2017	21:55:19	410	6.4	12.08	90.2		
07/17/2017	21:55:59	411	6.4	12.06	94.4		
07/17/2017	21:56:39	424	6.3	12.06	98.7		
07/17/2017	21:57:19	437	6.4	12.04	102.9		
07/17/2017	21:57:59	448	6.3	12.01	107.2		
07/17/2017	21:58:39	405	6.3	12.00	111.4		
07/17/2017	21:59:19	405	6.4	12.00	115.6		
07/17/2017	21:59:59	418	6.4	11.99	119.9		
07/17/2017	22:00:39	395	6.4	11.98	124.1		
07/17/2017	22:01:19	404	6.4	12.00	128.4		
07/17/2017	22:01:59	403	6.4	11.98	132.6		
07/17/2017	22:02:39	413	6.4	11.94	136.9		
07/17/2017	22:03:19	418	6.4	11.96	141.1		
07/17/2017	22:03:59	403	6.4	11.91	145.4		
07/17/2017	22:04:00	403	6.4	11.91	145.5	End Lead Slurry	
07/17/2017	22:04:39	87	3.3	11.85	149.6		
07/17/2017	22:05:19	-1	0.0	11.99	150.6		
07/17/2017	22:05:59	0	0.0	11.99	150.6		
07/17/2017	22:06:39	0	0.0	11.99	0.0		
07/17/2017	22:07:19	1	0.0	11.99	0.0		
07/17/2017	22:07:59	2	0.0	11.99	0.0		
07/17/2017	22:08:39	2	0.0	11.98	0.0		
07/17/2017	22:09:19	2	0.0	11.88	0.0		
07/17/2017	22:09:59	-3	0.0	11.92	0.0		
07/17/2017	22:10:00	-3	0.0	11.92	0.0	Start Mixing Tail Slurry	
07/17/2017	22:10:39	158	3.3	13.37	1.5		
07/17/2017	22:11:19	237	4.5	13.42	4.4		
07/17/2017	22:11:59	393	6.4	13.46	8.4		
07/17/2017	22:12:39	414	6.4	13.54	12.7		
07/17/2017	22:13:19	445	6.4	13.58	16.9		

Well			Field	Job Start		Customer		Job Number	
FL Greens 30C-5HZ			Wattenberg		Jul/17/2017		Anadarko		2545102
Date	Time 24-hr clock	Treating Pressure PSI	Flow Rate B/M	Density LB/G	Volume BBL	Message			
07/17/2017	22:14:39	440	6.4	13.60	25.5				
07/17/2017	22:15:19	412	6.4	13.56	29.8				
07/17/2017	22:15:59	395	6.4	13.58	34.1				
07/17/2017	22:16:39	431	6.4	13.58	38.3				
07/17/2017	22:17:19	421	6.4	13.56	42.6				
07/17/2017	22:17:59	403	6.4	13.54	46.9				
07/17/2017	22:18:39	381	6.4	13.55	51.2				
07/17/2017	22:19:19	421	6.4	13.58	55.5				
07/17/2017	22:19:59	405	6.4	13.56	59.8				
07/17/2017	22:20:39	381	6.4	13.53	64.1				
07/17/2017	22:21:19	384	6.4	13.50	68.4				
07/17/2017	22:21:59	419	6.5	13.51	72.7				
07/17/2017	22:22:39	392	6.4	13.49	77.0				
07/17/2017	22:23:19	395	6.4	13.60	81.3				
07/17/2017	22:23:32	427	6.4	13.60	82.6	Pump 229 BBLS 13.5 PPG Tail			
07/17/2017	22:23:50	397	6.4	13.60	84.6	SKS = 775 Y = 1.66			
07/17/2017	22:23:59	378	6.5	13.58	85.5				
07/17/2017	22:24:06	395	6.4	13.56	86.3	Take Wet/ Dry Sample			
07/17/2017	22:24:39	376	6.5	13.52	89.8				
07/17/2017	22:25:19	130	3.4	13.56	93.2				
07/17/2017	22:25:59	146	3.3	13.53	95.4				
07/17/2017	22:26:39	214	4.5	13.55	97.9				
07/17/2017	22:27:19	426	6.4	13.54	101.4				
07/17/2017	22:27:59	408	6.4	13.51	105.7				
07/17/2017	22:28:39	431	6.4	13.50	110.0				
07/17/2017	22:29:19	423	6.4	13.51	114.2				
07/17/2017	22:29:59	398	6.4	13.52	118.5				
07/17/2017	22:30:39	417	6.4	13.52	122.8				
07/17/2017	22:31:19	381	6.4	13.54	127.1				
07/17/2017	22:31:59	380	6.4	13.56	131.3				
07/17/2017	22:32:39	405	6.4	13.55	135.6				
07/17/2017	22:33:19	428	6.4	13.54	139.9				
07/17/2017	22:33:59	393	6.4	13.56	144.2				
07/17/2017	22:34:39	392	6.4	13.55	148.4				
07/17/2017	22:35:19	379	6.4	13.55	152.7				
07/17/2017	22:35:59	405	6.4	13.57	157.0				
07/17/2017	22:36:39	434	6.4	13.55	161.3				
07/17/2017	22:37:19	397	6.4	13.55	165.6				
07/17/2017	22:37:59	382	6.4	13.53	169.8				
07/17/2017	22:38:39	394	6.4	13.51	174.1				
07/17/2017	22:39:19	429	6.4	13.52	178.4				
07/17/2017	22:39:59	439	6.4	13.54	182.7				
07/17/2017	22:40:39	432	6.4	13.54	186.9				
07/17/2017	22:41:19	398	6.4	13.51	191.2				
07/17/2017	22:41:59	396	6.4	13.50	195.5				
07/17/2017	22:42:39	415	6.4	13.48	199.8				
07/17/2017	22:43:19	426	6.4	13.50	204.1				
07/17/2017	22:43:59	412	6.4	13.50	208.3				
07/17/2017	22:44:39	214	4.5	13.49	212.0				
07/17/2017	22:45:19	211	4.5	13.48	215.0				
07/17/2017	22:45:59	210	4.5	13.48	218.0				
07/17/2017	22:46:39	220	4.5	13.56	221.0				
07/17/2017	22:47:00	207	4.5	13.48	222.6	End Tail Slurry			
07/17/2017	22:47:19	223	4.6	13.46	224.1				

Well			Field	Job Start		Customer	Job Number	
FL Greens 30C-5HZ			Wattenberg		Jul/17/2017		Anadarko	2545102
Date	Time 24-hr clock	Treating Pressure PSI	Flow Rate B/M	Density LB/G	Volume BBL	Message		
07/17/2017	22:48:39	1	0.0	13.49	225.6			
07/17/2017	22:49:19	5	0.0	13.48	225.6			
07/17/2017	22:49:59	6	0.0	13.48	225.6			
07/17/2017	22:50:39	6	0.0	13.52	225.6			
07/17/2017	22:51:19	5	0.0	13.40	225.6			
07/17/2017	22:51:59	6	0.0	13.34	225.6			
07/17/2017	22:52:39	5	0.0	13.37	225.6			
07/17/2017	22:53:19	5	0.0	13.36	225.6			
07/17/2017	22:53:59	6	0.0	13.35	225.6			
07/17/2017	22:54:39	66	1.6	9.76	226.1			
07/17/2017	22:55:19	64	2.5	9.97	227.7			
07/17/2017	22:55:59	60	2.5	9.34	229.4			
07/17/2017	22:56:39	55	2.5	8.77	231.0			
07/17/2017	22:57:19	19	1.9	8.85	232.6			
07/17/2017	22:57:59	32	2.0	8.19	233.8			
07/17/2017	22:58:39	60	2.7	10.35	234.9			
07/17/2017	22:59:19	54	2.2	10.28	236.5			
07/17/2017	22:59:59	19	1.3	10.29	237.8			
07/17/2017	23:00:39	12	1.0	10.12	238.7			
07/17/2017	23:01:19	38	2.0	8.93	240.0			
07/17/2017	23:01:59	36	2.1	8.76	241.5			
07/17/2017	23:02:39	19	1.6	8.65	242.8			
07/17/2017	23:03:19	50	2.4	8.47	244.1			
07/17/2017	23:03:59	55	2.6	8.45	245.8			
07/17/2017	23:04:39	-3	0.7	8.46	247.0			
07/17/2017	23:05:19	44	2.3	8.34	248.1			
07/17/2017	23:05:59	11	0.0	8.34	248.5			
07/17/2017	23:06:39	8	0.0	8.40	248.5			
07/17/2017	23:07:19	22	0.0	8.39	248.5			
07/17/2017	23:07:59	50	2.6	8.29	249.1			
07/17/2017	23:08:39	-6	0.0	8.33	249.5			
07/17/2017	23:09:00	-5	0.0	8.33	249.5	Drop Top Plug		
07/17/2017	23:09:19	-5	0.0	8.33	249.5			
07/17/2017	23:09:59	52	2.6	8.39	250.4			
07/17/2017	23:10:39	31	2.7	8.39	252.2			
07/17/2017	23:11:19	18	3.1	8.39	0.4			
07/17/2017	23:11:59	212	8.3	8.38	5.4			
07/17/2017	23:12:39	216	8.3	8.35	11.0			
07/17/2017	23:13:19	209	8.3	8.35	16.6			
07/17/2017	23:13:59	210	8.3	8.35	22.1			
07/17/2017	23:14:39	212	8.3	8.35	27.7			
07/17/2017	23:15:19	210	8.3	8.35	33.2			
07/17/2017	23:15:59	213	8.4	8.35	38.8			
07/17/2017	23:16:39	590	8.3	8.35	44.4			
07/17/2017	23:17:19	847	8.3	8.35	49.9			
07/17/2017	23:17:43	866	8.3	8.35	53.2	Displace 301 BBLS H2O		
07/17/2017	23:17:59	908	8.3	8.34	55.4			
07/17/2017	23:18:39	956	8.3	8.35	60.9			
07/17/2017	23:19:19	1021	8.3	8.35	66.4			
07/17/2017	23:19:59	1062	8.3	8.34	71.9			
07/17/2017	23:20:39	1160	8.2	8.35	77.4			
07/17/2017	23:21:19	1197	8.2	8.35	82.9			
07/17/2017	23:21:59	1291	8.2	8.35	88.4			
07/17/2017	23:22:39	1360	8.2	8.34	93.9			

Well			Field	Job Start		Customer		Job Number	
FL Greens 30C-5HZ			Wattenberg		Jul/17/2017		Anadarko		2545102
Date	Time 24-hr clock	Treating Pressure PSI	Flow Rate B/M	Density LB/G	Volume BBL	Message			
07/17/2017	23:23:59	1536	8.2	8.35	104.9				
07/17/2017	23:24:39	1623	8.2	8.35	110.4				
07/17/2017	23:25:19	1691	8.2	8.34	115.8				
07/17/2017	23:25:59	1757	8.2	8.34	121.3				
07/17/2017	23:26:39	1847	8.2	8.34	126.8				
07/17/2017	23:27:19	1947	8.2	8.34	132.2				
07/17/2017	23:27:59	2039	8.2	8.34	137.7				
07/17/2017	23:28:39	2135	8.2	8.34	143.1				
07/17/2017	23:29:19	2221	8.2	8.34	148.6				
07/17/2017	23:29:59	2303	8.2	8.34	154.0				
07/17/2017	23:30:39	2391	8.2	8.34	159.5				
07/17/2017	23:31:19	2477	8.2	8.35	164.9				
07/17/2017	23:31:59	2551	8.1	8.35	170.4				
07/17/2017	23:32:39	2633	8.1	8.34	175.8				
07/17/2017	23:33:19	2672	8.2	8.35	181.2				
07/17/2017	23:33:59	2691	8.1	8.35	186.7				
07/17/2017	23:34:39	2728	8.1	8.35	192.1				
07/17/2017	23:35:19	2743	8.1	8.34	197.5				
07/17/2017	23:35:59	2769	8.1	8.35	202.9				
07/17/2017	23:36:39	2805	8.1	8.35	208.3				
07/17/2017	23:37:19	2438	6.3	8.35	213.3				
07/17/2017	23:37:59	2529	6.3	8.35	217.5				
07/17/2017	23:38:39	2535	6.3	8.35	221.7				
07/17/2017	23:39:19	2483	6.3	8.35	225.9				
07/17/2017	23:39:59	2529	6.3	8.35	230.0				
07/17/2017	23:40:39	2525	6.3	8.35	234.2				
07/17/2017	23:41:19	2645	6.3	8.35	238.4				
07/17/2017	23:41:59	2633	6.3	8.35	242.6				
07/17/2017	23:42:39	2576	6.3	8.35	246.8				
07/17/2017	23:43:19	2632	6.3	8.35	251.0				
07/17/2017	23:43:59	2629	6.3	8.35	255.2				
07/17/2017	23:44:39	2731	6.3	8.35	259.4				
07/17/2017	23:45:19	2740	6.3	8.35	263.6				
07/17/2017	23:45:59	2699	6.3	8.35	267.8				
07/17/2017	23:46:39	2714	6.3	8.35	272.0				
07/17/2017	23:47:19	2731	6.3	8.35	276.2				
07/17/2017	23:47:59	2676	6.2	8.35	280.3				
07/17/2017	23:48:39	2543	4.5	8.35	283.4				
07/17/2017	23:49:19	2432	4.5	8.35	286.4				
07/17/2017	23:49:59	2467	4.4	8.35	289.3				
07/17/2017	23:50:39	2221	2.2	8.35	291.5				
07/17/2017	23:51:19	2183	2.2	8.34	293.0				
07/17/2017	23:51:59	2268	2.2	8.35	294.5				
07/17/2017	23:52:39	2207	2.2	8.35	295.9				
07/17/2017	23:53:19	2170	2.2	8.34	297.4				
07/17/2017	23:53:59	2175	2.2	8.34	298.9				
07/17/2017	23:54:27	2893	0.4	8.35	299.9	Bump Top Plug 2900 PSI			
07/17/2017	23:54:28	2969	0.1	8.35	299.9	End Displacement			
07/17/2017	23:54:39	3018	0.0	8.35	299.9				
07/17/2017	23:55:16	2995	0.0	8.35	299.9	Pressure Test Casing			
07/17/2017	23:55:19	2932	0.0	8.35	299.9				
07/17/2017	23:55:59	2980	0.0	8.35	299.9				
07/17/2017	23:56:39	2978	0.0	8.35	299.9				
07/17/2017	23:57:19	2984	0.0	8.35	299.9				

Well			Field		Job Start		Customer		Job Number	
FL Greens 30C-5HZ			Wattenberg		Jul/17/2017		Anadarko		2545102	
Date	Time 24-hr clock	Treating Pressure PSI	Flow Rate B/M	Density LB/G	Volume BBL	Message				
07/17/2017	23:58:39	3026	0.0	8.35	299.9					
07/17/2017	23:59:19	3045	0.0	8.35	299.9					
07/17/2017	23:59:59	3062	0.0	8.35	299.9					
07/18/2017	00:00:39	3076	0.0	8.35	299.9					
07/18/2017	00:01:19	3094	0.0	8.35	299.9					
07/18/2017	00:01:59	3109	0.0	8.35	300.0					
07/18/2017	00:02:39	3125	0.0	8.35	300.0					
07/18/2017	00:03:19	3140	0.0	8.35	300.0					
07/18/2017	00:03:59	3155	0.0	8.35	300.0					
07/18/2017	00:04:39	3170	0.0	8.35	300.0					
07/18/2017	00:05:19	3185	0.0	8.35	300.0					
07/18/2017	00:05:59	3199	0.0	8.35	300.0					
07/18/2017	00:06:39	3214	0.0	8.35	300.0					
07/18/2017	00:07:19	3228	0.0	8.35	300.0					
07/18/2017	00:07:59	3242	0.0	8.35	300.0					
07/18/2017	00:08:39	3257	0.0	8.35	300.0					
07/18/2017	00:09:19	3270	0.0	8.35	300.0					
07/18/2017	00:09:59	3284	0.0	8.35	300.0					
07/18/2017	00:10:39	3297	0.0	8.35	300.0					
07/18/2017	00:11:19	3310	0.0	8.35	300.0					
07/18/2017	00:11:41	3317	0.0	8.35	300.0	Pressure Test = Good				
07/18/2017	00:11:59	3324	0.0	8.35	300.0					
07/18/2017	00:12:39	2463	0.0	8.35	300.0					
07/18/2017	00:13:18	-7	0.0	8.35	300.0	Floats Holding				
07/18/2017	00:13:19	-7	0.0	8.35	300.0					
07/18/2017	00:13:59	-4	0.0	8.35	300.0					
07/18/2017	00:14:39	-3	0.0	8.35	300.0					
07/18/2017	00:15:19	-2	0.0	8.35	300.0					
07/18/2017	00:15:59	-2	0.0	8.35	300.0					
07/18/2017	00:16:00	-3	0.0	8.35	300.0	25 BBLS MP To Surface				
07/18/2017	00:16:39	-2	0.0	8.35	300.0					
07/18/2017	00:17:19	10	0.0	8.35	300.0					
07/18/2017	00:17:59	81	0.0	8.35	300.0					
07/18/2017	00:18:39	9	0.0	8.34	300.0					
07/18/2017	00:19:19	-4	0.0	8.34	300.0					
07/18/2017	00:19:56	-4	0.0	8.34	300.0	End Job				
07/18/2017	00:19:59	-4	0.0	8.34	300.0					

Post Job Summary

Average Pump Rates, bbl/min					Volume of Fluid Injected, bbl			
Slurry 4.7	N2	Mud	Maximum Rate 12.8		Total Slurry 782.7	Mud 0.0	Spacer 78.3	N2
Treating Pressure Summary, psi					Breakdown Fluid			
Maximum 4914	Final -4	Average 994	Bump Plug to 3000	Breakdown	Type	Volume bbl	Density lb/gal	
Avg. N2 Percent %		Designed Slurry Volume 381.0 bbl	Displacement 249.7 bbl	Mix Water Temp 70 degF	Cement Circulated to Surface? <input type="checkbox"/>		Volume bbl	
					Washed Thru Perfs <input type="checkbox"/>		To ft	
Customer or Authorized Representative Jeremy Skates			Schlumberger Supervisor Conley Jensen/ Joe Sanchez			Circulation Lost <input type="checkbox"/>	Job Completed <input checked="" type="checkbox"/>	
						-	-	