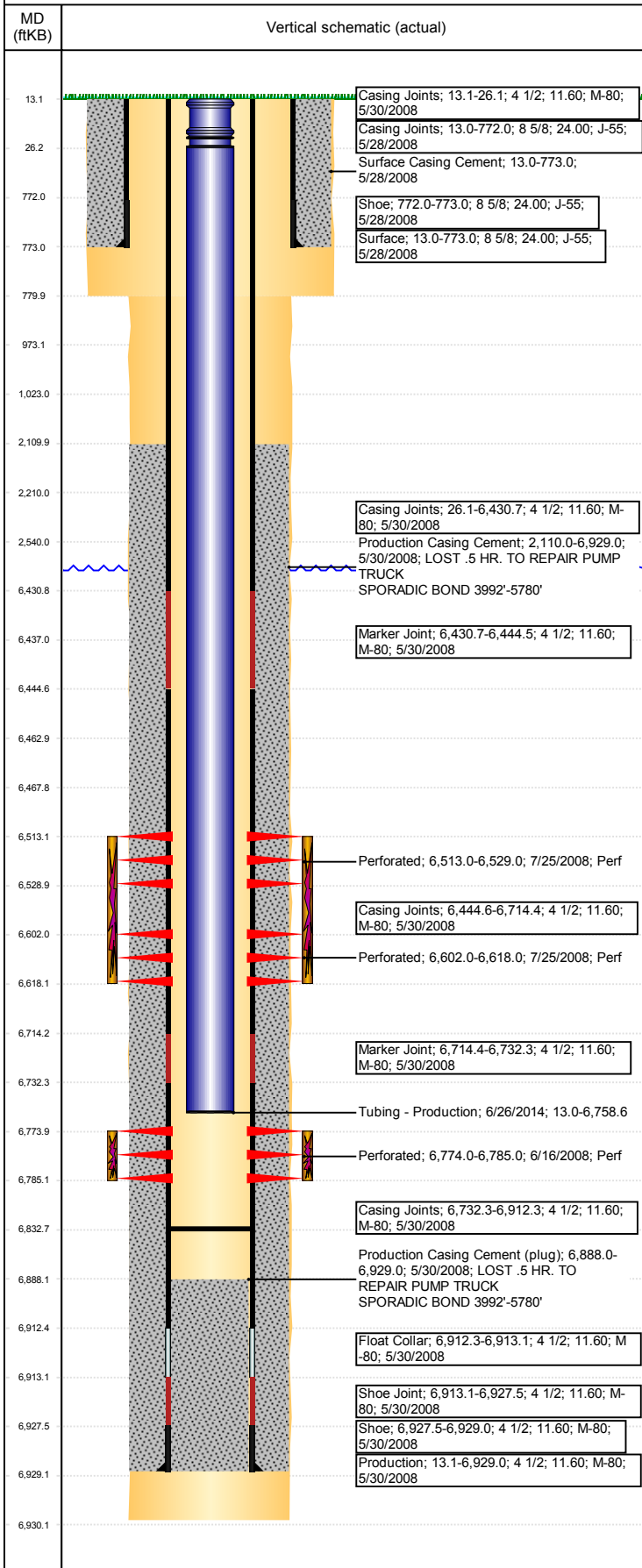


Operations Wellbore Schematic Report

Well Name: WELLS RANCH USX AA35-02

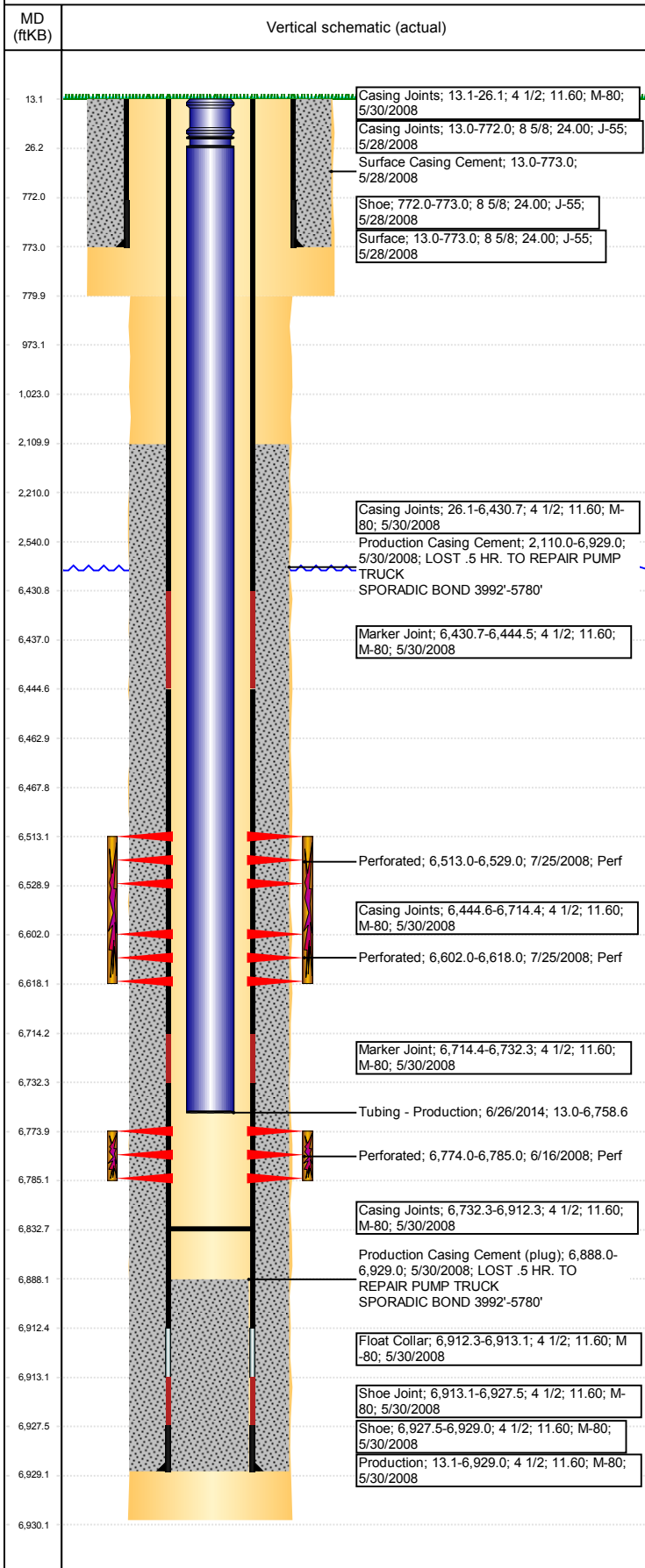
VERTICAL - ORIGINAL HOLE, 9/19/2017 3:17:56 PM



Well Header						
API 05-123-25882	Business Unit DJ BASIN	District 15	Well Config VERTICAL			
Original KB Elevation (ft) 4,802	KB - GL / MSL (ftKB) 13.00	Spud Date 5/28/2008		P & A Date		
Comment						
Directions To Well From the intersection of WCR 68 and WCR 67, go East 2/10ths of a mile, then South 1.8 miles, then East 1.2 miles, then South 5/10ths of a mile, then Northwest 0.2 miles into location						
Current PBTD (mKB) ORIGINAL HOLE - 6,832.6						
Surface Location (Congressional)						
Quarter 3 NW	Quarter 4 NE	Section 35	Township 6	Twnshp N/S Dir N	Range 63	Range E/W Dir W
Bottom Hole Location						
North-South Distance (ft)		From N or S Line	East-West Distance (ft)		From E or W Line	
Plug Back Total Depths						
Date	Depth (ftKB)	Method		Com		
5/30/2008	6,912.1	CASING TALLY		TOP OF FLOAT COLLAR		
6/13/2008	6,888.0	CASED HOLE LOG		DEPTH LOGGER ON CBL		
7/31/2008	6,863.0	TUBING TALLY		DRILL CIFTW W/ SHOE AND CHASE DOWN TO 6863'		
4/25/2014	6,846.0	TBG TALLY				
6/26/2014	6,832.6	TBG TALLY		DRILL & CHASE CBP TO 6832.58		
Wellbore Sections						
Section Des		Size (in)	Act Top, MD (ftKB)		Act Btm, MD (ftKB)	
SURFACE		12 1/4	13		780	
PRODUCTION		7 7/8	780		6,930	
Zone Statuses						
Zone Name	Status Date	Status	Fluid Type	Job		Prod Method
NIOBRARA	8/8/2008	PR	Water	DRILLING/COMPLETION - ORIGINAL, 5/27/2008...		Flowing
NIOBRARA	2/16/2010	PR				
CODELL	8/8/2008	PR	Water	DRILLING/COMPLETION - ORIGINAL, 5/27/2008...		Flowing
CODELL	2/16/2010	PR				
CODELL	12/7/2015	PR				
CODELL	4/13/2016	PR				
Casing Strings						
Csg Des	Run Date	OD (in)	Wt/Len (lb/ft)	Grade	Top, MD (ftKB)	MD (ftKB)
Surface	5/28/2008	8 5/8	24.00	J-55	13.0	773.0
Production	5/30/2008	4 1/2	11.60	M-80	13.1	6,929.0
Cement						
Des				Top (ftKB)		Btm (ftKB)
Surface Casing Cement				13.0		773.0
Production Casing Cement				2,110.0		6,929.0
Tubing Components						
Item Des		OD (in)	Wt (lb/ft)	Grade	Jts	Len (ft)
Perforation Data						
Linked Zone		Bnch/Stg	Sum of Entered Shot Total	Top (ftKB)	Btm (ftKB)	Date
NIOBRARA, ORIGINAL HOLE		A	64	6,513.00	6,529.00	7/25/2008
NIOBRARA, ORIGINAL HOLE		B	64	6,602.00	6,618.00	7/25/2008
CODELL, ORIGINAL HOLE			44	6,774.00	6,785.00	6/16/2008
Total (Sum)			172			
Other In Hole						
Run Date	Des			OD (in)	Top (ftKB)	Btm (ftKB)
8/15/2017	Cast Iron Bridge Plug			3.99	6,463.0	6,468.0
Logs						
Date	Type			Top, MD (ftKB)	Btm, MD (ftKB)	
5/30/2008	Caliper/Comp. Density/Neutron/GR/SP/ML			2,700.0	6,910.0	
5/30/2008	DIL/GR/SP/Caliper			780.0	6,930.0	
6/13/2008	CBL/CCL/GR			1,910.0	6,886.0	
7/26/2013	GYRO			13.0	6,700.0	

Well Name: WELLS RANCH USX AA35-02

VERTICAL - ORIGINAL HOLE, 9/19/2017 3:17:56 PM



Stimulation Intervals

Bnch/Stg	Start Date	Primary Job Type	
	7/25/2008	DRILLING/COMPLETION - ORIGINAL	
Comment			
FRAC THE CODELL - NO PROBLEMS TO REPORT			
Volume Slurry Total (gal)			
144,513.60			
Treat Pressure Avg (psi)	Treat Pressure Max (psi)	Slurry Rate Avg (bbl/min)	Slurry Rate Max (bbl/min)
3,286.0	3,615.0	22.5	22.6
Bnch/Stg	Start Date	Primary Job Type	
A & B	7/25/2008	DRILLING/COMPLETION - ORIGINAL	
Comment			
FRAC THE CODEL - NO PROBLEMS TO REPORT			
Volume Slurry Total (gal)			
183,309.01			
Treat Pressure Avg (psi)	Treat Pressure Max (psi)	Slurry Rate Avg (bbl/min)	Slurry Rate Max (bbl/min)
4,464.0	4,885.0	58.0	59.6