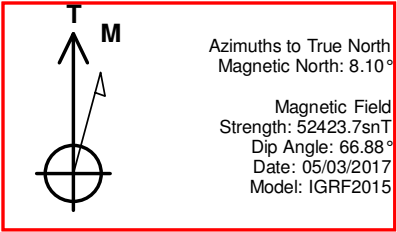


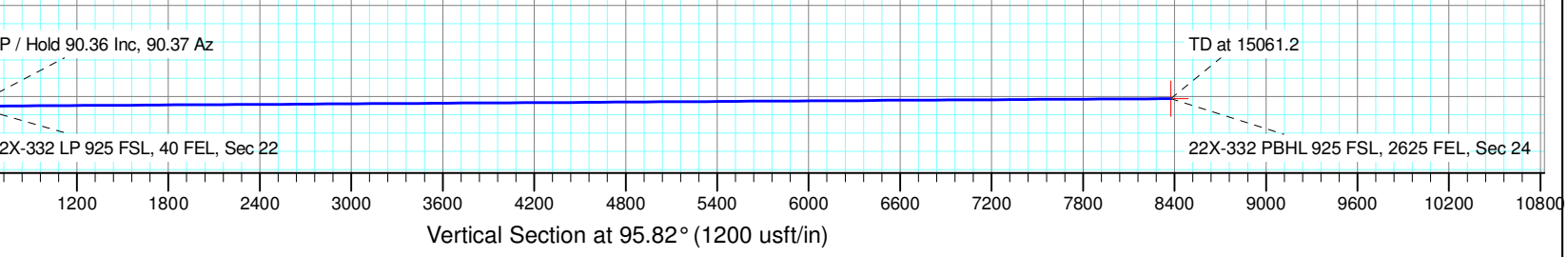
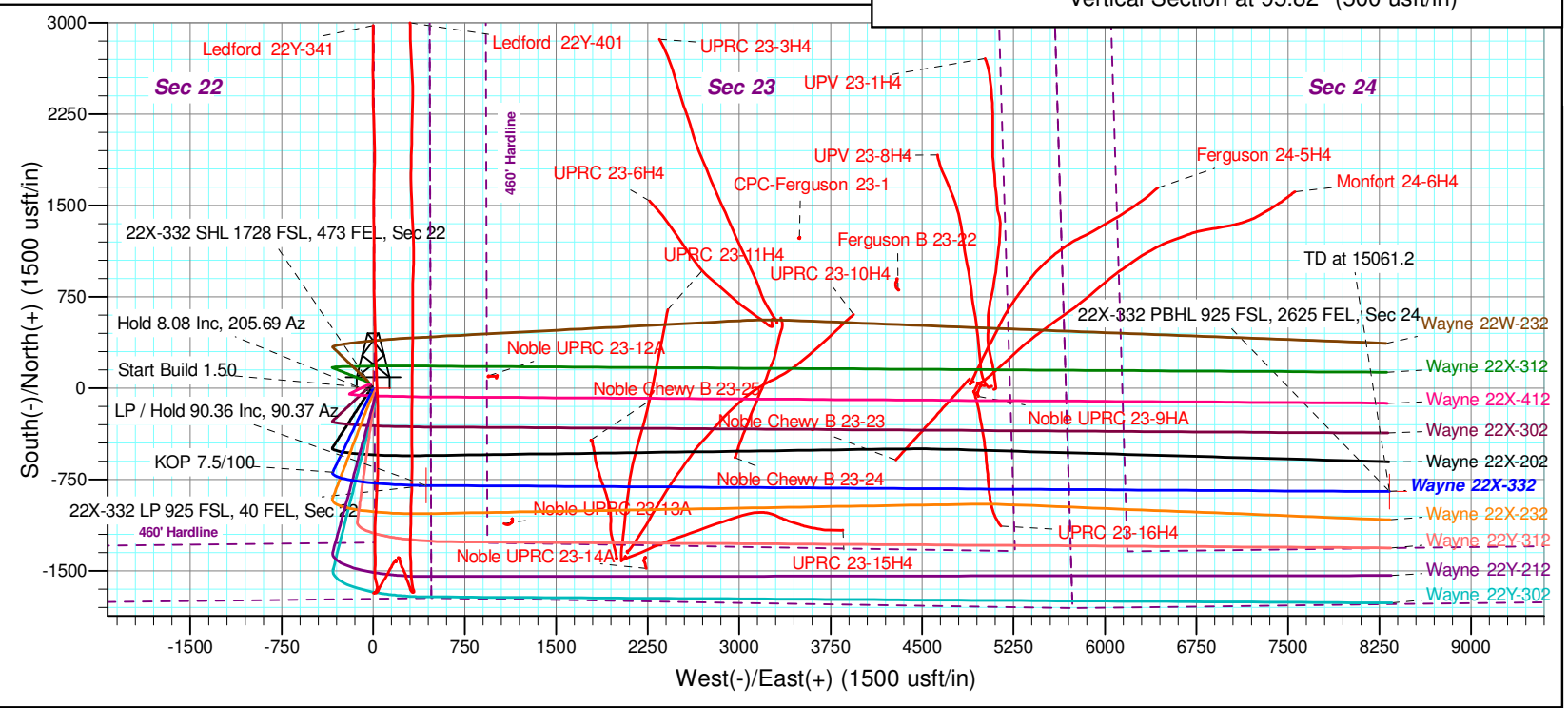
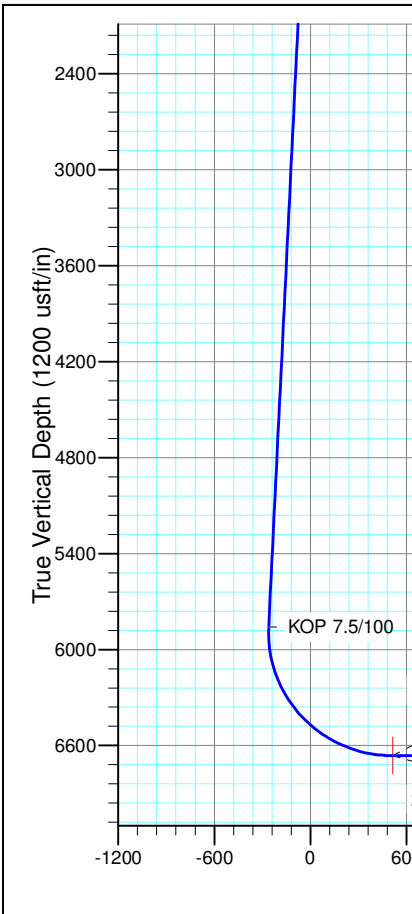
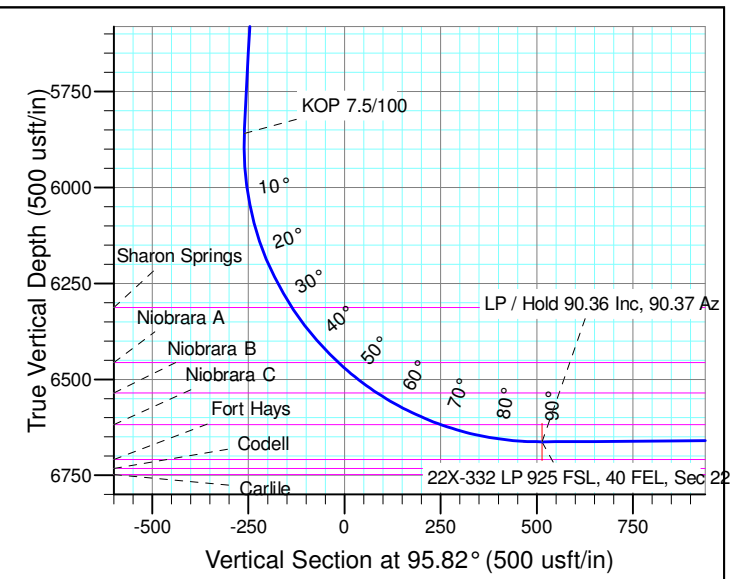


Well Name: Wayne 22X-332
Surface Location: Wayne 5N64W22X 1-10 PAD
North American Datum 1983
US State Plane 1983 , Colorado Northern Zone
Ground Elevation: 4600.0
WELL @ 4623.0usft (Original Well Elev)
Northing Easting Latitude Longitude Slot
0.0 0.0 1383622.48 3270754.14 40° 22' 56.540 N 104° 31' 41.096 W

SECTION DETAILS											
Sec	MD	Inc	Azi	TVD	+N/-S	+E/-W	Dleg	TFace	VSec	Target	
1	0.0	0.00	0.00	0.0	0.0	0.0	0.00	0.00	0.0		
2	200.0	0.00	0.00	200.0	0.0	0.0	0.00	0.00	0.0		
3	738.8	8.08	205.69	737.0	-34.2	-16.4	1.50	205.69	-12.9		
4	5913.0	8.08	205.69	5859.8	-689.7	-331.8	0.00	0.00	-260.2		
5	7163.7	90.36	90.37	6663.0	-798.3	434.9	7.50	-115.06	513.6	22X-332 LP 925 FSL, 40 FEL, Sec 22	
6	15061.2	90.36	90.37	6613.0	-848.9	8332.0	0.00	0.00	8375.2	22X-332 PBHL 925 FSL, 2625 FEL, Sec 24	



Project: SEC. 22-T5N-R64W
Site: Wayne 5N64W22X 1-10 PAD
Well: Wayne 22X-332
Wellbore: Wellbore #1
Design: Design #1 03May17 jps



Summary

Site Name Offset Well - Wellbore - Design	Reference Measured Depth (usft)	Offset Measured Depth (usft)	Distance Between Centres (usft)	Distance Between Ellipses (usft)	Separation Factor	Warning
Existing Wells Sec. 22-T5N-R64W						
Ledford 22Y-341 - Wellbore #1 - Wellbore #1	6,799.3	7,257.3	111.7	84.2	4.072	CC, ES, SF
Ledford 22Y-401 - Wellbore #1 - Wellbore #1	7,057.0	7,276.7	90.3	68.7	4.178	CC, ES, SF
Existing Wells Sec. 23-T5N-R64W						
CPC-Ferguson 23-1 - Wellbore #1 - Wellbore #1 01May1						Out of range
Ferguson 24-5H4 - Wellbore #1 - Wellbore #1 01May17 j						Out of range
Ferguson B 23-22 - Wellbore #1 - Wellbore #1 01May17	11,021.7	6,558.7	1,628.3	1,458.7	9.601	CC
Ferguson B 23-22 - Wellbore #1 - Wellbore #1 01May17	11,100.0	6,556.8	1,630.2	1,457.9	9.463	ES
Ferguson B 23-22 - Wellbore #1 - Wellbore #1 01May17	11,400.0	6,549.5	1,671.6	1,489.1	9.160	SF
Monfort 24-6H4 - Wellbore #1 - Wellbore #1 01May17 jps						Out of range
Noble Chewy B 23-23 - Wellbore #1 - Wellbore #1	11,013.2	6,703.3	233.3	61.4	1.357	Level 3, CC, ES, SF
Noble Chewy B 23-24 - Wellbore #1 - Wellbore #1	9,693.7	6,787.3	245.4	116.2	1.899	CC
Noble Chewy B 23-24 - Wellbore #1 - Wellbore #1	9,700.0	6,787.3	245.5	116.1	1.897	ES, SF
Noble Chewy B 23-25 - Wellbore #1 - Wellbore #1	8,515.0	6,732.9	375.4	286.7	4.231	CC, ES
Noble Chewy B 23-25 - Wellbore #1 - Wellbore #1	8,600.0	6,731.3	384.9	293.4	4.205	SF
Noble UPRC 23-12A - Wellbore #1 - Wellbore #1	7,671.0	6,638.5	904.8	847.7	15.843	CC
Noble UPRC 23-12A - Wellbore #1 - Wellbore #1	7,700.0	6,638.6	905.3	847.3	15.612	ES
Noble UPRC 23-12A - Wellbore #1 - Wellbore #1	8,100.0	6,639.6	1,001.4	930.8	14.193	SF
Noble UPRC 23-13A - Wellbore #1 - Wellbore #1	7,803.5	6,637.9	310.8	248.8	5.010	CC, ES
Noble UPRC 23-13A - Wellbore #1 - Wellbore #1	7,900.0	6,634.0	325.5	260.4	5.000	SF
Noble UPRC 23-14A - Wellbore #1 - Wellbore #1	8,974.1	6,600.0	671.5	571.7	6.731	CC
Noble UPRC 23-14A - Wellbore #1 - Wellbore #1	9,000.0	6,600.0	672.0	571.4	6.678	ES
Noble UPRC 23-14A - Wellbore #1 - Wellbore #1	9,100.0	6,600.0	683.2	579.2	6.571	SF
Noble UPRC 23-9HA - Wellbore #1 - Wellbore #1	11,686.6	6,600.0	759.3	567.1	3.949	CC
Noble UPRC 23-9HA - Wellbore #1 - Wellbore #1	11,700.0	6,600.0	759.5	566.7	3.940	ES
Noble UPRC 23-9HA - Wellbore #1 - Wellbore #1	11,800.0	6,600.0	767.8	571.6	3.914	SF
UPRC 23-10H4 - Wellbore #1 - Wellbore #1	10,295.7	6,838.9	1,192.3	1,050.3	8.398	CC
UPRC 23-10H4 - Wellbore #1 - Wellbore #1	10,400.0	6,881.2	1,196.1	1,048.9	8.128	ES
UPRC 23-10H4 - Wellbore #1 - Wellbore #1	10,800.0	7,038.3	1,277.8	1,111.6	7.686	SF
UPRC 23-11H4 - Wellbore #1 - Wellbore #1 01May17 jps	9,018.6	6,521.9	995.8	905.8	11.062	CC, ES
UPRC 23-11H4 - Wellbore #1 - Wellbore #1 01May17 jps	9,400.0	6,561.0	1,065.5	962.4	10.333	SF
UPRC 23-15H4 - Wellbore #1 - Wellbore #1	10,487.5	7,147.2	348.7	189.9	2.196	CC
UPRC 23-15H4 - Wellbore #1 - Wellbore #1	10,500.0	7,153.0	348.9	189.6	2.190	ES, SF
UPRC 23-16H4 - Wellbore #1 - Wellbore #1	11,812.9	6,795.3	196.5	13.1	1.072	Level 2, CC, ES, SF
UPRC 23-3H4 - Wellbore #1 - Wellbore #1 01May17 jps						Out of range
UPRC 23-6H4 - Wellbore #1 - Wellbore #1 01May17 jps						Out of range
UPV 23-1H4 - Wellbore #1 - Wellbore #1 01May17 jps						Out of range
UPV 23-8H4 - Wellbore #1 - Wellbore #1 01May17 jps						Out of range
Wayne 5N64W22X 1-10 PAD						
Wayne 22W-232 - Wellbore #1 - Design #1 03May17 jps	200.0	200.0	75.0	74.2	98.352	CC, ES
Wayne 22W-232 - Wellbore #1 - Design #1 03May17 jps	15,061.2	14,899.4	1,221.4	641.1	2.105	SF
Wayne 22X-202 - Wellbore #1 - Design #1 03May17 jps	200.0	200.0	15.0	14.2	19.662	CC
Wayne 22X-202 - Wellbore #1 - Design #1 03May17 jps	15,061.2	14,945.5	261.0	-288.7	0.475	Level 1, ES, SF
Wayne 22X-232 - Wellbore #1 - Design #1 03May17 jps	200.0	200.0	15.0	14.2	19.683	CC
Wayne 22X-232 - Wellbore #1 - Design #1 03May17 jps	14,100.0	14,060.0	211.4	-280.1	0.430	Level 1, SF
Wayne 22X-232 - Wellbore #1 - Design #1 03May17 jps	15,061.2	15,020.7	241.9	-319.4	0.431	Level 1, ES
Wayne 22X-302 - Wellbore #1 - Design #1 03May17 jps	200.0	200.0	30.0	29.2	39.345	CC
Wayne 22X-302 - Wellbore #1 - Design #1 03May17 jps	15,061.2	14,999.9	480.1	-103.4	0.823	Level 1, ES, SF
Wayne 22X-312 - Wellbore #1 - Design #1 03May17 jps	200.0	200.0	60.0	59.2	78.652	CC, ES
Wayne 22X-312 - Wellbore #1 - Design #1 03May17 jps	15,061.2	14,971.9	980.2	396.9	1.681	SF
Wayne 22X-412 - Wellbore #1 - Design #1 03May17 jps	200.0	200.0	45.0	44.3	59.028	CC, ES
Wayne 22X-412 - Wellbore #1 - Design #1 03May17 jps	15,061.2	14,927.0	730.4	153.2	1.265	Level 3, SF
Wayne 22Y-212 - Wellbore #1 - Design #1 03May17 jps	200.0	200.0	45.0	44.3	59.028	CC
Wayne 22Y-212 - Wellbore #1 - Design #1 03May17 jps	300.0	299.3	45.2	44.0	35.982	ES
Wayne 22Y-212 - Wellbore #1 - Design #1 03May17 jps	15,061.2	15,126.0	693.4	112.1	1.193	Level 2, SF
Wayne 22Y-302 - Wellbore #1 - Design #1 03May17 jps	200.0	200.0	60.0	59.2	78.652	CC
Wayne 22Y-302 - Wellbore #1 - Design #1 03May17 jps	300.0	299.0	60.2	58.9	47.934	ES
Wayne 22Y-302 - Wellbore #1 - Design #1 03May17 jps	15,061.2	15,216.9	914.7	331.2	1.568	SF
Wayne 22Y-312 - Wellbore #1 - Design #1 03May17 jps	200.0	200.0	30.0	29.2	39.345	CC
Wayne 22Y-312 - Wellbore #1 - Design #1 03May17 jps	15,061.2	14,908.3	462.9	-116.1	0.799	Level 1, ES, SF