



January 4, 2017

Mr. Mike Dinkel, REM, CSEM  
Kerr-McGee Oil & Gas Onshore LP  
1099 18th Street, Suite 1800  
Denver, Colorado 80202

**RE: Colorado Oil & Gas Conservation Commission (COGCC)  
Form 4 (Interim Reclamation Completion Notice)  
BAREFOOT 30C-25HZ (330949)  
Kerr-McGee Oil & Gas Onshore LP (Operator: 47120)**

Dear Mr. Dinkel:

Apex Companies, LLC (Apex) is pleased to present this letter to Kerr-McGee Oil & Gas Onshore LP (Kerr-McGee) documenting successful completion of interim reclamation efforts per COGCC Rule 1003 on the location specified above in Weld County, Colorado. Attached is a topographic map, which identifies the referenced location.

Based on communications with Kerr-McGee personnel and subsequent site inspections, Apex personnel confirmed that the unused portions of the reduced production footprint have been regraded and returned by the landowner to crop land and agricultural use. Based on this result, interim reclamation as defined by COGCC Rule 1003.e (1) has been achieved. Photographs required by Rule 1003.e (3) are also attached along with a diagram illustrating photo origins.

Apex appreciates the opportunity to provide environmental consulting services to Kerr-McGee with this project. Should you have any questions or require additional information, please don't hesitate to contact me.

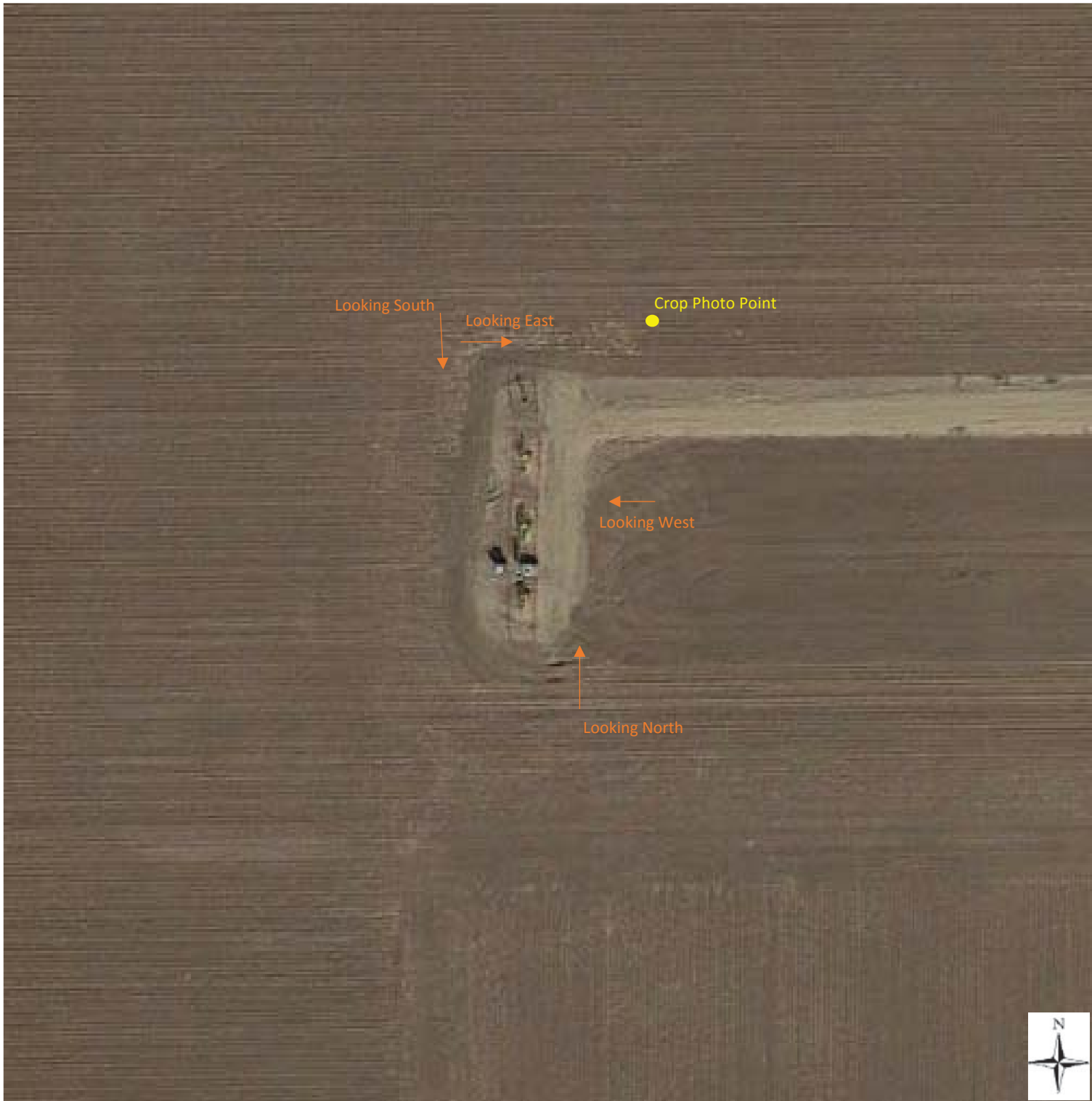
Sincerely,  
**Apex Companies, LLC**

A handwritten signature in black ink, appearing to read 'Chris Hines'.

Chris Hines  
Project Manager  
970-261-1127  
[chris.hines@apexcos.com](mailto:chris.hines@apexcos.com)

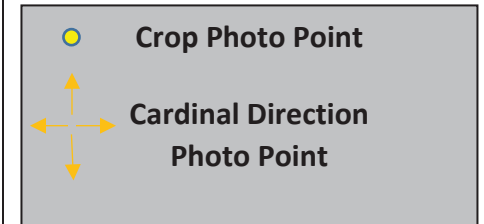
Attachments:

1. Vegetation Survey Map
2. Topographic Location Map
3. Inspection Photos



## Vegetation Survey Map

BAREFOOT 30C-25HZ  
(330949)

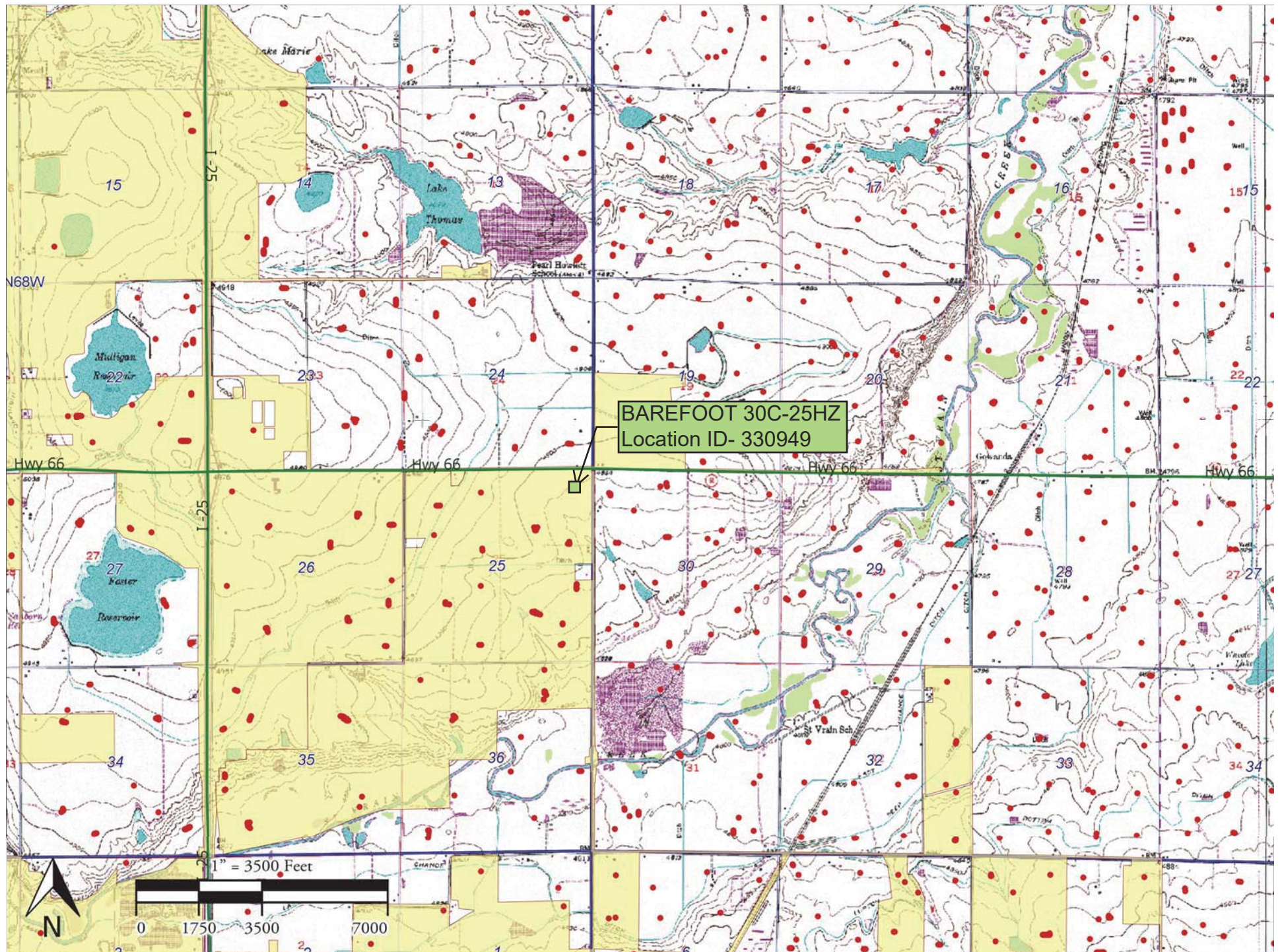


**Legal Description:** NENE, Sec 25,  
T3N-R68W  
**County:** Weld  
**Land Use:** Crop Land  
**Inspector:** Jennie Schoedel  
**Inspection Date:** 07/14/2016





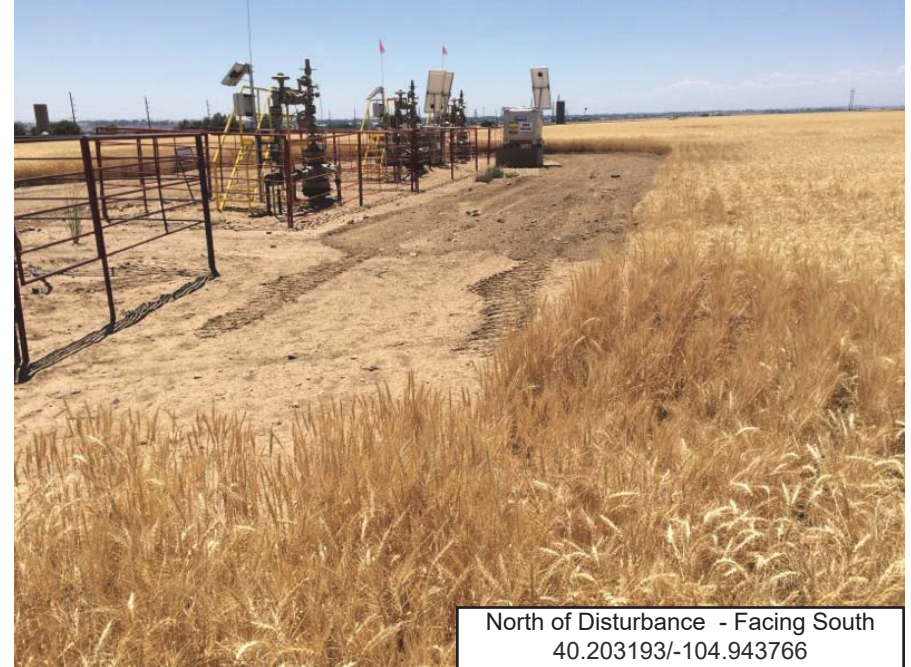
# BAREFOOT 30C-25HZ (330949) Topographic Location Map





**Kerr-McGee Oil & Gas Onshore LP  
Form 4 (Interim Reclamation Completion Notice)  
BAREFOOT 30C-25HZ (330949)**

Vegetation Assessment  
Completed (07/14/2016)







Crop Photo Point  
40.203248/-104.943407