



Temperature (Quick Look)  
Gamma Ray  
Casing Collar Log

Company TEP Rocky Mountain LLC  
Well Youberg SR 521-12  
Field Rulison  
County Garfield  
State Colorado

Company TEP Rocky Mountain LLC  
Well Youberg SR 521-12  
Field Rulison  
County Garfield  
State Colorado

Location: API #: 05-045-23433

1890 FNL 2125 FEL SWNE

SEC 12 TWP 7S RGE 94W

Permanent Datum Ground Level Elevation 7254'  
Log Measured From Kelly Bushing 24 FT  
Drilling Measured From Kelly Bushing

Other Services  
Elevation  
K.B. 7278'  
D.F. 7277'  
G.L. 7254'

Date 29-JUN-2017

Run Number	One
Depth Driller	9554 FT
Depth Logger	9462 FT
Bottom Logged Interval	9462 FT
Top Log Interval	Surface
Open Hole Size	8.750"
Type Fluid	Fresh Water
Density / Viscosity	8.34 lb/gal
Max. Recorded Temp.	197°F
Estimated Cement Top	4750 FT
Time Well Ready	ROA
Time Logger on Bottom	20:00
Equipment Number	HD-264
Location	Grand Junction
Recorded By	A. Ellsworth
Witnessed By	---

Borehole Record				Tubing Record			
Bit	From	To	Size	Weight	From	To	

Casing Record	Size (in)	Wgt (lbs/ft)	Grade	Top	Bottom
Surface Casing	9 5/8	32.3	---	Surface	1100 FT
Intermediate #1	4 1/2	11.6	---	Surface	9554 FT
Intermediate #2					
Liner					

<<< Fold Here >>>

All interpretations are opinions based on inferences from electrical or other measurements and we cannot and do not guarantee the accuracy or correctness of any interpretation, and we shall not, except in the case of gross or willful negligence on our part, be liable or responsible for any loss, costs, damages, or expenses incurred or sustained by anyone resulting from any interpretation made by any of our officers, agents or employees. These interpretations are also subject to our general terms and conditions set out in our current Price Schedule.

Comments

Log ran as per customer request  
Depth referenced to Kelly Bushing at 24 FT  
Marker joint logged from 5331 FT 5354 FT

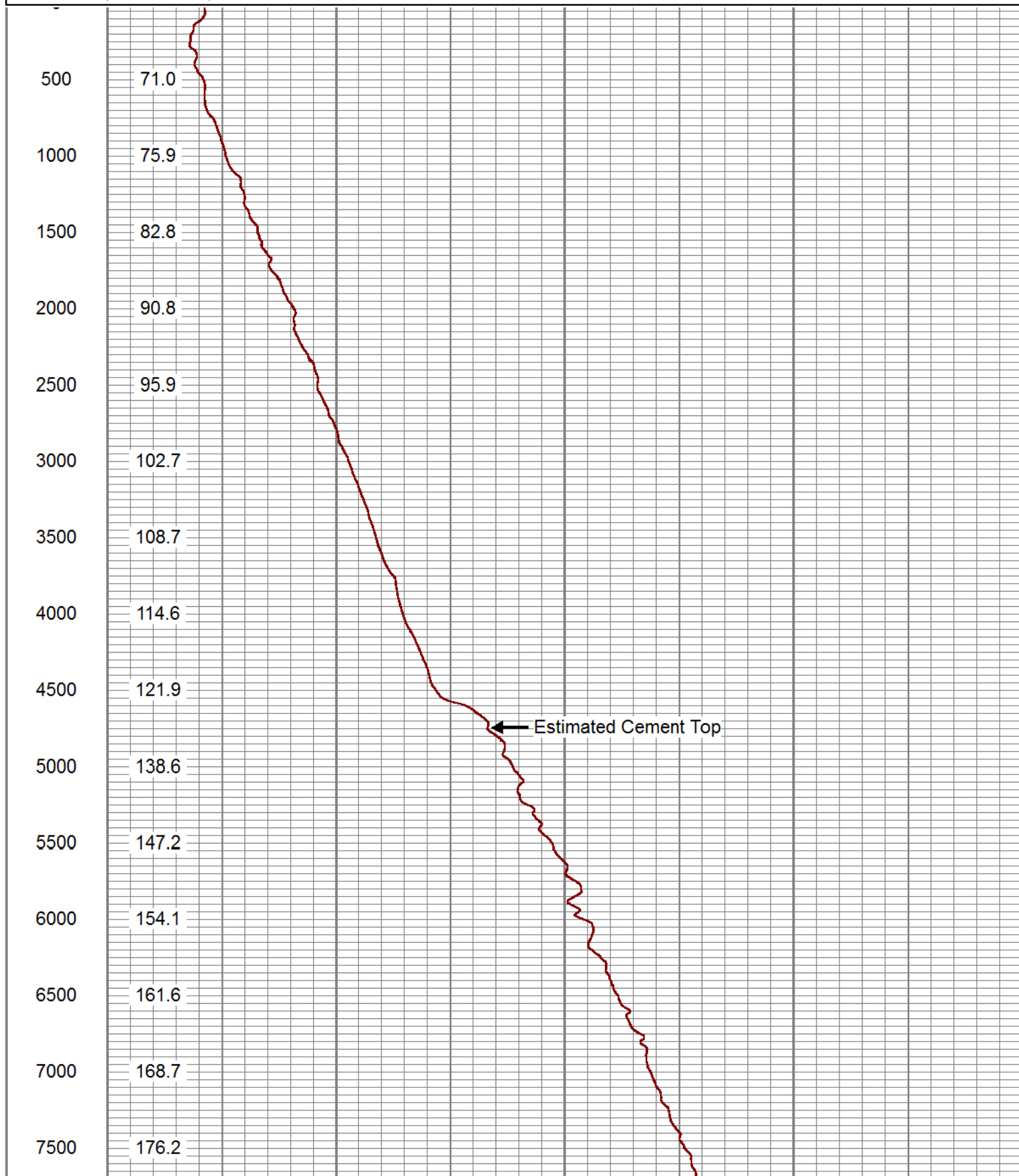
Thank you for choosing Reliance Oilfield Services, LLC!!

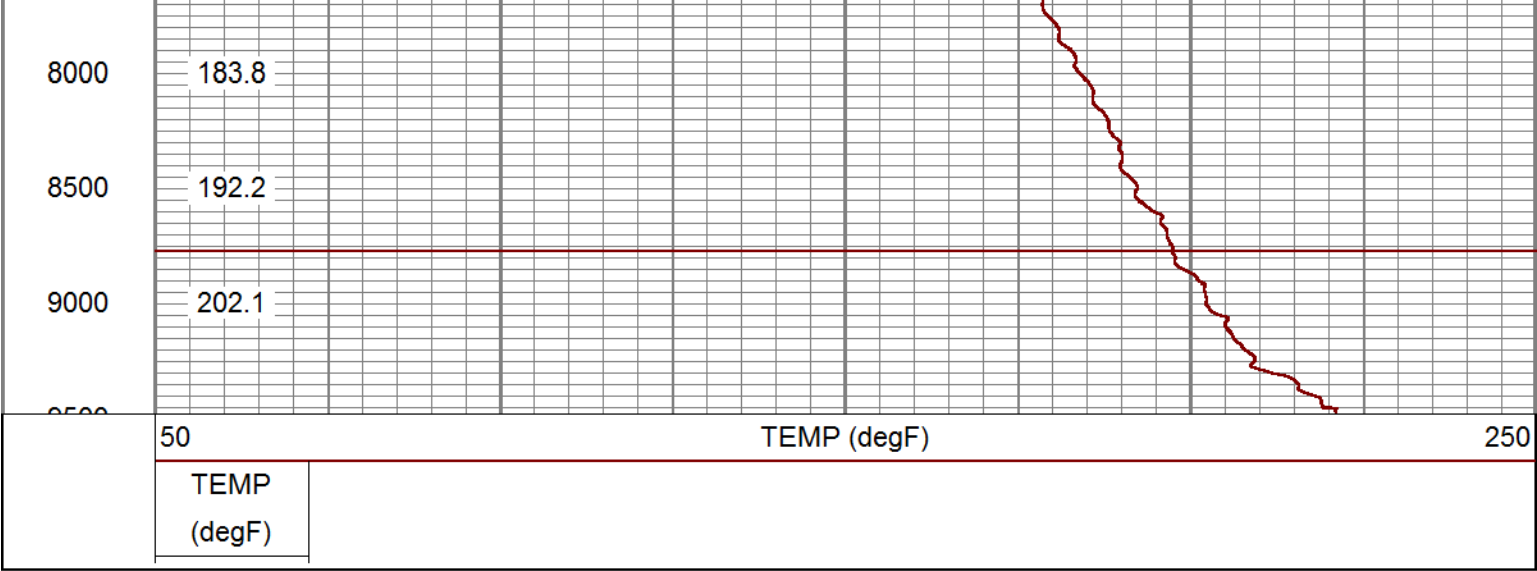


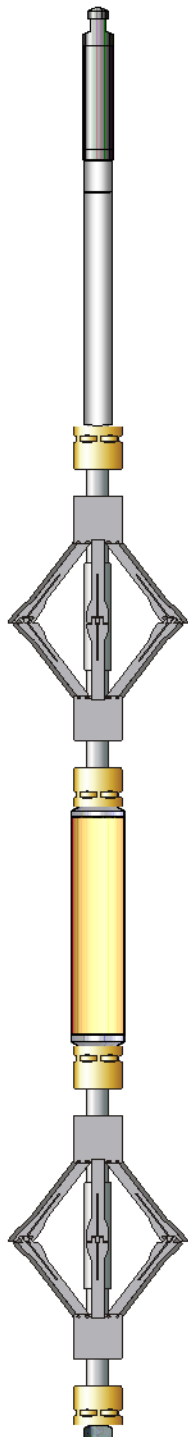
Main Pass (Quick Look)

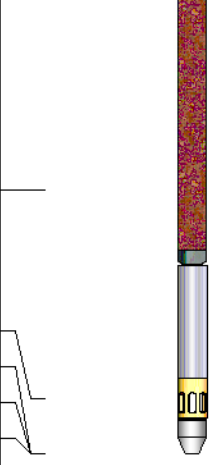
Database File tep\_youberg sr 521-12\_temp\_06-29-17\processed\_tep\_youberg sr 521-12\_temp\_06-29-17.db  
Dataset Pathname merge1.2  
Presentation Format ros\_temp\_ql\_tep  
Dataset Creation Thu Jun 29 22:01:10 2017  
Charted by Depth in Feet scaled 1:10000

50	TEMP (degF)		250
TEMP (degF)			






Sensor	Offset (ft)	Schematic	Description	Length (ft)	O.D. (in)	Weight (lb)
CCL	6.24		Titan_Electric_Cable_Heads-Titan_1-11/16" Electric Cable Head with 1" Fishing Neck	1.03	1.69	5.40
			UW_AGS-UW_AGS_001 (219135) Sondex Adapter - GO Box to Sondex Pin	0.21	1.69	1.00
			UW_XTU-UW_XTU_002 (10012277) Crossover Ultrawire Toolbus to Ultralink	1.58	1.69	6.50
			UW_PRC-DSS_RAC 5 Arm 2-3/4" Roller Centralizer	2.55	2.75	32.00
			UW_CCL-UW_CCL_028 (10025621) 3-1/8" Ultrawire Casing Collar Locator	1.61	3.13	36.00
			UW_PRC-DSS_RAC 5 Arm 2-3/4" Roller Centralizer	2.55	2.75	32.00

GR	1.76		UW_PGR-UW_PGR_020 (10019371) Production Gamma Ray	1.92	1.69	9.50
TEMP	0.37		UW_PRT-PRT_016 (10025093) Platinum Resistance Thermometer	1.04	1.69	5.20
HVOLTX	0.00					
ITEMPX	0.00					
TSTAMP	0.00		UW_BUL-UW_BUL_006 (10019730) Sondex Ultrawire Bullnose Terminator	0.22	1.69	1.20
Dataset: PROCESSED_TEP_Youberg SR 521-12_TEMP_06-29-17.db: field/well/run1/pass2 Total length: 12.71 ft Total weight: 128.80 lb O.D.: 3.13 in						

Calibration Report	
Database File	C:\ProgramData\Warrior\Data\TEP_Youberg SR 521-12_TEMP_06-29-17\PROCESSED_TEP_You
Dataset Pathname	pass2
Dataset Creation	Thu Jun 29 20:15:06 2017

Temperature Calibration Report					
		Serial Number:	10025093		
		Tool Model:	PRT_016		
		Performed:	Sun Oct 11 12:31:14 2015		
Point #	Reading		Reference		
1	13006.00	cps	68.00	degF	
2	18181.00	cps	104.00	degF	
3	29634.00	cps	176.00	degF	
4	41077.00	cps	248.00	degF	
5	52560.00	cps	320.00	degF	
6	58409.00	cps	356.00	degF	
7		cps		degF	
8		cps		degF	
9		cps		degF	
10		cps		degF	

Gamma Ray Calibration Report			
Serial Number:	10019371		
Tool Model:	UW_PGR_020		
Performed:	(Not Performed)		
Calibrator Value:	1.0	GAPI	
Background Reading:	0.0	cps	
Calibrator Reading:	1.0	cps	
Sensitivity:	1.0000	GAPI/cps	

	Company	TEP Rocky Mountain LLC
	Well	Youberg SR 521-12
	Field	Rulison
	County	Garfield

County  
State

Sanborn  
Colorado