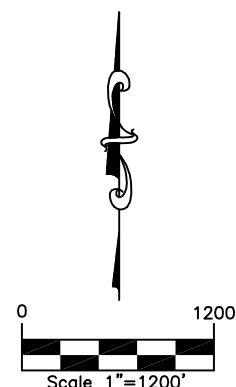
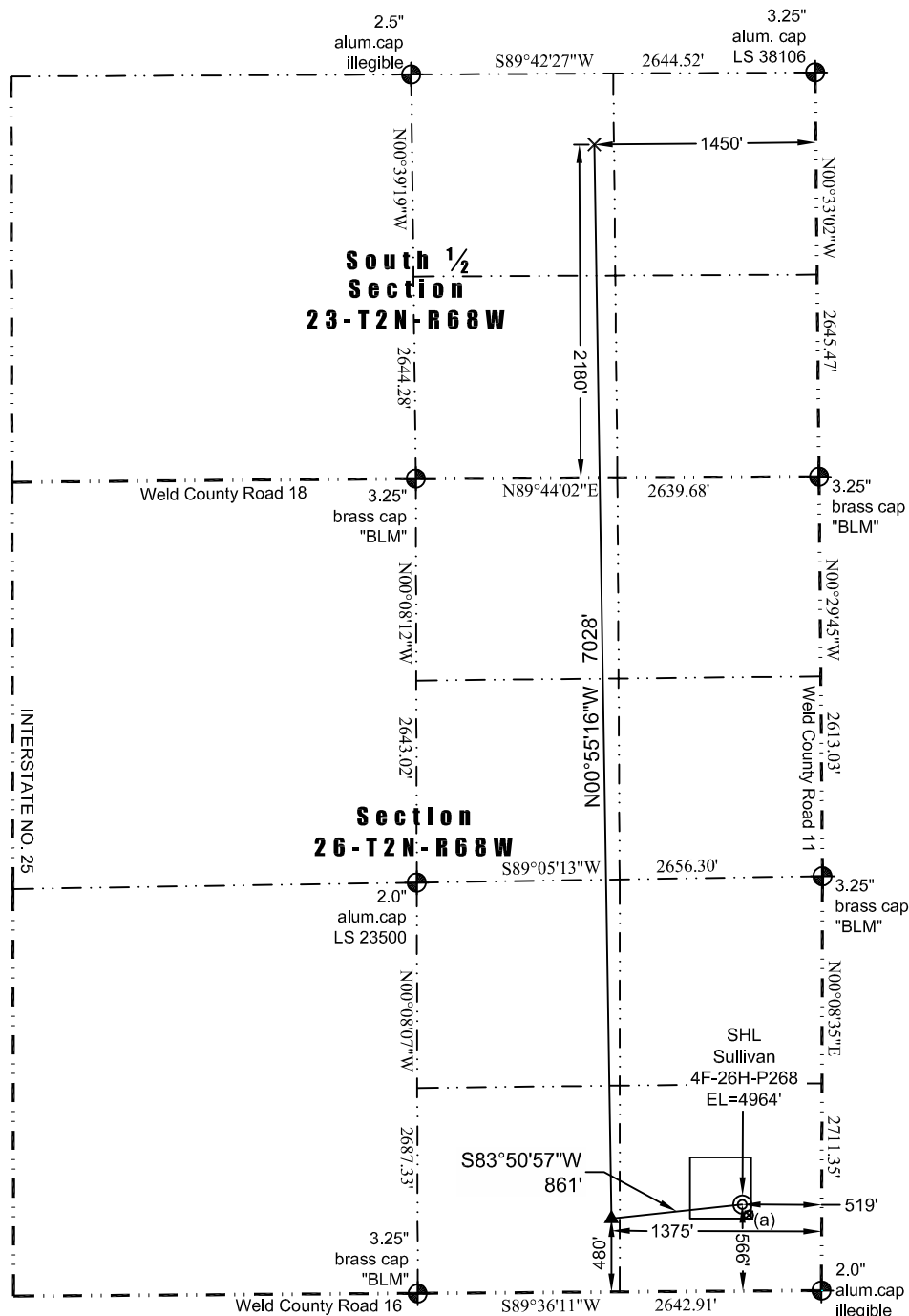




# WELL LOCATION CERTIFICATE

THIS MAP DOES NOT REPRESENT A BOUNDARY SURVEY

Washburn Land Surveying  
www.WashburnSurveying.com  
970-232-9645



## LEGEND

- ⊗ - Existing Well
- ⊕ - Found Survey Monument
- (c) - Calculated Dimension
- ⊙ - Surface Hole Location (SHL)
- ▲ - Top of Producing Zone (TPZ)
- × - Bottom Hole Location (BHL)

## (a) Existing Well Data:

Sullivan 44-26  
Latitude: N 40.103812°  
Longitude: W 104.962807°  
FSL: 556'  
FEL: 514'  
ELEV: 4964'  
PDOP: 1.8

## Proposed Well Data:

Latitude: (SHL: N 40.103839°)  
(TPZ: N 40.103600°)  
(BHL: N 40.122892°)  
Longitude: (SHL: W 104.962825°)  
(TPZ: W 104.965887°)  
(BHL: W 104.966140°)  
PDOP: 1.5

## Nearest:

Building: 425' NW  
Building Unit: 425' NW  
Above Ground Utility: 450' E  
Public Road: 500' E  
Railroad: +5280'  
Property Line: 263' NW  
Well Window: SHL is 58' inside  
Existing Well: Sullivan 44-26; 11' SE  
High Occupancy Building Unit: 3659 NW  
Designated Outside Activity Area: +5280

In accordance with a request from Jay Knutson of Crestone Peak Resources, Washburn Land Surveying, LLC has determined the location of the **Sullivan 4F-26H-P268** well site to be SHL: 566' FSL and 519' FEL, (TPZ: 480' FSL and 1375' FEL), (BHL: 2180' FSL and 1450' FEL), as measured at ninety (90) degrees from the section lines of Section 23 and Section 26, Township 2 North, Range 68 West of the 6th Principal Meridian, Weld County Colorado.

## Notes:

- 1) Bearings and distances based on NAD 83 Colorado North State Plane Coordinate, using RTK GPS observations taken 7/7/14 by operator Ryan Christi.
- 2) Conversion factor to ground (1.0002744738).
- 3) Elevations based on NAVD 88 GPS heights and Geoid 2009 corrections.
- 4) See Location Drawing for visible improvements within 500 feet of Pad Site.
- 5) The surface use is a cultivated field.

**NOTICE:** According to Colorado law you must commence any legal action based upon any defect in this W.L.C. within three years after you first discover such defect. In no event may any action based upon any defect in this W.L.C. be commenced more than ten years from this said date of the certification shown hereon.

I hereby certify that this Well Location Certificate was prepared by me or under my direct supervision on 7/16/2017 for and on behalf of Crestone Peak Resources. That it is not a Land Survey Plat or an Improvement Survey Plat and that it is not to be relied upon for establishment of fences, buildings, or other future improvement lines.

John Robert McGehee LSC#38219  
Well: Sullivan 4F-26H-P268 WLC