

LEGEND:

= 90° SYMBOL

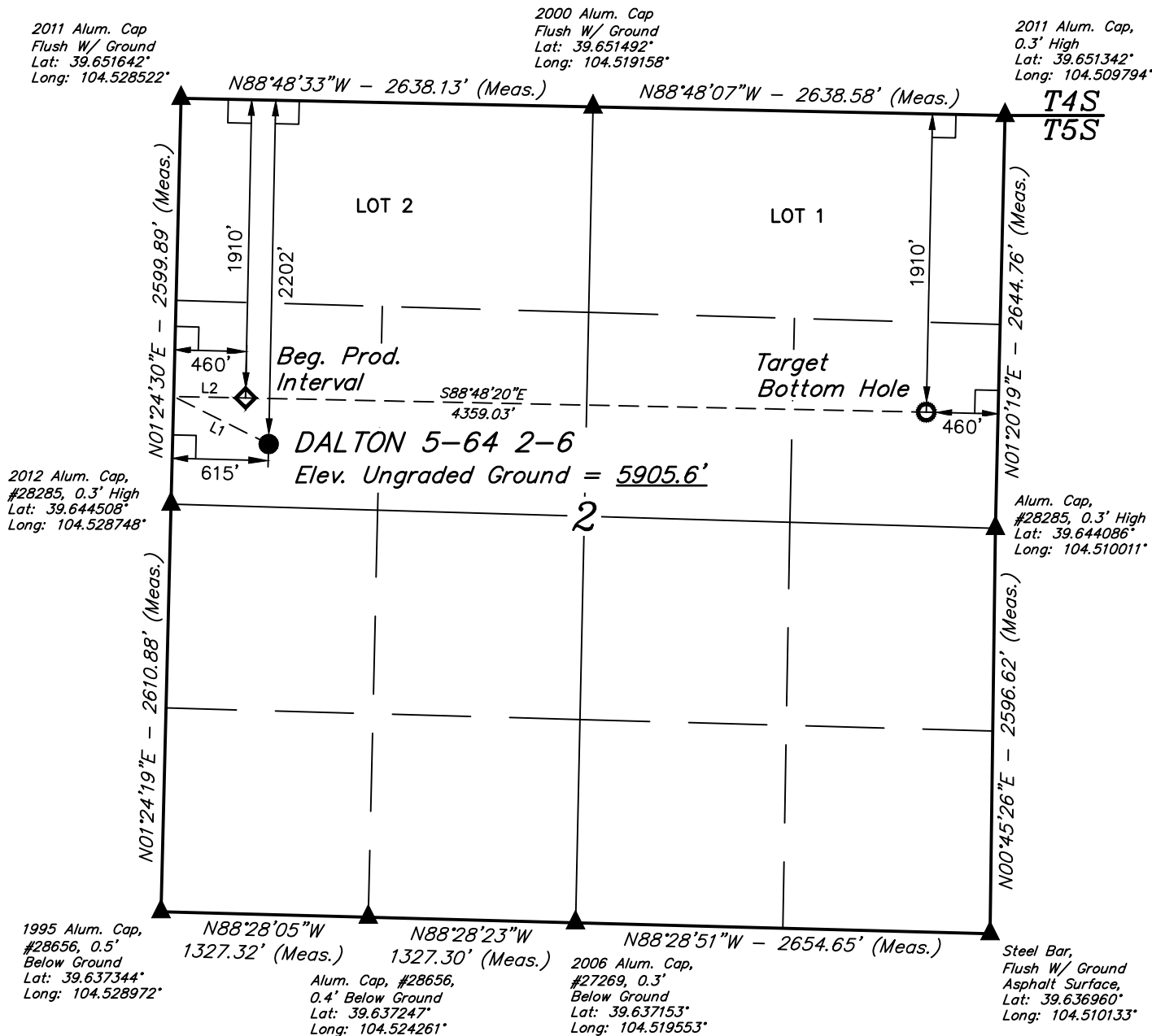
= PROPOSED WELLHEAD.

= PRODUCTION INTERVAL.

= TARGET BOTTOM HOLE.

= SECTION CORNERS LOCATED. (NAD 83)

T5S, R64W, 6th P.M.



LINE TABLE		
LINE	DIRECTION	LENGTH
L1	N63°21'18"W	679.89'
L2	S88°48'20"E	460.00'



PDOP = 1.2

SURFACE LOCATION 2202' FNL 615' FWL	BEG. PROD. INTERVAL 1910' FNL 460' FWL	TARGET BOTTOM HOLE 1910' FNL 460' FEL
NAD 83 (SURFACE LOCATION)	NAD 83 (BEG. PROD. INTERVAL)	NAD 83 (TARGET BOTTOM HOLE)
LATITUDE = 39°38'44.03" (39.645564)	LATITUDE = 39°38'46.95" (39.646375)	LATITUDE = 39°38'46.06" (39.646128)
LONGITUDE = 104°31'35.51" (104.526531)	LONGITUDE = 104°31'37.40" (104.527056)	LONGITUDE = 104°30'41.70" (104.511583)
NAD 27 (SURFACE LOCATION)	NAD 27 (BEG. PROD. INTERVAL)	NAD 27 (TARGET BOTTOM HOLE)
LATITUDE = 39°38'44.08" (39.645578)	LATITUDE = 39°38'47.00" (39.646389)	LATITUDE = 39°38'46.11" (39.646142)
LONGITUDE = 104°31'33.63" (104.526008)	LONGITUDE = 104°31'35.52" (104.526533)	LONGITUDE = 104°30'39.83" (104.511064)
STATE PLANE NAD 83 (CO. CENTRAL)	STATE PLANE NAD 83 (CO. CENTRAL)	STATE PLANE NAD 83 (CO. CENTRAL)
N: 1661494.05 E: 3274124.54	N: 1661787.64 E: 3273973.56	N: 1661744.66 E: 3278331.07
STATE PLANE NAD 27 (CO. CENTRAL)	STATE PLANE NAD 27 (CO. CENTRAL)	STATE PLANE NAD 27 (CO. CENTRAL)
N: 661487.36 E: 2274278.27	N: 661780.94 E: 2274127.30	N: 661738.04 E: 2278484.78

CERTIFICATE OF REGISTRATION

THIS IS TO CERTIFY THAT THE ABOVE AND WAS PREPARED FROM FIELD NOTES OF ACTUAL SURVEYS MADE BY ME OR UNDER MY SUPERVISION, AND THAT THE SAME ARE TRUE AND CORRECT TO THE BEST OF MY KNOWLEDGE AND BELIEF.

RECORDED LAND SURVEYOR

REGISTRATION NO. 28285

STATE OF COLORADO

BASIS OF BEARINGS

BASIS OF BEARINGS IS A G.P.S. OBSERVATION

BASIS OF ELEVATION

BENCHMARK 374 LOCATED ON THE SECTION LINE BETWEEN SECTIONS 12 & 13, T5S, R64W, 6th. P.M., TAKEN FROM 1988 PUBLISHED DATUM BY THE UNITED STATES DEPARTMENT OF THE INTERIOR, GEOLOGICAL SURVEY AS BEING 6054.61 FEET.

UELS, LLC

Corporate Office * 85 South 200 East

Vernal, UT 84078 * (435) 789-1017

BISON EXPLORATION

DALTON 5-64 2-6

SW 1/4 NW 1/4, SECTION 2, T5S, R64W, 6th P.M.

ARAPAHOE COUNTY, COLORADO

SURVEYED BY	JARED CHRISTOPHER, G.W.	04-05-17	SCALE
DRAWN BY	C.C.	04-12-17	1" = 1000'

WELL LOCATION PLAT