

OPERATOR: **Extraction Oil & Gas**

WELL NAME: **Kiteley 9 ST1**

FIELD NAME: DJ Basin - Wattenberg

DRILLING RIG: Cyclone 37

API #: 05-123-43922

LAT/LONG: 40.207742, -105.015022

SURFACE HOLE: NWSW S21-T3N-R68W, 1369' FSL, 637' FWL

BOTTOM HOLE: S21-T3N-R68W, 575' FSL, 460' FEL

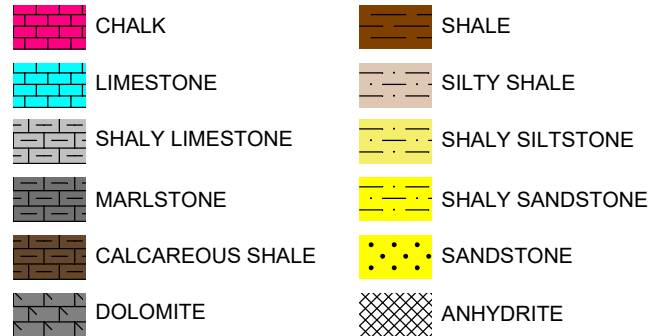


Earth Science Agency, LLC

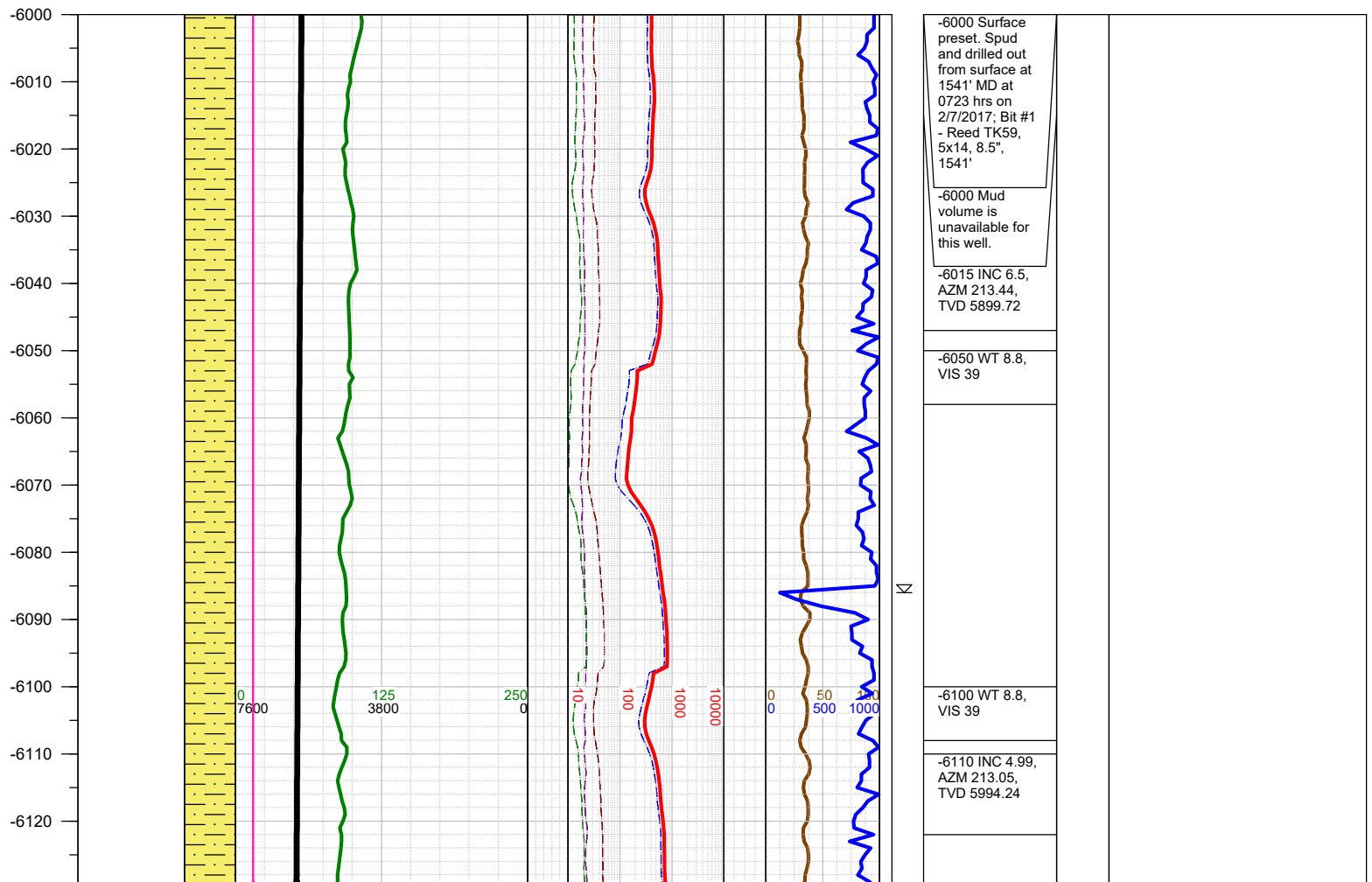
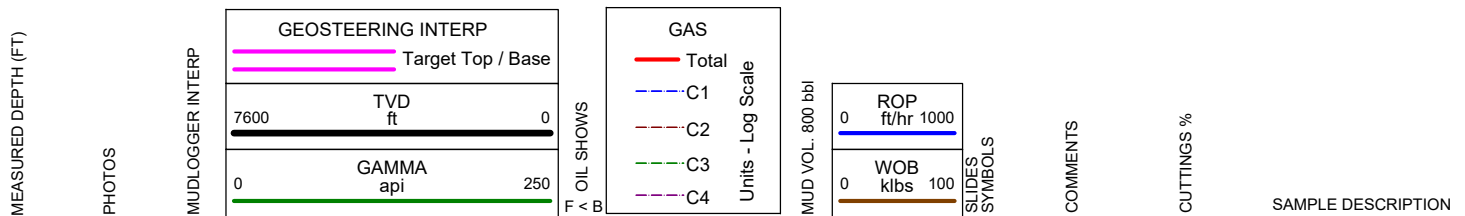
COUNTY: Weld
STATE: Colorado
GROUND ELEVATION: 4988'
KELLY BUSHING: 5016'
DRILLING FLUID: OBM
TVD VS. MD: 7305' / 11693'
SPUD DATE: February 7, 2017
TD DATE: February 10, 2017

DEPTHS LOGGED: 6000' - 11693'
DATES LOGGED: February 7, 2017 - February 10, 2017
GEOLOGISTS: Blue Spikes, Nick Watkins
SCALE: 5" = 100'

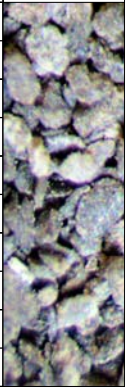
LEGEND



FORMATION CONNECTION MIDNIGHT NEW BIT GAS SHOW FAULT



-6130
-6140
-6150
-6160
-6170
-6180
-6190
-6200
-6210
-6220
-6230
-6240
-6250
-6260
-6270
-6280
-6290
-6300
-6310
-6320
-6330
-6340
-6350
-6360
-6370
-6380
-6390



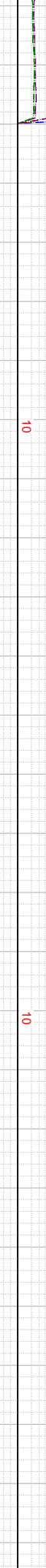
0
7600



125
3800



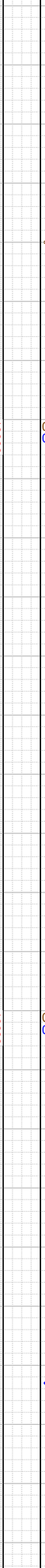
250
0



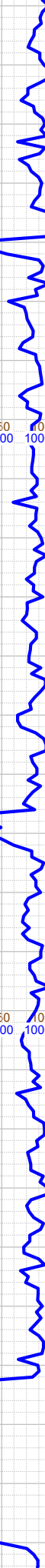
10
100



1000
10000



0
0



50
100

Σ

Σ

Σ

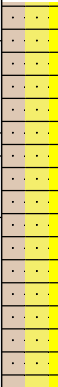
-6150 C1-C4
gas and
wetness data
unavailable
through 8927'.

-6205 INC 3.49,
AZM 214.24,
TVD 6088.98

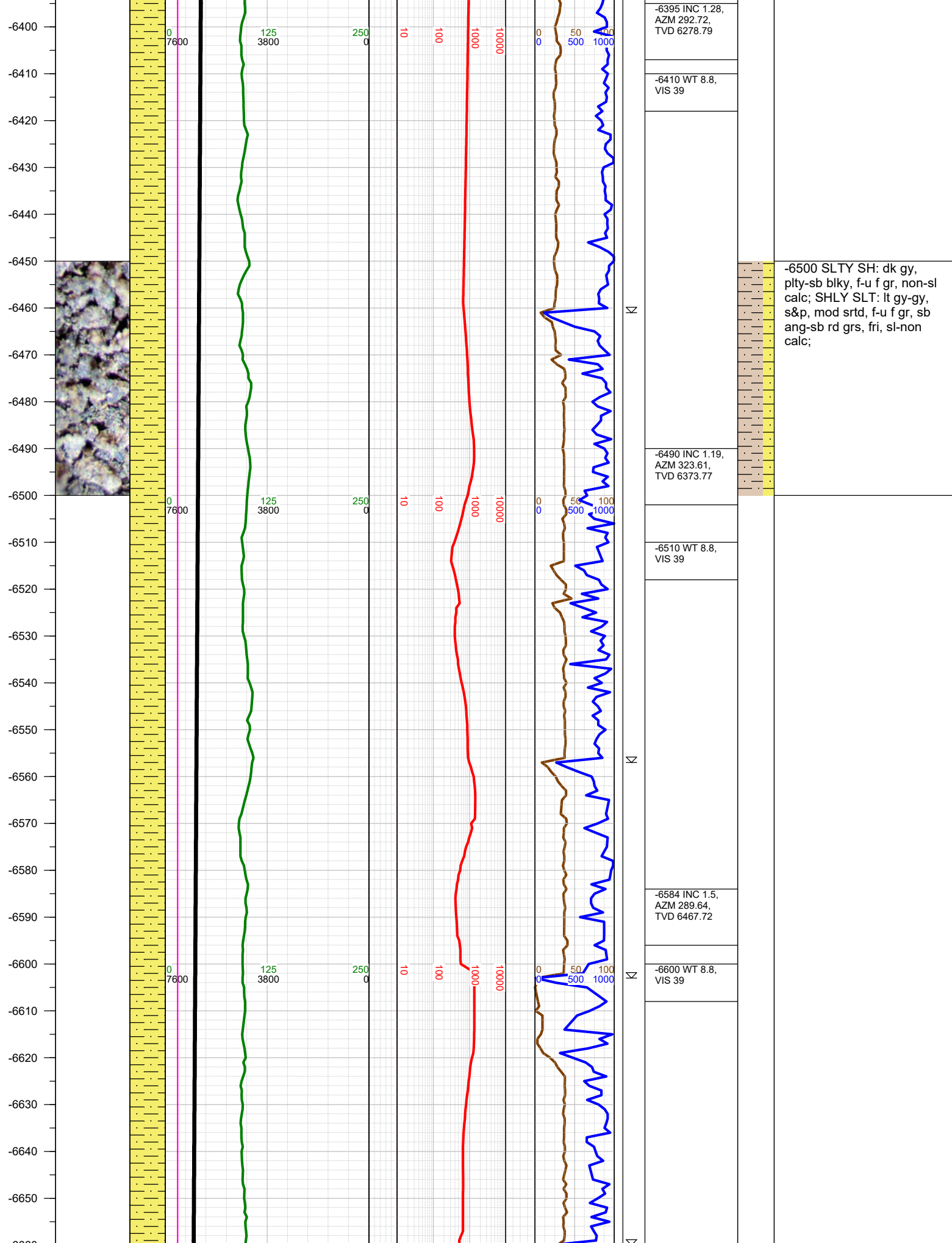
-6220 WT 8.8,
VIS 39

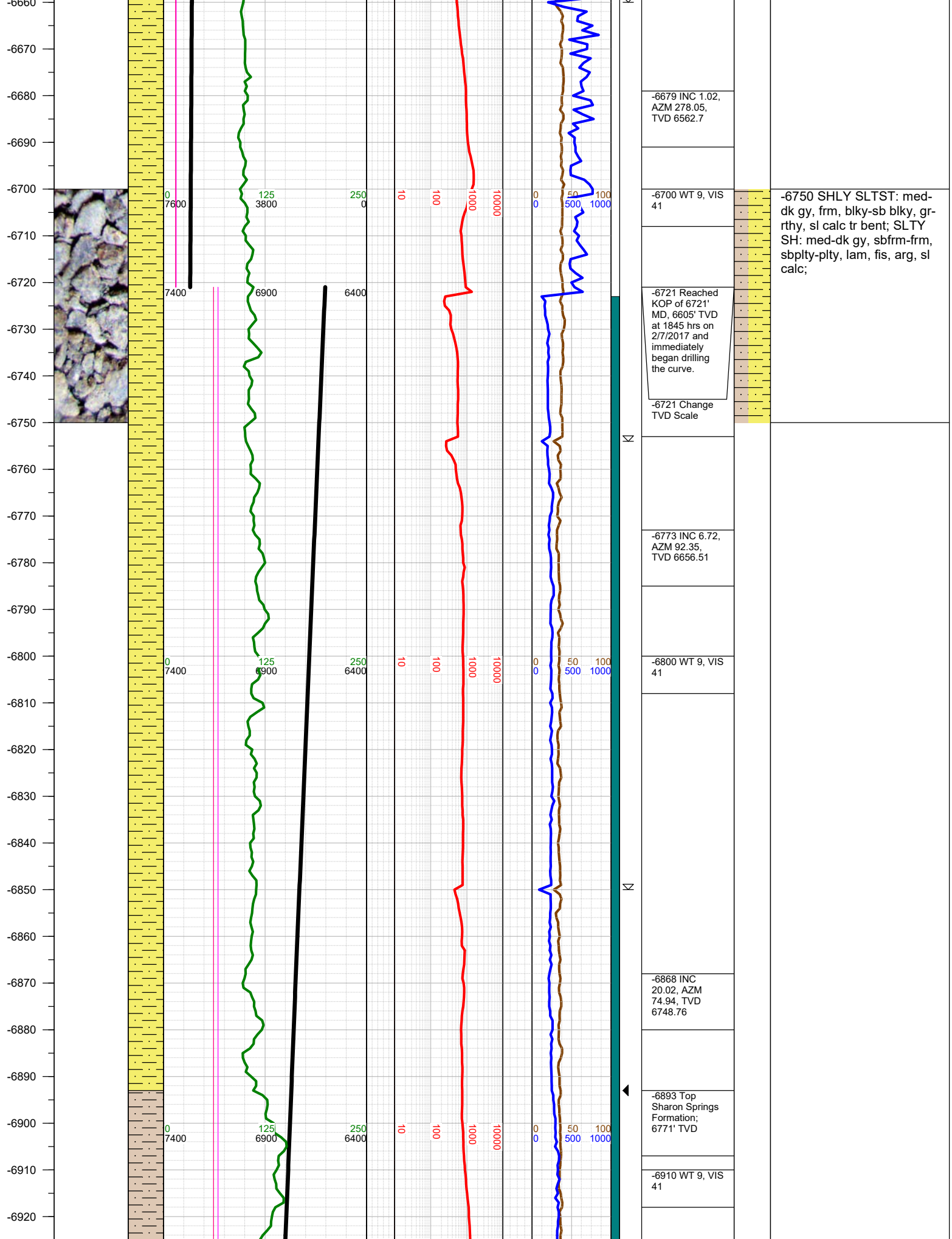
-6301 INC 2.78,
AZM 213.93,
TVD 6184.84

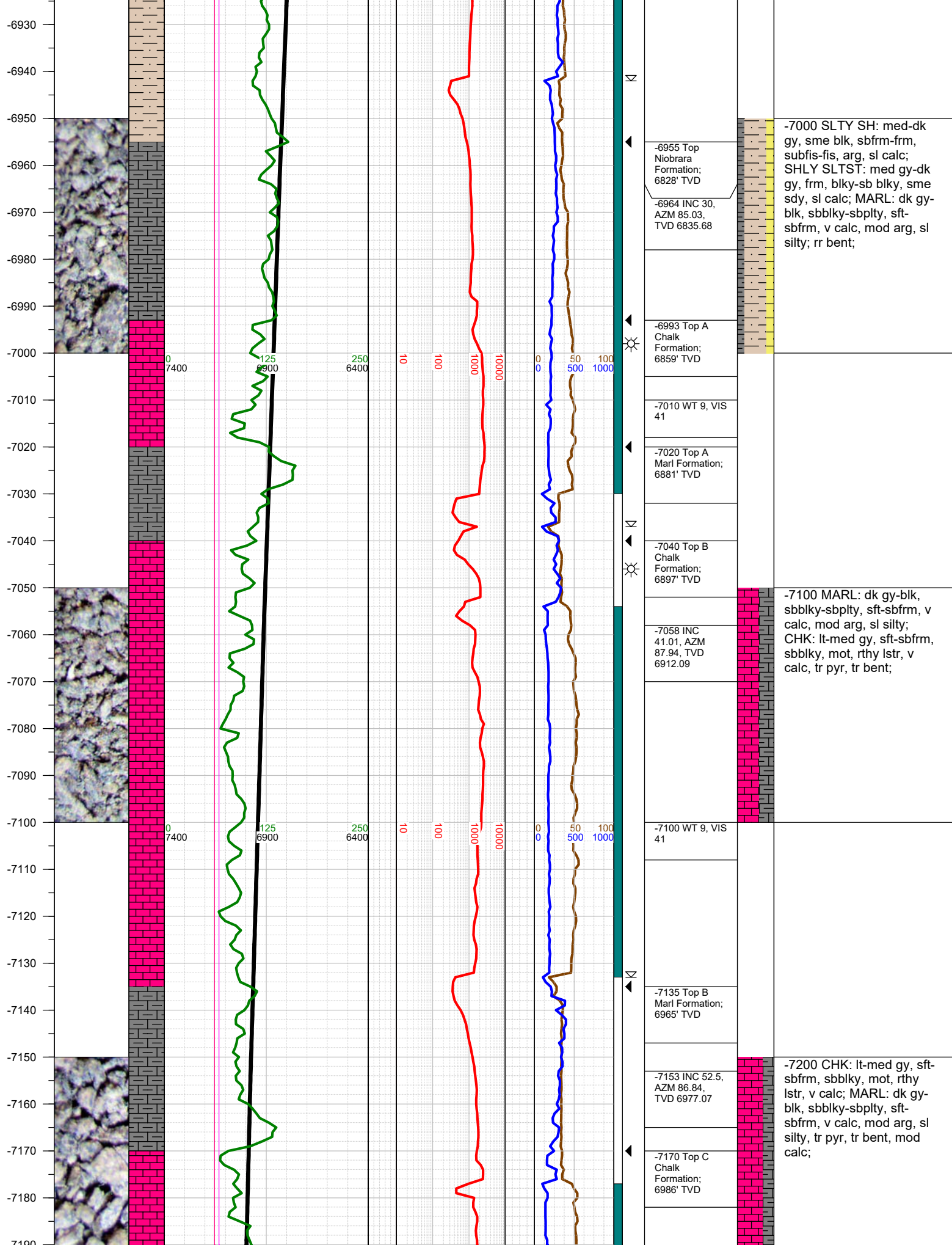
-6320 WT 8.8,
VIS 39

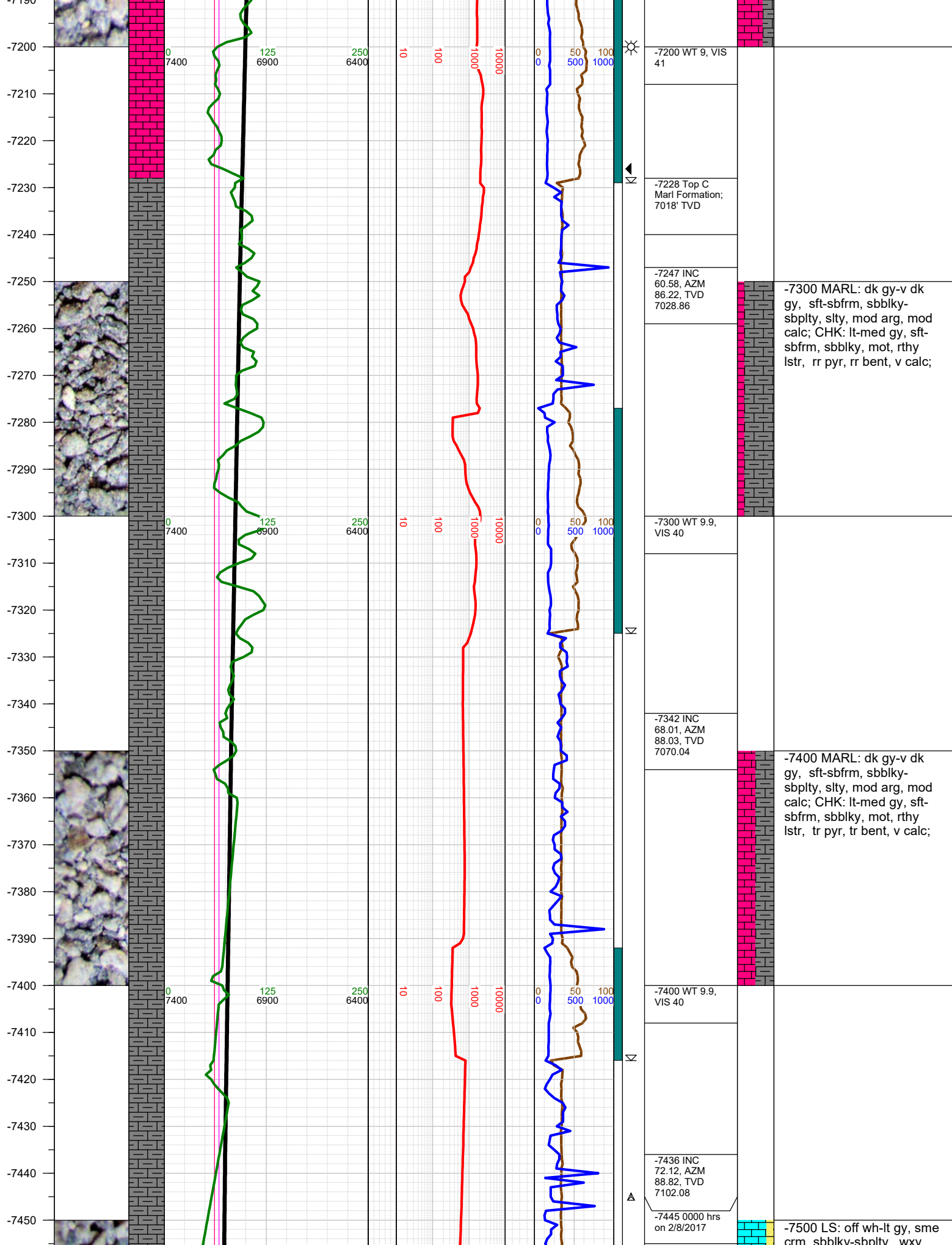


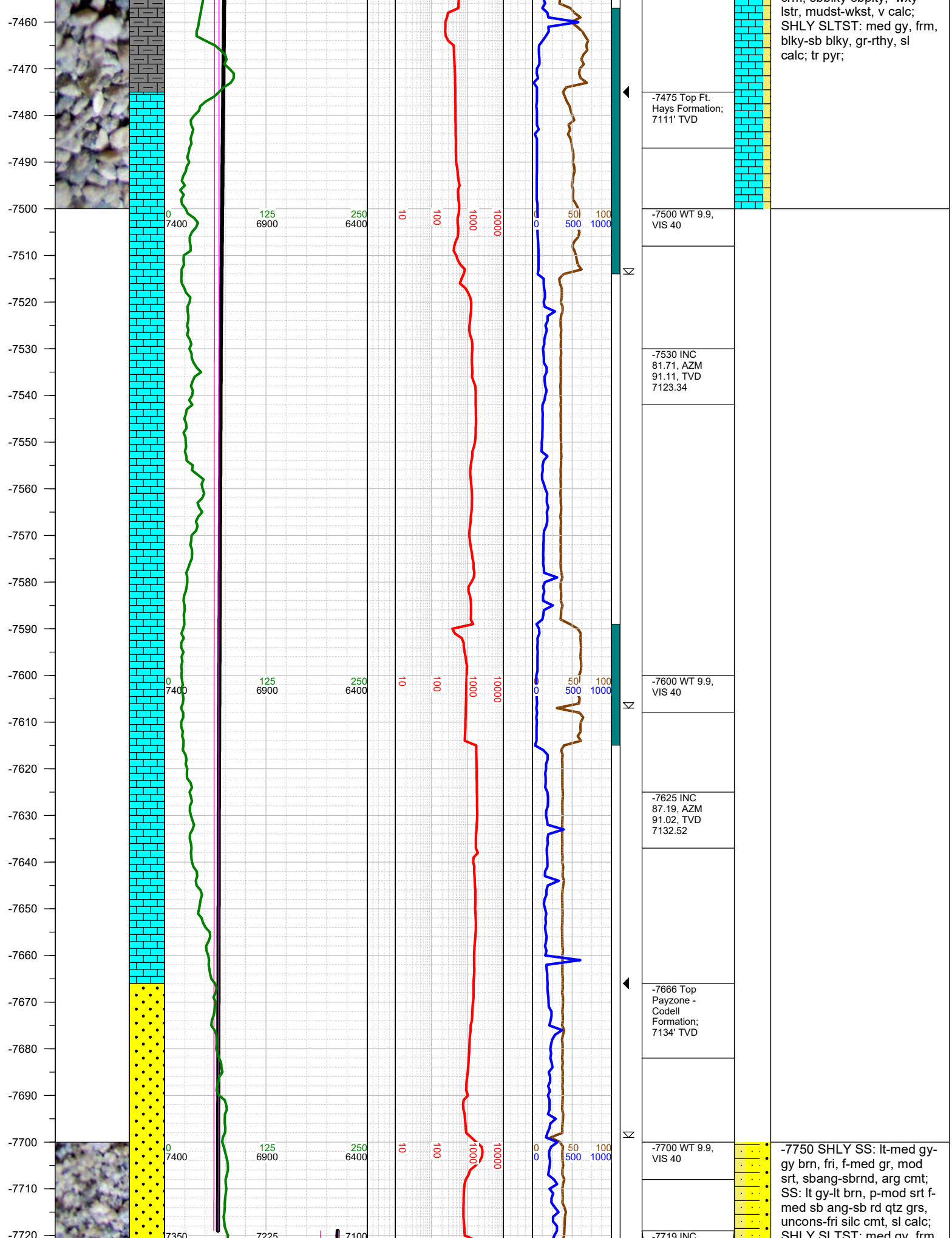
-6250 SLTY SH: dk gy,
plty-sb blkly, f-gt tex, sme
SS intbds, sl calc; SHLY
SLT: lt gy-gy, s&p, mod
srted, f-u f gr, sb ang-sb rd
grs, fri, sl calc; SHLY SS:
lt-med gy, f gr, w srted,
predly subang-sbrnd, sl-l
calc;

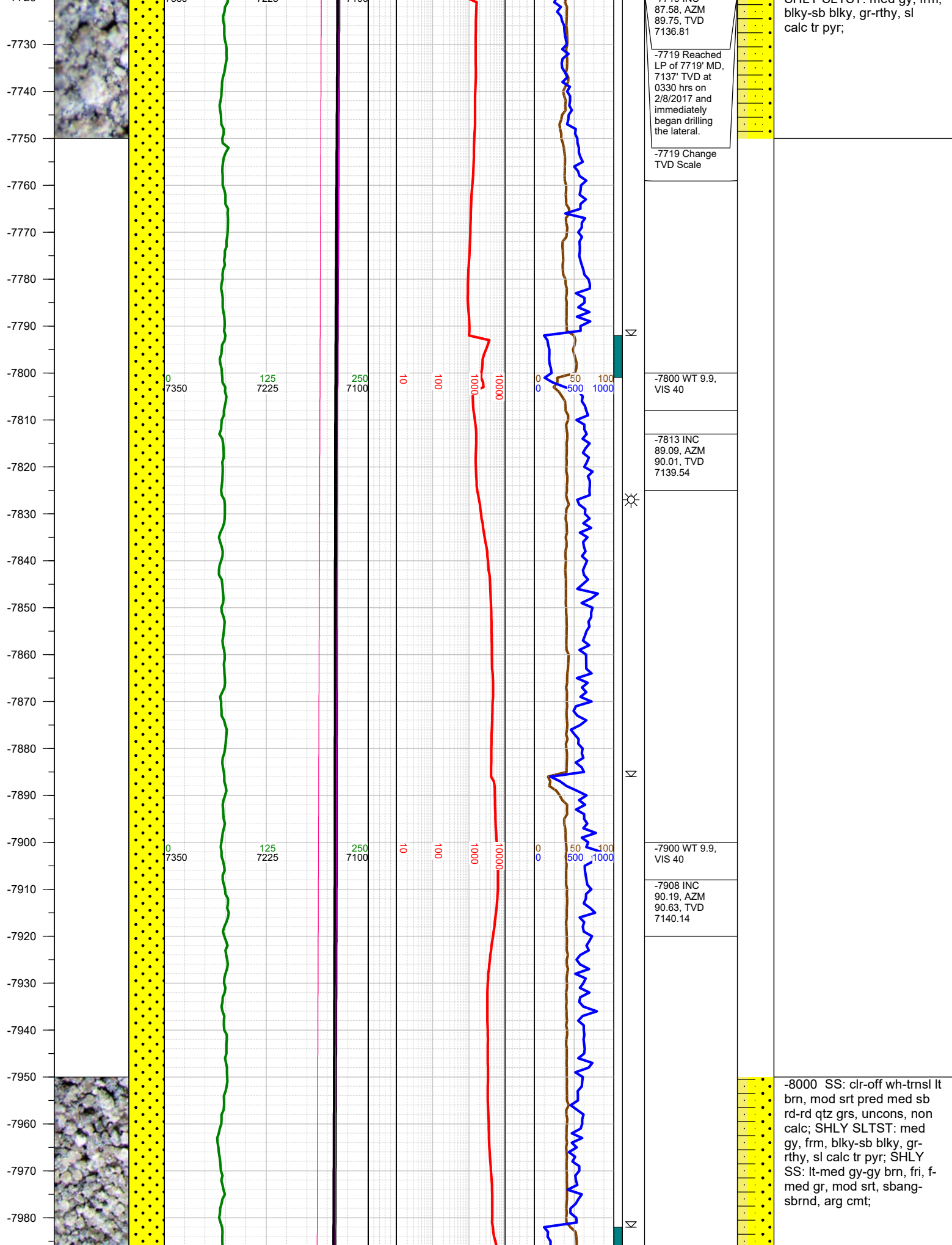


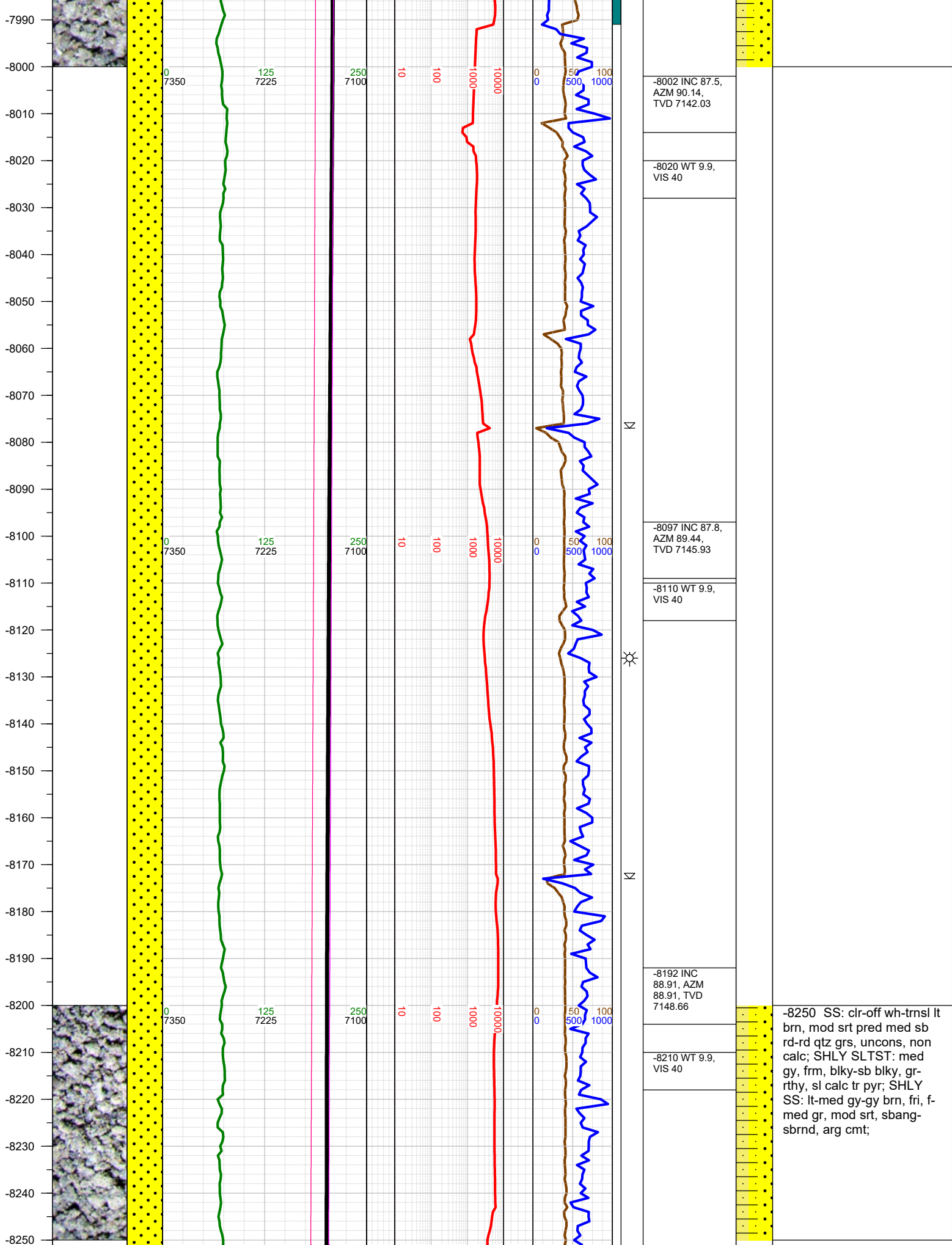


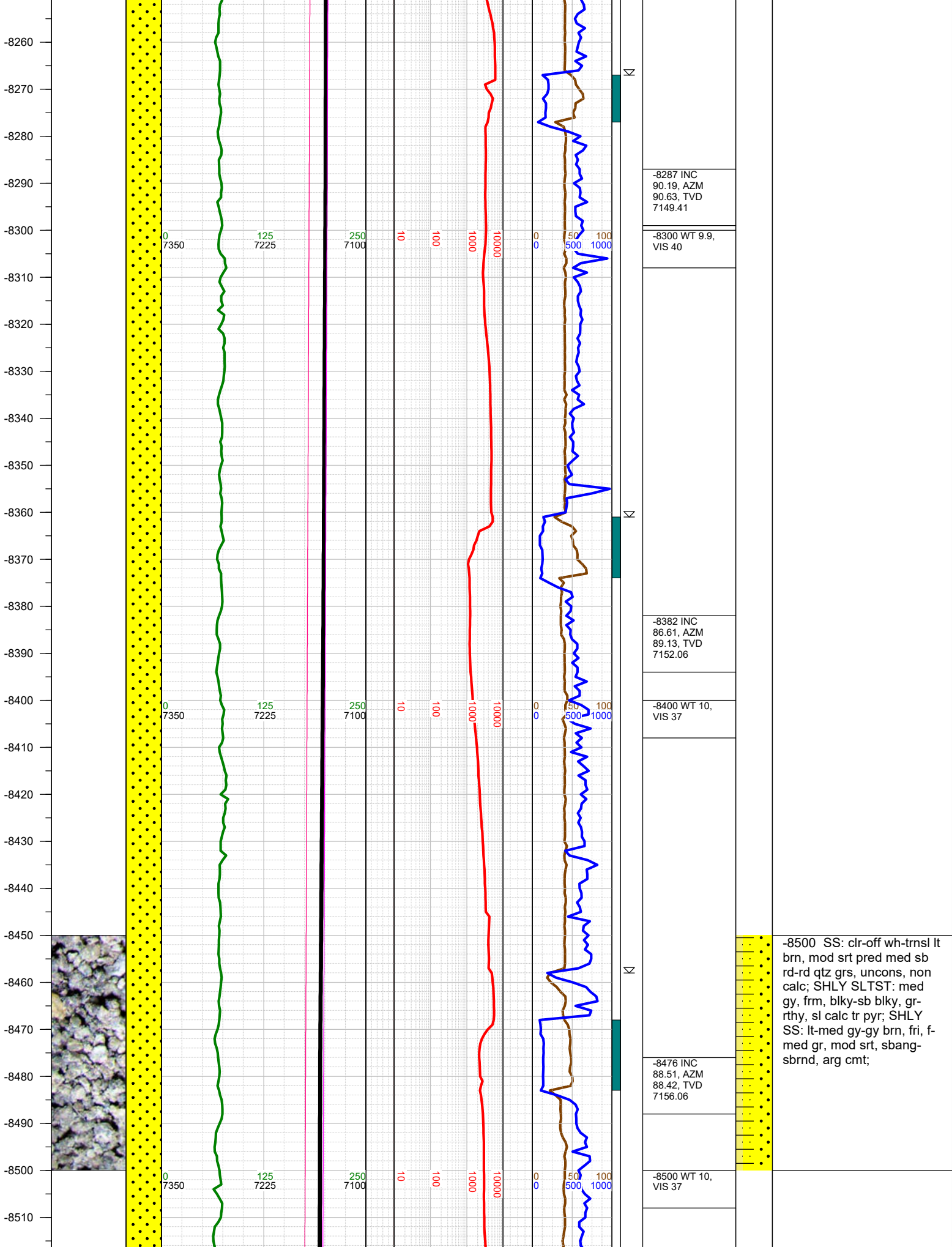




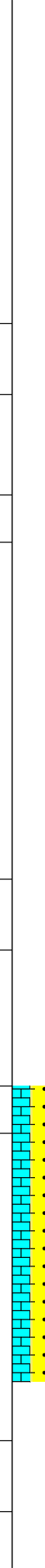
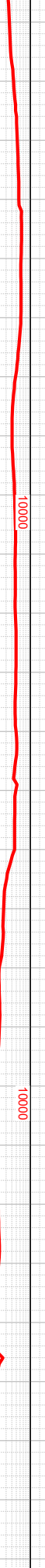
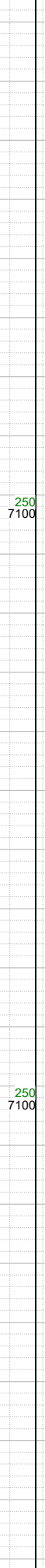
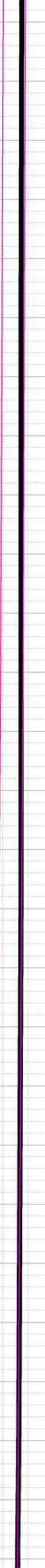
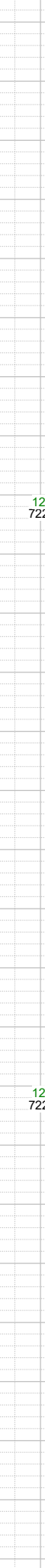
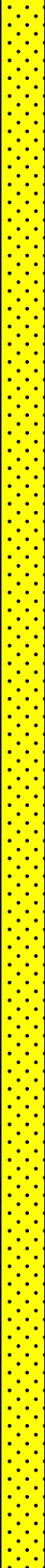
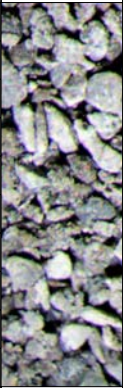








-8520
-8530
-8540
-8550
-8560
-8570
-8580
-8590
-8600
-8610
-8620
-8630
-8640
-8650
-8660
-8670
-8680
-8690
-8700
-8710
-8720
-8730
-8740
-8750
-8760
-8770
-8780



-8571 INC
90.01, AZM
89.13, TVD
7157.29

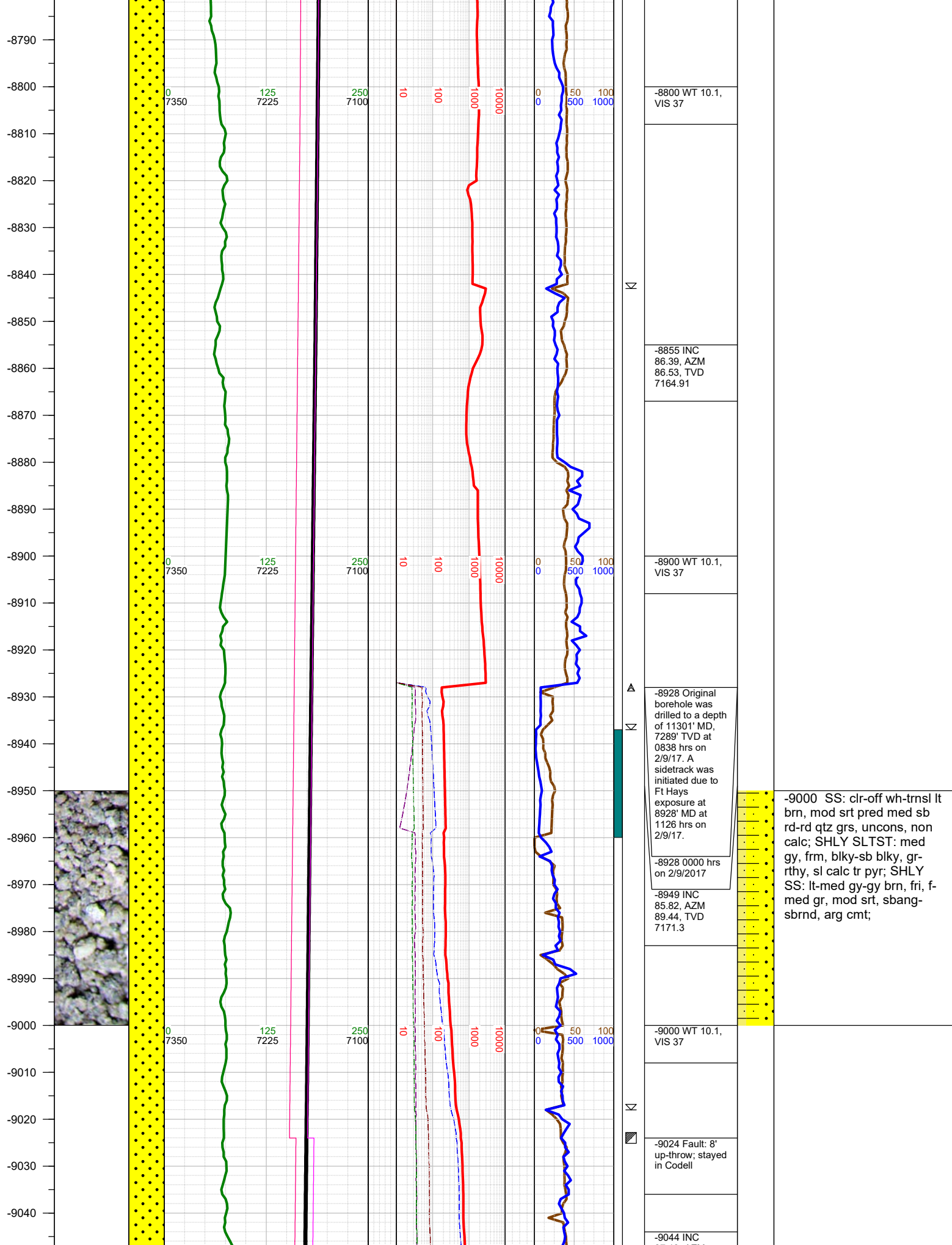
-8600 WT 10,
VIS 37

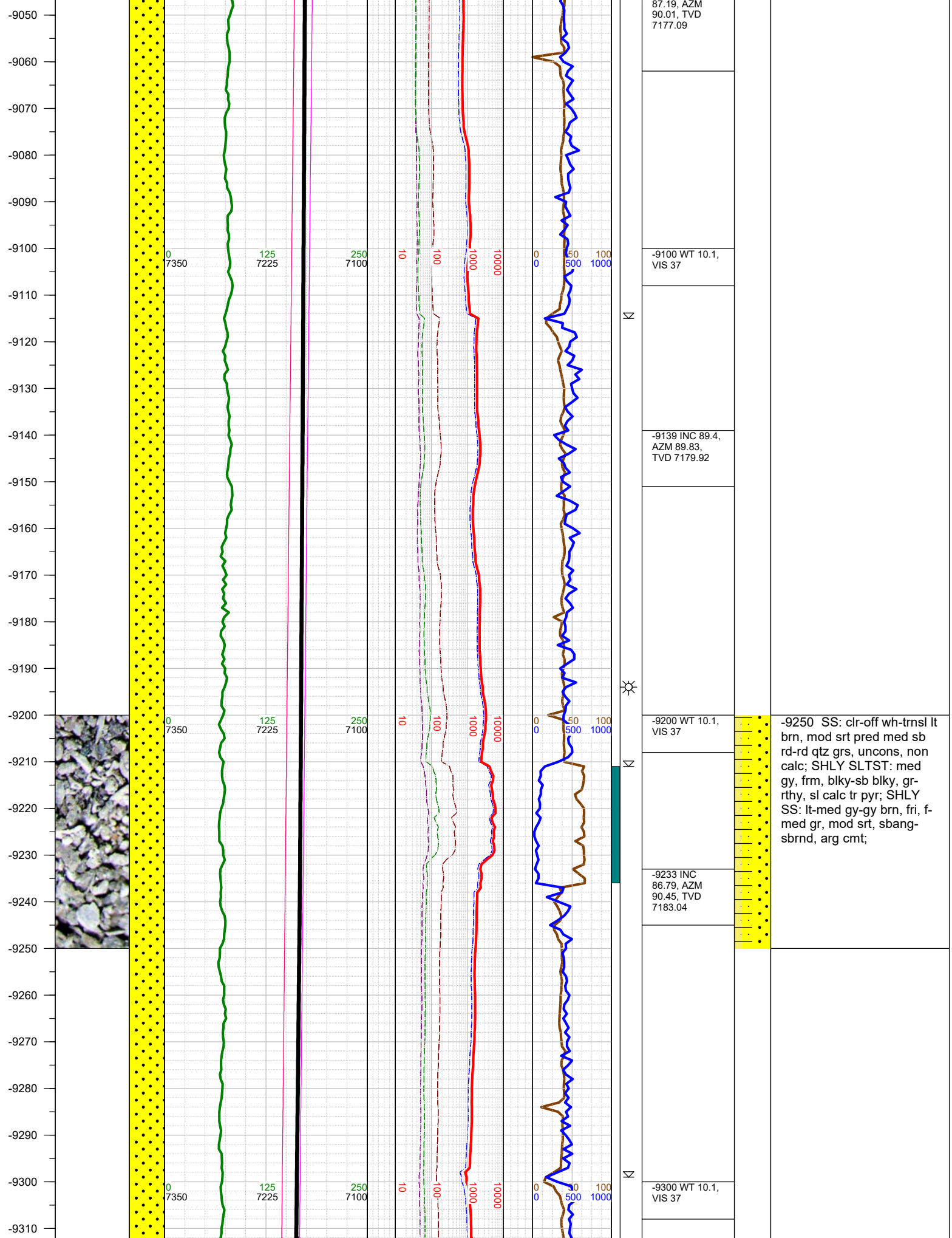
-8665 INC
90.01, AZM
88.34, TVD
7157.27

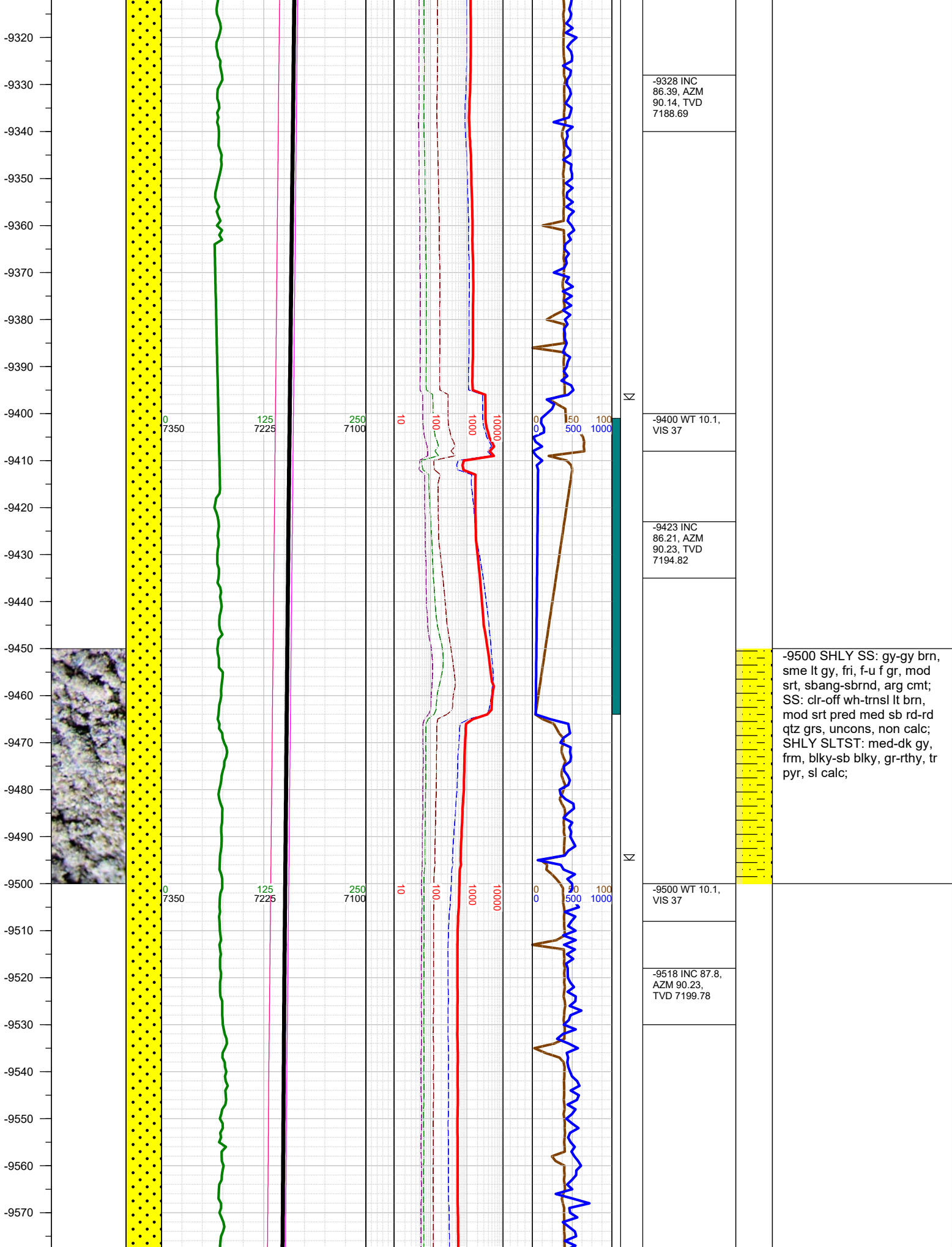
-8700 WT 10.1,
VIS 37

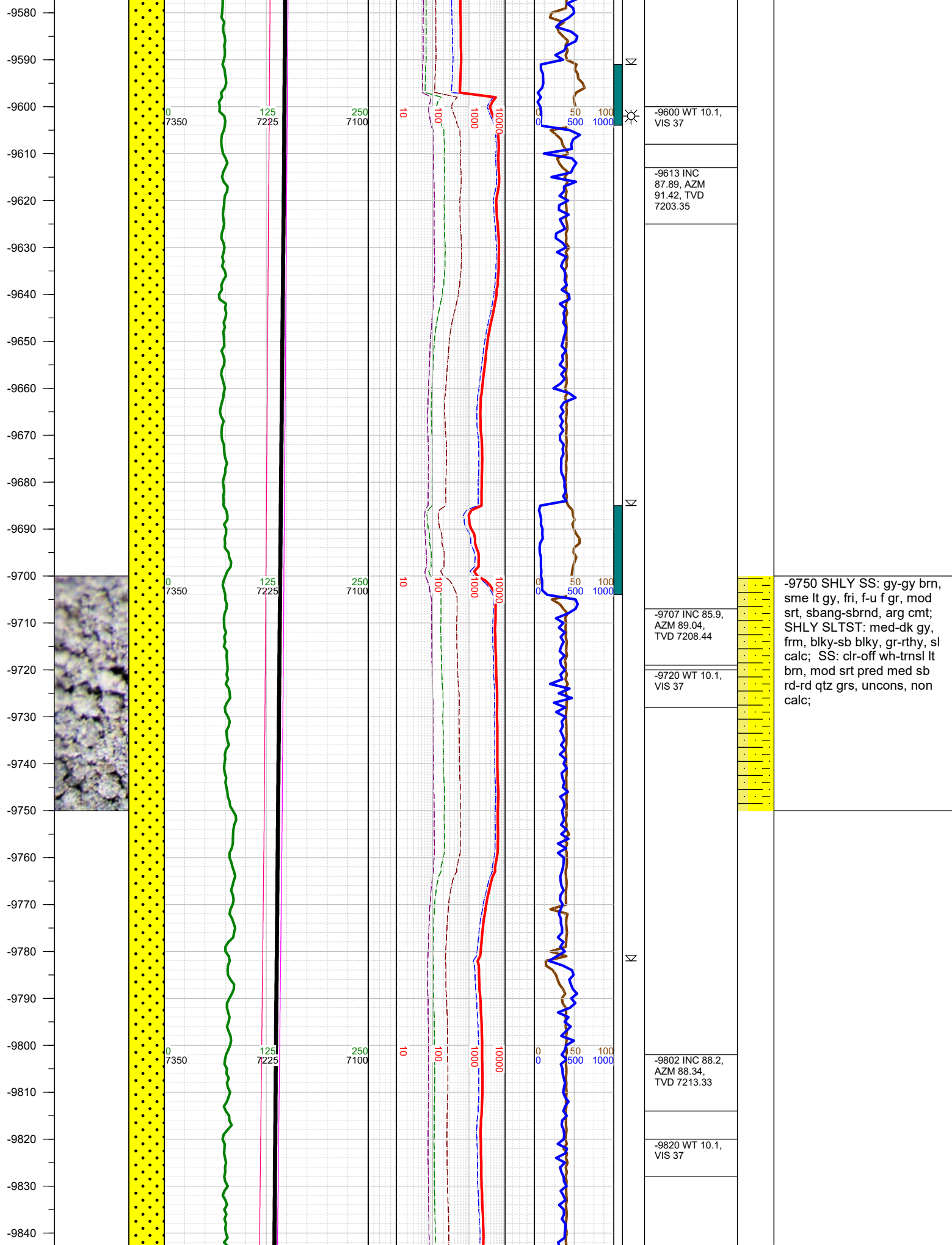
-8760 INC
87.19, AZM
87.85, TVD
7159.59

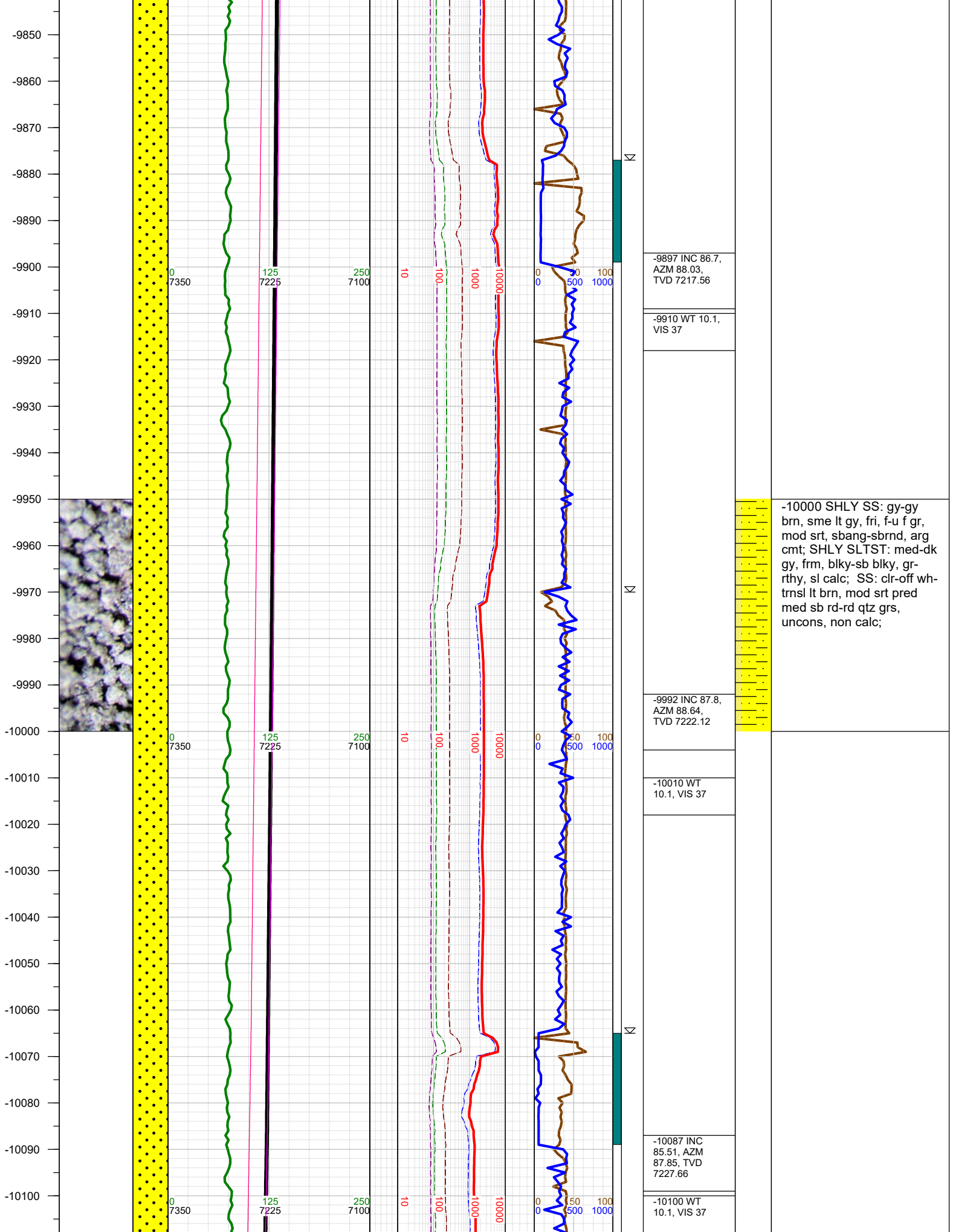
-8750 SS: clr-off wh-trnsl lt
brn, mod srt pred med sb
rd-rd qtz grs, unconsl, non
calc; LS: off wh-lt gy, sme
crm, sbblky-sbplty, wxy
lstr, mudst-wkst, v calc;
SHLY SLTST: med gy, frm,
blky-sb blky, gr-rthy, sl
calc tr pyr; SHLY SS: lt-
med gy-gy brn, fri, f-med
gr, mod srt, sbang-sbrnd,
arg cmt;



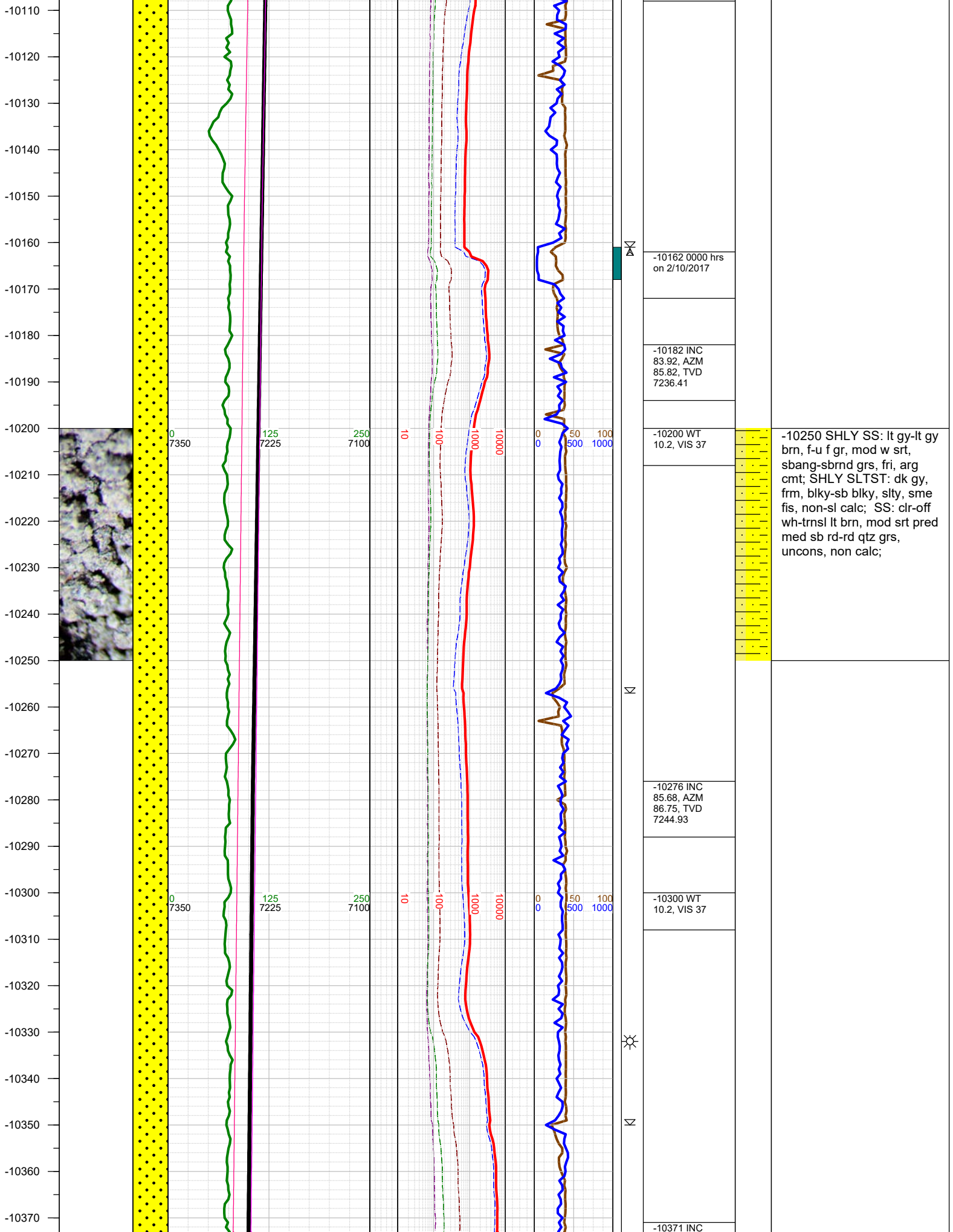


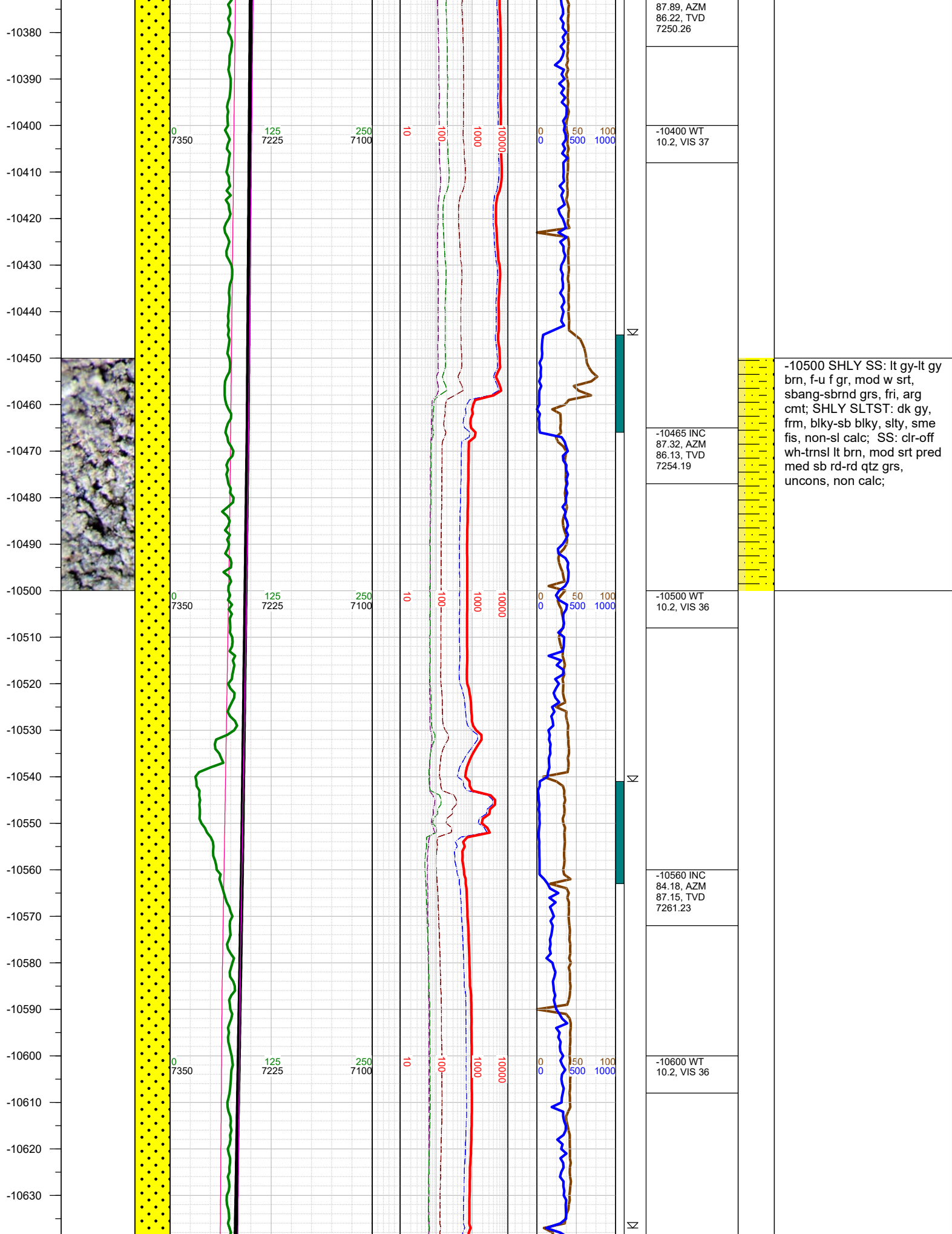


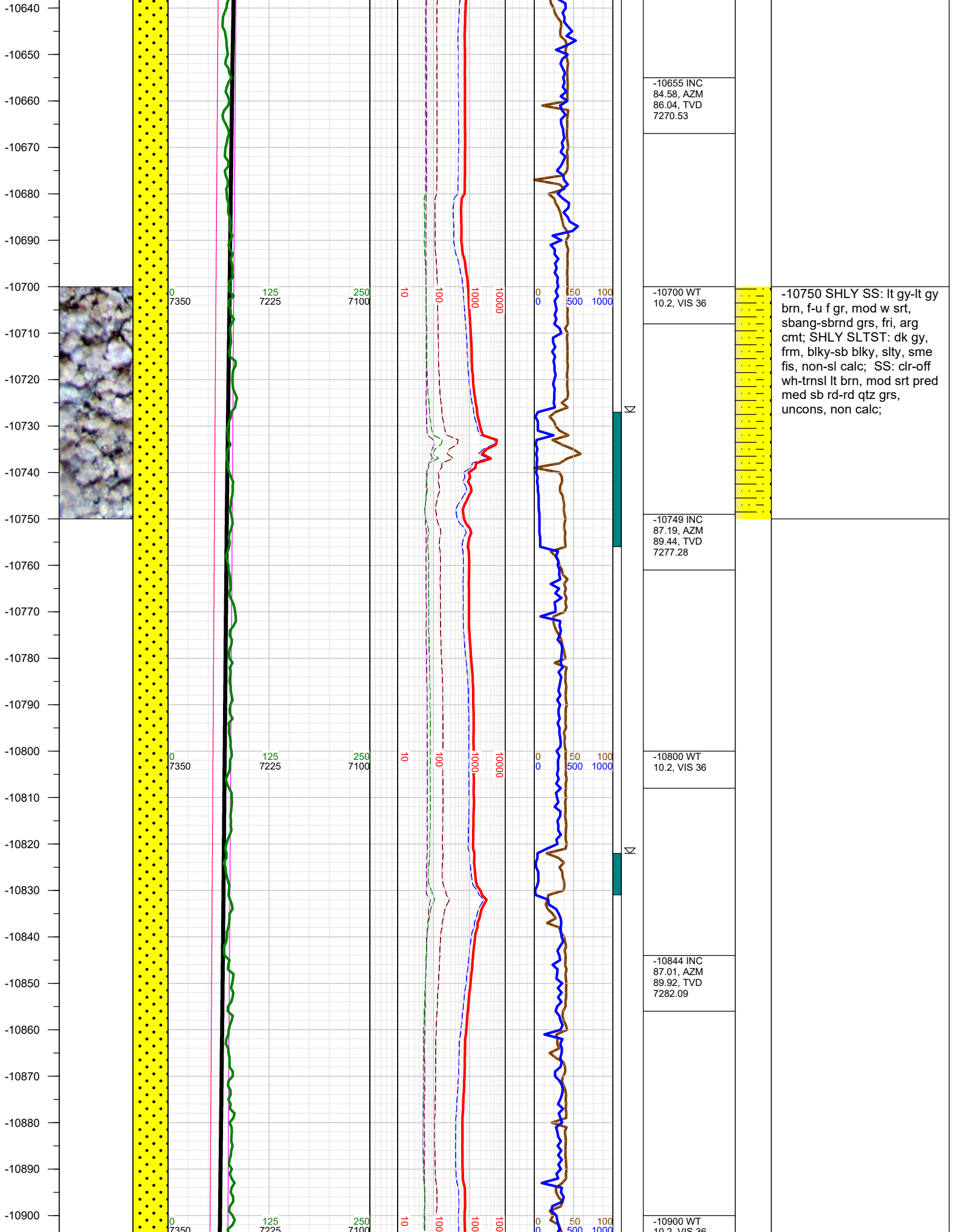




-10000 SHLY SS: gy-gy
brn, sme lt gy, fri, f-u f gr,
mod srt, sbang-sbrnd, arg
cmt; SHLY SLTST: med-dk
gy, frm, blk-y-sb blk-y, gr-
rthy, sl calc; SS: clr-off wh-
trnsl lt brn, mod srt pred
med sb rd-rd qtz grs,
uncons, non calc;

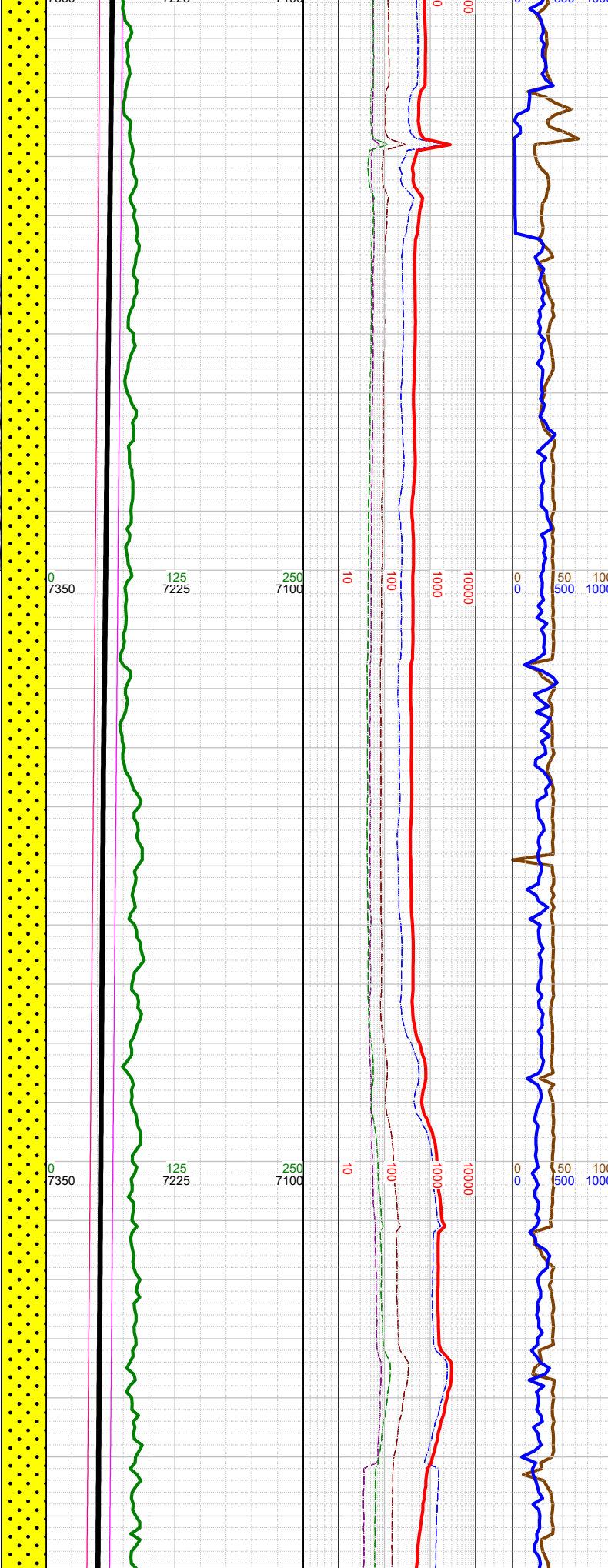
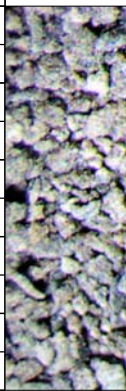






-10750 SHLY SS: lt gy-lt gy
brn, f-u f gr, mod w srt,
sbang-sbrnd grs, fri, arg
cmt; SHLY SLTST: dk gy,
frm, blk-y-sb blk-y, slty, sme
fis, non-sl calc; SS: clr-off
wh-trnsl lt brn, mod srt pred
med sb rd-rd qtz grs,
uncons, non calc;

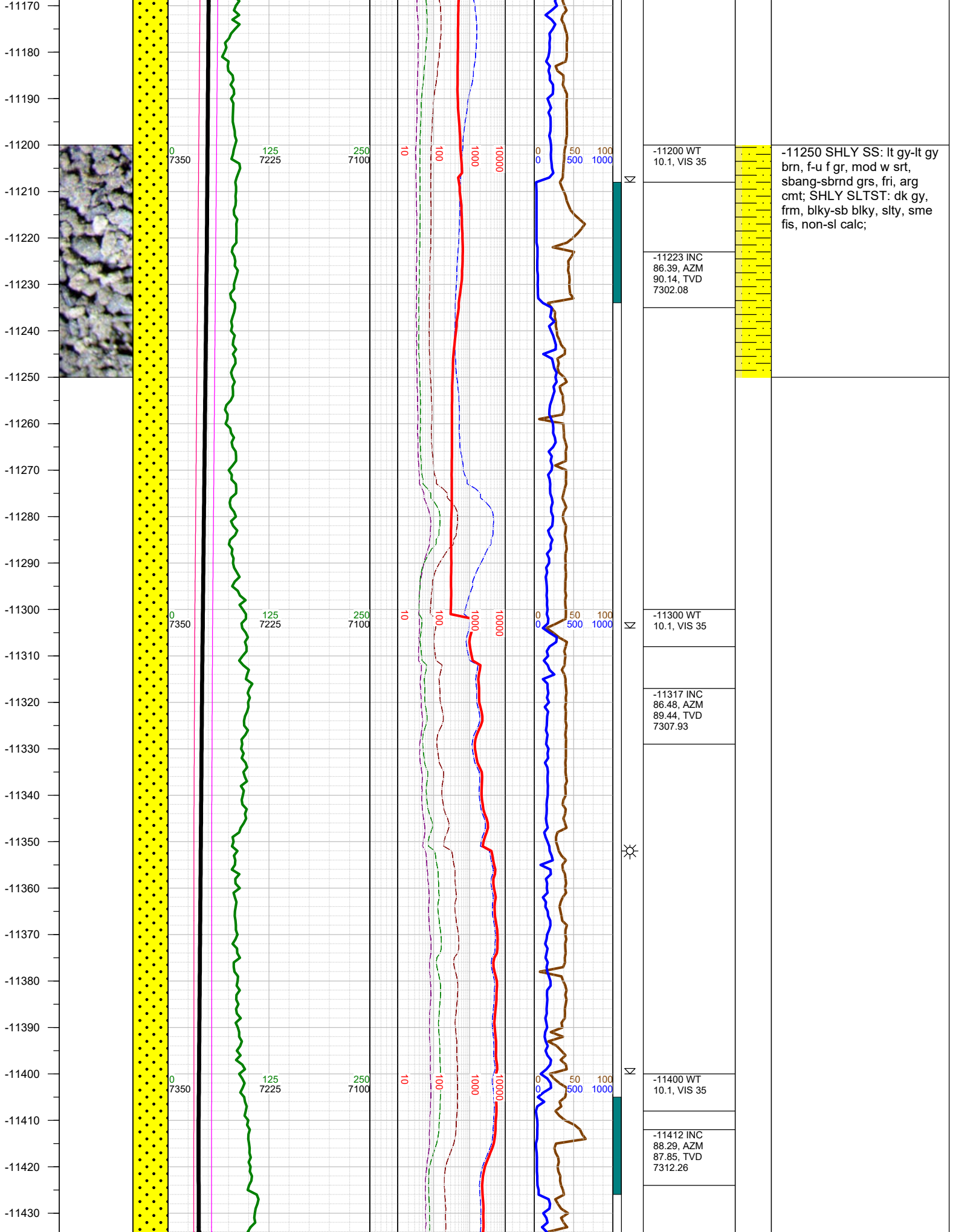
-10910
-10920
-10930
-10940
-10950
-10960
-10970
-10980
-10990
-11000
-11010
-11020
-11030
-11040
-11050
-11060
-11070
-11080
-11090
-11100
-11110
-11120
-11130
-11140
-11150
-11160



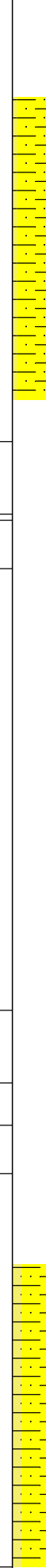
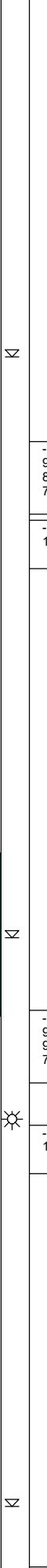
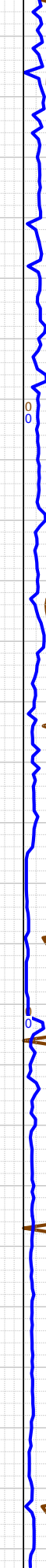
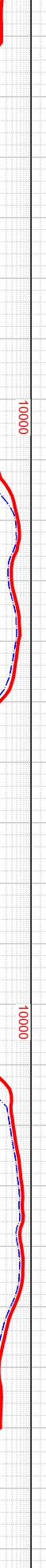
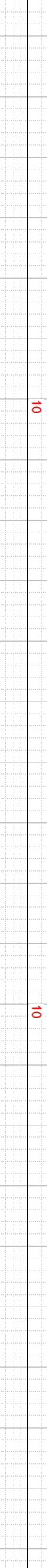
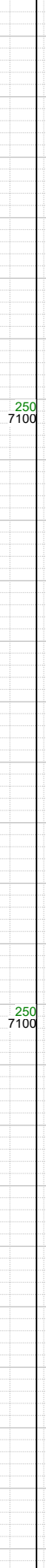
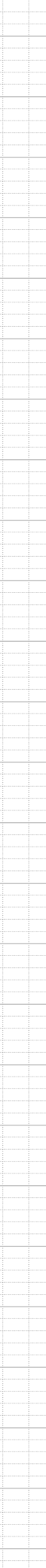
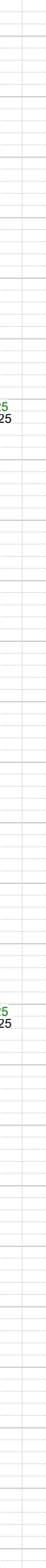
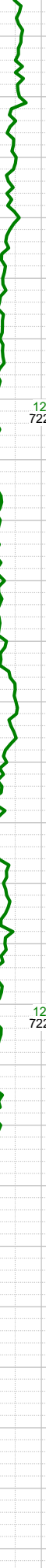
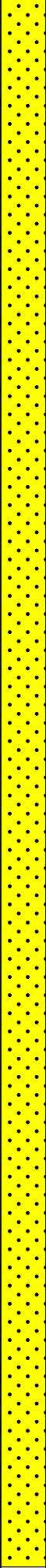
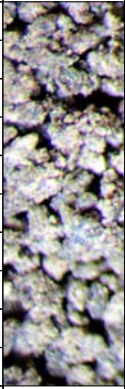
10.2, VIS 35	
	-10939 INC 85.68, AZM 91.33, TVD 7288.15
-11000 WT 10.1, VIS 35	
	-11033 INC 86.7, AZM 91.11, TVD 7294.4
	-11100 WT 10.1, VIS 35
-11128 INC 88.82, AZM 91.64, TVD 7298.11	



-11000 SHLY SS: lt gy-lt gy
brn, f-u f gr, mod w srt,
sbang-sbrnd grs, fri, arg
cmt; SHLY SLTST: dk gy,
frm, blk-y-sb blk-y, slty, sme
fis, non-sl calc;



-11440
-11450
-11460
-11470
-11480
-11490
-11500
-11510
-11520
-11530
-11540
-11550
-11560
-11570
-11580
-11590
-11600
-11610
-11620
-11630
-11640
-11650
-11660
-11670
-11680
-11690



-11500 SHLY SS: lt gy-lt gy
brn, f-u f gr, mod w srt,
sbang-sbrnd grs, fri, arg
cmt; SHLY SLTST: dk gy,
frm, blk-y-sb blk-y, slty, sme
fis, non-sl calc;

-11507 INC
92.8, AZM
88.03, TVD
7311.36

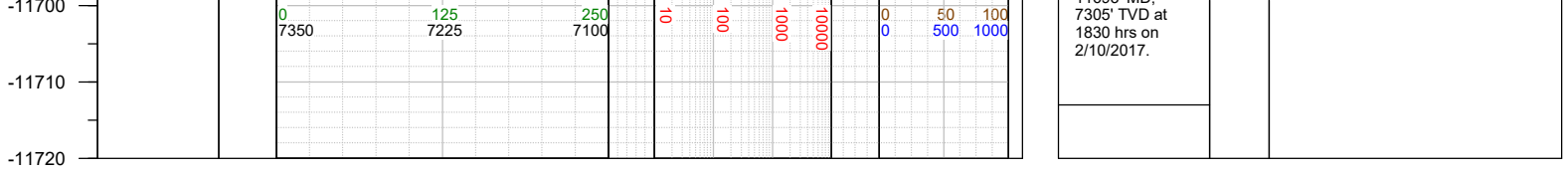
-11520 WT
10.1, VIS 35

-11601 INC
91.6, AZM
90.63, TVD
7307.75

-11620 WT
10.1, VIS 36

-11693 Reached
horizontal TD of
11693' MD

-11693 SHLY SS: lt gy-gy,
pred f gr, sme u f gr, mod
w srt, sbang-sbrnd grs, fri,
arg cmt; SHLY SLTST: dk
gy, frm, blk-y-sb blk-y, slty,
sme fis, non-sl calc;



TOTAL DEPTH = 11693'

Thank you for using Earth Science Agency