

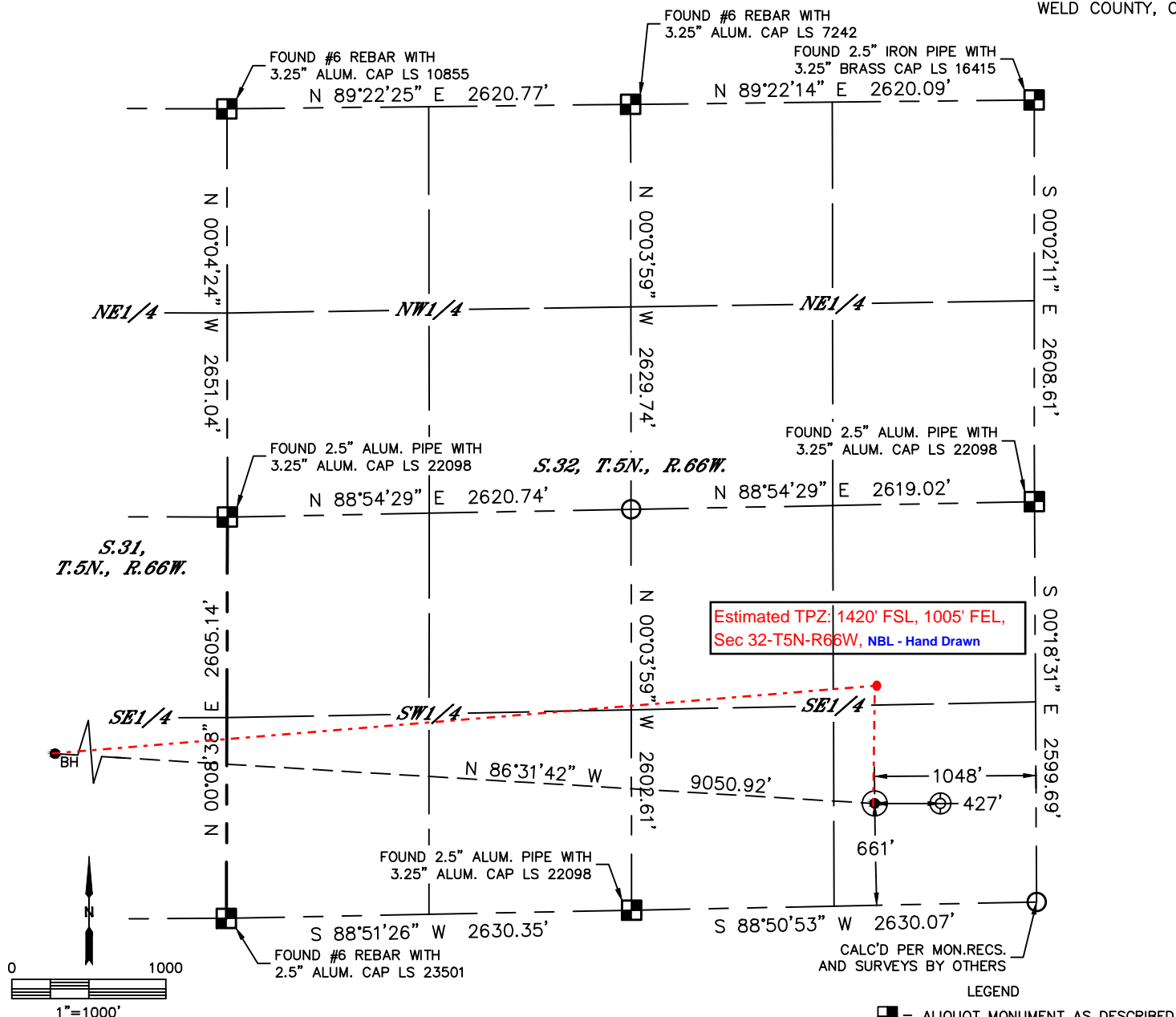


Lat40°, Inc. 6250 W. 10th Street, Unit 2, Greeley, CO 970-515-5294

WELL LOCATION CERTIFICATE

FAIRWEATHER J31-630

SECTION: 32
TOWNSHIP: 5N
RANGE: 66W
6TH. P.M.
WELD COUNTY, CO



CLIENT: NOBLE ENERGY, INC.				LANDMAN: NICK HAFFNER			
INSTRUMENT OPERATOR: BRIAN ROTTINGHAUS				SURVEY DATE: 12/9/2016		SURFACE USE: RANGELAND	
SHL FOOTAGE	SHL LAT°	SHL LONG°	SHL PDOP	SHL ELEV (FT.)	SHL 1/4/1/4	SHL S-T-R	
661	FSL	1048	FEL	40.35073	-104.79795	1.3	4758

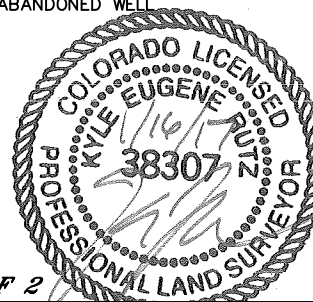
BHL FOOTAGE	BHL LAT°	BHL LONG°	BHL S-T-R
1320	FSL	460	FWL
40.35243	-104.83034	31-5-66	

NEAREST EXISTING WELL IN SHL 1/4/1/4	
EXISTING SPOMER 32-16H6	±427' E
NEAREST CULTURAL ITEMS	
BUILDING	±1168' SE
BUILDING UNIT	±1193' SE
HIGH OCCUPANCY BUILDING UNIT	5280'+
DESIGNATED OUTSIDE ACTIVITY AREA	5280'+
PUBLIC ROAD (COUNTY ROAD 378)	±585' SE
ABOVE GROUND UTILITY	±556' SE
RAILROAD	5280'+
PROPERTY LINE	±265' W

NOTE:

- 1) Bearings shown are Grid Bearings of the Colorado State Plane Coordinate System, North Zone, North American Datum 1983. The lineal dimensions as contained herein are based upon the "U.S. Survey Foot."
- 2) Distances to section lines measured at 90 degrees from said section lines.
- 3) Ground elevations are based on an observed GPS elevation (NAVD 1988 DATUM).
- 4) Latitude and Longitude shown are (NAD 83 DATUM).
- 5) IMPROVEMENTS: See LOCATION DRAWING for all visible improvements within 500' of oil and gas location.
- 6) This map does not represent a boundary survey.

- LEGEND
- = ALIQUOT MONUMENT AS DESCRIBED
 - = CALCULATED POSITION
 - = SURFACE HOLE LOCATION (SHL)
 - ▲ = ENTRY POINT LOCATION (EP)
 - BH = BOTTOM HOLE LOCATION (BHL)
 - ⊕ = EXISTING WELL
 - ⊖ = ABANDONED WELL



SHEET 1 OF 2

Kyle E. Rutz-On behalf of Lat40°, Inc.
Colorado Licensed Professional Land Surveyor No. 38307
DATE: 1/16/2017
PROJECT#: 2016030

Kyle E. Rutz—On behalf of Lat40, Inc.
Colorado Licensed Professional Land Surveyor No. 38307
DATE: 1/16/2017
PROJECT#: 2016030