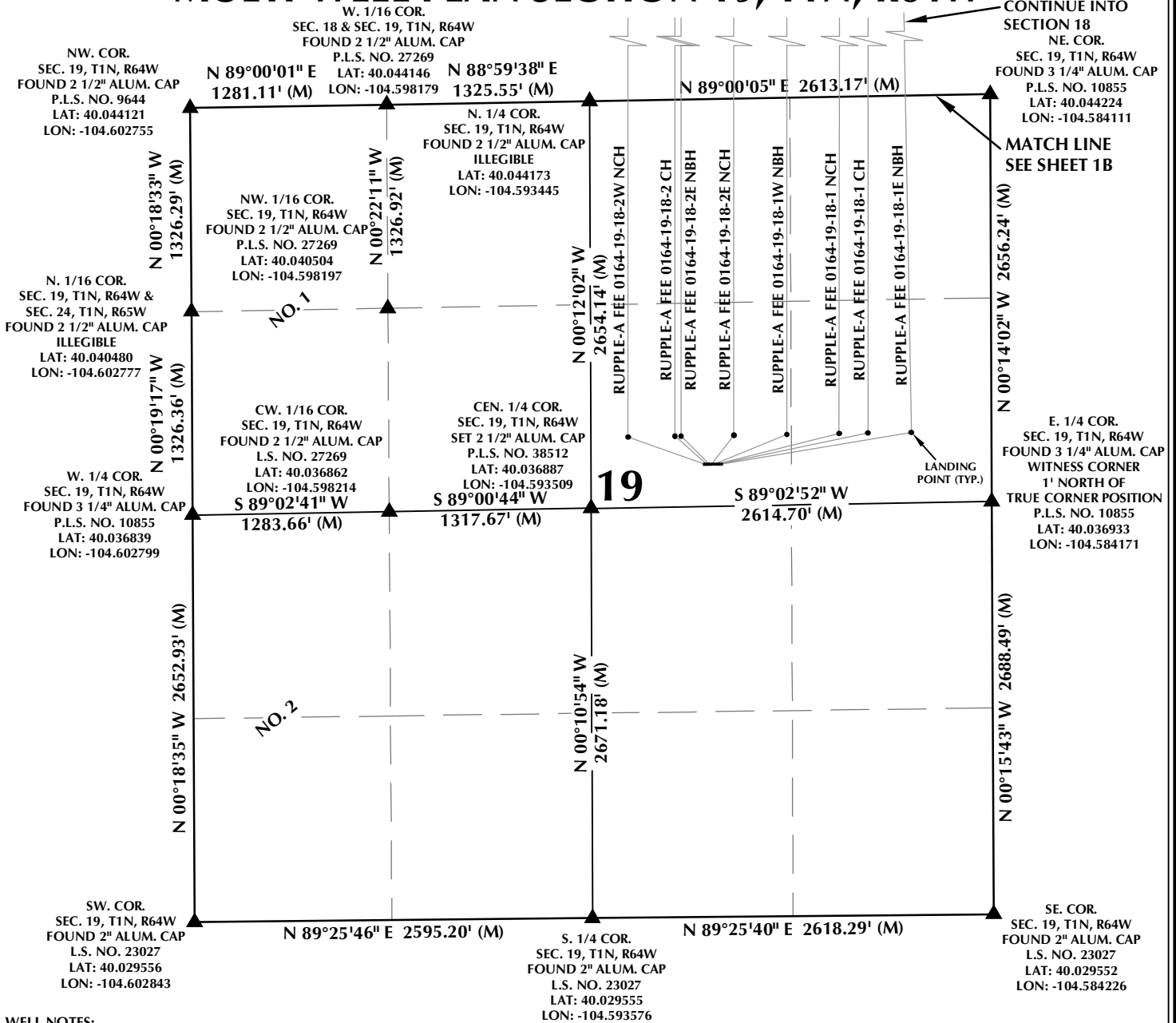


MULTI-WELL PLAN SECTION 19, T1N, R64W



WELL NOTES:

RUPPLE-A FEE 0164-19-18-1E NBH
SURFACE: 2381' FNL & 1762' FEL, SEC. 19, T1N, R64W
BOTTOM HOLE: 460' FNL & 500' FEL, SEC. 18, T1N, R64W

RUPPLE-A FEE 0164-19-18-1 CH
SURFACE: 2381' FNL & 1778' FEL, SEC. 19, T1N, R64W
BOTTOM HOLE: 460' FNL & 660' FEL, SEC. 18, T1N, R64W

RUPPLE-A FEE 0164-19-18-1 NCH
SURFACE: 2381' FNL & 1794' FEL, SEC. 19, T1N, R64W
BOTTOM HOLE: 460' FNL & 845' FEL, SEC. 18, T1N, R64W

RUPPLE-A FEE 0164-19-18-1W NBH
SURFACE: 2381' FNL & 1810' FEL, SEC. 19, T1N, R64W
BOTTOM HOLE: 460' FNL & 1190' FEL, SEC. 18, T1N, R64W

RUPPLE-A FEE 0164-19-18-2E NCH
SURFACE: 2380' FNL & 1826' FEL, SEC. 19, T1N, R64W
BOTTOM HOLE: 460' FNL & 1535' FEL, SEC. 18, T1N, R64W

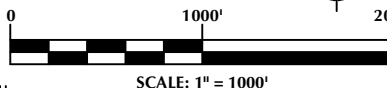
RUPPLE-A FEE 0164-19-18-2E NBH
SURFACE: 2380' FNL & 1842' FEL, SEC. 19, T1N, R64W
BOTTOM HOLE: 460' FNL & 1880' FEL, SEC. 18, T1N, R64W

RUPPLE-A FEE 0164-19-18-2 CH
SURFACE: 2380' FNL & 1858' FEL, SEC. 19, T1N, R64W
BOTTOM HOLE: 460' FNL & 1920' FEL, SEC. 18, T1N, R64W

RUPPLE-A FEE 0164-19-18-2W NCH
SURFACE: 2380' FNL & 1874' FEL, SEC. 19, T1N, R64W
BOTTOM HOLE: 460' FNL & 2225' FEL, SEC. 18, T1N, R64W

NOTES:

- ▲ INDICATES SECTION CORNER
- INDICATES CALCULATED CORNER
- BASIS OF BEARING DERIVED FROM COLORADO COORDINATE SYSTEM OF 1983 NORTH ZONE.
- ALL MEASURED DISTANCES ARE GRID.
- COMBINED SCALE FACTOR: .99972719 CALCULATED FROM THE W. 1/4 CORNER OF SECTION 19, T1N, R64W
- WELL FOOTAGES ARE MEASURED AT RIGHT ANGLES TO THE SECTION LINES.
- NO. 1 & NO. 2 AS SHOWN HEREON ARE GOVERNMENT LOTS 1 & 2 OF THE ORIGINAL GLO SURVEY.



WELL PAD - RUPPLE-A

MULTI-WELL PLAN
RUPPLE-A FEE 0164-19-18-1E NBH, RUPPLE-A FEE 0164-19-18-1 CH,
RUPPLE-A FEE 0164-19-18-1 NCH, RUPPLE-A FEE 0164-19-18-1W NBH,
RUPPLE-A FEE 0164-19-18-2E NCH, RUPPLE-A FEE 0164-19-18-2E NBH,
RUPPLE-A FEE 0164-19-18-2 CH, & RUPPLE-A FEE 0164-19-18-2W NCH,
LOCATED IN SECTIONS 18 & 19, T1N, R64W, 6TH P.M.
WELD COUNTY, COLORADO

**Anschutz Oil
Company**

555 17th Street, Suite 2400
Denver, Colorado 80202



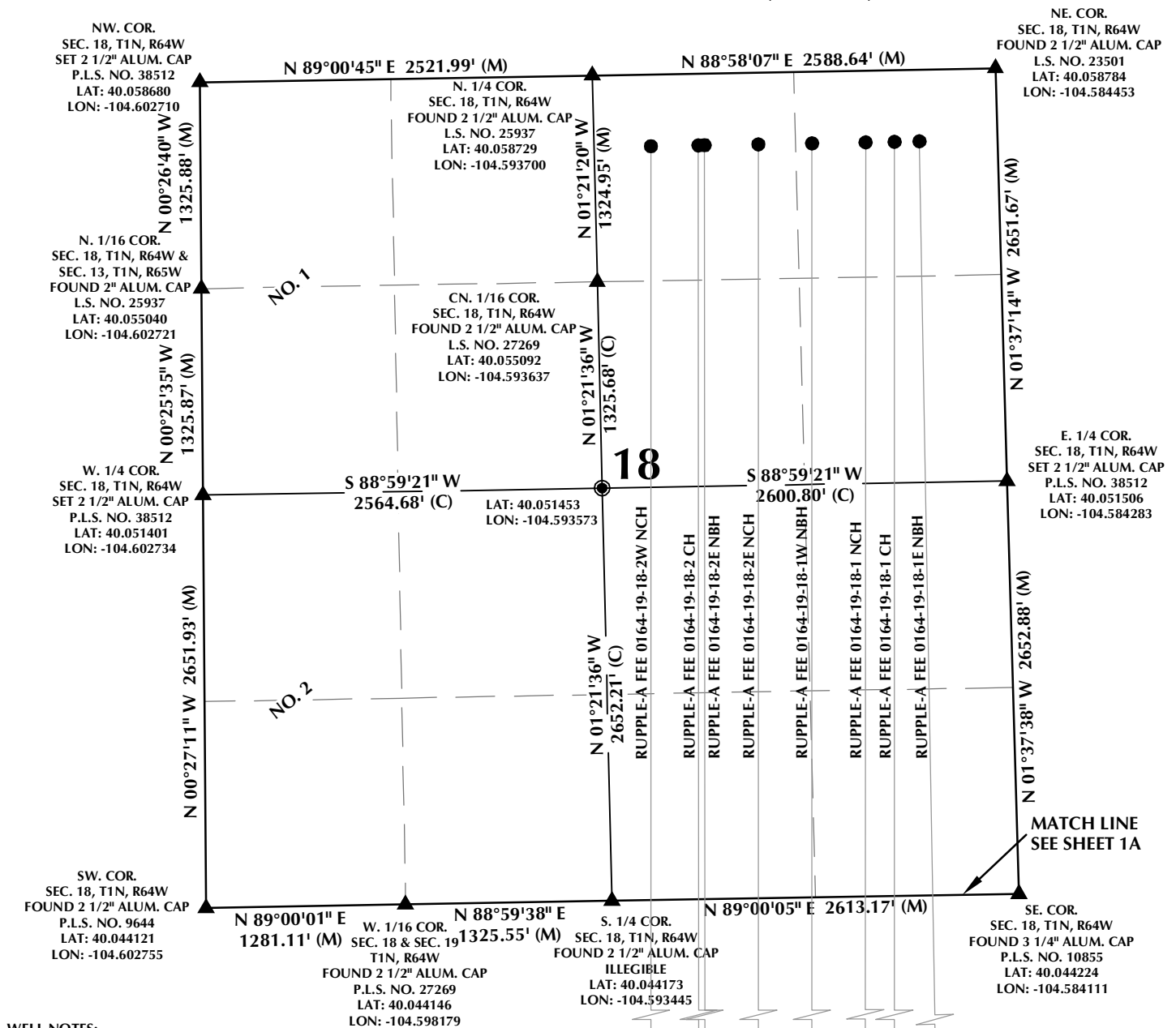
CONSULTING, LLC

SHERIDAN OFFICE
1095 Saberton Avenue
Sheridan, Wyoming 82801
Phone 307-674-0609

LOVELAND OFFICE
1635 Foxtrail Drive, Suite 204
Loveland, Colorado 80538
Phone 970-776-4331

DRAFTED BY:	SJM	CHECKED BY:	RKF	SHEET NO:
DATE DRAFTED:	3/6/17	DATE SURVEYED:	2/25/17	1A
REVISED:		FILE NAME:	17-17	1A OF 1

MULTI-WELL PLAN SECTION 18, T1N, R64W



WELL NOTES:

RUPPLE-A FEE 0164-19-18-1E NBH
SURFACE: 2381' FNL & 1762' FEL, SEC. 19, T1N, R64W
BOTTOM HOLE: 460' FNL & 500' FEL, SEC. 18, T1N, R64W

RUPPLE-A FEE 0164-19-18-1 CH
SURFACE: 2381' FNL & 1778' FEL, SEC. 19, T1N, R64W
BOTTOM HOLE: 460' FNL & 660' FEL, SEC. 18, T1N, R64W

RUPPLE-A FEE 0164-19-18-1 NCH
SURFACE: 2381' FNL & 1794' FEL, SEC. 19, T1N, R64W
BOTTOM HOLE: 460' FNL & 845' FEL, SEC. 18, T1N, R64W

RUPPLE-A FEE 0164-19-18-1W NBH
SURFACE: 2381' FNL & 1810' FEL, SEC. 19, T1N, R64W
BOTTOM HOLE: 460' FNL & 1190' FEL, SEC. 18, T1N, R64W

RUPPLE-A FEE 0164-19-18-2E NCH
SURFACE: 2380' FNL & 1826' FEL, SEC. 19, T1N, R64W
BOTTOM HOLE: 460' FNL & 1535' FEL, SEC. 18, T1N, R64W

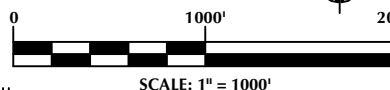
RUPPLE-A FEE 0164-19-18-2E NBH
SURFACE: 2380' FNL & 1842' FEL, SEC. 19, T1N, R64W
BOTTOM HOLE: 460' FNL & 1880' FEL, SEC. 18, T1N, R64W

RUPPLE-A FEE 0164-19-18-2 CH
SURFACE: 2380' FNL & 1858' FEL, SEC. 19, T1N, R64W
BOTTOM HOLE: 460' FNL & 1920' FEL, SEC. 18, T1N, R64W

RUPPLE-A FEE 0164-19-18-2W NCH
SURFACE: 2380' FNL & 1874' FEL, SEC. 19, T1N, R64W
BOTTOM HOLE: 460' FNL & 2225' FEL, SEC. 18, T1N, R64W

NOTES:

- INDICATES SECTION CORNER
- INDICATES CALCULATED CORNER
- BASIS OF BEARING DERIVED FROM COLORADO COORDINATE SYSTEM OF 1983 NORTH ZONE.
- ALL MEASURED DISTANCES ARE GRID.
- COMBINED SCALE FACTOR: .99972719 CALCULATED FROM THE W. 1/4 CORNER OF SECTION 19, T1N, R64W
- WELL FOOTAGES ARE MEASURED AT RIGHT ANGLES TO THE SECTION LINES.
- NO. 1 & NO. 2 AS SHOWN HEREON ARE GOVERNMENT LOTS 1 & 2 OF THE ORIGINAL GLO SURVEY.



WELL PAD - RUPPLE-A

MULTI-WELL PLAN
RUPPLE-A FEE 0164-19-18-1E NBH, RUPPLE-A FEE 0164-19-18-1 CH,
RUPPLE-A FEE 0164-19-18-1 NCH, RUPPLE-A FEE 0164-19-18-1W NBH,
RUPPLE-A FEE 0164-19-18-2E NCH, RUPPLE-A FEE 0164-19-18-2E NBH,
RUPPLE-A FEE 0164-19-18-2 CH, & RUPPLE-A FEE 0164-19-18-2W NCH,
LOCATED IN SECTIONS 18 & 19, T1N, R64W, 6TH P.M.
WELD COUNTY, COLORADO

**Anschutz Oil
Company**

555 17th Street, Suite 2400
Denver, Colorado 80202



CONSULTING, LLC

SHERIDAN OFFICE
1095 Saberton Avenue
Sheridan, Wyoming 82801
Phone 307-674-0609

LOVELAND OFFICE
1635 Foxtrail Drive, Suite 204
Loveland, Colorado 80538
Phone 970-776-4331

DRAFTED BY:	SJM	CHECKED BY:	RKF	SHEET NO:
DATE DRAFTED:	3/6/17	DATE SURVEYED:	2/25/17	1B
REVISED:		FILE NAME:	17-17	1B OF 1