

# NOBLE ENERGY INC.

70 Ranch 31-09  
NWNE 9-5N-63W  
861 FNL & 2146 FEL  
WELD COUNTY, CO  
Wattenberg

## CURRENT WELLBORE SCHEMATIC with PROPOSED P&A 2/7/2017

API: 05-123-29960  
COGCC #

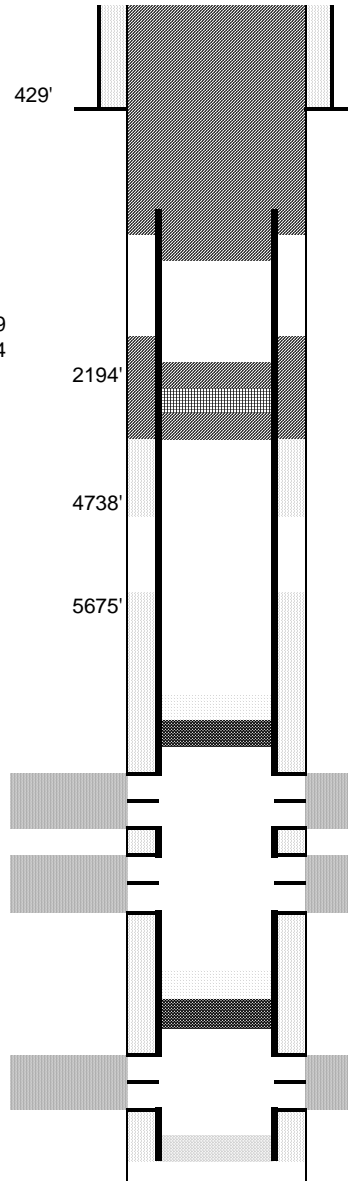
KB Elev: 4736'  
GL Elev: 4722'

Spud Date: 8/2/2006

Surface Casing :  
8 5/8", 24#, J-55 @ 429'  
Cement: 200 sx  
TOC: Surface

WW	N/A
SC	429
FH	404

Production Casing :  
4 1/2", 11.6#, M-80 @ 7332'  
Cement: 695 sx  
TD: 7355'



Cut surface casing off 6'-8' below surface.

Cut production casing @ 629'  
Cmt from 50' in casing stub (679')  
Cmt job 1: 130 sx 679'-329'  
Cmt job 2: 105 sx to surface

Pump 210 sx through/on top of CICR.  
Cmt Coverage inside PC: 1911'  
Cmt Coverage outside PC: 1640'  
Set CICR @ 2,040'  
Perforate csg @ 2,140'

CIBP @ 6420' w/ 2 sx cement on top

Niobrara Perforations: 6470' - 6582'

Codell Perforations: 6746' - 6757'

CIBP @ 7140' w/ 10' cement on top (CURRENT)

J Sand Perforations: 7192' - 7202'

TD: 7355'