



January 30, 2017

Mr. Matthew Lepore, Director
Colorado Oil & Gas Conservation Commission
1120 Lincoln Street, Ste. 801
Denver, Colorado 80203

RE: Rule 318.A.e.
AD-Dairy C6-20-24
AD-Dairy 2-20-24
AD-Dairy 3-20-24
AD-Dairy C7-20-24
AD-Dairy 4-20-24
AD-Dairy 5-20-24
AD-Dairy C8-20-24

Surface Location: NWSW, Section 21, Township 5N, Range 65W, Weld County, Colorado

Dear Mr. Lepore,

Extraction Oil and Gas is planning to drill the captioned horizontal wells in accordance with the provision of COGCC Rule 318A.e.

The proposed wellbore spacing unit consists of:

Section 24-5N-66W: SE/4
Section 19-5N-65W: S/2
Section 20-5N-65W: S/2

The spacing unit is an 800-acre wellbore spacing unit for the Niobrara and Codell formations.

Extraction Oil and Gas hereby certifies to the Director that all Owners within the proposed spacing unit above were notified and 30 days have passed without objection.

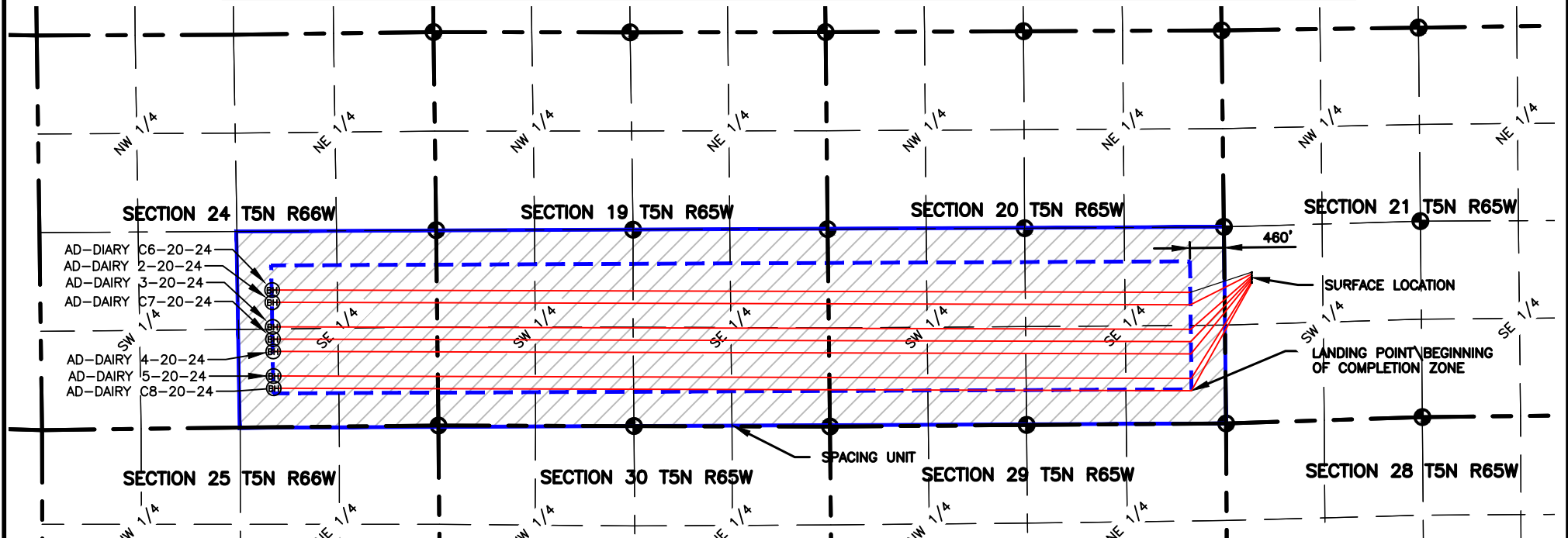
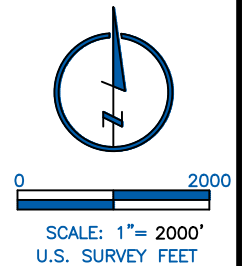
If you have any questions or issues regarding this permit, please contact Alyssa Andrews at (720) 481-2379.

Sincerely,

Alyssa Andrews
Regulatory Analyst
Extraction Oil & Gas, LLC

NAME: DAIRY
SPACING UNIT: SE/4 SEC 24 T5N 66W, S/2 SEC 19, S/2 SEC 20 T5N, 65W UNIT ACREAGE: 800

WELL NAME	SURFACE LOCATION				LANDING POINT\BEGIN HORIZONTAL COMPLETION ZONE				BOTTOM HOLE\END HORIZONTAL COMPLETION ZONE				COMPLETION ZONE BEARING	COMPLETION ZONE LENGTH
	DIST.	DIR.	DIST.	DIR.	DIST.	DIR.	DIST.	DIR.	DIST.	DIR.	DIST.	DIR.		
AD-DAIRY C6-20-24	2020'	FSL	369'	FWL	1763'	FSL	460'	FEL	1843'	FSL	2211'	FEL	N89°51'00"W	12327.21'
AD-DAIRY 2-20-24	1996'	FSL	368'	FWL	1598'	FSL	460'	FEL	1678'	FSL	2210'	FEL	N89°51'00"W	12326.30'
AD-DAIRY 3-20-24	1972'	FSL	368'	FWL	1268'	FSL	460'	FEL	1348'	FSL	2208'	FEL	N89°51'00"W	12324.49'
AD-DAIRY C7-20-24	1948'	FSL	368'	FWL	1103'	FSL	460'	FEL	1183'	FSL	2208'	FEL	N89°51'00"W	12323.58'
AD-DAIRY 4-20-24	1924'	FSL	368'	FWL	938'	FSL	460'	FEL	1018'	FSL	2207'	FEL	N89°51'00"W	12322.67'
AD-DAIRY 5-20-24	1900'	FSL	367'	FWL	608'	FSL	460'	FEL	688'	FSL	2205'	FEL	N89°51'00"W	12320.86'
AD-DAIRY C8-20-24	1876'	FSL	367'	FWL	443'	FSL	460'	FEL	523'	FSL	2204'	FEL	N89°51'00"W	12319.95'



4715 Innovation Drive 970.226.0342 | P
 Fort Collins, CO 80525 970.226.0879 | F
www.LRA-Inc.com

PROPOSED SPACING UNIT EXHIBIT
 ARDREY 21-I
 DAIRY

LEGEND

- ⊕ ALIQUOT CORNER
- ⊙ BOTTOM HOLE
- △ COMPUTED ALIQUOT CORNER FROM MONUMENT ACCESSORIES
- COMPUTED FROM GLO RECORDS
- SECTION LINE
- - - SIXTEENTH LINE
- - - QUARTER SECTION LINE

DRAWN BY JMC **DATE** 01/17/17 **COGCC ID** **PROJECT - TASK NUMBER** 0216012 **BOOK AND PAGE** MRI 04 20-25

SURFACE - LOCATION
 NW/4 SW/4 SEC 21 T5N R65W

PATH\FILENAME P:_Engineering\0216012 Ardrey 21-I\DRAWINGS\EXHIBITS\0216012-PSU-DAIRY.dwg