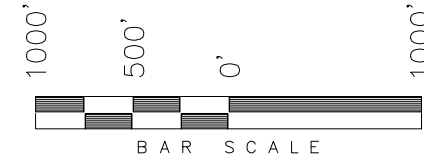


T10N, R58W, 6th P.M.

WHITING OIL & GAS CORP.

WELL LOCATION, RAZOR FED 29G-3209,
LOCATED AS SHOWN IN THE SW 1/4
NE 1/4 OF SECTION 29, T10N, R58W,
6th P.M. WELD COUNTY, COLORADO.



◆ = SECTION CORNERS LOCATED

NOTES:

1. Bearings are based on Global Positioning Satellite Observations.
2. G.P.S. Operator: C.D. Slauch, (PDOP) = 1.3
3. Monument Coordinates are Reported in NAD 83.

BASIS OF ELEV; Elevations are based on an
N.G.S. OPUS Correction. LOCATION:
LAT. 40°46'03.41" LONG. 103°46'26.97"
(Tristate Aluminum Cap) NAVD 88 Elev. 4750.22'

THIS IS TO CERTIFY THAT THE ABOVE PLAT WAS
PREPARED FROM FIELD NOTES OF REAL SURVEYS
MADE BY ME OR UNDER MY SUPERVISION. THE
LOCATION HAS BEEN STAKED ON THE GROUND AS
SHOWN ON THE PLAT AND THAT THE SAME ARE
TRUE AND CORRECT TO THE BEST OF MY
KNOWLEDGE AND BELIEF.

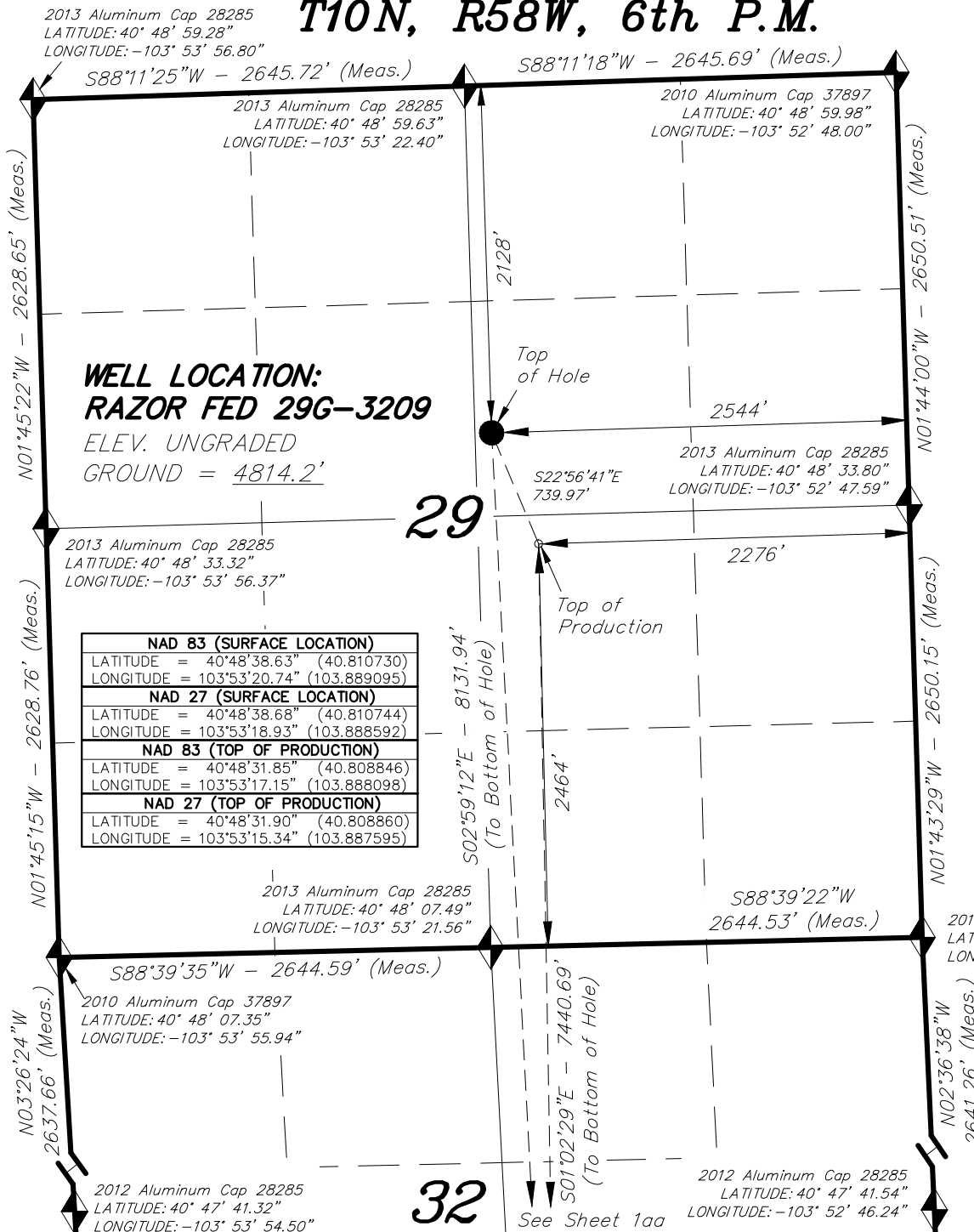
07-12-16
30125

REGISTERED LAND SURVEYOR
REGISTRATION NO. 30125
STATE OF COLORADO

TRI STATE LAND SURVEYING & CONSULTING

180 NORTH VERNAL AVE. - VERNAL, UTAH 84078
(435) 781-2501

DATE SURVEYED: 06-09-16	SURVEYED BY: C.D.S.	SHEET 1a
DATE DRAWN: 07-06-16	DRAWN BY: F.T.M.	
REVISED: 07-12-16 F.T.M.	SCALE: 1" = 1000'	



**T10N, R58W,
6th P.M.**

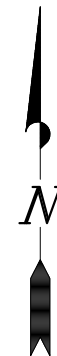
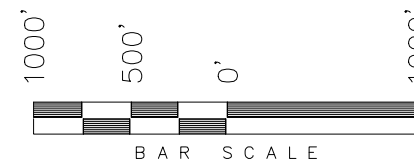
29

See
Sheet 1a

2013 Aluminum Cap 28285
LATITUDE: 40° 48' 33.80"
LONGITUDE: -103° 52' 47.59"

WHITING OIL & GAS CORP.

TARGET BOTTOM HOLE,
RAZOR FED 29G-3209, LOCATED
AS SHOWN IN THE SW 1/4 SE 1/4
OF SECTION 32, T10N, R58W, 6th
P.M. WELD COUNTY, COLORADO.



NOTES:

1. Bearings are based on Global Positioning Satellite Observations.
2. Monument Coordinates are Reported in NAD 83.

◆ = SECTION CORNERS LOCATED

THIS IS TO CERTIFY THAT THE ABOVE PLAT WAS
PREPARED FROM FIELD NOTES OF REAL SURVEYS
MADE BY ME OR UNDER MY SUPERVISION. THE
LOCATION HAS BEEN STAKED ON THE GROUND AS
SHOWN ON THE PLAT, AND THAT THE SAME ARE
TRUE AND CORRECT TO THE BEST OF MY
KNOWLEDGE AND BELIEF. 07-12-16
30125

REGISTERED LAND SURVEYOR
REGISTRATION # 30125
STATE OF COLORADO

TRI STATE LAND SURVEYING & CONSULTING

180 NORTH VERNAL AVE. - VERNAL, UTAH 84078
(435) 781-2501

DATE SURVEYED: 06-09-16	SURVEYED BY: C.D.S.	SHEET 1aa
DATE DRAWN: 07-06-16	DRAWN BY: F.T.M.	
REVISED: 07-12-16 F.T.M.	SCALE: 1" = 1000'	

NAD 83 (BOTTOM HOLE LOCATION)	
LATITUDE = 40°47'18.34" (40.788429)	
LONGITUDE = 103°53'17.15" (103.888098)	
NAD 27 (BOTTOM HOLE LOCATION)	
LATITUDE = 40°47'18.39" (40.788442)	
LONGITUDE = 103°53'15.34" (103.887595)	

**TARGET BOTTOM HOLE:
RAZOR FED 29G-3209**

32

S01°02'29"E - 7440.69'
(From Top of Production)

S02°59'12"E - 8131.94'
(From Top of Hole)

Bottom
of Hole

2441'

300'

2012 Aluminum Cap 28285
LATITUDE: 40° 47' 41.32"
LONGITUDE: -103° 53' 54.50"

2012 Aluminum Cap 28285
LATITUDE: 40° 47' 41.54"
LONGITUDE: -103° 52' 46.24"

2014 Aluminum Cap 38285
LATITUDE: 40° 47' 15.37"
LONGITUDE: -103° 53' 19.19"

2014 Aluminum Cap 38285
LATITUDE: 40° 47' 15.46"
LONGITUDE: -103° 52' 45.31"

S88°45'11"W - 2606.28' (Meas.)

S88°45'49"W - 2606.39' (Meas.)

2014 Aluminum Cap 38285
LATITUDE: 40° 47' 15.28"
LONGITUDE: -103° 53' 53.06"

N01°45'15"W
2628.76' (Meas.)

N01°43'29"W
2650.15' (Meas.)

N02°36'38"W - 2641.26' (Meas.)

N02°36'26"W - 2641.21' (Meas.)

N03°26'24"W - 2637.66' (Meas.)

N03°26'32"W - 2637.92' (Meas.)

2013 Aluminum Cap 28285
LATITUDE: 40° 48' 33.32"
LONGITUDE: -103° 53' 56.37"

2013 Aluminum Cap 28285
LATITUDE: 40° 48' 07.49"
LONGITUDE: -103° 53' 21.56"

2010 Aluminum Cap 37897
LATITUDE: 40° 48' 07.35"
LONGITUDE: -103° 53' 55.94"

2010 Aluminum Cap 37897
LATITUDE: 40° 48' 07.62"
LONGITUDE: -103° 52' 47.18"