



**photo 1:** Facing west along the access road. This erosion channel was documented in the previous inspection.



**photo 2:** A 3 ft. shovel indicates depth of channel.





**photo 3:** The erosion channel is directed out into the pasture which is causing additional disturbance.



**photo 4:** Facing west along the access road.





**photo 5:** Sediment is being directed out into the pasture and is beginning to fill in the culverts.



**photo 6:** Facing west at the south side of the access road. Sediment appears to have deposited from erosion off the access road.





**photo 7:** Wattle placed at the end of the rip/rap along the access road is filled in with sediment.



**photo 8:** Facing back towards the east along the access road where rip/rap rock has been placed.





**photo 9:** Facing south toward the location.



**photo 10:** Facing south toward the location.





**photo 11:** Vegetation in areas near the silt fence sections has not established. There are signs of erosion occurring in this area.



**photo 12:** The sections of silt fence are in disrepair.





**photo 13:** Facing north at the location. There is undesirable weed growth throughout this area.



**photo 14:** Facing south at the location. There is undesirable weed growth throughout this area.





**photo 15:** There are wattles which are filled in with sediment.



**photo 16:** Facing north at the location. The white sandbags are filled in with sediment and the sections of silt fence are in disrepair.





**photo 17:** Facing toward the south side of the location.



**photo 18:** South side of the location facing northwest. Vegetation has not established in this area.



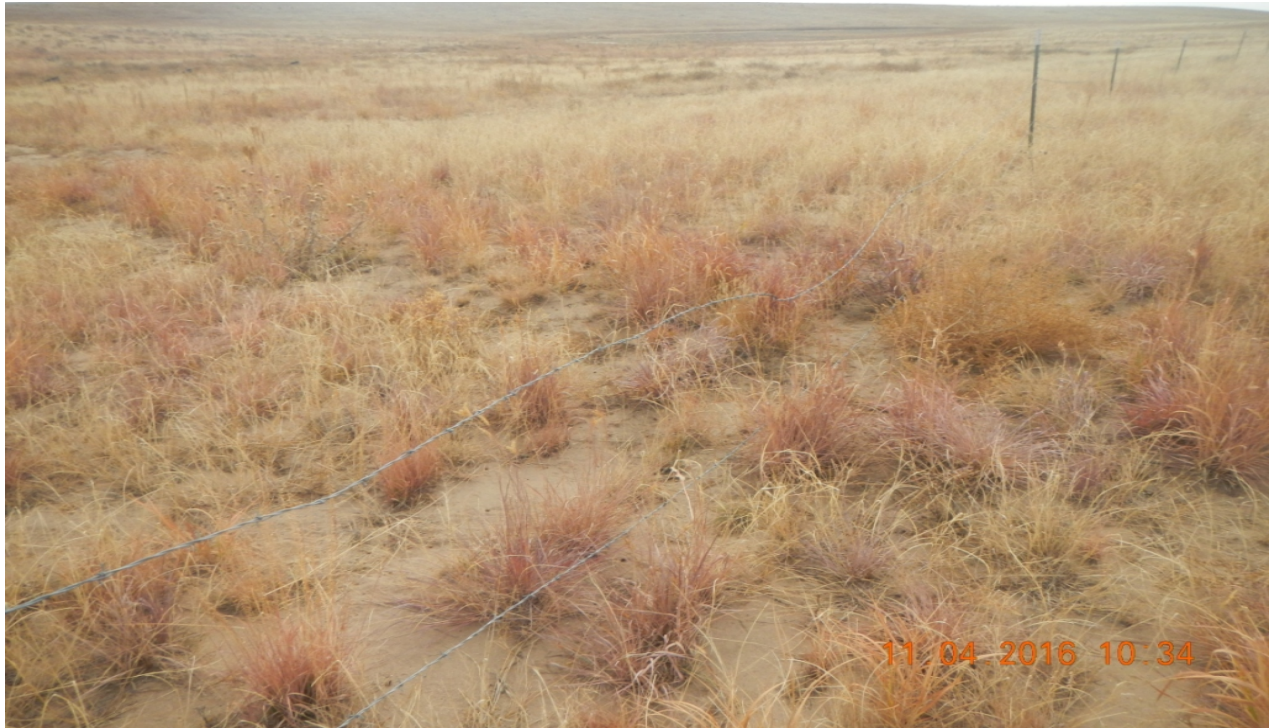


**photo 19:** Facing east along the west side of the location.



**photo 20:** The wattle is filled in with sediment.





**photo 21:** Fence at the west side of the location which was documented in the previous inspection has not been repaired.



**photo 22:** Northwest side of the location facing southeast.