

# T1N, R67W

NW. COR.  
SEC. 11, T1N, R67W  
FOUND 2" ALUM. CAP  
L.S. NO. 25937

S 89°49'51" W 2600.96' (M)

S 89°35'05" W 2628.10' (M)

NE. COR.  
SEC. 11, T1N, R67W  
FOUND 2 1/2" ALUM. CAP  
L.S. NO. 11372

N. 1/4 COR.  
SEC. 11, T1N, R67W  
FOUND 2 1/2" ALUM. CAP  
L.S. NO. 25937

LEINWEBER FED 4C-8HZ  
SURFACE LOCATION

WELL BORE  
CONTINUES INTO  
SECTION 12

N. 1/16 COR.  
SEC. 11 & SEC. 12  
T1N, R67W  
FOUND 2 1/2" ALUM. CAP  
L.S. NO. 36073

CENTER 1/4 COR.  
SEC. 11, T1N, R67W  
FOUND 2 1/2" ALUM. CAP  
L.S. NO. 25937

11

W. 1/4 COR.  
SEC. 11, T1N, R67W  
FOUND 2" ALUM. CAP  
ILLEGIBLE

S 89°38'27" W  
2613.83' (M)

S 89°34'23" W  
2640.12' (M)

E. 1/4 COR.  
SEC. 11, T1N, R67W  
FOUND 2 1/2" ALUM. CAP  
L.S. NO. 11372

SURFACE LOCATION: NAD 83  
GROUND ELEVATION= 4956.0'  
LATITUDE= 40.071501°  
LONGITUDE= -104.849885°  
LATITUDE= 40°04'17.402"  
LONGITUDE= -104°50'59.587"  
HEEL LOCATION: NAD 83  
LATITUDE= 40.069617°  
LONGITUDE= -104.847456°  
LATITUDE= 40°04'10.623"  
LONGITUDE= -104°50'50.841"  
BOTTOM HOLE LOCATION: NAD 83  
LATITUDE= 40.070175°  
LONGITUDE= -104.809597°  
LATITUDE= 40°04'12.630"  
LONGITUDE= -104°48'34.549"

SW. COR.  
SEC. 11, T1N, R67W  
FOUND 2" ALUM. CAP  
ILLEGIBLE

S 89°34'27" W 2626.96' (M)

S 89°22'30" W 2638.88' (M)

SE. COR.  
SEC. 11, T1N, R67W  
FOUND 2 1/2" ALUM. CAP  
L.S. NO. 11372

25'12" 7°55'

## CERTIFICATE OF SURVEYOR:

THIS IS TO CERTIFY THAT THE ABOVE PLAT WAS PREPARED FROM FIELD NOTES OF ACTUAL SURVEY MADE BY ME OR UNDER MY SUPERVISION AND THAT THE SAME ARE TRUE AND CORRECT TO THE BEST OF MY KNOWLEDGE AND BELIEF. THIS CERTIFICATE DOES NOT REPRESENT A LAND SURVEY PLAT OR IMPROVEMENT SURVEY PLAT AS DEFINED BY C.R.S. 38-51-102 AND CANNOT BE RELIED UPON TO DETERMINE OWNERSHIP.

*Randall K. French*  
RANDALL K. FRENCH  
PROFESSIONAL LAND SURVEYOR  
COLORADO REGISTRATION NUMBER 18512

NOTE:  
ACCORDING TO COLORADO STATE LAW YOU MUST COMMENCE ANY LEGAL ACTION BASED UPON ANY DEFECT IN THIS SURVEY WITHIN THREE YEARS AFTER YOU FIRST DISCOVER SUCH DEFECT. IN NO EVENT MAY ANY ACTION BASED UPON ANY DEFECT IN THIS SURVEY BE COMMENCED MORE THAN TEN YEARS FROM THE DATE ON THE CERTIFICATION SHOWN HEREON.

NOTE:  
MAGNETIC NORTH IS CURRENT AS OF 5/13/2016.  
MAGNETIC NORTH CHANGES WEST 0°06' PER YEAR.



SCALE: 1" = 1000'

## NOTES:

- ▲ INDICATES SECTION CORNER
- INDICATES CALCULATED CORNER
- ELEVATION BASED ON NAVD88 (GEOID12B)
- BASIS OF BEARING DERIVED FROM COLORADO COORDINATE SYSTEM 1983 NORTH ZONE.
- ALL MEASURED DISTANCES ARE GRID.  
COMBINED SCALE FACTOR: .99972422 CALCULATED FROM THE NW. CORNER OF SECTION 11, T1N, R67W
- OPERATOR: ROB WILSON / PDOP = 1.6
- SEE ADDENDUM TO WELL LOCATION CERTIFICATE FOR EXISTING IMPROVEMENTS WITHIN 500' OF THE WELL PAD.
- WELL FOOTAGES ARE MEASURED AT RIGHT ANGLES TO THE SECTION LINES.
- THE BOTTOM OF HOLE BEARS N88°28'04"E, 10597' FROM THE HEEL LOCATION.

## WELL PAD - LEINWEBER FED 31N-8HZ

LEINWEBER FED 4C-8HZ  
WELL LOCATION CERTIFICATE  
458' FNL & 335' FEL NENE (SURFACE)  
LOCATED IN SECTION 11  
1143' FNL & 337' FWL NWNW (HEEL)  
LOCATED IN SECTION 12  
T1N, R67W, 6TH P.M.  
1018' FNL & 249' FWL NWNW (BOTTOM)  
LOCATED IN SECTION 8  
T1N, R66W, 6TH P.M.  
WELD COUNTY, COLORADO

Kerr-McGee Oil &  
Gas Onshore L.P.  
1099 18th Street  
Denver, Colorado 80202



## CONSULTING, LLC

SHERIDAN OFFICE  
1095 Saberton Avenue  
Sheridan, Wyoming 82801  
Phone 307-674-0609

LOVELAND OFFICE  
1635 Foxtrail Drive, Suite 204  
Loveland, Colorado 80538  
Phone 970-776-4331

DRAFTED BY:	LMO	CHECKED BY:	RKF	SHEET NO:
DATE DRAFTED:	6/27/16	DATE SURVEYED:	4/25/16	1
REVISED:		FILE NAME:	16-33	1 OF 4

N. 1/4 COR.  
SEC. 12, T1N, R67W  
FOUND 2 1/2" ALUM. CAP  
L.S. NO. 11372

NW. COR.  
SEC. 12, T1N, R67W  
FOUND 2 1/2" ALUM. CAP  
L.S. NO. 11372 ▲

**S 89°47'20" W 2620.77' (M)**

**S 89°27'26" W 2646.38' (M)**

NE. COR.  
SEC. 12, T1N, R67W  
FOUND 3 1/4" ALUM. CAP  
L.S. NO. 13155

N. 1/16 COR.  
SEC. 11 & SEC. 12—  
T1N, R67W  
FOUND 2 1/2" ALUM. C  
L.S. NO. 36073

S 89°45'28" W  
NW. 1/16 COR. 1312.22' (M)  
SEC. 12, T1N, R67W  
FOUND 2 1/2" ALUM. CAP  
P.L.S. NO. 38046

CN. 1/16 COR.  
SEC. 12, T1N, R67W  
FOUND 2<sup>nd</sup> ALUM. CAP  
L.S. NO. 11372

CE. 1/16 COR.  
SEC. 12, T1N, R67W  
FOUND 2" ALUM. CAP  
WITNESS COR. 25' SOUTH OF  
CORNER POSITION  
L.S. NO. 11372

WELL BORE  
CONTINUES INTO  
SECTION 7, T1N, R66W

W. 1/4 COR.  
SEC. 12, T1N, R67W  
FOUND 2 1/2" ALUM. CAP  
L.S. NO. 11372

S 89°40'27" W		S 89°38'27" W
1311.41' (M)	▲	1305.93' (M)

S 89°42'32" W	S 89°40'36" W
1323.39' (M)	1317.91' (M)

E. 1/4 COR.  
SEC. 12, T1N, R67W  
FOUND 3 1/4" ALUM. CAP  
L.S. NO. 13155

CW. 1/16 COR.  
 SEC. 12, T1N, R67W  
 FOUND 2" ALUM. CAP  
 WITNESS COR. 10' NORTH OF  
 CORNER POSITION  
 L.S. NO. 11372

CENTER 1/4 COR.  
SEC. 12, T1N, R67W  
SET 2 1/2" ALUM. CAP  
P.L.S. NO. 38512

**SURFACE LOCATION: NAD 83**  
**GROUND ELEVATION= 4956.0'**  
**LATITUDE= 40.071501°**  
**LONGITUDE= -104.849885°**  
**LATITUDE= 40°04'17.402"**  
**LONGITUDE= -104°50'59.587"**  
**HEEL LOCATION: NAD 83**  
**LATITUDE= 40.069617°**  
**LONGITUDE= -104.847456°**  
**LATITUDE= 40°04'10.623"**  
**LONGITUDE= -104°50'50.841"**  
**BOTTOM HOLE LOCATION: NAD 83**  
**LATITUDE= 40.070175°**  
**LONGITUDE= -104.809597°**  
**LATITUDE= 40°04'12.630"**  
**LONGITUDE= -104°48'34.549"**

**MATCH LINE  
SEE SHEET 1**

**MATCH LINE**  
**SEE SHEET 3**

SW. COR.  
SEC. 12, T1N, R67W  
FOUND 2 1/2" ALUM. CAP  
L.S. NO. 11372

**S 89°29'55" W 2635.51' (M)**

**S 89°29'33" W 2617.13' (M)**

SE. COR.  
SEC. 12, T1N, R67W  
FOUND 2 1/2" ALUM. CAP  
I.S. NO. 11372

**CERTIFICATE OF SURVEYOR:**

THIS IS TO CERTIFY THAT THE ABOVE PLAT WAS PREPARED FROM FIELD NOTES OF ACTUAL SURVEY MADE BY ME OR UNDER MY SUPERVISION AND THAT THE SAME ARE TRUE AND CORRECT TO THE BEST OF MY KNOWLEDGE AND BELIEF. THIS CERTIFICATE DOES NOT REPRESENT A LAND SURVEY PLAT OR IMPROVEMENT SURVEY PLAT AS DEFINED BY C.R.S. 38-51-102 AND CANNOT BE RELIED UPON TO DETERMINE OWNERSHIP.

RANDALL K. FRENCH  
PROFESSIONAL LAND SURVEYOR  
COLORADO REGISTRATION NUMBER 38



**NOTICE:** ACCORDING TO COLORADO STATE LAW YOU MUST COMMENCE ANY LEGAL ACTION BASED UPON ANY DEFECT IN THIS SURVEY WITHIN THREE YEARS AFTER YOU FIRST DISCOVER SUCH DEFECT. IN NO EVENT MAY ANY ACTION BASED UPON ANY DEFECT IN THIS SURVEY BE COMMENCED MORE THAN TEN YEARS FROM THE DATE ON THE CERTIFICATION SHOWN HEREON.

**NOTE:**  
MAGNETIC NORTH IS CURRENT AS OF 5/13/2016.  
MAGNETIC NORTH CHANGES WEST 0°06' PER YEAR.

A horizontal scale bar with a black and white checkerboard pattern. It is marked with '0' at the left end, '1000'' in the middle, and '2000'' at the right end.

SCALE: 1" = 1000'

**NOTES:**

1.  INDICATES SECTION CORNER
2.  INDICATES CALCULATED CORNER
3. ELEVATION BASED ON NAVD88 (GEOID12B)
4. BASIS OF BEARING DERIVED FROM COLORADO COORDINATE SYSTEM 1983 NORTH ZONE.
5. ALL MEASURED DISTANCES ARE GRID.
6. COMBINED SCALE FACTOR: .99972422 CALCULATED FROM THE NW. CORNER OF SECTION 11, T1N, R67W
7. OPERATOR: ROB WILSON / PDOP = 1.6
8. SEE ADDENDUM TO WELL LOCATION CERTIFICATE FOR EXISTING IMPROVEMENTS WITHIN 500' OF THE WELL PAD.
9. WELL FOOTAGES ARE MEASURED AT RIGHT ANGLES TO THE SECTION LINES.
10. THE BOTTOM OF HOLE BEARS N88°28'04"E, 10597' FROM THE HEEL LOCATION.

## WELL PAD - LEINWEBER FED 31N-8HZ

LEINWEBER FED 4C-8HZ  
WELL LOCATION CERTIFICATE  
458' FNL & 335' FEL NENE (SURFACE)  
LOCATED IN SECTION 11  
1143' FNL & 337' FWL NWNW (HEEL)  
LOCATED IN SECTION 12  
T1N, R67W, 6TH P.M.  
1018' FNL & 249' FWL NWNW (BOTTOM)  
LOCATED IN SECTION 8  
T1N, R66W, 6TH P.M.  
WELD COUNTY, COLORADO

**Kerr-McGee Oil &  
Gas Onshore L.P.**  
1099 18th Street  
Denver, Colorado 80202



**CONSULTING, LLC**

**SHERIDAN OFFICE**  
1095 Saberton Avenue  
Sheridan, Wyoming 82801  
Phone 307-674-0609

**LOVELAND OFFICE**  
1635 Foxtrail Drive, Suite 204  
Loveland, Colorado 80538  
Phone 970-776-4331

DRAFTED BY: LMO	CHECKED BY: RKF	SHEET NO: <b>2</b> 2 OF 4
DATE DRAFTED: 6/27/16	DATE SURVEYED: 4/25/16	
REVISED:	FILE NAME: 16-33	

# T1N, R66W

E. 1/16 COR.  
SEC. 6 & SEC. 7, T1N, R66W  
FOUND 2" ALUM. CAP  
L.S. NO. 25937

NW. COR.  
SEC. 7, T1N, R66W  
FOUND 3 1/4" ALUM. CAP  
L.S. NO. 13155

S 89°45'52" W  
1318.81' (M)  
N. 1/4 COR.  
SEC. 7, T1N, R66W  
SET 2 1/2" ALUM. CAP  
P.L.S. NO. 38512

S 89°41'56" W  
1320.11' (M)

NE. COR.  
SEC. 7, T1N, R66W  
FOUND 2" ALUM. CAP  
L.S. NO. 30830

S 87°42'42" W 2789.45' (M)

N 88°28'04" E 10597' GRID  
N 88°53'16" E TRUE  
N 80°33'04" E MAGNETIC

N 00°54'42" W 2638.38' (M)

N 00°42'53" W  
2687.95' (M)

N 00°33'37" W 2639.50' (M)

WELL BORE  
CONTINUES INTO  
SECTION 8

CENTER 1/4 COR.  
SEC. 7, T1N, R66W  
FOUND 2" ALUM. CAP  
L.S. NO. 25937

S 88°43'42" W  
2779.47' (M)

S 88°40'40" W  
2631.87' (M)

W. 1/4 COR.  
SEC. 7, T1N, R66W  
FOUND 3 1/4" ALUM. CAP  
L.S. NO. 13155

E. 1/4 COR.  
SEC. 7, T1N, R66W  
FOUND 2 1/2" ALUM. CAP  
L.S. NO. 30830

SURFACE LOCATION: NAD 83  
GROUND ELEVATION= 4956.0'  
LATITUDE= 40.071501°  
LONGITUDE= -104.849885°  
LATITUDE= 40°04'17.402"  
LONGITUDE= -104°50'59.587"  
HEEL LOCATION: NAD 83  
LATITUDE= 40.069617°  
LONGITUDE= -104.847456°  
LATITUDE= 40°04'10.623"  
LONGITUDE= -104°50'50.841"  
BOTTOM HOLE LOCATION: NAD 83  
LATITUDE= 40.070175°  
LONGITUDE= -104.809597°  
LATITUDE= 40°04'12.630"  
LONGITUDE= -104°48'34.549"

MATCH LINE  
SEE SHEET 2

MATCH LINE  
SEE SHEET 4

N 00°41'02" W 2614.03' (M)

N 00°30'31" W  
2621.35' (M)

N 00°33'46" W 2639.58' (M)

S. 1/4 COR.  
SEC. 7, T1N, R66W  
FOUND 2" ALUM. CAP  
L.S. NO. 25937

E. 1/16 COR.  
SEC. 7 & SEC. 18, T1N, R66W  
FOUND 2" ALUM. CAP  
L.S. NO. 25937

SW. COR.  
SEC. 7, T1N, R66W  
FOUND 2 1/2" ALUM. CAP  
L.S. NO. 11372

S 88°52'40" W 2771.39' (M)

S 89°04'50" W  
1317.00' (M)

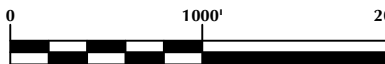
S 89°04'10" W  
1317.17' (M)

SE. COR.  
SEC. 7, T1N, R66W  
FOUND 3 1/4" ALUM. CAP  
L.S. NO. 25942

25'12" 7°55'



NOTE:  
MAGNETIC NORTH IS CURRENT AS OF 5/13/2016.  
MAGNETIC NORTH CHANGES WEST 0°06' PER YEAR.



SCALE: 1" = 1000'

## CERTIFICATE OF SURVEYOR:

THIS IS TO CERTIFY THAT THE ABOVE PLAT WAS PREPARED FROM FIELD NOTES OF ACTUAL SURVEY MADE BY ME OR UNDER MY SUPERVISION AND THAT THE SAME ARE TRUE AND CORRECT TO THE BEST OF MY KNOWLEDGE AND BELIEF. THIS CERTIFICATE DOES NOT REPRESENT A LAND SURVEY PLAT OR IMPROVEMENT SURVEY PLAT AS DEFINED BY C.R.S. 38-51-102 AND CANNOT BE RELIED UPON TO DETERMINE OWNERSHIP.

*Randall K. French*  
PROFESSIONAL LAND SURVEYOR  
COLORADO REGISTRATION NUMBER 38512  
6/27/16

NOTE:  
ACCORDING TO COLORADO STATE LAW YOU MUST COMMENCE ANY LEGAL ACTION BASED UPON ANY DEFECT IN THIS SURVEY WITHIN THREE YEARS AFTER YOU FIRST DISCOVER SUCH DEFECT. IN NO EVENT MAY ANY ACTION BASED UPON ANY DEFECT IN THIS SURVEY BE COMMENCED MORE THAN TEN YEARS FROM THE DATE ON THE CERTIFICATION SHOWN HEREON.

## NOTES:

- ▲ INDICATES SECTION CORNER
- INDICATES CALCULATED CORNER
- ELEVATION BASED ON NAVD88 (GEOID12B)
- BASIS OF BEARING DERIVED FROM COLORADO COORDINATE SYSTEM 1983 NORTH ZONE.
- ALL MEASURED DISTANCES ARE GRID.  
COMBINED SCALE FACTOR: .99972422 CALCULATED FROM THE NW. CORNER OF SECTION 11, T1N, R67W
- OPERATOR: ROB WILSON / PDOP = 1.6
- SEE ADDENDUM TO WELL LOCATION CERTIFICATE FOR EXISTING IMPROVEMENTS WITHIN 500' OF THE WELL PAD.
- WELL FOOTAGES ARE MEASURED AT RIGHT ANGLES TO THE SECTION LINES.
- NO. 1 & NO. 2 AS SHOWN HEREON ARE GOVERNMENT LOTS 1 & 2 OF THE ORIGINAL GLO SURVEY.
- THE BOTTOM OF HOLE BEARS N88°28'04"E, 10597' FROM THE HEEL LOCATION.

## WELL PAD - LEINWEBER FED 31N-8HZ

LEINWEBER FED 4C-8HZ  
WELL LOCATION CERTIFICATE  
458' FNL & 335' FEL NENE (SURFACE)  
LOCATED IN SECTION 11  
1143' FNL & 337' FWL NWNW (HEEL)  
LOCATED IN SECTION 12  
T1N, R67W, 6TH P.M.  
1018' FNL & 249' FWL NWNW (BOTTOM)  
LOCATED IN SECTION 8  
T1N, R66W, 6TH P.M.  
WELD COUNTY, COLORADO

**Kerr-McGee Oil &  
Gas Onshore L.P.**  
1099 18th Street  
Denver, Colorado 80202



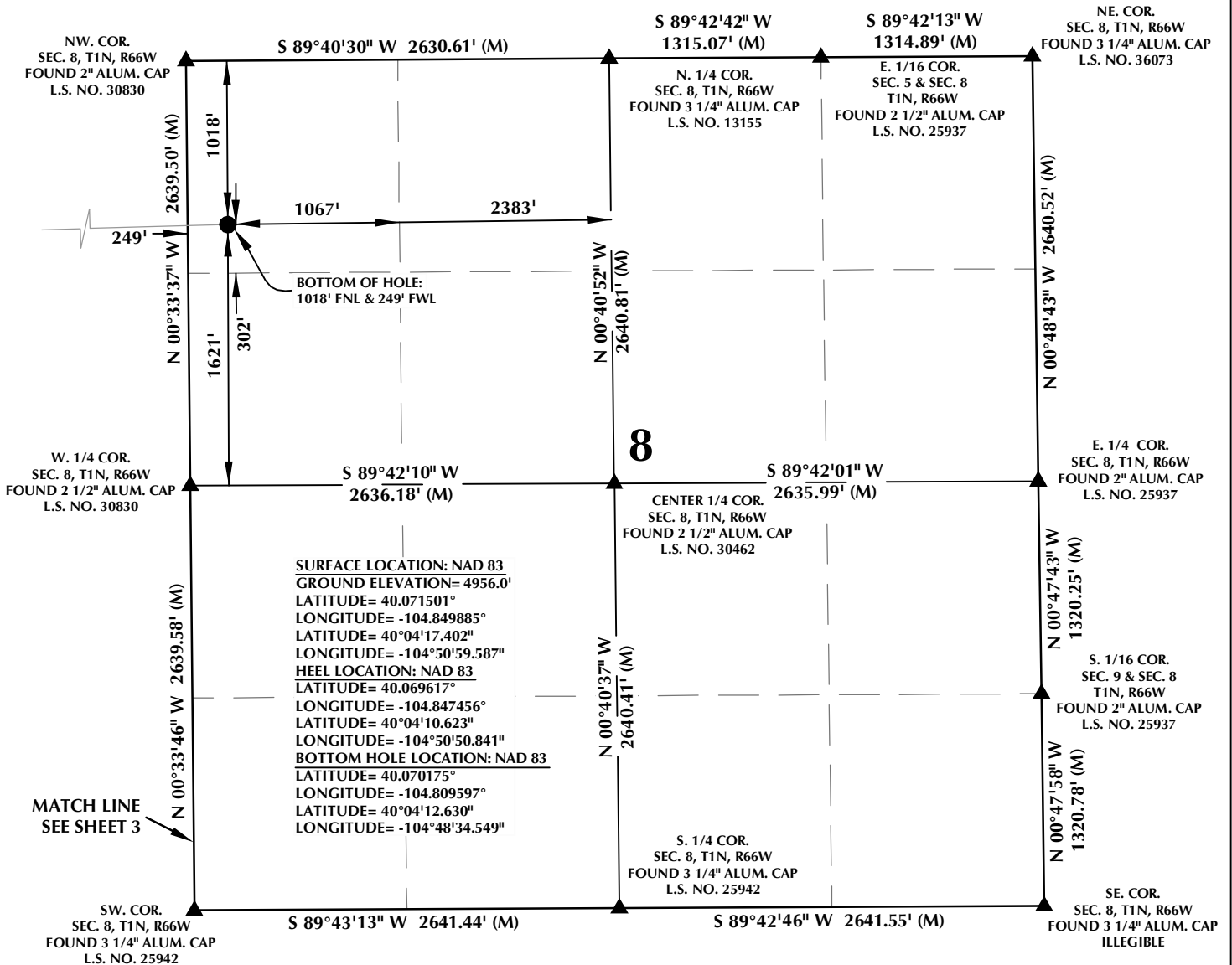
## CONSULTING, LLC

SHERIDAN OFFICE  
1095 Saberton Avenue  
Sheridan, Wyoming 82801  
Phone 307-674-0609

LOVELAND OFFICE  
1635 Foxtrail Drive, Suite 204  
Loveland, Colorado 80538  
Phone 970-776-4331

DRAFTED BY:	LMO	CHECKED BY:	RKF	SHEET NO:
DATE DRAFTED:	6/27/16	DATE SURVEYED:	4/25/16	3
REVISED:		FILE NAME:	16-33	3 OF 4

# T1N, R66W

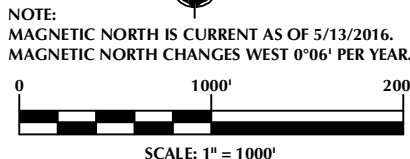
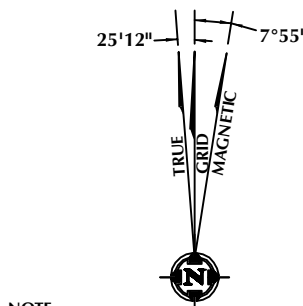


## CERTIFICATE OF SURVEYOR:

THIS IS TO CERTIFY THAT THE ABOVE PLAT WAS PREPARED FROM FIELD NOTES OF ACTUAL SURVEY MADE BY ME OR UNDER MY SUPERVISION AND THAT THE SAME ARE TRUE AND CORRECT TO THE BEST OF MY KNOWLEDGE AND BELIEF. THIS CERTIFICATE DOES NOT REPRESENT A LAND SURVEY PLAT OR IMPROVEMENT SURVEY PLAT AS DEFINED BY C.R.S. 38-51-102 AND CANNOT BE RELIED UPON TO DETERMINE OWNERSHIP.

*Randall K. French*  
 RANDALL K. FRENCH  
 PROFESSIONAL LAND SURVEYOR  
 COLORADO REGISTRATION NUMBER 18512

**NOTE:**  
 ACCORDING TO COLORADO STATE LAW YOU MUST COMMENCE ANY LEGAL ACTION BASED UPON ANY DEFECT IN THIS SURVEY WITHIN THREE YEARS AFTER YOU FIRST DISCOVER SUCH DEFECT. IN NO EVENT MAY ANY ACTION BASED UPON ANY DEFECT IN THIS SURVEY BE COMMENCED MORE THAN TEN YEARS FROM THE DATE ON THE CERTIFICATION SHOWN HEREON.



## NOTES:

- INDICATES SECTION CORNER
- INDICATES CALCULATED CORNER
- ELEVATION BASED ON NAVD88 (GEOID12B)
- BASIS OF BEARING DERIVED FROM COLORADO COORDINATE SYSTEM 1983 NORTH ZONE.
- ALL MEASURED DISTANCES ARE GRID. COMBINED SCALE FACTOR: .99972422 CALCULATED FROM THE NW. CORNER OF SECTION 11, T1N, R67W
- OPERATOR: ROB WILSON / PDOP = 1.6
- SEE ADDENDUM TO WELL LOCATION CERTIFICATE FOR EXISTING IMPROVEMENTS WITHIN 500' OF THE WELL PAD.
- WELL FOOTAGES ARE MEASURED AT RIGHT ANGLES TO THE SECTION LINES.
- THE BOTTOM OF HOLE BEARS N88°28'04"E, 10597' FROM THE HEEL LOCATION.

## WELL PAD - LEINWEBER FED 31N-8HZ

LEINWEBER FED 4C-8HZ  
 WELL LOCATION CERTIFICATE  
 458' FNL & 335' FEL NENE (SURFACE)  
 LOCATED IN SECTION 11  
 1143' FNL & 337' FWL NWNW (HEEL)  
 LOCATED IN SECTION 12  
 T1N, R67W, 6TH P.M.  
 1018' FNL & 249' FWL NWNW (BOTTOM)  
 LOCATED IN SECTION 8  
 T1N, R66W, 6TH P.M.  
 WELD COUNTY, COLORADO

**Kerr-McGee Oil & Gas Onshore L.P.**  
 1099 18th Street  
 Denver, Colorado 80202



## CONSULTING, LLC

**SHERIDAN OFFICE**  
 1095 Saberton Avenue  
 Sheridan, Wyoming 82801  
 Phone 307-674-0609

**LOVELAND OFFICE**  
 1635 Foxtrail Drive, Suite 204  
 Loveland, Colorado 80538  
 Phone 970-776-4331

DRAFTED BY:	LMO	CHECKED BY:	RKF	SHEET NO:
DATE DRAFTED:	6/27/16	DATE SURVEYED:	4/25/16	4
REVISED:		FILE NAME:	16-33	4 OF 4