

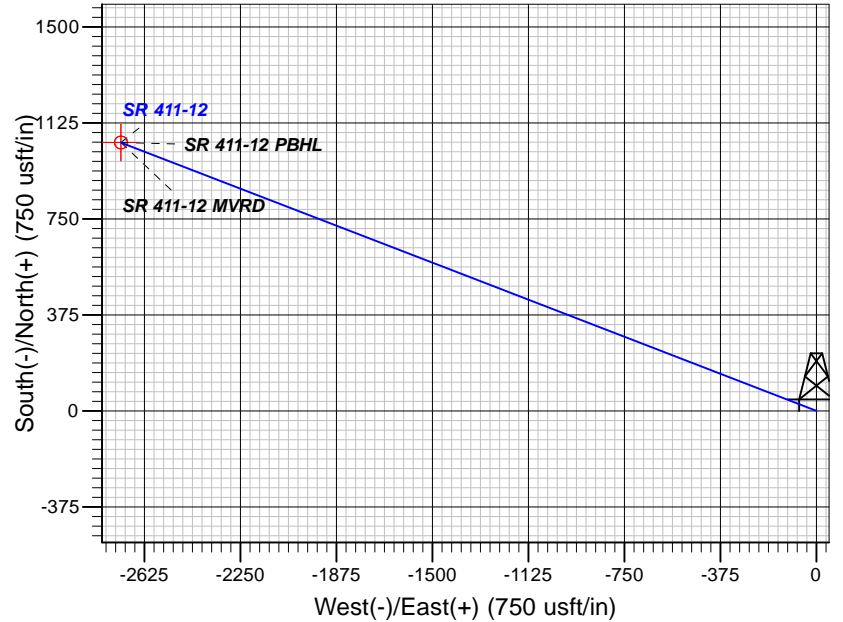
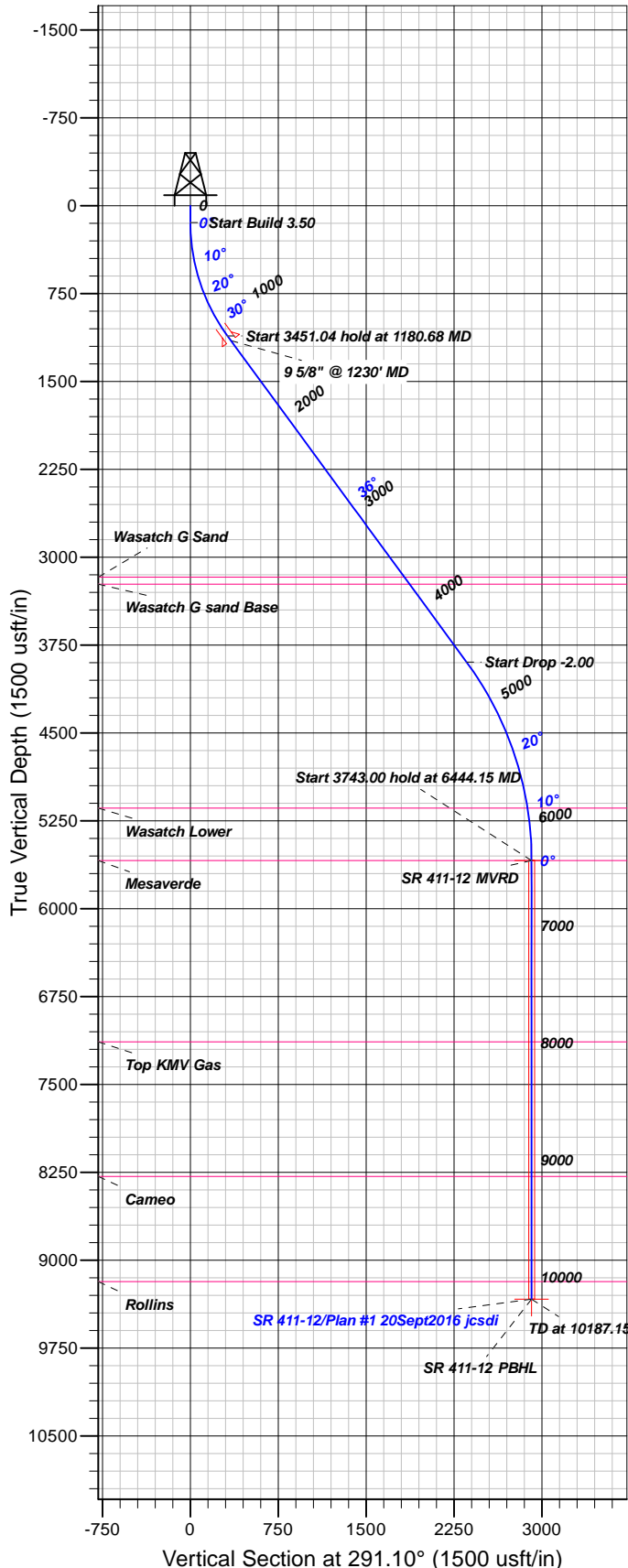
## Well Details: SR 411-12

GL 7254' & RKB 24' @ 7278.00usft (H&P 318)

+N/-S	+E/-W	Northing	Easting	Latitude	Longitude	Slot
0.00	0.00	1599209.50	2341060.20	39.4553612	-107.8339154	A7

**T M** Azimuths to True North  
Magnetic North: 9.60°

Magnetic Field  
Strength: 51598.3snT  
Dip Angle: 65.62°  
Date: 9/19/2016  
Model: BGGM2016



### FORMATION TOP DETAILS

TVDPATH	MDPATH	FORMATION
3171.00	3732.63	Wasatch G Sand
3231.00	3807.03	Wasatch G sand Base
5143.00	5995.31	Wasatch Lower
5590.00	6444.15	Mesaverde
7137.00	7991.15	Top KMV Gas
8287.00	9141.15	Cameo
9183.00	10037.15	Rollins

Plan: Plan #1 20Sept2016 jcsdi

17:52, September 20 2016  
Created By: Janie Collins

PROJECT DETAILS: Garfield County, CO NAD83

Geodetic System: US State Plane 1983  
Datum: North American Datum 1983  
Ellipsoid: GRS 1980  
Zone: Colorado Central Zone

System Datum: Mean Sea Level

### CASING DETAILS

TVDP	MD	Name	Size
1152.73	1230.00	9 5/8" @ 1230' MD	9.62

### SECTION DETAILS

Sec	MD	Inc	Azi	TVD	+N/-S	+E/-W	Dleg	TFace	Vsect	Target
1	0.00	0.00	0.00	0.00	0.00	0.00	0.00	0.00	0.00	
2	145.00	0.00	0.00	145.00	0.00	0.00	0.00	0.00	0.00	
3	1180.68	36.25	291.10	1112.96	114.06	-295.59	3.50	291.10	316.83	
4	4631.72	36.25	291.10	3896.08	848.66	-2199.34	0.00	0.00	2357.40	
5	6444.15	0.00	0.00	5590.00	1048.26	-2716.62	2.00	180.00	2911.85	SR 411-12 MVRD
6	10187.15	0.00	0.00	9333.00	1048.26	-2716.62	0.00	0.00	2911.85	SR 411-12 PBHL

### DESIGN TARGET DETAILS

Name	TVDP	+N/-S	+E/-W	Northing	Easting	Latitude	Longitude	Shape
SR 411-12 MVRD	5590.00	1048.26	-2716.62	1600327.20	2338371.40	39.4582388	-107.8435368	Circle (Radius: 25.00)
- plan hits target center								
SR 411-12 PBHL	9333.00	1048.26	-2716.62	1600327.20	2338371.40	39.4582388	-107.8435368	Point
- plan hits target center								



# **TEP Rocky Mountain LLC**

**Garfield County, CO NAD83**

**RU 32-12 Pad**

**SR 411-12 - Slot A7**

**OH**

**Plan: Plan #1 20Sept2016 jcsdi**

## **Standard Planning Report**

**20 September, 2016**



<b>Database:</b>	Grand Junction District	<b>Local Co-ordinate Reference:</b>	Well SR 411-12 - Slot A7
<b>Company:</b>	TEP Rocky Mountain LLC	<b>TVD Reference:</b>	GL 7254' & RKB 24' @ 7278.00usft (H&P 318)
<b>Project:</b>	Garfield County, CO NAD83	<b>MD Reference:</b>	GL 7254' & RKB 24' @ 7278.00usft (H&P 318)
<b>Site:</b>	RU 32-12 Pad	<b>North Reference:</b>	True
<b>Well:</b>	SR 411-12	<b>Survey Calculation Method:</b>	Minimum Curvature
<b>Wellbore:</b>	OH		
<b>Design:</b>	Plan #1 20Sept2016 jcsdi		

<b>Project</b>	Garfield County, CO NAD83		
<b>Map System:</b>	US State Plane 1983	<b>System Datum:</b>	Mean Sea Level
<b>Geo Datum:</b>	North American Datum 1983		
<b>Map Zone:</b>	Colorado Central Zone		

Site		RU 32-12 Pad			
Site Position:		Northing:	1,599,253.30 usft	Latitude:	39.4554808
From:	Map	Easting:	2,341,050.00 usft	Longitude:	-107.8339555
Position Uncertainty:	0.00 usft	Slot Radius:	13.20 in	Grid Convergence:	-1.47 °

Well	SR 411-12 - Slot A7					
Well Position	+N/-S	-43.52 usft	Northing:	1,599,209.50 usft	Latitude:	39.4553613
	+E/-W	11.32 usft	Easting:	2,341,060.20 usft	Longitude:	-107.8339154
Position Uncertainty		0.00 usft	Wellhead Elevation:	0.00 usft	Ground Level:	7,254.00 usft

<b>Wellbore</b>	OH				
<b>Magnetics</b>	<b>Model Name</b>	<b>Sample Date</b>	<b>Declination (°)</b>	<b>Dip Angle (°)</b>	<b>Field Strength (nT)</b>
	BGGM2016	9/19/2016	9.60	65.62	51,598

<b>Design</b>	Plan #1 20Sept2016 jcsdi			
<b>Audit Notes:</b>				
<b>Version:</b>	<b>Phase:</b>	PLAN	<b>Tie On Depth:</b>	0.00
<b>Vertical Section:</b>	<b>Depth From (TVD) (usft)</b>	<b>+N/-S (usft)</b>	<b>+E/-W (usft)</b>	<b>Direction (°)</b>
	0.00	0.00	0.00	291.10

<b>Plan Sections</b>										
Measured Depth (usft)	Inclination (°)	Azimuth (°)	Vertical Depth (usft)	+N/-S (usft)	+E/-W (usft)	Dogleg Rate (°/100usft)	Build Rate (°/100usft)	Turn Rate (°/100usft)	TFO (°)	Target
0.00	0.00	0.00	0.00	0.00	0.00	0.00	0.00	0.00	0.00	
145.00	0.00	0.00	145.00	0.00	0.00	0.00	0.00	0.00	0.00	
1,180.68	36.25	291.10	1,112.96	114.06	-295.59	3.50	3.50	0.00	291.10	
4,631.72	36.25	291.10	3,896.08	848.66	-2,199.34	0.00	0.00	0.00	0.00	
6,444.15	0.00	0.00	5,590.00	1,048.26	-2,716.62	2.00	-2.00	0.00	180.00	SR 411-12 MVRD
10,187.15	0.00	0.00	9,333.00	1,048.26	-2,716.62	0.00	0.00	0.00	0.00	SR 411-12 PBHL

<b>Database:</b>	Grand Junction District	<b>Local Co-ordinate Reference:</b>	Well SR 411-12 - Slot A7
<b>Company:</b>	TEP Rocky Mountain LLC	<b>TVD Reference:</b>	GL 7254' & RKB 24' @ 7278.00usft (H&P 318)
<b>Project:</b>	Garfield County, CO NAD83	<b>MD Reference:</b>	GL 7254' & RKB 24' @ 7278.00usft (H&P 318)
<b>Site:</b>	RU 32-12 Pad	<b>North Reference:</b>	True
<b>Well:</b>	SR 411-12	<b>Survey Calculation Method:</b>	Minimum Curvature
<b>Wellbore:</b>	OH		
<b>Design:</b>	Plan #1 20Sept2016 jcsdi		

Planned Survey										
Measured Depth (usft)	Inclination (°)	Azimuth (°)	Vertical Depth (usft)	+N/-S (usft)	+E/-W (usft)	Vertical Section (usft)	Dogleg Rate (°/100usft)	Build Rate (°/100usft)	Turn Rate (°/100usft)	
0.00	0.00	0.00	0.00	0.00	0.00	0.00	0.00	0.00	0.00	
100.00	0.00	0.00	100.00	0.00	0.00	0.00	0.00	0.00	0.00	
145.00	0.00	0.00	145.00	0.00	0.00	0.00	0.00	0.00	0.00	
200.00	1.93	291.10	199.99	0.33	-0.86	0.92	3.50	3.50	0.00	
300.00	5.43	291.10	299.77	2.64	-6.84	7.33	3.50	3.50	0.00	
400.00	8.93	291.10	398.97	7.14	-18.49	19.82	3.50	3.50	0.00	
500.00	12.43	291.10	497.22	13.80	-35.77	38.34	3.50	3.50	0.00	
600.00	15.93	291.10	594.16	22.62	-58.61	62.83	3.50	3.50	0.00	
700.00	19.43	291.10	689.43	33.55	-86.94	93.18	3.50	3.50	0.00	
800.00	22.93	291.10	782.66	46.55	-120.63	129.30	3.50	3.50	0.00	
900.00	26.43	291.10	873.52	61.57	-159.57	171.04	3.50	3.50	0.00	
1,000.00	29.93	291.10	961.65	78.57	-203.62	218.25	3.50	3.50	0.00	
1,100.00	33.43	291.10	1,046.75	97.47	-252.60	270.75	3.50	3.50	0.00	
1,180.68	36.25	291.10	1,112.96	114.06	-295.59	316.83	3.50	3.50	0.00	
1,200.00	36.25	291.10	1,128.54	118.17	-306.25	328.26	0.00	0.00	0.00	
1,230.00	36.25	291.10	1,152.73	124.56	-322.80	346.00	0.00	0.00	0.00	
<b>9 5/8" @ 1230' MD</b>										
1,300.00	36.25	291.10	1,209.19	139.46	-361.41	387.39	0.00	0.00	0.00	
1,400.00	36.25	291.10	1,289.83	160.74	-416.58	446.52	0.00	0.00	0.00	
1,500.00	36.25	291.10	1,370.48	182.03	-471.74	505.65	0.00	0.00	0.00	
1,600.00	36.25	291.10	1,451.12	203.32	-526.91	564.77	0.00	0.00	0.00	
1,700.00	36.25	291.10	1,531.77	224.60	-582.07	623.90	0.00	0.00	0.00	
1,800.00	36.25	291.10	1,612.42	245.89	-637.24	683.03	0.00	0.00	0.00	
1,900.00	36.25	291.10	1,693.06	267.18	-692.40	742.16	0.00	0.00	0.00	
2,000.00	36.25	291.10	1,773.71	288.46	-747.57	801.29	0.00	0.00	0.00	
2,100.00	36.25	291.10	1,854.35	309.75	-802.73	860.42	0.00	0.00	0.00	
2,200.00	36.25	291.10	1,935.00	331.04	-857.90	919.55	0.00	0.00	0.00	
2,300.00	36.25	291.10	2,015.64	352.32	-913.06	978.68	0.00	0.00	0.00	
2,400.00	36.25	291.10	2,096.29	373.61	-968.23	1,037.81	0.00	0.00	0.00	
2,500.00	36.25	291.10	2,176.94	394.89	-1,023.39	1,096.94	0.00	0.00	0.00	
2,600.00	36.25	291.10	2,257.58	416.18	-1,078.55	1,156.06	0.00	0.00	0.00	
2,700.00	36.25	291.10	2,338.23	437.47	-1,133.72	1,215.19	0.00	0.00	0.00	
2,800.00	36.25	291.10	2,418.87	458.75	-1,188.88	1,274.32	0.00	0.00	0.00	
2,900.00	36.25	291.10	2,499.52	480.04	-1,244.05	1,333.45	0.00	0.00	0.00	
3,000.00	36.25	291.10	2,580.17	501.33	-1,299.21	1,392.58	0.00	0.00	0.00	
3,100.00	36.25	291.10	2,660.81	522.61	-1,354.38	1,451.71	0.00	0.00	0.00	
3,200.00	36.25	291.10	2,741.46	543.90	-1,409.54	1,510.84	0.00	0.00	0.00	
3,300.00	36.25	291.10	2,822.10	565.19	-1,464.71	1,569.97	0.00	0.00	0.00	
3,400.00	36.25	291.10	2,902.75	586.47	-1,519.87	1,629.10	0.00	0.00	0.00	
3,500.00	36.25	291.10	2,983.39	607.76	-1,575.04	1,688.23	0.00	0.00	0.00	
3,600.00	36.25	291.10	3,064.04	629.04	-1,630.20	1,747.36	0.00	0.00	0.00	
3,700.00	36.25	291.10	3,144.69	650.33	-1,685.37	1,806.48	0.00	0.00	0.00	
3,732.63	36.25	291.10	3,171.00	657.28	-1,703.36	1,825.78	0.00	0.00	0.00	
<b>Wasatch G Sand</b>										
3,800.00	36.25	291.10	3,225.33	671.62	-1,740.53	1,865.61	0.00	0.00	0.00	
3,807.03	36.25	291.10	3,231.00	673.11	-1,744.41	1,869.77	0.00	0.00	0.00	
<b>Wasatch G sand Base</b>										
3,900.00	36.25	291.10	3,305.98	692.90	-1,795.69	1,924.74	0.00	0.00	0.00	
4,000.00	36.25	291.10	3,386.62	714.19	-1,850.86	1,983.87	0.00	0.00	0.00	
4,100.00	36.25	291.10	3,467.27	735.48	-1,906.02	2,043.00	0.00	0.00	0.00	
4,200.00	36.25	291.10	3,547.92	756.76	-1,961.19	2,102.13	0.00	0.00	0.00	
4,300.00	36.25	291.10	3,628.56	778.05	-2,016.35	2,161.26	0.00	0.00	0.00	

<b>Database:</b>	Grand Junction District	<b>Local Co-ordinate Reference:</b>	Well SR 411-12 - Slot A7
<b>Company:</b>	TEP Rocky Mountain LLC	<b>TVD Reference:</b>	GL 7254' & RKB 24' @ 7278.00usft (H&P 318)
<b>Project:</b>	Garfield County, CO NAD83	<b>MD Reference:</b>	GL 7254' & RKB 24' @ 7278.00usft (H&P 318)
<b>Site:</b>	RU 32-12 Pad	<b>North Reference:</b>	True
<b>Well:</b>	SR 411-12	<b>Survey Calculation Method:</b>	Minimum Curvature
<b>Wellbore:</b>	OH		
<b>Design:</b>	Plan #1 20Sept2016 jcsdi		

Planned Survey									
Measured Depth (usft)	Inclination (°)	Azimuth (°)	Vertical Depth (usft)	+N/-S (usft)	+E/-W (usft)	Vertical Section (usft)	Dogleg Rate (°/100usft)	Build Rate (°/100usft)	Turn Rate (°/100usft)
4,400.00	36.25	291.10	3,709.21	799.33	-2,071.52	2,220.39	0.00	0.00	0.00
4,500.00	36.25	291.10	3,789.85	820.62	-2,126.68	2,279.52	0.00	0.00	0.00
4,600.00	36.25	291.10	3,870.50	841.91	-2,181.85	2,338.65	0.00	0.00	0.00
4,631.72	36.25	291.10	3,896.08	848.66	-2,199.34	2,357.40	0.00	0.00	0.00
4,700.00	34.88	291.10	3,951.62	862.96	-2,236.40	2,397.12	2.00	-2.00	0.00
4,800.00	32.88	291.10	4,034.63	883.02	-2,288.41	2,452.86	2.00	-2.00	0.00
4,900.00	30.88	291.10	4,119.54	902.04	-2,337.68	2,505.68	2.00	-2.00	0.00
5,000.00	28.88	291.10	4,206.24	919.97	-2,384.16	2,555.50	2.00	-2.00	0.00
5,100.00	26.88	291.10	4,294.63	936.81	-2,427.79	2,602.26	2.00	-2.00	0.00
5,200.00	24.88	291.10	4,384.59	952.52	-2,468.51	2,645.91	2.00	-2.00	0.00
5,300.00	22.88	291.10	4,476.03	967.10	-2,506.28	2,686.40	2.00	-2.00	0.00
5,400.00	20.88	291.10	4,568.82	980.51	-2,541.05	2,723.67	2.00	-2.00	0.00
5,500.00	18.88	291.10	4,662.85	992.76	-2,572.78	2,757.68	2.00	-2.00	0.00
5,600.00	16.88	291.10	4,758.01	1,003.81	-2,601.43	2,788.38	2.00	-2.00	0.00
5,700.00	14.88	291.10	4,854.19	1,013.66	-2,626.96	2,815.75	2.00	-2.00	0.00
5,800.00	12.88	291.10	4,951.27	1,022.30	-2,649.35	2,839.74	2.00	-2.00	0.00
5,900.00	10.88	291.10	5,049.12	1,029.71	-2,668.56	2,860.33	2.00	-2.00	0.00
5,995.31	8.98	291.10	5,143.00	1,035.63	-2,683.89	2,876.77	2.00	-2.00	0.00
<b>Wasatch Lower</b>									
6,000.00	8.88	291.10	5,147.63	1,035.89	-2,684.57	2,877.49	2.00	-2.00	0.00
6,100.00	6.88	291.10	5,246.68	1,040.83	-2,697.36	2,891.21	2.00	-2.00	0.00
6,200.00	4.88	291.10	5,346.15	1,044.52	-2,706.92	2,901.46	2.00	-2.00	0.00
6,300.00	2.88	291.10	5,445.91	1,046.96	-2,713.24	2,908.23	2.00	-2.00	0.00
6,400.00	0.88	291.10	5,545.85	1,048.14	-2,716.31	2,911.51	2.00	-2.00	0.00
6,444.15	0.00	0.00	5,590.00	1,048.26	-2,716.62	2,911.85	2.00	-2.00	0.00
<b>Mesaverde - SR 411-12 MVRD</b>									
6,500.00	0.00	0.00	5,645.85	1,048.26	-2,716.62	2,911.85	0.00	0.00	0.00
6,600.00	0.00	0.00	5,745.85	1,048.26	-2,716.62	2,911.85	0.00	0.00	0.00
6,700.00	0.00	0.00	5,845.85	1,048.26	-2,716.62	2,911.85	0.00	0.00	0.00
6,800.00	0.00	0.00	5,945.85	1,048.26	-2,716.62	2,911.85	0.00	0.00	0.00
6,900.00	0.00	0.00	6,045.85	1,048.26	-2,716.62	2,911.85	0.00	0.00	0.00
7,000.00	0.00	0.00	6,145.85	1,048.26	-2,716.62	2,911.85	0.00	0.00	0.00
7,100.00	0.00	0.00	6,245.85	1,048.26	-2,716.62	2,911.85	0.00	0.00	0.00
7,200.00	0.00	0.00	6,345.85	1,048.26	-2,716.62	2,911.85	0.00	0.00	0.00
7,300.00	0.00	0.00	6,445.85	1,048.26	-2,716.62	2,911.85	0.00	0.00	0.00
7,400.00	0.00	0.00	6,545.85	1,048.26	-2,716.62	2,911.85	0.00	0.00	0.00
7,500.00	0.00	0.00	6,645.85	1,048.26	-2,716.62	2,911.85	0.00	0.00	0.00
7,600.00	0.00	0.00	6,745.85	1,048.26	-2,716.62	2,911.85	0.00	0.00	0.00
7,700.00	0.00	0.00	6,845.85	1,048.26	-2,716.62	2,911.85	0.00	0.00	0.00
7,800.00	0.00	0.00	6,945.85	1,048.26	-2,716.62	2,911.85	0.00	0.00	0.00
7,900.00	0.00	0.00	7,045.85	1,048.26	-2,716.62	2,911.85	0.00	0.00	0.00
7,991.15	0.00	0.00	7,137.00	1,048.26	-2,716.62	2,911.85	0.00	0.00	0.00
<b>Top KMV Gas</b>									
8,000.00	0.00	0.00	7,145.85	1,048.26	-2,716.62	2,911.85	0.00	0.00	0.00
8,100.00	0.00	0.00	7,245.85	1,048.26	-2,716.62	2,911.85	0.00	0.00	0.00
8,200.00	0.00	0.00	7,345.85	1,048.26	-2,716.62	2,911.85	0.00	0.00	0.00
8,300.00	0.00	0.00	7,445.85	1,048.26	-2,716.62	2,911.85	0.00	0.00	0.00
8,400.00	0.00	0.00	7,545.85	1,048.26	-2,716.62	2,911.85	0.00	0.00	0.00
8,500.00	0.00	0.00	7,645.85	1,048.26	-2,716.62	2,911.85	0.00	0.00	0.00
8,600.00	0.00	0.00	7,745.85	1,048.26	-2,716.62	2,911.85	0.00	0.00	0.00
8,700.00	0.00	0.00	7,845.85	1,048.26	-2,716.62	2,911.85	0.00	0.00	0.00

<b>Database:</b>	Grand Junction District	<b>Local Co-ordinate Reference:</b>	Well SR 411-12 - Slot A7
<b>Company:</b>	TEP Rocky Mountain LLC	<b>TVD Reference:</b>	GL 7254' & RKB 24' @ 7278.00usft (H&P 318)
<b>Project:</b>	Garfield County, CO NAD83	<b>MD Reference:</b>	GL 7254' & RKB 24' @ 7278.00usft (H&P 318)
<b>Site:</b>	RU 32-12 Pad	<b>North Reference:</b>	True
<b>Well:</b>	SR 411-12	<b>Survey Calculation Method:</b>	Minimum Curvature
<b>Wellbore:</b>	OH		
<b>Design:</b>	Plan #1 20Sept2016 jcsdi		

Planned Survey										
Measured Depth (usft)	Inclination (°)	Azimuth (°)	Vertical Depth (usft)	+N/-S (usft)	+E/-W (usft)	Vertical Section (usft)	Dogleg Rate (°/100usft)	Build Rate (°/100usft)	Turn Rate (°/100usft)	
8,800.00	0.00	0.00	7,945.85	1,048.26	-2,716.62	2,911.85	0.00	0.00	0.00	
8,900.00	0.00	0.00	8,045.85	1,048.26	-2,716.62	2,911.85	0.00	0.00	0.00	
9,000.00	0.00	0.00	8,145.85	1,048.26	-2,716.62	2,911.85	0.00	0.00	0.00	
9,100.00	0.00	0.00	8,245.85	1,048.26	-2,716.62	2,911.85	0.00	0.00	0.00	
9,141.15	0.00	0.00	8,287.00	1,048.26	-2,716.62	2,911.85	0.00	0.00	0.00	
Cameo										
9,200.00	0.00	0.00	8,345.85	1,048.26	-2,716.62	2,911.85	0.00	0.00	0.00	
9,300.00	0.00	0.00	8,445.85	1,048.26	-2,716.62	2,911.85	0.00	0.00	0.00	
9,400.00	0.00	0.00	8,545.85	1,048.26	-2,716.62	2,911.85	0.00	0.00	0.00	
9,500.00	0.00	0.00	8,645.85	1,048.26	-2,716.62	2,911.85	0.00	0.00	0.00	
9,600.00	0.00	0.00	8,745.85	1,048.26	-2,716.62	2,911.85	0.00	0.00	0.00	
9,700.00	0.00	0.00	8,845.85	1,048.26	-2,716.62	2,911.85	0.00	0.00	0.00	
9,800.00	0.00	0.00	8,945.85	1,048.26	-2,716.62	2,911.85	0.00	0.00	0.00	
9,900.00	0.00	0.00	9,045.85	1,048.26	-2,716.62	2,911.85	0.00	0.00	0.00	
10,000.00	0.00	0.00	9,145.85	1,048.26	-2,716.62	2,911.85	0.00	0.00	0.00	
10,037.15	0.00	0.00	9,183.00	1,048.26	-2,716.62	2,911.85	0.00	0.00	0.00	
Rollins										
10,100.00	0.00	0.00	9,245.85	1,048.26	-2,716.62	2,911.85	0.00	0.00	0.00	
10,187.15	0.00	0.00	9,333.00	1,048.26	-2,716.62	2,911.85	0.00	0.00	0.00	
SR 411-12 PBHL										

Design Targets										
Target Name	Dip Angle (°)	Dip Dir. (°)	TVD (usft)	+N/-S (usft)	+E/-W (usft)	Northing (usft)	Easting (usft)	Latitude	Longitude	
- hit/miss target										
- Shape										
SR 411-12 MVRD	0.00	0.00	5,590.00	1,048.26	-2,716.62	1,600,327.20	2,338,371.40	39.4582389	-107.8435368	
- plan hits target center										
- Circle (radius 25.00)										
SR 411-12 PBHL	0.00	0.00	9,333.00	1,048.26	-2,716.62	1,600,327.20	2,338,371.40	39.4582389	-107.8435368	
- plan hits target center										
- Point										

Casing Points						
Measured Depth (usft)	Vertical Depth (usft)	Name	Casing Diameter (in)	Hole Diameter (in)		
1,230.00	1,152.73	9 5/8" @ 1230' MD	9.62	9.62		

<b>Database:</b>	Grand Junction District	<b>Local Co-ordinate Reference:</b>	Well SR 411-12 - Slot A7
<b>Company:</b>	TEP Rocky Mountain LLC	<b>TVD Reference:</b>	GL 7254' & RKB 24' @ 7278.00usft (H&P 318)
<b>Project:</b>	Garfield County, CO NAD83	<b>MD Reference:</b>	GL 7254' & RKB 24' @ 7278.00usft (H&P 318)
<b>Site:</b>	RU 32-12 Pad	<b>North Reference:</b>	True
<b>Well:</b>	SR 411-12	<b>Survey Calculation Method:</b>	Minimum Curvature
<b>Wellbore:</b>	OH		
<b>Design:</b>	Plan #1 20Sept2016 jcsdi		

Formations					
Measured Depth (usft)	Vertical Depth (usft)	Name	Lithology	Dip (°)	Dip Direction (°)
3,732.63	3,171.00	Wasatch G Sand		0.00	0.00
3,807.03	3,231.00	Wasatch G sand Base		0.00	0.00
5,995.31	5,143.00	Wasatch Lower		0.00	0.00
6,444.15	5,590.00	Mesaverde		0.00	0.00
7,991.15	7,137.00	Top KMV Gas		0.00	0.00
9,141.15	8,287.00	Cameo		0.00	0.00
10,037.15	9,183.00	Rollins		0.00	0.00