

T7N, R66W, 6th P.M.

GREAT WESTERN OPERATING COMPANY

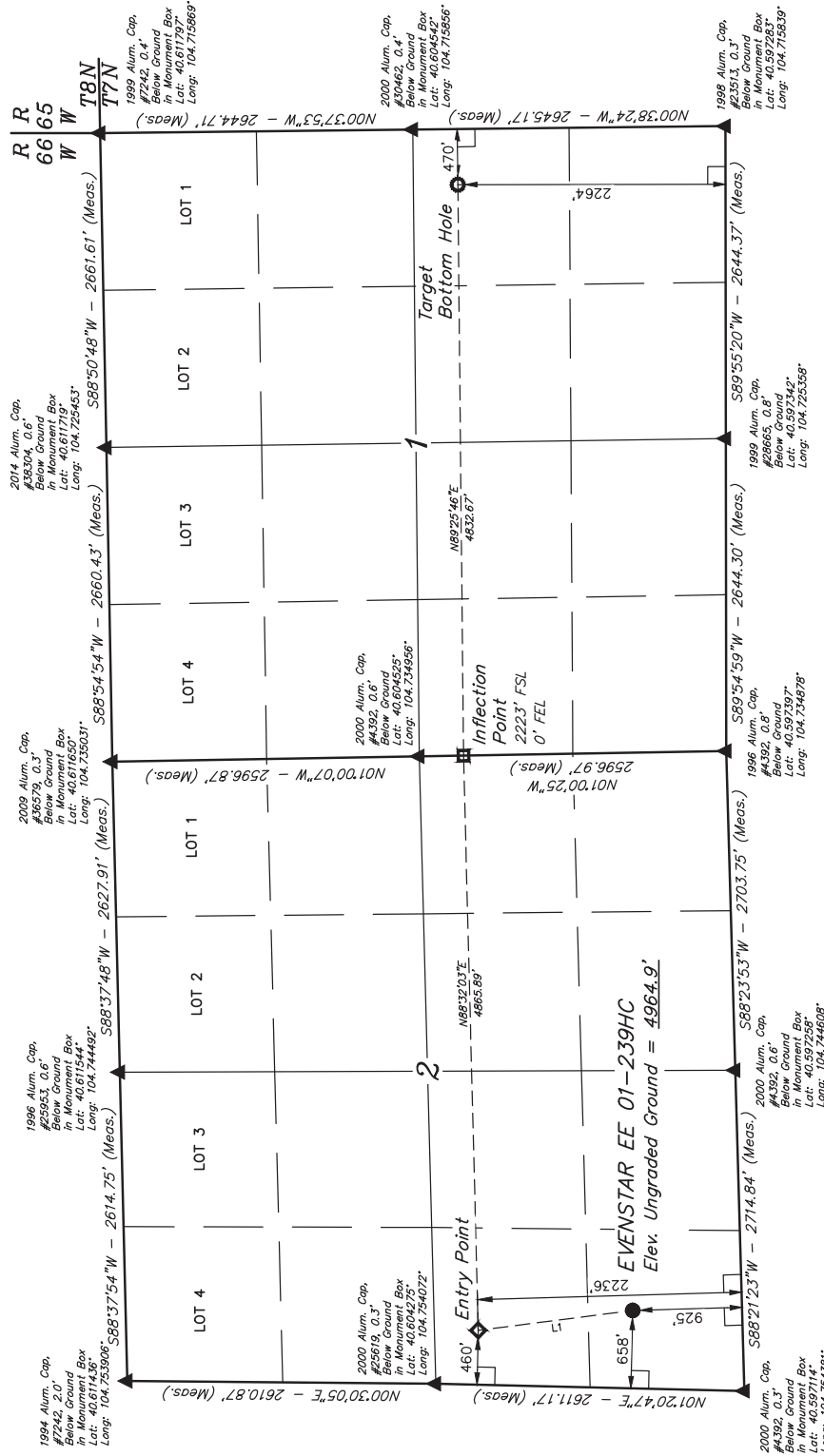
EVENSTAR EE 01-239HC
SW 1/4 SW 1/4, SECTION 2, 17N, R66W, 6th P.M.
WELD COUNTY, COLORADO

BASIS OF BEARINGS

BASIS OF ELEVATION

USGS COOPERATIVE BASE NETWORK CONTROL STATION:
DESIGNATION "VERMILYEA"; NGS DATA SHEET LISTS THE NAVD
88 ELEVATION AS BEING 5026 FEET.

N



LINE TABLE		
LINE	DIRECTION	LENGTH
L1	N07°18'55"W	1317.44'

LEGEND:

- 90° SYMBOL
- PROPOSED WELLHEAD.
- ENTRY POINT.
- INFLECTION POINT.
- TARGET BOTTOM HOLE.
- SECTION CORNERS LOCATED. (NAD 83)

PDOP = 1.2

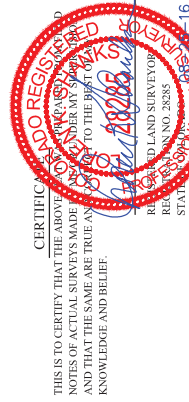
JUNTAH
ENGINEERING & LAND SURVEYING

UELS, LLC

Corporate Office * 85 South 200 East
Vernal, UT 84078 * (435) 789-1017

NAD 83 (SURFACE LOCATION)	NAD 83 (INFLECTION POINT)	NAD 83 (TARGET BOTTOM HOLE)
LATITUDE = 40°33'58.38" (40.59689)	LATITUDE = 40°36'12.59" (40.603497)	LATITUDE = 40°36'12.62" (40.603506)
LONGITUDE = 104°45'06.83" (104.751897)	LONGITUDE = 104°43'08.85" (104.725458)	LONGITUDE = 104°43'03.16" (104.717544)
NAD 27 (SURFACE LOCATION)	NAD 27 (INFLECTION POINT)	NAD 27 (TARGET BOTTOM HOLE)
LATITUDE = 40°33'58.35" (40.599708)	LATITUDE = 40°36'11.87" (40.603517)	LATITUDE = 40°36'12.69" (40.603525)
LONGITUDE = 104°45'04.95" (104.751375)	LONGITUDE = 104°43'03.92" (104.734422)	LONGITUDE = 104°43'01.29" (104.717025)

WELL LOCATION PLAT



REV: 2 08-24-16 K.B. (SL MOVE)