

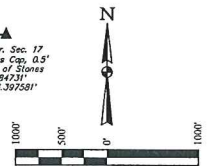
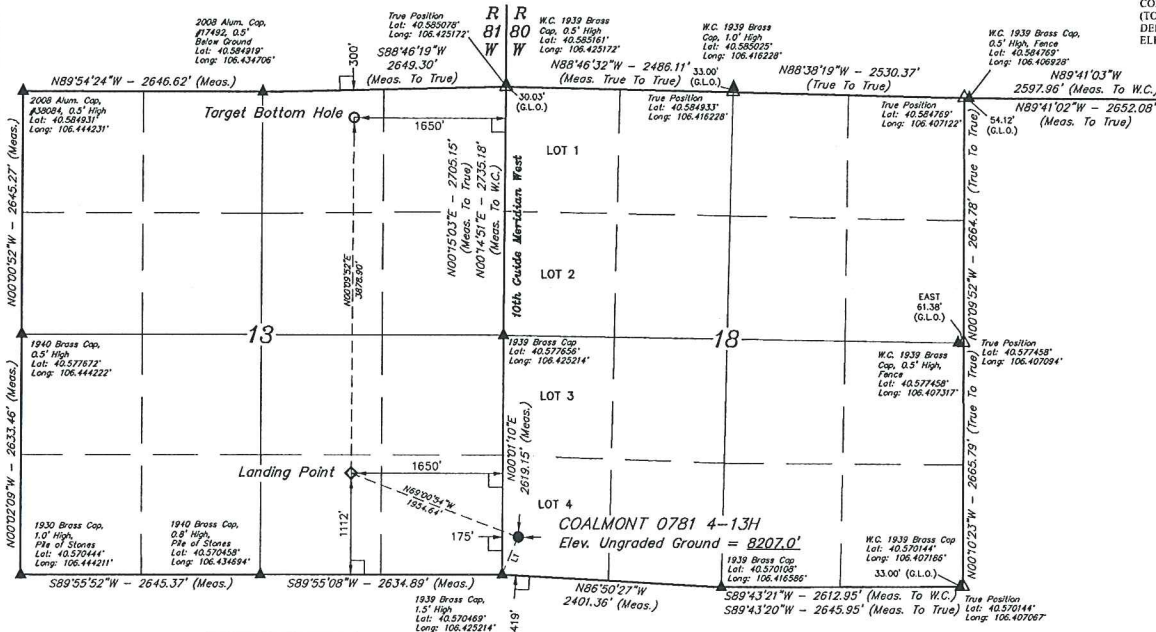
T7N, R80W, 6th P.M.

SandRidge Exploration & Production, LLC

COALMONT 0781 4-13H
LOT 4, SECTION 18, T7N, R80W, 6th P.M.
JACKSON COUNTY, COLORADO

BASIS OF BEARINGS
BASIS OF ELEVATION

SPOT ELEVATION AT THE SOUTHEAST CORNER OF SECTION 39,
T7N, R80W, 6th P.M., TAKEN FROM THE COALMONT QUADRANGLE,
COLORADO, JACKSON COUNTY 7.5 MINUTE QUAD.
(TOPOGRAPHIC MAP) PUBLISHED BY THE UNITED STATES
DEPARTMENT OF THE INTERIOR, GEOLOGICAL SURVEY. SAID
ELEVATION IS MARKED AS BEING 8156 FEET



LINE TABLE		
LINE	DIRECTION	LENGTH
L1	N23°08'00"E	445.76'

LEGEND:
 ○ = 90° SYMBOL
 ● = PROPOSED WELLHEAD
 ○ = LANDING POINT
 ○ = TARGET BOTTOM HOLE
 ▲ = SECTION CORNERS LOCATED, (NAD 83)
 △ = SECTION CORNERS RE-ESTABLISHED,
 (Not Set on Grounds) (NAD 83)

PDOP = 1.4		
NAD 83 (SURFACE LOCATION)	NAD 83 (LANDING POINT)	NAD 83 (TARGET BOTTOM HOLE)
LATITUDE = 40°34'17.74" (40.571594)	LATITUDE = 40°34'24.65" (40.573514)	LATITUDE = 40°35'02.96" (40.584156)
LONGITUDE = 106°25'28.50" (106.424583)	LONGITUDE = 106°25'32.14" (106.431150)	LONGITUDE = 106°25'52.02" (106.431117)
NAD 27 (SURFACE LOCATION)	NAD 27 (LANDING POINT)	NAD 27 (TARGET BOTTOM HOLE)
LATITUDE = 40°34'17.82" (40.571617)	LATITUDE = 40°34'24.75" (40.573530)	LATITUDE = 40°35'03.04" (40.584178)
LONGITUDE = 106°25'26.39" (106.423997)	LONGITUDE = 106°25'30.03" (106.430564)	LONGITUDE = 106°25'49.90" (106.430228)
STATE PLANE NAD 83 (CO. NORTH)	STATE PLANE NAD 83 (CO. NORTH)	STATE PLANE NAD 83 (CO. NORTH)
N: 452412.20 E: 274150.32	N: 453130.43 E: 274133.29	N: 457002.39 E: 274138.85
STATE PLANE NAD 27 (CO. NORTH)	STATE PLANE NAD 27 (CO. NORTH)	STATE PLANE NAD 27 (CO. NORTH)
N: 452410.03 E: 1743306.66	N: 453128.25 E: 1741489.64	N: 457005.22 E: 1741540.16

THIS IS TO CERTIFY THAT THE ABOVE
NOTES OF ACTUAL SURVEYS MADE BY ME OR UNDER MY SUPERVISION
AND THAT THE SAME ARE TRUE AND CORRECT TO THE BEST OF MY
KNOWLEDGE AND BELIEF

CERTIFICATE OF REGISTRATION
 STATE OF COLORADO
 REGISTERED LAND SURVEYOR
 REBECCA L. SHANKS, No. 38285
 STATE OF COLORADO, 16

REV: 4 07-14-16 M.D. (WELL NAME CHANGE)

WELL LOCATION PLAT		
SURVEYED BY	DARREN SHANKS, G.W.	06-10-16
DRAWN BY	T.B.	06-16-16
SCALE		1" = 1000'

UELS, LLC
Corporate Office • 85 South 200 East
Vernal, UT 84078 • (435) 789-1017