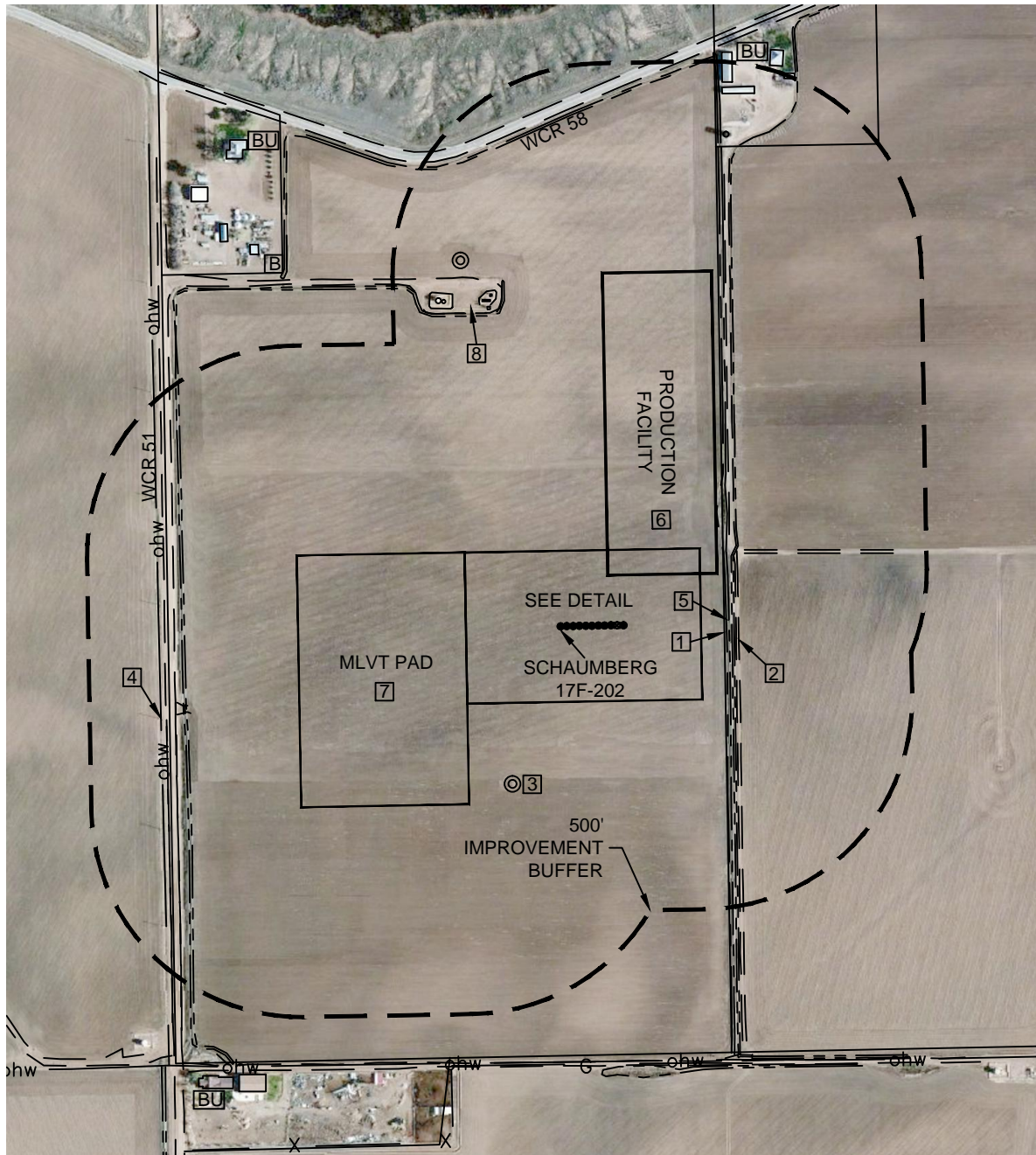




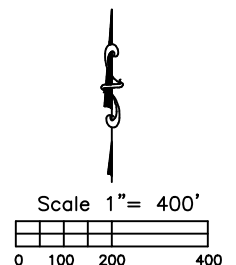
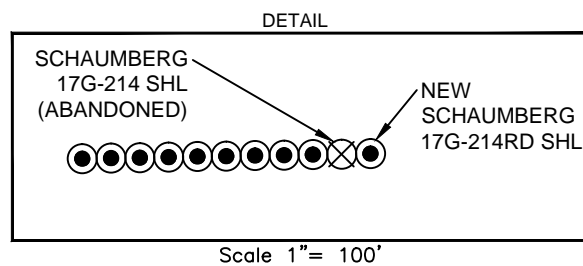
Washburn Land Surveying
www.WashburnSurveying.com
970-232-9645

LOCATION DRAWING SCHAUMBERG 5N64W17A PAD

SECTION: 17
TOWNSHIP: 5N
RANGE: 64W
6TH P.M.
WELD COUNTY, CO



- LEGEND:**
- ohw — OVERHEAD UTILITY LINE
 - — — — — EDGE OF ROAD/ACCESS
 - — — — — TOP OF BANK
 - X — — — — FENCE LINE
 - — — — — PROPERTY LINE





Washburn Land Surveying
www.WashburnSurveying.com
970-232-9645

LOCATION DRAWING SCHAUMBERG 5N64W17A PAD

SECTION: 17
TOWNSHIP: 5N
RANGE: 64W
6TH P.M.
WELD COUNTY, CO

IMPROVEMENTS (MEASUREMENTS ARE FROM THE PROPOSED SCHAUMBERG 17F-202 WELL LOCATION)

- [BU] BUILDING UNIT: 1328' SW, 1347' NW & 1427' NE
- [B] BUILDING: 1141' NW, 1212' NW, 1278' SW, 1316' NW & 1327' NE
- [1] PROPERTY LINE: 390' E, 1023' S & 936' W
- [2] ACCESS: 419' E, 772' NW, 920' W (WCR 51) & 1146' NW
- [3] EXISTING WELL: 393' SW (SCHAUMBERG 12-17), 904' NW (SCHAUMBERG #1)
- [4] OVERHEAD UTILITY LINE: 957' W, 1038' S
- [5] DITCH: 395' E, 409' E, 761' NW, 896' W & 1128' NW
- [6] PROPOSED PRODUCTION FACILITIES: 166' NE
- [7] PROPOSED TEMPORARY MLVT PAD: 225' W
- [8] EXISTING FACILITIES: 780' NW