

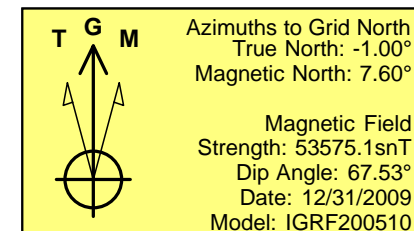
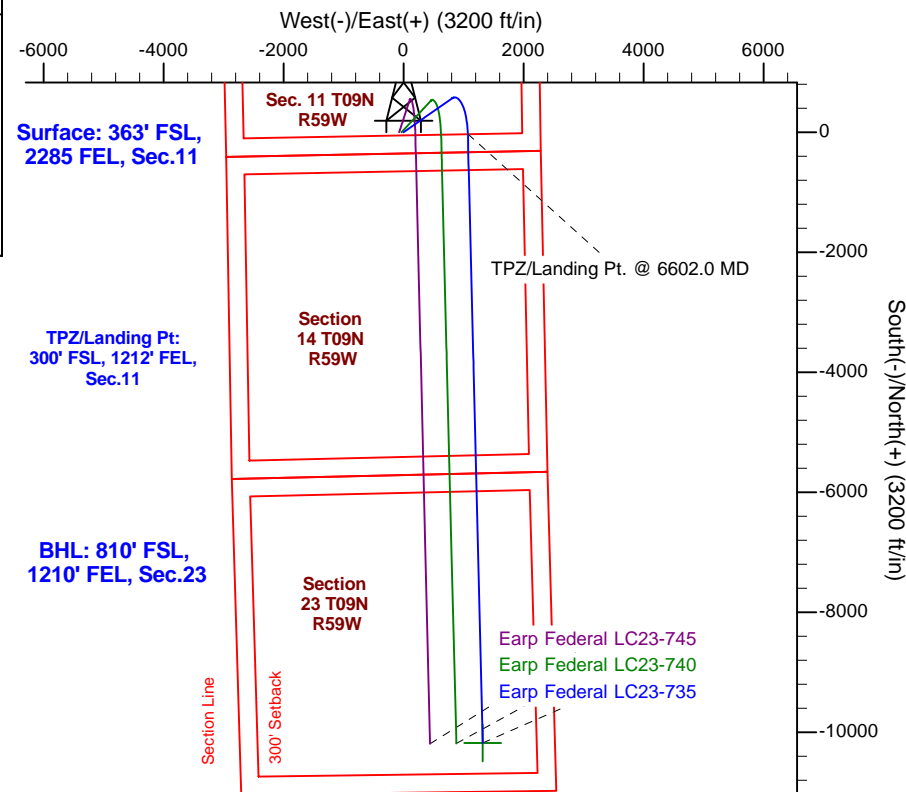
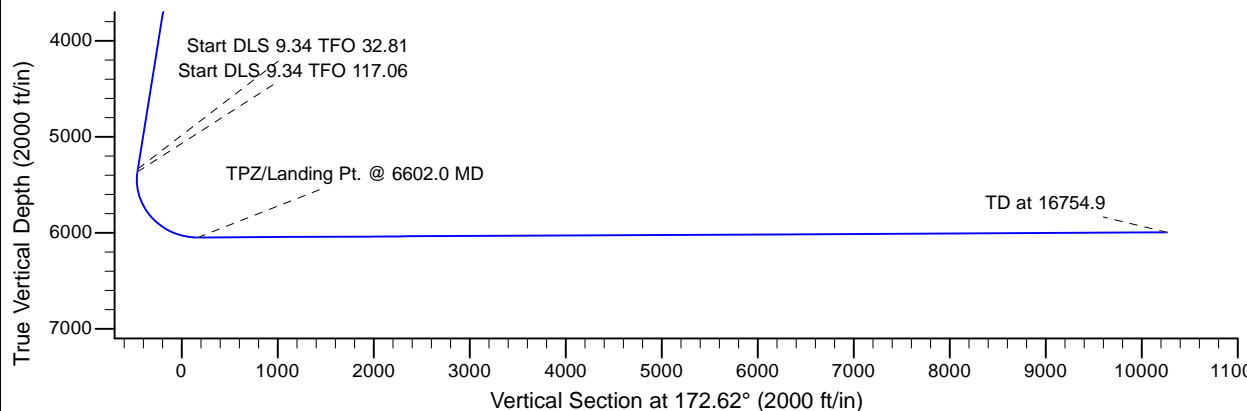
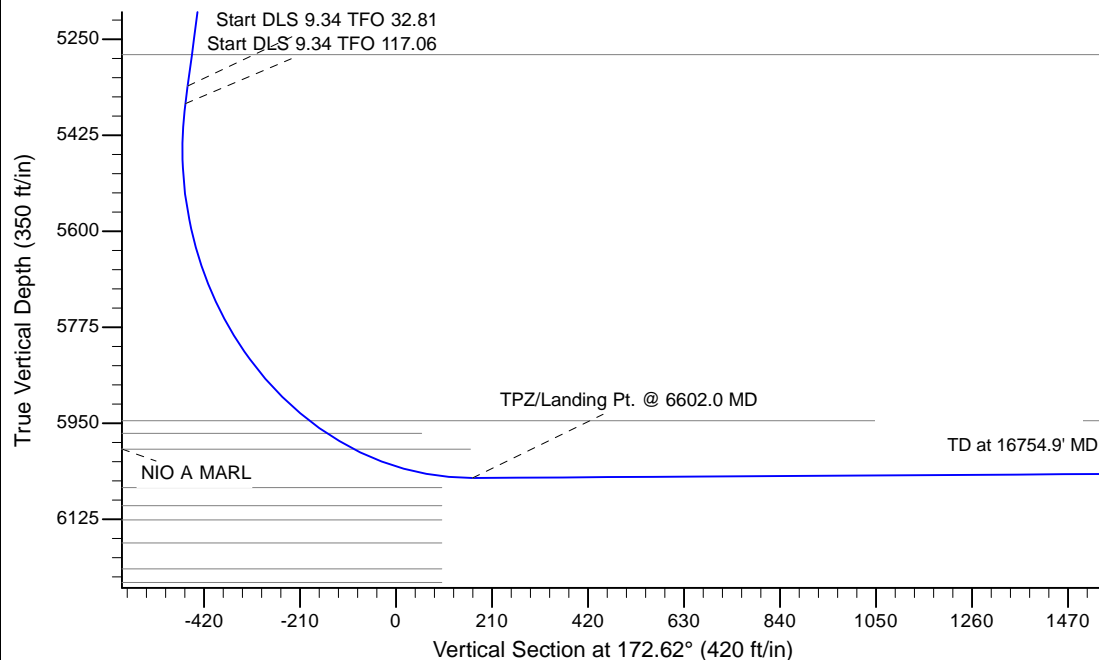
Project: Wattenberg Field
 Site: LC (Sec.12-T09N-R59W) Weld County, CO
 Well: Earp Federal LC23-735
 Wellbore: Original Drilling
 Design: APD - Rev 2

Northern Region Drilling - Working

Geodetic System: US State Plane 1983
 Datum: North American Datum 1983
 Ellipsoid: GRS 1980
 Zone: Colorado Northern Zone
 System Datum: Mean Sea Level

SECTION DETAILS

Sec	MD	Inc	Azi	TVD	+N/-S	+E/-W	Dleg	TFace	VSec	Target
1	0.0	0.00	0.00	0.0	0.0	0.0	0.00	0.00	0.0	
2	2000.0	0.00	0.00	2000.0	0.0	0.0	0.00	0.00	0.0	
3	2950.0	19.00	55.00	2932.7	89.5	127.9	2.00	55.00	-72.4	
4	5490.7	19.00	55.00	5335.0	564.0	805.4	0.00	0.00	-455.9	
5	5525.0	21.76	59.68	5367.1	570.4	815.5	9.34	32.81	-461.0	
6	6602.0	90.30	178.60	6049.5	-30.0	1070.0	9.34	117.06	167.1	
7	16754.9	90.30	178.60	5996.2	-10179.7	1317.9	0.00	48.44	10264.7	Earp Federal LC23-735 BHL 810'FSL, 1210'FEL



WELL DETAILS: Earp Federal LC23-735

Ground Level: 4944.0			
Northing	Easting	Latitude	Longitude
0.0	0.0	1523210.40	3431007.60
		40.759220	-103.944130

Plan: APD - Rev 2 (Earp Federal LC23-735/Original Drilling)

Created By: Shailey Jewell Date: 10:38, July 27 2016

OK to submit with 2A as per Noble Drilling
 7/27/2016 10:46