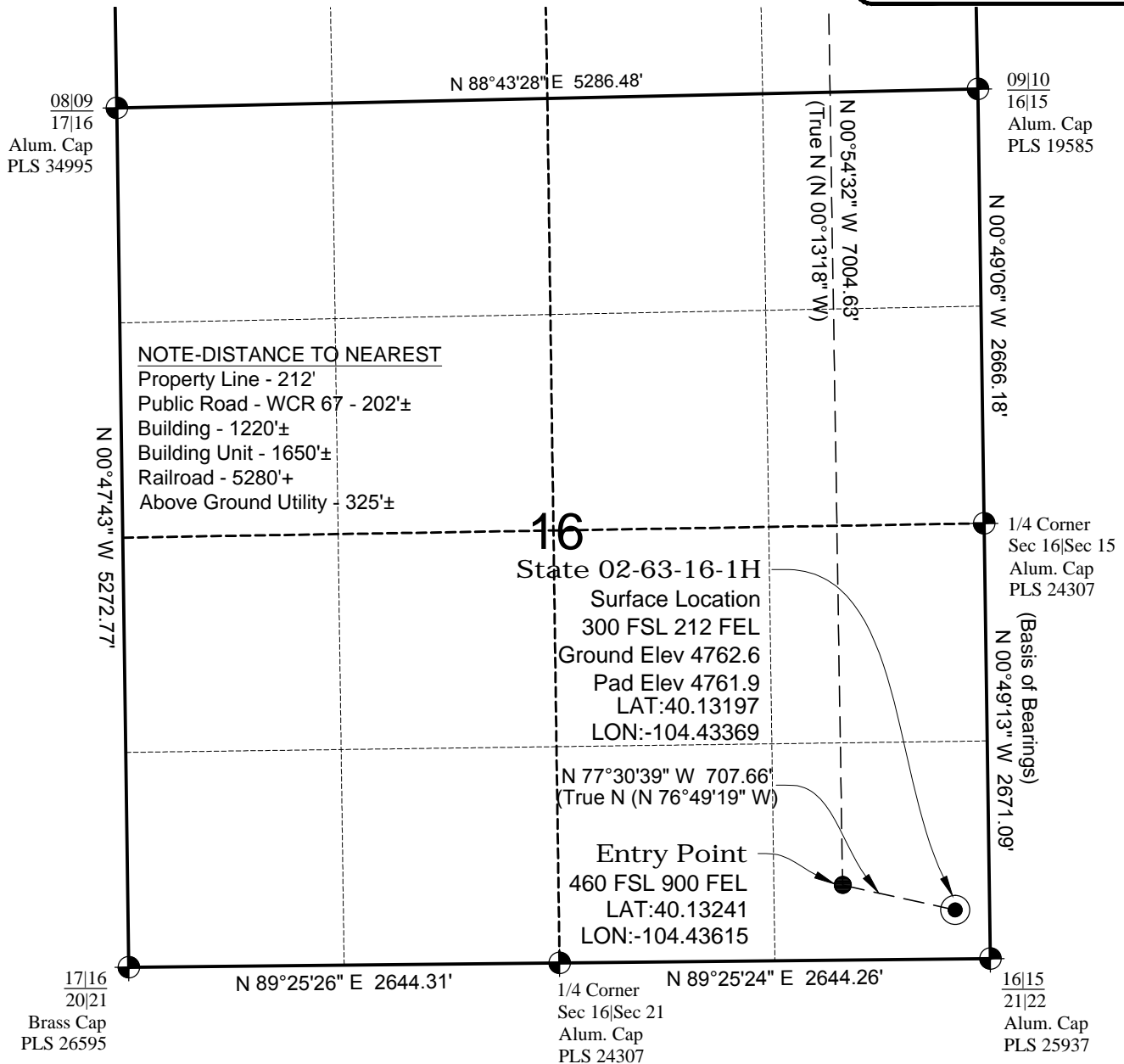


WELL LOCATION MAP

State 02-63-16-1H Pad



SURVEYOR'S STATEMENT

The undersigned hereby states that the well location shown hereon was staked on the ground based on existing monumentation and/or physical evidence found in the field and is correct to the best of my knowledge, information and belief.



North

NOTES

- 1.) Horizontal (NAD 83) and vertical (NAVD 88) datum are based on the Trimble "VRS Now" network.
 - 2.) All directions, distances, and dimensions shown hereon are based on coordinates from the Colorado coordinate system of 1983 north zone (C.R.S. 38-52-102), U.S. Survey feet.
 - 3.) All section line dimensions shown hereon are based on field measurements of existing monuments and/or physical evidence found in the field unless otherwise indicated.
 - 4.) Physical features shown hereon are for graphical representation only.
 - 5.) Distances to nearest section lines are measured perpendicularly.
 - 6.) This is not a land survey nor land survey plat.
 - 7.) Date of Survey 3/9/16; Date of Drawing 3/30/16. REV 2
- PDOP Reading: 1.920 Instrument Operator: Bob Hendricks

3/30/16

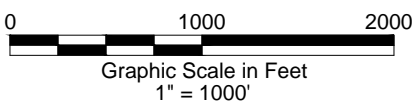
VERDAD OIL & GAS STATE 02-63-16-1H

SL SE1/4 SE1/4 Section 16 T2N R63W
 HL TD NE1/4 SE1/4 Section 9 T2N R63W
 6th PM Weld County Colorado



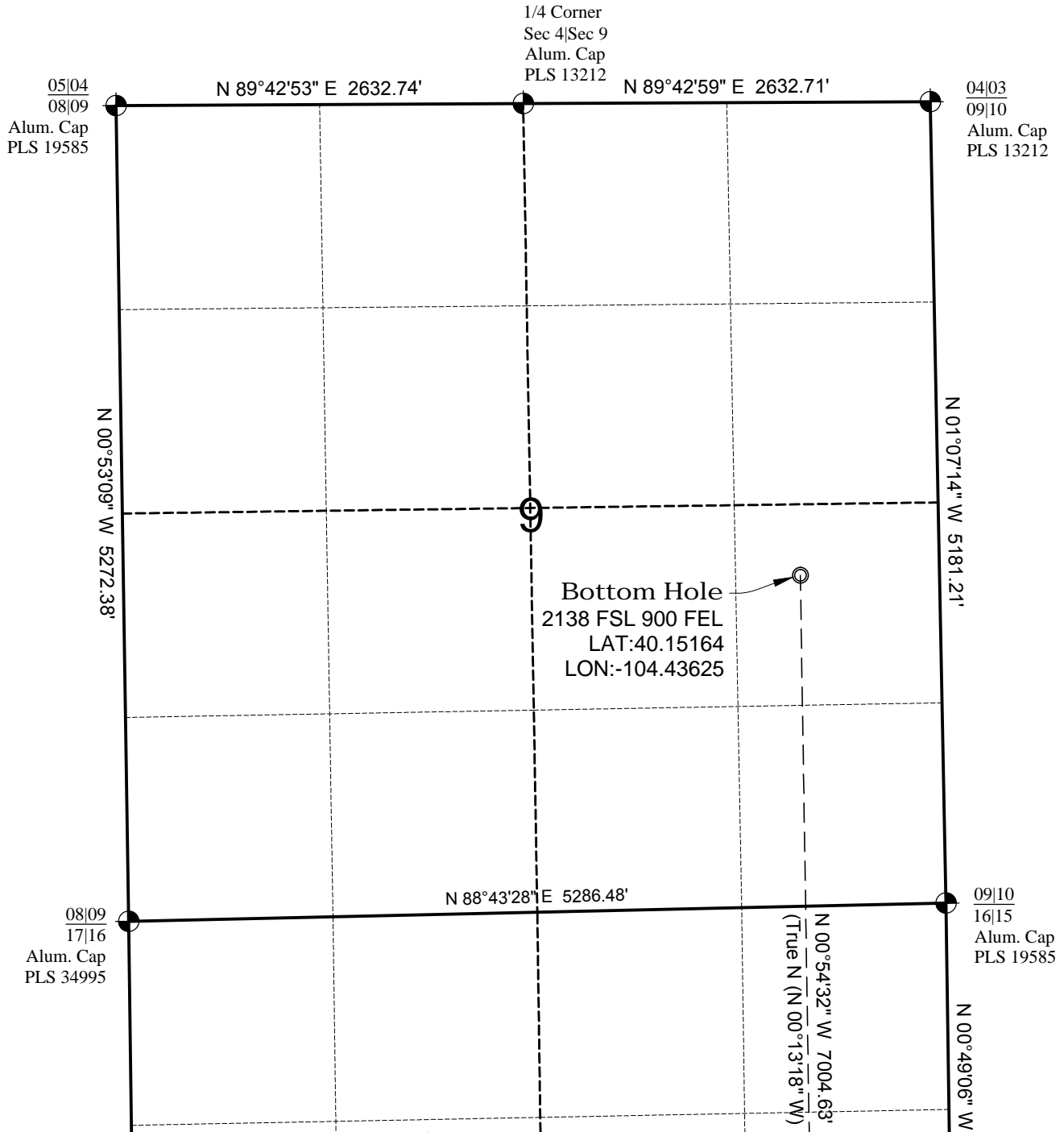
TOPOGRAPHIC
 LOYALTY INNOVATION LEGACY

520 Stacy Court, Lafayette, CO 303 666 0379
 www.topographic.com

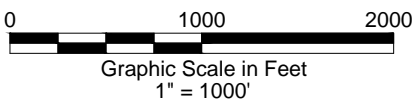


BOTTOM HOLE MAP

State 02-63-16-1H Pad



North



3/30/16

VERDAD OIL & GAS
STATE 02-63-16-1H

SL SE1/4 SE1/4 Section 16 T2N R63W
HL TD NE1/4 SE1/4 Section 9 T2N R63W
6th PM Weld County Colorado

DWG: G:\GEOSURV\Weld\North\VERDAD\STATE 16-2-63\State 16-2-63 Plot R2.dwg USER: mcostonzo DATE: Mar 30, 2016 3:15pm



TOPOGRAPHIC
LOYALTY INNOVATION LEGACY

520 Stacy Court, Lafayette, CO 303 666 0379
www.topographic.com