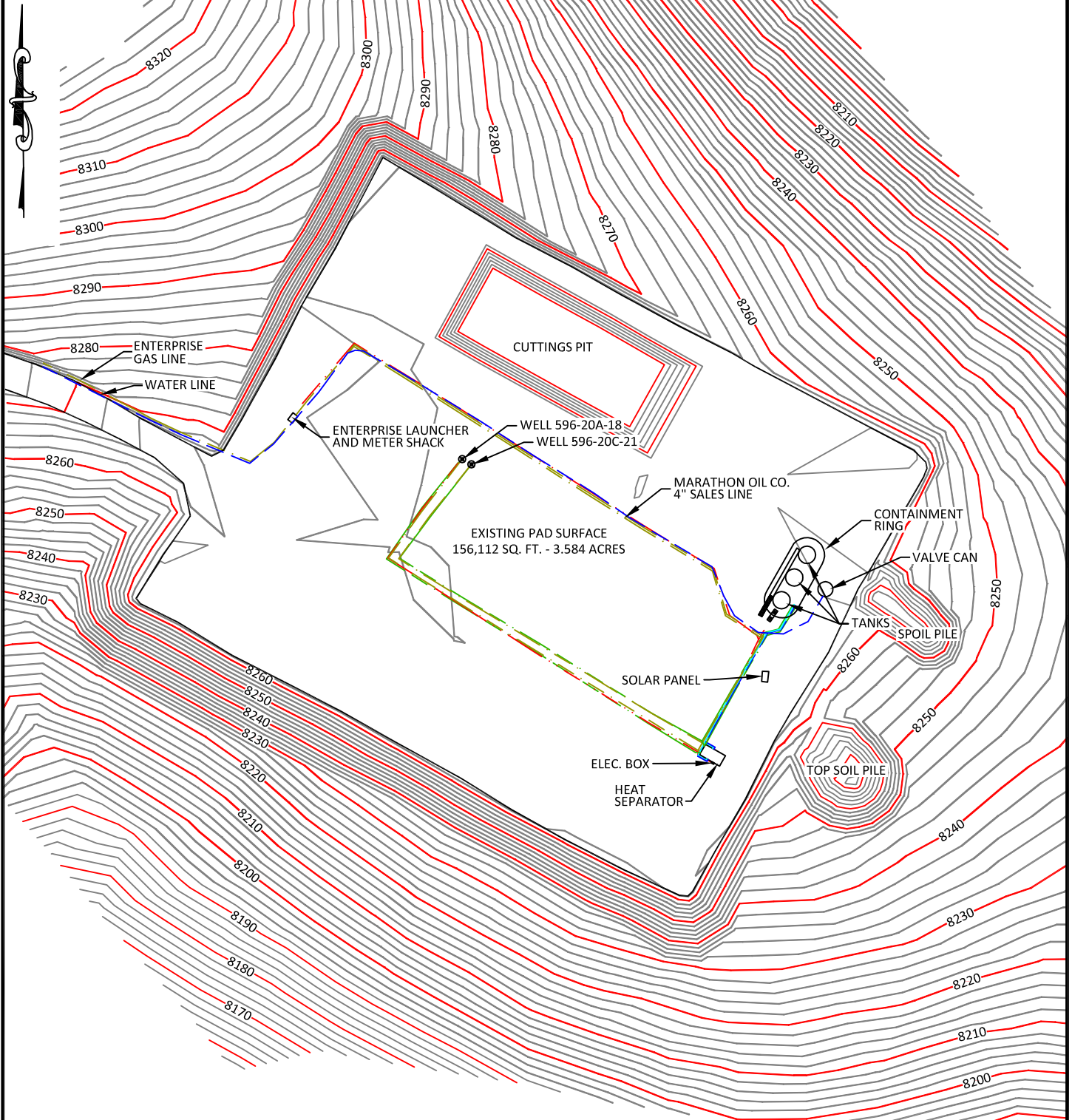


PAD 596-20C

SCALE: 1"= 100'
CONTOUR
INTERVAL 2'



CONFIDENTIALITY NOTES:

The information contained in this plat is legally privileged and confidential information intended only for the use of the recipients. If you are not the intended recipients, you are hereby notified that any use, dissemination, distribution or copying of this information is strictly prohibited.



**WILLIAM H. SMITH
& ASSOCIATES P.C.**

SURVEYING CONSULTANTS

550 EAST SECOND NORTH PHONE: 307-875-3638
GREEN RIVER, WY 307-875-3639
www.whsmithpc.com

DRAWN BY: JSJ

CHECKED BY: WHD

PROJECT NO: N/A

JOB NO: 26099

REVISIONS:

LEGEND

- GAS LINES
- WATER LINES
- CONDENSATE LINES
- GLYCOL LINES
- ELECTRIC LINES

LOCATION:

596-20C
WITHIN THE SW/4
SECTION 20,
T 5 S, R 96 W,
6TH PM.
GARFIELD COUNTY,
COLORADO

MARATHON OIL COMPANY

PO BOX 3128, HOUSTON TX, 77253
5555 SAN FELIPE, HOUSTON TX, 77056

AS-BUILT PAD

SCALE: 1"=100'

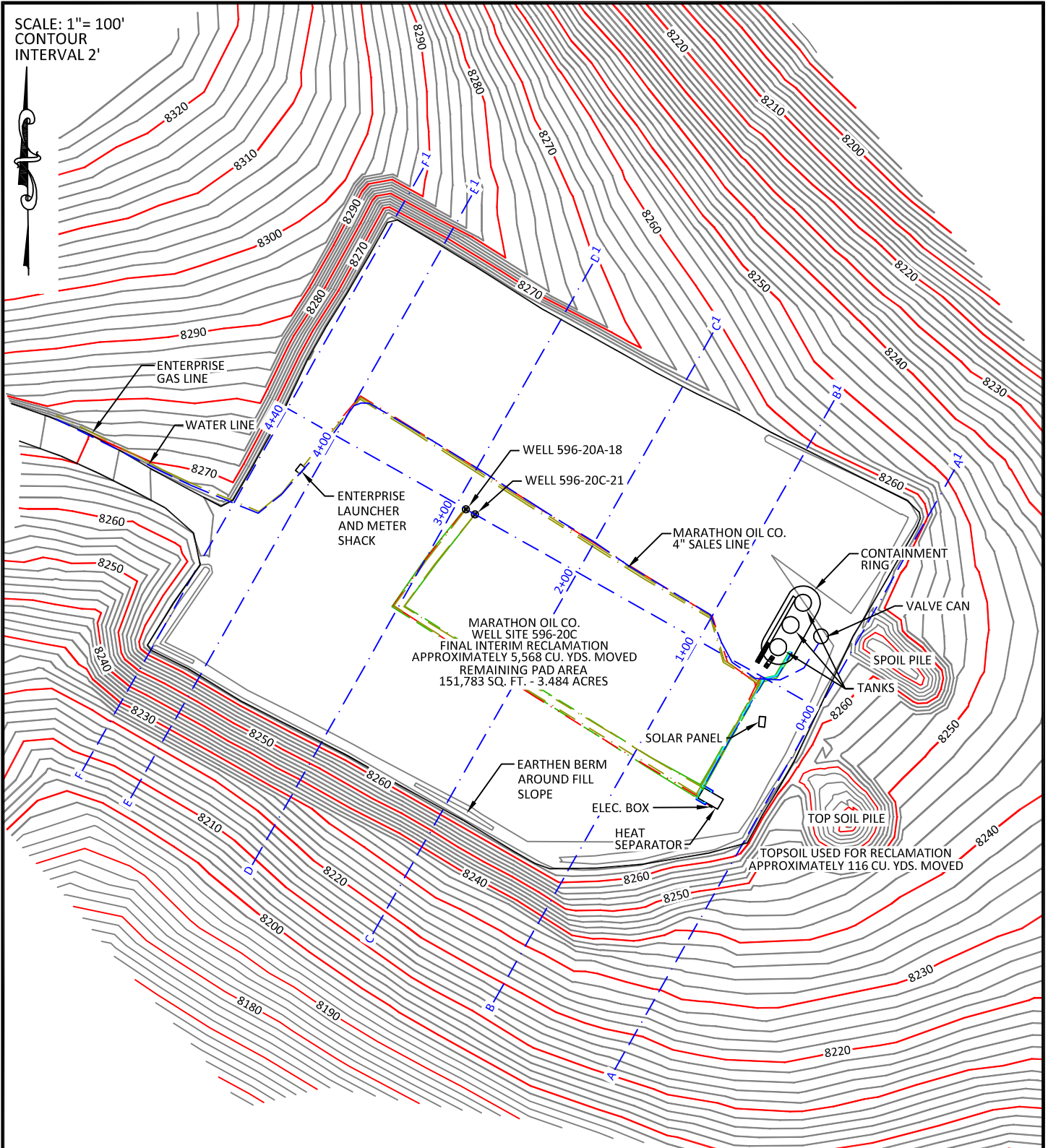
DATE: 09/02/2011

EXHIBIT "A"

SHEET 1 OF 3

PAD 596-20C

SCALE: 1"= 100'
CONTOUR
INTERVAL 2'



CONFIDENTIALITY NOTES:

The information contained in this plat is legally privileged and confidential information intended only for the use of the recipients. If you are not the intended recipients, you are hereby notified that any use, dissemination, distribution or copying of this information is strictly prohibited.



**WILLIAM H. SMITH
& ASSOCIATES P.C.**

SURVEYING CONSULTANTS

550 EAST SECOND NORTH PHONE: 307-875-3638
GREEN RIVER, WY 307-875-3639
www.whsmithpc.com

DRAWN BY: JSJ

CHECKED BY: WHD

PROJECT NO: N/A

JOB NO: 26099

REVISIONS:

DATA

FINAL INTERIM RECLAMATION
APPROXIMATELY 5,568 CU. YDS. MOVED

TOPSOIL USED FOR RECLAMATION
APPROXIMATELY 116 CU. YDS. MOVED

REMAINING PAD AREA
151,783 SQ. FT. - 3.484 ACRES

LOCATION:

596-20C
WITHIN THE SW/4
SECTION 20,
T 5 S, R 96 W,
6TH PM.
GARFIELD COUNTY,
COLORADO

MARATHON OIL COMPANY
PO BOX 3128, HOUSTON TX, 77253
5555 SAN FELIPE, HOUSTON TX, 77056

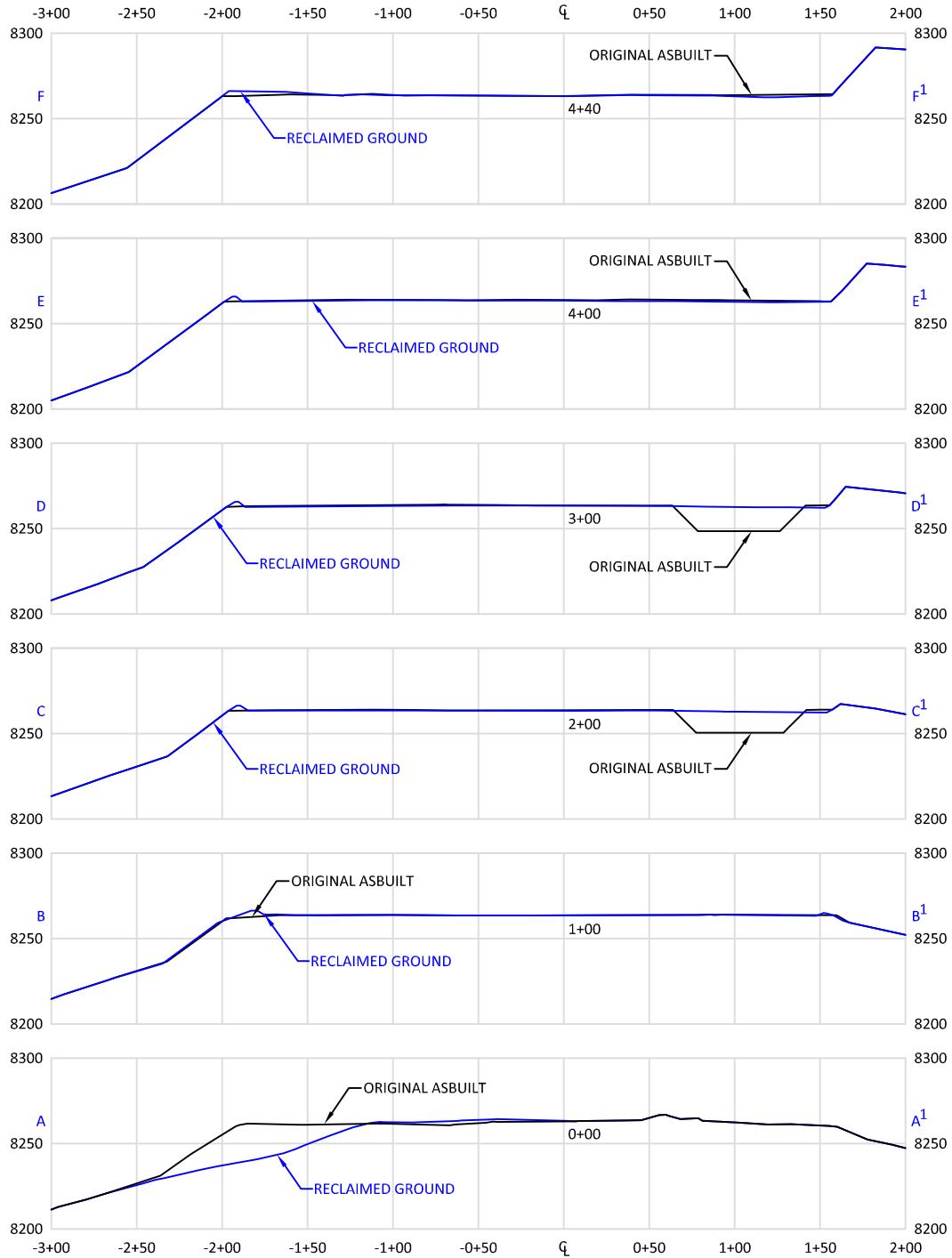
INTERIM RECLAMATION ASBUILT

SCALE: 1"=100'

DATE: 09/02/2011

EXHIBIT "B"

SHEET 2 OF 3



CONFIDENTIALITY NOTES:

THE INFORMATION CONTAINED IN THIS PLOT IS LEGALLY PRIVILEGED AND CONFIDENTIAL INFORMATION INTENDED ONLY FOR THE USE OF THE RECIPIENTS. IF YOU ARE NOT THE INTENDED RECIPIENTS, YOU ARE HEREBY NOTIFIED THAT ANY USE, DISSEMINATION, DISTRIBUTION OR COPYING OF THIS INFORMATION IS STRICTLY PROHIBITED.



**WILLIAM H. SMITH
& ASSOCIATES P.C.**

SURVEYING CONSULTANTS
550 EAST SECOND NORTH PHONE: 307-875-3638
GREEN RIVER, WY 307-875-3639
www.whsmithpc.com

DRAWN BY: JSJ

CHECKED BY: WHD

JOB NO: 2010011

PROJECT NO: N/A

REVISIONS:

LEGEND

— ORIGINAL ASBUILT
— RECLAIMED GROUND

LOCATION:

596-20C
WITHIN THE SW/4
SECTION 20,
T 5 S, R 96 W,
6TH PM.
GARFIELD COUNTY,
COLORADO

MARATHON OIL COMPANY

P.O. BOX 3128
HOUSTON, TX 77253
5555 SAN FELIPE
HOUSTON, TX 77056

**INTERIM RECLAMATION ASBUILT
CROSS SECTIONS**

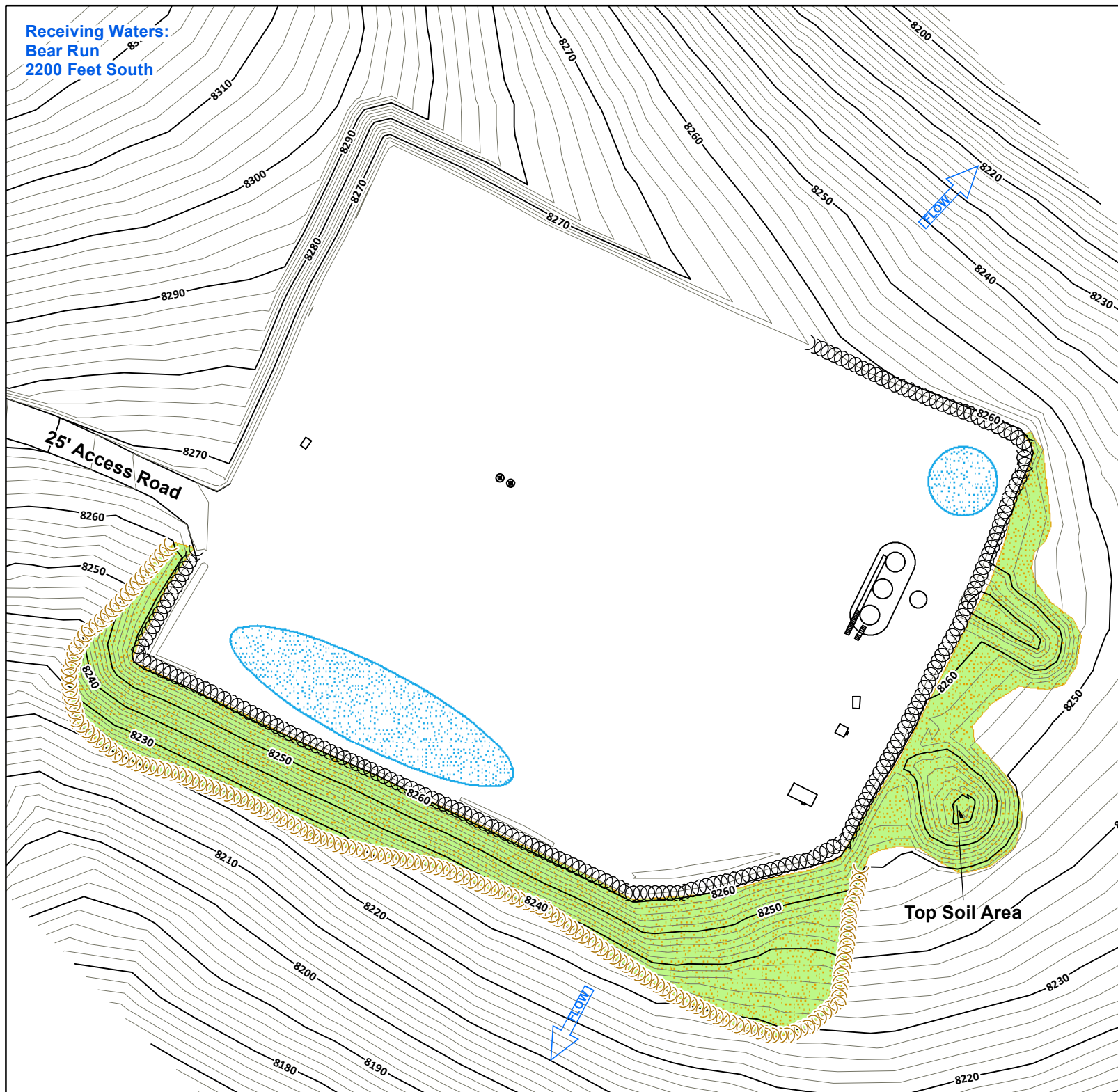
SCALE: 1"=100'H/100'V

DATE: 09/02/2011

EXHIBIT "C"

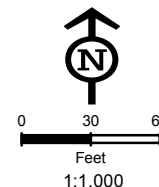
SHEET 3 OF 3

Receiving Waters:
Bear Run
2200 Feet South



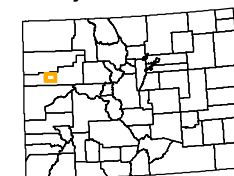
Legend

- Culvert
- Sediment Trap
- Cattle Pond
- Water Bar
- Rip Rap
- Bales
- V-Ditch W/Check Dam
- Diversion Ditch
- Site Berm
- Toe Berm
- Fiber Roll
- Silt Fence
- Area To Be Reclaimed
- Fence
- Blanket
- Cut
- Fill
- Seeded & Hydromulched
- Soil Roughening
- Snow Storage
- Rip Rap (Large Area)



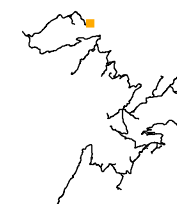
Not Present
Asphalt Or Concrete Batch Plants

Project Location



Garfield County

Map Index Overview



**Pad Site
596-20C**

Total Disturbed Area = 3.48 Acres

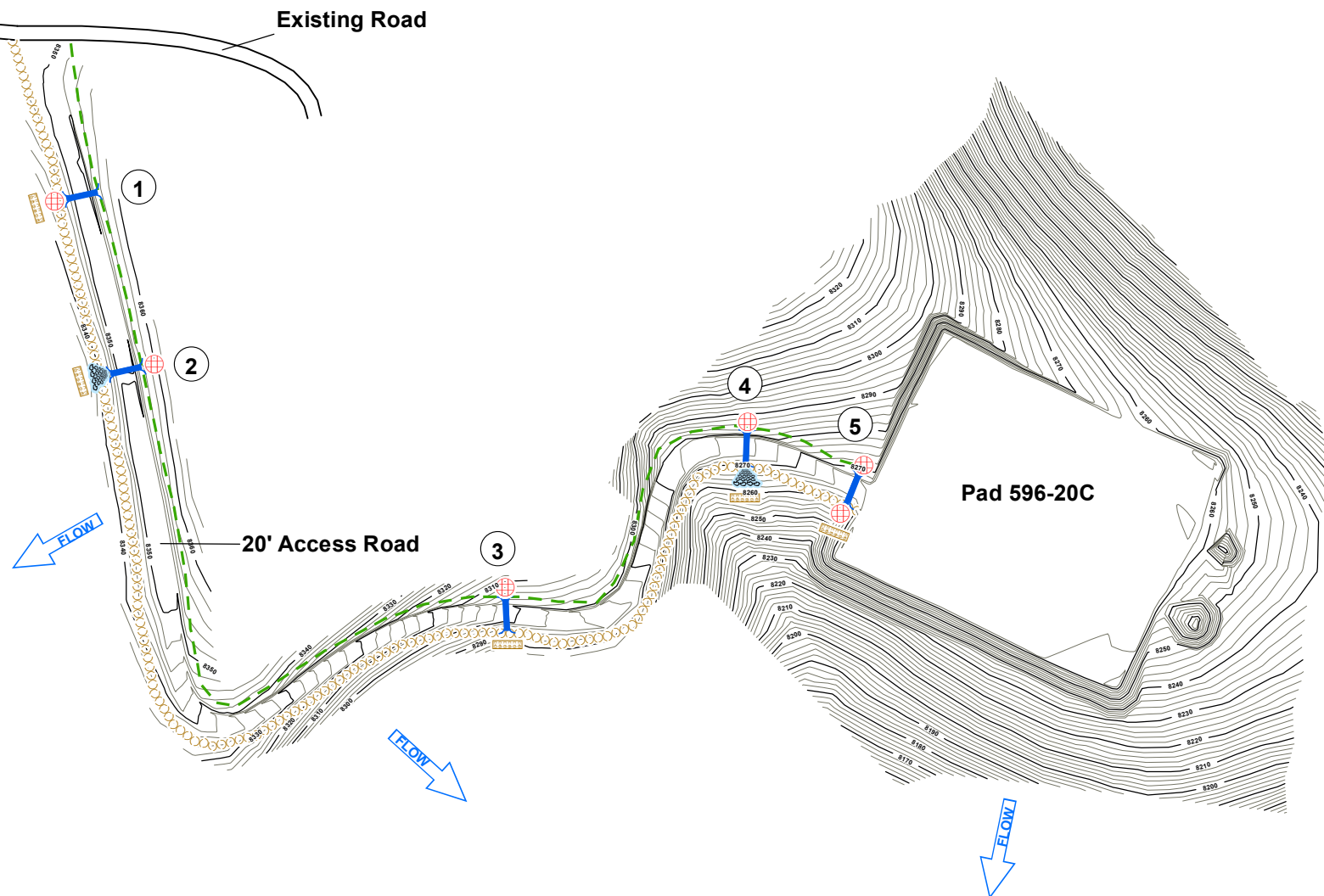
MARATHON OIL

REVISED	BY:	COMMENT:
3/28/2012	BJB	TEMPLATE CREATION
3/28/2012	BJB	MAP CREATION
11/12/2013	BJB	BMP REVISION



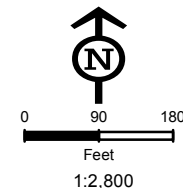
InterTech E&E, LLC
bbergstrom@cbmainc.com
M:\Projects\Marathon\Piceance\Projects\SWMP\2013\596_20C\SWMP_596_20C_20131112.mxd

Receiving Waters:
Bear Run
2000 Feet South



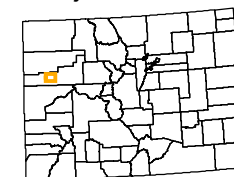
Legend

- Culvert
- Sediment Trap
- Cattle Pond
- Water Bar
- Rip Rap
- Bales
- V-Ditch W/Check Dam
- Diversion Ditch
- Site Berm
- Toe Berm
- Fiber Roll
- Silt Fence
- Area To Be Reclaimed
- Blanket
- Cut
- Fill
- Seeded & Hydromulched
- Soil Roughening
- Snow Storage



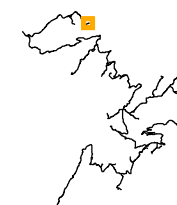
Not Present
Asphalt Or Concrete Batch Plants

Project Location



Garfield County

Map Index Overview



Access Road To Pad 596-20C

Approximate Road Length = 2,180 LF

MARATHON OIL

REVISED	BY:	COMMENT:
3/28/2012	BJB	TEMPLATE CREATION
3/28/2012	BJB	MAP CREATION



InterTech E&E, LLC
bbergstrom@ctmainc.com
M:\Projects\Marathon\Piceance\Projects\SWMP\2012\596_20C\SWMP_596_20C_Road_20120328.mxd