



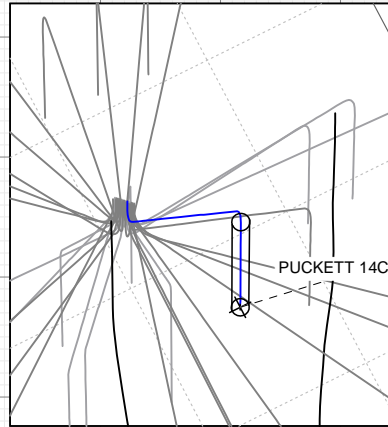
SECTION DETAILS

Sec	MD	Inc	Azi	TVD	+N/-S	+E/-W	Dleg	TFace	Vsect	Target
1	0.0	0.00	0.00	0.0	0.0	0.0	0.00	0.00	0.0	
2	200.0	0.00	0.00	200.0	0.0	0.0	0.00	0.00	0.0	
3	715.5	15.46	137.24	709.2	-50.8	46.9	3.00	137.24	69.1	
4	6764.0	15.46	137.24	6538.8	-1234.8	1141.9	0.00	0.00	1681.9	
5	7279.5	0.00	0.00	7048.0	-1285.6	1188.9	3.00	180.00	1751.1	
6	9261.5	0.00	0.00	9030.0	-1285.6	1188.9	0.00	0.00	1751.1	PUCKETT 14C-30 PBHL

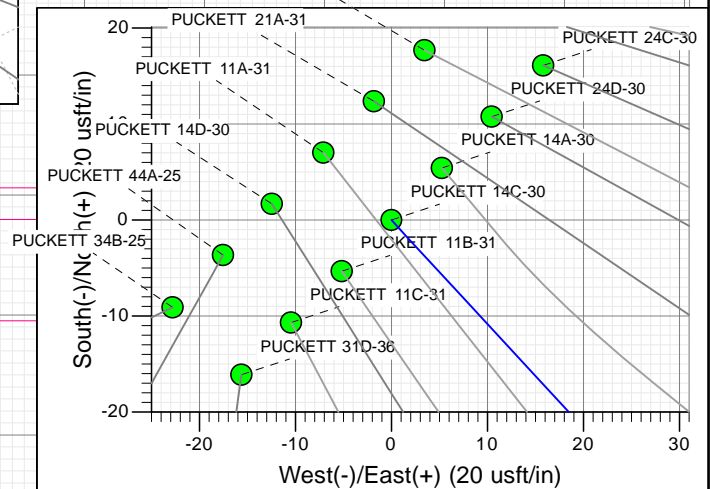
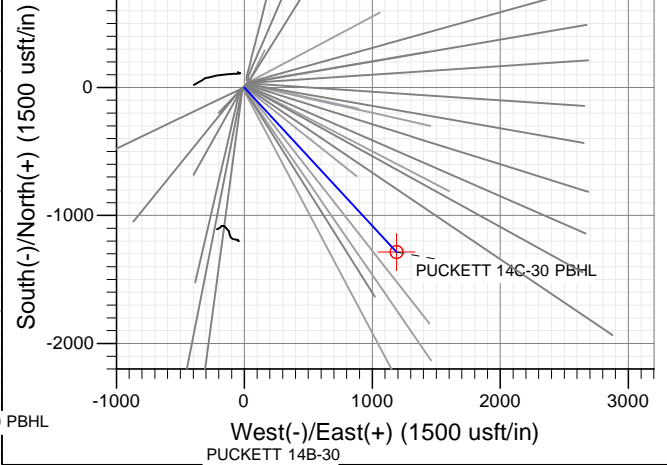
Project: Garfield County, CO (UTM 12
Site: S30-T6S-R96W (MESA I25)
Well: PUCKETT 14C-30
Wellbore: OH
Design: PLAN #1

FORMATION TOP DETAILS

TVDPath	MDPath	Formation
5941.0	6143.8	OHIO_CREEK.MBL (TVD)
6205.0	6417.7	WILLIAMS_FORK.MBL (TVD)
7048.0	7279.5	TOP_GAS.MBL (TVD)
8630.0	8861.5	CAMEO.MBL (TVD)
8880.0	9111.5	ROLLINS.MBL (TVD)
9030.0	9261.5	TD.MBL (TVD)



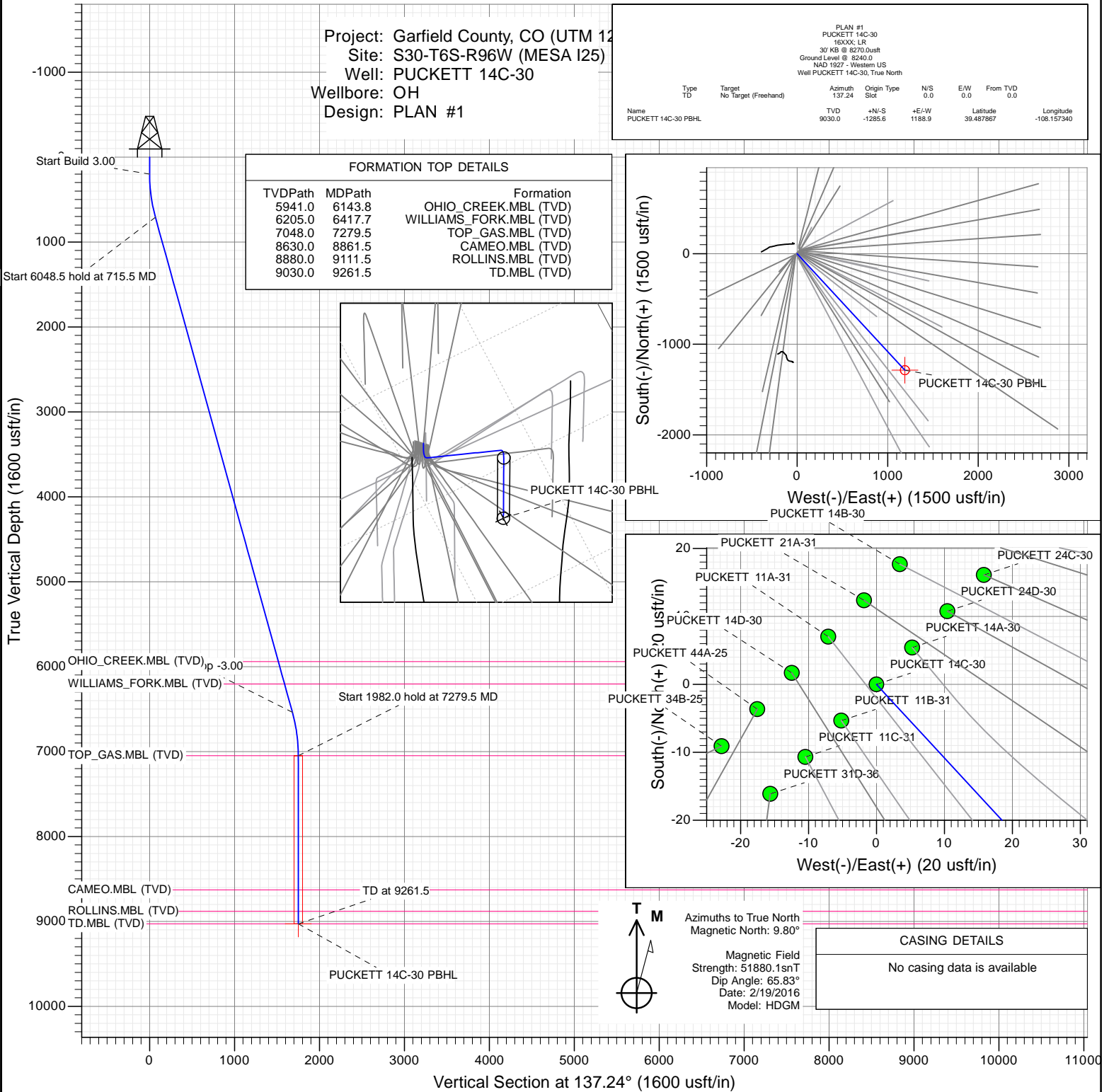
Type	Target	Target No	Target (Freehand)	Azimuth	Origin Type	N/S	E/W	From TVD
TD	No			137.24	Slot	0.0	0.0	0.0
Name				TVD	+N/-S	+E/-W	Latitude	Longitude
PUCKETT 14C-30 PBHL				9030.0	-1285.6	1188.9	39.487867	-108.157340



Azimuths to True North
Magnetic North: 9.80°
Magnetic Field
Strength: 51880.1snT
Dip Angle: 65.83°
Date: 2/19/2016
Model: HDGM

CASING DETAILS

No casing data is available



WELL DETAILS: PUCKETT 14C-30

+N/-S	+E/-W	Northing	Ground Level:	8240.0	Latitude	Longitude
0.0	0.0	14353473.90	Easting	2441277.30	39.491395	-108.161550

CATHEDRAL



Cathedral Energy Services

Planning Report

Database:	USA EDM 5000 Multi Users DB	Local Co-ordinate Reference:	Well PUCKETT 14C-30
Company:	Caerus Oil & Gas	TVD Reference:	30' KB @ 8270.0usft
Project:	Garfield County, CO (UTM 12N)	MD Reference:	30' KB @ 8270.0usft
Site:	S30-T6S-R96W (MESA I25)	North Reference:	True
Well:	PUCKETT 14C-30	Survey Calculation Method:	Minimum Curvature
Wellbore:	OH		
Design:	PLAN #1		

Project	Garfield County, CO (UTM 12N)		
Map System:	Universal Transverse Mercator (US Survey Feet)	System Datum:	Mean Sea Level
Geo Datum:	NAD 1927 - Western US		
Map Zone:	Zone 12N (114 W to 108 W)		

Site		S30-T6S-R96W (MESA I25)			
Site Position:		Northing:	14,353,462.90 usft	Latitude:	39.491366
From:	Map	Easting:	2,441,267.20 usft	Longitude:	-108.161587
Position Uncertainty:	0.0 usft	Slot Radius:	13-3/16"	Grid Convergence:	1.81 °

Well	PUCKETT 14C-30					
Well Position	+N/-S	0.0 usft	Northing:	14,353,473.90 usft	Latitude:	39.491395
	+E/-W	0.0 usft	Easting:	2,441,277.30 usft	Longitude:	-108.161550
Position Uncertainty		0.0 usft	Wellhead Elevation:	0.0 usft	Ground Level:	8,240.0 usft

Wellbore	OH				
Magnetics	Model Name	Sample Date	Declination	Dip Angle	Field Strength
			(°)	(°)	(nT)
	HDGM	2/19/2016	9.80	65.83	51,880

Design	PLAN #1			
Audit Notes:				
Version:	Phase:	PLAN	Tie On Depth:	0.0
Vertical Section:	Depth From (TVD)	+N/-S	+E/-W	Direction
	(usft)	(usft)	(usft)	(°)
	0.0	0.0	0.0	137.24

Plan Sections										
Measured Depth (usft)	Inclination (°)	Azimuth (°)	Vertical Depth (usft)	+N/-S (usft)	+E/-W (usft)	Dogleg Rate (°/100usft)	Build Rate (°/100usft)	Turn Rate (°/100usft)	TFO (°)	Target
0.0	0.00	0.00	0.0	0.0	0.0	0.00	0.00	0.00	0.00	
200.0	0.00	0.00	200.0	0.0	0.0	0.00	0.00	0.00	0.00	
715.5	15.46	137.24	709.2	-50.8	46.9	3.00	3.00	0.00	137.24	
6,764.0	15.46	137.24	6,538.8	-1,234.8	1,141.9	0.00	0.00	0.00	0.00	
7,279.5	0.00	0.00	7,048.0	-1,285.6	1,188.9	3.00	-3.00	0.00	180.00	
9,261.5	0.00	0.00	9,030.0	-1,285.6	1,188.9	0.00	0.00	0.00	0.00	PUCKETT 14C-30 PE

Cathedral Energy Services

Planning Report

Database:	USA EDM 5000 Multi Users DB	Local Co-ordinate Reference:	Well PUCKETT 14C-30
Company:	Caerus Oil & Gas	TVD Reference:	30' KB @ 8270.0usft
Project:	Garfield County, CO (UTM 12N)	MD Reference:	30' KB @ 8270.0usft
Site:	S30-T6S-R96W (MESA I25)	North Reference:	True
Well:	PUCKETT 14C-30	Survey Calculation Method:	Minimum Curvature
Wellbore:	OH		
Design:	PLAN #1		

Planned Survey

Measured Depth (usft)	Inclination (°)	Azimuth (°)	Vertical Depth (usft)	+N/-S (usft)	+E/-W (usft)	Vertical Section (usft)	Dogleg Rate (°/100usft)	Build Rate (°/100u)	Comments / Formations
0.0	0.00	0.00	0.0	0.0	0.0	0.0	0.00	0.00	
100.0	0.00	0.00	100.0	0.0	0.0	0.0	0.00	0.00	
200.0	0.00	0.00	200.0	0.0	0.0	0.0	0.00	0.00	Start Build 3.00
300.0	3.00	137.24	300.0	-1.9	1.8	2.6	3.00	3.00	
400.0	6.00	137.24	399.6	-7.7	7.1	10.5	3.00	3.00	
500.0	9.00	137.24	498.8	-17.3	16.0	23.5	3.00	3.00	
600.0	12.00	137.24	597.1	-30.6	28.3	41.7	3.00	3.00	
700.0	15.00	137.24	694.3	-47.8	44.2	65.1	3.00	3.00	
715.5	15.46	137.24	709.2	-50.8	46.9	69.1	3.00	3.00	Start 6048.5 hold at 715.5 MD
800.0	15.46	137.24	790.7	-67.3	62.2	91.7	0.00	0.00	
900.0	15.46	137.24	887.1	-86.9	80.3	118.3	0.00	0.00	
1,000.0	15.46	137.24	983.5	-106.5	98.5	145.0	0.00	0.00	
1,100.0	15.46	137.24	1,079.8	-126.0	116.6	171.7	0.00	0.00	
1,200.0	15.46	137.24	1,176.2	-145.6	134.7	198.3	0.00	0.00	
1,300.0	15.46	137.24	1,272.6	-165.2	152.8	225.0	0.00	0.00	
1,400.0	15.46	137.24	1,369.0	-184.8	170.9	251.7	0.00	0.00	
1,500.0	15.46	137.24	1,465.4	-204.3	189.0	278.3	0.00	0.00	
1,600.0	15.46	137.24	1,561.7	-223.9	207.1	305.0	0.00	0.00	
1,700.0	15.46	137.24	1,658.1	-243.5	225.2	331.7	0.00	0.00	
1,800.0	15.46	137.24	1,754.5	-263.1	243.3	358.3	0.00	0.00	
1,900.0	15.46	137.24	1,850.9	-282.7	261.4	385.0	0.00	0.00	
2,000.0	15.46	137.24	1,947.3	-302.2	279.5	411.6	0.00	0.00	
2,100.0	15.46	137.24	2,043.6	-321.8	297.6	438.3	0.00	0.00	
2,200.0	15.46	137.24	2,140.0	-341.4	315.7	465.0	0.00	0.00	
2,300.0	15.46	137.24	2,236.4	-361.0	333.8	491.6	0.00	0.00	
2,400.0	15.46	137.24	2,332.8	-380.5	351.9	518.3	0.00	0.00	
2,500.0	15.46	137.24	2,429.2	-400.1	370.0	545.0	0.00	0.00	
2,600.0	15.46	137.24	2,525.5	-419.7	388.1	571.6	0.00	0.00	
2,700.0	15.46	137.24	2,621.9	-439.3	406.2	598.3	0.00	0.00	
2,800.0	15.46	137.24	2,718.3	-458.8	424.3	625.0	0.00	0.00	
2,900.0	15.46	137.24	2,814.7	-478.4	442.4	651.6	0.00	0.00	
3,000.0	15.46	137.24	2,911.1	-498.0	460.5	678.3	0.00	0.00	
3,100.0	15.46	137.24	3,007.4	-517.6	478.6	705.0	0.00	0.00	
3,200.0	15.46	137.24	3,103.8	-537.1	496.7	731.6	0.00	0.00	
3,300.0	15.46	137.24	3,200.2	-556.7	514.8	758.3	0.00	0.00	
3,400.0	15.46	137.24	3,296.6	-576.3	532.9	784.9	0.00	0.00	
3,500.0	15.46	137.24	3,393.0	-595.9	551.0	811.6	0.00	0.00	
3,600.0	15.46	137.24	3,489.3	-615.5	569.1	838.3	0.00	0.00	
3,700.0	15.46	137.24	3,585.7	-635.0	587.2	864.9	0.00	0.00	
3,800.0	15.46	137.24	3,682.1	-654.6	605.3	891.6	0.00	0.00	
3,900.0	15.46	137.24	3,778.5	-674.2	623.5	918.3	0.00	0.00	
4,000.0	15.46	137.24	3,874.9	-693.8	641.6	944.9	0.00	0.00	
4,100.0	15.46	137.24	3,971.2	-713.3	659.7	971.6	0.00	0.00	
4,200.0	15.46	137.24	4,067.6	-732.9	677.8	998.3	0.00	0.00	
4,300.0	15.46	137.24	4,164.0	-752.5	695.9	1,024.9	0.00	0.00	
4,400.0	15.46	137.24	4,260.4	-772.1	714.0	1,051.6	0.00	0.00	
4,500.0	15.46	137.24	4,356.7	-791.6	732.1	1,078.2	0.00	0.00	
4,600.0	15.46	137.24	4,453.1	-811.2	750.2	1,104.9	0.00	0.00	
4,700.0	15.46	137.24	4,549.5	-830.8	768.3	1,131.6	0.00	0.00	
4,800.0	15.46	137.24	4,645.9	-850.4	786.4	1,158.2	0.00	0.00	
4,900.0	15.46	137.24	4,742.3	-869.9	804.5	1,184.9	0.00	0.00	
5,000.0	15.46	137.24	4,838.6	-889.5	822.6	1,211.6	0.00	0.00	

Cathedral Energy Services

Planning Report

Database:	USA EDM 5000 Multi Users DB	Local Co-ordinate Reference:	Well PUCKETT 14C-30
Company:	Caerus Oil & Gas	TVD Reference:	30' KB @ 8270.0usft
Project:	Garfield County, CO (UTM 12N)	MD Reference:	30' KB @ 8270.0usft
Site:	S30-T6S-R96W (MESA I25)	North Reference:	True
Well:	PUCKETT 14C-30	Survey Calculation Method:	Minimum Curvature
Wellbore:	OH		
Design:	PLAN #1		

Planned Survey									
Measured Depth (usft)	Inclination (°)	Azimuth (°)	Vertical Depth (usft)	+N/-S (usft)	+E/-W (usft)	Vertical Section (usft)	Dogleg Rate (°/100usft)	Build Rate (°/100u)	Comments / Formations
5,100.0	15.46	137.24	4,935.0	-909.1	840.7	1,238.2	0.00	0.00	
5,200.0	15.46	137.24	5,031.4	-928.7	858.8	1,264.9	0.00	0.00	
5,300.0	15.46	137.24	5,127.8	-948.3	876.9	1,291.6	0.00	0.00	
5,400.0	15.46	137.24	5,224.2	-967.8	895.0	1,318.2	0.00	0.00	
5,500.0	15.46	137.24	5,320.5	-987.4	913.1	1,344.9	0.00	0.00	
5,600.0	15.46	137.24	5,416.9	-1,007.0	931.2	1,371.6	0.00	0.00	
5,700.0	15.46	137.24	5,513.3	-1,026.6	949.3	1,398.2	0.00	0.00	
5,800.0	15.46	137.24	5,609.7	-1,046.1	967.4	1,424.9	0.00	0.00	
5,900.0	15.46	137.24	5,706.1	-1,065.7	985.5	1,451.5	0.00	0.00	
6,000.0	15.46	137.24	5,802.4	-1,085.3	1,003.6	1,478.2	0.00	0.00	
6,100.0	15.46	137.24	5,898.8	-1,104.9	1,021.7	1,504.9	0.00	0.00	
6,143.8	15.46	137.24	5,941.0	-1,113.4	1,029.6	1,516.5	0.00	0.00	OHIO_CREEK.MBL (TVD)
6,200.0	15.46	137.24	5,995.2	-1,124.4	1,039.8	1,531.5	0.00	0.00	
6,300.0	15.46	137.24	6,091.6	-1,144.0	1,057.9	1,558.2	0.00	0.00	
6,400.0	15.46	137.24	6,188.0	-1,163.6	1,076.0	1,584.9	0.00	0.00	
6,417.7	15.46	137.24	6,205.0	-1,167.1	1,079.2	1,589.6	0.00	0.00	WILLIAMS_FORK.MBL (TVD)
6,500.0	15.46	137.24	6,284.3	-1,183.2	1,094.1	1,611.5	0.00	0.00	
6,600.0	15.46	137.24	6,380.7	-1,202.7	1,112.2	1,638.2	0.00	0.00	
6,700.0	15.46	137.24	6,477.1	-1,222.3	1,130.3	1,664.9	0.00	0.00	
6,764.0	15.46	137.24	6,538.8	-1,234.8	1,141.9	1,681.9	0.00	0.00	Start Drop -3.00
6,800.0	14.38	137.24	6,573.6	-1,241.7	1,148.2	1,691.2	3.00	-3.00	
6,900.0	11.38	137.24	6,671.0	-1,258.0	1,163.4	1,713.5	3.00	-3.00	
7,000.0	8.38	137.24	6,769.5	-1,270.6	1,175.0	1,730.7	3.00	-3.00	
7,100.0	5.38	137.24	6,868.8	-1,279.4	1,183.2	1,742.6	3.00	-3.00	
7,200.0	2.38	137.24	6,968.6	-1,284.4	1,187.7	1,749.4	3.00	-3.00	
7,279.5	0.00	0.00	7,048.0	-1,285.6	1,188.9	1,751.1	3.00	-3.00	Start 1982.0 hold at 7279.5 MD - TOP_GAS.ME
7,300.0	0.00	0.00	7,068.5	-1,285.6	1,188.9	1,751.1	0.00	0.00	
7,400.0	0.00	0.00	7,168.5	-1,285.6	1,188.9	1,751.1	0.00	0.00	
7,500.0	0.00	0.00	7,268.5	-1,285.6	1,188.9	1,751.1	0.00	0.00	
7,600.0	0.00	0.00	7,368.5	-1,285.6	1,188.9	1,751.1	0.00	0.00	
7,700.0	0.00	0.00	7,468.5	-1,285.6	1,188.9	1,751.1	0.00	0.00	
7,800.0	0.00	0.00	7,568.5	-1,285.6	1,188.9	1,751.1	0.00	0.00	
7,900.0	0.00	0.00	7,668.5	-1,285.6	1,188.9	1,751.1	0.00	0.00	
8,000.0	0.00	0.00	7,768.5	-1,285.6	1,188.9	1,751.1	0.00	0.00	
8,100.0	0.00	0.00	7,868.5	-1,285.6	1,188.9	1,751.1	0.00	0.00	
8,200.0	0.00	0.00	7,968.5	-1,285.6	1,188.9	1,751.1	0.00	0.00	
8,300.0	0.00	0.00	8,068.5	-1,285.6	1,188.9	1,751.1	0.00	0.00	
8,400.0	0.00	0.00	8,168.5	-1,285.6	1,188.9	1,751.1	0.00	0.00	
8,500.0	0.00	0.00	8,268.5	-1,285.6	1,188.9	1,751.1	0.00	0.00	
8,600.0	0.00	0.00	8,368.5	-1,285.6	1,188.9	1,751.1	0.00	0.00	
8,700.0	0.00	0.00	8,468.5	-1,285.6	1,188.9	1,751.1	0.00	0.00	
8,800.0	0.00	0.00	8,568.5	-1,285.6	1,188.9	1,751.1	0.00	0.00	
8,861.5	0.00	0.00	8,630.0	-1,285.6	1,188.9	1,751.1	0.00	0.00	CAMEO.MBL (TVD)
8,900.0	0.00	0.00	8,668.5	-1,285.6	1,188.9	1,751.1	0.00	0.00	
9,000.0	0.00	0.00	8,768.5	-1,285.6	1,188.9	1,751.1	0.00	0.00	
9,100.0	0.00	0.00	8,868.5	-1,285.6	1,188.9	1,751.1	0.00	0.00	
9,111.5	0.00	0.00	8,880.0	-1,285.6	1,188.9	1,751.1	0.00	0.00	ROLLINS.MBL (TVD)
9,200.0	0.00	0.00	8,968.5	-1,285.6	1,188.9	1,751.1	0.00	0.00	
9,261.5	0.00	0.00	9,030.0	-1,285.6	1,188.9	1,751.1	0.00	0.00	TD at 9261.5 - TD.MBL (TVD)

Cathedral Energy Services

Planning Report

Database:	USA EDM 5000 Multi Users DB	Local Co-ordinate Reference:	Well PUCKETT 14C-30
Company:	Caerus Oil & Gas	TVD Reference:	30' KB @ 8270.0usft
Project:	Garfield County, CO (UTM 12N)	MD Reference:	30' KB @ 8270.0usft
Site:	S30-T6S-R96W (MESA I25)	North Reference:	True
Well:	PUCKETT 14C-30	Survey Calculation Method:	Minimum Curvature
Wellbore:	OH		
Design:	PLAN #1		

Targets									
Target Name									
- hit/miss target	Dip Angle	Dip Dir.	TVD	+N/-S	+E/-W	Northing	Easting	Latitude	Longitude
- Shape	(°)	(°)	(usft)	(usft)	(usft)	(usft)	(usft)		
PUCKETT 14C-30 PBHI	0.00	0.00	9,030.0	-1,285.6	1,188.9	14,352,226.40	2,442,506.10	39.487867	-108.157340
- plan hits target center									
- Circle (radius 50.0)									

Formations						
Measured Depth	Vertical Depth	Name	Lithology	Dip	Dip Direction	
(usft)	(usft)			(°)	(°)	
6,143.8	5,941.0	OHIO_CREEK.MBL (TVD)				
6,417.7	6,205.0	WILLIAMS_FORK.MBL (TVD)				
7,279.5	7,048.0	TOP_GAS.MBL (TVD)				
8,861.5	8,630.0	CAMEO.MBL (TVD)				
9,111.5	8,880.0	ROLLINS.MBL (TVD)				
9,261.5	9,030.0	TD.MBL (TVD)				

Plan Annotations					
Measured Depth	Vertical Depth	Local Coordinates			
(usft)	(usft)	+N/-S	+E/-W	Comment	
(usft)	(usft)	(usft)	(usft)		
200.0	200.0	0.0	0.0	Start Build 3.00	
715.5	709.2	-50.8	46.9	Start 6048.5 hold at 715.5 MD	
6,764.0	6,538.8	-1,234.8	1,141.9	Start Drop -3.00	
7,279.5	7,048.0	-1,285.6	1,188.9	Start 1982.0 hold at 7279.5 MD	
9,261.5	9,030.0	-1,285.6	1,188.9	TD at 9261.5	