

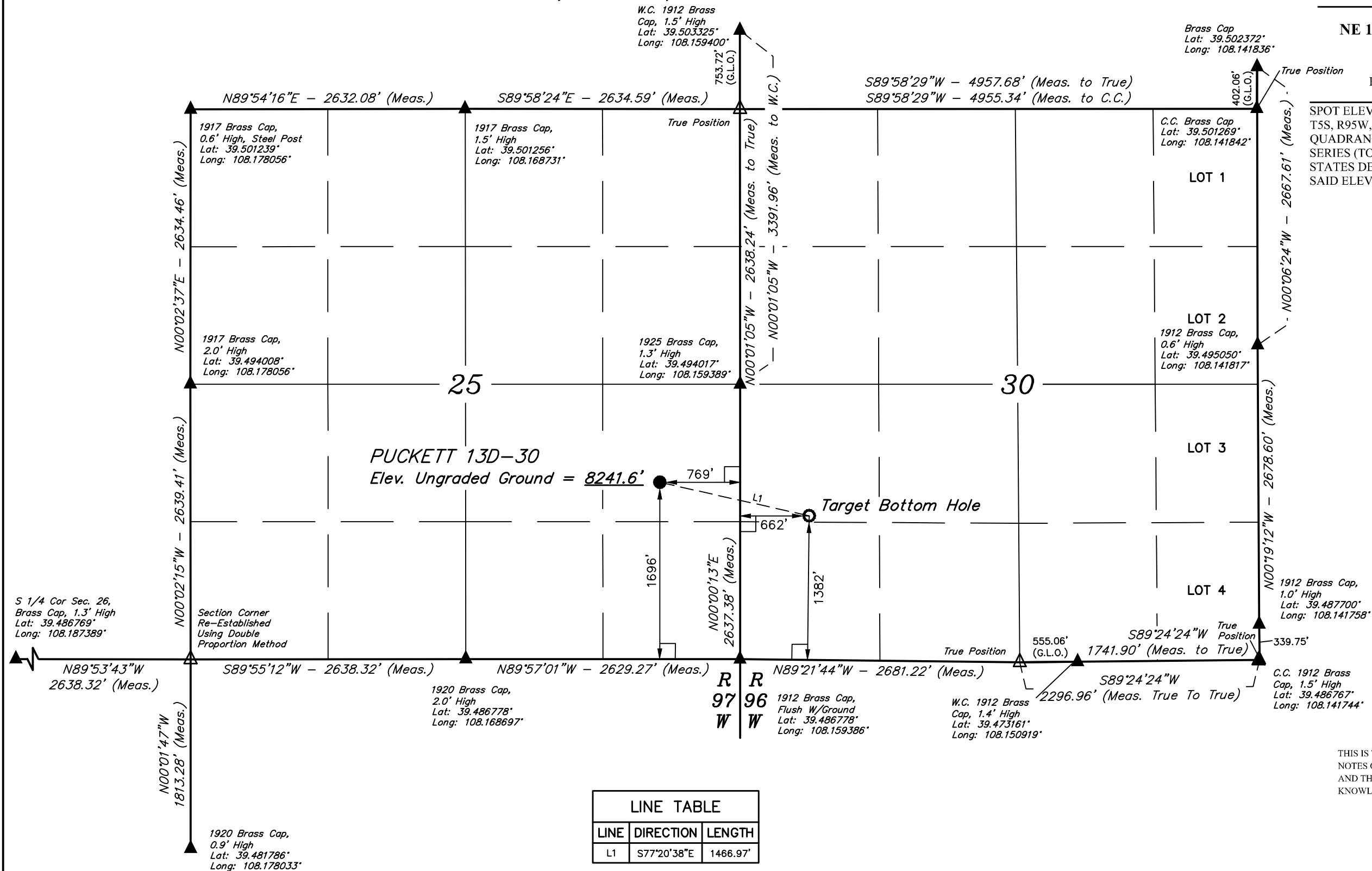
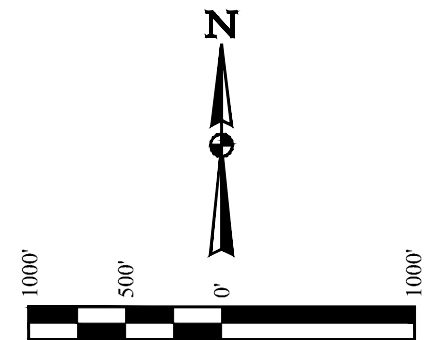
*T6S, R97W, 6th P.M.*

**Caerus Oil & Gas LLC**

**PUCKETT 13D-30**  
**NE 1/4 SE 1/4, SECTION 25, T6S, R97W, 6th P.M.**  
**GARFIELD COUNTY, COLORADO**

**BASIS OF BEARINGS**  
BASIS OF BEARINGS IS A G.P.S. OBSERVATION  
**BASIS OF ELEVATION**

SPOT ELEVATION AT THE NORTHWEST CORNER OF SECTION 30,  
T5S, R95W, 6th P.M. TAKEN FROM THE FORKED GULCH  
QUADRANGLE, COLORADO, GARFIELD COUNTY, 7.5 MINUTE  
SERIES (TOPOGRAPHICAL MAP) PUBLISHED BY THE UNITED  
STATES DEPARTMENT OF THE INTERIOR, GEOLOGICAL SURVEY.  
SAID ELEVATION IS MARKED AS BEING 5966 FEET.



CERTIFICATE






THE ABOVE PLAT WAS PREPARED FROM FIELD  
MEASUREMENTS MADE BY ME OR UNDER MY SUPERVISION  
AND IS TRUE AND CORRECT TO THE BEST OF MY KNOWLEDGE  
AND BELIEF.

*Handwritten Signature*

REGISTERED LAND SURVEYOR  
REGISTRATION NO. 138130  
STATE OF COLORADO

62-05-16

LEGEND:

-  = 90° SYMBOL  
 = PROPOSED WELLHEAD.  
 = TARGET BOTTOM HOLE.  
 = SECTION CORNERS LOCATED. (NAD 83)  
 = SECTION CORNERS RE-ESTABLISHED.  
 (Not Set on Ground.) (NAD 83)

LINE TABLE		
LINE	DIRECTION	LENGTH
L1	S77°20'38"E	1466.97'

**PDOP = 1.3**

<b>NAD 83 (TARGET BOTTOM HOLE)</b>	<b>NAD 83 (SURFACE LOCATION)</b>
LATITUDE = 39°29'25.99" (39.490553)	LATITUDE = 39°29'29.16" (39.491433)
LONGITUDE = 108°09'25.35" (108.157042)	LONGITUDE = 108°09'43.60" (108.162111)
<b>NAD 27 (TARGET BOTTOM HOLE)</b>	<b>NAD 27 (SURFACE LOCATION)</b>
LATITUDE = 39°29'26.07" (39.490575)	LATITUDE = 39°29'29.23" (39.491453)
LONGITUDE = 108°09'23.06" (108.156406)	LONGITUDE = 108°09'41.31" (108.161475)
<b>UTM NAD 27 (ZONE 12)</b>	<b>UTM NAD 27 (ZONE 12)</b>
N: 14353220.70 E: 2442738.60	N: 14353496.00 E: 2441297.63



**UELS, LLC**  
Corporate Office \* 85 South 200 East  
Vernal, UT 84078 \* (435) 789-1017

<b>SURVEYED BY</b>		<b>DATE</b>	<b>REVISED BY</b>	<b>DATE</b>
BRANDEN BOX, B.B.		12-08-15		
<b>DRAWN BY</b>		<b>DATE</b>		
C.D.L.		01-06-16		
<b>SCALE</b>		1" = 1000'		

## WELL LOCATION PLAT