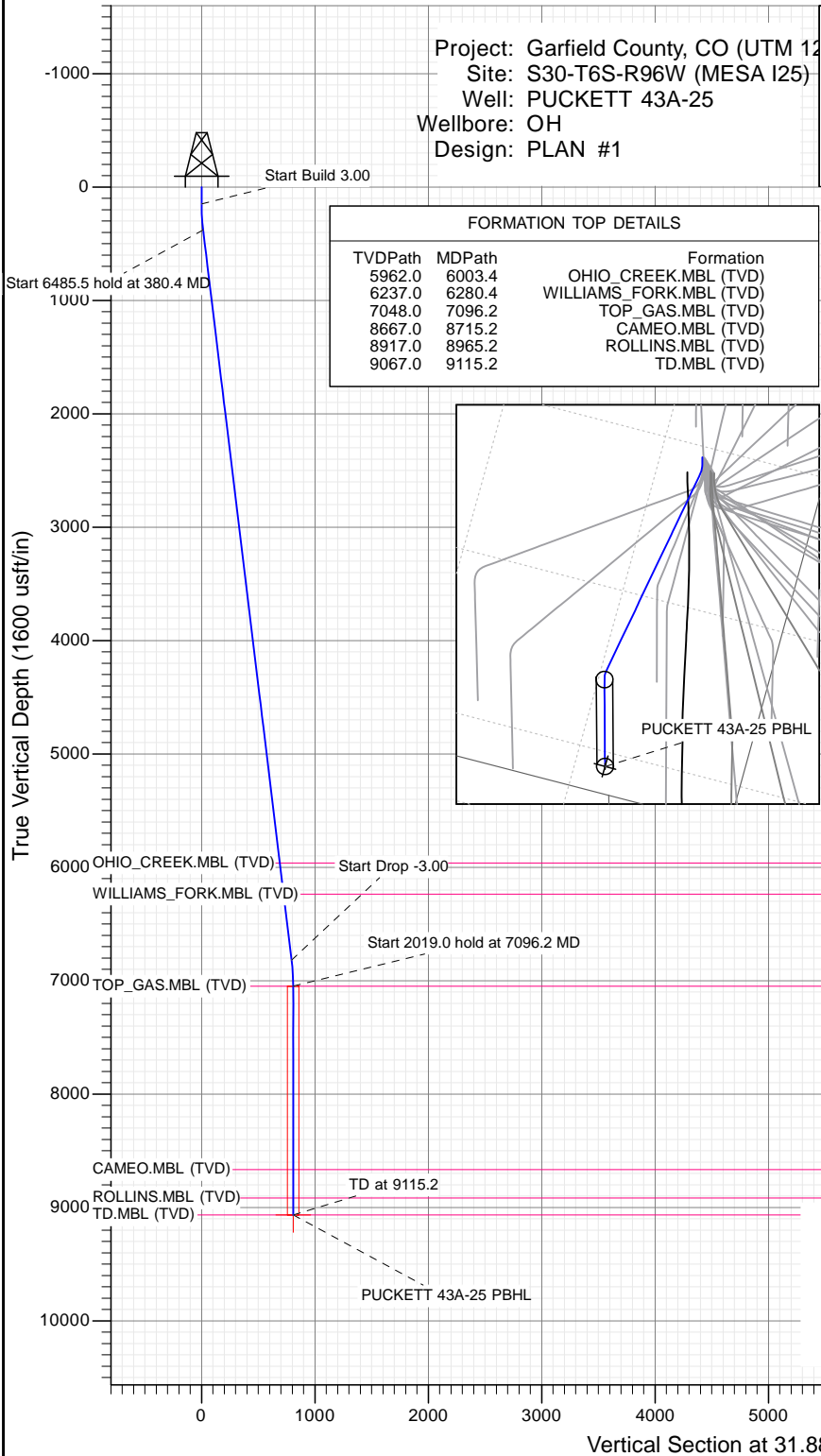




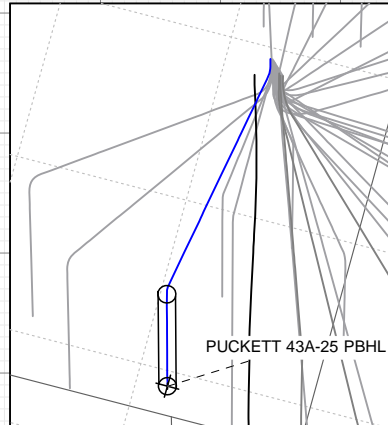
SECTION DETAILS

Sec	MD	Inc	Azi	TVD	+N/-S	+E/-W	Dleg	TFace	Vsect	Target
1	0.0	0.00	0.00	0.0	0.0	0.0	0.00	0.00	0.0	
2	150.0	0.00	0.00	150.0	0.0	0.0	0.00	0.00	0.0	
3	380.4	6.91	31.88	379.8	11.8	7.3	3.00	31.88	13.9	
4	6865.9	6.91	31.88	6818.2	674.5	419.5	0.00	0.00	794.3	
5	7096.2	0.00	0.00	7048.0	686.3	426.8	3.00	180.00	808.2	
6	9115.2	0.00	0.00	9067.0	686.3	426.8	0.00	0.00	808.2	PUCKETT 43A-25 PBHL

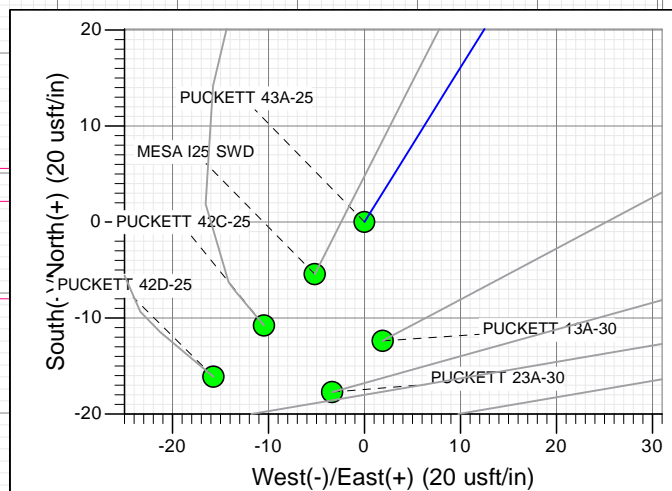
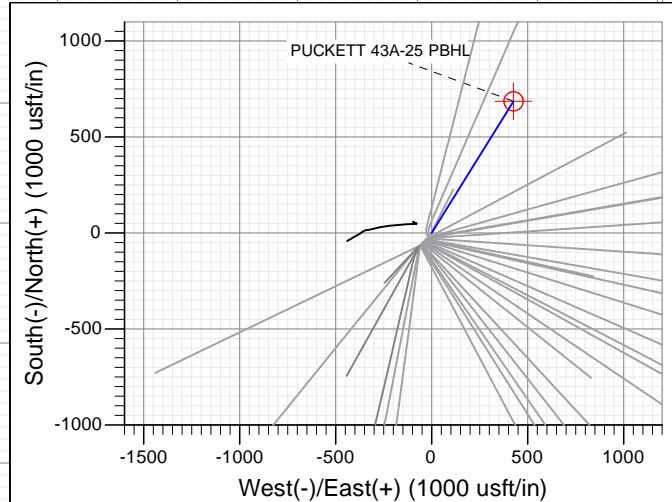
Project: Garfield County, CO (UTM 12
Site: S30-T6S-R96W (MESA I25)
Well: PUCKETT 43A-25
Wellbore: OH
Design: PLAN #1



FORMATION TOP DETAILS		
TVDPath	MDPath	Formation
5962.0	6003.4	OHIO_CREEK.MBL (TVD)
6237.0	6280.4	WILLIAMS_FORK.MBL (TVD)
7048.0	7096.2	TOP_GAS.MBL (TVD)
8667.0	8715.2	CAMEO.MBL (TVD)
8917.0	8965.2	ROLLINS.MBL (TVD)
9067.0	9115.2	TD.MBL (TVD)



PLAN #1 PUCKETT 43A-25 16XXX LR 30' KB @ 8270.0usft Ground Level @ 8240.0 NAD 1927 - Western US Well PUCKETT 43A-25, True North									
Type	Target	Target	Origin	N/S	E/W	From			
TD	No	Target (Freehand)	Slot			TVD	+N/-S	+E/-W	Latitude
Name									Longitude
PUCKETT 43A-25 PBHL						9067.0	686.3	426.8	39.493445
									-108.159878



Azimuths to True North
Magnetic North: 9.80°
Magnetic Field
Strength: 51879.0snT
Dip Angle: 65.85°
Date: 2/19/2016
Model: HDGM

CASING DETAILS

No casing data is available

WELL DETAILS: PUCKETT 43A-25

Ground Level: 8240.0
+N/-S +E/-W Northing Easting Latitude Longitude
0.0 0.0 14353536.00 2441320.70 39.491562 -108.161390



Planning Report

Database:	USA EDM 5000 Multi Users DB	Local Co-ordinate Reference:	Well PUCKETT 43A-25
Company:	Caerus Oil & Gas	TVD Reference:	30' KB @ 8270.0usft
Project:	Garfield County, CO (UTM 12N)	MD Reference:	30' KB @ 8270.0usft
Site:	S30-T6S-R96W (MESA I25)	North Reference:	True
Well:	PUCKETT 43A-25	Survey Calculation Method:	Minimum Curvature
Wellbore:	OH		
Design:	PLAN #1		

Project	Garfield County, CO (UTM 12N)		
Map System:	Universal Transverse Mercator (US Survey Feet)	System Datum:	Mean Sea Level
Geo Datum:	NAD 1927 - Western US		
Map Zone:	Zone 12N (114 W to 108 W)		

Site		S30-T6S-R96W (MESA I25)			
Site Position:		Northing:	14,353,462.90 usft	Latitude:	39.491366
From:	Map	Easting:	2,441,267.20 usft	Longitude:	-108.161587
Position Uncertainty:	0.0 usft	Slot Radius:	13-3/16 "	Grid Convergence:	1.81 °

Well	PUCKETT 43A-25					
Well Position	+N/-S	0.0 usft	Northing:	14,353,536.00 usft	Latitude:	39.491562
	+E/-W	0.0 usft	Easting:	2,441,320.70 usft	Longitude:	-108.161390
Position Uncertainty		0.0 usft	Wellhead Elevation:	0.0 usft	Ground Level:	8,240.0 usft

Wellbore	OH				
Magnetics	Model Name	Sample Date	Declination (°)	Dip Angle (°)	Field Strength (nT)
	HDGM	2/19/2016	9.80	65.85	51,879

Design	PLAN #1			
Audit Notes:				
Version:	Phase:	PLAN	Tie On Depth:	0.0
Vertical Section:	Depth From (TVD) (usft)	+N/-S (usft)	+E/-W (usft)	Direction (°)
	0.0	0.0	0.0	31.88

Plan Sections										
Measured Depth (usft)	Inclination (°)	Azimuth (°)	Vertical Depth (usft)	+N/-S (usft)	+E/-W (usft)	Dogleg Rate (°/100usft)	Build Rate (°/100usft)	Turn Rate (°/100usft)	TFO (°)	Target
0.0	0.00	0.00	0.0	0.0	0.0	0.00	0.00	0.00	0.00	
150.0	0.00	0.00	150.0	0.0	0.0	0.00	0.00	0.00	0.00	
380.4	6.91	31.88	379.8	11.8	7.3	3.00	3.00	0.00	31.88	
6,865.9	6.91	31.88	6,818.2	674.5	419.5	0.00	0.00	0.00	0.00	
7,096.2	0.00	0.00	7,048.0	686.3	426.8	3.00	-3.00	0.00	180.00	
9,115.2	0.00	0.00	9,067.0	686.3	426.8	0.00	0.00	0.00	0.00	PUCKETT 43A-25 PE

Planning Report

Database:	USA EDM 5000 Multi Users DB	Local Co-ordinate Reference:	Well PUCKETT 43A-25
Company:	Caerus Oil & Gas	TVD Reference:	30' KB @ 8270.0usft
Project:	Garfield County, CO (UTM 12N)	MD Reference:	30' KB @ 8270.0usft
Site:	S30-T6S-R96W (MESA I25)	North Reference:	True
Well:	PUCKETT 43A-25	Survey Calculation Method:	Minimum Curvature
Wellbore:	OH		
Design:	PLAN #1		

Planned Survey									
Measured Depth (usft)	Inclination (°)	Azimuth (°)	Vertical Depth (usft)	+N/-S (usft)	+E/-W (usft)	Vertical Section (usft)	Dogleg Rate (°/100usft)	Build Rate (°/100u)	Comments / Formations
0.0	0.00	0.00	0.0	0.0	0.0	0.0	0.00	0.00	
100.0	0.00	0.00	100.0	0.0	0.0	0.0	0.00	0.00	
150.0	0.00	0.00	150.0	0.0	0.0	0.0	0.00	0.00	Start Build 3.00
200.0	1.50	31.88	200.0	0.6	0.3	0.7	3.00	3.00	
300.0	4.50	31.88	299.8	5.0	3.1	5.9	3.00	3.00	
380.4	6.91	31.88	379.8	11.8	7.3	13.9	3.00	3.00	Start 6485.5 hold at 380.4 MD
400.0	6.91	31.88	399.3	13.8	8.6	16.2	0.00	0.00	
500.0	6.91	31.88	498.6	24.0	14.9	28.3	0.00	0.00	
600.0	6.91	31.88	597.8	34.2	21.3	40.3	0.00	0.00	
700.0	6.91	31.88	697.1	44.4	27.6	52.3	0.00	0.00	
800.0	6.91	31.88	796.4	54.7	34.0	64.4	0.00	0.00	
900.0	6.91	31.88	895.7	64.9	40.4	76.4	0.00	0.00	
1,000.0	6.91	31.88	994.9	75.1	46.7	88.4	0.00	0.00	
1,100.0	6.91	31.88	1,094.2	85.3	53.1	100.5	0.00	0.00	
1,200.0	6.91	31.88	1,193.5	95.5	59.4	112.5	0.00	0.00	
1,300.0	6.91	31.88	1,292.8	105.8	65.8	124.5	0.00	0.00	
1,400.0	6.91	31.88	1,392.0	116.0	72.1	136.6	0.00	0.00	
1,500.0	6.91	31.88	1,491.3	126.2	78.5	148.6	0.00	0.00	
1,600.0	6.91	31.88	1,590.6	136.4	84.8	160.6	0.00	0.00	
1,700.0	6.91	31.88	1,689.9	146.6	91.2	172.7	0.00	0.00	
1,800.0	6.91	31.88	1,789.1	156.8	97.6	184.7	0.00	0.00	
1,900.0	6.91	31.88	1,888.4	167.1	103.9	196.7	0.00	0.00	
2,000.0	6.91	31.88	1,987.7	177.3	110.3	208.8	0.00	0.00	
2,100.0	6.91	31.88	2,086.9	187.5	116.6	220.8	0.00	0.00	
2,200.0	6.91	31.88	2,186.2	197.7	123.0	232.8	0.00	0.00	
2,300.0	6.91	31.88	2,285.5	207.9	129.3	244.9	0.00	0.00	
2,400.0	6.91	31.88	2,384.8	218.2	135.7	256.9	0.00	0.00	
2,500.0	6.91	31.88	2,484.0	228.4	142.0	268.9	0.00	0.00	
2,600.0	6.91	31.88	2,583.3	238.6	148.4	281.0	0.00	0.00	
2,700.0	6.91	31.88	2,682.6	248.8	154.8	293.0	0.00	0.00	
2,800.0	6.91	31.88	2,781.9	259.0	161.1	305.0	0.00	0.00	
2,900.0	6.91	31.88	2,881.1	269.3	167.5	317.1	0.00	0.00	
3,000.0	6.91	31.88	2,980.4	279.5	173.8	329.1	0.00	0.00	
3,100.0	6.91	31.88	3,079.7	289.7	180.2	341.1	0.00	0.00	
3,200.0	6.91	31.88	3,179.0	299.9	186.5	353.2	0.00	0.00	
3,300.0	6.91	31.88	3,278.2	310.1	192.9	365.2	0.00	0.00	
3,400.0	6.91	31.88	3,377.5	320.3	199.2	377.2	0.00	0.00	
3,500.0	6.91	31.88	3,476.8	330.6	205.6	389.3	0.00	0.00	
3,600.0	6.91	31.88	3,576.0	340.8	212.0	401.3	0.00	0.00	
3,700.0	6.91	31.88	3,675.3	351.0	218.3	413.4	0.00	0.00	
3,800.0	6.91	31.88	3,774.6	361.2	224.7	425.4	0.00	0.00	
3,900.0	6.91	31.88	3,873.9	371.4	231.0	437.4	0.00	0.00	
4,000.0	6.91	31.88	3,973.1	381.7	237.4	449.5	0.00	0.00	
4,100.0	6.91	31.88	4,072.4	391.9	243.7	461.5	0.00	0.00	
4,200.0	6.91	31.88	4,171.7	402.1	250.1	473.5	0.00	0.00	
4,300.0	6.91	31.88	4,271.0	412.3	256.4	485.6	0.00	0.00	
4,400.0	6.91	31.88	4,370.2	422.5	262.8	497.6	0.00	0.00	
4,500.0	6.91	31.88	4,469.5	432.7	269.2	509.6	0.00	0.00	
4,600.0	6.91	31.88	4,568.8	443.0	275.5	521.7	0.00	0.00	
4,700.0	6.91	31.88	4,668.1	453.2	281.9	533.7	0.00	0.00	
4,800.0	6.91	31.88	4,767.3	463.4	288.2	545.7	0.00	0.00	
4,900.0	6.91	31.88	4,866.6	473.6	294.6	557.8	0.00	0.00	

Planning Report

Database:	USA EDM 5000 Multi Users DB	Local Co-ordinate Reference:	Well PUCKETT 43A-25
Company:	Caerus Oil & Gas	TVD Reference:	30' KB @ 8270.0usft
Project:	Garfield County, CO (UTM 12N)	MD Reference:	30' KB @ 8270.0usft
Site:	S30-T6S-R96W (MESA I25)	North Reference:	True
Well:	PUCKETT 43A-25	Survey Calculation Method:	Minimum Curvature
Wellbore:	OH		
Design:	PLAN #1		

Planned Survey									
Measured Depth (usft)	Inclination (°)	Azimuth (°)	Vertical Depth (usft)	+N/-S (usft)	+E/-W (usft)	Vertical Section (usft)	Dogleg Rate (°/100usft)	Build Rate (°/100u)	Comments / Formations
5,000.0	6.91	31.88	4,965.9	483.8	300.9	569.8	0.00	0.00	
5,100.0	6.91	31.88	5,065.1	494.1	307.3	581.8	0.00	0.00	
5,200.0	6.91	31.88	5,164.4	504.3	313.6	593.9	0.00	0.00	
5,300.0	6.91	31.88	5,263.7	514.5	320.0	605.9	0.00	0.00	
5,400.0	6.91	31.88	5,363.0	524.7	326.4	617.9	0.00	0.00	
5,500.0	6.91	31.88	5,462.2	534.9	332.7	630.0	0.00	0.00	
5,600.0	6.91	31.88	5,561.5	545.2	339.1	642.0	0.00	0.00	
5,700.0	6.91	31.88	5,660.8	555.4	345.4	654.0	0.00	0.00	
5,800.0	6.91	31.88	5,760.1	565.6	351.8	666.1	0.00	0.00	
5,900.0	6.91	31.88	5,859.3	575.8	358.1	678.1	0.00	0.00	
6,000.0	6.91	31.88	5,958.6	586.0	364.5	690.1	0.00	0.00	
6,003.4	6.91	31.88	5,962.0	586.4	364.7	690.5	0.00	0.00	OHIO_CREEK.MBL (TVD)
6,100.0	6.91	31.88	6,057.9	596.2	370.8	702.2	0.00	0.00	
6,200.0	6.91	31.88	6,157.2	606.5	377.2	714.2	0.00	0.00	
6,280.4	6.91	31.88	6,237.0	614.7	382.3	723.9	0.00	0.00	WILLIAMS_FORK.MBL (TVD)
6,300.0	6.91	31.88	6,256.4	616.7	383.6	726.2	0.00	0.00	
6,400.0	6.91	31.88	6,355.7	626.9	389.9	738.3	0.00	0.00	
6,500.0	6.91	31.88	6,455.0	637.1	396.3	750.3	0.00	0.00	
6,600.0	6.91	31.88	6,554.2	647.3	402.6	762.3	0.00	0.00	
6,700.0	6.91	31.88	6,653.5	657.6	409.0	774.4	0.00	0.00	
6,800.0	6.91	31.88	6,752.8	667.8	415.3	786.4	0.00	0.00	
6,865.9	6.91	31.88	6,818.2	674.5	419.5	794.3	0.00	0.00	Start Drop -3.00
6,900.0	5.89	31.88	6,852.1	677.7	421.5	798.1	3.00	-3.00	
7,000.0	2.89	31.88	6,951.8	684.2	425.6	805.8	3.00	-3.00	
7,096.2	0.00	0.00	7,048.0	686.3	426.8	808.2	3.00	-3.00	Start 2019.0 hold at 7096.2 MD - TOP_GAS.ME
7,100.0	0.00	0.00	7,051.8	686.3	426.8	808.2	0.00	0.00	
7,200.0	0.00	0.00	7,151.8	686.3	426.8	808.2	0.00	0.00	
7,300.0	0.00	0.00	7,251.8	686.3	426.8	808.2	0.00	0.00	
7,400.0	0.00	0.00	7,351.8	686.3	426.8	808.2	0.00	0.00	
7,500.0	0.00	0.00	7,451.8	686.3	426.8	808.2	0.00	0.00	
7,600.0	0.00	0.00	7,551.8	686.3	426.8	808.2	0.00	0.00	
7,700.0	0.00	0.00	7,651.8	686.3	426.8	808.2	0.00	0.00	
7,800.0	0.00	0.00	7,751.8	686.3	426.8	808.2	0.00	0.00	
7,900.0	0.00	0.00	7,851.8	686.3	426.8	808.2	0.00	0.00	
8,000.0	0.00	0.00	7,951.8	686.3	426.8	808.2	0.00	0.00	
8,100.0	0.00	0.00	8,051.8	686.3	426.8	808.2	0.00	0.00	
8,200.0	0.00	0.00	8,151.8	686.3	426.8	808.2	0.00	0.00	
8,300.0	0.00	0.00	8,251.8	686.3	426.8	808.2	0.00	0.00	
8,400.0	0.00	0.00	8,351.8	686.3	426.8	808.2	0.00	0.00	
8,500.0	0.00	0.00	8,451.8	686.3	426.8	808.2	0.00	0.00	
8,600.0	0.00	0.00	8,551.8	686.3	426.8	808.2	0.00	0.00	
8,700.0	0.00	0.00	8,651.8	686.3	426.8	808.2	0.00	0.00	
8,715.2	0.00	0.00	8,667.0	686.3	426.8	808.2	0.00	0.00	CAMEO.MBL (TVD)
8,800.0	0.00	0.00	8,751.8	686.3	426.8	808.2	0.00	0.00	
8,900.0	0.00	0.00	8,851.8	686.3	426.8	808.2	0.00	0.00	
8,965.2	0.00	0.00	8,917.0	686.3	426.8	808.2	0.00	0.00	ROLLINS.MBL (TVD)
9,000.0	0.00	0.00	8,951.8	686.3	426.8	808.2	0.00	0.00	
9,100.0	0.00	0.00	9,051.8	686.3	426.8	808.2	0.00	0.00	
9,115.2	0.00	0.00	9,067.0	686.3	426.8	808.2	0.00	0.00	TD at 9115.2 - TD.MBL (TVD)

Planning Report

Database:	USA EDM 5000 Multi Users DB	Local Co-ordinate Reference:	Well PUCKETT 43A-25
Company:	Caerus Oil & Gas	TVD Reference:	30' KB @ 8270.0usft
Project:	Garfield County, CO (UTM 12N)	MD Reference:	30' KB @ 8270.0usft
Site:	S30-T6S-R96W (MESA I25)	North Reference:	True
Well:	PUCKETT 43A-25	Survey Calculation Method:	Minimum Curvature
Wellbore:	OH		
Design:	PLAN #1		

Targets									
Target Name									
- hit/miss target	Dip Angle	Dip Dir.	TVD	+N/-S	+E/-W	Northing	Easting	Latitude	Longitude
- Shape	(°)	(°)	(usft)	(usft)	(usft)	(usft)	(usft)		
PUCKETT 43A-25 PBHL	0.00	0.00	9,067.0	686.3	426.8	14,354,235.40	2,441,725.70	39.493445	-108.159878
- plan hits target center									
- Circle (radius 50.0)									

Formations						
Measured Depth	Vertical Depth	Name	Lithology	Dip	Dip Direction	
(usft)	(usft)			(°)	(°)	
6,003.4	5,962.0	OHIO_CREEK.MBL (TVD)				
6,280.4	6,237.0	WILLIAMS_FORK.MBL (TVD)				
7,096.2	7,048.0	TOP_GAS.MBL (TVD)				
8,715.2	8,667.0	CAMEO.MBL (TVD)				
8,965.2	8,917.0	ROLLINS.MBL (TVD)				
9,115.2	9,067.0	TD.MBL (TVD)				

Plan Annotations					
Measured Depth	Vertical Depth	Local Coordinates			
(usft)	(usft)	+N/-S	+E/-W	Comment	
(usft)	(usft)	(usft)	(usft)		
150.0	150.0	0.0	0.0	Start Build 3.00	
380.4	379.8	11.8	7.3	Start 6485.5 hold at 380.4 MD	
6,865.9	6,818.2	674.5	419.5	Start Drop -3.00	
7,096.2	7,048.0	686.3	426.8	Start 2019.0 hold at 7096.2 MD	
9,115.2	9,067.0	686.3	426.8	TD at 9115.2	