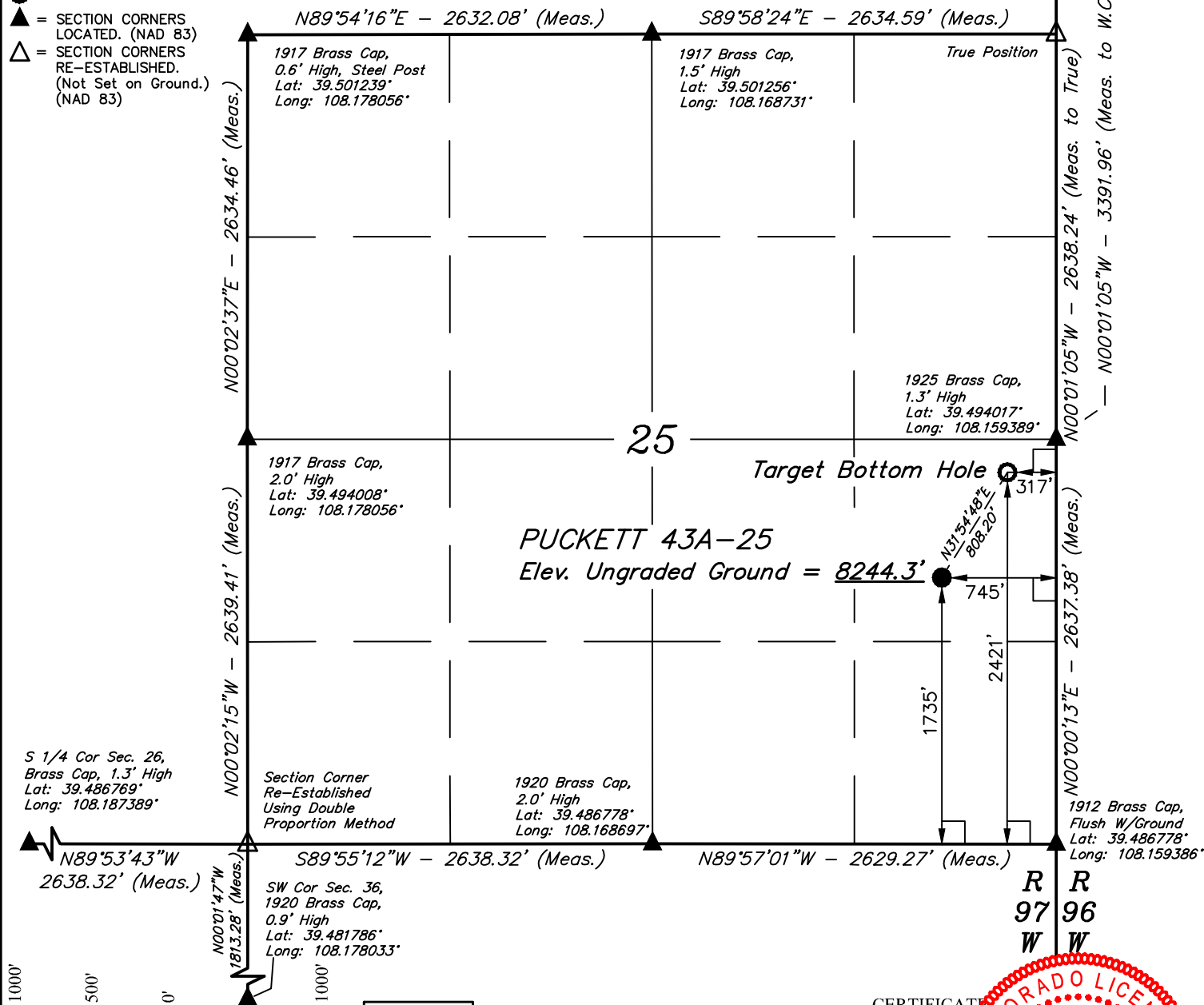


# LEGEND:

- = 90° SYMBOL
- = PROPOSED WELLHEAD.
- = TARGET BOTTOM HOLE.
- ▲ = SECTION CORNERS LOCATED. (NAD 83)
- △ = SECTION CORNERS RE-ESTABLISHED. (Not Set on Ground.) (NAD 83)

T6S, R97W, 6th P.M.

W.C. 1912 Brass  
Cap, 1.5' High  
Lat: 39.503325°  
Long: 108.159400°



PDOP = 1.3

NAD 83 (TARGET BOTTOM HOLE)	NAD 83 (SURFACE LOCATION)
LATITUDE = 39°29'36.32" (39.493422)	LATITUDE = 39°29'29.54" (39.491539)
LONGITUDE = 108°09'37.85" (108.160514)	LONGITUDE = 108°09'43.29" (108.162025)
NAD 27 (TARGET BOTTOM HOLE)	NAD 27 (SURFACE LOCATION)
LATITUDE = 39°29'36.40" (39.493444)	LATITUDE = 39°29'29.62" (39.491561)
LONGITUDE = 108°09'35.56" (108.159878)	LONGITUDE = 108°09'41.00" (108.161389)
UTM NAD 27 (ZONE 12)	UTM NAD 27 (ZONE 12)
N: 14354235.40 E: 2441725.70	N: 14353535.96 E: 2441320.69

## CERTIFICATE

THIS IS TO CERTIFY THAT THE ABOVE PLAT WAS PREPARED FROM FIELD NOTES OF ACTUAL SURVEYS MADE BY ME UNDER MY SUPERVISION AND THAT THE SAME ARE TRUE AND CORRECT TO THE BEST OF MY KNOWLEDGE AND BELIEF.

Handwritten signature: *Harold Marshall*  
REGISTERED LAND SURVEYOR  
REGISTRATION NO. 38130  
STATE OF COLORADO  
02-05-16

## BASIS OF BEARINGS

BASIS OF BEARINGS IS A G.P.S. OBSERVATION

## BASIS OF ELEVATION

BENCH MARK (M67) LOCATED IN THE SW 1/4 OF SECTION 9, T5S, R4W, U.S.B.&M., TAKEN FROM THE DUCHESNE SE, QUADRANGLE, UTAH, DUCHESNE COUNTY, 7.5 MINUTE QUAD. (TOPOGRAPHIC MAP) PUBLISHED BY THE UNITED STATES DEPARTMENT OF THE INTERIOR, GEOLOGICAL SURVEY. SAID ELEVATION IS MARKED AS BEING 6097 FEET.

UELS, LLC

Corporate Office \* 85 South 200 East  
Vernal, UT 84078 \* (435) 789-1017

## Caerus Oil & Gas LLC

PUCKETT 43A-25  
NE 1/4 SE 1/4, SECTION 25, T6S, R97W, 6th P.M.  
GARFIELD COUNTY, COLORADO

SURVEYED BY	DATE	REVISED BY	DATE
BRANDEN BOX, B.B.	12-08-15		
DRAWN BY	DATE		
C.D.L.	01-06-16		
SCALE	1" = 1000'		

## WELL LOCATION PLAT

