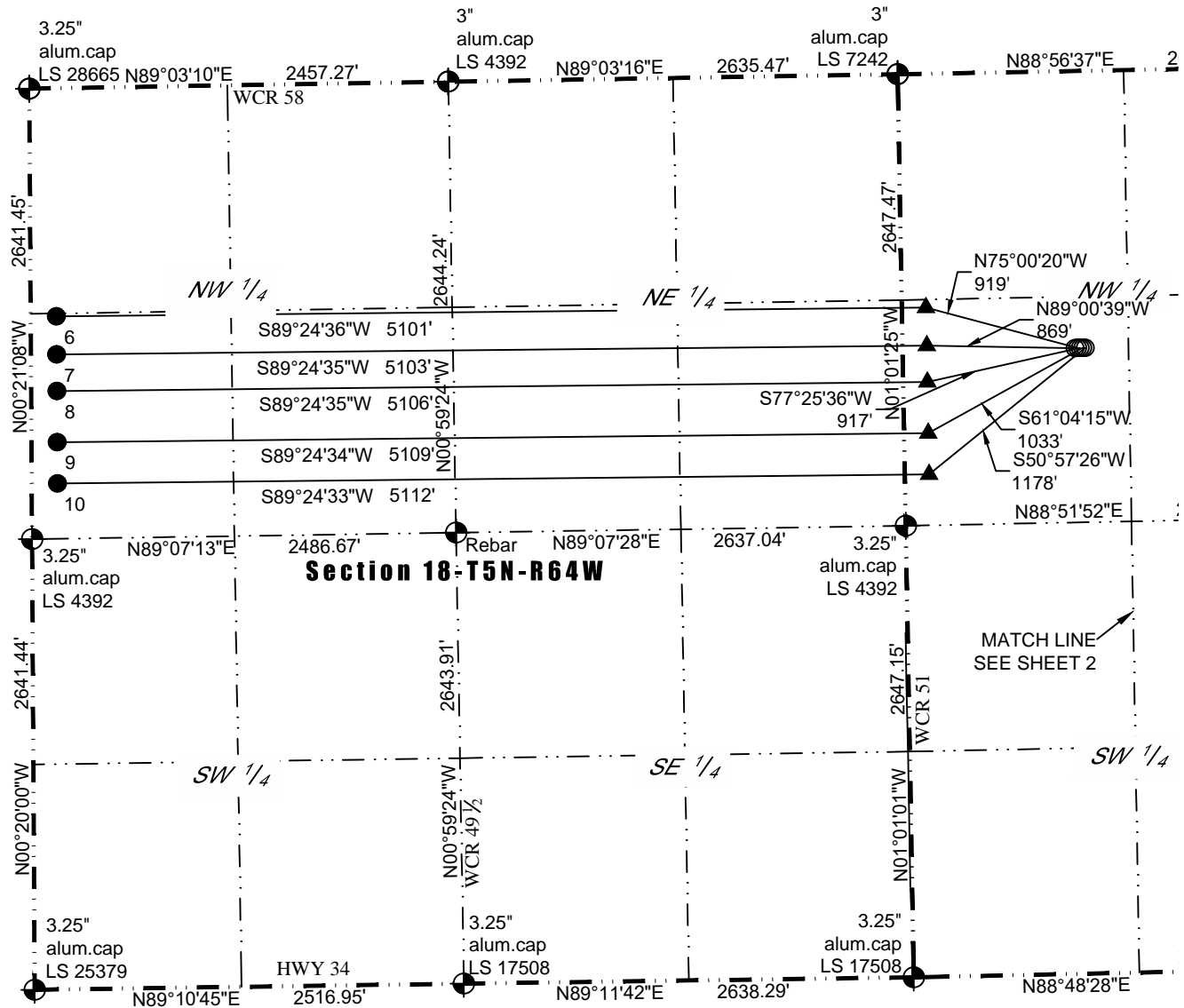






MULI-WELL PLAN
SCHAUMBERG 5N64W17A PAD
(WEST LATERALS)

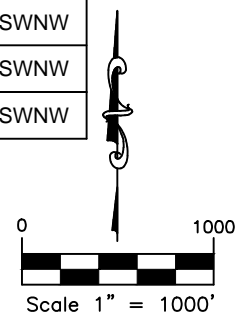
SECTION: 17
TOWNSHIP: 5N
RANGE: 64W
6TH P.M.
WELD COUNTY, CO



#	WELL NAME	BHL FOOTAGES				BHL LAT	BHL LONG	BHL S-T-R	BHL ¼ ¼
6	SCHAUMBERG 17F-204	1338	FNL	150	FWL	N40.402678°	W104.601284°	18-5-64	SWNW
7	SCHAUMBERG 17F-334	1561	FNL	150	FWL	N40.402066°	W104.601288°	18-5-64	SWNW
8	SCHAUMBERG 17F-234	1775	FNL	150	FWL	N40.401478°	W104.601291°	18-5-64	SWNW
9	SCHAUMBERG 17G-314	2075	FNL	150	FWL	N40.400655°	W104.601295°	18-5-64	SWNW
10	SCHAUMBERG 17G-214	2317	FNL	150	FWL	N40.399991°	W104.601298°	18-5-64	SWNW

LEGEND:

-  ALIQUOT CORNER AS DESCRIBED
 SURFACE HOLE LOCATION (SHL)
 ENTRY POINT (EP)
 BOTTOM HOLE LOCATION (BHL)

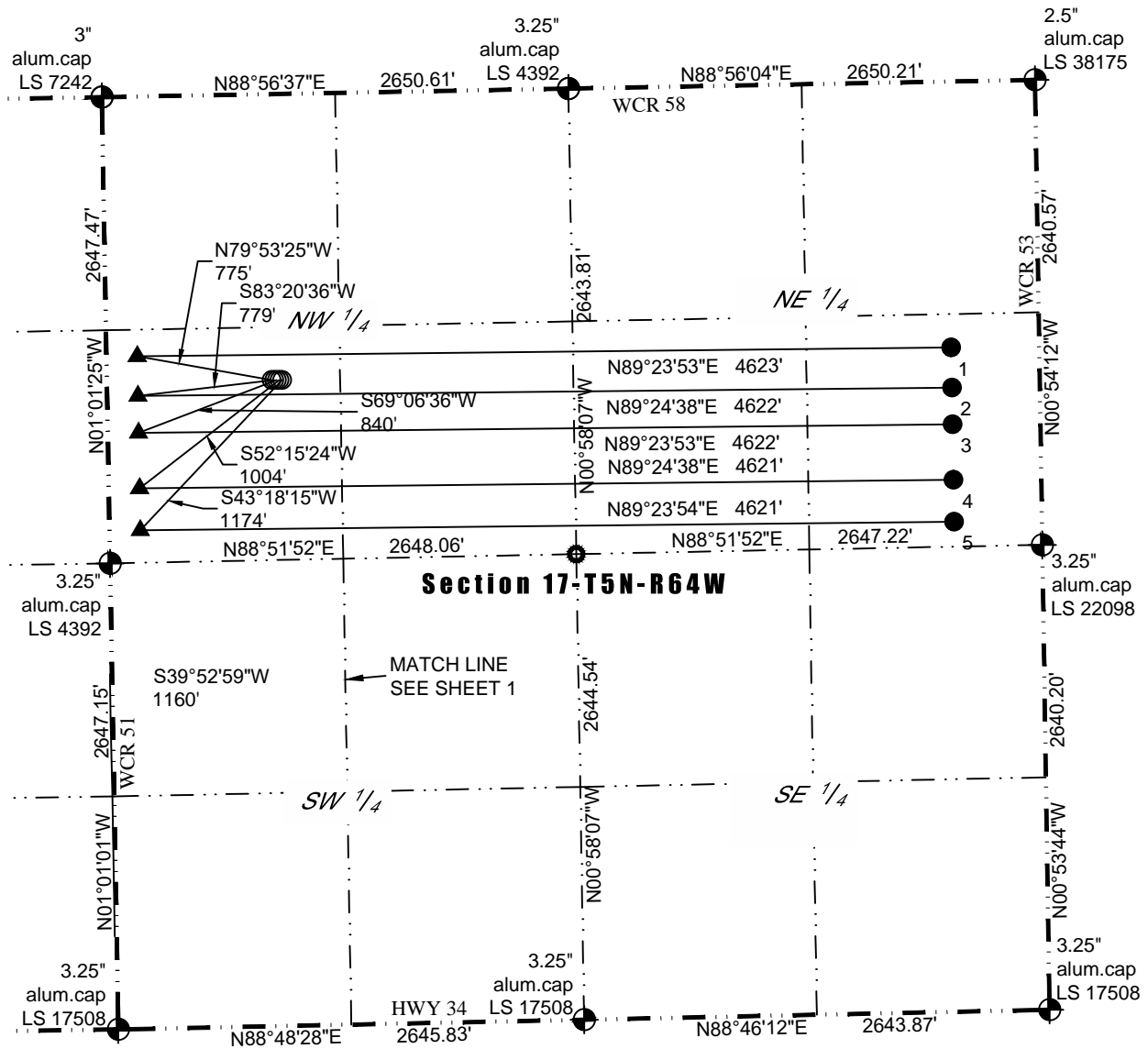




Washburn Land Surveying
www.WashburnSurveying.com
970-232-9645

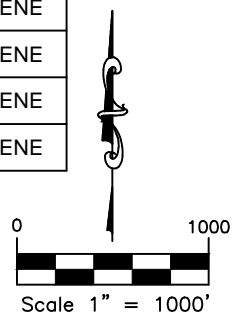
MULI-WELL PLAN SCHAUMBERG 5N64W17A PAD (EAST LATERALS)

SECTION: 17
TOWNSHIP: 5N
RANGE: 64W
6TH P.M.
WELD COUNTY, CO



LEGEND:

- ALIQUOT CORNER AS DESCRIBED
- SURFACE HOLE LOCATION (SHL)
- ▲ ENTRY POINT (EP)
- BOTTOM HOLE LOCATION (BHL)





Washburn Land Surveying
www.WashburnSurveying.com
970-232-9645

MULI-WELL PLAN

SCHAUMBERG 5N64W17A PAD

SECTION: 17
TOWNSHIP: 5N
RANGE: 64W
6TH P.M.
WELD COUNTY, CO

