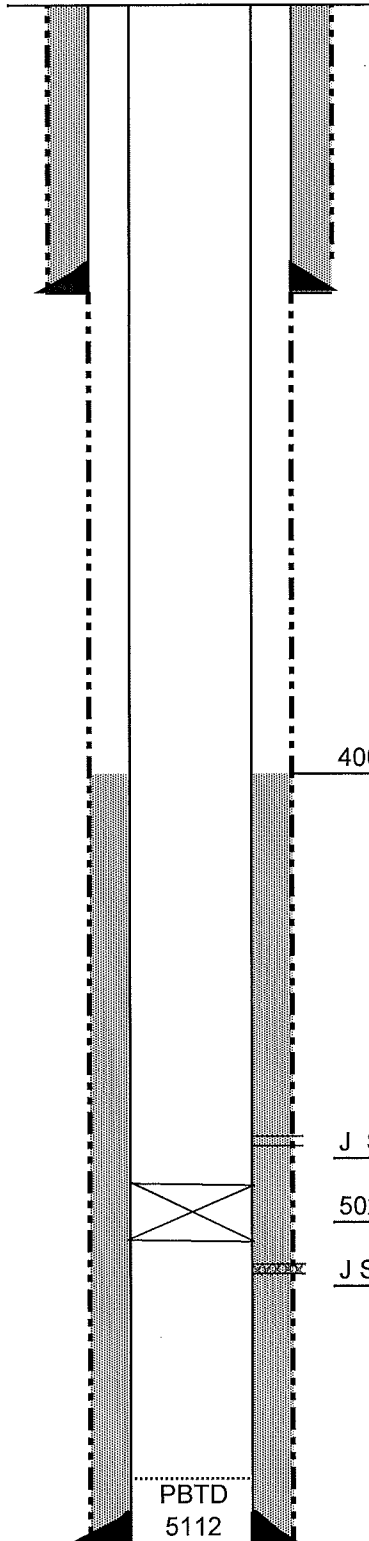


# Current Wellbore Diagram

LEASE Segelke WELL NO. 2 API: 05- 075-05029  
NW SW Sec 30 , T 6N , R 54W Logan County, Colorado

## PRODUCTION ZONE:

Dakota J



## SURFACE CASING

8-5/8" Surface Casing @ 160 '  
with 150 sacks  
Top of Cement @ Circulated to Surface

4003' Top of Cement

J Sand 5014-18

5022' - Cement Retainer

J Sand 5026-32 (squeezed w/ 75 sacks)

## PRODUCTION CASING

5-1/2" , 14 # Prod CSG @ 5,111 '  
with 150 sacks  
TOP OF CEMENT @ 4,003 '

TD: 5112

# Proposed Wellbore Diagram

LEASE Segelke  
NW SW

Sec 30, T 6N, R 54W

WELL NO. 2 API: 05- 075-05029  
Logan County, Colorado

