

WPX Energy Rocky Mountain LLC-EBUS

Federal RGU 543-26-198

Aztec 1000

Post Job Summary

Cement Production Casing

Date Prepared: 02/12/2015

Job Date: 02/4/2015

Submitted by: Jenna Cook – Grand Junction Cement Engineer

The Road to Excellence Starts with Safety

Sold To #: 300721	Ship To #: 3124439	Quote #:	Sales Order #: 0902074048
Customer: WPX ENERGY ROCKY MOUNTAIN LLC-EBUS		Customer Rep: RICK MORTIMER	
Well Name: FEDERAL		Well #: RGU 543-26-198	API/UWI #: 05-103-11964-00
Field: SULPHUR CREEK	City (SAP): MEEKER	County/Parish: RIO BLANCO	State: COLORADO
Legal Description: 26-1S-98W-2473FNL-914FEL			
Contractor: CYCLONE		Rig/Platform Name/Num: CYCLONE 29	
Job BOM: 7523			
Well Type: DIRECTIONAL GAS			
Sales Person: HALAMERICA\HB50180		Srvc Supervisor: Jesse Slaughter	
Job			

Formation Name			
Formation Depth (MD)	Top		Bottom
Form Type	BHST		
Job depth MD	12587ft	Job Depth TVD	12510ft
Water Depth		Wk Ht Above Floor	4ft
Perforation Depth (MD)	From	To	

Well Data										
Description	New / Used	Size in	ID in	Weight lbm/ft	Thread	Grade	Top MD ft	Bottom MD ft	Top TVD ft	Bottom TVD ft
Casing		9.625	8.921	36			0	3996		0
Casing		4.5	4	11.6			0	12587		0
Open Hole Section			8.75				3996	10620	0	0
Open Hole Section			7.875				10620	12597	0	0

Tools and Accessories									
Type	Size in	Qty	Make	Depth ft		Type	Size in	Qty	Make
Guide Shoe	4.5	1		12587		Top Plug	4.5	1	HES
Float Shoe	4.5	1				Bottom Plug	4.5		HES
Float Collar	4.5	1				SSR plug set	4.5		HES
Insert Float	4.5	1				Plug Container	4.5	1	HES
Stage Tool	4.5	1				Centralizers	4.5		HES

Miscellaneous Materials											
Gelling Agt		Conc		Surfactant		Conc		Acid Type		Qty	Conc
Treatment Fld		Conc		Inhibitor		Conc		Sand Type		Size	Qty

Fluid Data										
Stage/Plug #: 1										
Fluid #	Stage Type	Fluid Name	Qty	Qty UoM	Mixing Density lbm/gal	Yield ft3/sack	Mix Fluid Gal	Rate bbl/min	Total Mix Fluid Gal	
1	Fresh Water	Fresh Water	100	bbl	8.3			5		
Fluid #	Stage Type	Fluid Name	Qty	Qty UoM	Mixing Density lbm/gal	Yield ft3/sack	Mix Fluid Gal	Rate bbl/min	Total Mix Fluid Gal	

2	ExtendaCem GJ1	EXTENDACEM (TM) SYSTEM	615	sack	11	2.75		6	16.08
16.08 Gal		FRESH WATER							
Fluid #	Stage Type	Fluid Name	Qty	Qty UoM	Mixing Density lbm/gal	Yield ft3/sack	Mix Fluid Gal	Rate bbl/mi n	Total Mix Fluid Gal
3	EconoCem GJ1	ECONOCEM (TM) SYSTEM	380	sack	12.7	1.91		8	10.07
10.25 Gal		FRESH WATER							
Fluid #	Stage Type	Fluid Name	Qty	Qty UoM	Mixing Density lbm/gal	Yield ft3/sack	Mix Fluid Gal	Rate bbl/mi n	Total Mix Fluid Gal
4	ThermaCem GJ1	THERMACEM (TM) SYSTEM	960	sack	13.5	1.75		8	8.23
8.32 Gal		FRESH WATER							
Fluid #	Stage Type	Fluid Name	Qty	Qty UoM	Mixing Density lbm/gal	Yield ft3/sack	Mix Fluid Gal	Rate bbl/mi n	Total Mix Fluid Gal
5	Displacement	Displacement	194.5	bbl	8.5			10	
Cement Left In Pipe		Amount	31.34 ft		Reason		Shoe Joint		
Comment									

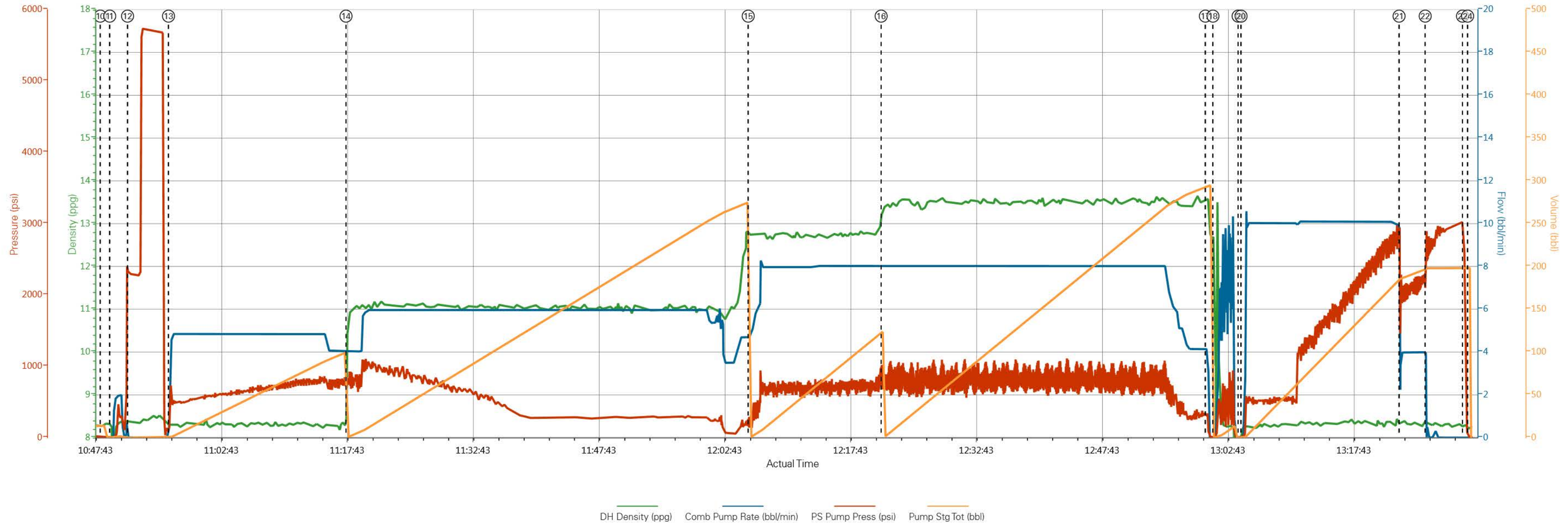
3.1 Job Event Log

Type	Seq. No.	Activity	Graph Label	Date	Time	Source	DH Density (ppg)	Comb Pump Rate (bbl/min)	PS Pump Press (psi)	Pump Stg Tot (bbl)	Comment
Event	1	Call Out	Call Out	2/3/2015	22:00:00	USER					
Event	2	Pre-Convoy Safety Meeting	Pre-Convoy Safety Meeting	2/4/2015	00:50:00	USER					WITH ALL HES PERSONNEL
Event	3	Crew Leave Yard	Crew Leave Yard	2/4/2015	01:00:00	USER					
Event	4	Arrive At Loc	Arrive At Loc	2/4/2015	04:00:00	USER					RIG WAS RUNNING CASING UPON HES ARRIVAL
Event	5	Assessment Of Location Safety Meeting	Assessment Of Location Safety Meeting	2/4/2015	04:10:00	USER					WITH ALL HES PERSONNEL
Event	6	Other	Spot Equipment	2/4/2015	04:20:00	USER					
Event	7	Pre-Rig Up Safety Meeting	Pre-Rig Up Safety Meeting	2/4/2015	04:25:00	USER					WITH ALL HES PERSONNEL
Event	8	Rig-Up Equipment	Rig-Up Equipment	2/4/2015	04:30:00	USER					
Event	9	Pre-Job Safety Meeting	Pre-Job Safety Meeting	2/4/2015	10:38:39	USER					WITH ALL PERSONNEL. PRIOR TO STARTING JOB RIG CIRCULATED AT 100 SPM FOR 3 HOURS.
Event	10	Start Job	Start Job	2/4/2015	10:48:30	USER					TD 12597 FT, TVD 12510 FT, TP 12587 FT, SHOE 31.34 FT, CSG 4 1/2 IN 11.6 LB/FT, SFC CASING 3996 FT 9 5/8 IN 36 LB/FT, HOLE 3996-8629 FT 8 3/4 IN, 8629-10620 FT 8 1/2 IN, 10620-TD 7 7/8 IN, MUD WT 9.8 PPG 50 VISCOSITY.
Event	11	Prime Pumps	Prime Pumps	2/4/2015	10:49:37	USER	8.33	2.0	362.0	2.0	FRESH WATER
Event	12	Test Lines	Test Lines	2/4/2015	10:51:44	USER					TESTED LINES TO 5713 PSI PRESSURE HOLDING
Event	13	Pump Spacer	Pump H2O Spacer	2/4/2015	10:56:37	USER	8.33	5.0	720.0	100.0	FRESH WATER
Event	14	Pump Cement	Pump Scavenger Cement	2/4/2015	11:17:47	USER	11.0	6.0	245.0	301.2	615 SKS AT 11.0 PPG, 2.75

											FT3/SK, 16.08 GAL/SK. WITH 75 LBS TUFF FIBER. BARREL COUNTER SHOWING LESS VOLUME DUE TO TUFF FIBER. CALCULATED OFF MIX WATER TO ENSURE RIGH AMMOUNT OF VOLUME WAS PUMPED.
Event	15	Pump Lead Cement	Pump Lead Cement	2/4/2015	12:05:44	USER	12.7	8.0	828.0	129.3	380 SKS AT 12.7 PPG, 1.91 FT3/SK, 10.07 GAL/SK
Event	16	Pump Tail Cement	Pump Tail Cement	2/4/2015	12:21:35	USER	13.5	8.0	310.0	299.2	960 SKS AT 13.5 PPG, 1.75 FT3/SK, 8.23 GAL/SK
Event	17	Shutdown	Shutdown	2/4/2015	13:00:13	USER					
Event	18	Clean Lines	Clean Lines	2/4/2015	13:01:08	USER	8.33	8.0	20.0	15.0	CLEANED LINES TO RESERVE PIT.
Event	19	Drop Top Plug	Drop Top Plug	2/4/2015	13:04:08	USER					PLUG LAUNCHED. PLUG SUPPLIED BY COMPANY REP.
Event	20	Pump Displacement	Pump Displacement	2/4/2015	13:04:29	USER	8.5	10.0	2840.0	194.6	FRESH WATER WITH 50 LBS KCL PER 10 BBLS. 1 GAL MMCR IN FIRST 10 BBLS AND 1 BAG BE-6 IN NEXT ENSUING 30 BBLS. GOOD CIRCULATION THROUGHOUT DISPLACEMENT,
Event	21	Slow Rate	Slow Rate	2/4/2015	13:23:19	USER	8.5	4.0	2197.0	184.6	SLOWED RATE 10 BBLS PRIOR TO CALCULATED DISPLACEMENT.
Event	22	Bump Plug	Bump Plug	2/4/2015	13:26:26	USER			3010.0		
Event	23	Check Floats	Check Floats	2/4/2015	13:30:53	USER					FLOATS HOLDING. HES RETURNED 2 BBLS H2O TO PUMP.
Event	24	End Job	End Job	2/4/2015	13:31:30	USER					PIPE WAS RECIPROCATED DURING JOB, GOOD CIRCULATION THROUGHOUT JOB. HES RETURNED 70 BBLS H2O

							SPACER TO SURFACE.
Event	25	Pre-Rig Down Safety Meeting	Pre-Rig Down Safety Meeting	2/4/2015	13:40:00	USER	WITH ALL HES PERSONNEL
Event	26	Rig-Down Equipment	Rig-Down Equipment	2/4/2015	13:50:00	USER	
Event	27	Pre-Convoy Safety Meeting	Pre-Convoy Safety Meeting	2/4/2015	15:50:00	USER	WITH ALL HES PERSONNEL
Event	28	Crew Leave Location	Crew Leave Location	2/4/2015	16:00:01	USER	
Event	29	Comment	Comment	2/4/2015	16:01:00	USER	THANK YOU FOR USING HALLIBURTON CEMENT DEPARTEMENT. JESSE SLAUGHTER AND CREW.

WPX ENERGY - FEDERAL RGU 543-26-198 - PRODUCTION



- | | | | | | | | | | |
|-----------------------------|---|-----------------------------|---------------|-------------------------|--------------------|----------------------|-----------------|--------------------------------|------------------------|
| ① Call Out | ④ Arrive At Loc | ⑦ Pre-Rig Up Safety Meeting | ⑩ Start Job | ⑬ Pump H2O Spacer | ⑯ Pump Tail Cement | ⑲ Drop Top Plug | 22 Bump Plug | 25 Pre-Rig Down Safety Meeting | 28 Crew Leave Location |
| ② Pre-Convoy Safety Meeting | ⑤ Assessment Of Location Safety Meeting | ⑧ Rig-Up Equipment | ⑪ Prime Pumps | ⑭ Pump Scavenger Cement | ⑰ Shutdown | 20 Pump Displacement | 23 Check Floats | 26 Rig-Down Equipment | 29 Comment |
| ③ Crew Leave Yard | ⑥ Spot Equipment | ⑨ Pre-Job Safety Meeting | ⑫ Test Lines | ⑮ Pump Lead Cement | ⑱ Clean Lines | 21 Slow Rate | 24 End Job | 27 Pre-Convoy Safety Meeting | |

▼ **HALLIBURTON** | iCem® Service

Created: 2015-02-04 14:00:14, Version: 3.0.121

Edit

Customer: WPX ENERGY ROCKY MOUNTAIN LLC-EBUS

Job Date: 2/4/2015 10:08:38 AM

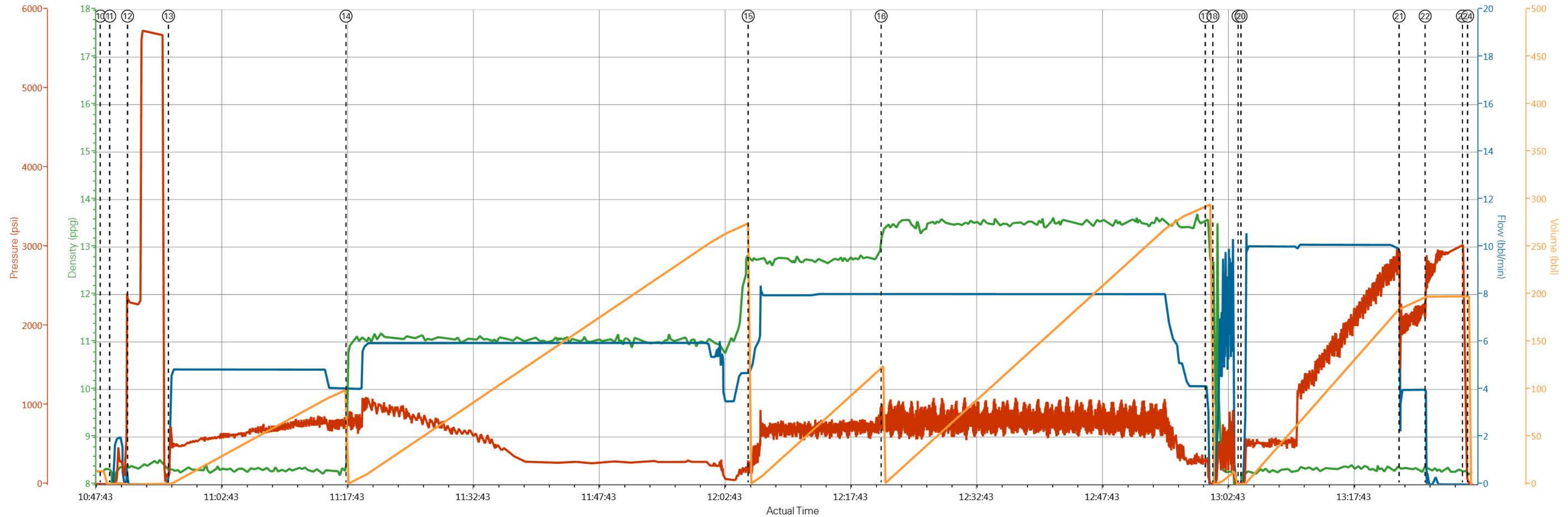
Well: FEDERAL RGU 543-26-198

Representative: RICK MORTIMER

Sales Order #: 0902074048

Elite #6: JESSE SLAUGHTER / ADAM ANDERSON

WPX ENERGY - FEDERAL RGU 543-26-198 - PRODUCTION



DH Density (ppg) Comb Pump Rate (bbl/min) PS Pump Press (psi) Pump Stg Tot (bbl)

HALLIBURTON

Water Analysis Report

Company: WILLIAMS PRODUCTION

Submitted by: JESSE SLAUGHTER

Attention: LAB

Lease FED. RGU

Well # 543-26-198

Date: 2/4/2015

Date Rec.:

S.O.# 902074048

Job Type: PRODUCTION

Specific Gravity	<i>MAX</i>	1
pH	<i>8</i>	7
Potassium (K)	<i>5000</i>	250 Mg / L
Calcium (Ca)	<i>500</i>	120 Mg / L
Iron (FE2)	<i>300</i>	0 Mg / L
Chlorides (Cl)	<i>3000</i>	0 Mg / L
Sulfates (SO ₄)	<i>1500</i>	UNDER 200 Mg / L
Chlorine (Cl ₂)		0 Mg / L
Temp	<i>40-80</i>	65 Deg
Total Dissolved Solids		260 Mg / L

Respectfully: JESSE SLAUGHTER

Title: CEMENTING SUPERVISOR

Location: Grand Junction, CO

NOTICE:

This report is limited to the described sample tested. Any person using or relying on this report agrees that Halliburton shall not be liable for any loss or damage whether due to act or omission resulting from such report or its