

Bayswater Exploration & Production, LLC

Well Name: **Carlson L-15-16HN**

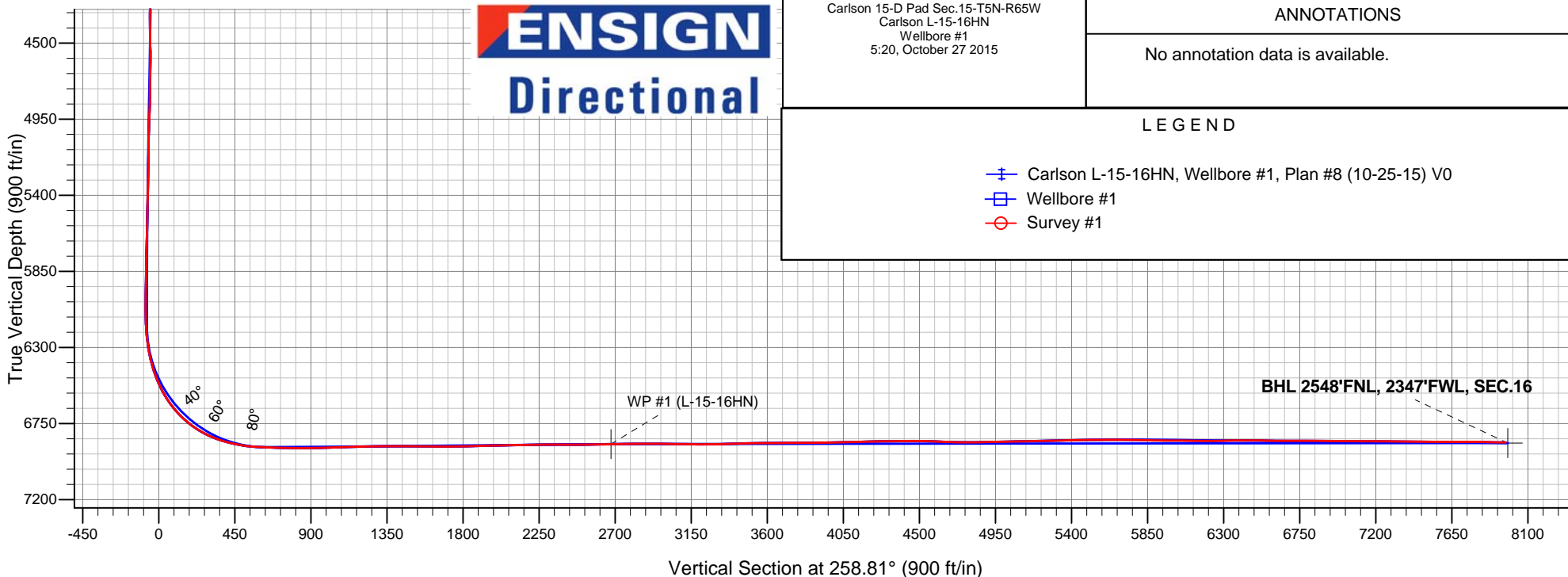
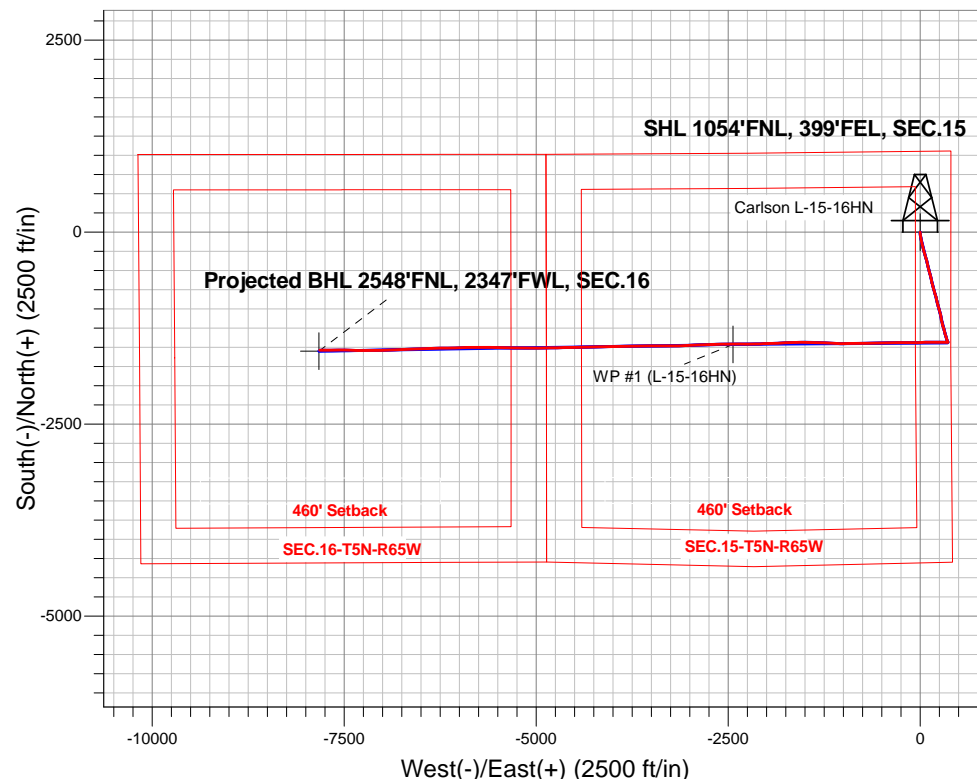
Surface Location: Carlson 15-D Pad Sec.15-T5N-R65W
North American Datum 1983 , US State Plane 1983 , Colorado Northern Zone

Ground Elevation: 4621.0

+N/-S	+E/-W	Northing	Easting	Latitude	Longitude	Slot
0.0	0.0	1391065.15	3239112.21	40.403698	-104.641400	
RKB - 22.5' WELL @ 4643.5ft (RKB - 22.5')						

FINAL SURVEY

Projected Bottom Hole Location
14985'MD 6862'TVD 1537'S & 7819'W of SHL
89 degree Incl @ 269.8 degree AZM





Bayswater Exploration & Production, LLC

SEC.15-T5N-R65W

Carlson 15-D Pad Sec.15-T5N-R65W

Carlson L-15-16HN

Wellbore #1

Survey: Survey #1

Standard Survey Report

27 October, 2015



BAYSWATER
EXPLORATION & PRODUCTION, LLC

Company:	Bayswater Exploration & Production, LLC	Local Co-ordinate Reference:	Well Carlson L-15-16HN
Project:	SEC.15-T5N-R65W	TVD Reference:	WELL @ 4643.5ft (RKB - 22.5')
Site:	Carlson 15-D Pad Sec.15-T5N-R65W	MD Reference:	WELL @ 4643.5ft (RKB - 22.5')
Well:	Carlson L-15-16HN	North Reference:	True
Wellbore:	Wellbore #1	Survey Calculation Method:	Minimum Curvature
Design:	Wellbore #1	Database:	EDMNEW

Project	SEC.15-T5N-R65W, Weld County, Colorado		
Map System:	US State Plane 1983	System Datum:	Mean Sea Level
Geo Datum:	North American Datum 1983		Using Well Reference Point
Map Zone:	Colorado Northern Zone		Using geodetic scale factor

Site	Carlson 15-D Pad Sec.15-T5N-R65W				
Site Position:		Northing:	1,391,065.25 ft	Latitude:	40.403695
From:	Lat/Long	Easting:	3,239,231.97 ft	Longitude:	-104.640970
Position Uncertainty:	0.0 ft	Slot Radius:	"	Grid Convergence:	0.56 °

Well	Carlson L-15-16HN					
Well Position	+N/-S	0.0 ft	Northing:	1,391,065.15 ft	Latitude:	40.403698
	+E/-W	0.0 ft	Easting:	3,239,112.21 ft	Longitude:	-104.641400
Position Uncertainty		0.0 ft	Wellhead Elevation:	ft	Ground Level:	4,621.0 ft

Wellbore	Wellbore #1				
Magnetics	Model Name	Sample Date	Declination (°)	Dip Angle (°)	Field Strength (nT)
	IGRF2010	10/22/2015	8.21	66.92	52,689

Design	Wellbore #1				
Audit Notes:					
Version:	1.0	Phase:	ACTUAL	Tie On Depth:	0.0
Vertical Section:	Depth From (TVD) (ft)	+N/-S (ft)	+E/-W (ft)	Direction (°)	
	6,865.0	0.0	0.0	258.81	

Survey Program	Date	10/27/2015			
From (ft)	To (ft)	Survey (Wellbore)	Tool Name	Description	
160.0	14,985.0	Survey #1 (Wellbore #1)	MWD	MWD - Standard	

Survey										
Measured Depth (ft)	Inclination (°)	Azimuth (°)	Vertical Depth (ft)	+N/-S (ft)	+E/-W (ft)	Vertical Section (ft)	Dogleg Rate (°/100ft)	Build Rate (°/100ft)	Turn Rate (°/100ft)	
0.0	0.00	0.00	0.0	0.0	0.0	0.0	0.00	0.00	0.00	
1.0	0.00	43.60	1.0	0.0	0.0	0.0	0.25	0.25	0.00	
SHL 1054'FNL, 399'FEL, SEC.15										
160.0	0.40	43.60	160.0	0.4	0.4	-0.5	0.25	0.25	0.00	
252.0	1.20	184.70	252.0	-0.3	0.5	-0.5	1.67	0.87	153.37	
344.0	2.50	178.70	343.9	-3.3	0.5	0.2	1.43	1.41	-6.52	
436.0	4.10	174.00	435.8	-8.6	0.9	0.8	1.76	1.74	-5.11	
528.0	6.50	180.80	527.4	-17.0	1.2	2.2	2.69	2.61	7.39	
620.0	8.00	177.50	618.7	-28.6	1.4	4.2	1.69	1.63	-3.59	
712.0	9.40	171.20	709.6	-42.5	2.8	5.5	1.84	1.52	-6.85	
805.0	10.10	164.90	801.3	-57.8	6.1	5.3	1.37	0.75	-6.77	
924.0	10.90	170.80	918.3	-79.0	10.6	4.9	1.13	0.67	4.96	
1,019.0	13.60	171.70	1,011.1	-99.0	13.6	5.8	2.85	2.84	0.95	

Company:	Bayswater Exploration & Production, LLC	Local Co-ordinate Reference:	Well Carlson L-15-16HN
Project:	SEC.15-T5N-R65W	TVD Reference:	WELL @ 4643.5ft (RKB - 22.5')
Site:	Carlson 15-D Pad Sec.15-T5N-R65W	MD Reference:	WELL @ 4643.5ft (RKB - 22.5')
Well:	Carlson L-15-16HN	North Reference:	True
Wellbore:	Wellbore #1	Survey Calculation Method:	Minimum Curvature
Design:	Wellbore #1	Database:	EDMNEW

Survey

Measured Depth (ft)	Inclination (°)	Azimuth (°)	Vertical Depth (ft)	+N/-S (ft)	+E/-W (ft)	Vertical Section (ft)	Dogleg Rate (°/100ft)	Build Rate (°/100ft)	Turn Rate (°/100ft)
1,114.0	14.90	170.10	1,103.2	-122.0	17.4	6.7	1.43	1.37	-1.68
1,206.0	16.40	167.00	1,191.8	-146.3	22.3	6.5	1.87	1.63	-3.37
1,298.0	16.40	166.10	1,280.0	-171.6	28.4	5.5	0.28	0.00	-0.98
1,391.0	16.40	165.50	1,369.2	-197.1	34.8	4.1	0.18	0.00	-0.65
1,483.0	15.30	163.80	1,457.7	-221.3	41.4	2.3	1.30	-1.20	-1.85
1,575.0	15.60	163.10	1,546.4	-244.8	48.4	0.0	0.38	0.33	-0.76
1,667.0	15.50	165.00	1,635.0	-268.5	55.2	-2.0	0.56	-0.11	2.07
1,759.0	15.80	165.90	1,723.6	-292.5	61.4	-3.5	0.42	0.33	0.98
1,851.0	17.10	163.30	1,811.9	-317.6	68.4	-5.4	1.62	1.41	-2.83
1,943.0	16.80	162.20	1,899.9	-343.2	76.3	-8.2	0.48	-0.33	-1.20
2,035.0	16.50	165.90	1,988.0	-368.6	83.6	-10.4	1.20	-0.33	4.02
2,127.0	17.50	166.60	2,076.0	-394.7	90.0	-11.6	1.11	1.09	0.76
2,219.0	17.30	167.10	2,163.8	-421.5	96.2	-12.6	0.27	-0.22	0.54
2,311.0	16.90	166.20	2,251.7	-447.8	102.5	-13.6	0.52	-0.43	-0.98
2,404.0	17.30	166.80	2,340.6	-474.4	108.8	-14.7	0.47	0.43	0.65
2,496.0	17.90	165.40	2,428.3	-501.4	115.5	-16.0	0.80	0.65	-1.52
2,591.0	16.40	162.90	2,519.1	-528.3	123.1	-18.2	1.76	-1.58	-2.63
2,686.0	18.30	166.10	2,609.7	-555.6	130.7	-20.3	2.24	2.00	3.37
2,781.0	19.40	168.00	2,699.6	-585.6	137.5	-21.3	1.33	1.16	2.00
2,876.0	19.30	166.10	2,789.3	-616.2	144.6	-22.2	0.67	-0.11	-2.00
2,972.0	17.40	168.20	2,880.4	-645.7	151.3	-23.1	2.10	-1.98	2.19
3,067.0	18.40	167.10	2,970.8	-674.2	157.6	-23.7	1.11	1.05	-1.16
3,162.0	16.50	164.50	3,061.4	-701.8	164.5	-25.2	2.16	-2.00	-2.74
3,257.0	14.60	162.70	3,152.9	-726.3	171.7	-27.5	2.06	-2.00	-1.89
3,352.0	14.70	165.00	3,244.9	-749.3	178.4	-29.5	0.62	0.11	2.42
3,447.0	14.90	163.40	3,336.7	-772.7	185.0	-31.5	0.48	0.21	-1.68
3,543.0	14.90	164.50	3,429.5	-796.4	191.8	-33.6	0.29	0.00	1.15
3,638.0	15.70	161.10	3,521.1	-820.3	199.3	-36.2	1.26	0.84	-3.58
3,733.0	15.60	165.40	3,612.6	-844.9	206.6	-38.7	1.23	-0.11	4.53
3,828.0	18.10	171.50	3,703.5	-871.8	212.0	-38.8	3.22	2.63	6.42
3,923.0	19.10	166.10	3,793.6	-901.5	218.0	-38.8	2.10	1.05	-5.68
4,018.0	20.20	165.90	3,883.0	-932.5	225.7	-40.4	1.16	1.16	-0.21
4,113.0	18.60	163.10	3,972.6	-962.9	234.1	-42.7	1.95	-1.68	-2.95
4,209.0	17.10	162.60	4,064.0	-991.0	242.8	-45.8	1.57	-1.56	-0.52
4,304.0	17.70	165.00	4,154.7	-1,018.3	250.7	-48.2	0.98	0.63	2.53
4,399.0	16.90	164.00	4,245.4	-1,045.5	258.2	-50.4	0.90	-0.84	-1.05
4,494.0	15.70	167.10	4,336.5	-1,071.3	264.9	-51.9	1.56	-1.26	3.26
4,589.0	16.40	172.00	4,427.8	-1,097.1	269.6	-51.5	1.60	0.74	5.16
4,685.0	17.90	171.50	4,519.6	-1,125.2	273.7	-50.1	1.57	1.56	-0.52
4,780.0	15.60	166.10	4,610.5	-1,152.0	278.9	-50.0	2.92	-2.42	-5.68
4,875.0	16.40	165.50	4,701.9	-1,177.4	285.3	-51.4	0.86	0.84	-0.63
4,970.0	16.30	170.10	4,793.0	-1,203.5	291.0	-51.8	1.37	-0.11	4.84
5,065.0	17.80	160.60	4,883.9	-1,230.3	298.1	-53.6	3.33	1.58	-10.00
5,160.0	18.20	161.90	4,974.2	-1,258.1	307.5	-57.5	0.60	0.42	1.37
5,256.0	16.70	166.20	5,065.8	-1,285.8	315.5	-59.9	2.06	-1.56	4.48
5,351.0	16.20	167.70	5,156.9	-1,312.0	321.6	-60.8	0.69	-0.53	1.58
5,446.0	11.90	163.60	5,249.0	-1,334.3	327.2	-61.9	4.64	-4.53	-4.32
5,541.0	11.00	162.40	5,342.2	-1,352.4	332.7	-63.8	0.98	-0.95	-1.26
5,636.0	10.30	165.20	5,435.5	-1,369.2	337.6	-65.4	0.92	-0.74	2.95
5,731.0	10.20	157.60	5,529.0	-1,385.2	343.0	-67.5	1.43	-0.11	-8.00
5,826.0	9.60	162.40	5,622.6	-1,400.5	348.6	-70.1	1.07	-0.63	5.05
5,921.0	7.40	158.00	5,716.5	-1,413.8	353.2	-72.1	2.41	-2.32	-4.63
6,016.0	5.30	157.80	5,811.0	-1,423.5	357.2	-74.1	2.21	-2.21	-0.21
6,112.0	4.00	150.80	5,906.6	-1,430.5	360.5	-76.0	1.48	-1.35	-7.29

Company:	Bayswater Exploration & Production, LLC	Local Co-ordinate Reference:	Well Carlson L-15-16HN
Project:	SEC.15-T5N-R65W	TVD Reference:	WELL @ 4643.5ft (RKB - 22.5')
Site:	Carlson 15-D Pad Sec.15-T5N-R65W	MD Reference:	WELL @ 4643.5ft (RKB - 22.5')
Well:	Carlson L-15-16HN	North Reference:	True
Wellbore:	Wellbore #1	Survey Calculation Method:	Minimum Curvature
Design:	Wellbore #1	Database:	EDMNEW

Survey									
Measured Depth (ft)	Inclination (°)	Azimuth (°)	Vertical Depth (ft)	+N/-S (ft)	+E/-W (ft)	Vertical Section (ft)	Dogleg Rate (°/100ft)	Build Rate (°/100ft)	Turn Rate (°/100ft)
6,207.0	1.70	159.70	6,001.5	-1,434.7	362.6	-77.2	2.46	-2.42	9.37
6,302.0	0.50	301.60	6,096.5	-1,435.9	362.7	-77.1	2.23	-1.26	149.37
6,397.0	3.60	271.00	6,191.4	-1,435.6	359.4	-73.9	3.35	3.26	-32.21
6,492.0	8.40	274.50	6,285.9	-1,435.0	349.5	-64.3	5.06	5.05	3.68
6,587.0	14.10	270.10	6,379.0	-1,434.4	331.0	-46.3	6.06	6.00	-4.63
6,683.0	20.90	269.80	6,470.5	-1,434.5	302.1	-18.0	7.08	7.08	-0.31
6,778.0	28.60	272.20	6,556.7	-1,433.6	262.4	20.9	8.17	8.11	2.53
6,873.0	37.10	271.20	6,636.5	-1,432.2	211.0	71.1	8.97	8.95	-1.05
6,968.0	45.50	268.40	6,707.8	-1,432.5	148.3	132.6	9.05	8.84	-2.95
7,016.0	50.30	267.30	6,740.0	-1,433.9	112.8	167.7	10.14	10.00	-2.29
7,063.0	54.80	267.50	6,768.5	-1,435.6	75.5	204.6	9.58	9.57	0.43
7,111.0	59.60	268.40	6,794.5	-1,437.0	35.2	244.4	10.12	10.00	1.88
7,158.0	64.20	267.50	6,816.7	-1,438.5	-6.2	285.4	9.93	9.79	-1.91
7,206.0	69.40	268.60	6,835.6	-1,440.0	-50.3	328.9	11.04	10.83	2.29
7,253.0	73.90	270.80	6,850.3	-1,440.2	-94.9	372.7	10.55	9.57	4.68
7,301.0	76.20	270.80	6,862.7	-1,439.5	-141.3	418.0	4.79	4.79	0.00
7,348.0	78.20	270.00	6,873.1	-1,439.2	-187.1	462.9	4.57	4.26	-1.70
7,396.0	81.70	270.00	6,881.5	-1,439.2	-234.4	509.3	7.29	7.29	0.00
7,443.0	85.50	270.00	6,886.8	-1,439.2	-281.1	555.1	8.09	8.09	0.00
7,478.0	87.10	270.50	6,889.0	-1,439.1	-316.0	589.3	4.79	4.57	1.43
7,515.0	88.40	269.60	6,890.5	-1,439.0	-353.0	625.6	4.27	3.51	-2.43
7,611.0	87.90	268.10	6,893.6	-1,441.0	-448.9	720.1	1.65	-0.52	-1.56
7,706.0	89.50	268.60	6,895.7	-1,443.7	-543.8	813.7	1.76	1.68	0.53
7,802.0	91.60	269.10	6,894.8	-1,445.6	-639.8	908.2	2.25	2.19	0.52
7,897.0	91.20	268.80	6,892.5	-1,447.4	-734.7	1,001.7	0.53	-0.42	-0.32
7,992.0	92.40	269.80	6,889.5	-1,448.5	-829.7	1,095.1	1.64	1.26	1.05
8,087.0	90.70	268.80	6,886.9	-1,449.7	-924.6	1,188.5	2.08	-1.79	-1.05
8,183.0	91.00	268.60	6,885.5	-1,451.9	-1,020.6	1,283.0	0.38	0.31	-0.21
8,278.0	90.20	272.10	6,884.5	-1,451.3	-1,115.6	1,376.1	3.78	-0.84	3.68
8,372.0	90.00	274.70	6,884.3	-1,445.7	-1,209.4	1,467.0	2.77	-0.21	2.77
8,467.0	89.20	274.20	6,885.0	-1,438.3	-1,304.1	1,558.5	0.99	-0.84	-0.53
8,563.0	89.70	270.90	6,885.9	-1,434.1	-1,400.0	1,651.8	3.48	0.52	-3.44
8,654.0	90.50	268.40	6,885.8	-1,434.6	-1,491.0	1,741.1	2.88	0.88	-2.75
8,746.0	91.10	268.10	6,884.5	-1,437.4	-1,582.9	1,831.9	0.73	0.65	-0.33
8,838.0	91.90	268.40	6,882.1	-1,440.2	-1,674.9	1,922.6	0.93	0.87	0.33
8,929.0	91.40	267.70	6,879.5	-1,443.3	-1,765.8	2,012.4	0.95	-0.55	-0.77
9,021.0	90.80	268.10	6,877.7	-1,446.7	-1,857.7	2,103.2	0.78	-0.65	0.43
9,113.0	91.10	267.90	6,876.2	-1,449.9	-1,949.6	2,194.0	0.39	0.33	-0.22
9,205.0	90.70	268.20	6,874.7	-1,453.1	-2,041.6	2,284.8	0.54	-0.43	0.33
9,297.0	89.50	269.30	6,874.6	-1,455.1	-2,133.5	2,375.4	1.77	-1.30	1.20
9,388.0	89.30	268.80	6,875.5	-1,456.6	-2,224.5	2,465.0	0.59	-0.22	-0.55
9,480.0	91.60	270.20	6,874.8	-1,457.4	-2,316.5	2,555.3	2.93	2.50	1.52
9,572.0	91.60	269.80	6,872.2	-1,457.4	-2,408.5	2,645.6	0.43	0.00	-0.43
9,601.4	91.22	269.70	6,871.5	-1,457.5	-2,437.8	2,674.4	1.34	-1.30	-0.33
WP #1 (L-15-16HN)									
9,664.0	90.40	269.50	6,870.6	-1,457.9	-2,500.5	2,735.9	1.34	-1.30	-0.33
9,756.0	90.00	268.90	6,870.3	-1,459.2	-2,592.4	2,826.4	0.78	-0.43	-0.65
9,847.0	90.00	269.10	6,870.3	-1,460.8	-2,683.4	2,916.0	0.22	0.00	0.22
9,939.0	89.00	267.50	6,871.1	-1,463.5	-2,775.4	3,006.7	2.05	-1.09	-1.74
10,031.0	90.20	268.20	6,871.7	-1,467.0	-2,867.3	3,097.5	1.51	1.30	0.76
10,122.0	88.50	265.80	6,872.8	-1,471.7	-2,958.2	3,187.6	3.23	-1.87	-2.64
10,214.0	90.80	267.70	6,873.3	-1,477.0	-3,050.0	3,278.7	3.24	2.50	2.07
10,306.0	92.20	268.90	6,870.9	-1,479.7	-3,141.9	3,369.4	2.00	1.52	1.30
10,398.0	91.90	270.90	6,867.6	-1,479.9	-3,233.9	3,459.6	2.20	-0.33	2.17

Company:	Bayswater Exploration & Production, LLC	Local Co-ordinate Reference:	Well Carlson L-15-16HN
Project:	SEC.15-T5N-R65W	TVD Reference:	WELL @ 4643.5ft (RKB - 22.5')
Site:	Carlson 15-D Pad Sec.15-T5N-R65W	MD Reference:	WELL @ 4643.5ft (RKB - 22.5')
Well:	Carlson L-15-16HN	North Reference:	True
Wellbore:	Wellbore #1	Survey Calculation Method:	Minimum Curvature
Design:	Wellbore #1	Database:	EDMNEW

Survey

Measured Depth (ft)	Inclination (°)	Azimuth (°)	Vertical Depth (ft)	+N/-S (ft)	+E/-W (ft)	Vertical Section (ft)	Dogleg Rate (°/100ft)	Build Rate (°/100ft)	Turn Rate (°/100ft)
10,490.0	90.20	269.50	6,865.9	-1,479.5	-3,325.9	3,549.8	2.39	-1.85	-1.52
10,582.0	90.30	269.60	6,865.5	-1,480.3	-3,417.8	3,640.2	0.15	0.11	0.11
10,673.0	90.50	269.50	6,864.9	-1,481.0	-3,508.8	3,729.6	0.25	0.22	-0.11
10,765.0	90.00	269.10	6,864.5	-1,482.1	-3,600.8	3,820.0	0.70	-0.54	-0.43
10,857.0	91.00	269.50	6,863.7	-1,483.2	-3,692.8	3,910.5	1.17	1.09	0.43
10,949.0	91.20	268.80	6,861.9	-1,484.6	-3,784.8	4,001.0	0.79	0.22	-0.76
11,041.0	91.40	268.90	6,859.9	-1,486.4	-3,876.8	4,091.6	0.24	0.22	0.11
11,133.0	91.50	268.90	6,857.5	-1,488.2	-3,968.7	4,182.1	0.11	0.11	0.00
11,225.0	90.60	268.80	6,855.8	-1,490.0	-4,060.7	4,272.7	0.98	-0.98	-0.11
11,317.0	91.20	269.10	6,854.4	-1,491.7	-4,152.6	4,363.2	0.73	0.65	0.33
11,412.0	90.00	268.60	6,853.4	-1,493.6	-4,247.6	4,456.8	1.37	-1.26	-0.53
11,507.0	88.20	267.70	6,854.9	-1,496.7	-4,342.6	4,550.5	2.12	-1.89	-0.95
11,602.0	87.70	268.90	6,858.3	-1,499.5	-4,437.4	4,644.1	1.37	-0.53	1.26
11,697.0	89.40	268.40	6,860.7	-1,501.8	-4,532.4	4,737.7	1.87	1.79	-0.53
11,792.0	90.40	269.80	6,860.9	-1,503.2	-4,627.4	4,831.2	1.81	1.05	1.47
11,888.0	91.50	269.30	6,859.3	-1,504.0	-4,723.4	4,925.5	1.26	1.15	-0.52
11,983.0	91.10	268.60	6,857.1	-1,505.7	-4,818.3	5,018.9	0.85	-0.42	-0.74
12,078.0	91.20	269.80	6,855.2	-1,507.1	-4,913.3	5,112.4	1.27	0.11	1.26
12,173.0	91.50	269.10	6,853.0	-1,508.0	-5,008.3	5,205.7	0.80	0.32	-0.74
12,269.0	91.30	270.00	6,850.6	-1,508.7	-5,104.2	5,300.0	0.96	-0.21	0.94
12,364.0	90.60	271.20	6,849.0	-1,507.7	-5,199.2	5,393.0	1.46	-0.74	1.26
12,459.0	90.90	270.90	6,847.8	-1,506.0	-5,294.2	5,485.8	0.45	0.32	-0.32
12,554.0	90.90	271.00	6,846.3	-1,504.4	-5,389.1	5,578.7	0.11	0.00	0.11
12,649.0	89.30	270.50	6,846.1	-1,503.2	-5,484.1	5,671.6	1.76	-1.68	-0.53
12,744.0	89.20	271.20	6,847.4	-1,501.8	-5,579.1	5,764.5	0.74	-0.11	0.74
12,840.0	88.40	270.50	6,849.4	-1,500.3	-5,675.1	5,858.4	1.11	-0.83	-0.73
12,935.0	90.00	269.10	6,850.7	-1,500.7	-5,770.1	5,951.6	2.24	1.68	-1.47
13,030.0	89.20	268.10	6,851.4	-1,503.0	-5,865.0	6,045.2	1.35	-0.84	-1.05
13,125.0	89.70	268.80	6,852.3	-1,505.6	-5,960.0	6,138.9	0.91	0.53	0.74
13,221.0	90.10	269.10	6,852.5	-1,507.3	-6,056.0	6,233.4	0.52	0.42	0.31
13,316.0	91.40	269.50	6,851.2	-1,508.5	-6,151.0	6,326.8	1.43	1.37	0.42
13,411.0	90.00	268.60	6,850.1	-1,510.1	-6,245.9	6,420.3	1.75	-1.47	-0.95
13,506.0	89.40	268.60	6,850.6	-1,512.4	-6,340.9	6,513.9	0.63	-0.63	0.00
13,601.0	89.20	267.70	6,851.7	-1,515.4	-6,435.9	6,607.6	0.97	-0.21	-0.95
13,696.0	90.40	267.40	6,852.1	-1,519.5	-6,530.8	6,701.5	1.30	1.26	-0.32
13,791.0	89.80	267.20	6,851.9	-1,524.0	-6,625.7	6,795.5	0.67	-0.63	-0.21
13,886.0	89.10	267.70	6,852.8	-1,528.2	-6,720.6	6,889.4	0.91	-0.74	0.53
13,981.0	89.50	266.50	6,854.0	-1,533.0	-6,815.4	6,983.4	1.33	0.42	-1.26
14,076.0	89.70	268.20	6,854.6	-1,537.4	-6,910.3	7,077.3	1.80	0.21	1.79
14,171.0	89.20	268.60	6,855.5	-1,540.1	-7,005.3	7,171.0	0.67	-0.53	0.42
14,266.0	90.50	270.20	6,855.8	-1,541.1	-7,100.3	7,264.4	2.17	1.37	1.68
14,361.0	88.50	271.00	6,856.6	-1,540.1	-7,195.3	7,357.3	2.27	-2.11	0.84
14,456.0	89.30	270.90	6,858.4	-1,538.5	-7,290.2	7,450.2	0.85	0.84	-0.11
14,552.0	90.70	271.40	6,858.4	-1,536.6	-7,386.2	7,544.0	1.55	1.46	0.52
14,647.0	89.40	270.00	6,858.4	-1,535.4	-7,481.2	7,636.9	2.01	-1.37	-1.47
14,742.0	90.70	269.50	6,858.3	-1,535.8	-7,576.2	7,730.2	1.47	1.37	-0.53
14,838.0	88.40	269.50	6,859.0	-1,536.6	-7,672.2	7,824.5	2.40	-2.40	0.00
14,920.0	89.00	269.80	6,860.9	-1,537.1	-7,754.1	7,905.0	0.82	0.73	0.37
14,985.0	89.00	269.80	6,862.0	-1,537.4	-7,819.1	7,968.8	0.00	0.00	0.00

BHL 2560'FNL, 2337'FWL, SEC.16

Company:	Bayswater Exploration & Production, LLC	Local Co-ordinate Reference:	Well Carlson L-15-16HN
Project:	SEC.15-T5N-R65W	TVD Reference:	WELL @ 4643.5ft (RKB - 22.5')
Site:	Carlson 15-D Pad Sec.15-T5N-R65W	MD Reference:	WELL @ 4643.5ft (RKB - 22.5')
Well:	Carlson L-15-16HN	North Reference:	True
Wellbore:	Wellbore #1	Survey Calculation Method:	Minimum Curvature
Design:	Wellbore #1	Database:	EDMNEW

Design Targets

Target Name - hit/miss target - Shape	Dip Angle (°)	Dip Dir. (°)	TVD (ft)	+N/-S (ft)	+E/-W (ft)	Northing (ft)	Easting (ft)	Latitude	Longitude
SHL 1054'FNL, 399'FI - survey hits target center - Point	0.00	0.00	1.0	0.0	0.0	1,391,065.18	3,239,112.21	40.403698	-104.641400
BHL 2560'FNL, 2337'I - survey misses target center by 15.9ft at 14985.0ft MD (6862.0 TVD, -1537.4 N, -7819.1 E) - Point	0.00	0.00	6,865.0	-1,549.2	-7,829.3	1,389,440.24	3,231,298.59	40.399442	-104.669510
WP #1 (L-15-16HN) - survey misses target center by 5.0ft at 9601.3ft MD (6871.5 TVD, -1457.5 N, -2437.8 E) - Point	0.00	0.00	6,872.0	-1,462.5	-2,437.8	1,389,579.18	3,236,688.79	40.399683	-104.650153

Checked By: _____ Approved By: _____ Date: _____