

# Bayswater Exploration & Production, LLC

Well Name: **Carlson D-15-16HN**

Surface Location: Carlson 15-D Pad Sec.15-T5N-R65W

North American Datum 1983 , US State Plane 1983 , Colorado Northern Zone

Ground Elevation: 4621.0

+N/-S	+E/-W	Northing	Easting	Latitude	Longitude	Slot
0.0	0.0	1391065.23	3239231.97	40.403695	-104.640970	

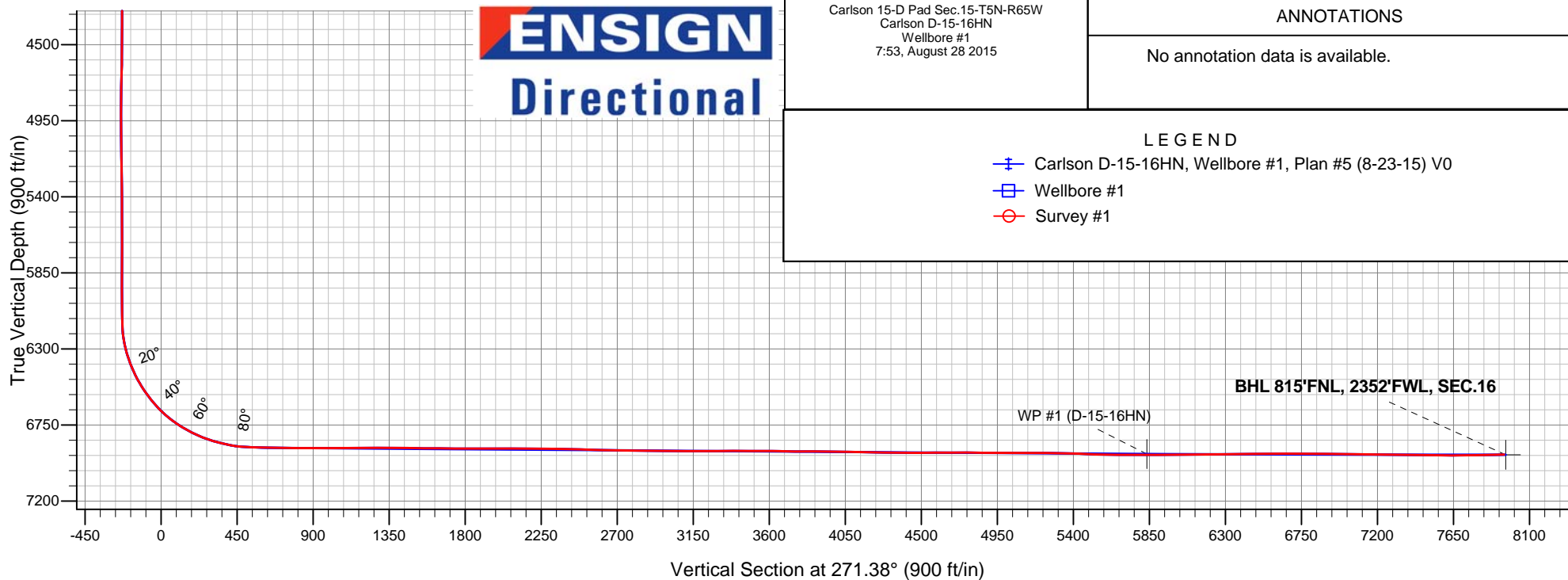
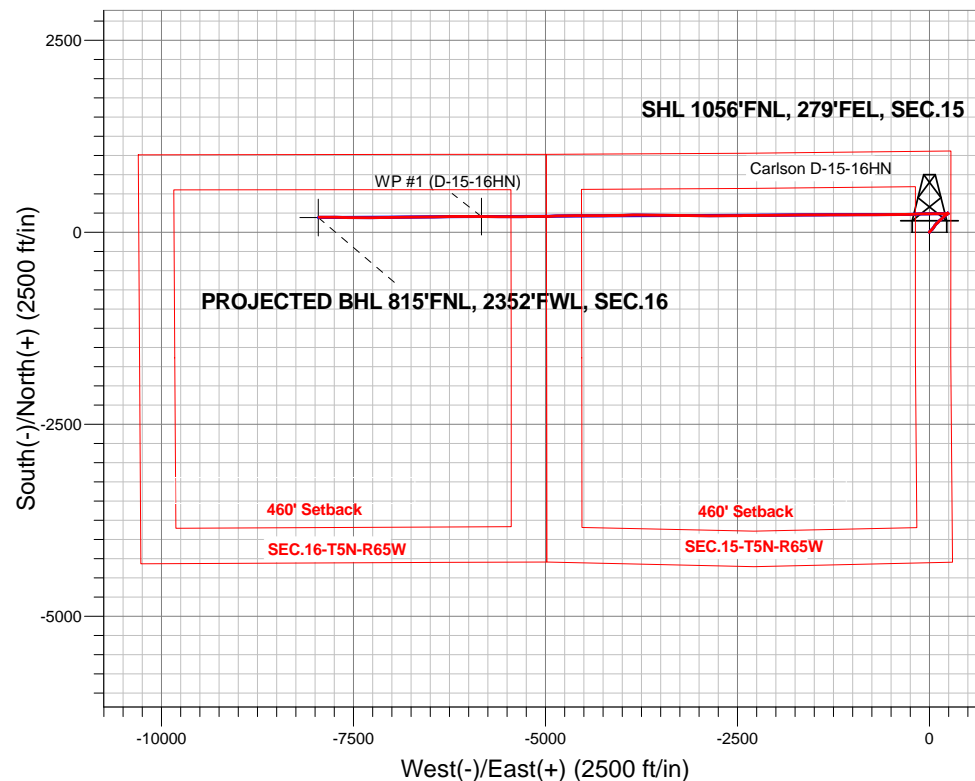
RKB - 22.5' WELL @ 4643.5ft (RKB - 22.5')

## FINAL SURVEY

## Projected Bottom Hole Location

**14760'MD 6925'TVD 198'N & 7947'W of SHL**

**91.5 degree Incl @ 270.9 degree AZM**





# **Bayswater Exploration & Production, LLC**

**SEC.15-T5N-R65W**

**Carlson 15-D Pad Sec.15-T5N-R65W**

**Carlson D-15-16HN**

**Wellbore #1**

**Survey: Survey #1**

## **Standard Survey Report**

**28 August, 2015**



**BAYSWATER**  
**EXPLORATION & PRODUCTION, LLC**

<b>Company:</b>	Bayswater Exploration & Production, LLC	<b>Local Co-ordinate Reference:</b>	Well Carlson D-15-16HN
<b>Project:</b>	SEC.15-T5N-R65W	<b>TVD Reference:</b>	WELL @ 4643.5ft (RKB - 22.5')
<b>Site:</b>	Carlson 15-D Pad Sec.15-T5N-R65W	<b>MD Reference:</b>	WELL @ 4643.5ft (RKB - 22.5')
<b>Well:</b>	Carlson D-15-16HN	<b>North Reference:</b>	True
<b>Wellbore:</b>	Wellbore #1	<b>Survey Calculation Method:</b>	Minimum Curvature
<b>Design:</b>	Wellbore #1	<b>Database:</b>	EDMNEW

<b>Project</b>	SEC.15-T5N-R65W, Weld County, Colorado		
<b>Map System:</b>	US State Plane 1983	<b>System Datum:</b>	Mean Sea Level
<b>Geo Datum:</b>	North American Datum 1983		Using Well Reference Point
<b>Map Zone:</b>	Colorado Northern Zone		Using geodetic scale factor

Site	Carlson 15-D Pad Sec.15-T5N-R65W				
Site Position:		Northing:	1,391,065.25 ft	Latitude:	40.403695
From:	Lat/Long	Easting:	3,239,231.97 ft	Longitude:	-104.640970
Position Uncertainty:	0.0 ft	Slot Radius:	"	Grid Convergence:	0.56 °

Well	Carlson D-15-16HN					
Well Position	+N/-S	0.0 ft	Northing:	1,391,065.23 ft	Latitude:	40.403695
	+E/-W	0.0 ft	Easting:	3,239,231.97 ft	Longitude:	-104.640970
Position Uncertainty		0.0 ft	Wellhead Elevation:	ft	Ground Level:	4,621.0 ft

<b>Wellbore</b>	Wellbore #1				
<b>Magnetics</b>	<b>Model Name</b>	<b>Sample Date</b>	<b>Declination (°)</b>	<b>Dip Angle (°)</b>	<b>Field Strength (nT)</b>
	IGRF2010	7/29/2015	8.24	66.93	52,714

<b>Design</b>	Wellbore #1				
<b>Audit Notes:</b>					
<b>Version:</b>	1.0	<b>Phase:</b>	ACTUAL	<b>Tie On Depth:</b>	0.0
<b>Vertical Section:</b>	<b>Depth From (TVD) (ft)</b>	<b>+N/-S (ft)</b>	<b>+E/-W (ft)</b>	<b>Direction (°)</b>	
	0.0	0.0	0.0	271.38	

<b>Survey Program</b>	<b>Date</b>	8/28/2015			
<b>From (ft)</b>	<b>To (ft)</b>	<b>Survey (Wellbore)</b>	<b>Tool Name</b>	<b>Description</b>	
160.0	14,760.0	Survey #1 (Wellbore #1)	MWD	MWD - Standard	

<b>Survey</b>										
<b>Measured Depth (ft)</b>	<b>Inclination (°)</b>	<b>Azimuth (°)</b>	<b>Vertical Depth (ft)</b>	<b>+N/-S (ft)</b>	<b>+E/-W (ft)</b>	<b>Vertical Section (ft)</b>	<b>Dogleg Rate (°/100ft)</b>	<b>Build Rate (°/100ft)</b>	<b>Turn Rate (°/100ft)</b>	
0.0	0.00	0.00	0.0	0.0	0.0	0.0	0.00	0.00	0.00	
1.0	0.00	239.40	1.0	0.0	0.0	0.0	0.50	0.50	0.00	
<b>SHL 1056'FNL, 279'FEL, SEC.15</b>										
160.0	0.80	239.40	160.0	-0.6	-1.0	0.9	0.50	0.50	0.00	
253.0	0.40	275.40	253.0	-0.9	-1.8	1.8	0.57	-0.43	38.71	
345.0	0.20	50.10	345.0	-0.7	-2.0	2.0	0.61	-0.22	146.41	
437.0	0.40	28.50	437.0	-0.4	-1.8	1.8	0.25	0.22	-23.48	
529.0	0.40	316.20	529.0	0.2	-1.8	1.8	0.51	0.00	-78.59	
621.0	0.70	14.60	621.0	0.9	-1.9	1.9	0.65	0.33	63.48	
713.0	0.80	22.00	713.0	2.1	-1.5	1.6	0.15	0.11	8.04	
795.0	1.10	43.20	795.0	3.2	-0.8	0.9	0.56	0.37	25.85	
1,022.0	2.50	54.30	1,021.8	7.7	4.7	-4.5	0.63	0.62	4.89	
1,117.0	3.90	34.30	1,116.7	11.5	8.2	-8.0	1.86	1.47	-21.05	

<b>Company:</b>	Bayswater Exploration & Production, LLC	<b>Local Co-ordinate Reference:</b>	Well Carlson D-15-16HN
<b>Project:</b>	SEC.15-T5N-R65W	<b>TVD Reference:</b>	WELL @ 4643.5ft (RKB - 22.5')
<b>Site:</b>	Carlson 15-D Pad Sec.15-T5N-R65W	<b>MD Reference:</b>	WELL @ 4643.5ft (RKB - 22.5')
<b>Well:</b>	Carlson D-15-16HN	<b>North Reference:</b>	True
<b>Wellbore:</b>	Wellbore #1	<b>Survey Calculation Method:</b>	Minimum Curvature
<b>Design:</b>	Wellbore #1	<b>Database:</b>	EDMNEW

Survey

Measured Depth (ft)	Inclination (°)	Azimuth (°)	Vertical Depth (ft)	+N/-S (ft)	+E/-W (ft)	Vertical Section (ft)	Dogleg Rate (°/100ft)	Build Rate (°/100ft)	Turn Rate (°/100ft)
1,209.0	5.60	44.80	1,208.4	17.3	13.2	-12.7	2.07	1.85	11.41
1,302.0	7.70	47.80	1,300.8	24.7	21.0	-20.4	2.29	2.26	3.23
1,394.0	7.40	46.60	1,392.0	32.9	29.8	-29.0	0.37	-0.33	-1.30
1,486.0	6.50	40.20	1,483.3	41.0	37.5	-36.5	1.29	-0.98	-6.96
1,578.0	7.60	38.50	1,574.6	49.7	44.7	-43.5	1.22	1.20	-1.85
1,670.0	6.80	32.30	1,665.9	59.1	51.4	-49.9	1.21	-0.87	-6.74
1,762.0	7.60	39.20	1,757.1	68.4	58.1	-56.4	1.28	0.87	7.50
1,855.0	6.40	26.70	1,849.4	77.8	64.3	-62.4	2.08	-1.29	-13.44
1,947.0	7.00	33.70	1,940.8	87.0	69.7	-67.6	1.10	0.65	7.61
2,039.0	7.80	37.60	2,032.0	96.6	76.7	-74.3	1.03	0.87	4.24
2,131.0	7.70	43.00	2,123.2	106.1	84.7	-82.1	0.80	-0.11	5.87
2,223.0	6.90	51.10	2,214.5	114.1	93.2	-90.4	1.41	-0.87	8.80
2,315.0	8.30	49.20	2,305.7	121.9	102.5	-99.5	1.55	1.52	-2.07
2,407.0	7.50	42.70	2,396.8	130.6	111.6	-108.4	1.30	-0.87	-7.07
2,499.0	8.60	46.00	2,487.9	139.8	120.6	-117.2	1.30	1.20	3.59
2,594.0	8.40	48.00	2,581.8	149.4	130.9	-127.3	0.38	-0.21	2.11
2,690.0	8.90	46.60	2,676.7	159.2	141.5	-137.6	0.57	0.52	-1.46
2,785.0	9.10	42.70	2,770.6	169.8	151.9	-147.8	0.68	0.21	-4.11
2,880.0	8.40	51.50	2,864.5	179.6	162.5	-158.1	1.59	-0.74	9.26
2,975.0	8.30	47.80	2,958.5	188.5	173.0	-168.4	0.58	-0.11	-3.89
3,071.0	7.80	46.00	3,053.5	197.7	182.8	-178.0	0.58	-0.52	-1.88
3,166.0	6.70	46.40	3,147.8	206.0	191.4	-186.4	1.16	-1.16	0.42
3,261.0	8.10	53.10	3,242.0	213.9	200.8	-195.6	1.73	1.47	7.05
3,356.0	6.60	54.80	3,336.2	221.0	210.6	-205.2	1.60	-1.58	1.79
3,452.0	6.20	48.50	3,431.6	227.6	219.0	-213.5	0.84	-0.42	-6.56
3,547.0	4.40	48.50	3,526.2	233.5	225.6	-219.9	1.89	-1.89	0.00
3,642.0	3.30	47.80	3,621.0	237.7	230.3	-224.5	1.16	-1.16	-0.74
3,737.0	3.20	48.80	3,715.8	241.3	234.4	-228.5	0.12	-0.11	1.05
3,832.0	2.30	28.60	3,810.7	244.7	237.3	-231.3	1.38	-0.95	-21.26
3,928.0	1.20	354.90	3,906.7	247.4	238.1	-232.1	1.52	-1.15	-35.10
4,023.0	0.90	234.50	4,001.6	248.0	237.4	-231.4	1.92	-0.32	-126.74
4,118.0	0.40	200.50	4,096.6	247.2	236.7	-230.6	0.64	-0.53	-35.79
4,213.0	0.40	159.60	4,191.6	246.6	236.7	-230.7	0.29	0.00	-43.05
4,308.0	0.10	208.60	4,286.6	246.2	236.8	-230.7	0.36	-0.32	51.58
4,404.0	0.10	31.10	4,382.6	246.2	236.8	-230.7	0.21	0.00	-184.90
4,499.0	0.40	97.40	4,477.6	246.2	237.1	-231.1	0.39	0.32	69.79
4,594.0	0.70	124.30	4,572.6	245.9	237.9	-231.9	0.41	0.32	28.32
4,689.0	1.90	116.90	4,667.6	244.8	239.8	-233.8	1.27	1.26	-7.79
4,784.0	2.10	159.90	4,762.6	242.5	241.8	-235.9	1.56	0.21	45.26
4,879.0	0.30	54.10	4,857.5	241.0	242.6	-236.7	2.32	-1.89	-111.37
4,974.0	0.30	62.60	4,952.5	241.3	243.1	-237.2	0.05	0.00	8.95
5,069.0	1.40	310.90	5,047.5	242.1	242.4	-236.5	1.62	1.16	-117.58
5,164.0	1.00	296.20	5,142.5	243.3	240.8	-234.8	0.53	-0.42	-15.47
5,259.0	1.00	305.80	5,237.5	244.1	239.4	-233.4	0.18	0.00	10.11
5,354.0	0.60	315.90	5,332.5	245.0	238.3	-232.4	0.44	-0.42	10.63
5,450.0	0.40	304.40	5,428.5	245.5	237.7	-231.7	0.23	-0.21	-11.98
5,545.0	0.20	286.20	5,523.5	245.7	237.3	-231.3	0.23	-0.21	-19.16
5,640.0	0.20	239.20	5,618.5	245.7	237.0	-231.0	0.17	0.00	-49.47
5,735.0	0.40	177.90	5,713.5	245.3	236.8	-230.9	0.37	0.21	-64.53
5,830.0	0.40	133.20	5,808.5	244.7	237.1	-231.1	0.32	0.00	-47.05
5,926.0	0.60	133.60	5,904.5	244.1	237.7	-231.7	0.21	0.21	0.42
6,021.0	1.10	230.60	5,999.5	243.2	237.4	-231.4	1.38	0.53	102.11
6,116.0	0.70	210.00	6,094.4	242.1	236.4	-230.5	0.54	-0.42	-21.68
6,164.0	1.20	242.90	6,142.4	241.7	235.8	-229.9	1.50	1.04	68.54

<b>Company:</b>	Bayswater Exploration & Production, LLC	<b>Local Co-ordinate Reference:</b>	Well Carlson D-15-16HN
<b>Project:</b>	SEC.15-T5N-R65W	<b>TVD Reference:</b>	WELL @ 4643.5ft (RKB - 22.5')
<b>Site:</b>	Carlson 15-D Pad Sec.15-T5N-R65W	<b>MD Reference:</b>	WELL @ 4643.5ft (RKB - 22.5')
<b>Well:</b>	Carlson D-15-16HN	<b>North Reference:</b>	True
<b>Wellbore:</b>	Wellbore #1	<b>Survey Calculation Method:</b>	Minimum Curvature
<b>Design:</b>	Wellbore #1	<b>Database:</b>	EDMNEW

## Survey

Measured Depth (ft)	Inclination (°)	Azimuth (°)	Vertical Depth (ft)	+N/-S (ft)	+E/-W (ft)	Vertical Section (ft)	Dogleg Rate (°/100ft)	Build Rate (°/100ft)	Turn Rate (°/100ft)
6,211.0	4.30	280.00	6,189.4	241.7	233.6	-227.7	7.28	6.60	78.94
6,259.0	8.90	279.30	6,237.0	242.7	228.2	-222.2	9.58	9.58	-1.46
6,307.0	12.50	272.60	6,284.2	243.5	219.3	-213.4	7.92	7.50	-13.96
6,355.0	16.90	263.80	6,330.6	243.0	207.2	-201.2	10.25	9.17	-18.33
6,402.0	20.50	268.20	6,375.1	242.0	192.2	-186.3	8.22	7.66	9.36
6,450.0	23.50	269.50	6,419.6	241.6	174.2	-168.3	6.33	6.25	2.71
6,497.0	26.60	269.60	6,462.2	241.5	154.3	-148.4	6.60	6.60	0.21
6,545.0	30.30	270.00	6,504.4	241.4	131.4	-125.5	7.72	7.71	0.83
6,592.0	34.20	269.30	6,544.2	241.2	106.3	-100.5	8.34	8.30	-1.49
6,640.0	37.00	269.60	6,583.2	241.0	78.4	-72.6	5.84	5.83	0.63
6,688.0	40.10	271.70	6,620.7	241.3	48.5	-42.7	7.01	6.46	4.38
6,736.0	44.10	268.70	6,656.3	241.4	16.3	-10.5	9.33	8.33	-6.25
6,783.0	49.30	267.70	6,688.6	240.3	-17.8	23.6	11.17	11.06	-2.13
6,831.0	52.80	269.10	6,718.7	239.3	-55.1	60.9	7.64	7.29	2.92
6,878.0	56.10	269.50	6,746.0	238.8	-93.4	99.1	7.06	7.02	0.85
6,926.0	59.80	267.70	6,771.5	237.8	-134.0	139.7	8.34	7.71	-3.75
6,973.0	63.10	268.00	6,794.0	236.3	-175.3	180.9	7.04	7.02	0.64
7,021.0	66.30	268.20	6,814.5	234.8	-218.7	224.3	6.68	6.67	0.42
7,068.0	70.60	269.30	6,831.7	233.9	-262.4	267.9	9.40	9.15	2.34
7,116.0	74.00	268.60	6,846.3	233.0	-308.1	313.6	7.22	7.08	-1.46
7,163.0	76.40	268.00	6,858.3	231.7	-353.5	359.0	5.25	5.11	-1.28
7,211.0	78.30	268.40	6,868.9	230.2	-400.3	405.7	4.04	3.96	0.83
7,265.0	84.20	270.50	6,877.1	229.7	-453.6	459.0	11.58	10.93	3.89
7,293.9	86.19	270.70	6,879.5	230.0	-482.4	487.8	6.93	6.90	0.69
<b>LPL 820°FNL &amp; 762°FEL, SEC.15</b>									
7,323.0	88.20	270.90	6,880.9	230.4	-511.5	516.9	6.93	6.90	0.69
7,417.0	89.00	270.20	6,883.2	231.3	-605.5	610.9	1.13	0.85	-0.74
7,511.0	89.00	269.30	6,884.8	230.9	-699.4	704.8	0.96	0.00	-0.96
7,606.0	88.60	268.60	6,886.8	229.2	-794.4	799.7	0.85	-0.42	-0.74
7,700.0	90.40	270.90	6,887.7	228.8	-888.4	893.7	3.11	1.91	2.45
7,795.0	90.50	270.00	6,886.9	229.5	-983.4	988.6	0.95	0.11	-0.95
7,889.0	90.50	269.50	6,886.1	229.1	-1,077.4	1,082.6	0.53	0.00	-0.53
7,983.0	90.70	268.90	6,885.1	227.8	-1,171.4	1,176.5	0.67	0.21	-0.64
8,077.0	89.20	269.30	6,885.2	226.3	-1,265.3	1,270.4	1.65	-1.60	0.43
8,171.0	90.00	269.60	6,885.8	225.4	-1,359.3	1,364.4	0.91	0.85	0.32
8,265.0	88.90	268.60	6,886.7	223.9	-1,453.3	1,458.3	1.58	-1.17	-1.06
8,360.0	89.80	270.50	6,887.8	223.2	-1,548.3	1,553.2	2.21	0.95	2.00
8,453.0	89.50	270.00	6,888.4	223.6	-1,641.3	1,646.2	0.63	-0.32	-0.54
8,545.0	89.30	269.80	6,889.4	223.4	-1,733.3	1,738.2	0.31	-0.22	-0.22
8,637.0	90.00	270.20	6,889.9	223.4	-1,825.3	1,830.2	0.88	0.76	0.43
8,728.0	90.00	270.00	6,889.9	223.6	-1,916.3	1,921.1	0.22	0.00	-0.22
8,819.0	89.80	269.50	6,890.1	223.2	-2,007.3	2,012.1	0.59	-0.22	-0.55
8,911.0	90.10	268.80	6,890.2	221.8	-2,099.3	2,104.0	0.83	0.33	-0.76
9,002.0	90.10	269.80	6,890.0	220.7	-2,190.3	2,195.0	1.10	0.00	1.10
9,094.0	88.60	269.10	6,891.0	219.8	-2,282.3	2,286.9	1.80	-1.63	-0.76
9,186.0	89.80	268.80	6,892.3	218.2	-2,374.2	2,378.8	1.34	1.30	-0.33
9,278.0	88.00	269.30	6,894.1	216.6	-2,466.2	2,470.7	2.03	-1.96	0.54
9,369.0	87.90	269.30	6,897.3	215.5	-2,557.1	2,561.6	0.11	-0.11	0.00
9,461.0	88.90	270.50	6,899.9	215.4	-2,649.1	2,653.5	1.70	1.09	1.30
9,552.0	90.00	269.60	6,900.8	215.4	-2,740.1	2,744.5	1.56	1.21	-0.99
9,644.0	88.80	269.80	6,901.8	215.0	-2,832.1	2,836.4	1.32	-1.30	0.22
9,736.0	89.00	269.80	6,903.5	214.6	-2,924.1	2,928.4	0.22	0.22	0.00
9,827.0	89.70	271.20	6,904.5	215.4	-3,015.1	3,019.4	1.72	0.77	1.54
9,919.0	89.80	271.00	6,905.0	217.2	-3,107.0	3,111.4	0.24	0.11	-0.22

<b>Company:</b>	Bayswater Exploration & Production, LLC	<b>Local Co-ordinate Reference:</b>	Well Carlson D-15-16HN
<b>Project:</b>	SEC.15-T5N-R65W	<b>TVD Reference:</b>	WELL @ 4643.5ft (RKB - 22.5')
<b>Site:</b>	Carlson 15-D Pad Sec.15-T5N-R65W	<b>MD Reference:</b>	WELL @ 4643.5ft (RKB - 22.5')
<b>Well:</b>	Carlson D-15-16HN	<b>North Reference:</b>	True
<b>Wellbore:</b>	Wellbore #1	<b>Survey Calculation Method:</b>	Minimum Curvature
<b>Design:</b>	Wellbore #1	<b>Database:</b>	EDMNEW

Survey

Measured Depth (ft)	Inclination (°)	Azimuth (°)	Vertical Depth (ft)	+N/-S (ft)	+E/-W (ft)	Vertical Section (ft)	Dogleg Rate (°/100ft)	Build Rate (°/100ft)	Turn Rate (°/100ft)
10,011.0	90.40	271.00	6,904.8	218.8	-3,199.0	3,203.4	0.65	0.65	0.00
10,103.0	90.90	270.70	6,903.7	220.2	-3,291.0	3,295.4	0.63	0.54	-0.33
10,194.0	89.60	270.50	6,903.4	221.1	-3,382.0	3,386.3	1.45	-1.43	-0.22
10,285.0	89.40	271.00	6,904.1	222.3	-3,473.0	3,477.3	0.59	-0.22	0.55
10,377.0	90.40	270.00	6,904.3	223.1	-3,565.0	3,569.3	1.54	1.09	-1.09
10,469.0	88.70	269.50	6,905.0	222.7	-3,657.0	3,661.3	1.93	-1.85	-0.54
10,561.0	89.50	270.30	6,906.5	222.6	-3,749.0	3,753.2	1.23	0.87	0.87
10,653.0	89.80	271.70	6,907.0	224.2	-3,840.9	3,845.2	1.56	0.33	1.52
10,744.0	89.00	267.70	6,908.0	223.7	-3,931.9	3,936.2	4.48	-0.88	-4.40
10,836.0	89.90	268.40	6,908.9	220.6	-4,023.9	4,028.0	1.24	0.98	0.76
10,927.0	89.40	267.90	6,909.4	217.6	-4,114.8	4,118.9	0.78	-0.55	-0.55
11,019.0	88.50	270.00	6,911.1	215.9	-4,206.8	4,210.8	2.48	-0.98	2.28
11,111.0	89.00	269.50	6,913.1	215.5	-4,298.7	4,302.7	0.77	0.54	-0.54
11,202.0	89.10	269.80	6,914.6	215.0	-4,389.7	4,393.6	0.35	0.11	0.33
11,297.0	90.30	270.50	6,915.1	215.2	-4,484.7	4,488.6	1.46	1.26	0.74
11,391.0	90.70	270.50	6,914.3	216.0	-4,578.7	4,582.6	0.43	0.43	0.00
11,485.0	89.90	268.80	6,913.8	215.5	-4,672.7	4,676.6	2.00	-0.85	-1.81
11,579.0	90.40	268.40	6,913.6	213.2	-4,766.7	4,770.4	0.68	0.53	-0.43
11,674.0	89.00	268.20	6,914.1	210.4	-4,861.6	4,865.3	1.49	-1.47	-0.21
11,768.0	89.40	268.40	6,915.4	207.6	-4,955.6	4,959.2	0.48	0.43	0.21
11,862.0	90.00	270.00	6,915.9	206.3	-5,049.6	5,053.1	1.82	0.64	1.70
11,956.0	89.90	269.60	6,916.0	205.9	-5,143.6	5,147.0	0.44	-0.11	-0.43
12,051.0	90.50	268.60	6,915.6	204.4	-5,238.6	5,242.0	1.23	0.63	-1.05
12,145.0	87.80	269.30	6,917.0	202.7	-5,332.5	5,335.9	2.97	-2.87	0.74
12,239.0	87.80	268.90	6,920.6	201.2	-5,426.4	5,429.7	0.43	0.00	-0.43
12,333.0	88.10	270.30	6,924.0	200.6	-5,520.4	5,523.6	1.52	0.32	1.49
12,427.0	89.30	271.40	6,926.1	202.0	-5,614.3	5,617.6	1.73	1.28	1.17
12,522.0	90.30	271.60	6,926.4	204.5	-5,709.3	5,712.6	1.07	1.05	0.21
12,616.0	89.00	270.20	6,927.0	205.9	-5,803.3	5,806.6	2.03	-1.38	-1.49
12,644.9	89.52	270.20	6,927.4	206.0	-5,832.2	5,835.5	1.81	1.81	0.00
<b>WP #1 (D-15-16HN)</b>									
12,710.0	90.70	270.20	6,927.3	206.3	-5,897.3	5,900.5	1.81	1.81	0.00
12,804.0	90.70	268.80	6,926.1	205.4	-5,991.3	5,994.5	1.49	0.00	-1.49
12,899.0	90.70	269.60	6,925.0	204.1	-6,086.3	6,089.4	0.84	0.00	0.84
12,993.0	90.30	269.60	6,924.1	203.5	-6,180.2	6,183.4	0.43	-0.43	0.00
13,087.0	90.30	269.10	6,923.6	202.4	-6,274.2	6,277.3	0.53	0.00	-0.53
13,181.0	90.60	269.30	6,922.9	201.1	-6,368.2	6,371.2	0.38	0.32	0.21
13,275.0	91.00	268.90	6,921.6	199.6	-6,462.2	6,465.1	0.60	0.43	-0.43
13,369.0	90.40	270.20	6,920.4	198.9	-6,556.2	6,559.1	1.52	-0.64	1.38
13,463.0	90.70	270.20	6,919.5	199.2	-6,650.2	6,653.1	0.32	0.32	0.00
13,557.0	89.80	268.90	6,919.1	198.5	-6,744.2	6,747.0	1.68	-0.96	-1.38
13,651.0	88.70	268.90	6,920.4	196.7	-6,838.2	6,840.9	1.17	-1.17	0.00
13,745.0	89.30	268.60	6,922.0	194.6	-6,932.1	6,934.8	0.71	0.64	-0.32
13,839.0	89.30	268.10	6,923.2	191.9	-7,026.1	7,028.7	0.53	0.00	-0.53
13,934.0	89.60	269.30	6,924.1	189.7	-7,121.0	7,123.5	1.30	0.32	1.26
14,028.0	89.70	269.80	6,924.6	189.0	-7,215.0	7,217.5	0.54	0.11	0.53
14,122.0	89.30	271.20	6,925.5	189.8	-7,309.0	7,311.5	1.55	-0.43	1.49
14,216.0	89.40	270.90	6,926.5	191.5	-7,403.0	7,405.5	0.34	0.11	-0.32
14,311.0	88.60	270.30	6,928.2	192.5	-7,498.0	7,500.4	1.05	-0.84	-0.63
14,405.0	89.50	271.20	6,929.7	193.8	-7,592.0	7,594.4	1.35	0.96	0.96
14,499.0	90.80	271.20	6,929.5	195.7	-7,685.9	7,688.4	1.38	1.38	0.00
14,593.0	90.70	269.50	6,928.3	196.3	-7,779.9	7,782.4	1.81	-0.11	-1.81
14,700.0	91.50	270.90	6,926.2	196.7	-7,886.9	7,889.4	1.51	0.75	1.31
14,760.0	91.50	270.90	6,924.6	197.6	-7,946.9	7,949.3	0.00	0.00	0.00

<b>Company:</b>	Bayswater Exploration & Production, LLC	<b>Local Co-ordinate Reference:</b>	Well Carlson D-15-16HN
<b>Project:</b>	SEC.15-T5N-R65W	<b>TVD Reference:</b>	WELL @ 4643.5ft (RKB - 22.5')
<b>Site:</b>	Carlson 15-D Pad Sec.15-T5N-R65W	<b>MD Reference:</b>	WELL @ 4643.5ft (RKB - 22.5')
<b>Well:</b>	Carlson D-15-16HN	<b>North Reference:</b>	True
<b>Wellbore:</b>	Wellbore #1	<b>Survey Calculation Method:</b>	Minimum Curvature
<b>Design:</b>	Wellbore #1	<b>Database:</b>	EDMNEW

Survey

Measured Depth (ft)	Inclination (°)	Azimuth (°)	Vertical Depth (ft)	+N/-S (ft)	+E/-W (ft)	Vertical Section (ft)	Dogleg Rate (°/100ft)	Build Rate (°/100ft)	Turn Rate (°/100ft)
BHL 820'FNL, 2341'FWL, SEC.16									

Design Targets

Target Name - hit/miss target - Shape	Dip Angle (°)	Dip Dir. (°)	TVD (ft)	+N/-S (ft)	+E/-W (ft)	Northing (ft)	Easting (ft)	Latitude	Longitude
SHL 1056'FNL, 279'FI - survey hits target center - Point	0.00	0.00	1.0	0.0	0.0	1,391,065.25	3,239,231.97	40.403695	-104.640970
WP #1 (D-15-16HN) - survey misses target center by 5.2ft at 12644.8ft MD (6927.4 TVD, 206.0 N, -5832.1 E) - Point	0.00	0.00	6,922.5	204.2	-5,832.2	1,391,212.92	3,233,398.31	40.404254	-104.661911
BHL 820'FNL, 2341'FI - survey misses target center by 12.0ft at 14760.0ft MD (6924.6 TVD, 197.6 N, -7946.9 E) - Point	0.00	0.00	6,926.5	192.2	-7,957.4	1,391,180.33	3,231,273.38	40.404219	-104.669542

Checked By: \_\_\_\_\_ Approved By: \_\_\_\_\_ Date: \_\_\_\_\_