



Scale: 5" / 100'
Measured Depth Log

Well Name Carlson D-15-16HN

Location NENE Sec 15 T5N R65W 1056 FNL 279 FEL

State Colorado

County Weld

Country United States

Rig Number Frontier (Utah) 8

API Number 05-123-41714

AFE # 41714

Region DJ Basin

Field Wattenberg

Spud Date 7/14/2015

Drilling Completed 8/28/2015

Surface Coordinates N 40.403694 W 104.640808

Ground Elevation 4621'

K.B. Elevation 4643'

Logged Interval 6000' To 14760'

Total Depth 14760'

Formation Niobrara

Type of Drilling Fluid LSND

Operator

Company Bayswater Exploration & Production, LLC.

Address 730 17th St.
Denver, CO 80202

Geologist

Name Mark E. Brown

Company Bayswater Exploration & Production, LLC.

Address 730 17th St.
Denver, CO 80202



Other

Robert Davis Wellsite Geologist

Joey Luce Wellsite Geologist

Ben Katka Wellsite Geologist

Columbine Logging Computer 148

Bloodhound Unit 298

Shanna Gilbert Wellsite Geologist

Hole Profile

Bore Hole Records

Size	From	To
8.75	850.0	7315.0
6.125	7315.0	0.0

Casing Records

Size	Wgt	From	To	Test
9.625	36	23	841	
7	29	26	7302	

Zone Color Coding

- Oil

Note

Error
- Condensate

Core

Water
- Gas

Pressure

Seal

Rock Types

- UNKNOWN

ANHYDRITE

BENTONITE

BRECCIA

CHALK

CEMENT

CHERT

CLAY CHOKE SANC

CLAYSTONE
- COAL

CONGLOMERATE

DOLOMITE

DOLOMITIC LIMESTONE

GRANITE

GYPSSUM

IGNEOUS

SIDERITE or LIMONITE

LIMESTONE
- MARLSTONE

METAMORPHIC

NO SAMPLE

SALT

SANDSTONE

SALT-PEPPER SANC

SHALE

SHALE COLORED

SHALE GRAY
- SHALY SANDSTONE

SHALY SILTSTONE

SILTSTONE

TILL

TUFF

WELDED TUFF

Fossils

- GASTROPOD

INOCERAMUS

OOLITE

OSTRACOD

PELECYPOD

PELLET

PISOLITE

PLANT REMAINS

SCAPHOPOD

STROMATOPOROID
- ALGAE

AMPHIPORA

BENTONITE

BIOCLASTIC

BRYOZOA

CEPHALOPOD

CORAL

CRINOID

ECHINOID
- FISH

FORAMINIFERA

FOSSIL
- ARG

B BEN

BITU

BRE

CALC

CART

CHT

COA

DOL

FELD
- ANHYDRITIC

ARGILLACEOUS
- FERP

FER

GLA

GYP

Minerals

- P PINPOINT

V VUGGY

Oil Show

- DEAD

EVEN

QUESTIONABLE

SPOTTED STAINING
- BIT

CONNECTION (UP)

Engineering

- CONNECTION (DOWN)

CONNECTION GAS

CONNECTION GAS (LEFT)

TRIP GAS

TRIP GAS (LEFT)

DOWN TIME GAS

DOWN TIME GAS (LEFT)

CORE - LOST

CORE - RECOVERED
- E EARTHY

FENESTRAL

F FRACTURE

INTERCRYSTALLINE

INTEROOLITIC

MOLDIC

ORGANIC

Porosity

Accessories

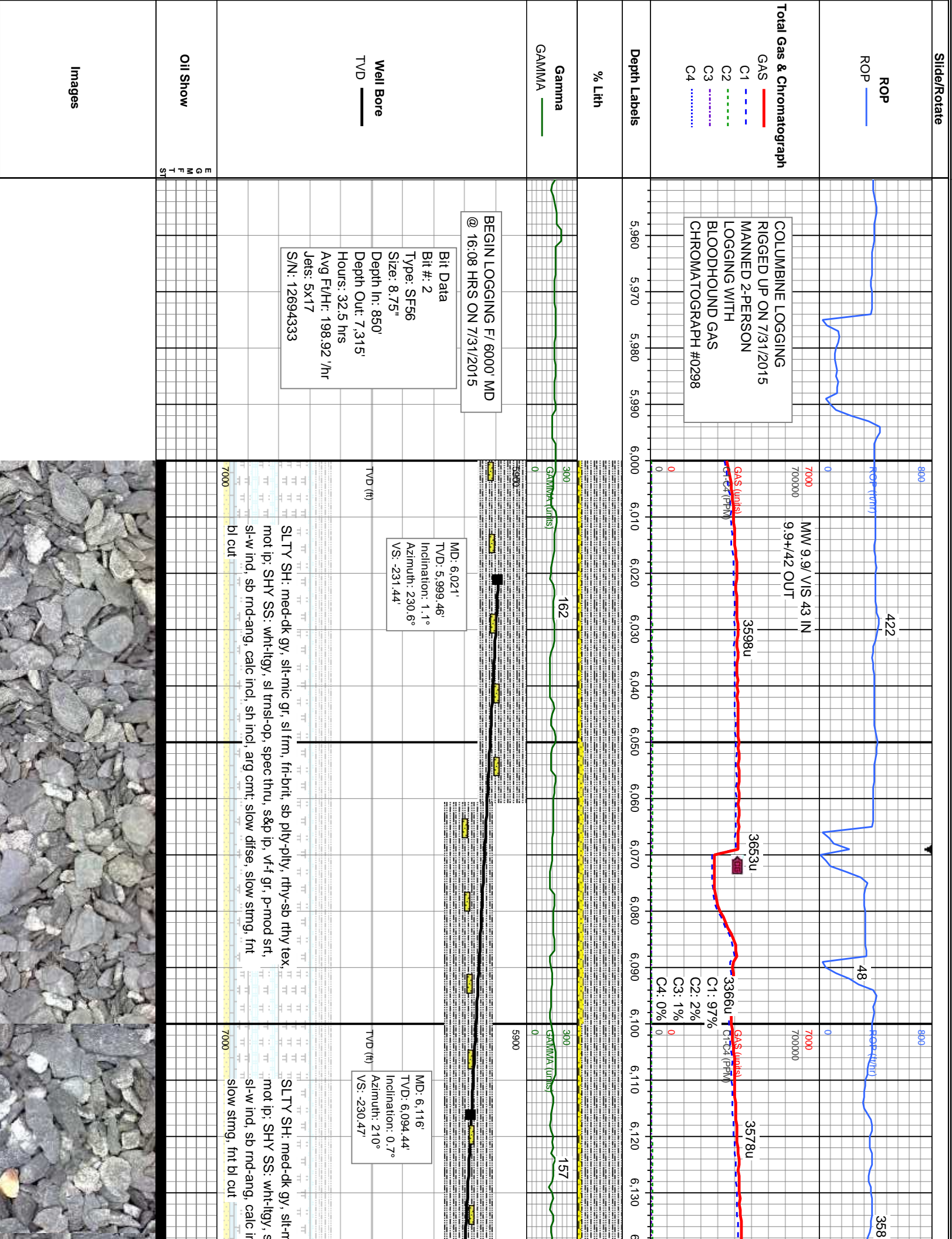
	ILLITE GRAIN	➤ HEAVY MINERAL
	TOINITE	K KAOLIN
	MENOUS SUBSTANCE	A MARCASTE
	COCA FRAGMENTS	T MARSTONE
	CAREOUS	T MICACIOUS
	BOONACEOUS FLAKES	M MINERAL CRYSTALS
	DOK	N NODULES
	LIT	P PHOSPHATE PELLETS
	1. - THIN BEDS	P PYRITE
	OMITIC	B SALT CAST
	SAPAR	. SANDY
	RUGINOUS PELLET	\$ SIDERITE
	RUGINOUS	✓ SILICEAUS
	UCONITE	✓ SLTYCE
	FEROUS	✓ TUFFACEOUS

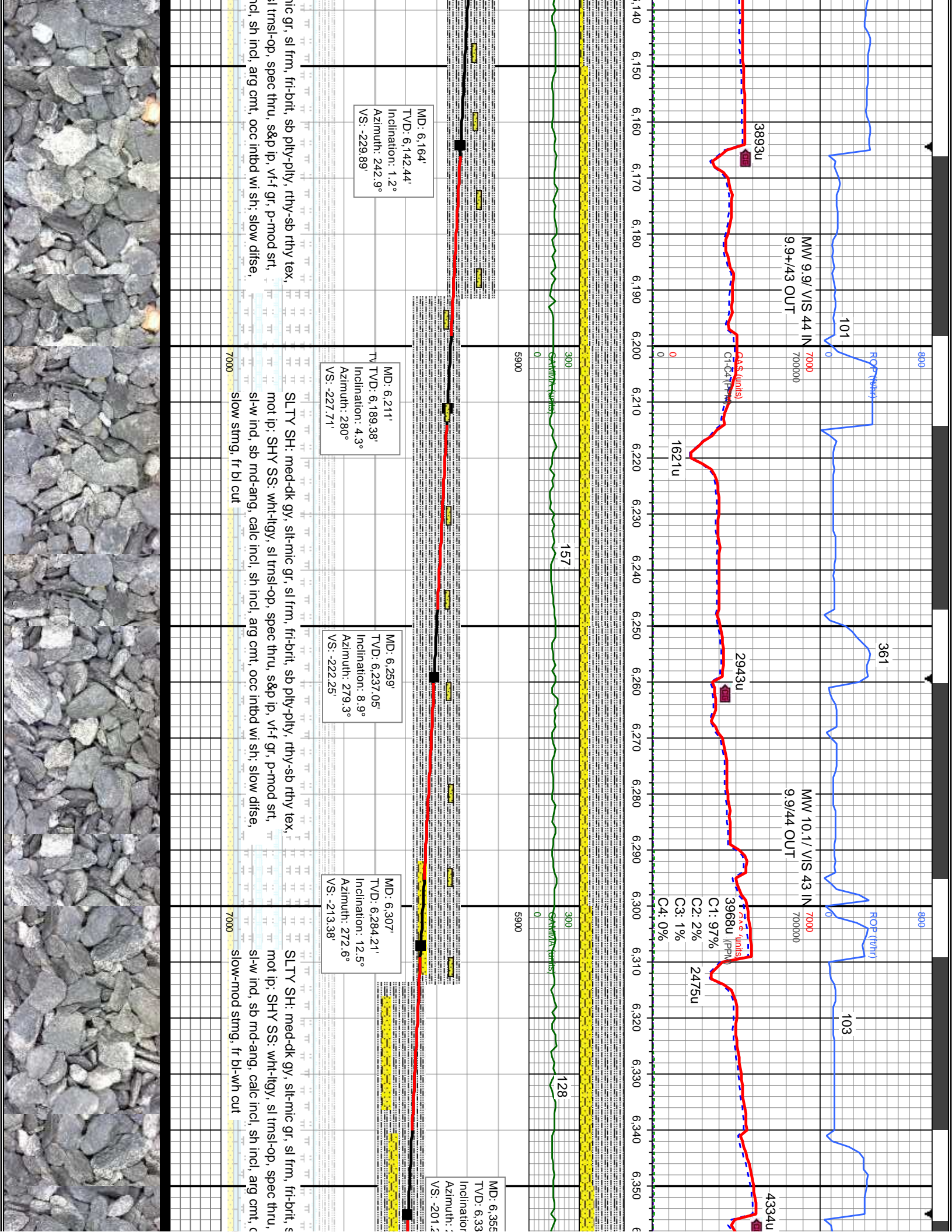
Stringer

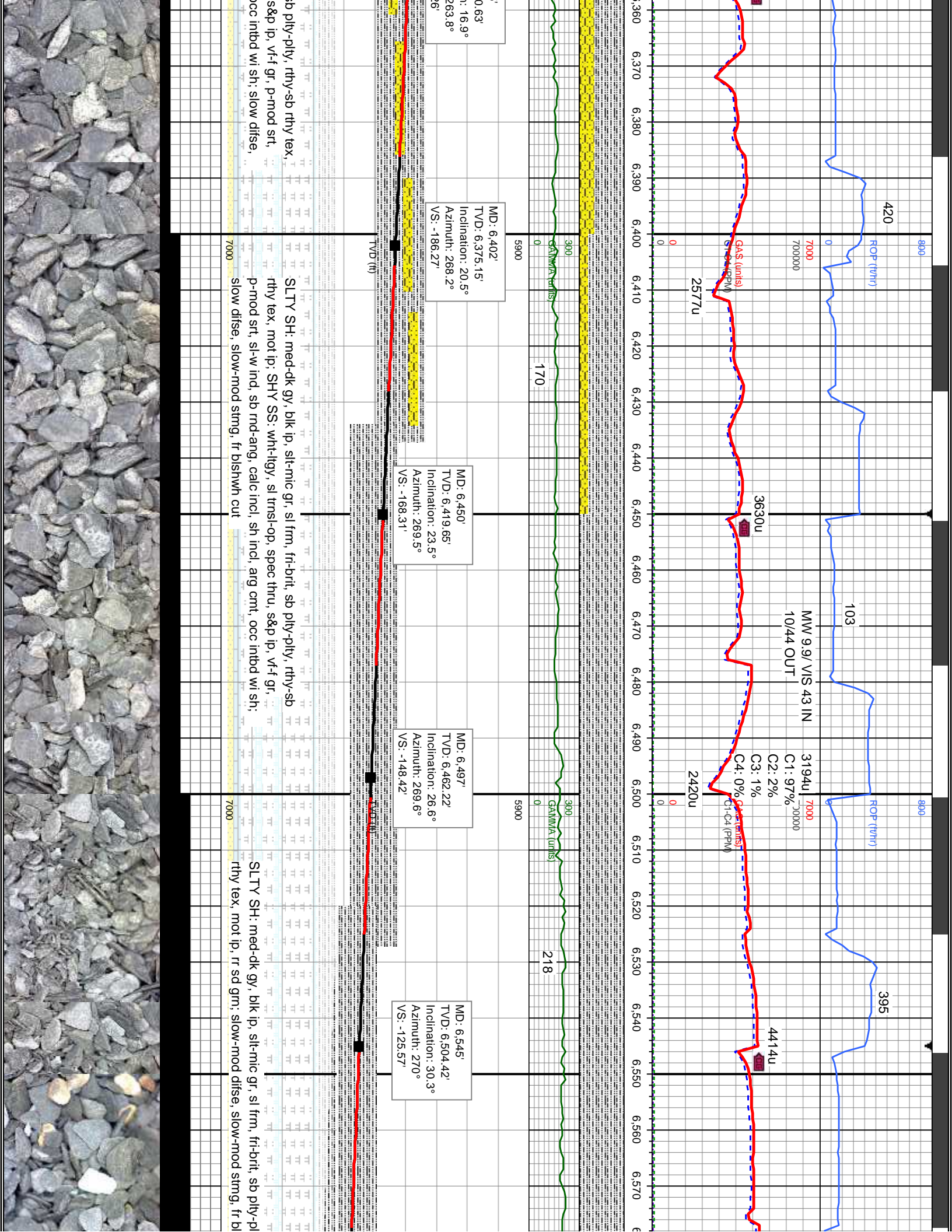
	ANYDRITE STRINGER
	BENTONITE STRINGER
	COAL STRINGER
	DOLOMITE STRINGER
	GYPSEUM STRINGER
	LIMESTONE STRINGER
	MARLSTONE (CALC) STRG
	MARLSTONE (DOL) STRG
	SANDSTONE STRINGER
	SHALE STRINGER
	SILTSTONE STRINGER

Other Symbols

[illegible]

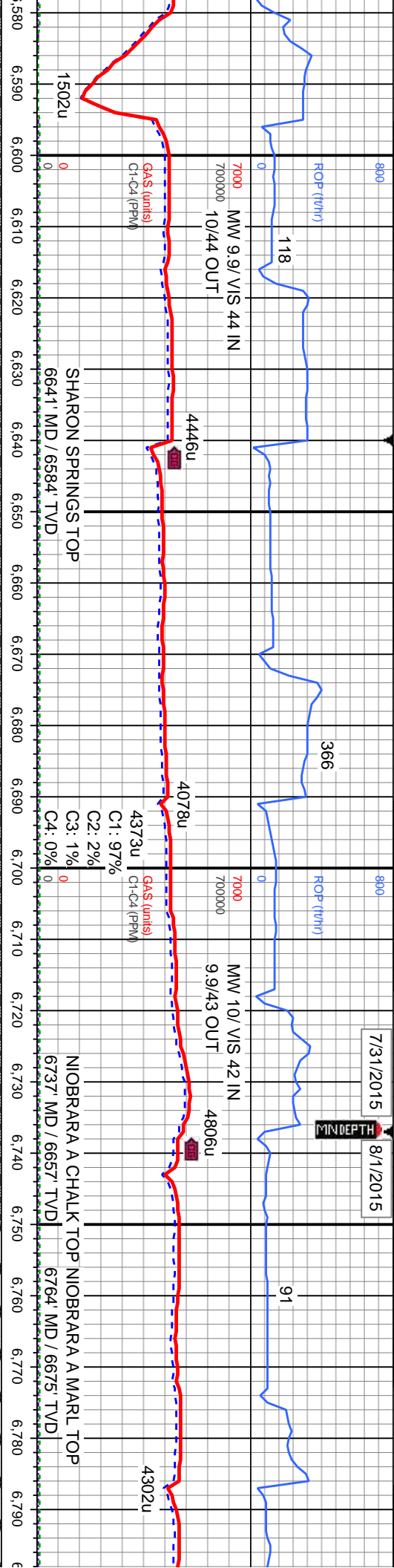






7/31/2015 8/1/2015

MINDEPTH

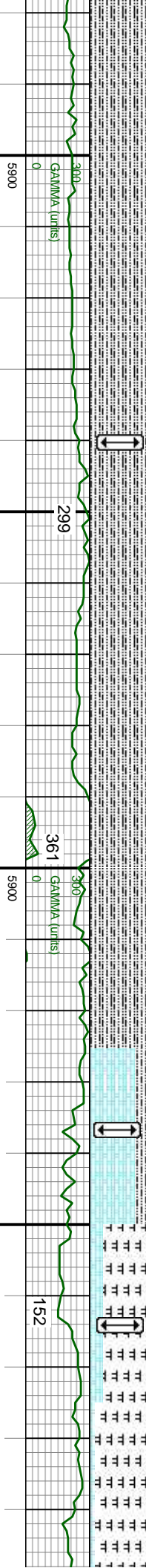


ROP (ft/hr)
118
7000 MW 9.9/ VIS 44 IN
700000 10/44 OUT

4446u
SHARON SPRINGS TOP
6641' MD / 6584' TVD

366
4078u
4373u
C1: 97%
C2: 2%
C3: 1%
C4: 0%
7000 MW 10/ VIS 42 IN
700000 9.9/43 OUT
4806u

NIOBRARA A CHALK TOP NIOBRARA A MARL TOP
6737 MD / 6657' TVD
6764 MD / 6675' TVD
4302u



GAMMA (units)
299
361
152

MD: 6,592'
TVD: 6,544.16'
Inclination: 34.2°
Azimuth: 269.3°
VS: -100.5'

MD: 6,640'
TVD: 6,583.18'
Inclination: 37°
Azimuth: 269.6°
VS: -72.58'

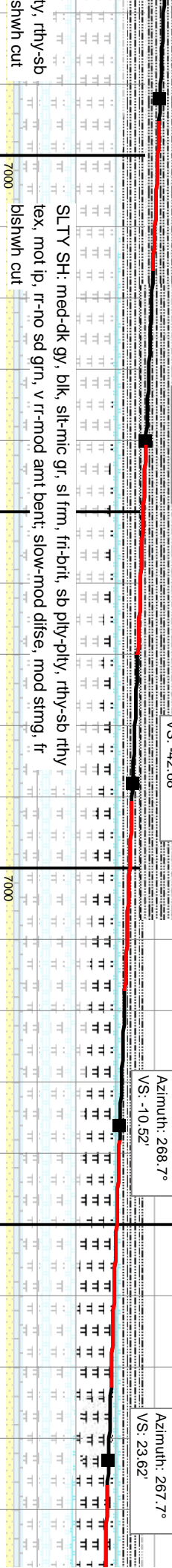
MD: 6,688'
TVD: 6,620.72'
Inclination: 40.1°
Azimuth: 271.7°
VS: -42.68'

MD: 6,736'
TVD: 6,656.33'
Inclination: 44.1°
Azimuth: 268.7°
VS: -10.52'

MD: 6,783'
TVD: 6,688.55'
Inclination: 49.3°
Azimuth: 267.7°
VS: 23.62'

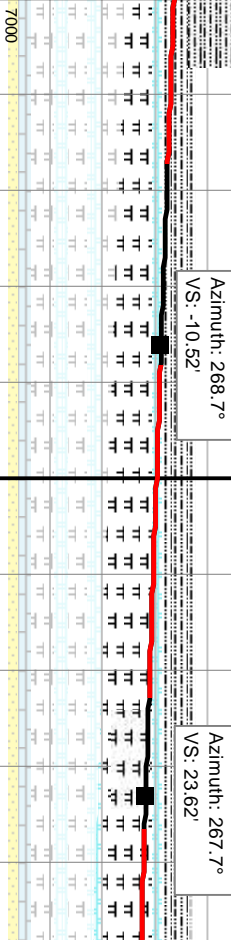
CHK: lt-medgy, some wh, crm-brn, str, mot, sb ply-blky, brit, sl sft-firm, sb rthy-sm tex, v calc, tr pyr; SLTY SH: med-dk gy, blk, slt-mic gr, sl frm, frt-brit, sb ply-ply, rthy-sb rthy tex, mot ip, rr-no sd grn, v rr-mod amt bent; mod difse, mod stmg, bri blshwh cut

MRLST: med-dk gy, mot-spec, slt gr, sl frm, sb ply-ply, gt tex, calc, tr pyr, rr bent; CHK: lt-medgy, crm-brn, str, mot, sb ply-blky, brit, sl sft-firm, sb rthy-sm tex, v calc; mod difse, mod stmg, bri blshwh cut

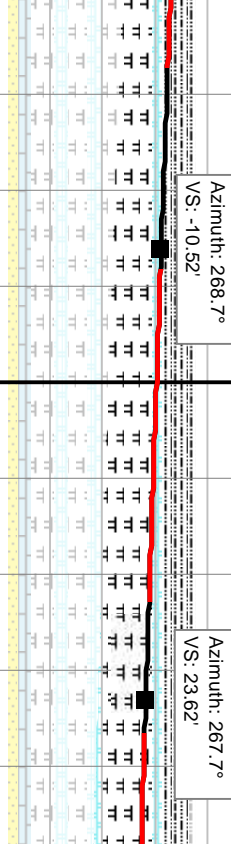


rthy-sb
bishwh cut

SLTY SH: med-dk gy, blk, slt-mic gr, sl frm, frt-brit, sb ply-ply, rthy-sb rthy tex, mot ip, rr-no sd grn, v rr-mod amt bent; slow-mod difse, mod stmg, fr



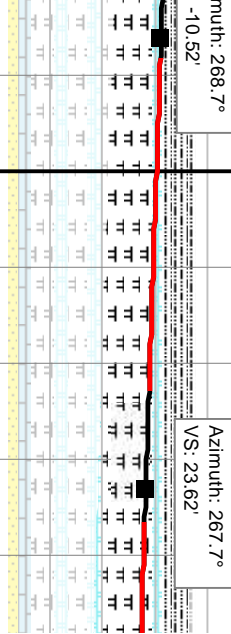
rthy-sb
bishwh cut



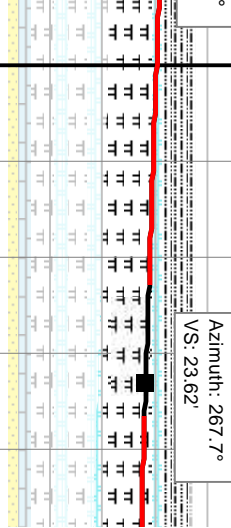
rthy-sb
bishwh cut



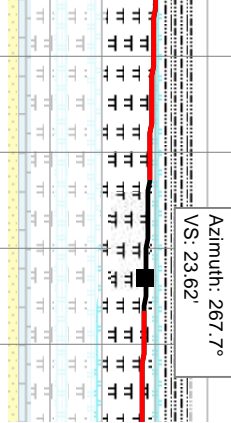
rthy-sb
bishwh cut



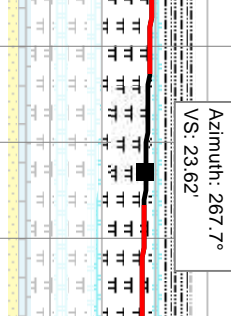
rthy-sb
bishwh cut



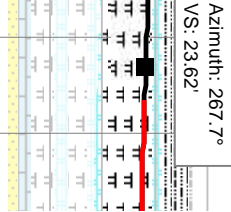
rthy-sb
bishwh cut



rthy-sb
bishwh cut



rthy-sb
bishwh cut



rthy-sb
bishwh cut



rthy-sb
bishwh cut



8/2/2015 - 8/25/2015

ROP (W/H)

121

192

93

190

MW 9.4+ VIS 42 IN
9.2+45 OUT

MUD WT 9.3/ VIS 40

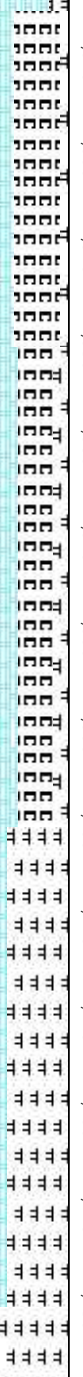
4480u
C1: .97%
C2: .2%
C3: .1%
C4: .0%

Landed Curve @ MD 7315'
8/1/2015 @ 06:53 MST
Began Drilling Lateral @
18:21 hrs MST 8/25/2015

GAS (units)
C1-C4 (PPM)

5349u

2327u



95

GAMA (units)

111

184

GAMA (units)

CHK: lt-med gy, str, sb ply-blky, brit, sl sft, sb rthy-sm tex, v calc; MRLST: med-dk gy, mot-spec, slt gr, sl frm, sb ply-pty, gt tex, calc, tr diss pyr, tr bent; fast difse, mod stmg, bri blshwh cut

MD: 7,323'
TVD: 6,880.91'
Inclination: 88.2°
Azimuth: 270.9°
VS: 516.89'

Bit Data
Bit #: 3
Type: SK516M-E1-Z
Size: 6.12
Depth In: 7,315'
Jets: 3x16/2x18
S/N: A213638

C Chalk

TVD SCALE CHANGE

MD: 7,265'
TVD: 6,877.06'
Inclination: 84.2°
Azimuth: 270.5°
VS: 459.03'

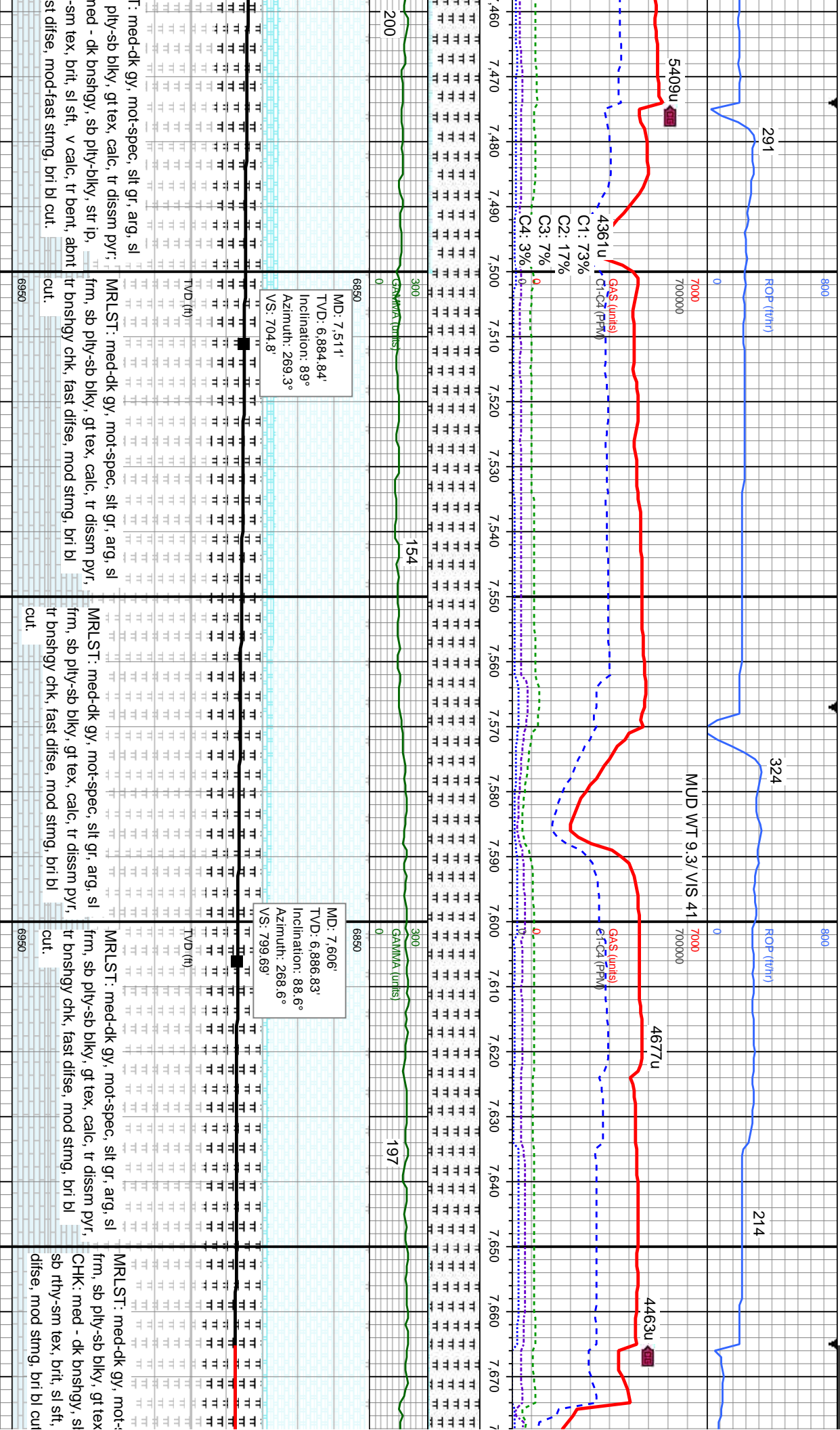
CHK: med - dk gy, sb ply-blky, str ip, sb rthy-sm tex, brit, sl sft, v calc; MRLST: med-dk gy, mot-spec, slt gr, arg, sl frm, sb ply-sb blky, gt tex, calc, tr diss pyr, fast difse, mod-fast stmg, bri bl cut.

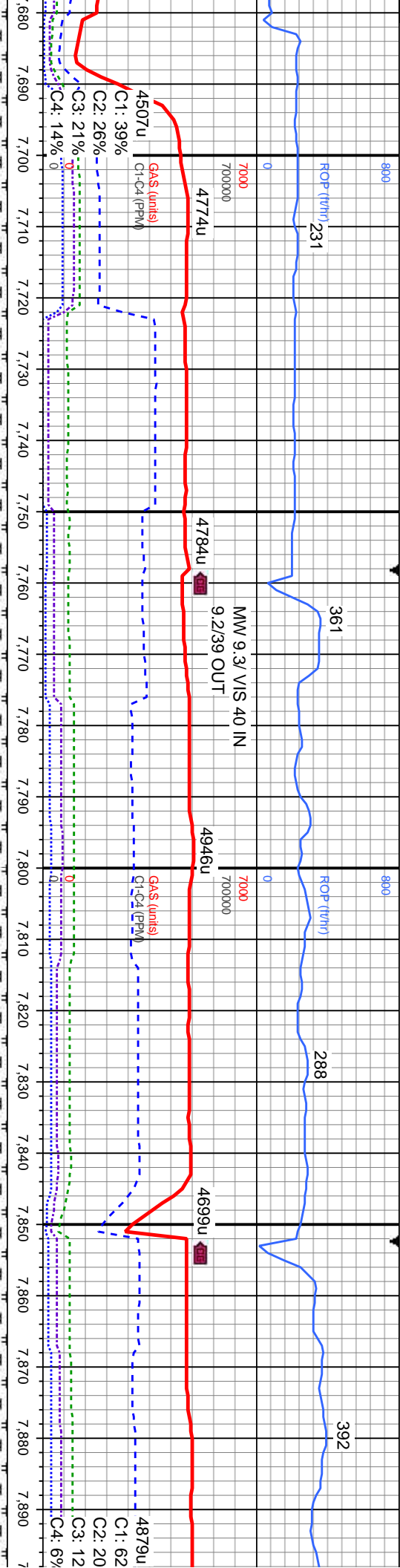
CHK: med - dk gy, sb ply-blky, str ip, sb rthy-sm tex, brit, sl sft, v calc; MRLST: med-dk gy, mot-spec, slt gr, arg, sl frm, sb ply-sb blky, gt tex, calc, tr diss pyr, fast difse, mod-fast stmg, bri bl cut.

MRLST: med-dk gy, mot-spec, slt gr, arg, sl frm, sb ply-sb blky, gt tex, calc, tr diss pyr; CHK: med - dk bshgy, sb ply-blky, str ip, sb rthy-sm tex, brit, sl sft, v calc, tr bent, abnt cnt, fast difse, mod-fast stmg, bri bl cut.

MRLS: frm, sb rthy, CHK: r







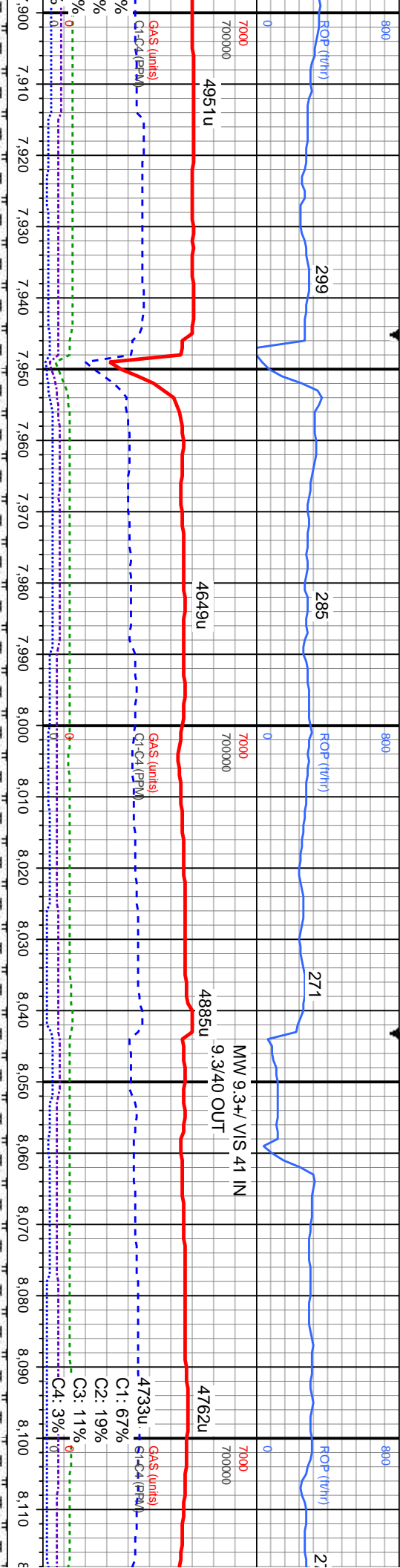
MD: 7,700'
TVD: 6,887.65'
Inclination: 90.4°
Azimuth: 270.9°
VS: 893.64'

MD: 7,795'
TVD: 6,886.91'
Inclination: 90.5°
Azimuth: 270°
VS: 988.62'

MD: 7,889'
TVD: 6,886.09'
Inclination: 90.5°
Azimuth: 269.5°
VS: 1,082.58'

Depth (ft)	ROP (ft/hr)	GCS (inches)	C1-C4 (PPM)	VS (ft)
7,680	231	4507u	39%	893.64'
7,690	231	4507u	39%	893.64'
7,700	231	4507u	39%	893.64'
7,710	231	4507u	39%	893.64'
7,720	231	4507u	39%	893.64'
7,730	231	4507u	39%	893.64'
7,740	231	4507u	39%	893.64'
7,750	231	4507u	39%	893.64'
7,760	231	4507u	39%	893.64'
7,770	231	4507u	39%	893.64'
7,780	231	4507u	39%	893.64'
7,790	231	4507u	39%	893.64'
7,800	231	4507u	39%	893.64'
7,810	231	4507u	39%	893.64'
7,820	231	4507u	39%	893.64'
7,830	231	4507u	39%	893.64'
7,840	231	4507u	39%	893.64'
7,850	231	4507u	39%	893.64'
7,860	231	4507u	39%	893.64'
7,870	231	4507u	39%	893.64'
7,880	231	4507u	39%	893.64'
7,890	231	4507u	39%	893.64'



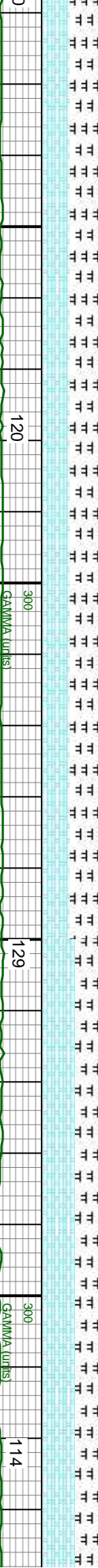
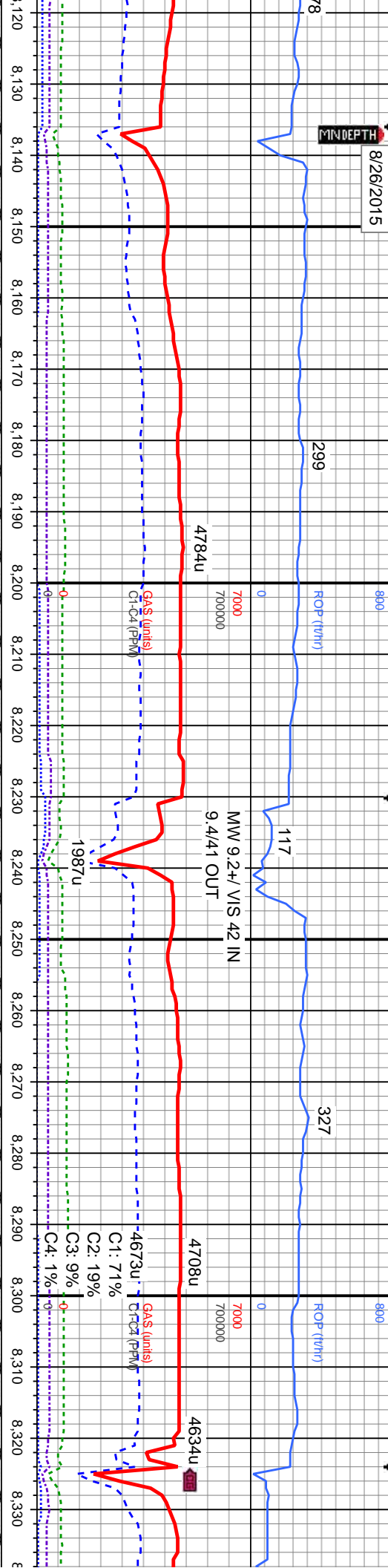


300	91	120	117	12
6850	6850	6850	6850	6850
TVD (ft)	TVD (ft)	TVD (ft)	TVD (ft)	TVD (ft)
CHK: med bnshgy, lt bnshgy ip, sb pily-biky, str & mot ip, sb rthy-sm tex, brit, sl sft, v calc; MRLST: med-dk gy, mot-spec, slt gr, arg, sl frm, sb pily-sb biky, gt tex, calc, fast difse, mod stimg, bri bl cut.	CHK: med bnshgy, lt bnshgy ip, sb pily-biky, str & mot ip, sb rthy-sm tex, brit, sl sft, v calc; MRLST: med-dk gy, mot-spec, slt gr, arg, sl frm, sb pily-sb biky, gt tex, calc, fast difse, mod stimg, bri bl cut.	CHK: med bnshgy, lt bnshgy ip, sb pily-biky, str & mot ip, sb rthy-sm tex, brit, sl sft, v calc; MRLST: med-dk gy, mot-spec, slt gr, arg, sl frm, sb pily-sb biky, gt tex, calc, fast difse, mod stimg, bri bl cut.	CHK: med bnshgy, lt bnshgy ip, sb pily-biky, str & mot ip, sb rthy-sm tex, brit, sl sft, v calc; MRLST: med-dk gy, mot-spec, slt gr, arg, sl frm, sb pily-sb biky, gt tex, calc, fast difse, mod stimg, bri bl cut.	CHK: med bnshgy, lt bnshgy ip, sb pily-biky, str & mot ip, sb rthy-sm tex, brit, sl sft, v calc; MRLST: med-dk gy, mot-spec, slt gr, arg, sl frm, sb pily-sb biky, gt tex, calc, fast difse, mod stimg, bri bl cut.
6950	6950	6950	6950	6950



8/26/2015

MINDEPTH



MD: 8,171'
TVD: 6,885.84'
Inclination: 90°
Azimuth: 269.6°
VS: 1,364.37'

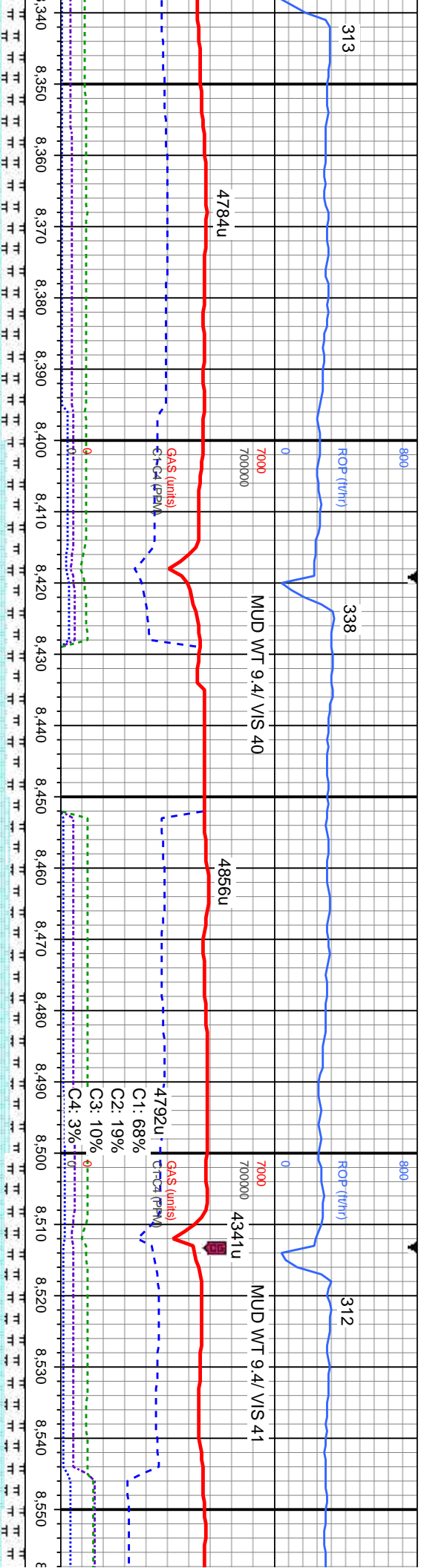
MD: 8,265'
TVD: 6,886.74'
Inclination: 88.9°
Azimuth: 268.6°
VS: 1,458.29'

CHK: med bnshgy, lt bnshgy ip, sb pty-blky, str & mot ip, sb rthy-sm tex, brt, sl sft, v calc; MRLST: med-dk gy, mot-spec, slt gr, arg, sl frm, sb pty-sb blky, gt tex, calc, tr fos frags, fast difse, mod stng, bri bl cut.

CHK: med bnshgy, lt bnshgy ip, sb pty-blky, str & mot ip, sb rthy-sm tex, brt, sl sft, v calc; MRLST: med-dk gy, mot-spec, slt gr, arg, sl frm, sb pty-sb blky, gt tex, calc, tr fos frags, fast difse, mod stng, bri bl cut.

CHK: med bnshgy, lt bnshgy ip, sb pty-blky, str & mot ip, sb rthy-sm tex, brt, sl sft, v calc; MRLST: med-dk gy, mot-spec, slt gr, arg, sl frm, sb pty-sb blky, gt tex, calc, tr fos frags, fast difse, mod stng, bri bl cut.





MD: 8.360'
TVD: 6.887.82'
Inclination: 89.8°
Azimuth: 270.5°
VS: 1.553.23'

MD: 8.453'
TVD: 6.888.39'
Inclination: 89.5°
Azimuth: 270°
VS: 1.646.21'

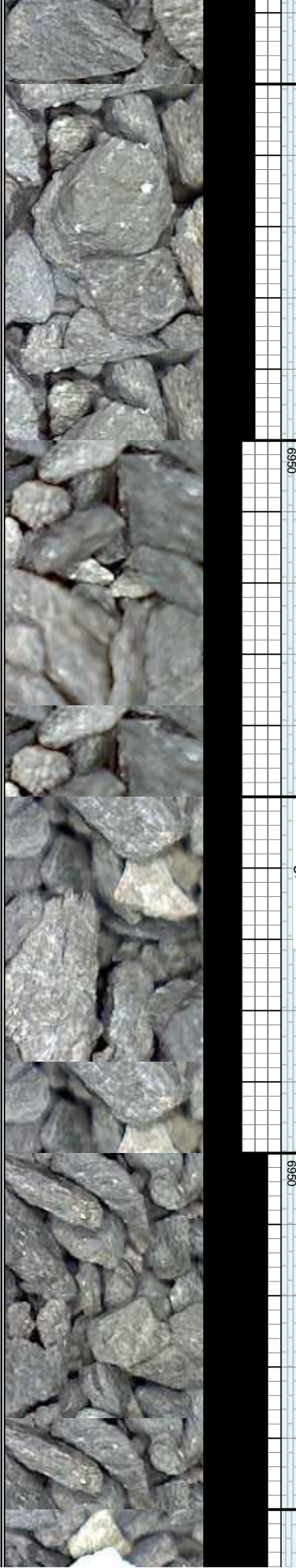
MD: 8.545'
TVD: 6.889.35'
Inclination: 89.3°
Azimuth: 269.8°
VS: 1.738.18'

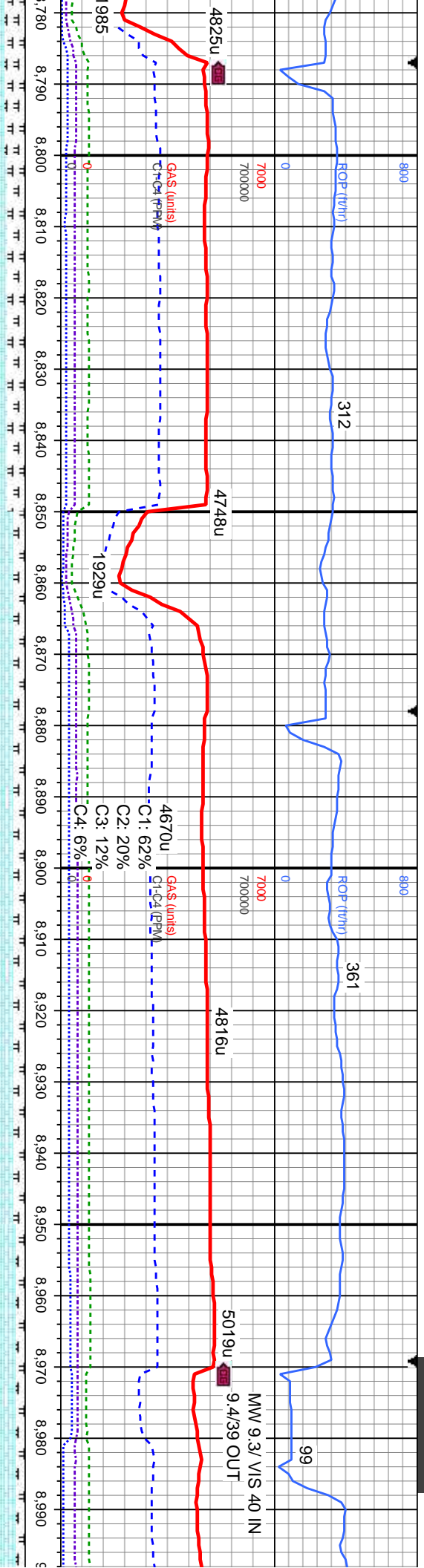
CHK: med bnshgy, lt bnshgy ip, sb ply-bkly, str & mot ip, sb rthy-sm tex, brit, sl stf, v calc; MRLST: med-dk gy, mot-spec, slt gr, arg, sl frm, sb ply-sb bkly, gt tex, calc, tr fos frags, fast difse, mod string, bri bl cut.

CHK: med bnshgy, lt bnshgy ip, sb ply-bkly, str & mot ip, sb rthy-sm tex, brit, sl stf, v calc; MRLST: med-dk gy, mot-spec, slt gr, arg, sl frm, sb ply-sb bkly, gt tex, calc, tr fos frags, mod difse, mod string, bl cut.

CHK: med bnshgy, lt bnshgy ip, sb ply-bkly, str & mot ip, sb rthy-sm tex, brit, sl stf, v calc; MRLST: med-dk gy, mot-spec, slt gr, arg, sl frm, sb ply-sb bkly, gt tex, calc, mod difse, mod string, bl cut.

CHK: med bnshgy, lt bnshgy ip, sb ply-bkly, str & mot ip, sb rthy-sm tex, brit, sl stf, v calc; MRLST: med-dk gy, mot-spec, slt gr, arg, sl frm, sb ply-sb bkly, gt tex, calc, tr fos frags, fast difse, mod string, bri bl cut.





89

300

GAMMA (units)

100

145

300

GAMMA (units)

93

MD: 8.819'
TVD: 6.890.07'
Inclination: 89.8°
Azimuth: 269.5°
VS: 2.012.09'

MD: 8.911'
TVD: 6.890.15'
Inclination: 90.1°
Azimuth: 268.8°
VS: 2.104.02'

MD:
TVD
Incl
Azim
VS: 1.1

ly-bkly, brit, sl sft,
RLST: med-dk gy,
m, sb pily-pily, gt
cut.

CHK: lt-med gy, str, sb pily-bkly, brit, sl sft,
sb rthy-sm tex, v calc; MRLST: med-dk gy,
mot-spec, slt gr, arg, sl frm, sb pily-pily, gt
tex, calc, fast difse, mod-fast string, bri bl
cut.

CHK: lt-med gy, str, sb pily-bkly, brit, sl sft,
sb rthy-sm tex, v calc; MRLST: med-dk gy,
mot-spec, slt gr, arg, sl frm, sb pily-pily, gt
tex, calc, fast difse, mod-fast string, bri bl
cut.

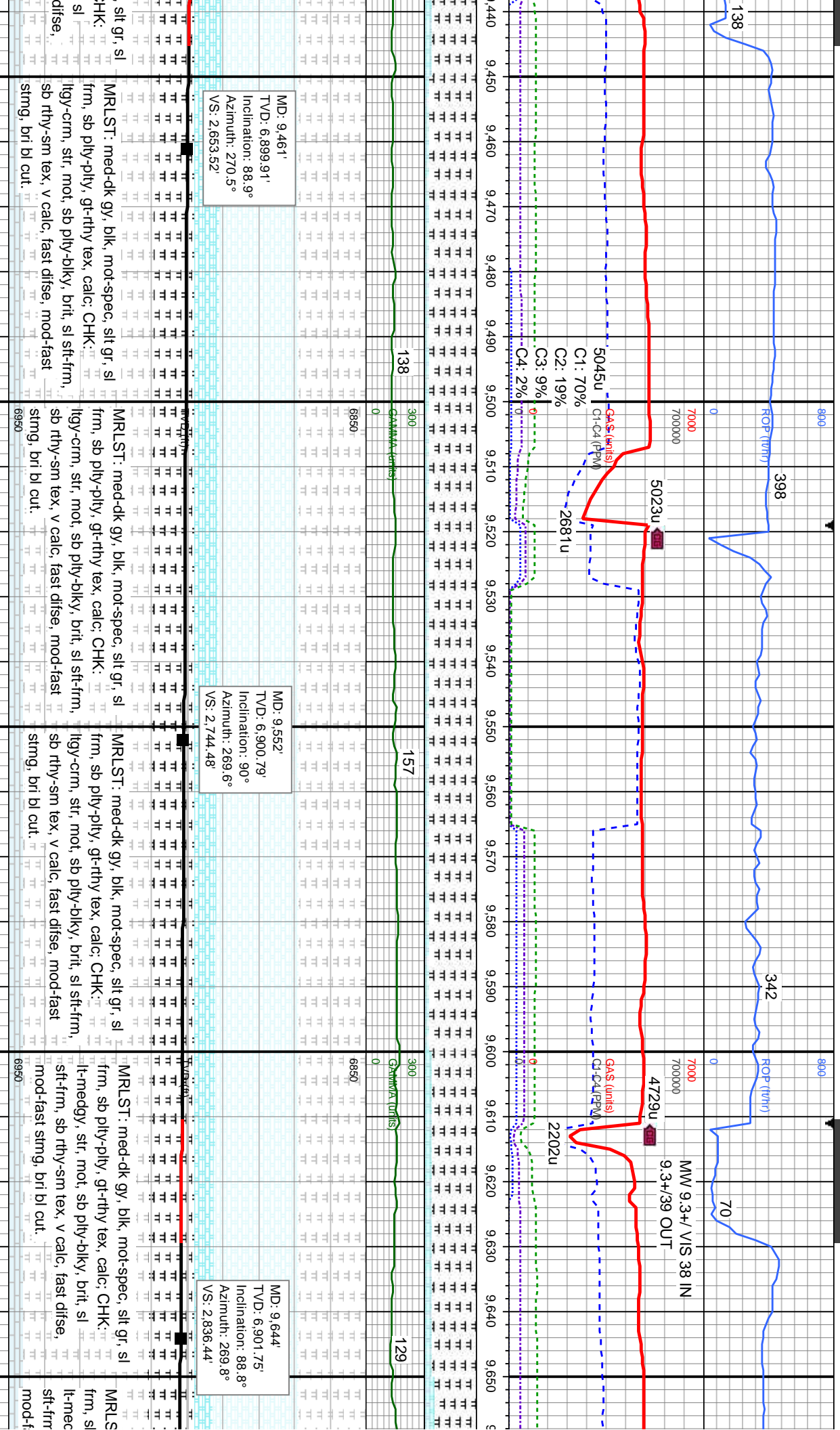
CHK: lt-med gy, str, sb pily-bkly, brit, sl sft,
sb rthy-sm tex, v calc; MRLST: med-dk gy,
mot-spec, slt gr, arg, sl frm, sb pily-pily, gt
tex, calc, fast difse, mod-fast string, bri bl
cut.

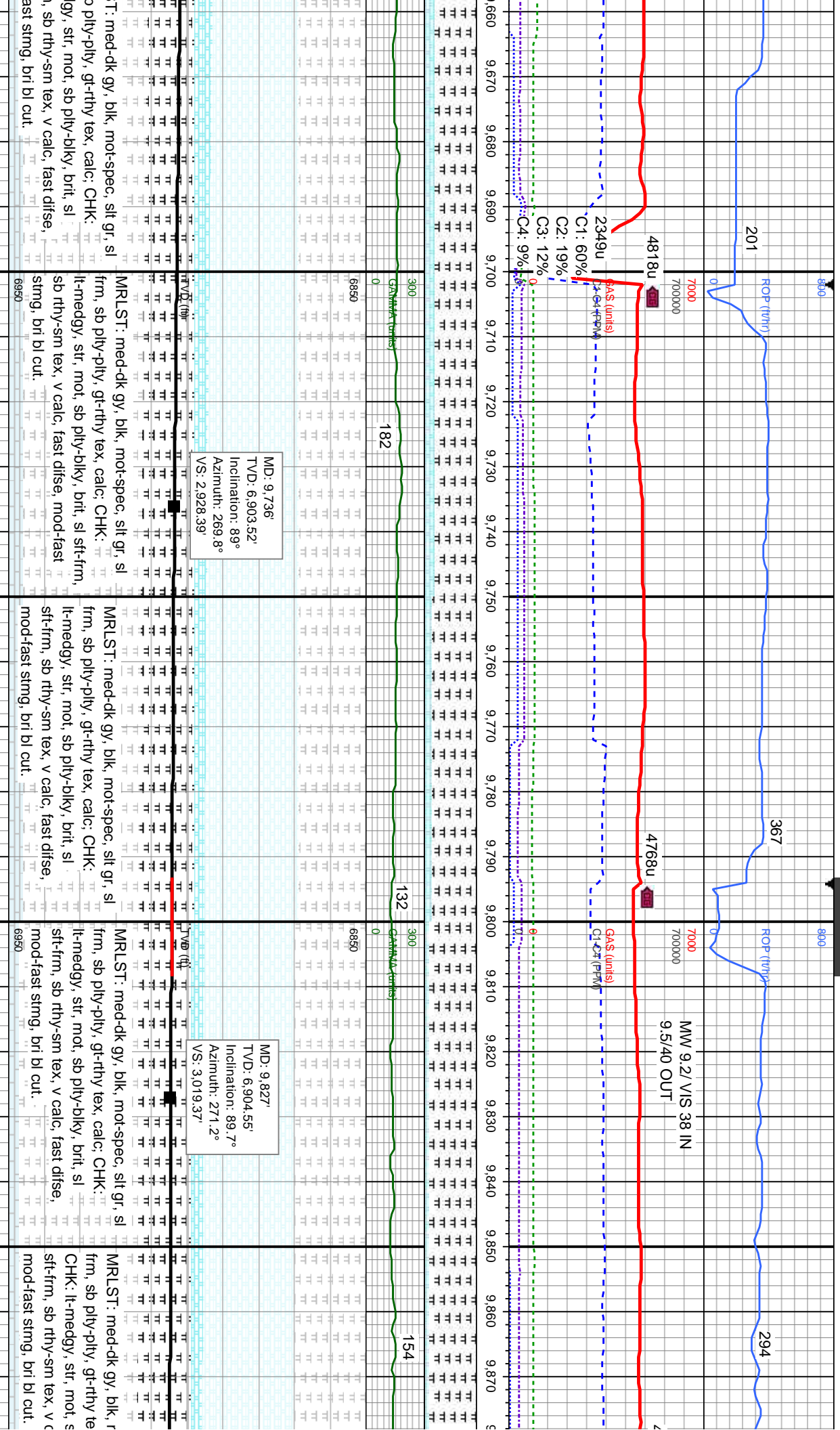
TVD (ft)

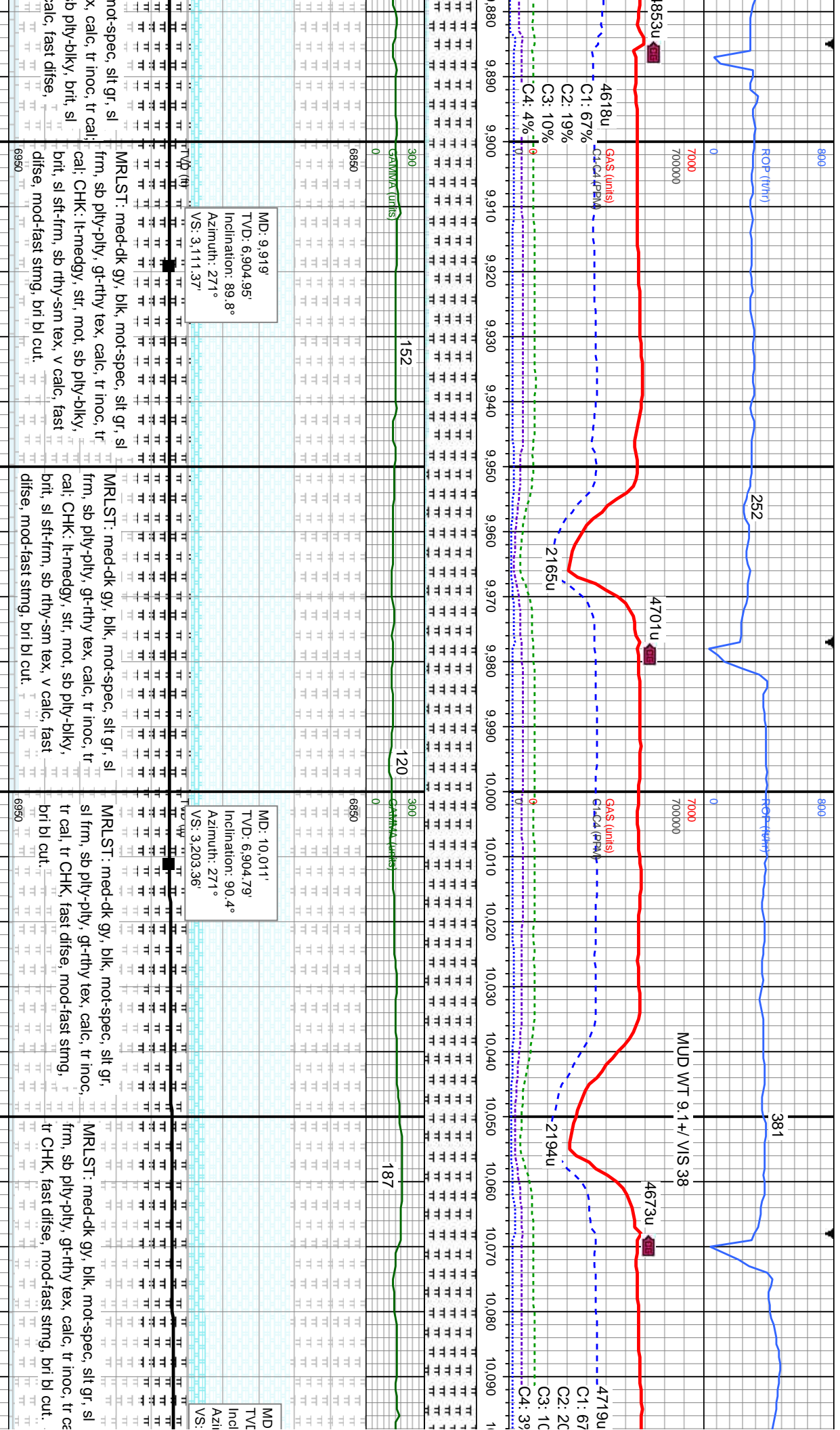
6850

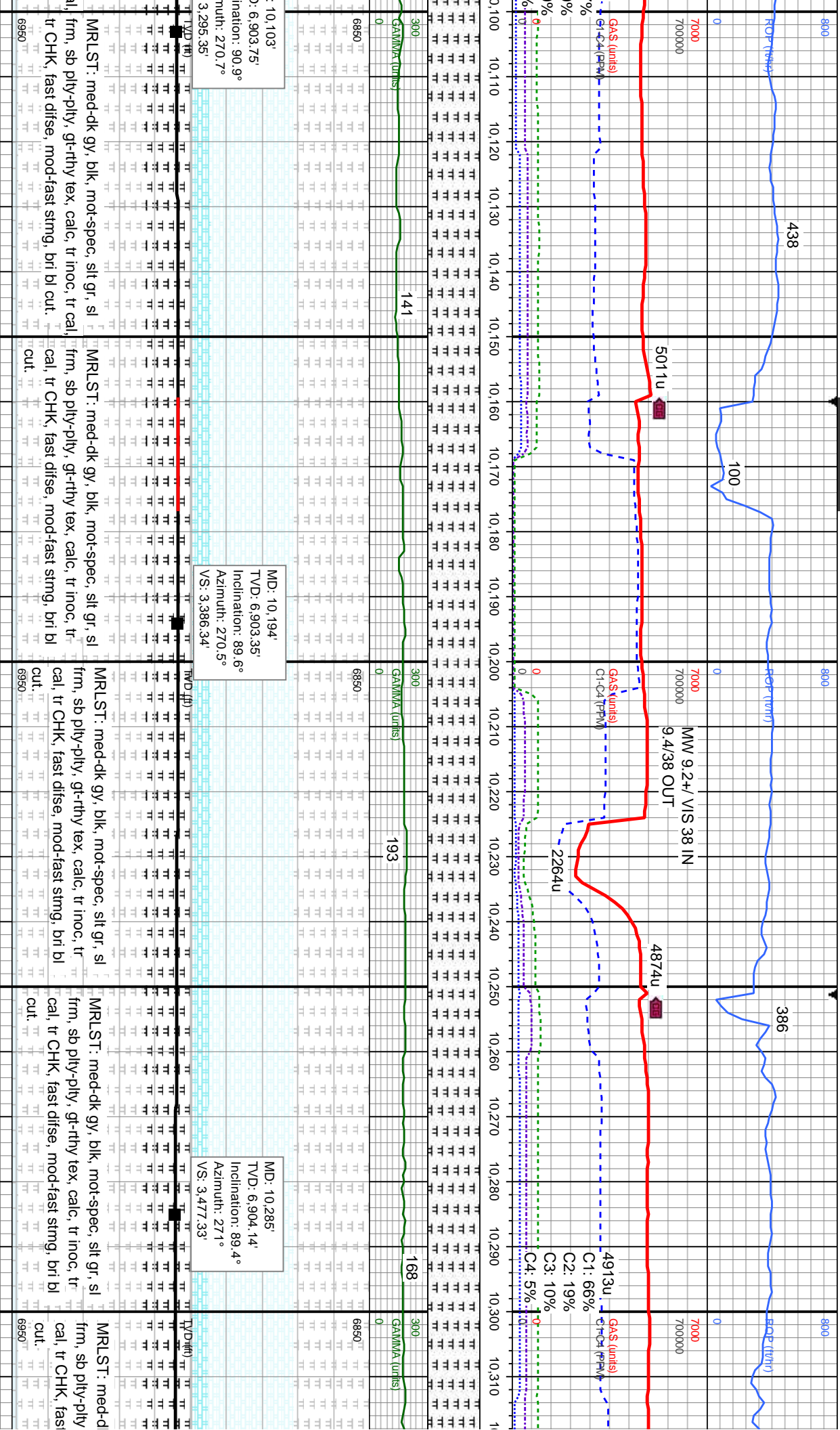
6950

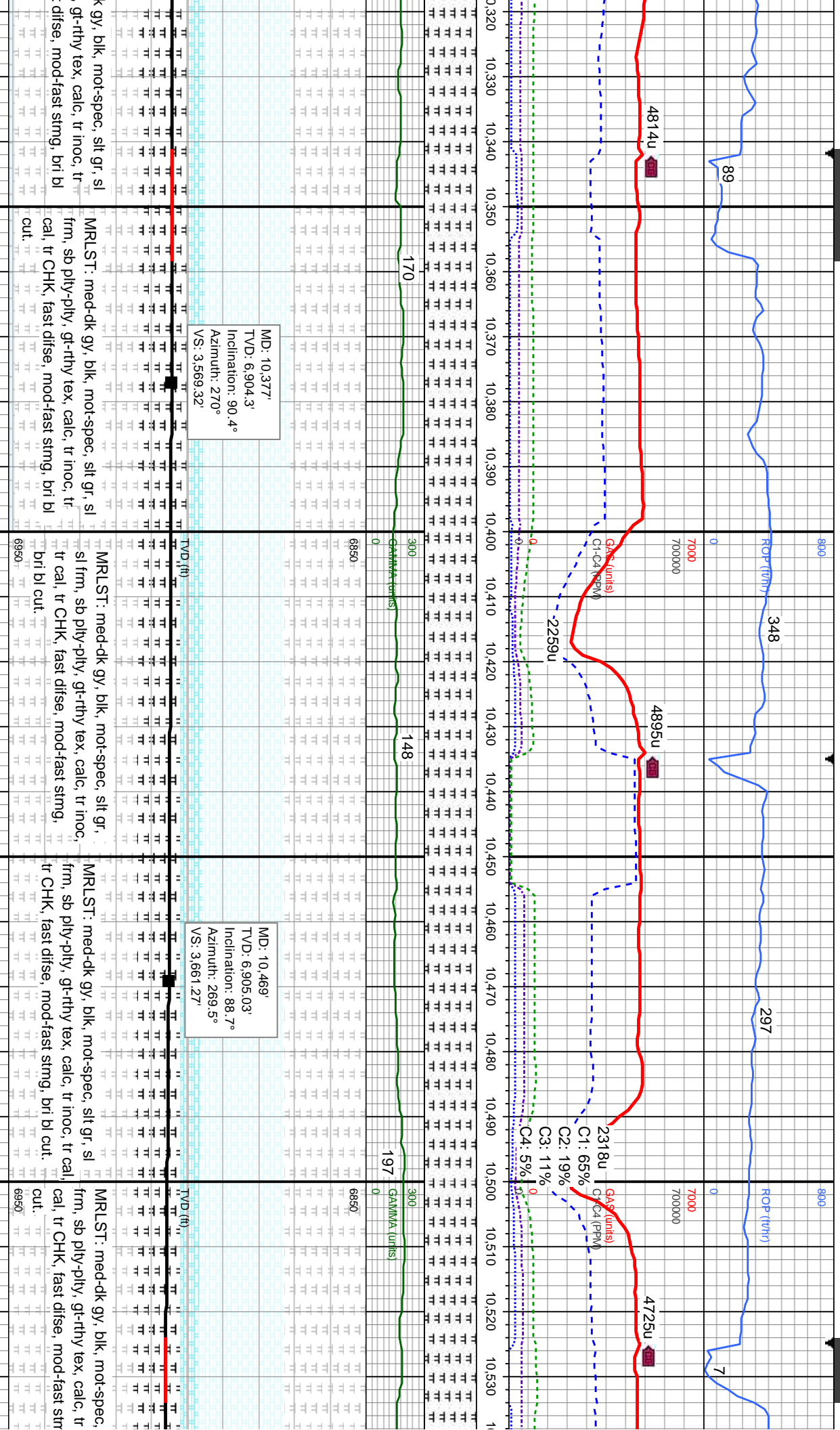


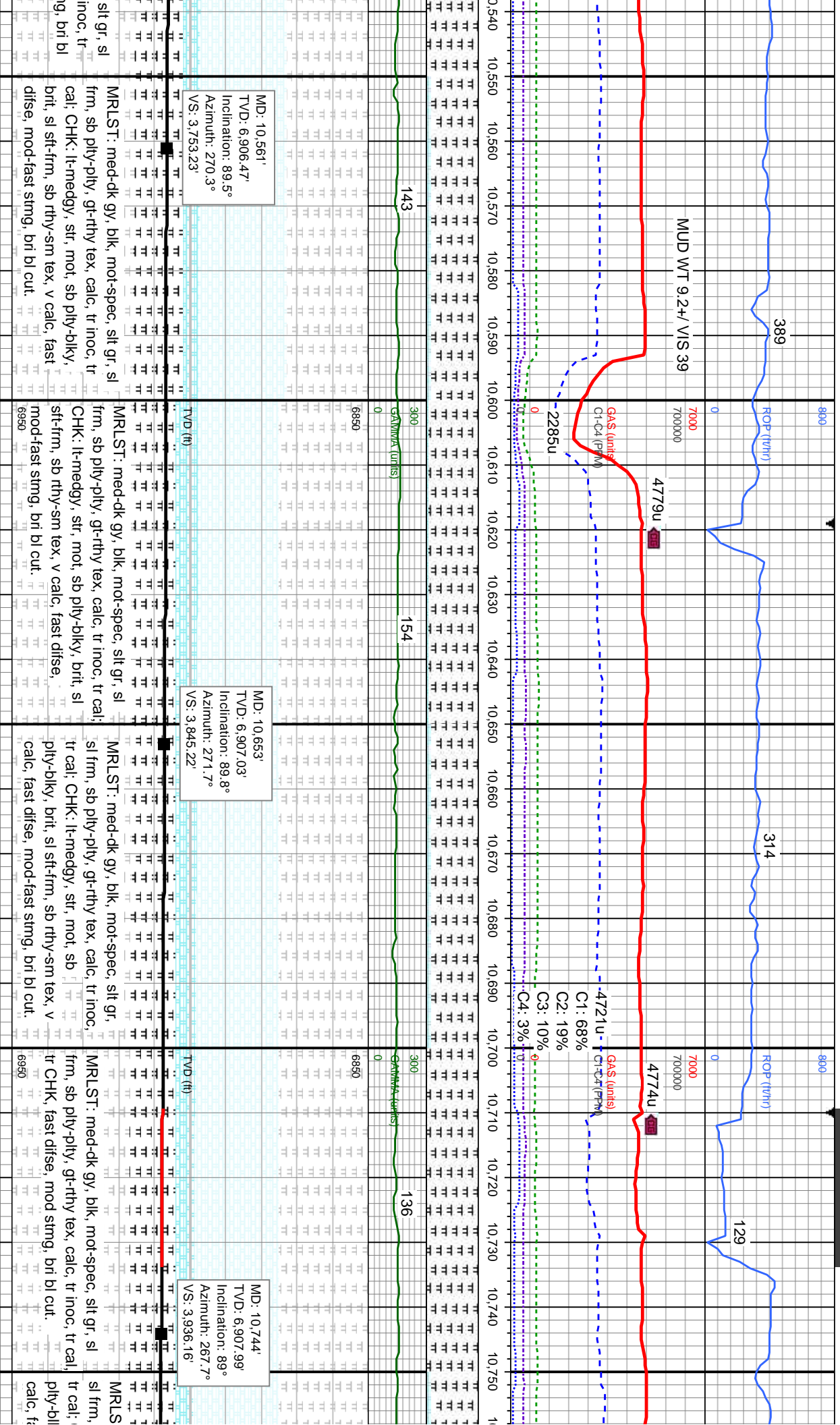


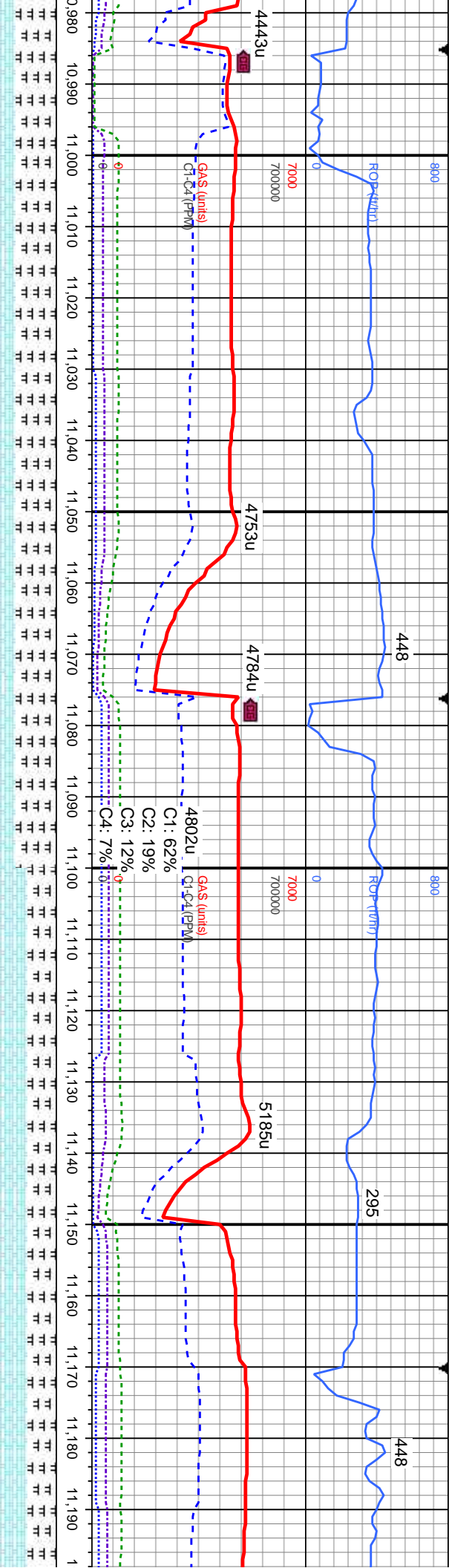










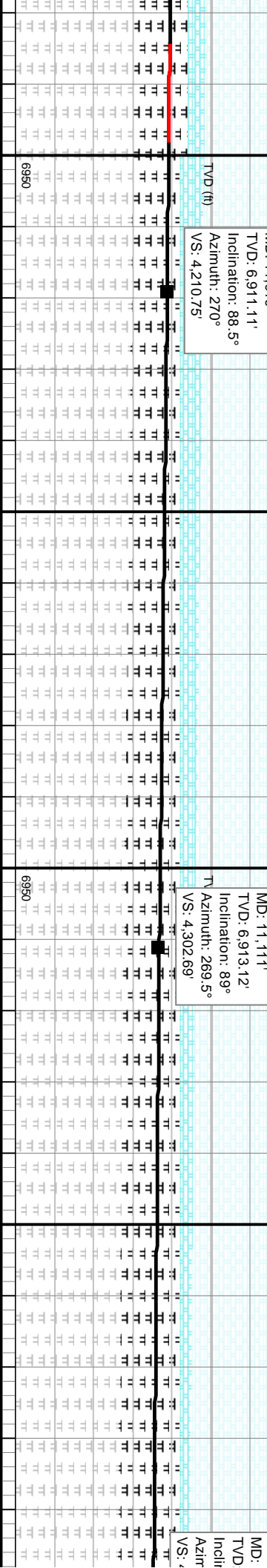


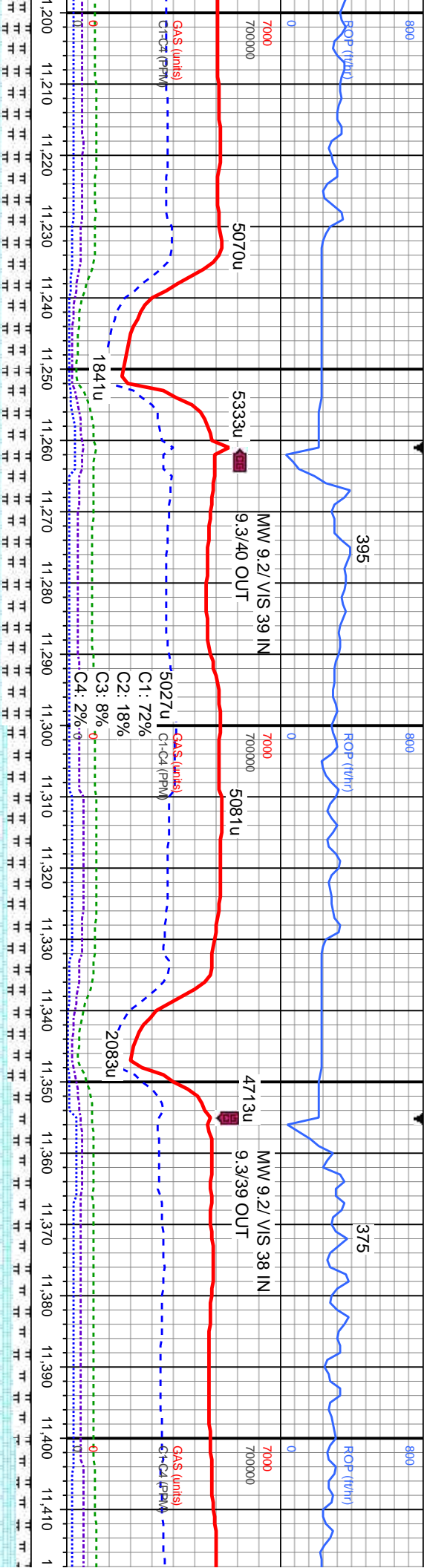
spec, sit gr, arg, sl
y, calc; CHK: med
bshngy, it bshngy ip, sb pty-biky, str & mot
ip, sb rthy-sm tex, brit, sl sft, v calc, tr pyr, fast
disse, mod-fast stmg, bri bl cut.

MD: 11,019'
TVD: 6,911.11'
Inclination: 88.5°
Azimuth: 270°
VS: 4,210.75'

MD: 11,111'
TVD: 6,913.12'
Inclination: 89°
Azimuth: 269.5°
VS: 4,302.69'

MD: 11,173'
TVD: 6,913.12'
Inclination: 89°
Azimuth: 269.5°
VS: 4,302.69'





MRSLT: med-dk gy, mot-spec, slt gr, arg, sl
frm, sb pty-sb blkly, gt tex, calc; CHK: med
bnshgy, lt bnshgy ip, sb pty-blkly, str & mot
ip, sb rthy-sm tex, brit, sl sft, v calc, tr pyr, fast
disse, mod-fast string, bri bl cut.

MRSLT: med-dk gy, mot-spec, slt gr, arg, sl
frm, sb pty-sb blkly, gt tex, calc; CHK: med
bnshgy, lt bnshgy ip, sb pty-blkly, str & mot
ip, sb rthy-sm tex, brit, sl sft, v calc, tr pyr, fast
disse, mod-fast string, bri bl cut.

MRSLT: med-dk gy, mot-spec, slt gr, arg, sl
frm, sb pty-sb blkly, gt tex, calc; CHK: med
bnshgy, lt bnshgy ip, sb pty-blkly, str & mot
ip, sb rthy-sm tex, brit, sl sft, v calc, tr pyr, fast
disse, mod string, bri bl cut.

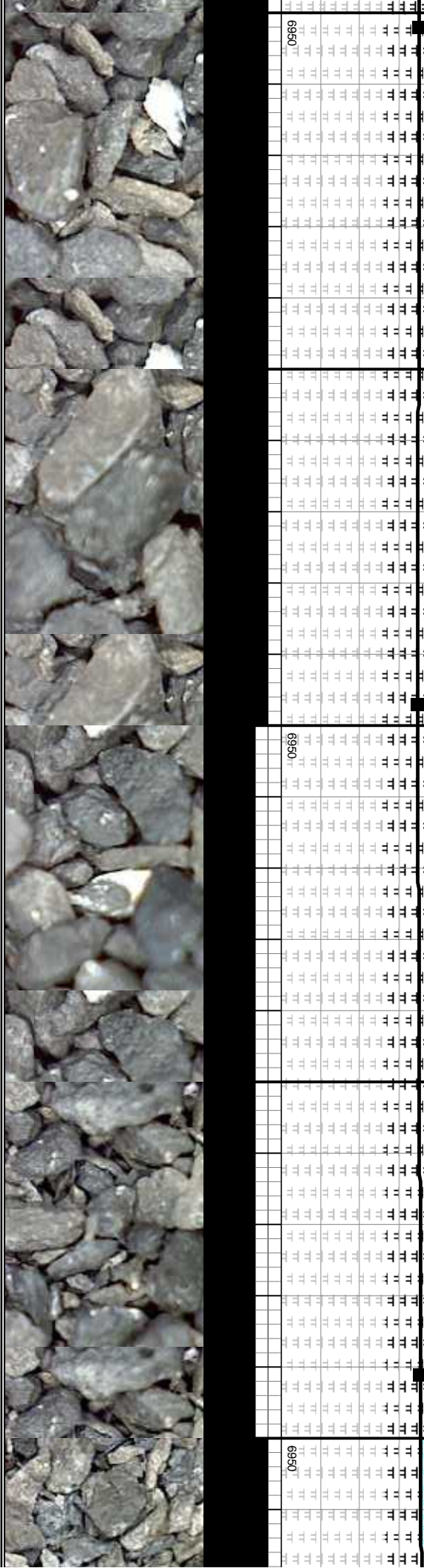
CHK: med bnshgy, lt bnshgy ip, sb pty-blkly,
str & mot ip, sb rthy-sm tex, brit, sl sft, v calc;
MRSLT: med-dk gy, mot-spec, slt gr, arg, sl
frm, sb pty-sb blkly, gt tex, calc, tr pyr, fast
disse, mod string, bri bl cut.

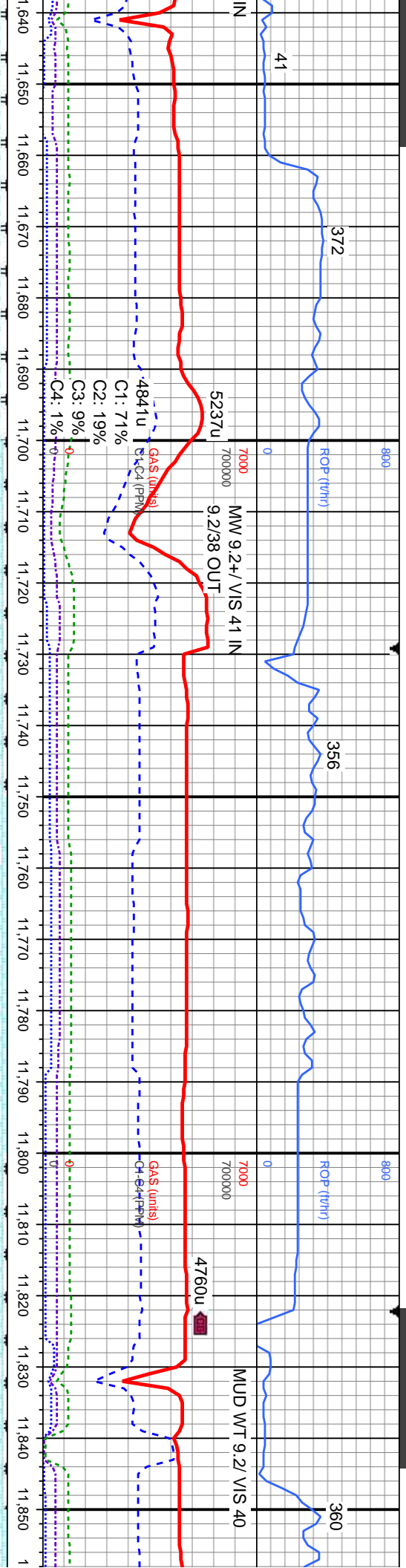
11,202'
6.914.63'
ation: 89.1°
uth: 269.8°
393.64'

MD: 11,297'
TVD: 6,915.13'
Inclination: 90.3°
Azimuth: 270.5°
VS: 4,488.61'

MD: 11,391'
TVD: 6,914.31'
Inclination: 90.7°
Azimuth: 270.5°
VS: 4,582.6'

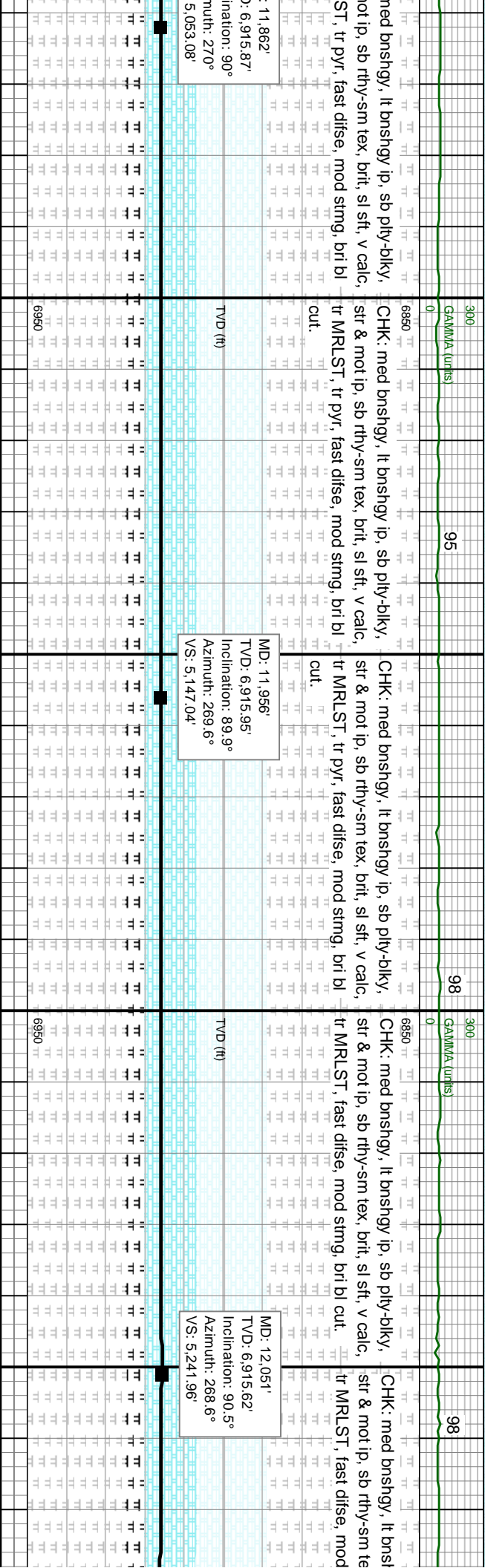
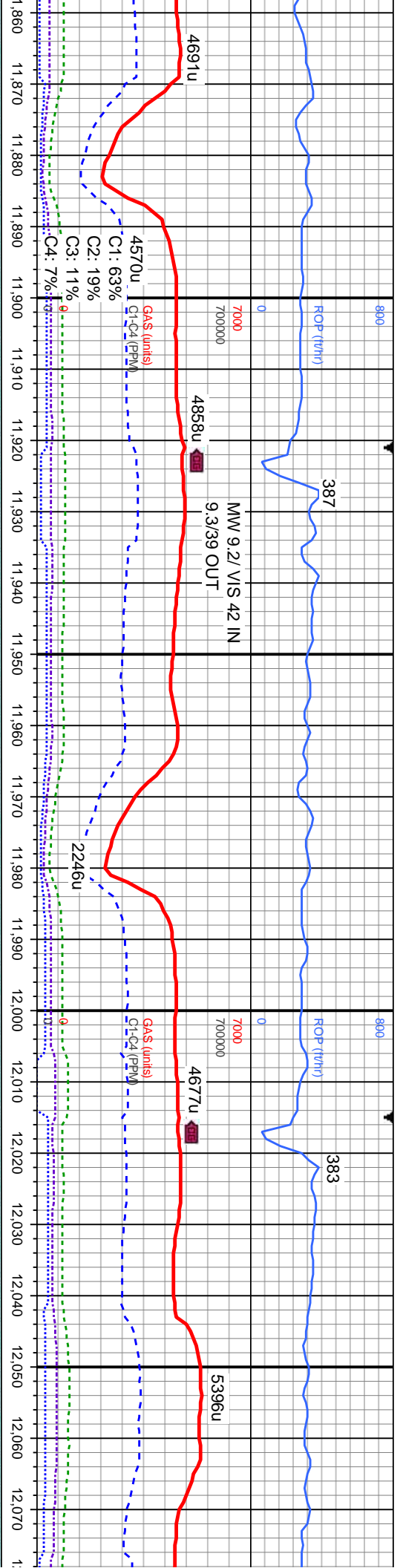
TVD (ft)





125	300	109	102	98
GAMMA (units)				
6850	6850	6850	6850	6850
CHK: med bnshgy - lt bnshgy, sb ply-blkly, str & mot ip, sb rthy-sm tex, brlt, sl sft, v calc; MRLST: med-dk gy, mot-spec, slt gr, arg, sl frm, sb ply-sb blkly, gt tex, calc, tr pyr, fast difse, mod-fast stmg, bri bl cut.				
MD: 11,674' TVD: 6,914.06' Inclination: 89° Azimuth: 268.2° VS: 4,865.29				
TVD (ft)				
6950	6950	6950	6950	6950
CHK: med bnshgy - lt bnshgy, sb ply-blkly, str & mot ip, sb rthy-sm tex, brlt, sl sft, v calc; MRLST: med-dk gy, mot-spec, slt gr, arg, sl frm, sb ply-sb blkly, gt tex, calc, tr pyr, fast difse, mod-fast stmg, bri bl cut.				
MD: 11,768' TVD: 6,915.38' Inclination: 89.4° Azimuth: 268.4° VS: 4,959.15'				
TVD (ft)				
6950	6950	6950	6950	6950
CHK: r rty-sm tex, brlt, sl sft, v calc; MRLST: med-dk gy, mot-spec, slt gr, arg, sl frm, sb ply-sb blkly, gt tex, calc, tr pyr, fast difse, mod-fast stmg, bri bl cut.				
MD: 11,768' TVD: 6,915.38' Inclination: 89.4° Azimuth: 268.4° VS: 4,959.15'				
TVD (ft)				
6950	6950	6950	6950	6950





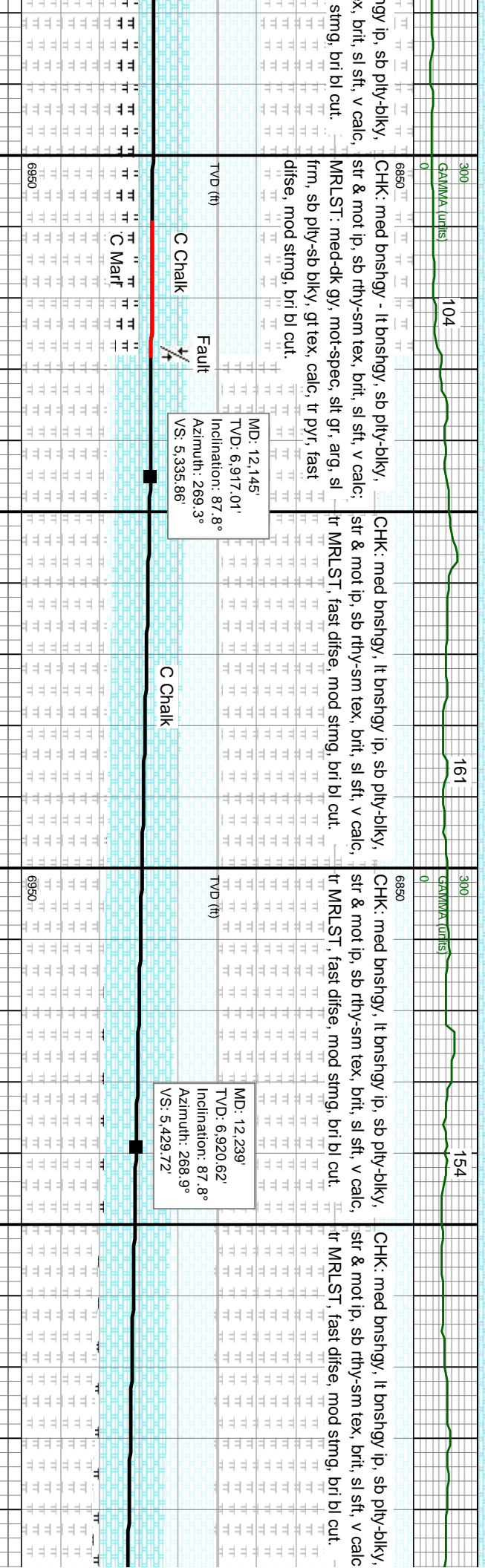
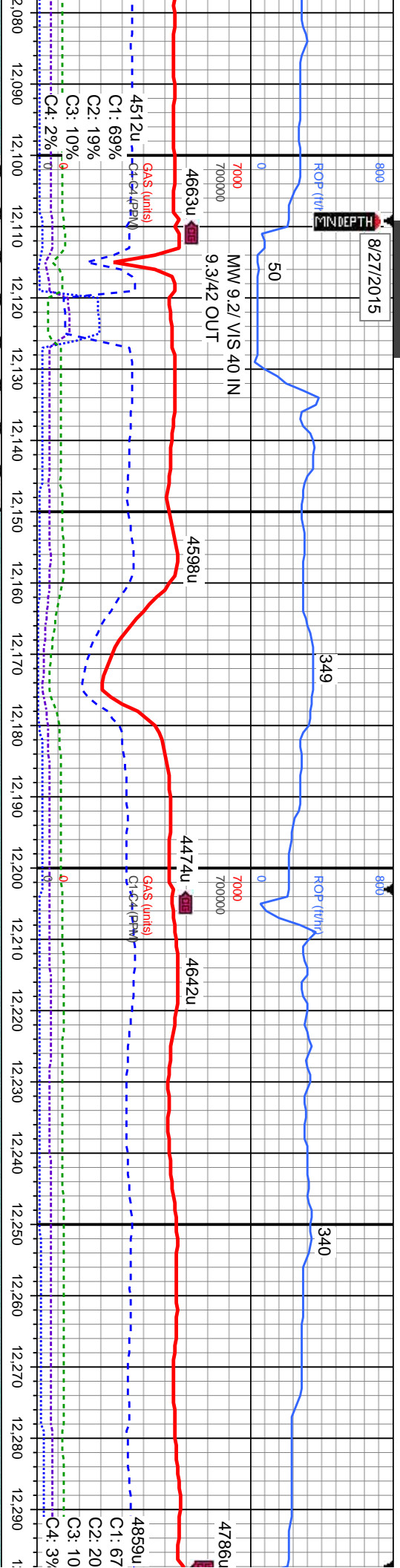
MD: 11,862'
TVD: 6,915.87'
Inclination: 90°
Azimuth: 270°
VS: 5,053.08'

MD: 11,956'
TVD: 6,915.95'
Inclination: 89.9°
Azimuth: 269.6°
VS: 5,147.04'

MD: 12,051'
TVD: 6,915.62'
Inclination: 90.5°
Azimuth: 268.6°
VS: 5,241.96'



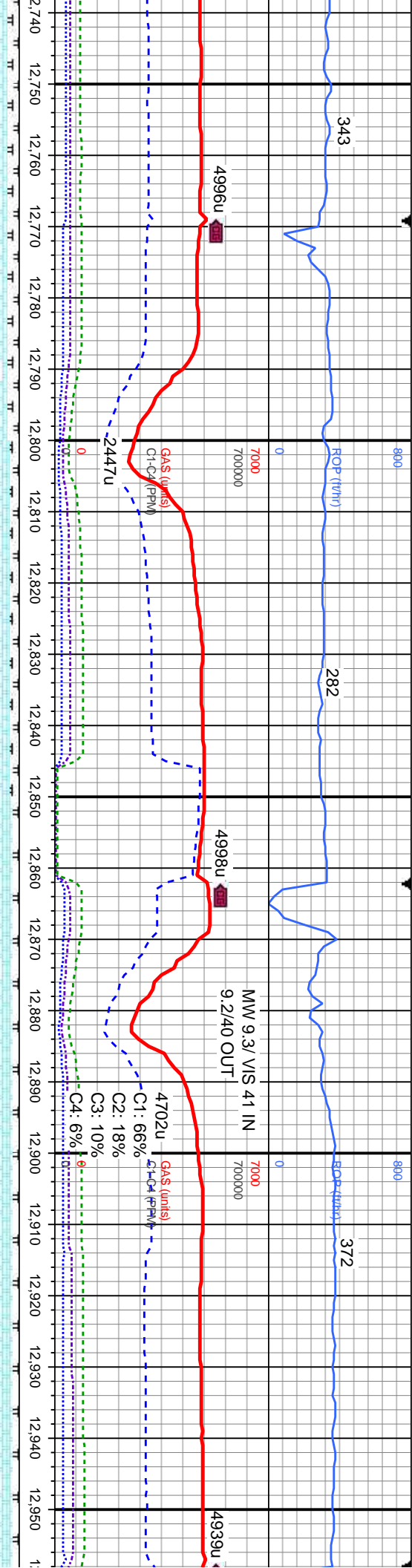
8/27/2015



MD: 12.145'
TVD: 6.917.01'
Inclination: 87.8°
Azimuth: 269.3°
VS: 5.335.86'

MD: 12.239'
TVD: 6.920.62'
Inclination: 87.8°
Azimuth: 268.9°
VS: 5.429.72'



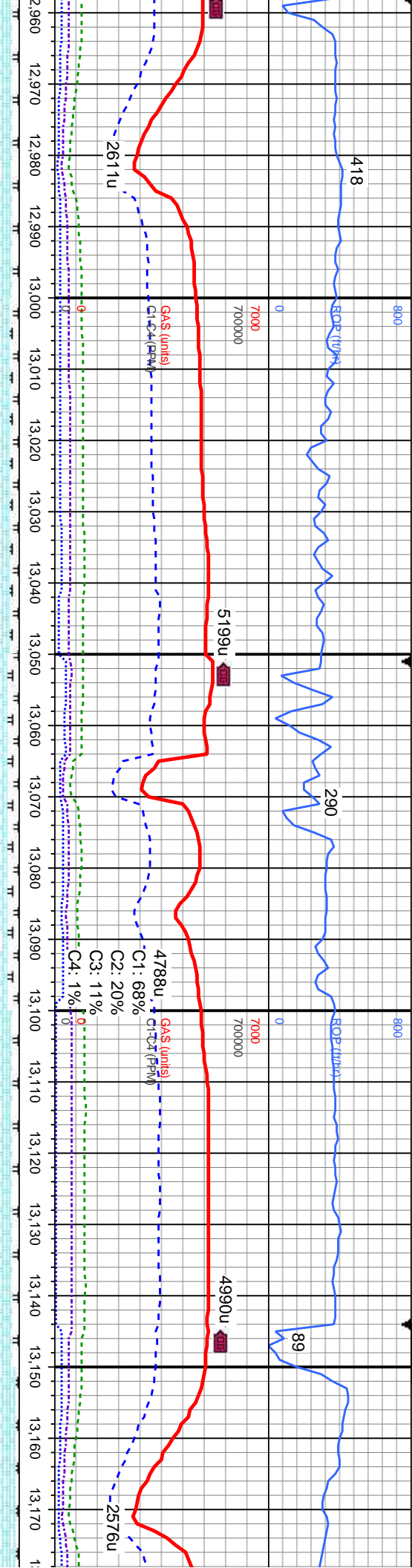


CHK: med bnshgy - lt bnshgy, sb pily-biky, str & mot ip, sb rthy-sm tex, brit, sl sft, v calc; MRLST: med-dk gy, mot-spec, slt gr, arg, sl frm, sb pily-sb biky, gt tex, calc, tr pyr, fast difse, mod-fast stmg, bri bl cut.	91	300	6850	CHK: med bnshgy - lt bnshgy, sb pily-biky, str & mot ip, sb rthy-sm tex, brit, sl sft, v calc; MRLST: med-dk gy, mot-spec, slt gr, arg, sl frm, sb pily-sb biky, gt tex, calc, tr pyr, fast difse, mod-fast stmg, bri bl cut.	116	300	6850	CHK: med bnshgy - lt bnshgy, sb pily-biky, str & mot ip, sb rthy-sm tex, brit, sl sft, v calc; MRLST: med-dk gy, mot-spec, slt gr, arg, sl frm, sb pily-sb biky, gt tex, calc, tr pyr, fast difse, mod-fast stmg, bri bl cut.	98	300	6850	CHK: med bnshgy - lt bnshgy, sb pily-biky, str & mot ip, sb rthy-sm tex, brit, sl sft, v calc; MRLST: med-dk gy, mot-spec, slt gr, arg, sl frm, sb pily-sb biky, gt tex, calc, tr pyr, fast difse, mod-fast stmg, bri bl cut.
		GAMMA (units)				GAMMA (units)				GAMMA (units)		
		0				0				0		

MD: 12.804'
TVD: 6,926.12'
Inclination: 90.7°
Azimuth: 268.8°
VS: 5,994.48'

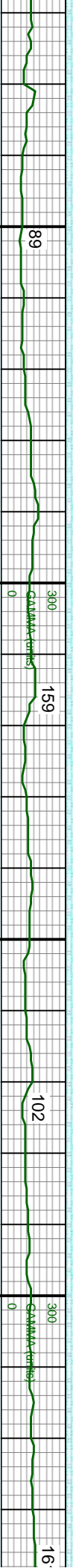
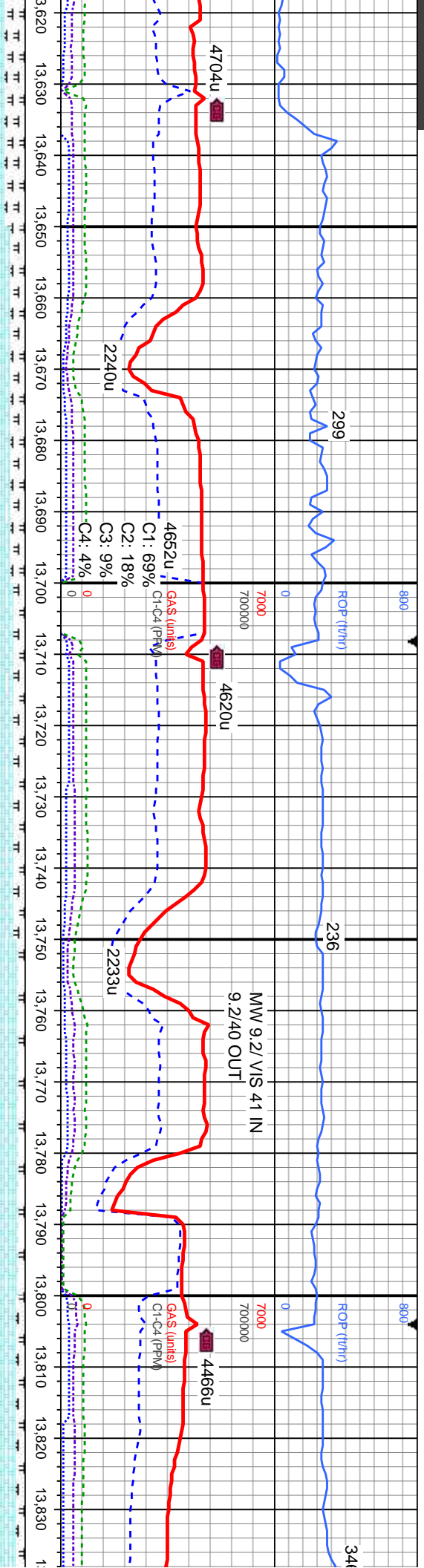
MD: 12.899'
TVD: 6,924.96'
Inclination: 90.7°
Azimuth: 269.6°
VS: 6,089.4'





med bnshgy - lt bnshgy, sb pily-blky, str & mot ip, sb rthy-sm tex, brit, sl sft, v calc; MRLST: med-dk gy, mot-spec, slt gr, arg, sl frm, sb pily-sb blky, gt tex, calc, tr pyr, fast difse, mod-fast stmg, bri bl cut.	6850	300	GAMMA (units)	107	MD: 12,993' TVD: 6,924.14' Inclination: 90.3° Azimuth: 269.6° VS: 6,183.36'
CHK: med bnshgy - lt bnshgy, sb pily-blky, str & mot ip, sb rthy-sm tex, brit, sl sft, v calc; MRLST: med-dk gy, mot-spec, slt gr, arg, sl frm, sb pily-sb blky, gt tex, calc, tr pyr, fast difse, mod-fast stmg, bri bl cut.	6850	300	GAMMA (units)	118	MD: 13,087' TVD: 6,923.65' Inclination: 90.3° Azimuth: 269.1° VS: 6,277.29'
CHK: lt-med gy, sb pily-blky, str & mot ip, sb rthy-sm tex, brit, sl sft, v calc; MRLST: med-dk gy, mot-spec, slt gr, arg, sl frm, sb pily-sb blky, gt tex, calc, tr bent, fast difse, mod-fast stmg, bri bl cut.	6850	300	GAMMA (units)	79	MD: 13,087' TVD: 6,923.65' Inclination: 90.3° Azimuth: 269.1° VS: 6,277.29'
CHK: lt-med gy, sb pily-blky, str & mot ip, sb rthy-sm tex, brit, sl sft, v calc; MRLST: med-dk gy, mot-spec, slt gr, arg, sl frm, sb pily-sb blky, gt tex, calc, tr bent, fast difse, mod-fast stmg, bri bl cut.	6850	300	GAMMA (units)	79	MD: 13,087' TVD: 6,923.65' Inclination: 90.3° Azimuth: 269.1° VS: 6,277.29'





300
159
0

102
0

300
0

16

gy - lt bnshgy, sb pty-blky, str & mot ip, sb rthy-sm tex, brit, sl sft, v calc; MRLST: med-dk gy, mot-spec, slt gr, arg, sl frm, sb pty-sb blky, gt tex, calc, tr pyr, tr bent, tr inoc, fast difse, mod-fast stmg, bri bl cut.

CHK: med bnshgy - lt bnshgy, sb pty-blky, str & mot ip, sb rthy-sm tex, brit, sl sft, v calc; MRLST: med-dk gy, mot-spec, slt gr, arg, sl frm, sb pty-sb blky, gt tex, calc, tr pyr, tr bent, tr inoc, fast difse, mod-fast stmg, bri bl cut.

MD: 13,651'
TVD: 6,920.37'
Inclination: 88.7°
Azimuth: 268.9°
VS: 6,840.91'

MD: 13,745'
TVD: 6,922.01'
Inclination: 89.3°
Azimuth: 268.6°
VS: 6,934.79'

MD: 13,745'
TVD: 6,922.01'
Inclination: 89.3°
Azimuth: 268.6°
VS: 6,934.79'

gy - lt bnshgy, sb pty-blky, str & mot ip, sb rthy-sm tex, brit, sl sft, v calc; MRLST: med-dk gy, mot-spec, slt gr, arg, sl frm, sb pty-sb blky, gt tex, calc, tr pyr, tr bent, tr inoc, fast difse, mod-fast stmg, bri bl cut.

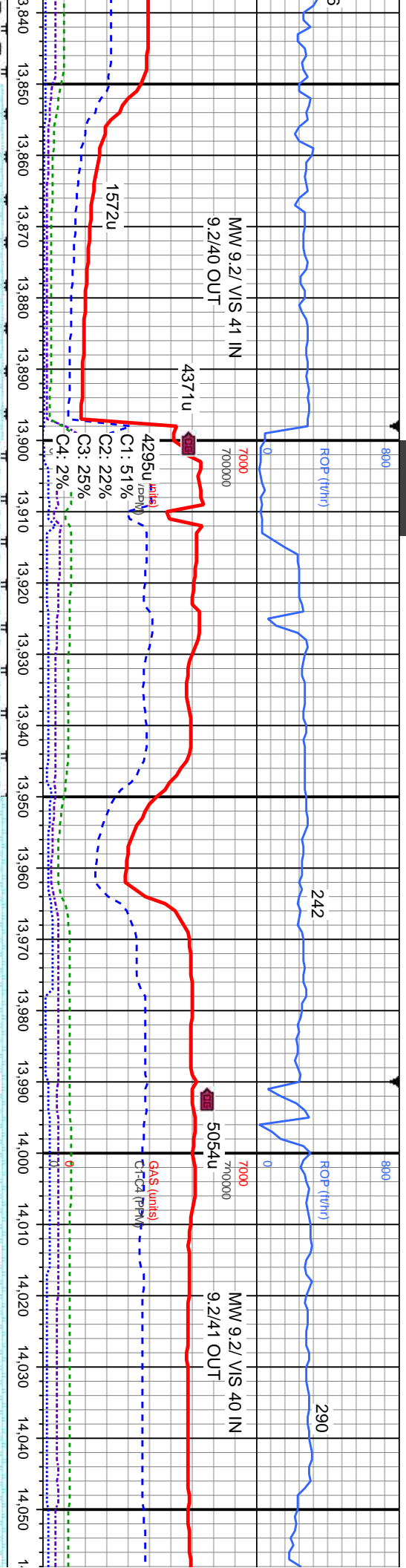
CHK: med bnshgy - lt bnshgy, sb pty-blky, str & mot ip, sb rthy-sm tex, brit, sl sft, v calc; MRLST: med-dk gy, mot-spec, slt gr, arg, sl frm, sb pty-sb blky, gt tex, calc, tr pyr, tr bent, tr inoc, fast difse, mod-fast stmg, bri bl cut.

TVD (ft)

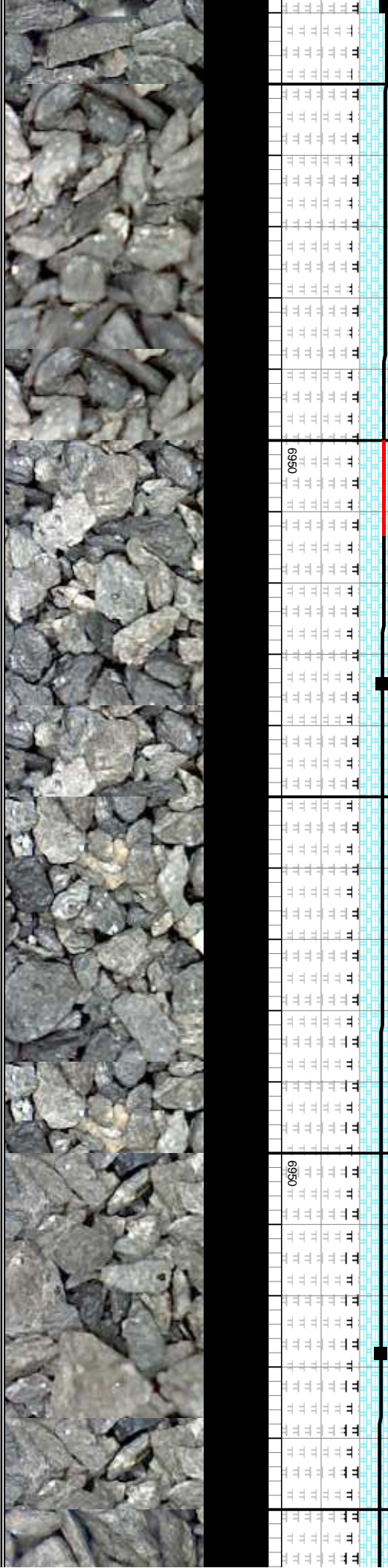
TVD (ft)

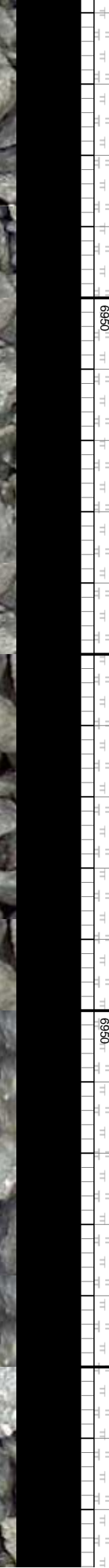
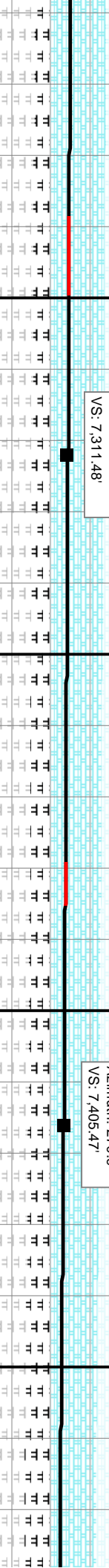
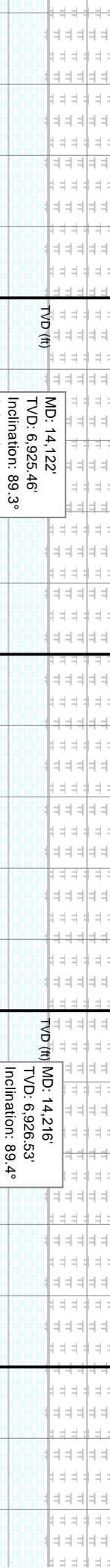
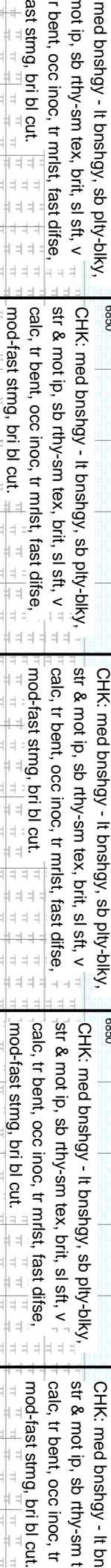
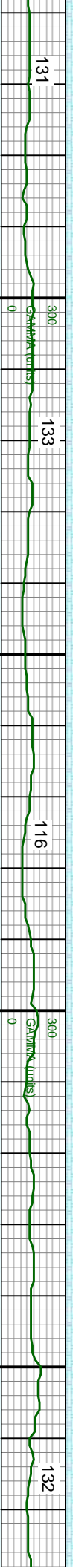
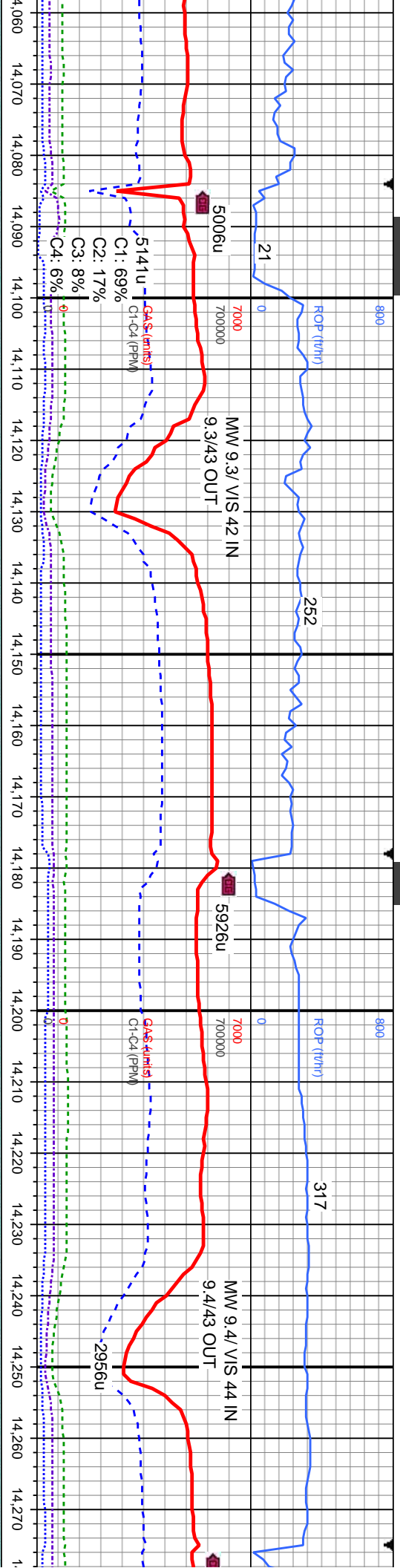
TVD (ft)

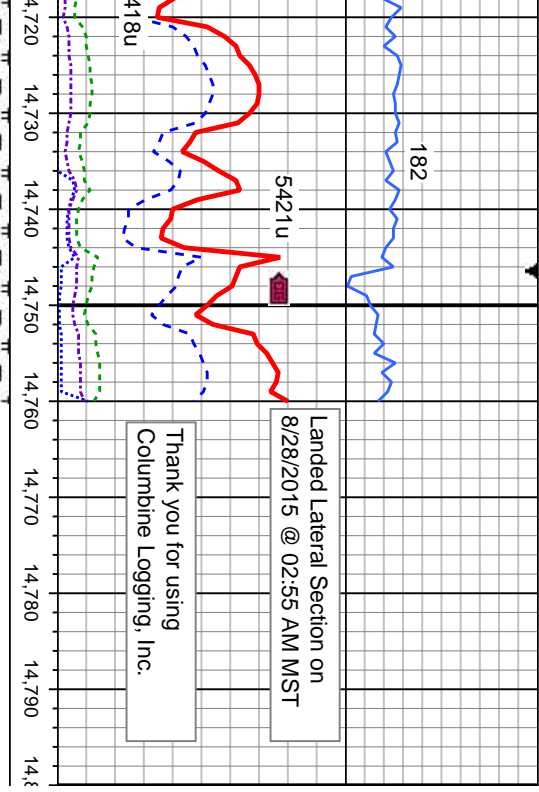




134	6850	126	102	6850
300	300	300	300	300
GAMMA (units)	GAMMA (units)	GAMMA (units)	GAMMA (units)	GAMMA (units)
0	0	0	0	0
CHK: med bnshgy - lt bnshgy, sb ply-bkly, str & mot ip, sb rthy-sm tex, brit, sl sft, v calc; MRLST: med-dk gy, mot-spec, sl silver lsrt, slt gr, arg, sl frm, sb ply-sb bkly, gf tex, calc, tr bent, occ inoc, fast difse, mod-fast stmg, bri bl cut.	CHK: med bnshgy - lt bnshgy, sb ply-bkly, str & mot ip, sb rthy-sm tex, brit, sl sft, v calc; MRLST: med-dk gy, mot-spec, sl silver lsrt, slt gr, arg, sl frm, sb ply-sb bkly, gf tex, calc, tr bent, occ inoc, fast difse, mod-fast stmg, bri bl cut.	CHK: med bnshgy - lt bnshgy, sb ply-bkly, str & mot ip, sb rthy-sm tex, brit, sl sft, v calc; MRLST: med-dk gy, mot-spec, sl silver lsrt, slt gr, arg, sl frm, sb ply-sb bkly, gf tex, calc, tr bent, occ inoc, fast difse, mod-fast stmg, bri bl cut.	CHK: med bnshgy - lt bnshgy, sb ply-bkly, str & mot ip, sb rthy-sm tex, brit, sl sft, v calc; MRLST: med-dk gy, mot-spec, sl silver lsrt, slt gr, arg, sl frm, sb ply-sb bkly, gf tex, calc, tr bent, occ inoc, fast difse, mod-fast stmg, bri bl cut.	CHK: med bnshgy - lt bnshgy, sb ply-bkly, str & mot ip, sb rthy-sm tex, brit, sl sft, v calc; MRLST: med-dk gy, mot-spec, sl silver lsrt, slt gr, arg, sl frm, sb ply-sb bkly, gf tex, calc, tr bent, occ inoc, fast difse, mod-fast stmg, bri bl cut.
MD: 13.934' TVD: 6,924.07' Inclination: 89.3° Azimuth: 269.3° VS: 7.123.55'	MD: 13.934' TVD: 6,924.07' Inclination: 89.3° Azimuth: 269.3° VS: 7.123.55'	MD: 13.934' TVD: 6,924.07' Inclination: 89.3° Azimuth: 269.3° VS: 7.123.55'	MD: 13.934' TVD: 6,924.07' Inclination: 89.3° Azimuth: 269.3° VS: 7.123.55'	MD: 14.028' TVD: 6,924.64' Inclination: 89.7° Azimuth: 269.8° VS: 7.217.5'







gy - lt bnshgy, sb ply-biky,
rthy-sm tex, brit, sl sft, v
ed-dk gy, mot-spec, sl
arg, sl frm, sb ply-sb biky,
vr, tr bent, occ inoc, fast
stimg, bri bl cut.

PROJECTION TO BIT

MD: 14,760'
TVD: 6,924.64'
Inclination: 91.5°
Azimuth: 270.9°
VS: 7,949.33'

