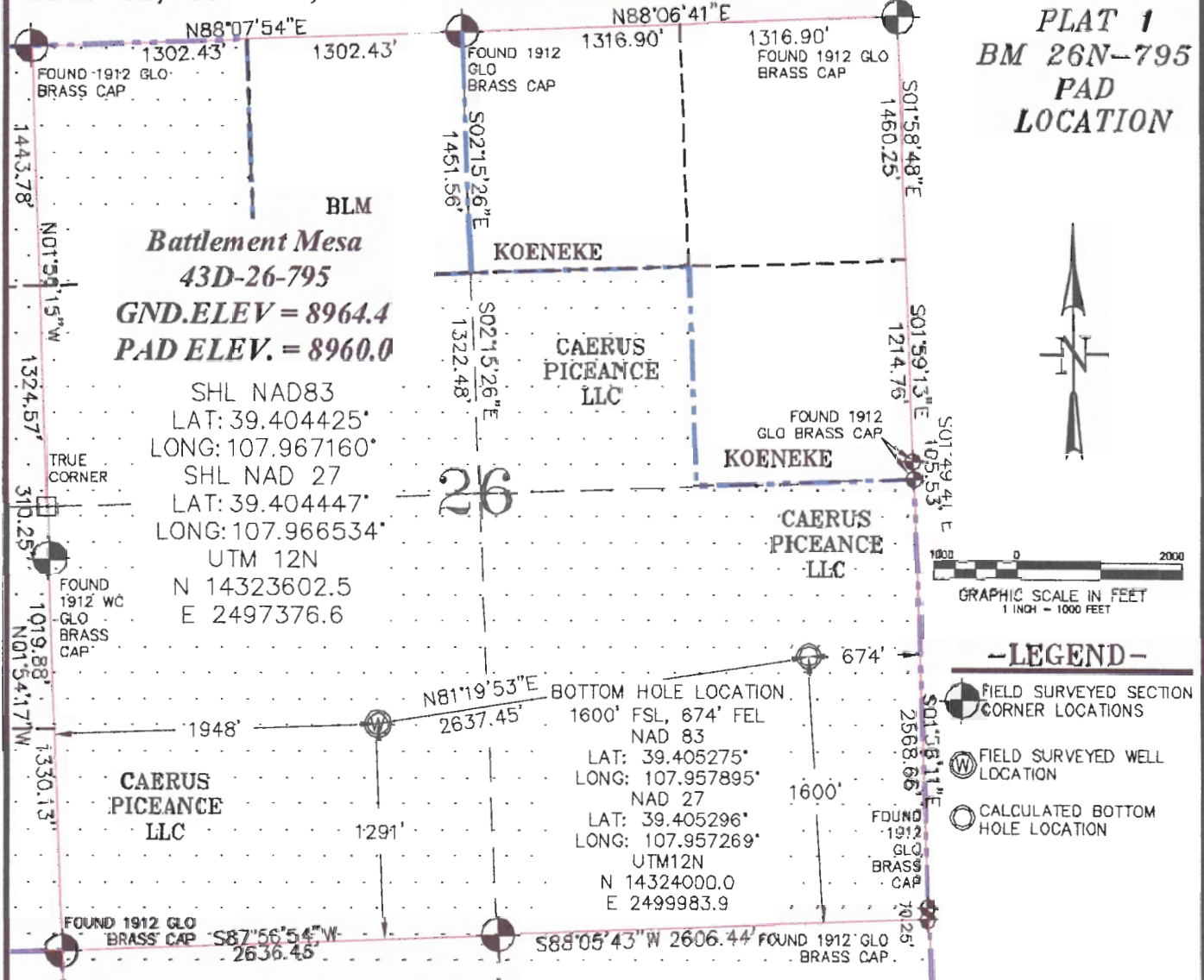


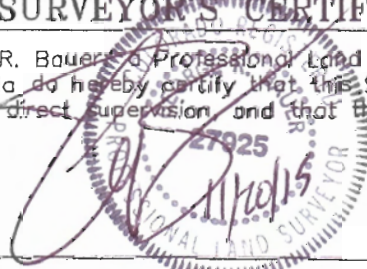
PLAT 1
BM 26N-795
PAD
LOCATION



THIS WELL LOCATION PLAT WAS PREPARED FOR CAERUS PICEANCE LLC TO LOCATE THE BATTLEMENT MESA #43D-26-795 WELL, 1291 FEET FROM THE SOUTH LINE AND 1948 FEET FROM THE WEST LINE IN THE SW1/4 OF SECTION 26, T. 7 S., R. 95 W. OF THE 6TH P.M. GARFIELD COUNTY, COLORADO.

SURVEYOR'S CERTIFICATE

I, George R. Bauer, a Professional Land Surveyor in the State of Colorado do hereby certify that this Survey was made under my direct supervision and that this Plat represents said Survey.



REFERENCE NOTES

- 1) T. 7 S., R. 95 W., 6TH P.M. GLO PLAT.
- 2) U.S.G.S. QUAD: PARACHUTE, CO
- 3) ELEVATIONS BASED ON N.A.V.D. 1988 LIDAR
BASED CONTROL PT CP MON 8
- 4) LATITUDES AND LONGITUDES ARE BASED ON
NAD 83, COLORADO CENTRAL ZONE.
- 5) GPS OPERATOR ROBERT WOOD, OBSERVED
A POOP OF 1.B.
- 6) ALL GPS OBSERVATIONS ARE IN COMPLIANCE
WITH COGCC RULE NO. 215.
- 7) SURFACE AND BOTTOM HOLE LOCATIONS
ARE MEASURED 90° FROM SECTION LINES.

Caerus Piceance LLC
CAERUS
THE ENGINEER LLC



WELL LOCATION PLAT

CONSTRUCTION SURVEYS, INC.
0012 SUNRISE BLVD. SALT, CO
81652 (970)876-5753

SURVEY BY: REW 10/13/15

PDOF: 1.8

DRAWN BY:REW 11/19/15

DWG: CAERUS\BM26N-795

REVISÉ: