

October 30, 2015



410 17th Street, Suite 1400
Denver, CO 80202
(720) 440-6100 phone
(720) 305-0804 fax

Bonanzacrk.com

Colorado Oil and Gas Conservation Commission
The Chancery Building
1120 Lincoln Street, Suite 801
Denver, CO 80203
Attn: Matthew Lepore, Director

Re: Notice of 318A.a.(4)D. Proposed Niobrara Horizontal Wellbore Spacing Unit

STATE ANTELOPE 24-21-16XRLNC

SHL: SESW (389' FSL, 1817' FWL) Section 21-T5N-R62W, Weld County, CO

Top of Production: (631' FNL, 2012' FWL) Section 21-T5N-R62W, Weld County, CO

Bottom of Production: (470' FNL, 2045' FWL) Section 16-T5N-R62W, Weld County, CO

Director Lepore:

Bonanza Creek Energy Operating Company LLC ("Bonanza") intends to permit, drill and operate the referenced Niobrara Horizontal Well. As defined by Colorado Oil and Gas Conservation Commission (COGCC) Rule 318A.a.(4)D., Bonanza proposes the following wellbore spacing unit:

E/2W/2, Section 21-T5N-R62W, Weld County, CO – containing 160 acres more or less

E/2W/2, Section 16-T5N-R62W, Weld County, CO – containing 160 acres more or less

Bonanza is the sole mineral lease holder in the proposed spacing unit, and no mineral owner notifications were required.

Bonanza respectfully requests that you review the enclosed wellbore spacing unit documentation and approve the referenced APD.

Please do not hesitate to call or email me at (303) 803-1718 or Jvigil@Bonanzacrk.com, should you have any questions pertaining to this matter.

Thank you for your cooperation.

Sincerely,

A handwritten signature in blue ink that reads 'Julie L. Vigil'.

Julie L. Vigil

Sr. Regulatory Specialist

BONANZA CREEK ENERGY OPERATING COMPANY, LLC

CORPORATE OFFICE
410 17th Street, Suite 1400
Denver, CO 80202
Office: (720)440-6100

MAGNOLIA OFFICE
50 Columbia 300
Magnolia, AR 71753
Office: (870) 235-0400

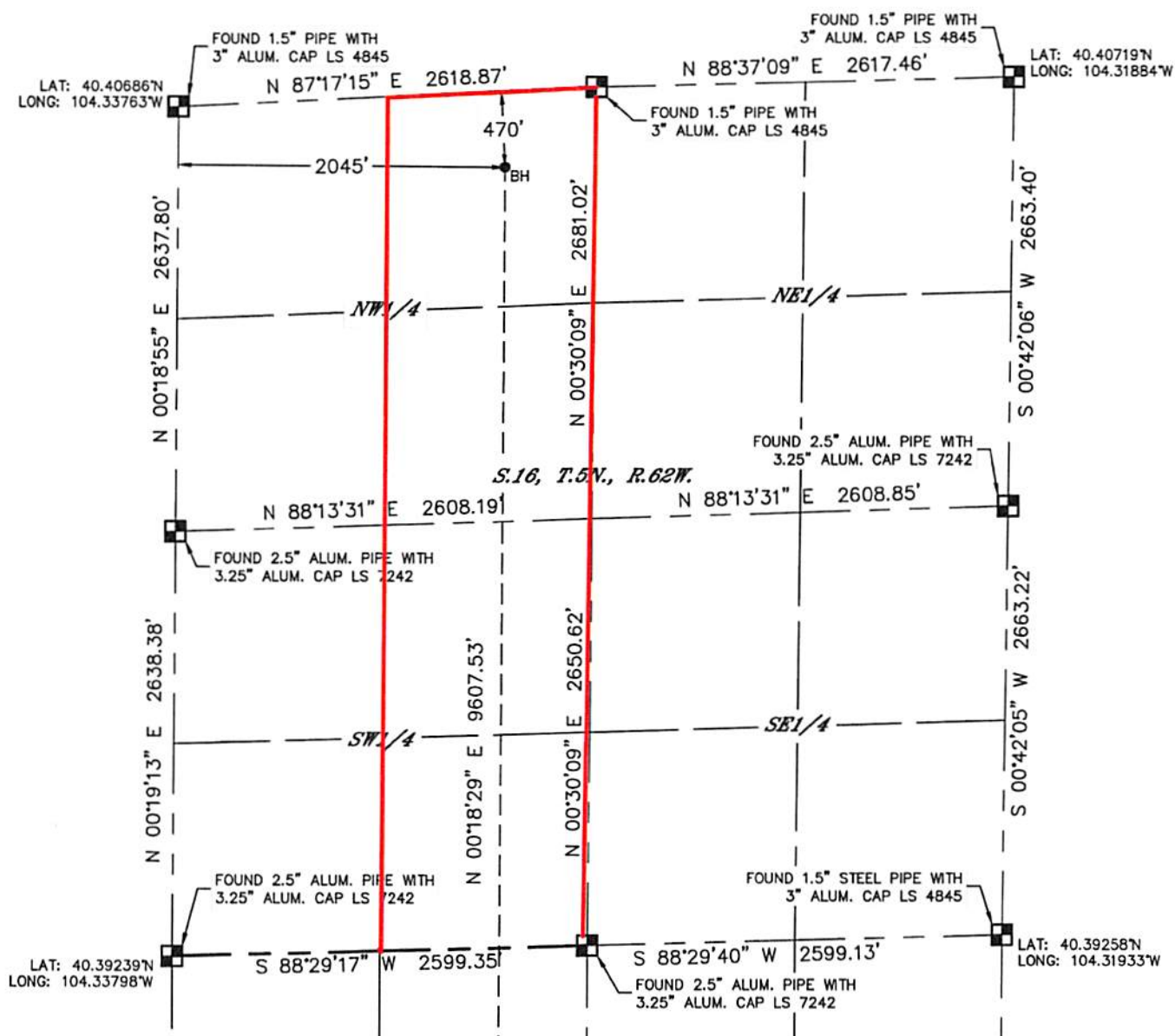
Antelope 24-21-16XRLNC
E2W/2 Sec 21-T5N-R62W 6th PM
E2W/2 Sec 16-T5N-R62W 6th PM
Weld County, Colorado

Lat40°, Inc. 6250 W. 10th Street, Unit 2, Greeley, CO 970-515-5294

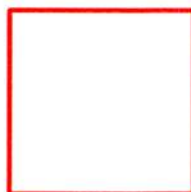
WELL LOCATION CERTIFICATE

STATE ANTELOPE 24-21-16XRLNC

SECTION: 21
TOWNSHIP: 5N
RANGE: 62W
6TH. P.M.
WELD COUNTY, CO



BONANZA CREEK



Wellbore Spacing Unit Outline



Wellbore Spacing Unit Map

October 12, 2015 JLV

Antelope 24-21-16XRLNC
E2W/2 Sec 21-T5N-R62W 6th PM
E2W/2 Sec 16-T5N-R62W 6th PM
Weld County, Colorado