

BONANZA CREEK ENERGY INC.

WELD COUNTY, COLORADO (NAD 83)

SE SW SEC. 21 T5N R62W 6th P.M.

STATE ANTELOPE 24-21-16XRLNC

ORIGINAL WELLBORE

13 October, 2015

Plan: PROPOSAL #1





Project: WELD COUNTY, COLORADO (NAD 83)
Site: SE SW SEC. 21 T5N R62W 6th P.M.
Well: STATE ANTELOPE 24-21-16XRLNC
Wellbore: ORIGINAL WELLBORE
Design: PROPOSAL #1

ANNOTATIONS									
TVD	MD	Inc	Azi	+N/-S	+E/-W	VSection	Dep	Annotation	
2000.0	2000.0	0.00	0.00	0.0	0.0	0.0	0.0	START NUDGE (2°/100ft BUR)	
2595.7	2600.1	12.00	152.58	-55.6	28.8	-54.4	62.6	EOB TO 12° INC	
3988.0	4023.5	12.00	152.58	-318.3	165.2	-311.7	358.6	END OF TANGENT	
4583.7	4623.6	0.00	0.00	-373.9	194.0	-366.1	421.2	EOD TO VERTICAL	
5862.7	5902.6	0.00	0.00	-373.9	194.0	-366.1	421.2	KOP (12°/100ft BUR)	
6323.9	6527.6	75.00	0.42	-20.0	196.6	-12.4	775.1	START OF TANGENT	
6349.8	6627.6	75.00	0.42	76.6	197.3	84.1	871.7	END OF TANGENT	
6366.0	6752.6	90.00	0.42	200.1	198.2	207.6	995.3	7" ICP - STATE ANTELOPE 24-21-16XRLNC	
6366.0	11653.6	90.00	0.42	5101.0	234.1	5106.2	5896.3	MID-PNT - ~1991ft FWL of Sec 16	
6366.0	11720.5	90.00	1.76	5167.9	235.4	5173.1	5963.2	EOT TO 1.76° AZ	
6366.0	16303.7	90.00	1.76	9749.0	376.0	9756.2	10546.5	BHL - STATE ANTELOPE 24-21-16XRLNC	

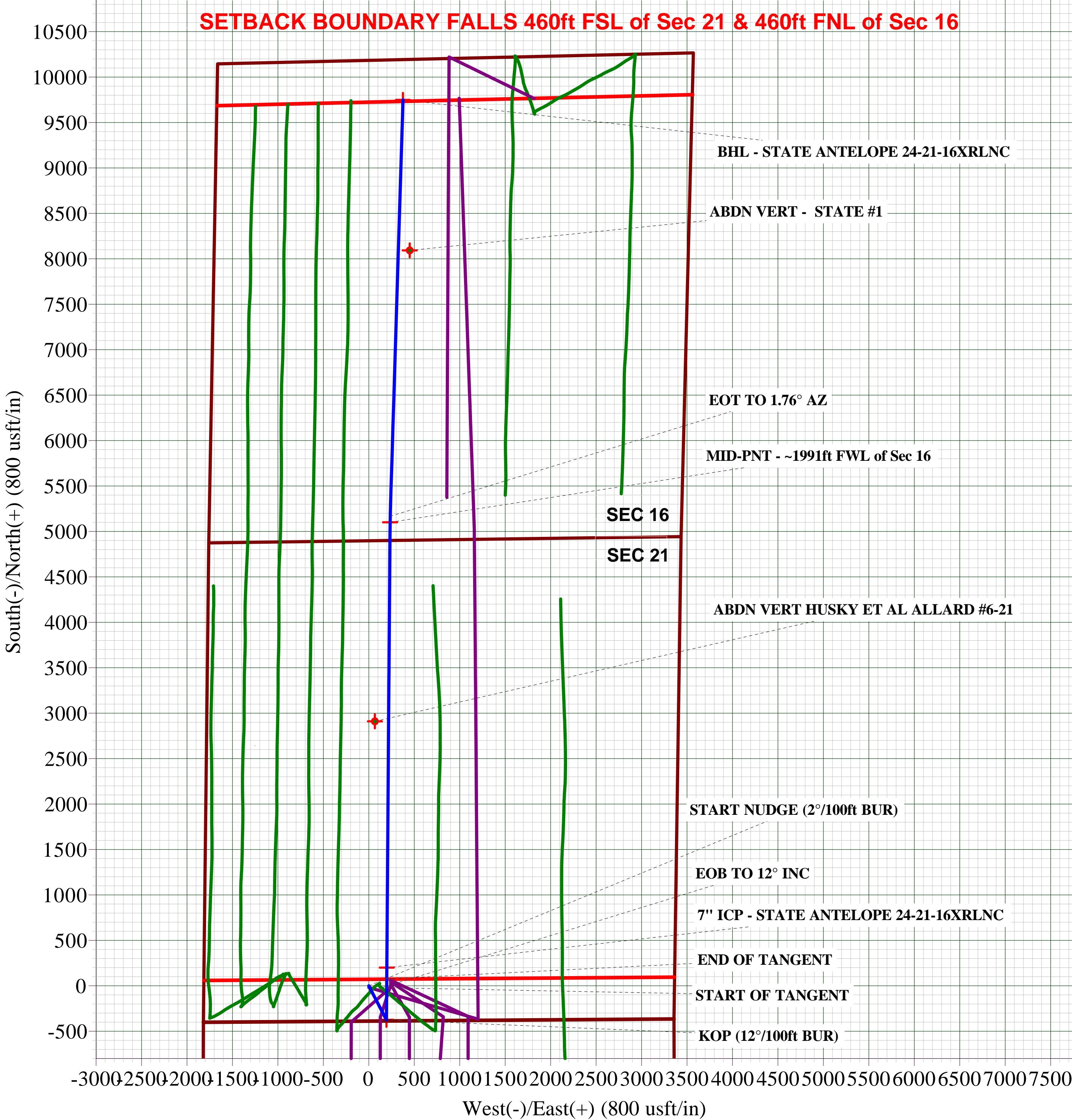
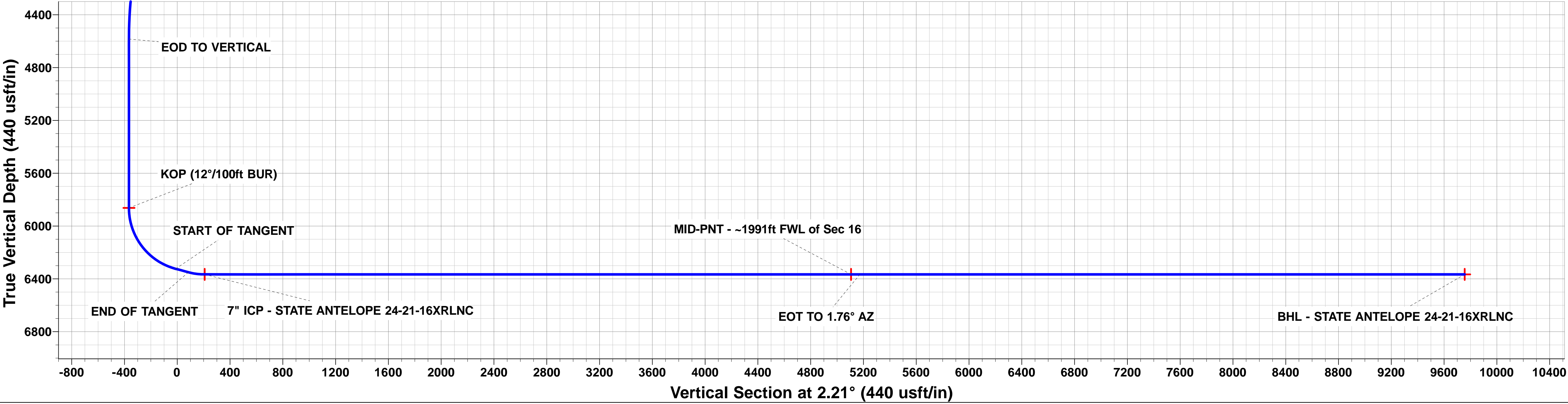
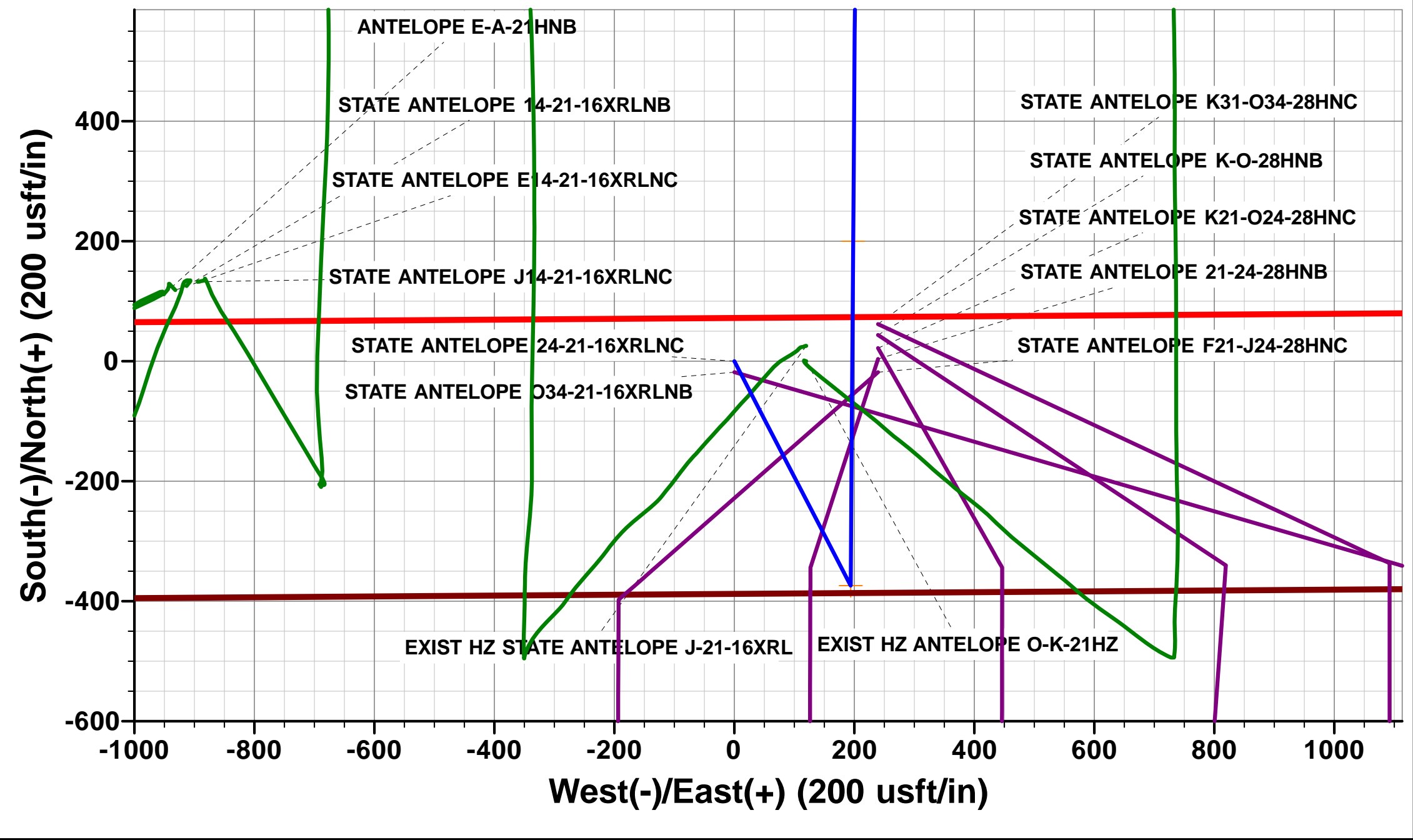
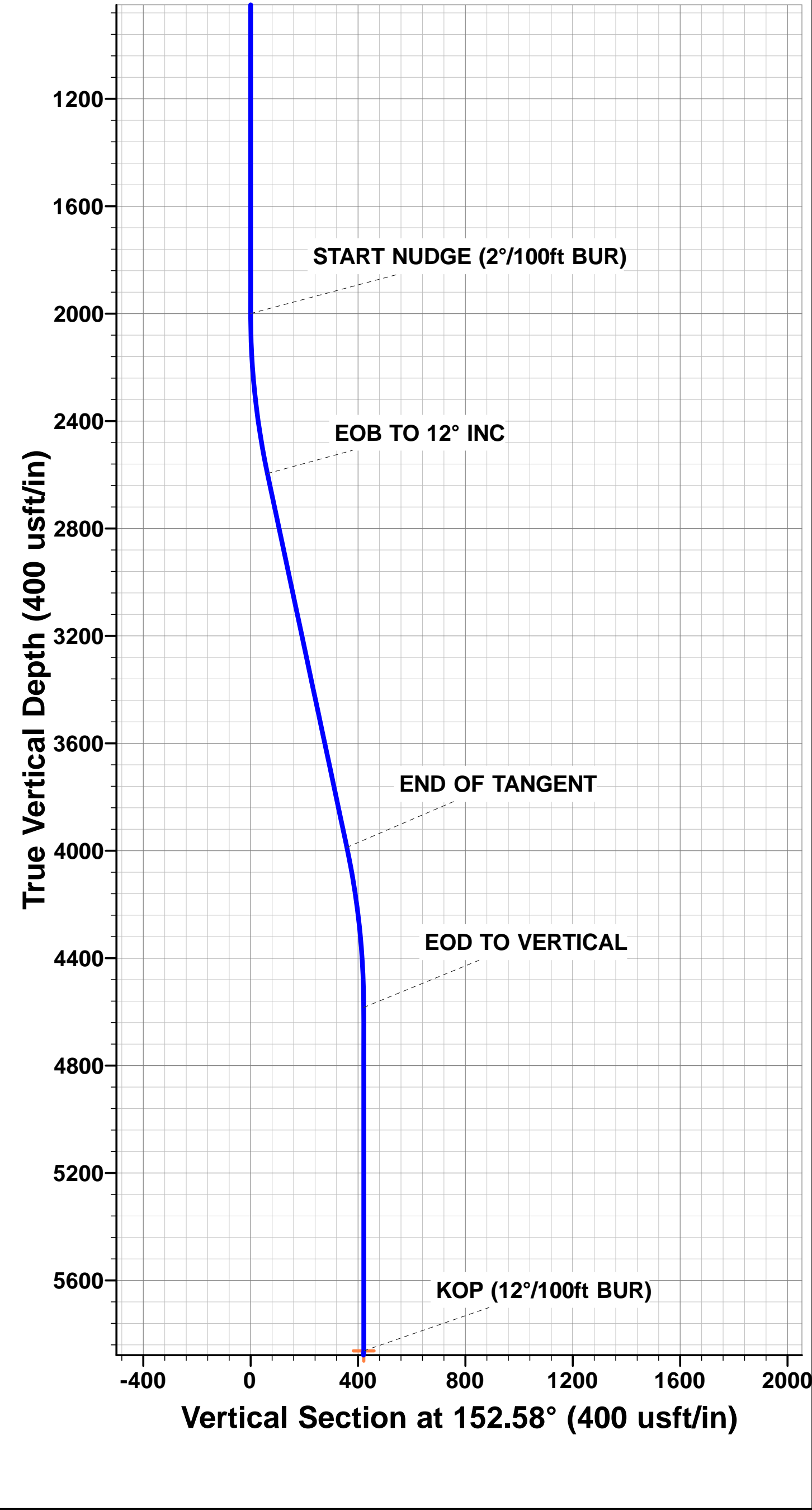
PROPOSED LOCAL COORDINATES:

SHL: 389ft FSL & 1817ft FWL Sec 21

7" ICP *NEW*: 589ft FSL & 2011ft FWL Sec 21

BHL: 470ft FNL & 2045ft FWL Sec 16

WELLBORE TARGET DETAILS (LAT/LONG)					
Name	TVD	+N/-S	+E/-W	Latitude	Longitude
KOP - STATE ANTELOPE 24-21-16XRLNC	5862.7	-373.9	194.0	40.377984	-104.330964
7" ICP - STATE ANTELOPE 24-21-16XRLNC	6366.0	200.1	198.2	40.379559	-104.330949
BHL - STATE ANTELOPE 24-21-16XRLNC	6366.0	9749.0	376.0	40.405770	-104.330310
MID-PNT - STATE ANTELOPE 24-21-16XRLNC	6366.0	5101.0	234.1	40.393012	-104.330820



Database:	EDM 5000.1 Single User Db	Local Co-ordinate Reference:	Well STATE ANTELOPE 24-21-16XRLNC
Company:	BONANZA CREEK ENERGY INC.	TVD Reference:	KB-EST @ 4651.0usft (Original Well Elev)
Project:	WELD COUNTY, COLORADO (NAD 83)	MD Reference:	KB-EST @ 4651.0usft (Original Well Elev)
Site:	SE SW SEC. 21 T5N R62W 6th P.M.	North Reference:	True
Well:	STATE ANTELOPE 24-21-16XRLNC	Survey Calculation Method:	Minimum Curvature
Wellbore:	ORIGINAL WELLBORE		
Design:	PROPOSAL #1		

Project	WELD COUNTY, COLORADO (NAD 83)		
Map System:	US State Plane 1983	System Datum:	Mean Sea Level
Geo Datum:	North American Datum 1983		
Map Zone:	Colorado Northern Zone		Using geodetic scale factor

Site	SE SW SEC. 21 T5N R62W 6th P.M.		
Site Position:		Northing:	1,383,043.02 usft
From:	Lat/Long	Easting:	3,325,725.93 usft
Position Uncertainty:	0.0 usft	Slot Radius:	1.10000ft
		Latitude:	40.378960
		Longitude:	-104.330800
		Grid Convergence:	0.76 °

Well	STATE ANTELOPE 24-21-16XRLNC		
Well Position	+N/-S	18.2 usft	Northing:
	+E/-W	-239.6 usft	Easting:
Position Uncertainty	0.0 usft		Wellhead Elevation:
			Latitude:
			Longitude:
			Ground Level:

Wellbore	ORIGINAL WELLBORE				
Magnetics	Model Name	Sample Date	Declination (°)	Dip Angle (°)	Field Strength (nT)
	IGRF2015	13/10/2015	8.15	66.95	52,620

Design	PROPOSAL #1			
Audit Notes:				
Version:	Phase:	PROTOTYPE	Tie On Depth:	0.0
Vertical Section:	Depth From (TVD) (usft)	+N/-S (usft)	+E/-W (usft)	Direction (°)
	0.0	0.0	0.0	2.21

Plan Sections											
MD (usft)	Inc (°)	Azi (°)	Vertical Depth	SS (usft)	+N/-S (usft)	+E/-W (usft)	Dogleg Rate (°/100usft)	Build Rate (°/100usft)	Turn Rate (°/100usft)	TFO (°)	Target
0.0	0.00	0.00	0.0	-4,651.0	0.0	0.0	0.00	0.00	0.00	0.00	
2,000.0	0.00	0.00	2,000.0	-2,651.0	0.0	0.0	0.00	0.00	0.00	0.00	
2,600.1	12.00	152.58	2,595.7	-2,055.3	-55.6	28.8	2.00	2.00	0.00	152.58	
4,023.5	12.00	152.58	3,988.0	-663.0	-318.3	165.2	0.00	0.00	0.00	0.00	
4,623.6	0.00	0.00	4,583.7	-67.3	-373.9	194.0	2.00	-2.00	0.00	180.00	
5,902.6	0.00	0.00	5,862.7	1,211.7	-373.9	194.0	0.00	0.00	0.00	0.00	KOP - STATE ANTI
6,527.6	75.00	0.42	6,323.9	1,672.9	-20.0	196.6	12.00	12.00	0.00	0.42	
6,627.6	75.00	0.42	6,349.8	1,698.8	76.6	197.3	0.00	0.00	0.00	0.00	
6,752.6	90.00	0.42	6,366.0	1,715.0	200.1	198.2	12.00	12.00	0.00	0.00	
11,653.6	90.00	0.42	6,366.0	1,715.0	5,101.0	234.1	0.00	0.00	0.00	0.00	MID-PNT - STATE
11,720.5	90.00	1.76	6,366.0	1,715.0	5,167.9	235.4	2.00	0.00	2.00	90.00	
16,303.7	90.00	1.76	6,366.0	1,715.0	9,749.0	376.0	0.00	0.00	0.00	0.00	BHL - STATE ANTE

Database:	EDM 5000.1 Single User Db	Local Co-ordinate Reference:	Well STATE ANTELOPE 24-21-16XRLNC
Company:	BONANZA CREEK ENERGY INC.	TVD Reference:	KB-EST @ 4651.0usft (Original Well Elev)
Project:	WELD COUNTY, COLORADO (NAD 83)	MD Reference:	KB-EST @ 4651.0usft (Original Well Elev)
Site:	SE SW SEC. 21 T5N R62W 6th P.M.	North Reference:	True
Well:	STATE ANTELOPE 24-21-16XRLNC	Survey Calculation Method:	Minimum Curvature
Wellbore:	ORIGINAL WELLBORE		
Design:	PROPOSAL #1		

Planned Survey

MD (usft)	Inc (°)	Azi (°)	TVD (usft)	SS (usft)	+N/-S (usft)	+E/-W (usft)	Vertical Section (usft)	Dogleg Rate (°/100usft)	Build Rate (°/100usft)	Turn Rate (°/100usft)
0.0	0.00	0.00	0.0	4,651.00	0.0	0.0	0.0	0.00	0.00	0.00
100.0	0.00	0.00	100.0	4,551.00	0.0	0.0	0.0	0.00	0.00	0.00
200.0	0.00	0.00	200.0	4,451.00	0.0	0.0	0.0	0.00	0.00	0.00
300.0	0.00	0.00	300.0	4,351.00	0.0	0.0	0.0	0.00	0.00	0.00
400.0	0.00	0.00	400.0	4,251.00	0.0	0.0	0.0	0.00	0.00	0.00
500.0	0.00	0.00	500.0	4,151.00	0.0	0.0	0.0	0.00	0.00	0.00
600.0	0.00	0.00	600.0	4,051.00	0.0	0.0	0.0	0.00	0.00	0.00
700.0	0.00	0.00	700.0	3,951.00	0.0	0.0	0.0	0.00	0.00	0.00
800.0	0.00	0.00	800.0	3,851.00	0.0	0.0	0.0	0.00	0.00	0.00
900.0	0.00	0.00	900.0	3,751.00	0.0	0.0	0.0	0.00	0.00	0.00
1,000.0	0.00	0.00	1,000.0	3,651.00	0.0	0.0	0.0	0.00	0.00	0.00
1,100.0	0.00	0.00	1,100.0	3,551.00	0.0	0.0	0.0	0.00	0.00	0.00
1,200.0	0.00	0.00	1,200.0	3,451.00	0.0	0.0	0.0	0.00	0.00	0.00
1,300.0	0.00	0.00	1,300.0	3,351.00	0.0	0.0	0.0	0.00	0.00	0.00
1,400.0	0.00	0.00	1,400.0	3,251.00	0.0	0.0	0.0	0.00	0.00	0.00
1,500.0	0.00	0.00	1,500.0	3,151.00	0.0	0.0	0.0	0.00	0.00	0.00
1,600.0	0.00	0.00	1,600.0	3,051.00	0.0	0.0	0.0	0.00	0.00	0.00
1,700.0	0.00	0.00	1,700.0	2,951.00	0.0	0.0	0.0	0.00	0.00	0.00
1,800.0	0.00	0.00	1,800.0	2,851.00	0.0	0.0	0.0	0.00	0.00	0.00
1,900.0	0.00	0.00	1,900.0	2,751.00	0.0	0.0	0.0	0.00	0.00	0.00
START NUDGE (2°/100ft BUR)										
2,000.0	0.00	0.00	2,000.0	2,651.00	0.0	0.0	0.0	0.00	0.00	0.00
2,100.0	2.00	152.58	2,100.0	2,551.02	-1.5	0.8	-1.5	2.00	2.00	0.00
2,200.0	4.00	152.58	2,199.8	2,451.16	-6.2	3.2	-6.1	2.00	2.00	0.00
2,300.0	6.00	152.58	2,299.5	2,351.55	-13.9	7.2	-13.6	2.00	2.00	0.00
2,400.0	8.00	152.58	2,398.7	2,252.30	-24.7	12.8	-24.2	2.00	2.00	0.00
2,500.0	10.00	152.58	2,497.5	2,153.53	-38.6	20.0	-37.8	2.00	2.00	0.00
2,600.0	12.00	152.58	2,595.6	2,055.38	-55.6	28.8	-54.4	2.00	2.00	0.00
EOB TO 12° INC										
2,600.1	12.00	152.58	2,595.7	2,055.28	-55.6	28.8	-54.4	2.00	2.00	0.00
2,700.0	12.00	152.58	2,693.4	1,957.56	-74.0	38.4	-72.5	0.00	0.00	0.00
2,800.0	12.00	152.58	2,791.3	1,859.75	-92.5	48.0	-90.6	0.00	0.00	0.00
2,900.0	12.00	152.58	2,889.1	1,761.93	-110.9	57.6	-108.6	0.00	0.00	0.00
3,000.0	12.00	152.58	2,986.9	1,664.12	-129.4	67.1	-126.7	0.00	0.00	0.00
3,100.0	12.00	152.58	3,084.7	1,566.31	-147.9	76.7	-144.8	0.00	0.00	0.00
3,200.0	12.00	152.58	3,182.5	1,468.49	-166.3	86.3	-162.9	0.00	0.00	0.00
3,300.0	12.00	152.58	3,280.3	1,370.68	-184.8	95.9	-180.9	0.00	0.00	0.00
3,400.0	12.00	152.58	3,378.1	1,272.86	-203.2	105.4	-199.0	0.00	0.00	0.00
3,500.0	12.00	152.58	3,475.9	1,175.05	-221.7	115.0	-217.1	0.00	0.00	0.00
3,600.0	12.00	152.58	3,573.8	1,077.24	-240.1	124.6	-235.2	0.00	0.00	0.00
3,700.0	12.00	152.58	3,671.6	979.42	-258.6	134.2	-253.2	0.00	0.00	0.00
3,800.0	12.00	152.58	3,769.4	881.61	-277.1	143.8	-271.3	0.00	0.00	0.00
3,900.0	12.00	152.58	3,867.2	783.79	-295.5	153.3	-289.4	0.00	0.00	0.00
4,000.0	12.00	152.58	3,965.0	685.98	-314.0	162.9	-307.5	0.00	0.00	0.00
END OF TANGENT										
4,023.5	12.00	152.58	3,988.0	663.02	-318.3	165.2	-311.7	0.00	0.00	0.00
4,100.0	10.47	152.58	4,063.0	587.96	-331.5	172.0	-324.7	2.00	-2.00	0.00
4,200.0	8.47	152.58	4,161.7	489.33	-346.2	179.6	-339.0	2.00	-2.00	0.00
4,300.0	6.47	152.58	4,260.8	390.19	-357.7	185.6	-350.3	2.00	-2.00	0.00
4,400.0	4.47	152.58	4,360.4	290.65	-366.2	190.0	-358.6	2.00	-2.00	0.00
4,500.0	2.47	152.58	4,460.2	190.83	-371.5	192.8	-363.8	2.00	-2.00	0.00
4,600.0	0.47	152.58	4,560.1	90.87	-373.8	194.0	-366.1	2.00	-2.00	0.00
EOD TO VERTICAL										
4,623.6	0.00	0.00	4,583.7	67.30	-373.9	194.0	-366.1	2.00	-2.00	0.00

Database:	EDM 5000.1 Single User Db	Local Co-ordinate Reference:	Well STATE ANTELOPE 24-21-16XRLNC
Company:	BONANZA CREEK ENERGY INC.	TVD Reference:	KB-EST @ 4651.0usft (Original Well Elev)
Project:	WELD COUNTY, COLORADO (NAD 83)	MD Reference:	KB-EST @ 4651.0usft (Original Well Elev)
Site:	SE SW SEC. 21 T5N R62W 6th P.M.	North Reference:	True
Well:	STATE ANTELOPE 24-21-16XRLNC	Survey Calculation Method:	Minimum Curvature
Wellbore:	ORIGINAL WELLBORE		
Design:	PROPOSAL #1		

Planned Survey

MD (usft)	Inc (°)	Azi (°)	TVD (usft)	SS (usft)	+N/-S (usft)	+E/-W (usft)	Vertical Section (usft)	Dogleg Rate (°/100usft)	Build Rate (°/100usft)	Turn Rate (°/100usft)
4,700.0	0.00	0.00	4,660.1	-9.13	-373.9	194.0	-366.1	0.00	0.00	0.00
4,800.0	0.00	0.00	4,760.1	-109.13	-373.9	194.0	-366.1	0.00	0.00	0.00
4,900.0	0.00	0.00	4,860.1	-209.13	-373.9	194.0	-366.1	0.00	0.00	0.00
5,000.0	0.00	0.00	4,960.1	-309.13	-373.9	194.0	-366.1	0.00	0.00	0.00
5,100.0	0.00	0.00	5,060.1	-409.13	-373.9	194.0	-366.1	0.00	0.00	0.00
5,200.0	0.00	0.00	5,160.1	-509.13	-373.9	194.0	-366.1	0.00	0.00	0.00
5,300.0	0.00	0.00	5,260.1	-609.13	-373.9	194.0	-366.1	0.00	0.00	0.00
5,400.0	0.00	0.00	5,360.1	-709.13	-373.9	194.0	-366.1	0.00	0.00	0.00
5,500.0	0.00	0.00	5,460.1	-809.13	-373.9	194.0	-366.1	0.00	0.00	0.00
5,600.0	0.00	0.00	5,560.1	-909.13	-373.9	194.0	-366.1	0.00	0.00	0.00
5,700.0	0.00	0.00	5,660.1	-1,009.13	-373.9	194.0	-366.1	0.00	0.00	0.00
5,800.0	0.00	0.00	5,760.1	-1,109.13	-373.9	194.0	-366.1	0.00	0.00	0.00
5,900.0	0.00	0.00	5,860.1	-1,209.13	-373.9	194.0	-366.1	0.00	0.00	0.00
KOP (12°/100ft BUR)										
5,902.6	0.00	0.00	5,862.7	-1,211.70	-373.9	194.0	-366.1	0.00	0.00	0.00
6,000.0	11.69	0.42	5,959.5	-1,308.45	-364.0	194.1	-356.2	12.00	12.00	0.00
6,100.0	23.69	0.42	6,054.5	-1,403.55	-333.7	194.3	-325.9	12.00	12.00	0.00
6,200.0	35.69	0.42	6,141.3	-1,490.26	-284.2	194.7	-276.5	12.00	12.00	0.00
6,300.0	47.69	0.42	6,215.8	-1,564.80	-217.8	195.1	-210.2	12.00	12.00	0.00
6,400.0	59.69	0.42	6,274.9	-1,623.90	-137.4	195.7	-129.8	12.00	12.00	0.00
6,500.0	71.69	0.42	6,316.0	-1,664.99	-46.4	196.4	-38.8	12.00	12.00	0.00
START OF TANGENT										
6,527.6	75.00	0.42	6,323.9	-1,672.90	-20.0	196.6	-12.4	12.00	12.00	0.00
6,600.0	75.00	0.42	6,342.6	-1,691.64	49.9	197.1	57.5	0.00	0.00	0.00
END OF TANGENT										
6,627.6	75.00	0.42	6,349.8	-1,698.78	76.6	197.3	84.1	0.00	0.00	0.00
6,700.0	83.69	0.42	6,363.2	-1,712.16	147.7	197.8	155.2	12.00	12.00	0.00
7" ICP - STATE ANTELOPE 24-21-16XRLNC										
6,752.6	90.00	0.42	6,366.0	-1,715.05	200.1	198.2	207.6	12.00	12.00	0.00
6,800.0	90.00	0.42	6,366.0	-1,715.05	247.6	198.6	255.0	0.00	0.00	0.00
6,900.0	90.00	0.42	6,366.0	-1,715.05	347.6	199.3	355.0	0.00	0.00	0.00
7,000.0	90.00	0.42	6,366.0	-1,715.05	447.6	200.0	454.9	0.00	0.00	0.00
7,100.0	90.00	0.42	6,366.0	-1,715.05	547.6	200.8	554.9	0.00	0.00	0.00
7,200.0	90.00	0.42	6,366.0	-1,715.05	647.6	201.5	654.8	0.00	0.00	0.00
7,300.0	90.00	0.42	6,366.0	-1,715.05	747.6	202.2	754.8	0.00	0.00	0.00
7,400.0	90.00	0.42	6,366.0	-1,715.05	847.6	203.0	854.7	0.00	0.00	0.00
7,500.0	90.00	0.42	6,366.0	-1,715.05	947.5	203.7	954.7	0.00	0.00	0.00
7,600.0	90.00	0.42	6,366.0	-1,715.05	1,047.5	204.4	1,054.6	0.00	0.00	0.00
7,700.0	90.00	0.42	6,366.0	-1,715.05	1,147.5	205.2	1,154.6	0.00	0.00	0.00
7,800.0	90.00	0.42	6,366.0	-1,715.05	1,247.5	205.9	1,254.5	0.00	0.00	0.00
7,900.0	90.00	0.42	6,366.0	-1,715.05	1,347.5	206.6	1,354.5	0.00	0.00	0.00
8,000.0	90.00	0.42	6,366.0	-1,715.05	1,447.5	207.4	1,454.5	0.00	0.00	0.00
8,100.0	90.00	0.42	6,366.0	-1,715.05	1,547.5	208.1	1,554.4	0.00	0.00	0.00
8,200.0	90.00	0.42	6,366.0	-1,715.05	1,647.5	208.8	1,654.4	0.00	0.00	0.00
8,300.0	90.00	0.42	6,366.0	-1,715.05	1,747.5	209.6	1,754.3	0.00	0.00	0.00
8,400.0	90.00	0.42	6,366.0	-1,715.05	1,847.5	210.3	1,854.3	0.00	0.00	0.00
8,500.0	90.00	0.42	6,366.0	-1,715.05	1,947.5	211.0	1,954.2	0.00	0.00	0.00
8,600.0	90.00	0.42	6,366.0	-1,715.05	2,047.5	211.8	2,054.2	0.00	0.00	0.00
8,700.0	90.00	0.42	6,366.0	-1,715.05	2,147.5	212.5	2,154.1	0.00	0.00	0.00
8,800.0	90.00	0.42	6,366.0	-1,715.05	2,247.5	213.2	2,254.1	0.00	0.00	0.00
8,900.0	90.00	0.42	6,366.0	-1,715.05	2,347.5	213.9	2,354.0	0.00	0.00	0.00
9,000.0	90.00	0.42	6,366.0	-1,715.05	2,447.5	214.7	2,454.0	0.00	0.00	0.00
9,100.0	90.00	0.42	6,366.0	-1,715.05	2,547.5	215.4	2,553.9	0.00	0.00	0.00

Database:	EDM 5000.1 Single User Db	Local Co-ordinate Reference:	Well STATE ANTELOPE 24-21-16XRLNC
Company:	BONANZA CREEK ENERGY INC.	TVD Reference:	KB-EST @ 4651.0usft (Original Well Elev)
Project:	WELD COUNTY, COLORADO (NAD 83)	MD Reference:	KB-EST @ 4651.0usft (Original Well Elev)
Site:	SE SW SEC. 21 T5N R62W 6th P.M.	North Reference:	True
Well:	STATE ANTELOPE 24-21-16XRLNC	Survey Calculation Method:	Minimum Curvature
Wellbore:	ORIGINAL WELLBORE		
Design:	PROPOSAL #1		

Planned Survey

MD (usft)	Inc (°)	Azi (°)	TVD (usft)	SS (usft)	+N/-S (usft)	+E/-W (usft)	Vertical Section (usft)	Dogleg Rate (°/100usft)	Build Rate (°/100usft)	Turn Rate (°/100usft)
9,200.0	90.00	0.42	6,366.0	-1,715.05	2,647.5	216.1	2,653.9	0.00	0.00	0.00
9,300.0	90.00	0.42	6,366.0	-1,715.05	2,747.5	216.9	2,753.8	0.00	0.00	0.00
9,400.0	90.00	0.42	6,366.0	-1,715.05	2,847.5	217.6	2,853.8	0.00	0.00	0.00
9,500.0	90.00	0.42	6,366.0	-1,715.05	2,947.5	218.3	2,953.7	0.00	0.00	0.00
9,600.0	90.00	0.42	6,366.0	-1,715.05	3,047.5	219.1	3,053.7	0.00	0.00	0.00
9,700.0	90.00	0.42	6,366.0	-1,715.05	3,147.5	219.8	3,153.6	0.00	0.00	0.00
9,800.0	90.00	0.42	6,366.0	-1,715.05	3,247.5	220.5	3,253.6	0.00	0.00	0.00
9,900.0	90.00	0.42	6,366.0	-1,715.05	3,347.5	221.3	3,353.5	0.00	0.00	0.00
10,000.0	90.00	0.42	6,366.0	-1,715.05	3,447.5	222.0	3,453.5	0.00	0.00	0.00
10,100.0	90.00	0.42	6,366.0	-1,715.05	3,547.5	222.7	3,553.4	0.00	0.00	0.00
10,200.0	90.00	0.42	6,366.0	-1,715.05	3,647.5	223.5	3,653.4	0.00	0.00	0.00
10,300.0	90.00	0.42	6,366.0	-1,715.05	3,747.5	224.2	3,753.3	0.00	0.00	0.00
10,400.0	90.00	0.42	6,366.0	-1,715.05	3,847.5	224.9	3,853.3	0.00	0.00	0.00
10,500.0	90.00	0.42	6,366.0	-1,715.05	3,947.5	225.7	3,953.2	0.00	0.00	0.00
10,600.0	90.00	0.42	6,366.0	-1,715.05	4,047.5	226.4	4,053.2	0.00	0.00	0.00
10,700.0	90.00	0.42	6,366.0	-1,715.05	4,147.5	227.1	4,153.1	0.00	0.00	0.00
10,800.0	90.00	0.42	6,366.0	-1,715.05	4,247.5	227.9	4,253.1	0.00	0.00	0.00
10,900.0	90.00	0.42	6,366.0	-1,715.05	4,347.5	228.6	4,353.0	0.00	0.00	0.00
11,000.0	90.00	0.42	6,366.0	-1,715.05	4,447.5	229.3	4,453.0	0.00	0.00	0.00
11,100.0	90.00	0.42	6,366.0	-1,715.05	4,547.5	230.1	4,552.9	0.00	0.00	0.00
11,200.0	90.00	0.42	6,366.0	-1,715.05	4,647.4	230.8	4,652.9	0.00	0.00	0.00
11,300.0	90.00	0.42	6,366.0	-1,715.05	4,747.4	231.5	4,752.8	0.00	0.00	0.00
11,400.0	90.00	0.42	6,366.0	-1,715.05	4,847.4	232.3	4,852.8	0.00	0.00	0.00
11,500.0	90.00	0.42	6,366.0	-1,715.05	4,947.4	233.0	4,952.7	0.00	0.00	0.00
11,600.0	90.00	0.42	6,366.0	-1,715.05	5,047.4	233.7	5,052.7	0.00	0.00	0.00
MID-PNT - ~1991ft FWL of Sec 16										
11,653.6	90.00	0.42	6,366.0	-1,715.00	5,101.0	234.1	5,106.2	0.00	0.00	0.00
11,700.0	90.00	1.35	6,366.0	-1,715.00	5,147.4	234.8	5,152.7	2.00	0.00	2.00
EOT TO 1.76° AZ										
11,720.5	90.00	1.76	6,366.0	-1,715.00	5,167.9	235.4	5,173.1	2.00	0.00	2.00
11,800.0	90.00	1.76	6,366.0	-1,715.00	5,247.4	237.8	5,252.7	0.00	0.00	0.00
11,900.0	90.00	1.76	6,366.0	-1,715.00	5,347.3	240.9	5,352.7	0.00	0.00	0.00
12,000.0	90.00	1.76	6,366.0	-1,715.00	5,447.3	243.9	5,452.6	0.00	0.00	0.00
12,100.0	90.00	1.76	6,366.0	-1,715.00	5,547.2	247.0	5,552.6	0.00	0.00	0.00
12,200.0	90.00	1.76	6,366.0	-1,715.00	5,647.2	250.1	5,652.6	0.00	0.00	0.00
12,300.0	90.00	1.76	6,366.0	-1,715.00	5,747.2	253.2	5,752.6	0.00	0.00	0.00
12,400.0	90.00	1.76	6,366.0	-1,715.00	5,847.1	256.2	5,852.6	0.00	0.00	0.00
12,500.0	90.00	1.76	6,366.0	-1,715.00	5,947.1	259.3	5,952.6	0.00	0.00	0.00
12,600.0	90.00	1.76	6,366.0	-1,715.00	6,047.0	262.4	6,052.6	0.00	0.00	0.00
12,700.0	90.00	1.76	6,366.0	-1,715.00	6,147.0	265.4	6,152.6	0.00	0.00	0.00
12,800.0	90.00	1.76	6,366.0	-1,715.00	6,246.9	268.5	6,252.6	0.00	0.00	0.00
12,900.0	90.00	1.76	6,366.0	-1,715.00	6,346.9	271.6	6,352.6	0.00	0.00	0.00
13,000.0	90.00	1.76	6,366.0	-1,715.00	6,446.8	274.6	6,452.6	0.00	0.00	0.00
13,100.0	90.00	1.76	6,366.0	-1,715.00	6,546.8	277.7	6,552.6	0.00	0.00	0.00
13,200.0	90.00	1.76	6,366.0	-1,715.00	6,646.7	280.8	6,652.6	0.00	0.00	0.00
13,300.0	90.00	1.76	6,366.0	-1,715.00	6,746.7	283.8	6,752.6	0.00	0.00	0.00
13,400.0	90.00	1.76	6,366.0	-1,715.00	6,846.6	286.9	6,852.6	0.00	0.00	0.00
13,500.0	90.00	1.76	6,366.0	-1,715.00	6,946.6	290.0	6,952.6	0.00	0.00	0.00
13,600.0	90.00	1.76	6,366.0	-1,715.00	7,046.5	293.0	7,052.6	0.00	0.00	0.00
13,700.0	90.00	1.76	6,366.0	-1,715.00	7,146.5	296.1	7,152.6	0.00	0.00	0.00
13,800.0	90.00	1.76	6,366.0	-1,715.00	7,246.4	299.2	7,252.6	0.00	0.00	0.00
13,900.0	90.00	1.76	6,366.0	-1,715.00	7,346.4	302.2	7,352.6	0.00	0.00	0.00
14,000.0	90.00	1.76	6,366.0	-1,715.00	7,446.4	305.3	7,452.6	0.00	0.00	0.00

Database:	EDM 5000.1 Single User Db	Local Co-ordinate Reference:	Well STATE ANTELOPE 24-21-16XRLNC
Company:	BONANZA CREEK ENERGY INC.	TVD Reference:	KB-EST @ 4651.0usft (Original Well Elev)
Project:	WELD COUNTY, COLORADO (NAD 83)	MD Reference:	KB-EST @ 4651.0usft (Original Well Elev)
Site:	SE SW SEC. 21 T5N R62W 6th P.M.	North Reference:	True
Well:	STATE ANTELOPE 24-21-16XRLNC	Survey Calculation Method:	Minimum Curvature
Wellbore:	ORIGINAL WELLBORE		
Design:	PROPOSAL #1		

Planned Survey

MD (usft)	Inc (°)	Azi (°)	TVD (usft)	SS (usft)	+N/-S (usft)	+E/-W (usft)	Vertical Section (usft)	Dogleg Rate (°/100usft)	Build Rate (°/100usft)	Turn Rate (°/100usft)
14,100.0	90.00	1.76	6,366.0	-1,715.00	7,546.3	308.4	7,552.6	0.00	0.00	0.00
14,200.0	90.00	1.76	6,366.0	-1,715.00	7,646.3	311.5	7,652.6	0.00	0.00	0.00
14,300.0	90.00	1.76	6,366.0	-1,715.00	7,746.2	314.5	7,752.6	0.00	0.00	0.00
14,400.0	90.00	1.76	6,366.0	-1,715.00	7,846.2	317.6	7,852.6	0.00	0.00	0.00
14,500.0	90.00	1.76	6,366.0	-1,715.00	7,946.1	320.7	7,952.6	0.00	0.00	0.00
14,600.0	90.00	1.76	6,366.0	-1,715.00	8,046.1	323.7	8,052.6	0.00	0.00	0.00
14,700.0	90.00	1.76	6,366.0	-1,715.00	8,146.0	326.8	8,152.6	0.00	0.00	0.00
14,800.0	90.00	1.76	6,366.0	-1,715.00	8,246.0	329.9	8,252.6	0.00	0.00	0.00
14,900.0	90.00	1.76	6,366.0	-1,715.00	8,345.9	332.9	8,352.6	0.00	0.00	0.00
15,000.0	90.00	1.76	6,366.0	-1,715.00	8,445.9	336.0	8,452.6	0.00	0.00	0.00
15,100.0	90.00	1.76	6,366.0	-1,715.00	8,545.8	339.1	8,552.6	0.00	0.00	0.00
15,200.0	90.00	1.76	6,366.0	-1,715.00	8,645.8	342.1	8,652.5	0.00	0.00	0.00
15,300.0	90.00	1.76	6,366.0	-1,715.00	8,745.7	345.2	8,752.5	0.00	0.00	0.00
15,400.0	90.00	1.76	6,366.0	-1,715.00	8,845.7	348.3	8,852.5	0.00	0.00	0.00
15,500.0	90.00	1.76	6,366.0	-1,715.00	8,945.6	351.3	8,952.5	0.00	0.00	0.00
15,600.0	90.00	1.76	6,366.0	-1,715.00	9,045.6	354.4	9,052.5	0.00	0.00	0.00
15,700.0	90.00	1.76	6,366.0	-1,715.00	9,145.6	357.5	9,152.5	0.00	0.00	0.00
15,800.0	90.00	1.76	6,366.0	-1,715.00	9,245.5	360.5	9,252.5	0.00	0.00	0.00
15,900.0	90.00	1.76	6,366.0	-1,715.00	9,345.5	363.6	9,352.5	0.00	0.00	0.00
16,000.0	90.00	1.76	6,366.0	-1,715.00	9,445.4	366.7	9,452.5	0.00	0.00	0.00
16,100.0	90.00	1.76	6,366.0	-1,715.00	9,545.4	369.7	9,552.5	0.00	0.00	0.00
16,200.0	90.00	1.76	6,366.0	-1,715.00	9,645.3	372.8	9,652.5	0.00	0.00	0.00
16,300.0	90.00	1.76	6,366.0	-1,715.00	9,745.3	375.9	9,752.5	0.00	0.00	0.00
BHL - STATE ANTELOPE 24-21-16XRLNC										
16,303.7	90.00	1.76	6,366.0	-1,715.00	9,749.0	376.0	9,756.2	0.00	0.00	0.00

Plan Annotations

MD (usft)	TVD (usft)	Local Coordinates		Comment
		+N/-S (usft)	+E/-W (usft)	
2,000.0	2,000.0	0.0	0.0	START NUDGE (2°/100ft BUR)
2,600.1	2,595.7	-55.6	28.8	EOB TO 12° INC
4,023.5	3,988.0	-318.3	165.2	END OF TANGENT
4,623.6	4,583.7	-373.9	194.0	EOD TO VERTICAL
5,902.6	5,862.7	-373.9	194.0	KOP (12°/100ft BUR)
6,527.6	6,323.9	-20.0	196.6	START OF TANGENT
6,627.6	6,349.8	76.6	197.3	END OF TANGENT
6,752.6	6,366.0	200.1	198.2	7" ICP - STATE ANTELOPE 24-21-16XRLNC
11,653.6	6,366.0	5,101.0	234.1	MID-PNT - ~1991ft FWL of Sec 16
11,720.5	6,366.0	5,167.9	235.4	EOT TO 1.76° AZ
16,303.7	6,366.0	9,749.0	376.0	BHL - STATE ANTELOPE 24-21-16XRLNC