

EE3 LLC

Multi-Well Plan,
SURPRISE UNIT #3-09H and SURPRISE UNIT #6-09H
as shown in Sections 4, 9, 16 and 17, T6N, R80W,
6th P.M., Jackson County, Colorado.

T6N, R80W, 6th P.M.

BASIS OF BEARINGS:

US STATE PLANE 1983
CO NORTH 0501 GRID

BASIS OF ELEVATION

SPOT ELEVATION AT THE NW CORNER OF SECTION 9,
T6N, R80W, 6TH PM, TAKEN FROM THE COALMONT
QUADRANGLE, USGS 7.5 MIN QUAD (TOPOGRAPHIC MAP)
WITH SAID ELEVATION MARKED AS BEING 8222 FEET.

SURFACE USE

AGRICULTURAL/GRAZING

LEGEND

FOUND CORNER 
PROPOSED WELL 
PROPOSED BHL/LPL 

GRAPHIC SCALE 1"=2000'



2000

0

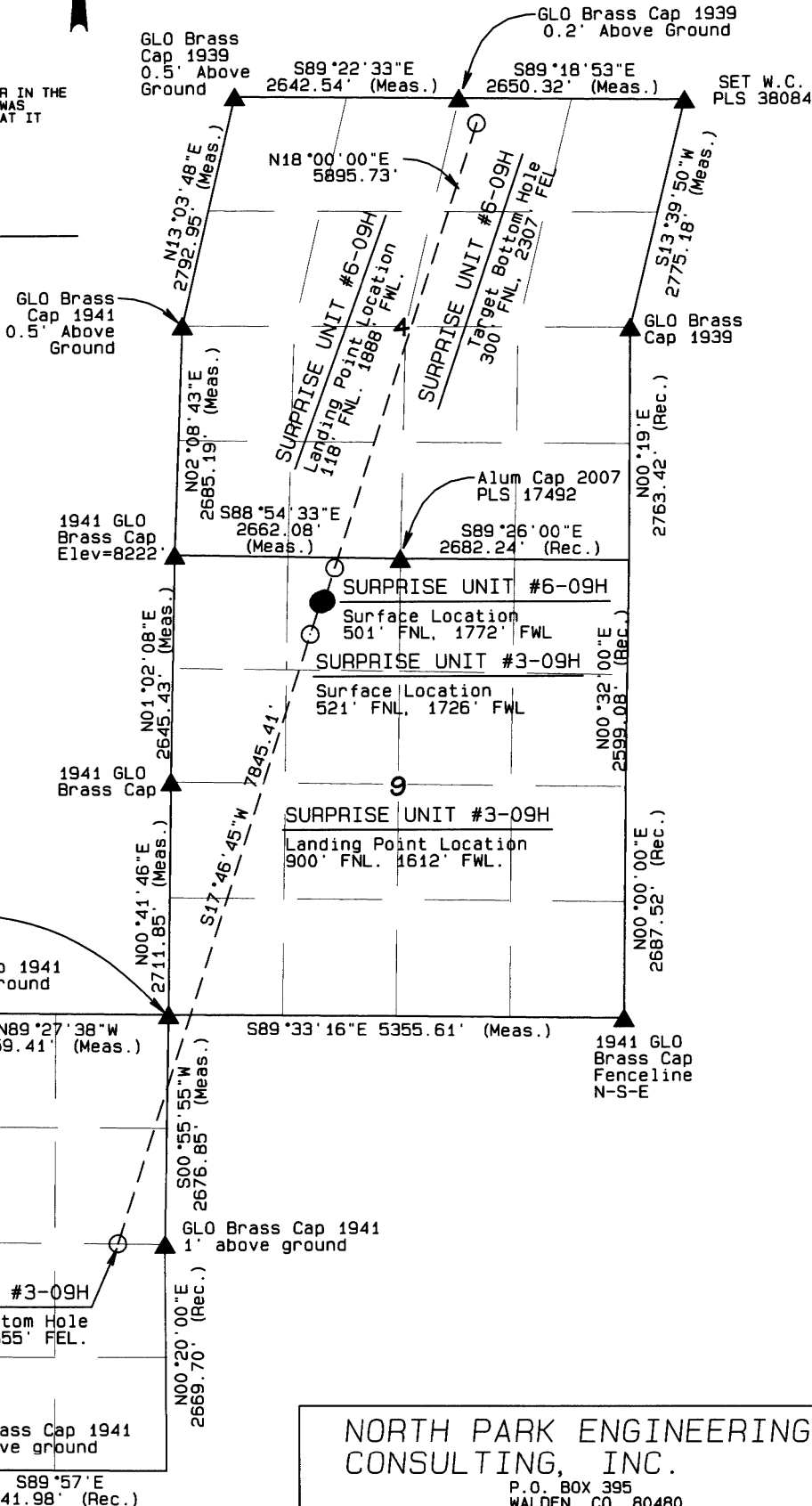
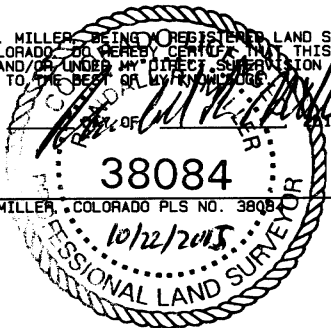
2000

I RANDALL R. MILLER, BEING A REGISTERED LAND SURVEYOR IN THE
STATE OF COLORADO, DO HEREBY CERTIFY THAT THIS PLAT WAS
MADE BY ME AND/OR UNDER MY DIRECT SUPERVISION AND THAT IT
IS ACCURATE TO THE BEST OF MY KNOWLEDGE.

DATED THIS

38084

RANDALL R. MILLER, COLORADO PLS NO. 38084



NORTH PARK ENGINEERING &
CONSULTING, INC.

P.O. BOX 395
WALDEN, CO 80480
(970) 723-3725

DATE OF FIELD WORK: MAY 21, 2015 DRAWING COMPLETION: JUNE 17, 2015
SURVEYED BY: RAS DRAWN BY: TKH CHECKED BY: RAS