

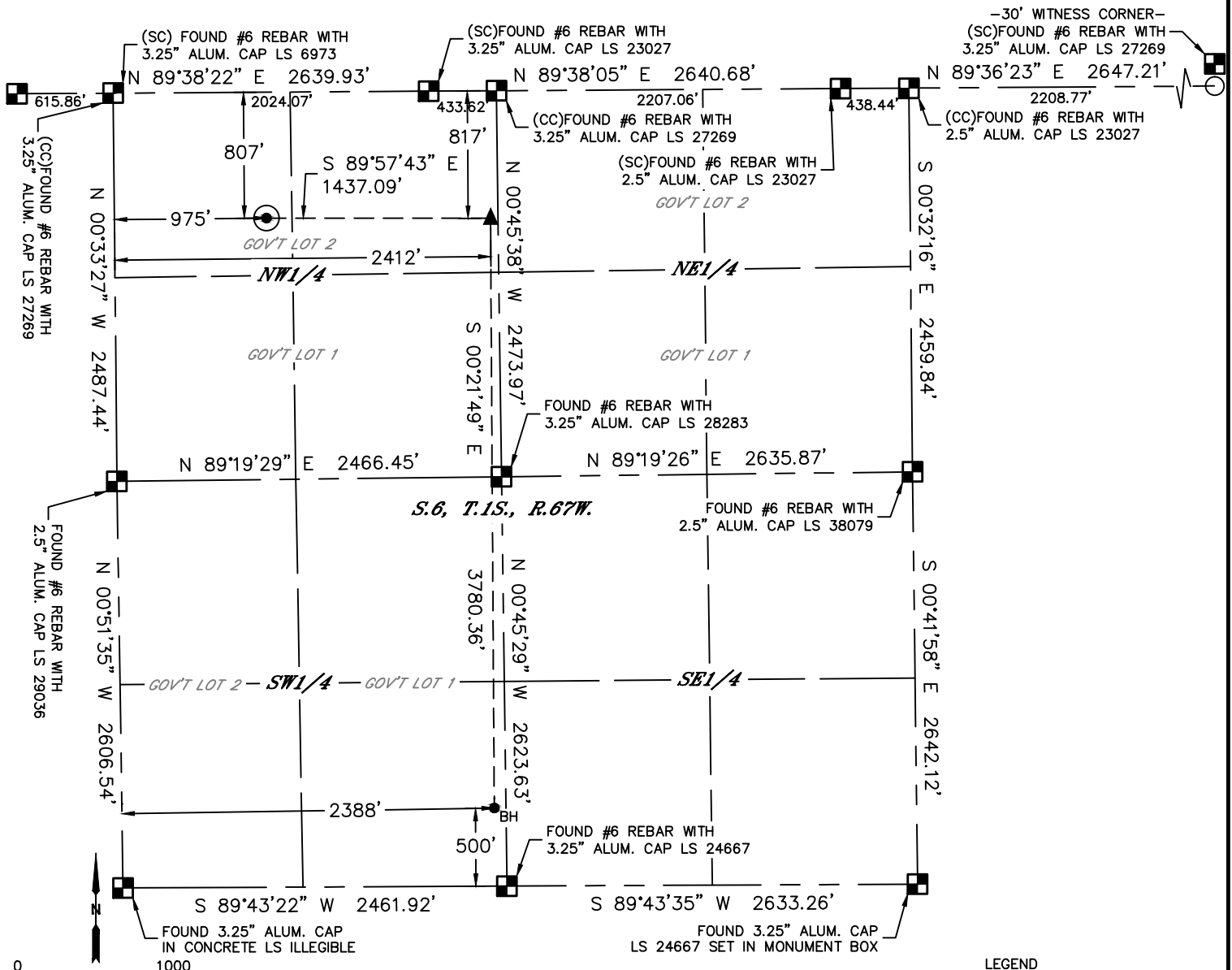


Lat40°, Inc. 6250 W. 10th Street, Unit 2, Greeley, CO 970-515-5294

WELL LOCATION CERTIFICATE

CORCILIOUS 6M-343

SECTION: 6
TOWNSHIP: 1S
RANGE: 67W
6TH. P.M.
ADAMS COUNTY, CO



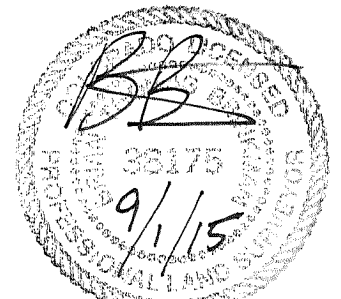
CLIENT: PDC ENERGY, LLC						LANDMAN: BARNEY HAMMOND			
INSTRUMENT OPERATOR: BRIAN ROTTINGHAUS						SURVEY DATE: 12/29/2014		SURFACE USE: PASTURE	
SHL FOOTAGE				SHL LAT°	SHL LONG °	SHL PDOP	SHL ELEV (FT.)	SHL 1/4/1/4	SHL S-T-R
807	FNL	975	FWL	39.99813	-104.93685	1.5	5058	NWNW	6-1-67

BHL FOOTAGE				BHL LAT°	BHL LONG°	BHL S-T-R	EP LAT°	EP LONG°	EP S-T-R
500	FSL	2388	FWL	39.98772	-104.93172	6-1-67	39.99810	-104.93172	6-1-67

NEAREST CULTURAL ITEMS	
BUILDING	±380' NW
BUILDING UNIT	±568' NE
HIGH OCCUPANCY BUILDING UNIT	5280'±
DESIGNATED OUTSIDE ACTIVITY AREA	5280'±
PUBLIC ROAD (CR 2)	±793' N
ABOVE GROUND UTILITY	±490' NW
RAILROAD	±1340' SW
PROPERTY LINE	±20' W

NOTE:
1) Bearings shown are Grid Bearings of the Colorado State Plane Coordinate System, North Zone, North American Datum 1983. The lineal dimensions as contained herein are based upon the "U.S. Survey Foot."
2) Distances to section lines measured at 90 degrees from said section lines.
3) Ground elevations are based on an observed GPS elevation (NAVD 1988 DATUM).
4) Latitude and Longitude shown are (NAD 83 DATUM).
5) IMPROVEMENTS: See LOCATION DRAWING for all visible improvements within 500' of oil and gas location.
6) This map does not represent a boundary survey.

- LEGEND
- = ALIQUOT MONUMENT AS DESCRIBED
 - = CALCULATED POSITION
 - = SURFACE HOLE LOCATION (SHL)
 - ▲ = ENTRY POINT LOCATION (EP)
 - BH = BOTTOM HOLE LOCATION (BHL)
 - ⊙ = EXISTING WELL
 - ⊙ = ABANDONED WELL



Brian T. Brinkman—On behalf of Lat40°, Inc.
Colorado Licensed Professional Land Surveyor No. 38175
DATE: 09/01/2015
PROJECT#: 2014158

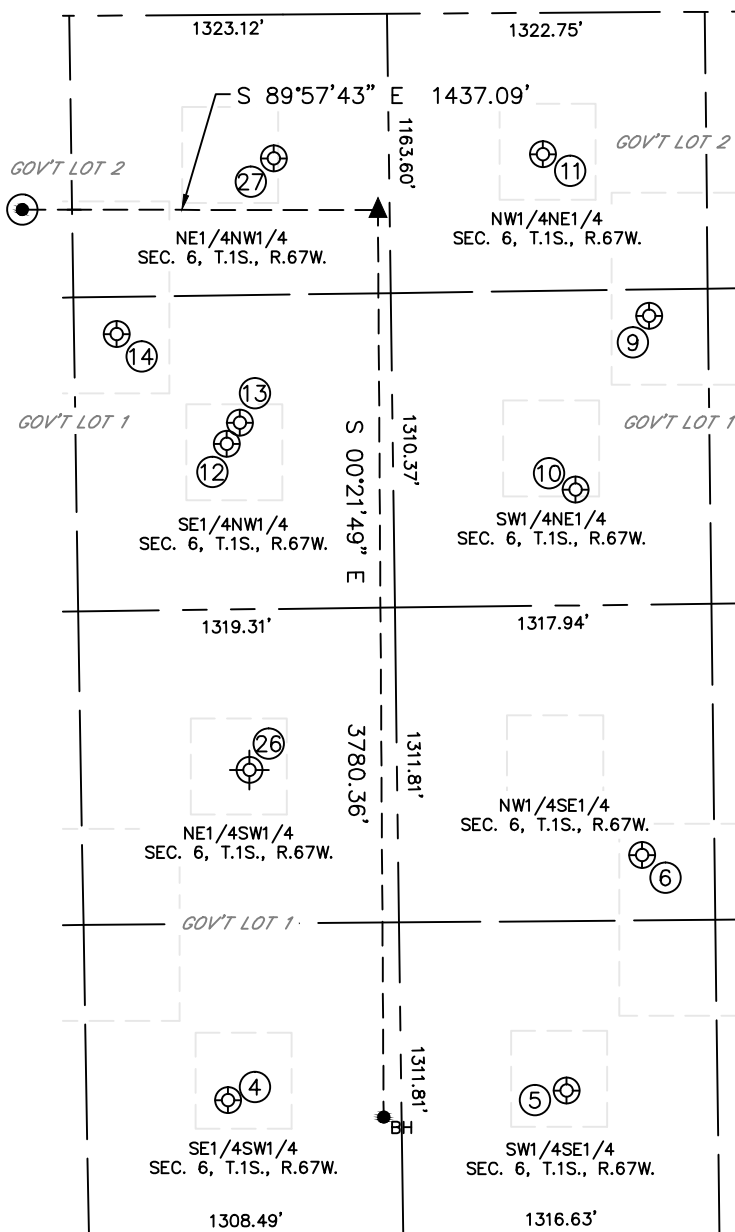


Lat40°, Inc. 6250 W. 10th Street, Unit 2, Greeley, CO 970-515-5294

SITE SKETCH

CORCILIOUS 6M-343

SECTION: 6
TOWNSHIP: 1S
RANGE: 67W
6TH. P.M.
ADAMS COUNTY, CO



WELL NO.	WELL NAME	SHL FOOTAGE				SHL LAT°	SHL LONG°	PDOP	ELEV (FT.)	1/4/1/4
4	BREDEHOFT NO. 1	574	FSL	1741	FWL	39.98793	-104.93403	2.8	5116	SESW
5	WYMAN 34-6	607	FSL	1946	FEL	39.98801	-104.92900	2.0	5122	SWSE
6	WYMAN 33-6	1587	FSL	1619	FEL	39.99070	-104.92786	2.0	5130	NWSE
9	ALBERT SACK GAS UNIT B1	1265	FNL	1566	FEL	39.99687	-104.92770	2.3	5087	SWNE
10	ALBERT SACK D 1	1988	FNL	1880	FEL	39.99488	-104.92881	2.4	5104	SWNE
11	ALBERT SACK D 3	590	FNL	2002	FEL	39.99872	-104.92926	2.5	5060	NWNE
12	SACK 23-6	1788	FNL	1773	FWL	39.99543	-104.93399	2.3	5060	SENW
13	SACK, CASPER J 1	1700	FNL	1827	FWL	39.99567	-104.93380	3.2	5059	SENW
14	SACK 22-6	1328	FNL	1319	FWL	39.99670	-104.93562	2.8	5053	SENW
26	BREDEHOFT 1	1950	FSL	1850	FWL	39.99169	-104.93361	N/A	5088	NESW
27	CORCILIOUS 1	660	FNL	1980	FWL	39.99861	-104.93325	N/A	5044	NENW

NOTE: THE EXISTING AND ABANDONED WELL DATA SHOWN IN RED ABOVE WAS OBTAINED FROM COGCC SCOUT CARDS. DATE: 09/01/2015
PROJECT#: 2014158